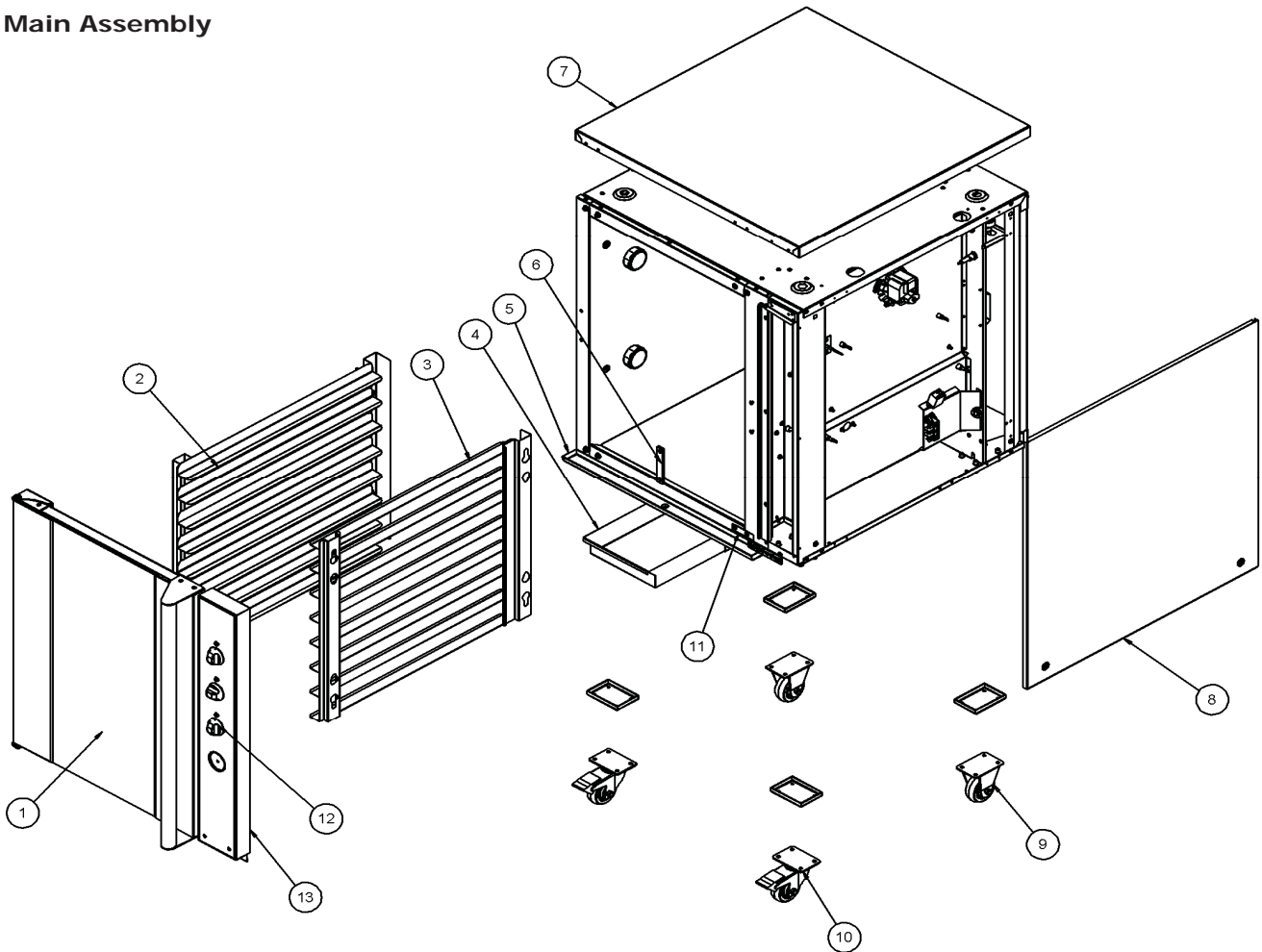


Replacement Parts List

Main Assembly



ITEM	PART No.	DESCRIPTION	*RPL
1	234565	DOOR ASSEMBLY P8	C
	236466	DOOR ASSEMBLY P10	C
	234566	DOOR ASSEMBLY P12	C
2	235022	RACK WA LH P8 (from S/N 476955)	D
	236520	RACK WA LH P10	D
	235024	RACK WA LH P12 12-TRAY (from S/N 476948)	D
	235026	RACK WA LH P12 9-TRAY (from S/N 476948)	D
	235442	RACK WA LH P8 600x400 TRAY (from S/N 476955)	D
	235443	RACK WA LH P12 600x400 TRAY (from S/N 476948)	D
	234324	RACK WA LH P8 (to S/N 476954)	D
	234661	RACK WA LH P12 9-TRAY (to S/N 476947)	D
	234328	RACK WA LH P12 12-TRAY (to S/N 476947)	D
3	235023	RACK WA RH P8 (from S/N 476955)	D
	236521	RACK WA RH P10	D
	235025	RACK WA RH P12 12-TRAY (from S/N 476948)	D
	235027	RACK WA RH P12 9-TRAY (from S/N 476948)	D
	235440	RACK WA RH P8 600x400 TRAY (from S/N 476955)	D
	235444	RACK WA RH P12 600x400 TRAY (from S/N 476948)	D
	234325	RACK WA RH P8 (to S/N 476954)	D
	234662	RACK WA RH P12 9-TRAY (to S/N 476947)	D
	234329	RACK WA RH P12 12-TRAY (to S/N 476947)	D
	235445	600x400 RACK CONVERSION KIT P8	D
	235446	600x400 RACK CONVERSION KIT P12	D

*Recommended Parts Level	
RPL	Number of Units In-Service
A	1-5
A+B	5-10
A+B+C	10-50
A+B+C+D	50+

Replacement Parts List

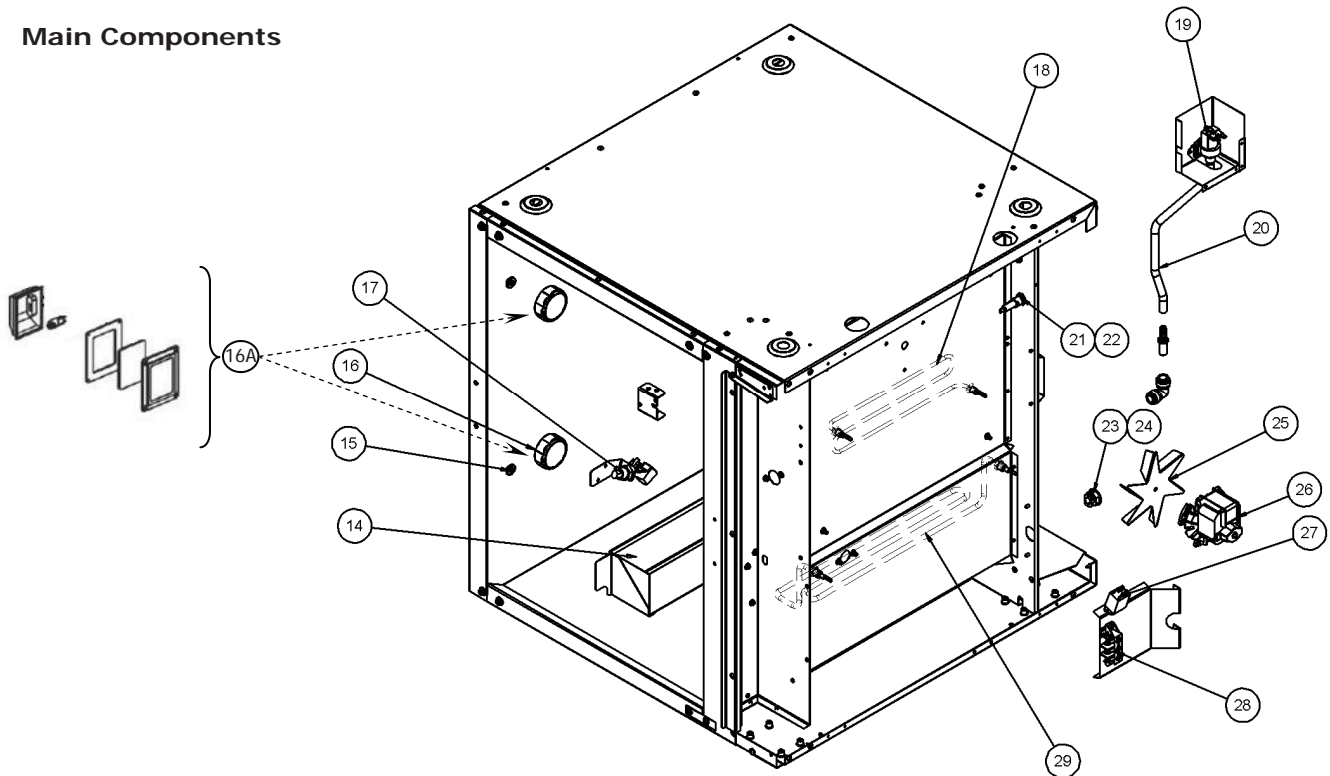
Main Assembly (continued)

ITEM	PART No.	DESCRIPTION	*RPL
4	026216	DRAWER WA	D
5	234319	CONDENSATE CHANNEL (P8 / P12)	D
	236599	CONDENSATE CHANNEL (P10)	D
6	022758	DOOR CATCH PLATE	C
7	234313	TOP COVER (P8 / P12)	D
	236463	TOP COVER (P10)	D
8	234315	SIDE PANEL (P8)	D
	236464	SIDE PANEL (P10)	D
	234316	SIDE PANEL (P12)	D
9	234216	CASTOR 75mm RIGID RUBBER	D
10	234217	CASTOR 75mm SWIVEL RUBBER D/BRAKE	D
11	234856	HINGE SPACER	D
	236299	DOOR GASKET	D
12	234447	KNOB INDEXED	C
13	234334	CONTROL PANEL ASSEMBLY (P8M) °F	D
	234717	CONTROL PANEL ASSEMBLY (P8M) °C	D
	236526	CONTROL PANEL ASSEMBLY (P10M) °F	D
	236527	CONTROL PANEL ASSEMBLY (P10M) °C	D
	234335	CONTROL PANEL ASSEMBLY (P12M) °F	D
	234718	CONTROL PANEL ASSEMBLY (P12M) °C	D

*Recommended Parts Level	
RPL	Number of Units In-Service
A	1-5
A+B	5-10
A+B+C	10-50
A+B+C+D	50+

Replacement Parts List

Main Components

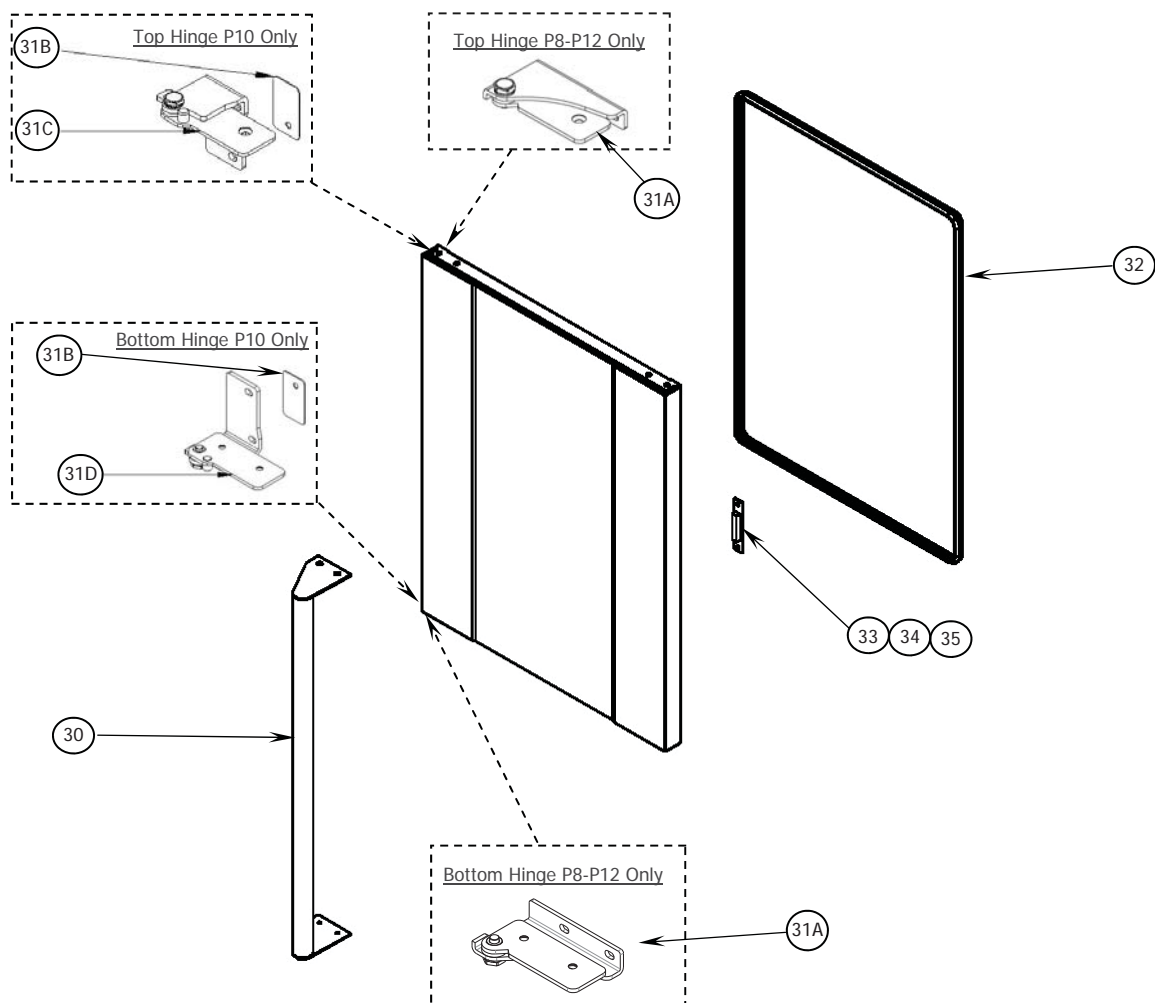


ITEM	PART No.	DESCRIPTION	*RPL
14	234318	WATER TANK WA (P8 / P12).	D
	236668	WATER TANK WA (P10).	D
15	025566	HANGER STUD.	D
16	233863	OVEN LAMP ASSY G9 58mm LENS 230V - (P8 / P12).	A
	233115	OVEN LAMP LENS - (P8 / P12).	B
	231814	LAMP BULB G9 25W HALOGEN 230V - (P8 / P12).	A
	233884	LAMP BULB G9 25W HALOGEN 120V - (P8 / P12).	A
	233883	OVEN LAMP SEAL - (P8 / P12).	B
16A	231814	LAMP BULB G9 25W HALOGEN 230V - (P10).	A
	233884	LAMP BULB G9 25W HALOGEN 120V - (P10).	A
	236214	OVEN LAMP HOLDER - (P10).	A
	021352	OVEN LAMP GLASS - (P10).	B
	021353	LAMP FRAME - (P10).	A
	021354	LAMP GASKET - (P10).	B
17	233528	FLOAT SWITCH - CAP WIRED.	B
18	234191	DRY ELEMENT 240V 800W (P8 / P10).	B
	234190	DRY ELEMENT 120V 700W (P8 / P10).	B
	234080	DRY ELEMENT 240V 1200W (P12).	B
	234081	DRY ELEMENT 120V 1200W (P12).	B
19	234348	WATER SOLENOID 90° OUTLET 240V.	B
	234349	WATER SOLENOID 90° OUTLET 120V.	B
20	234668	WATER TUBE 3/8" ID BLUE 640mm (P12).	D
	234669	WATER TUBE 3/8" ID BLUE 490mm (P8 / P10).	D
Not	025922	ADAPTOR BRASS 3/4" BSP. (USA / CANADA ONLY).	D
	021527	WASHER RUBBER. (USA / CANADA ONLY).	A
21	234803	FUSE 10A Ø6.3 X 32mm.	B
22	234802	FUSE HOLDER 16A 250V.	D
23	233870	CABLE CLAMP PA107.	D
24	233871	SCREW 3.5x15 Hi-Lo.	D
25	022042	FAN BLADE.	D
26	13431K	MOTOR 208 / 240V 50 /60HZ.	B
	25387K	MOTOR A67-3038LH-47 (120V).	B
27	021534	RELAY 240V LY1F.	C
	021535	RELAY 110V.	C
28	026160	TERMINAL BLOCK FV110B.	C
29	234078	WET ELEMENT 240V 600W.	B
	234079	WET ELEMENT 120V 650W.	B

*Recommended Parts Level	
RPL	Number of Units In-Service
A	1-5
A+B	5-10
A+B+C	10-50
A+B+C+D	50+

Replacement Parts List

Door Assembly

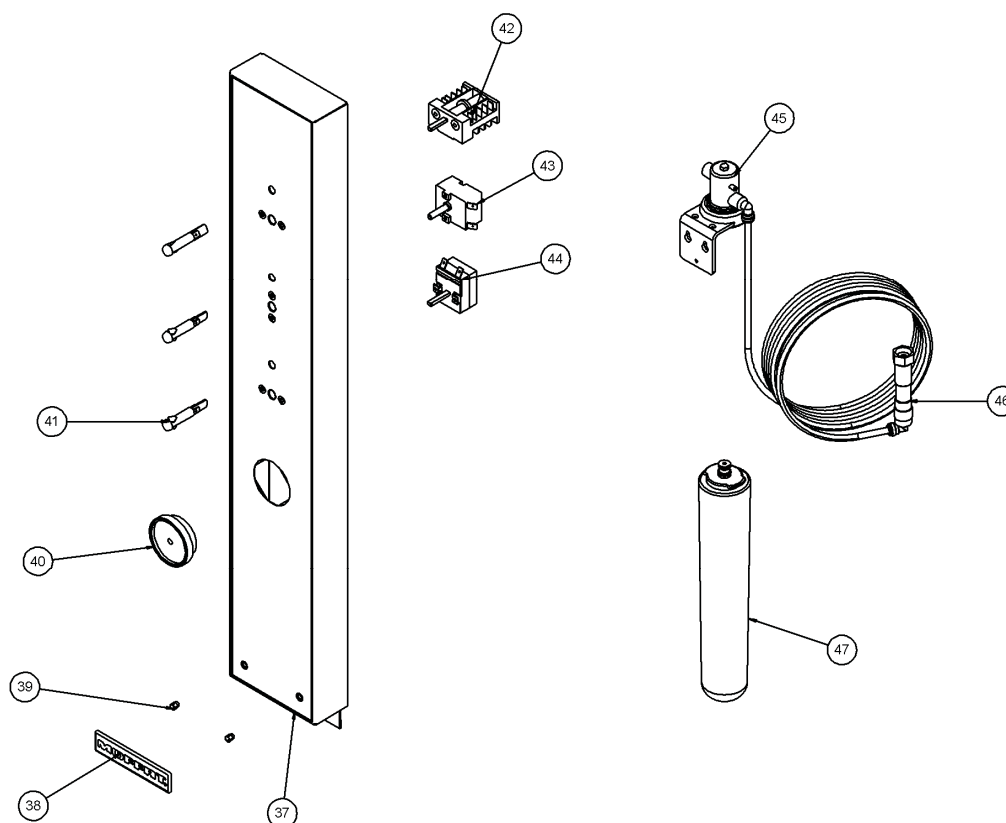


ITEM	PART No.	DESCRIPTION	*RPL
30	234571	DOOR HANDLE WA (P8 Only).	D
	236473	DOOR HANDLE WA (P10 Only).	D
	234535	DOOR HANDLE WA (P12 Only).	D
31A	234930	DOOR HINGE SET (P8 - P12 Only). (Includes Top and Bottom Hinge)	B
31B	236299	DOOR HINGE GASKET (P10 Only).	B
31C	235851	DOOR HINGE SET TOP (P10 Only).	B
31D	235852	DOOR HINGE SET BOTTOM (P10 Only).	B
32	234570	DOOR SEAL (P8).	B
	236474	DOOR SEAL (P10).	B
	234537	DOOR SEAL (P12).	B
33	018947	MAGNET CATCH	B
34	026604	CATCH CLIP	C
35	025600	MAGNET MOUNTING PLATE	C

*Recommended Parts Level	
RPL	Number of Units In-Service
A	1-5
A+B	5-10
A+B+C	10-50
A+B+C+D	50+

Replacement Parts List

Controls & Water Assembly



ITEM	PART No.	DESCRIPTION	*RPL
37	234641	CONTROL PANEL LAMINATED P8M °F	D
	234715	CONTROL PANEL LAMINATED P8M °C	D
	236586	CONTROL PANEL LAMINATED P10M °F	D
	236587	CONTROL PANEL LAMINATED P10M °C	D
	234642	CONTROL PANEL LAMINATED P12M °F	D
	234716	CONTROL PANEL LAMINATED P12M °C	D
38	233865	BADGE MOFFAT	D
	233867	BADGE BLUE SEAL	D
39	228132	TUBE CLIP	B
40	022788	THERMOMETER	D
41	234737	INDICATOR LED RED 9mm 110-250V BIPOLAR	A
42	022789	SWITCH - 3 POSITION	B
43	022787	THERMOSTAT 0-85 DEG C	A
44	024527	THERMOSTAT 30-85 C	A
45	234347	FILTER HEAD KIT (INCLUDES ITEM 47) (OPTIONAL)	C
46	234563	DOUBLE CHECK VALVE (OPTIONAL)	D
47	234562	FILTER CARTRIDGE (OPTIONAL)	B
50	002414	CORD SET 10A 250V AU, NZ (NOT SHOWN)	D
51	017453	CORD SET 13A FUSED 250V UK, XP (NOT SHOWN)	D
52	012289	CORD SET 15A 120V 5-15P US, CAN, XP (P8 , P10 ONLY, NOT SHOWN)	D
	023100	CORD SET 20A 120V 5-20P US, CAN (P12 ONLY, NOT SHOWN)	D
	018751	CORD SET 16A SHUKO (KR)	D
	012877	POWER FLEX 10A (XP)	D

*Recommended Parts Level	
RPL	Number of Units In-Service
A	1-5
A+B	5-10
A+B+C	10-50
A+B+C+D	50+