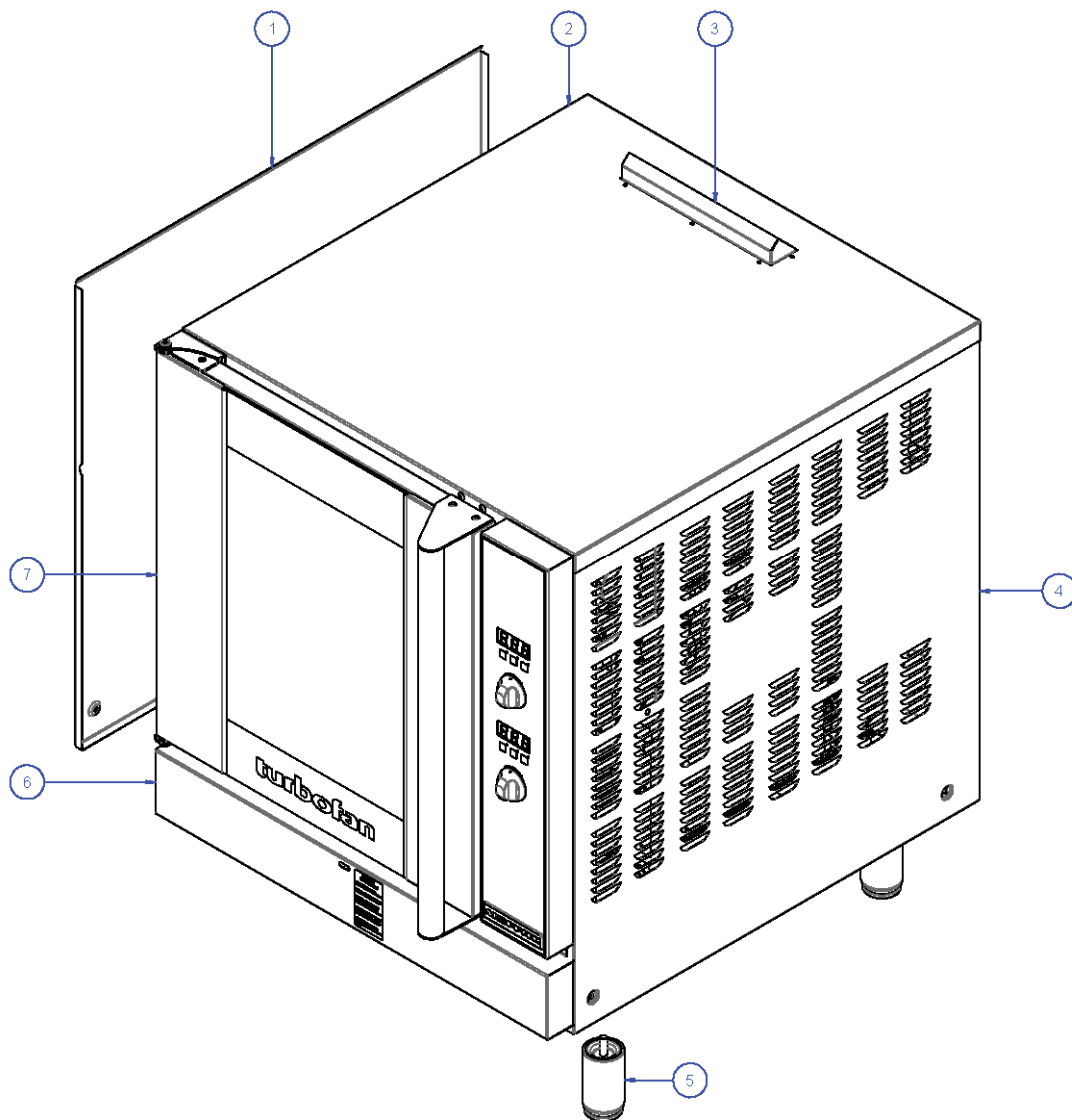


Outer Assembly

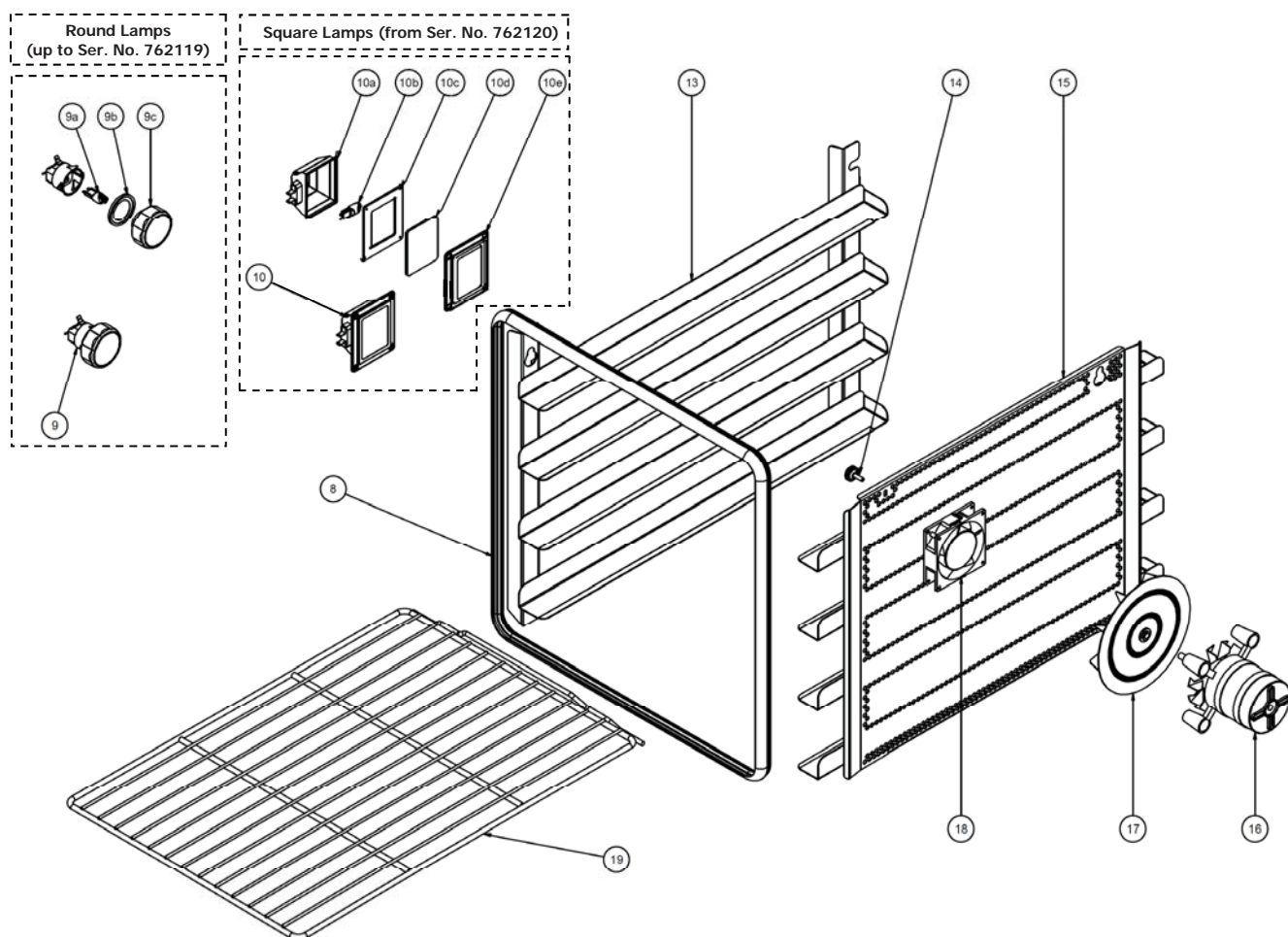


Item	Part No.	Description	*RPL
1	234223	SIDE COVER LH	D
2	232912	TOP PANEL	D
3	232961	VENT SHIELD	D
4	232210	SIDE COVER RH	D
5	233986	FOOT 4"/100mm ADJ	D
6	233533	SILL	D
7	234583	DOOR ASSEMBLY(COMPLETE)	C

*Recommended Parts Level	
RPL	Number of units in service
A	1-5
B	5-10
C	10-50
D	50+

9 Exploded Parts Lists

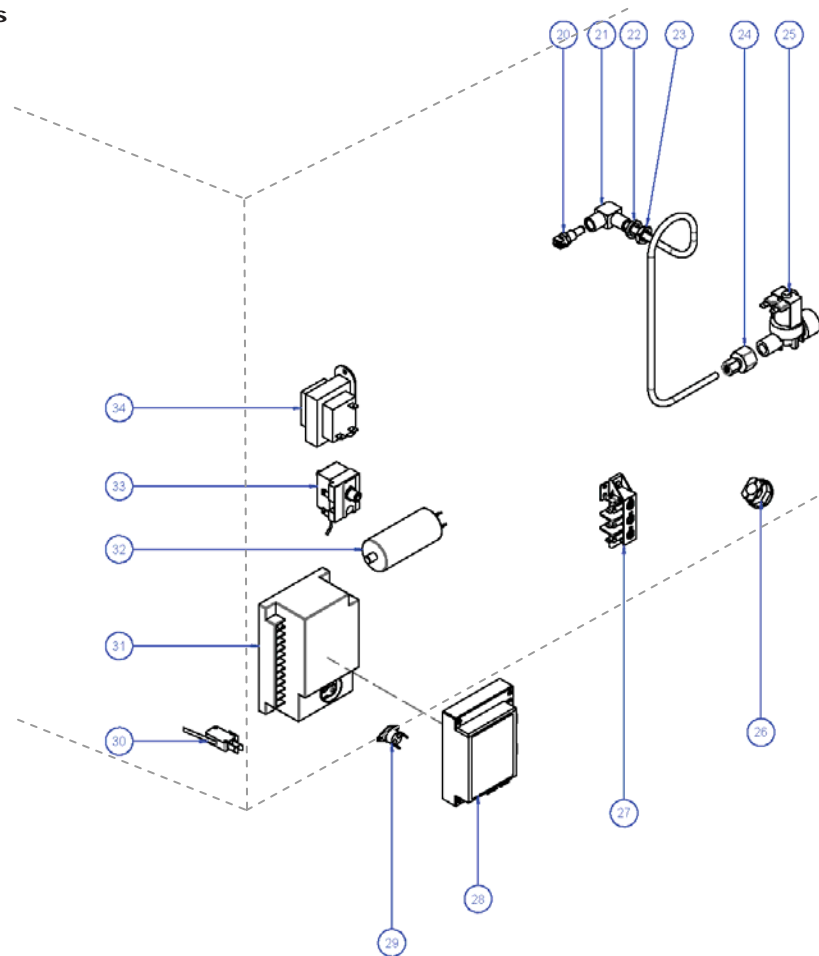
Motor, Lamp & Racks



Item	Part No.	Description	*RPL
8	232666	DOOR SEAL E27/32	B
9	233863	OVEN LAMP ASSY G9 (COMPLETE)	A
9a	231814	LAMP BULB G9 25W 230V HALOGEN 208-240V	A
	233884	LAMP BULB G9 25W 120V HALOGEN 110-120V	A
9b	233883	OVEN LAMP SEAL	B
9c	233115	OVEN LAMP LENS	B
10	—	OVEN LAMP ASSY - STEAM SEALED	
10a	236214	LAMP HOLDER (Bulb Included)	B
10b	231814	LAMP BULB G9 25W 230V HALOGEN 208-240V	A
	233884	LAMP BULB G9 25W 120V HALOGEN 110-120V	A
10c	021354	GASKET	A
10d	021352	GLASS LENS	A
10e	021353	SUPPORT FRAME	A
13	234656	SIDE RACK LH 4 TRAY	D
	234658	SIDE RACK LH 5 TRAY	D
	234660	SIDE RACK LH 3 TRAY	D
14	233552	THUMBSCREW	B
15	234666	SIDE RACK RH 4 TRAY	D
	234667	SIDE RACK RH 5 TRAY	D
	238561	SIDE RACK RH 3 TRAY	D
16	232904	FAN MOTOR 208-240V, 50/60Hz	B
	232905	FAN MOTOR 120V, 60Hz	B
	234726	E-CLIP (NOT SHOWN)	D
17	232903	FAN 7"/175mm	C
18	234460	COOLING FAN 230V 50/60Hz	B
	234461	COOLING FAN 115V 50/60HZ	B
19	233649	OVEN RACK	D
	235277	DOOR ROLLER CATCH STRIKE PIN	C
	235278	STRIKE LOCKING NUT	D

*Recommended Parts Level	
RPL	Number of units in service
A	1-5
B	5-10
C	10-50
D	50+

Electrical Components



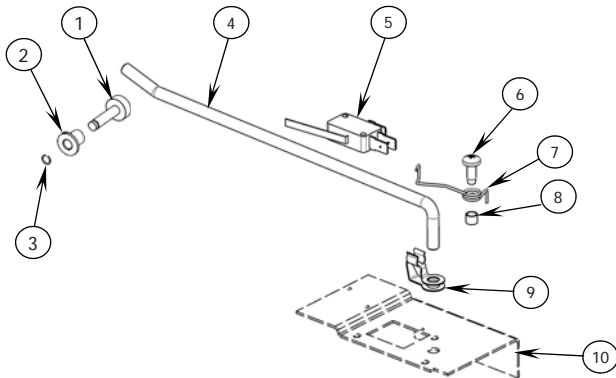
Item	Part No.	Description	*RPL
20	021057	SPRAY NOZZLE ASSEMBLY	C
21	234774	WATER TUBE	D
22	015292	SEAL WASHER	D
23	013215	NUT BRASS	D
24	020869	FEMALE CONNECTOR	D
25	020851	WATER SOLENOID 240V	B
	021617	WATER SOLENOID 110V	B
Not shown	025922	ADAPTOR BRASS 3/4" BSP. (USA / CANADA ONLY)	D
	021527	WASHER RUBBER. (USA / CANADA ONLY)	A
26	233870	CABLE CLAMP PA107	D
27	026160	TERMINAL BLOCK FV110B	D
28	230691	IGNITION BOX - BRAHMA CE11U 208-240V	A
29	232964	THERMAL SWITCH 110°C	C
30	-----	DOOR MICROSWITCH ASSY (Refer following Page)	A
31	234459	IGNITION MODULE 110-120V	A
32	024432	CAPACITOR 3uF 208-240V	B
	232552	CAPACITOR 12uF 110-120V	B
33	025400	OVERTEMP THERMOSTAT 360C	A
34	234429	TRANSFORMER 208/240V x 12VAC SEC 20VA	C
	234430	TRANSFORMER 110/120V x 12VAC SEC 15VA	C

*Recommended Parts Level	
RPL	Number of units in service
A	1-5
B	5-10
C	10-50
D	50+

9 Exploded Parts Lists

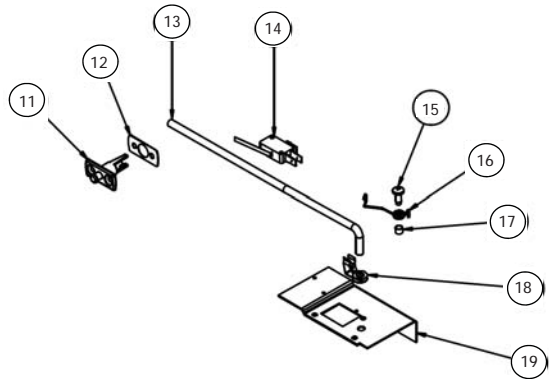
Oven Main Assembly - Microswitch Details

Up to Ser. No. 744429.



Item	Part No	Description	*RPL
1	021637	Microswitch Button	D
2	013610	Pivot Bush Plated	D
3	021638	Pin Circlip	D
4	234403	Microswitch Rod	D
5	024802	Door Microswitch	B
6	041043	Screw M5 x 12 Taptite Phil	D
7	235354	Microswitch Return Spring	C
8	003397	Spacer - Plated	D
9	017929	Damper Rod Clip	D
10	232911	Microswitch Bracket	B
	237437	Microswitch Button Kit - Upgrade	

From Ser. No. 744430.

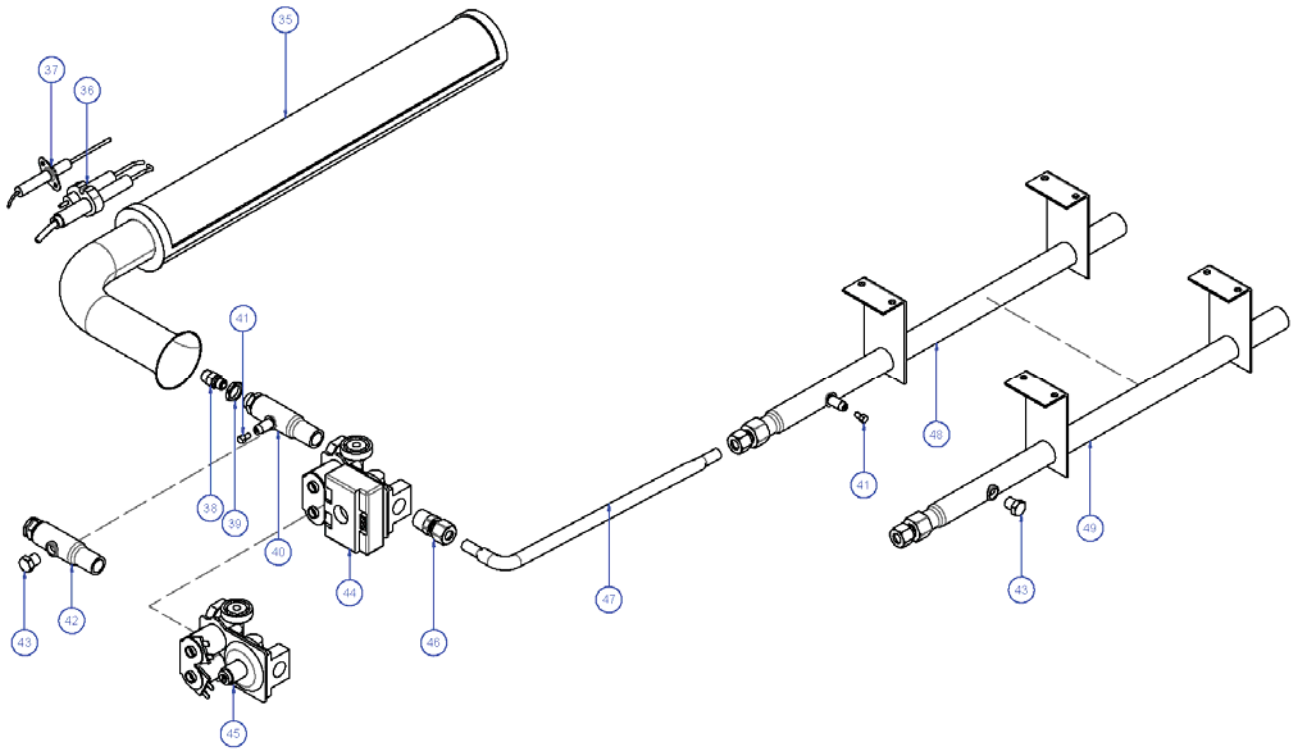


Item	Part No	Description	*RPL
11	236880	Microswitch Button Assy	D
12	236885	Microswitch Button Gasket	D
13	236886	Microswitch Rod	D
14	024802	Door Microswitch	A
15	041043	Screw M5 x 12 Taptite PHIL	D
16	235354	Microswitch Return Spring E32	C
17	003397	Spacer Plated	D
18	017929	Damper Rod Clip	D
19	232911	Microswitch Bracket	D

*Recommended Parts Level

RPL	Number of units in service
A	1-5
B	5-10
C	10-50
D	50+

Gas Components

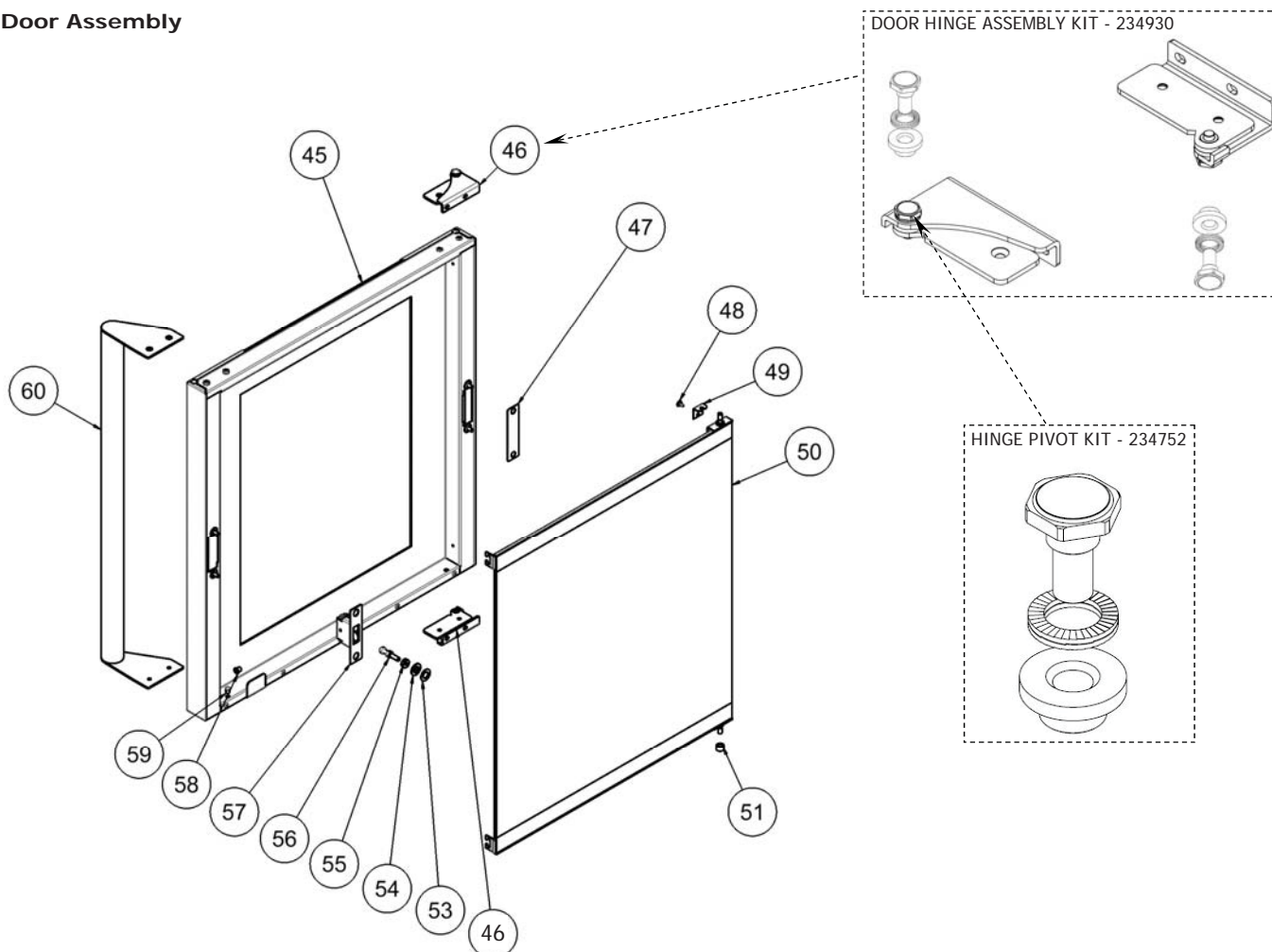


Item	Part No.	Description	*RPL
35	004952	BURNER	C
36	024127	SPARK ELECTRODE	A
37	025071	FLAME SENSOR	A
	022909	IGNITION ELECTRODE ASSEMBLY (COMPLETE)	B
38	032170	INJECTOR 1.7mm - LPG / BUT	C
	032270	INJECTOR 2.70mm - NAT UK US CA	C
	032280	INJECTOR 2.80mm - NAT AU NZ KR XP	C
39	025093	LOCKNUT M14X1	D
40	234265	G32 INJECTOR PIPE ASSY - EURO AU NZ KR UK XP	D
41	026060	PRESSURE TEST POINT PLUG AU NZ KR UK XP	D
42	234266	G32 INJECTOR PIPE ASSY - USA/CAN US CA JP ONLY	D
43	015311	PRESSURE TEST POINT PLUG US CA JP ONLY	D
44	019370	GAS VALVE G32 208-240V	B
45	234458	GAS VALVE G32 110-120V	B
	015627	LPG SPRING KIT (NOT SHOWN)	C
	016405	NAT SPRING KIT (NOT SHOWN)	C
46	021288	MALE CONNECTOR ASSY 3/8" x 3/8" BSPT	D
47	024156	FLEXTUBE DORMONT T6x12	D
48	233547	G32 SUPPLY PIPE ASSY - BSP AU NZ KR UK XP	D
49	233548	G32 SUPPLY PIPE ASSY - NPT US CA JP ONLY	D

*Recommended Parts Level	
RPL	Number of units in service
A	1-5
B	5-10
C	10-50
D	50+

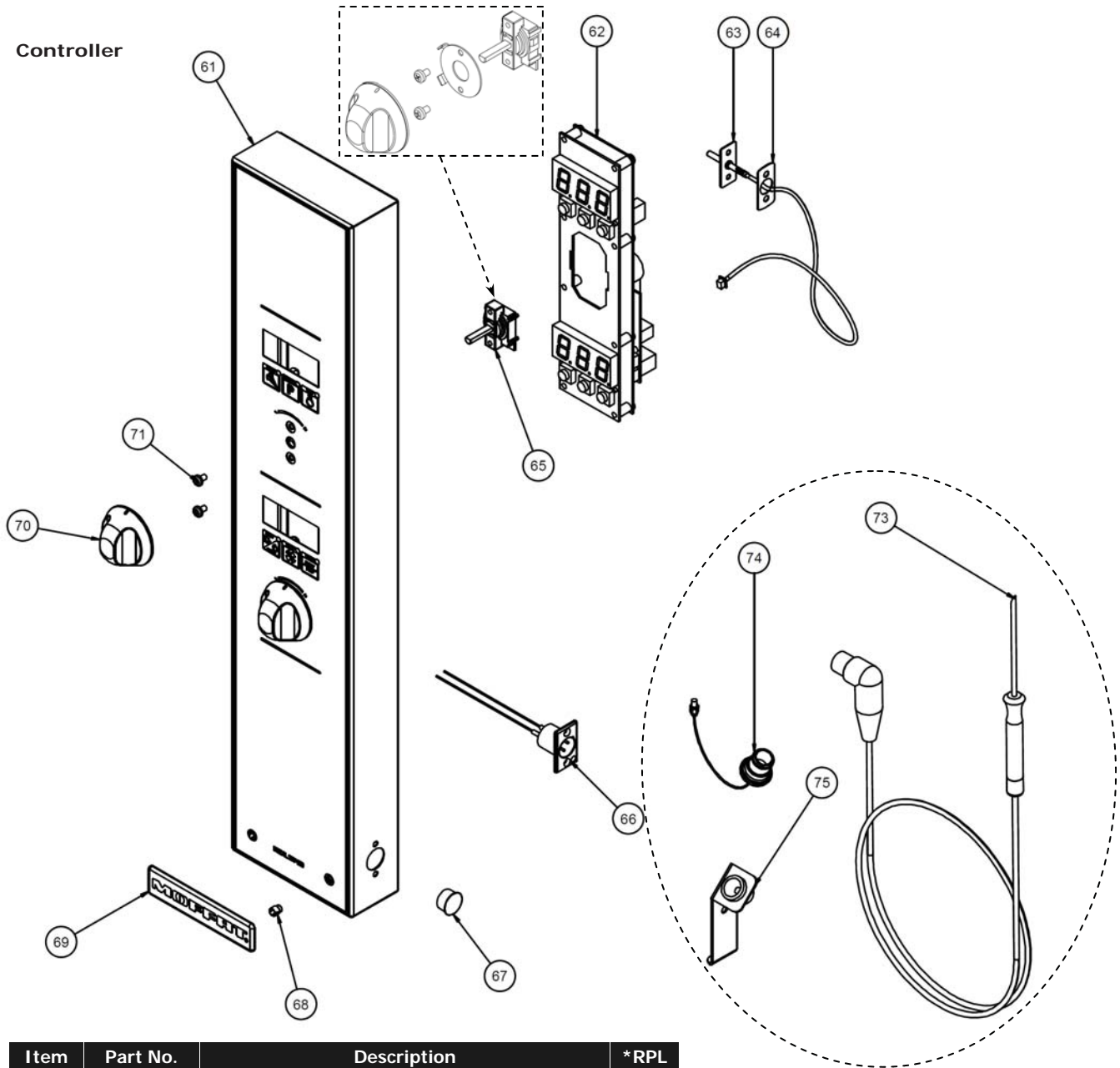
9 Exploded Parts Lists

Door Assembly



Item	Part No.	Description	*RPL
45	235275	DOOR OUTER GLASS ASSEMBLY	C
46	234930	DOOR HINGE ASSEMBLY KIT - which includes:-	B
		<i>Door Hinge Assy Bottom</i>	
		<i>Door Hinge Assy Top</i>	
---	234752	HINGE PIVOT KIT - which includes the following:-	
		<i>Door Hinge Pivot Pin</i>	
		<i>Washer M8 Nord-Lock T316</i>	
		<i>Door Hinge Pivot Bush</i>	
47	234725	DOOR CATCH BLANKING PLATE	C
48	041045	SCREW 8 x 3/8" TRUSS HD PHL NP	D
49	234779	INNER GLASS RETAINING CLIP	C
50	234757	DOOR INNER GLASS ASSY	C
51	234767	INNER GLASS PIVOT SPACER	D
53	235105	DOOR STRIKE ESCUTCHEON WASHER	C
54	235104	DOOR STRIKE PIN ESCUTCHEON	C
55	235278	STRIKE LOCKING NUT	C
56	235277	DOOR ROLLER CATCH STRIKE PIN	C
57	234580	DOOR ROLLER CATCH	C
58	234818	INNER GLASS LATCHING BUSH	D
59	234835	DOME PLUG	D
60	234581	DOOR HANDLE WA	D

*Recommended Parts Level	
RPL	Number of units in service
A	1-5
B	5-10
C	10-50
D	50+



Item	Part No.	Description	*RPL
61	237139	CONTROL PANEL LAMINATED G32D	D
62	236256	DIGITAL CONTROL KIT E31D E32D G32D E33D	B
63	237447K	TEMP PROBE PT1000 31D/32D/33D	B
64	236885	TEMP PROBE GASKET	B
65	234450K	ENCODER KIT	B
		- Encoder	
		- Knob Stop Plate	
		- Screws M4 x 6Pan HD Phil NP	
		- Knob Index	
66	235846	PANEL SOCKET CORE TEMP - D SERIES	C
67	236192	DOME PLUG 15.9	D
68	228132	BADGE CLIP	C
69	233865	BADGE MOFFAT	D
70	234447	KNOB TFAN INDEX	C
71	041425	SCREW M4 X 6 PAN HD PHIL NP	D
72	236060	CORE TEMP PROBE KIT (which includes:-)	B
73	235845	Core Temp Probe (PT1000)	B
74	235847	Dust Cap Core Temp Socket	D
75	236486	Core Temp Probe Holder	C
Not Shown	748019	SCREW M4 x 10 TAPTITE PAN POZI ZP	D
	233867	BADGE BLUE SEAL UK, CAN	D

*Recommended Parts Level	
RPL	Number of units in service
A	1-5
B	5-10
C	10-50
D	50+