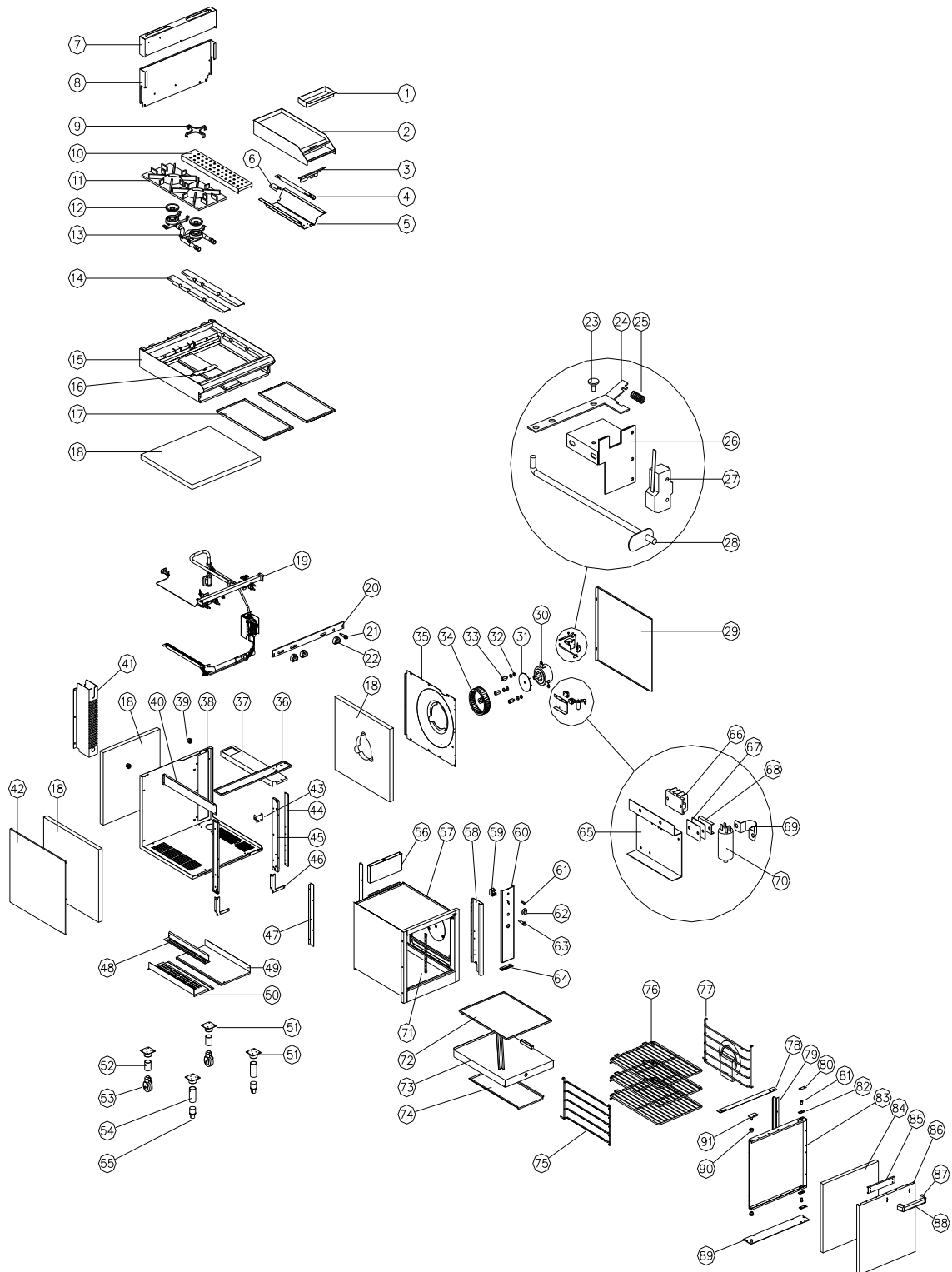

10. G54 PARTS DIAGRAMS

SECTION	PAGE NO.
10.1 G54 MAIN ASSEMBLY	45
10.1.1 Main Assembly - From S/N 224660	45
10.1.2 Main Assembly - To S/N 224659	48
10.2 G54 GAS PIPING ASSEMBLY (STANDARD)	51
10.2.1 Gas Piping Assembly (Standard) - From S/N 224660	51
10.2.2 Gas Piping Assembly (Standard) - From S/N 126846 to S/N 224659	53
10.2.3 Gas Piping Assembly (Standard) - To S/N 126846	56
10.3 G54 GAS PIPING ASSEMBLY (FFP).....	58
10.3.1 Gas Piping Assembly (FFP) - From S/N 224660	58
10.3.2 Gas Piping Assembly (FFP) - From S/N 126846 to S/N 224659	61
10.3.3 Gas Piping Assembly (FFP) - To S/N 126846	64

10.1 G54 MAIN ASSEMBLY

10.1.1 G54 Main Assembly - From S/N 224660



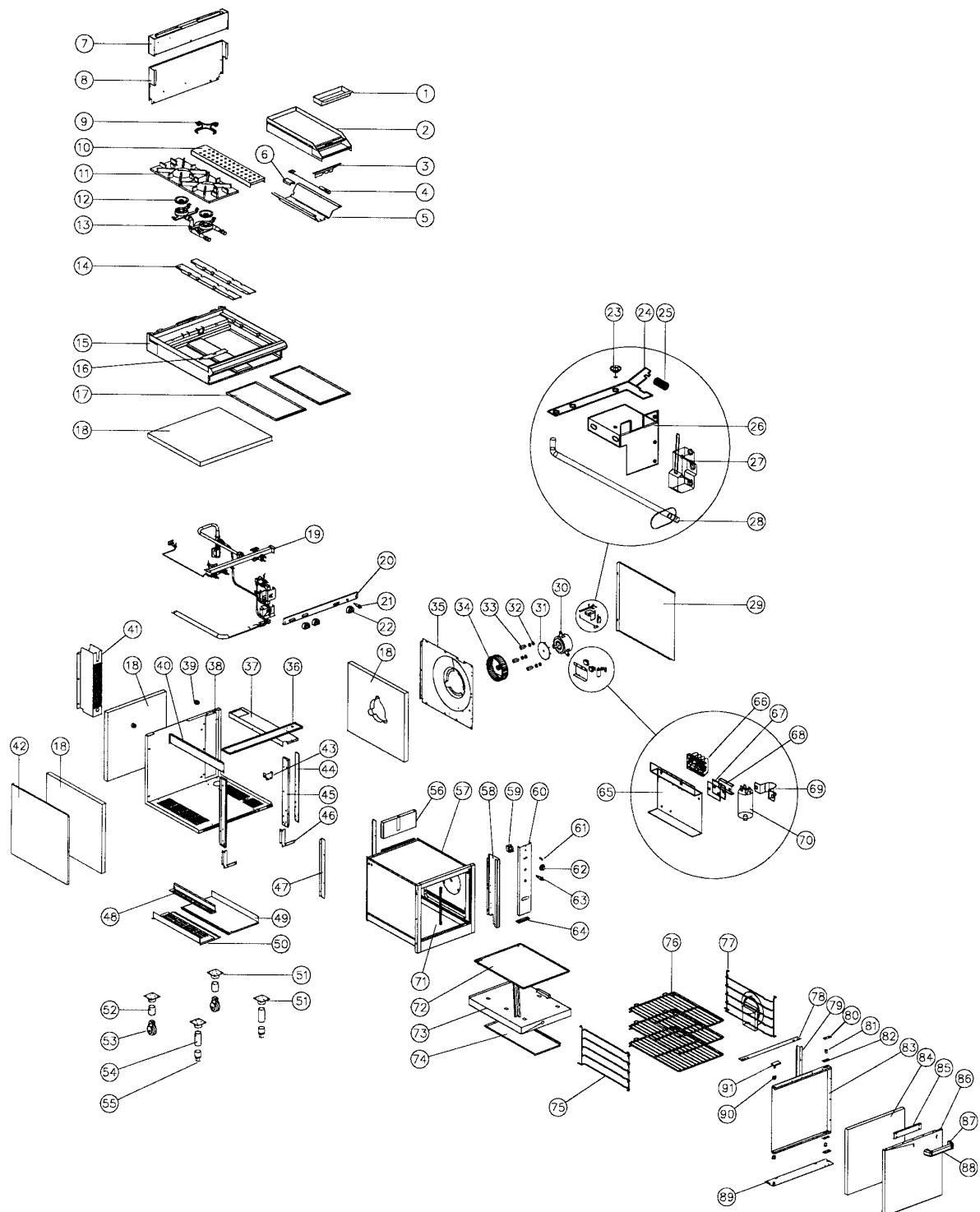
Pos	Part No	Description
1	016511	TROUGH TRAY
2	016385	GRIDDLE ('C' OPTION)
3	019424	HEAT SHIELD
4	014105	GRIDDLE BURNER
5	019431	GRIDDLE REFLECTOR
6	014106	GRIDDLE BURNER BRACKET
7	012861	SPLASHBACK
8	012848	HOB BACK PANEL
9	016659	POT STAND SPIDER
10	004211	POT SUPPORT SPACER
11	004125	POT STAND
12	004078	BURNER CAP
13	004079	OPEN BURNER ASSEMBLY - FRONT
	004080	OPEN BURNER ASSEMBLY - REAR
14	015439	POT SUPPORT
15	012854	HOB
16	017609	HEAT SHIELD (-FFP UNITS ONLY)
17	004158	HOB TRAY
18	-----	INSULATION
19	-----	GAS CONTROL ASSEMBLY (SEE SECTION 10.2.1 & 10.3.1)
20	004743	HOB CONTROL PANEL G54C
	004744	HOB CONTROL PANEL G54D
20	004483	HOB CONTROL PANEL G54C -FFP
	004482	HOB CONTROL PANEL G54D -FFP
20	004752	HOB CONTROL PANEL G54C LH
21	020119	PIEZO IGNITOR
22	013202	KNOB ASSEMBLY
23	003396	PIVOT PIN
24	012362	LEVER ARM
25	014397	MICROSWITCH SPRING
26	012335	MICROSWITCH BRACKET
27	017928	MICROSWITCH
28	019484	MICROSWITCH ROD
29	015045	SIDE PANEL - R.H
30	019479K	FAN MOTOR KIT (INCLUDES ITEMS 31,32)
31	010866	COOLING DISC
32	010859	RUBBER BUSHES
33	013627	MOUNTING SPACER
34	010856	FAN WHEEL
35	015043	SIDE INSULATION PANEL
36	012365	TOP FRONT HORIZONTAL
37	012368	TOP PANEL - R.H
38	012363	BODY
39	014157	SPACER
40	012369	TOP PANEL - L.H
41	014798	GAS HOUSING
42	012374	SIDE PANEL - L.H
43	012423	INJECTOR SUPPORT BRACKET
44	012366	UPRIGHT - R.H
45	012367	DOOR UPRIGHT
46	012370	OVEN BRACE
47	012408	OVEN SECURING BRACKET
48	012607	BURNER SHIELD
49	012412	INSULATION TRAY
50	012411	BOTTOM BAFFLE
51	004634	LEG SUPPORT
52	013661	LEG TUBE - CASTOR
	015139	CASTOR ASSEMBLY (52 & 53 ASSEMBLED)

53	012776	CASTOR ASSEMBLY
	015652	CASTOR YOKE
	011046	WHEEL - 75mm
	014854	WHEEL PIN
54	014873	LEG TUBE - ADJUSTABLE
	014872	ADJUSTABLE LEG ASSEMBLY (54 & 55 ASSEMBLED)
55	010990	ADJUSTABLE FOOT
56	012233	VENT
57	004337	OVEN
58	012373	SPACER PANEL
59	011987	THERMOSTAT
60	004658	CONTROL PANEL
61	013528	PILOT LIGHT
62	015563	KNOB
63	020119	PIEZO IGNITOR
64	004144	HINGE
65	012077	TERMINAL BLOCK BRACKET
66	013586	TERMINAL BLOCK
67	002441	CABLE INSULATOR
68	002138	CABLE CLAMP
69	010023	SADDLE CLAMP
70	010909	CAPACITOR
71	017961	PHIAL GUARD
72	004140	BAFFLE TRAY
73	004142	BURNER BOX
74	011509	FLAME BAFFLE
75	011514	RACK SUPPORT - LH
76	012424	OVEN RACK
77	012610	RACK SUPPORT - R.H
78	012372	OVEN TOP TRIM
79	012371	OVEN TRIM - RH
80	010254	STRIKER PLATE
81	011005	BALL CATCH & LOCKNUT
82	018789	BALL CATCH PLATE
83	004332	DOOR INNER
84	-----	INSULATION
85	018138	HANDLE STIFFENER
86	012406	DOOR OUTER
87	018081K	HANDLE END CAP
88	018131	DOOR HANDLE
89	013656	DOOR SUPPORT PLATE
90	013655	DOOR BUSH
91	013654	TOP HINGE PLATE

GAS TYPE CONVERSION KITS - G54

Model	Serial Numbers		Country	Conversion Kit		
	From	To		→ LPG	→ Butane	→ Natural
G54 C	126846	→	Australia only	22921	Use NZ LPG kit	22931
			NZ / Other countries	26244		
	←	126845		16764 & 12448	On request	16752 & 12503
G54 D	126846	→	Australia only	22922	Use NZ LPG kit	22932
			NZ / Other countries	26245		
	←	126845		16765 & 12448	On request	16753 & 12503

10.1.2 G54 Main Assembly - To S/N 224659



Pos	Part No	Description
1	016511	TROUGH TRAY
2	016385	GRIDDLE ('C' OPTION)
3	019424	HEAT SHIELD
4	014105	GRIDDLE BURNER
5	019431	GRIDDLE REFLECTOR
6	014106	GRIDDLE BURNER BRACKET
7	012861	SPLASHBACK
8	012848	HOB BACK PANEL
9	016659	POT STAND SPIDER
10	004211	POT SUPPORT SPACER
11	004125	POT STAND
12	004078	BURNER CAP
13	004079	OPEN BURNER ASSEMBLY - FRONT
	004080	OPEN BURNER ASSEMBLY - REAR
14	015439	POT SUPPORT
15	012854	HOB
16	017609	HEAT SHIELD (-FFP UNITS ONLY)
17	004158	HOB TRAY
18	-----	INSULATION
19	-----	GAS CONTROL ASSEMBLY (SEE SECTION 10.2 & 10.3)
20	004405	HOB CONTROL PANEL G54C (to S/N 125327)
	004743	HOB CONTROL PANEL G54C (from S/N 125327)
	004406	HOB CONTROL PANEL G54D (to S/N 125327)
	004744	HOB CONTROL PANEL G54D (from S/N 125327)
20	004483	HOB CONTROL PANEL G54C -FFP
	004482	HOB CONTROL PANEL G54D -FFP
20	004474	HOB CONTROL PANEL G54C LH (to S/N 125327)
	004752	HOB CONTROL PANEL G54C LH (from S/N 125327)
21	020119	PIEZO IGNITOR
22	013202	KNOB ASSEMBLY
23	003396	PIVOT PIN
24	012362	LEVER ARM
25	014397	MICROSWITCH SPRING
26	012335	MICROSWITCH BRACKET
27	017928	MICROSWITCH
28	019484	MICROSWITCH ROD
29	015045	SIDE PANEL - R.H
30	019479K	FAN MOTOR KIT (INCLUDES ITEMS 31,32)
31	010866	COOLING DISC
32	010859	RUBBER BUSHES
33	013627	MOUNTING SPACER
34	010856	FAN WHEEL
35	015043	SIDE INSULATION PANEL
36	012365	TOP FRONT HORIZONTAL
37	012368	TOP PANEL - R.H
38	012363	BODY
39	014157	SPACER
40	012369	TOP PANEL - L.H
41	014798	GAS HOUSING
42	012374	SIDE PANEL - L.H
43	012423	INJECTOR SUPPORT BRACKET
44	012366	UPRIGHT - R.H
45	012367	DOOR UPRIGHT
46	012370	OVEN BRACE
47	012408	OVEN SECURING BRACKET
48	012607	BURNER SHIELD
49	012412	INSULATION TRAY
50	012411	BOTTOM BAFFLE

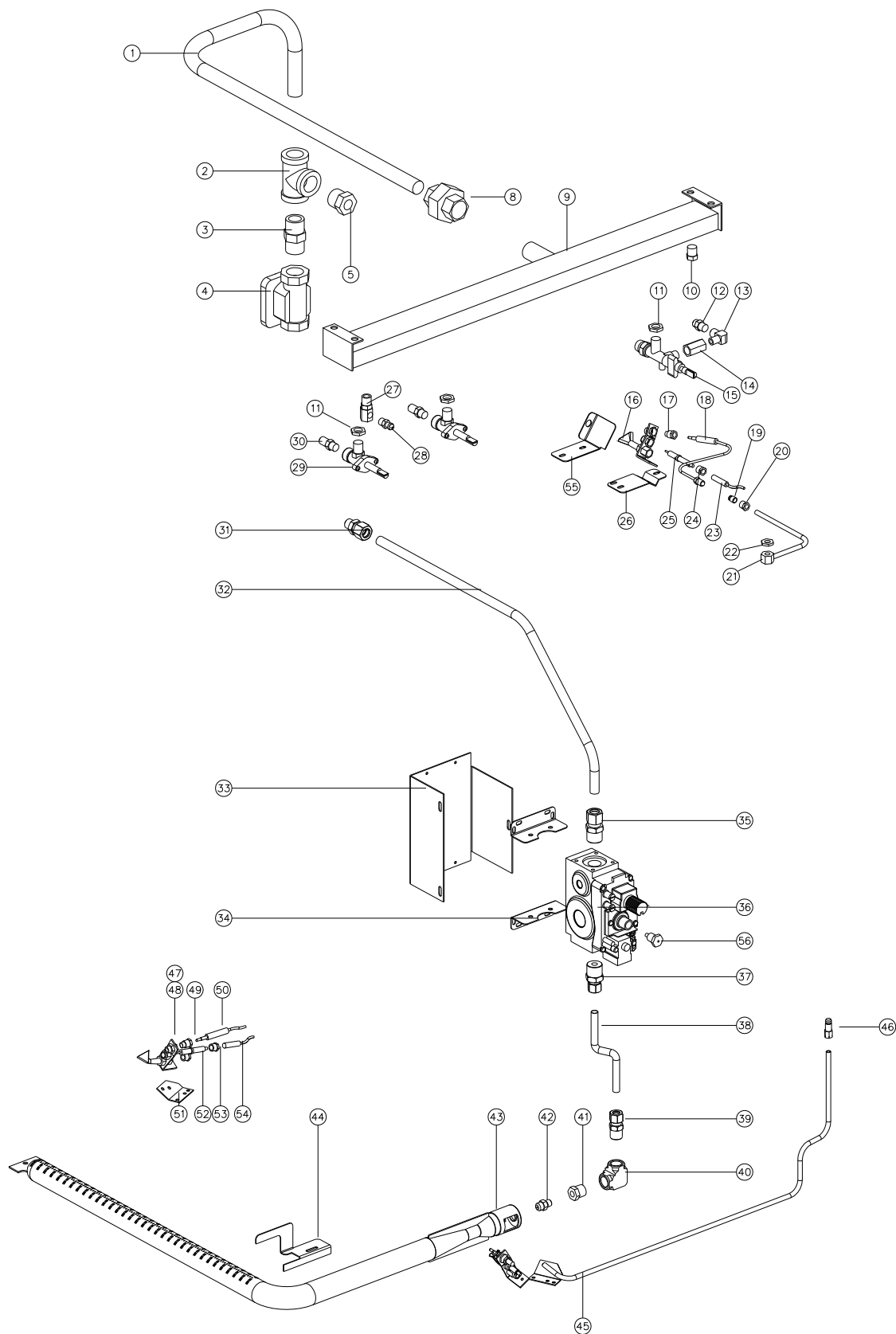
51	004634	LEG SUPPORT
52	013661	LEG TUBE - CASTOR
	015139	CASTOR ASSEMBLY (52 & 53 ASSEMBLED)
53	012776	CASTOR ASSEMBLY
	015652	CASTOR YOKE
	011046	WHEEL - 75mm
	014854	WHEEL PIN
54	014873	LEG TUBE - ADJUSTABLE
	014872	ADJUSTABLE LEG ASSEMBLY (54 & 55 ASSEMBLED)
55	010990	ADJUSTABLE FOOT
56	012233	VENT
57	004337	OVEN
58	012373	SPACER PANEL
59	011987	THERMOSTAT
60	004658	CONTROL PANEL
61	013528	PILOT LIGHT
62	015563	KNOB
63	020119	PIEZO IGNITOR
64	004144	HINGE
65	012077	TERMINAL BLOCK BRACKET
66	013586	TERMINAL BLOCK
67	002441	CABLE INSULATOR
68	002138	CABLE CLAMP
69	010023	SADDLE CLAMP
70	010909	CAPACITOR
71	017961	PHIAL GUARD
72	004140	BAFFLE TRAY
73	004142	BURNER BOX
74	011509	FLAME BAFFLE
75	011514	RACK SUPPORT - LH
76	012424	OVEN RACK
77	012610	RACK SUPPORT - R.H
78	012372	OVEN TOP TRIM
79	012371	OVEN TRIM - RH
80	010254	STRIKER PLATE
81	011005	BALL CATCH & LOCKNUT
82	018789	BALL CATCH PLATE
83	004332	DOOR INNER
84	-----	INSULATION
85	018138	HANDLE STIFFENER
86	012406	DOOR OUTER
87	018081K	HANDLE END CAP
88	018131	DOOR HANDLE
89	013656	DOOR SUPPORT PLATE
90	013655	DOOR BUSH
91	013654	TOP HINGE PLATE

GAS TYPE CONVERSION KITS - G54

Model	Serial Numbers		Country	Conversion Kit		
	From	To		→ LPG	→ Butane	→ Natural
G54 C	126846	→	Australia only	22921	Use NZ LPG kit	22931
			NZ / Other countries	26244		
	←	126845		16764 & 12448	On request	16752 & 12503
G54 D	126846	→	Australia only	22922	Use NZ LPG kit	22932
			NZ / Other countries	26245		
	←	126845		16765 & 12448	On request	16753 & 12503

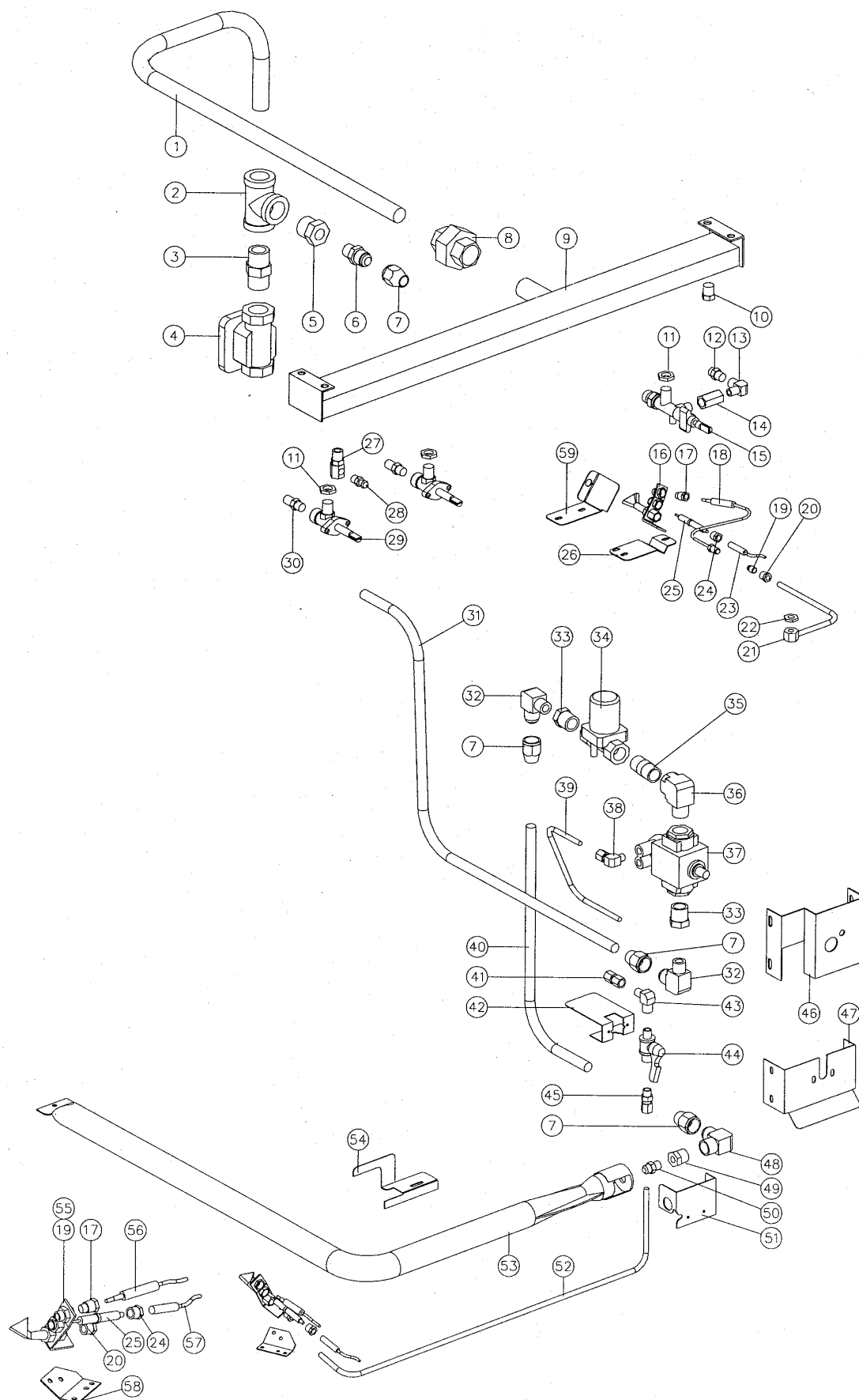
10.2 G54 GAS PIPING ASSEMBLY (STD)

10.2.1 G54 Gas Piping Assembly (Std) - From S/N 224660



Pos	Part No	Description
1	014803	HOB SUPPLY PIPE
2	011833	TEE - 3/4"
3	013473	NIPPLE
4	011853	REGULATOR (NATURAL GAS ONLY)
5	012048	REDUCING BUSH - 3/8" x 3/4"
8	011827	MACK UNION
9	004146	MANIFOLD G54
10	011148	PLUG - 1/4"
11	013215	BACKNUT - 1/4" BSP
12	032130	GRIDDLE INJECTOR Ø1.30 mm - LPG
	032210	GRIDDLE INJECTOR Ø2.10 mm - NATURAL GAS
13	011634	PILOT ELBOW (UP TO S/N 278399) (NOT AVAILABLE REFER ITEM 15, 016518)
	026022	PILOT ELBOW (FROM S/N 278400) (NOT AVAILABLE REFER ITEM 15, 016518)
14	012918	OUTLET CONNECTOR (NOT AVAILABLE REFER ITEM 15, 016518)
15	016518	GRIDDLE TAP ASSEMBLY (INCLUDES ITEMS 11,13,14,22)
16	019215K	GRIDDLE PILOT BURNER KIT (INCLUDES ITEMS 17,19,20,24,25)
17	018741	CLAMP NUT
18	019428	THERMOCOUPLE - GRIDDLE
	019575	M10 THERMOCOUPLE SPLIT NUT
19	018692	PILOT INJECTOR Ø0.20mm - LP GAS
	018693	PILOT INJECTOR Ø0.32mm - NATURAL GAS
20	018740	COMPRESSION NUT 1/4"
	018739	OLIVE
21	020656	GRIDDLE PILOT SUPPLY TUBE
22	012919	BACKNUT
23	018095	HIGH TENSION LEAD
24	018742	ELECTRODE NUT
25	018744	PILOT ELECTRODE
26	019425	GRIDDLE PILOT BRACKET
27	011741	PRESSURE ADAPTOR
28	019371	PRESSURE TEST POINT
29	020639	GAS TAP
30	034130	OPEN BURNER INJECTOR Ø1.30 mm - LPG
	034210	OPEN BURNER INJECTOR Ø2.10 mm - NATURAL GAS
31	013837	CONNECTOR
32	024136	CONTROL SUPPLY PIPE
33	024133	CONTROL MOUNTING BRACKET
34	020064	GAS VALVE BRACKET
35	014408	CONNECTOR
36	020103K	GAS CONTROL KIT (INCLUDES ITEM 56)
37	022689	INJECTOR CONNECTOR
38	022686	1/4" SS FLEXI PIPE
39	021288	CONNECTOR
40	024142	ELBOW – 3/8" BSP FF
41	011601	REDUCING BUSH
42	032150	OVEN INJECTOR Ø1.50mm - LPG
	032250	OVEN INJECTOR Ø2.50mm - NATURAL GAS
43	012248	OVEN BURNER
44	022248	BURNER RETAINING BRACKET
45	024137	PILOT SUPPLY TUBE
46	012753	CONNECTOR – 1/8" x 1/4"
47	018691K	OVEN PILOT BURNER KIT (INCLUDES ITEMS 20,48,49,52,53)
48	018692	PILOT INJECTOR Ø0.20mm - LPG
	018693	PILOT INJECTOR Ø0.32mm - NATURAL GAS
49	018741	CLAMP NUT
50	020253	THERMOCOUPLE – 1200mm
51	024267	OVEN PILOT BRACKET
52	018744	PILOT ELECTRODE
53	018742	ELECTRODE NUT
54	019407	HIGH TENSION LEAD
55	023863	GRIDDLE PILOT DRAFT BAFFLE

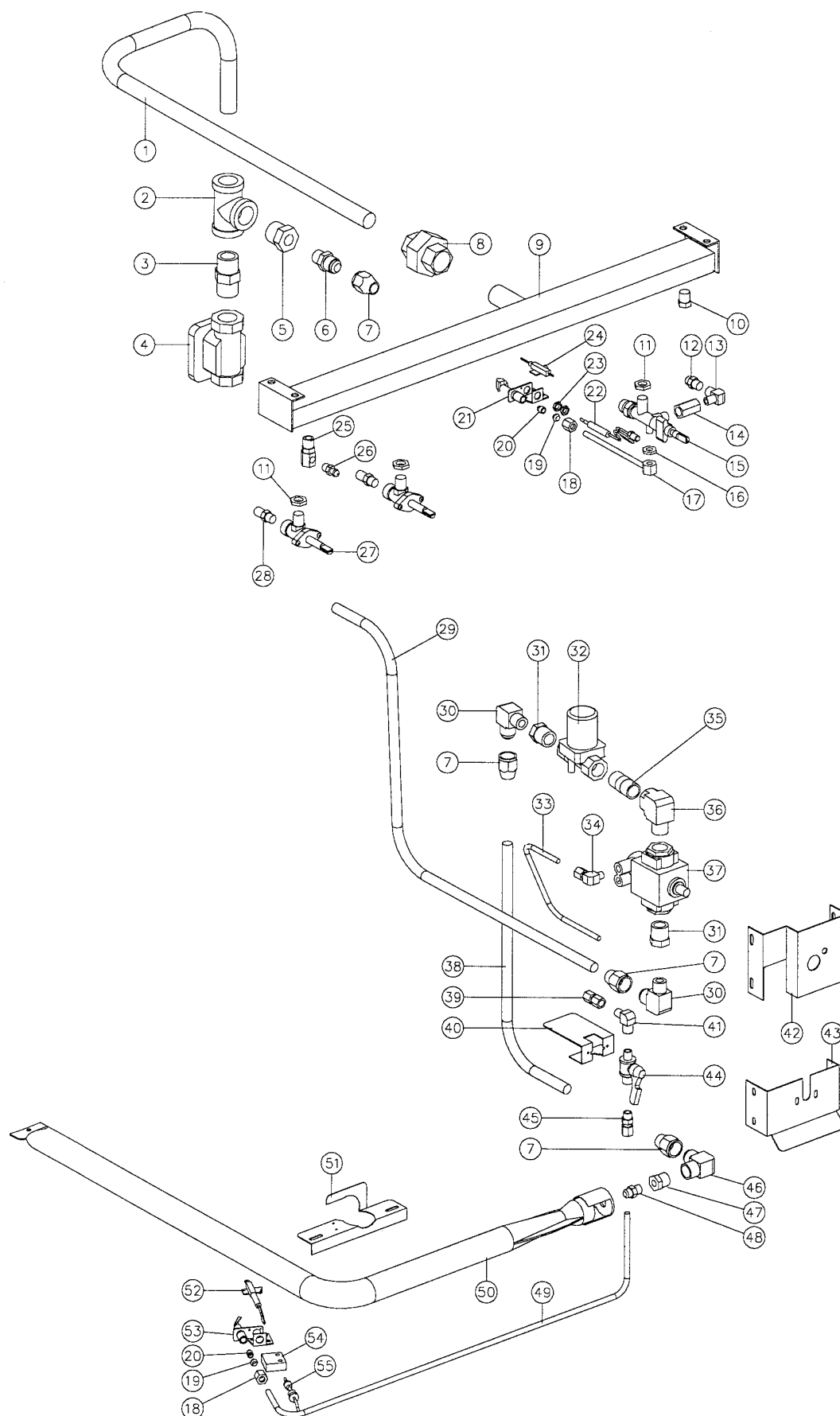
10.2.2 G54 Gas Piping Assembly (Std) - From S/N 126846 to 224659



Pos	Part No	Description
1	14803	HOB SUPPLY PIPE
2	11833	TEE - 3/4"
3	13473	NIPPLE
4	11853	REGULATOR (NATURAL GAS ONLY)
5	12048	REDUCING BUSH - 3/8" x 3/4"
6	11003	CONNECTOR - 1/2" x 3/8"
7	11002	CONE NUT
8	11827	MACK UNION
9	04146	MANIFOLD
10	11148	PLUG - 1/4"
11	13215	BACKNUT - 1/4" BSP
12	32130	GRIDDLE INJECTOR Ø1.30 mm - LPG
	32210	GRIDDLE INJECTOR Ø2.10 mm - NATURAL GAS
13	11634	PILOT ELBOW (UP TO S/N 278399) (NOT AVAILABLE REFER ITEM 15, 016518)
	026022	PILOT ELBOW (FROM S/N 278400) (NOT AVAILABLE REFER ITEM 15, 016518)
14	12918	OUTLET CONNECTOR (NOT AVAILABLE REFER ITEM 15, 016518)
15	16518	GRIDDLE TAP ASSEMBLY (INCLUDES ITEMS 11,13,14,22)
16	19215K	GRIDDLE PILOT BURNER KIT (INCLUDES ITEMS 17,19,20,24,25)
17	18741	CLAMP NUT
18	19428	THERMOCOUPLE - GRIDDLE
19	18692	PILOT INJECTOR Ø0.20mm - LP GAS
	18693	PILOT INJECTOR Ø0.32mm - NATURAL GAS
20	18740	COMPRESSION NUT 1/4"
	18739	OLIVE
21	20656	GRIDDLE PILOT SUPPLY TUBE
22	12919	BACKNUT
23	18095	HIGH TENSION LEAD
24	18742	ELECTRODE NUT
25	18744	PILOT ELECTRODE
26	19425	GRIDDLE PILOT BRACKET
27	11741	PRESSURE ADAPTOR
28	19371	PRESSURE TEST POINT
29	20639	GAS TAP
30	34130	OPEN BURNER INJECTOR Ø1.30 mm - LPG
	34210	OPEN BURNER INJECTOR Ø2.10 mm - NATURAL GAS
31	14801	CONTROL SUPPLY PIPE
32	11747	ELBOW - 3/8" x 1/2"
33	11656	REDUCING BUSH - 3/8" x 1/2"
34	19454	SOLENOID VALVE
35	13235	NIPPLE - 1/2"
36	18350	ELBOW - 1/2"
37	13153	FLAME FAILURE CONTROL
38	13836	ELBOW - 1/8" X 1/4"
39	13190	PILOT SUPPLY TUBE
40	12250	OVEN SUPPLY TUBE
41	11742	CONNECTOR - 1/8" x 1/4"
42	13184	CLAMP BRACKET
43	11634	ELBOW - 1/8"
44	13155	BALL VALVE
45	12753	CONNECTOR - 1/8" x 1/4"
46	13182	SAFETY MOUNTING BRACKET
47	13183	BALL VALVE MOUNTING BRACKET
48	11600	ELBOW - 3/8" x 1/2"
49	11601	REDUCING BUSH - 3/8" x 1/8"

50	32150	OVEN INJECTOR Ø1.50mm - LPG
	32230	OVEN INJECTOR Ø2.30mm - NATURAL GAS
51	12423	INJECTOR SUPPORT BRACKET
52	19445	OVEN PILOT SUPPLY TUBE
53	12248	OVEN BURNER
54	22248	BURNER RETAINING BRACKET
55	18691K	OVEN PILOT BURNER KIT (INCLUDES ITEMS 17,19,20,24,25)
56	20253	THERMOCOUPLE- 1200mm
57	19407	HIGH TENSION LEAD
58	19330	OVEN PILOT BRACKET
59	23863	GRIDDLE PILOT DRAFT BAFFLE (FROM S/N 215176)

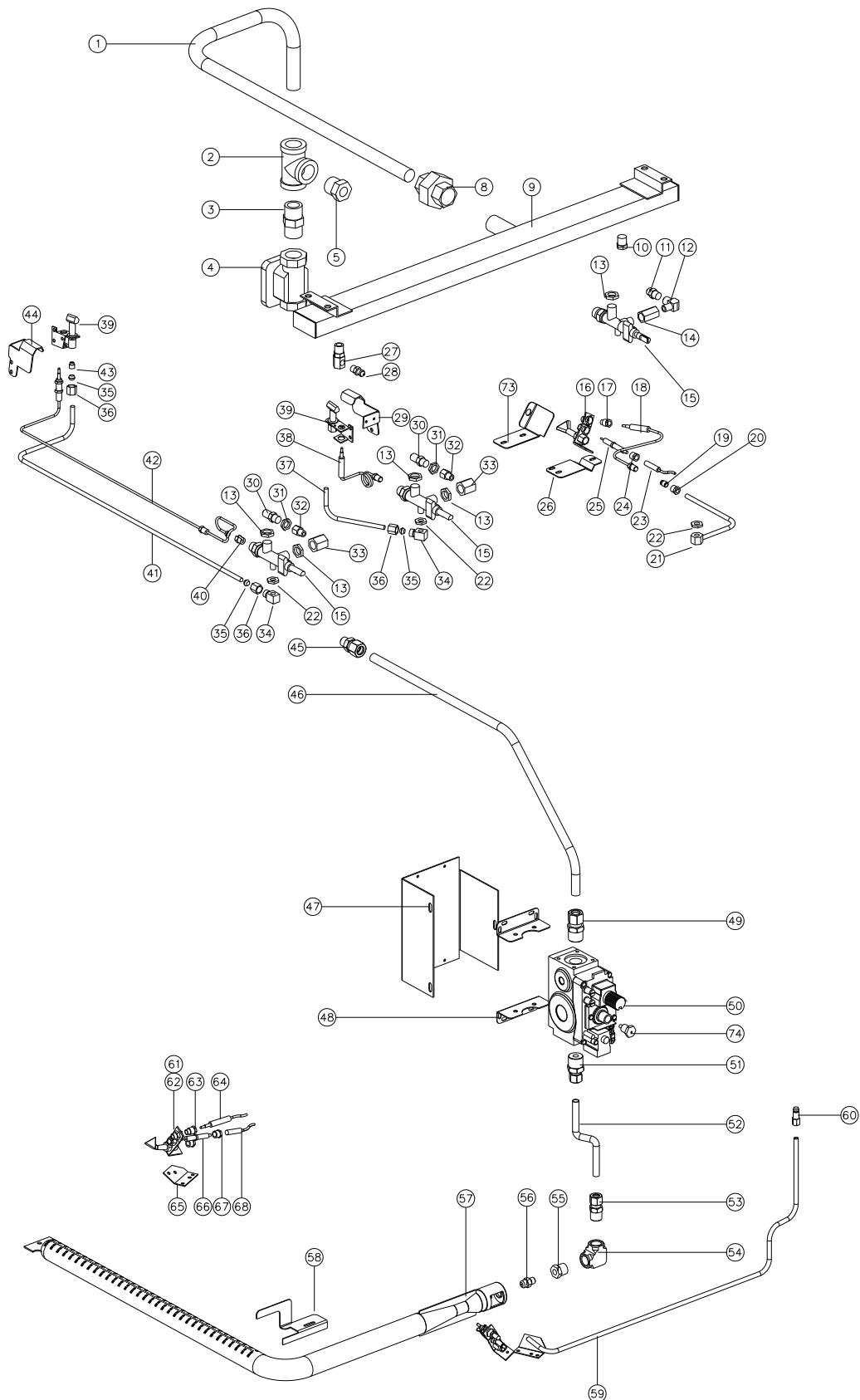
10.2.3 G54 Gas Piping Assembly (Std) - To S/N 126846



Pos	Part No	Description
1	014803	HOB SUPPLY PIPE
2	011833	TEE - 3/4"
3	013473	NIPPLE
4	011853	REGULATOR (NATURAL GAS ONLY)
5	012048	REDUCING BUSH - 3/8" x 3/4"
6	011003	CONNECTOR - 1/2" x 3/8"
7	011002	CONE NUT
8	011827	MACK UNION
9	004146	MANIFOLD
10	011148	PLUG - 1/4"
11	013215	BACKNUT - 1/4" BSP
12	032130	GRIDDLE INJECTOR Ø1.30 mm - LPG
	032210	GRIDDLE INJECTOR Ø2.10 mm - NATURAL GAS
13	011634	PILOT ELBOW (UP TO S/N 278399) (NOT AVAILABLE REFER ITEM 15, 016518)
	026022	PILOT ELBOW (FROM S/N 278400) (NOT AVAILABLE REFER ITEM 15, 016518)
14	012918	OUTLET CONNECTOR (NOT AVAILABLE REFER ITEM 15, 016518)
15	016518	GRIDDLE TAP ASSY (ASSEMBLED WITH ITEMS 11,13,14,16)
16	012919	BACKNUT- 5/16" UNF
17	012921	PILOT TUBE ASSEMBLY
18	011287	NUT (PART OF ITEM 21)
19	011286	OLIVE (PART OF ITEM 21)
20	011650	PILOT SPUD - LPG (PART OF ITEM 21)
	011651	PILOT SPUD - NATURAL (PART OF ITEM 21)
21	012699K	GRIDDLE PILOT BURNER KIT (ASSEMBLED WITH ITEMS 18,19,20)
22	012916	THERMOCOUPLE - 300 mm
23	-----	THERMOCOUPLE NUTS (PART OF ITEM 22)
24	013801	PIEZO ELECTRODE
25	011741	PRESSURE ADAPTOR
26	011337	PRESSURE TEST POINT
27	020639	GAS TAP
28	034130	OPEN BURNER INJECTOR Ø1.30 mm - LPG
	034210	OPEN BURNER INJECTOR Ø2.10 mm - NATURAL GAS
29	014801	CONTROL SUPPLY PIPE
30	011747	ELBOW - 3/8" x 1/2"
31	011656	REDUCING BUSH - 3/8" x 1/2"
32	019454	SOLENOID VALVE
33	013190	PILOT SUPPLY TUBE
34	013836	ELBOW - 1/8" X 1/4"
35	013235	NIPPLE - 1/2"
36	018350	ELBOW - 1/2"
37	013153	FLAME FAILURE CONTROL
38	012250	OVEN SUPPLY TUBE
39	011742	CONNECTOR - 1/8" x 1/4"
40	013184	CLAMP BRACKET
41	011634	ELBOW - 1/8"
42	013182	SAFETY MOUNTING BRACKET
43	013183	BALL VALVE MOUNTING BRACKET
44	013155	BALL VALVE
45	012753	CONNECTOR - 1/8" x 1/4"
46	011600	ELBOW - 3/8" x 1/2"
47	011601	REDUCING BUSH - 3/8" x 1/8"
48	032150	OVEN INJECTOR Ø1.50mm - LPG
	032230	OVEN INJECTOR Ø2.30mm - NATURAL GAS
49	013263	OVEN PILOT SUPPLY TUBE
50	012248	OVEN BURNER
51	012608	PILOT BRACKET
52	018347	IGNITOR ELECTRODE - OVEN
	018252	ELECTRODE / HT LEAD ASSEMBLY (NOT ILLUSTRATED)
53	012331K	OVEN PILOT BURNER KIT (USES ITEM 20 PILOT SPUDS)
54	004154	PILOT SPACER
55	011771	THERMOCOUPLE

10.3 G54 GAS PIPING ASSEMBLY (FFP)

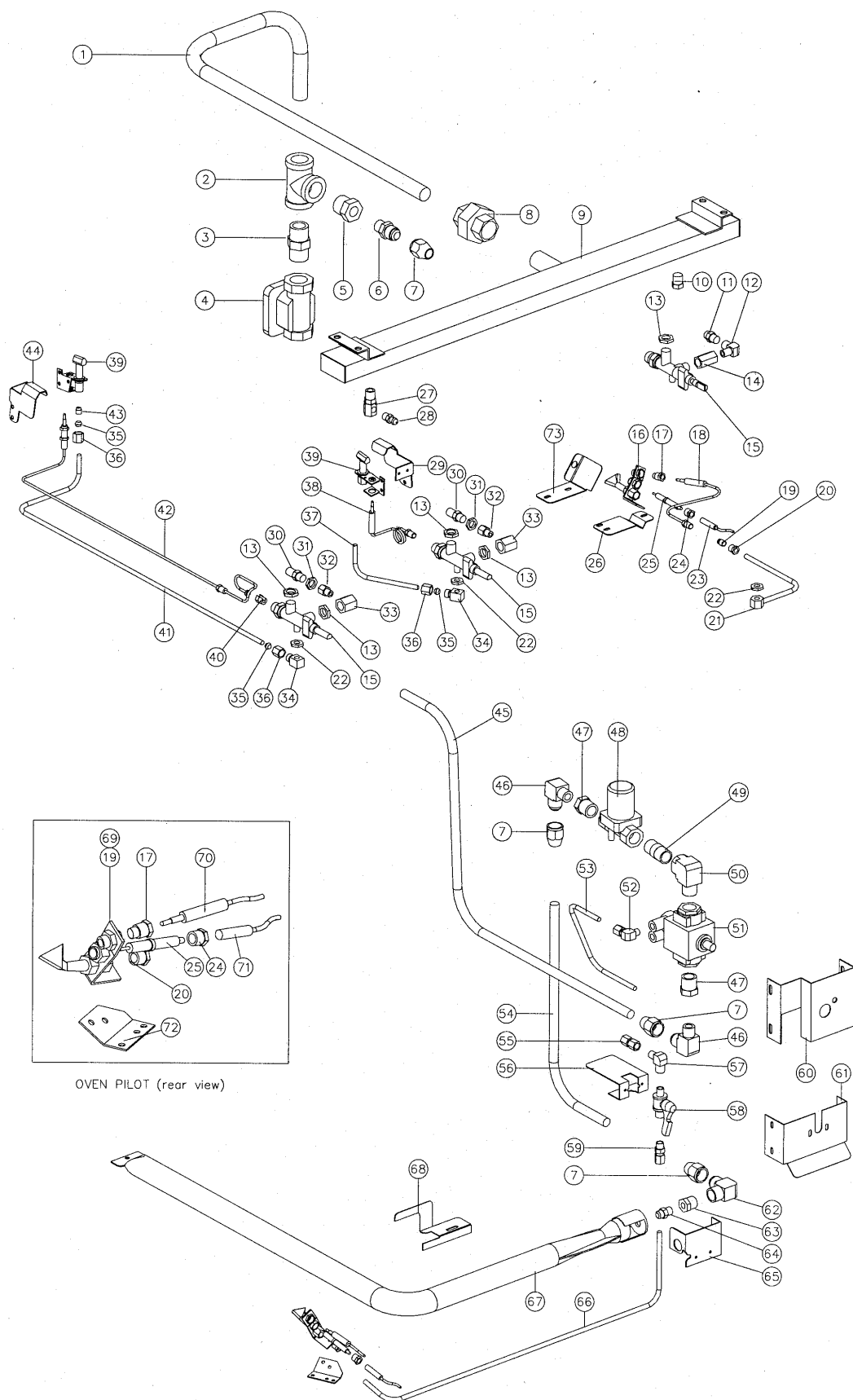
10.3.1 G54 Gas Piping Assembly (FFP) - From S/N 224660



Pos	Part No	Description
1	014803	HOB SUPPLY PIPE
2	011833	TEE - 3/4"
3	013473	NIPPLE
4	011853	REGULATOR (NATURAL GAS ONLY)
5	012048	REDUCING BUSH - 3/8" x 3/4"
8	011827	MACK UNION
9	004146	MANIFOLD G54
10	011148	PLUG - 1/4"
11	013215	BACKNUT - 1/4" BSP
12	032130	GRIDDLE INJECTOR Ø1.30 mm - LPG
	032210	GRIDDLE INJECTOR Ø2.10 mm - NATURAL GAS
13	011634	PILOT ELBOW (UP TO S/N 278399) (NOT AVAILABLE REFER ITEM 15, 016518)
	026022	PILOT ELBOW (FROM S/N 278400) (NOT AVAILABLE REFER ITEM 15, 016518)
14	012918	OUTLET CONNECTOR (NOT AVAILABLE REFER ITEM 15, 016518)
15	016518	GRIDDLE TAP ASSEMBLY (INCLUDES ITEMS 11,13,14,22)
	017611	OPEN BURNER TAP ASSEMBLY (INCLUDES ITEMS 11,22,33)
16	019215K	GRIDDLE PILOT BURNER KIT (INCLUDES ITEMS 17,19,20,24,25)
17	018741	CLAMP NUT
18	019428	THERMOCOUPLE - GRIDDLE
	019575	M10 THERMOCOUPLE SPLIT NUT
19	018692	PILOT INJECTOR Ø0.20mm - LP GAS
	018693	PILOT INJECTOR Ø0.32mm - NATURAL GAS
20	018740	COMPRESSION NUT 1/4"
	018739	OLIVE
21	020656	GRIDDLE PILOT SUPPLY TUBE
22	012919	BACKNUT
23	018095	HIGH TENSION LEAD
24	018742	ELECTRODE NUT
25	018744	PILOT ELECTRODE
26	019425	GRIDDLE PILOT BRACKET
27	011741	PRESSURE ADAPTOR
28	019371	PRESSURE TEST POINT
29	017607	PILOT SHROUD - FRONT
30	034130	OPEN BURNER INJECTOR Ø1.30 mm - LPG
	034210	OPEN BURNER INJECTOR Ø2.10 mm - NATURAL GAS
31	011740	JET BACKNUT (UP TO S/N 246144)
32	017613	ADAPTOR - 1/8" BSP M/F (NOT AVAILABLE, REFER TO ITEM 15, 017611)
33	017612	INJECTOR ELBOW (UP TO S/N 278399)(NOT AVAILABLE, REFER TO ITEM 15, 017611)
	026023	INJECTOR ELBOW (FROM S/N 278400)(NOT AVAILABLE, REFER TO ITEM 15, 017611)
34	017079	PILOT OUTLET FITTING
35	011286	OLIVE
36	011287	NUT
37	017614	PILOT TUBE FRONT
38	012916	THERMOCOUPLE - 300 mm
	024573	THERMOCOUPLE LOCK-NUT (NOT ILLUSTRATED)
39	013000K	PILOT BURNER KIT (INCLUDES ITEM 43)
40	019575	THERMOCOUPLE SPLIT NUT
41	017615	PILOT TUBE REAR
42	017617	THERMOCOUPLE - 750 mm
	024573	THERMOCOUPLE LOCK-NUT (NOT ILLUSTRATED)
43	011650	PILOT SPUD - LPG
	011651	PILOT SPUD - NATURAL
44	017608	PILOT SHROUD - REAR

45	013837	CONNECTOR
46	024136	CONTROL SUPPLY PIPE
47	024133	CONTROL MOUNTING BRACKET
48	020064	GAS VALVE BRACKET
49	014408	CONNECTOR
50	020103K	GAS CONTROL KIT (INCLUDES ITEM 74)
51	022689	INJECTOR CONNECTOR
52	022686	¼" SS FLEXI PIPE
53	021288	CONNECTOR
54	024142	ELBOW – 3/8" BSP FF
55	011601	REDUCING BUSH
56	032150	OVEN INJECTOR Ø1.50 mm - LPG
	032250	OVEN INJECTOR Ø2.50 mm - NAT
57	012248	OVEN BURNER
58	022248	BURNER RETAINING BRACKET
59	024137	PILOT SUPPLY TUBE
60	012753	CONNECTOR – 1/8" x 1/4"
61	018691K	OVEN PILOT BURNER KIT (INCLUDES ITEMS 20,62,63,66,67)
62	018692	PILOT INJECTOR Ø0.20 mm - LPG
	018693	OVEN INJECTOR Ø0.32 mm – NAT
63	018741	CLAMP NUT
64	020253	THERMOCOUPLE – 1200mm
65	024267	OVEN PILOT BRACKET
66	018744	PILOT ELECTRODE
67	018742	ELECTRODE NUT
68	019407	HIGH TENSION LEAD
73	023863	GRIDDLE PILOT DRAFT BAFFLE
74	018096	REGULATOR KNOCK-OUT PIN (ALL GASES)

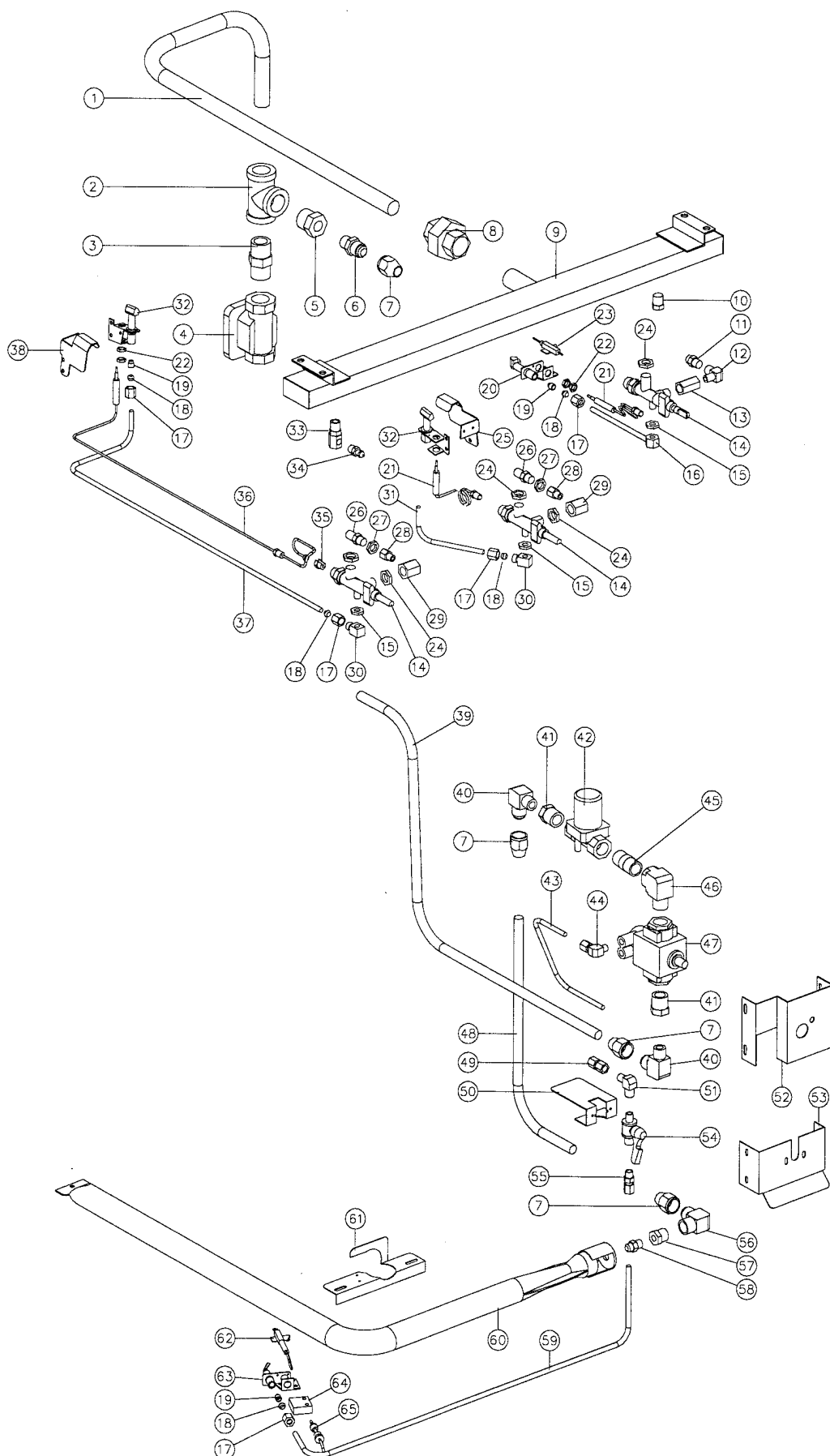
10.3.2 G54 Gas Piping Assembly (FFP) - From S/N 126846 to 224659



Pos	Part No	Description
1	014803	HOB SUPPLY PIPE
2	011833	TEE - 3/4"
3	013473	NIPPLE
4	011853	REGULATOR (NATURAL GAS ONLY)
5	012048	REDUCING BUSH - 3/8" x 3/4"
6	011003	CONNECTOR - 1/2" x 3/8"
7	011002	CONE NUT
8	011827	MACK UNION
9	004146	MANIFOLD G54
10	011148	PLUG - 1/4"
11	013215	BACKNUT - 1/4" BSP
12	032130	GRIDDLE INJECTOR Ø1.30 mm - LPG
	032210	GRIDDLE INJECTOR Ø2.10 mm - NATURAL GAS
13	011634	PILOT ELBOW (UP TO S/N 278399) (NOT AVAILABLE REFER ITEM 15, 016518)
	026022	PILOT ELBOW (FROM S/N 278400) (NOT AVAILABLE REFER ITEM 15, 016518)
14	012918	OUTLET CONNECTOR (NOT AVAILABLE REFER ITEM 15, 016518)
15	016518	GRIDDLE TAP ASSEMBLY (INCLUDES ITEMS 11,13,14,22)
	017611	OPEN BURNER TAP ASSEMBLY (INCLUDES ITEMS 11,22,33)
16	019215K	GRIDDLE PILOT BURNER KIT (INCLUDES ITEMS 17,19,20,24,25)
17	018741	CLAMP NUT
18	019428	THERMOCOUPLE - GRIDDLE
	019575	M10 THERMOCOUPLE SPLIT NUT
19	018692	PILOT INJECTOR Ø0.20mm - LP GAS
	018693	PILOT INJECTOR Ø0.32mm - NATURAL GAS
20	018740	COMPRESSION NUT 1/4"
	018739	OLIVE
21	020656	GRIDDLE PILOT SUPPLY TUBE
22	012919	BACKNUT
23	018095	HIGH TENSION LEAD
24	018742	ELECTRODE NUT
25	018744	PILOT ELECTRODE
26	019425	GRIDDLE PILOT BRACKET
27	011741	PRESSURE ADAPTOR
28	019371	PRESSURE TEST POINT
29	017607	PILOT SHROUD - FRONT
30	034130	OPEN BURNER INJECTOR Ø1.30 mm - LPG
	034210	OPEN BURNER INJECTOR Ø2.10 mm - NATURAL GAS
31	011740	JET BACKNUT
32	017613	ADAPTOR - 1/8" BSP M/F (NOT AVAILABLE, REFER TO ITEM 15, 017611)
33	017612	INJECTOR ELBOW (UP TO S/N 278399)(NOT AVAILABLE, REFER TO ITEM 15, 017611)
	026023	INJECTOR ELBOW (FROM S/N 278400)(NOT AVAILABLE, REFER TO ITEM 15, 017611)
34	017079	PILOT OUTLET FITTING
35	011286	OLIVE
36	011287	NUT
37	017614	PILOT TUBE FRONT
38	012916	THERMOCOUPLE - 300 mm
	024573	THERMOCOUPLE LOCK-NUT (NOT ILLUSTRATED)
39	013000K	PILOT BURNER KIT
40	019575	THERMOCOUPLE SPLIT NUT
41	017615	PILOT TUBE REAR
42	017617	THERMOCOUPLE - 750 mm
	024573	THERMOCOUPLE LOCK-NUT (NOT ILLUSTRATED)
43	011650	PILOT SPUD - LPG

	011651	PILOT SPUD - NATURAL
44	017608	PILOT SHROUD - REAR
45	014801	CONTROL SUPPLY PIPE
46	011747	ELBOW - 3/8" x 1/2"
47	011656	REDUCING BUSH - 3/8" x 1/2"
48	019454	SOLENOID VALVE
49	013235	NIPPLE - 1/2"
50	018350	ELBOW - 1/2"
51	013153	FLAME FAILURE CONTROL
52	013836	ELBOW - 1/8" X 1/4"
53	013190	PILOT SUPPLY TUBE
54	012250	OVEN SUPPLY TUBE
55	011742	CONNECTOR - 1/8" x 1/4"
56	013184	CLAMP BRACKET
57	011634	ELBOW - 1/8"
58	013155	BALL VALVE
59	012753	CONNECTOR - 1/8" x 1/4"
60	013182	SAFETY MOUNTING BRACKET
61	013183	BALL VALVE MOUNTING BRACKET
62	011600	ELBOW - 3/8" x 1/2"
63	011601	REDUCING BUSH - 3/8" x 1/8"
64	032150	OVEN INJECTOR Ø1.50mm - LPG
	032230	OVEN INJECTOR Ø2.30mm - NATURAL GAS
65	012423	INJECTOR SUPPORT BRACKET
66	019445	OVEN PILOT SUPPLY TUBE
67	012248	OVEN BURNER
68	022248	BURNER RETAINING BRACKET
69	018691K	OVEN PILOT BURNER KIT (INCLUDES ITEMS 17,19,20,24,25)
70	020253	THERMOCOUPLE- 1200mm
71	019407	HIGH TENSION LEAD
72	019330	OVEN PILOT BRACKET
73	023863	GRIDDLE PILOT DRAFT BAFFLE (FROM S/N 215176)

10.3.3 G54 Gas Piping Assembly (FFP) - To S/N 126846



Pos	Part No	Description
1	014803	HOB SUPPLY PIPE
2	011833	TEE - 3/4"
3	013473	NIPPLE
4	011853	REGULATOR (NATURAL GAS ONLY)
5	012048	REDUCING BUSH - 3/8" x 3/4"
6	011003	CONNECTOR - 1/2" x 3/8"
7	011002	CONE NUT
8	011827	MACK UNION
9	004478	MANIFOLD
10	011148	PLUG - 1/4"
11	032130	GRIDDLE INJECTOR Ø1.30 mm - LPG
	032210	GRIDDLE INJECTOR Ø2.10 mm - NATURAL GAS
12	011634	PILOT ELBOW (UP TO S/N 278399) (NOT AVAILABLE REFER ITEM 14, 016518)
	026022	PILOT ELBOW (FROM S/N 278400) (NOT AVAILABLE REFER ITEM 14, 016518)
13	012918	OUTLET CONNECTOR (NOT AVAILABLE REFER ITEM 14, 016518)
14	016518	GRIDDLE TAP ASSY (ASSEMBLED WITH ITEMS 12,13,15,24)
	017611	OPEN BURNER TAP ASSEMBLY (INCLUDES ITEMS 12,15,29)
15	012919	BACKNUT- 5/16" UNF
16	012921	PILOT TUBE ASSEMBLY
17	011287	NUT (PART OF ITEM 20,63)
18	011286	OLIVE (PART OF ITEM 20,63)
19	011650	PILOT SPUD - LPG
	011651	PILOT SPUD - NATURAL
20	012699K	GRIDDLE PILOT BURNER KIT (ASSEMBLED WITH ITEMS 17,18,19)
21	012916	THERMOCOUPLE - 300 mm
22	024573	THERMOCOUPLE LOCK-NUT
23	013801	PIEZO ELECTRODE
24	013215	BACKNUT - 1/4" BSP
25	017607	PILOT SHROUD - FRONT
26	034130	OPEN BURNER INJECTOR Ø1.30 mm - LPG
	034210	OPEN BURNER INJECTOR Ø2.10 mm - NATURAL GAS
27	011740	JET BACKNUT
28	017613	ADAPTOR - 1/8" BSP M/F (NOT AVAILABLE, REFER TO ITEM 14, 017611)
29	017612	INJECTOR ELBOW (UP TO S/N 278399)(NOT AVAILABLE, REFER TO ITEM 14, 017611)
	026023	INJECTOR ELBOW (FROM S/N 278400)(NOT AVAILABLE, REFER TO ITEM 14, 017611)
30	017079	PILOT OUTLET FITTING
31	017614	PILOT TUBE FRONT
32	013000K	PILOT BURNER KIT (USES ITEM 19 PILOT SPUDS)
33	011741	PRESSURE ADAPTOR
34	011337	PRESSURE TEST POINT
35	019575	THERMOCOUPLE SPLIT NUT
36	017617	THERMOCOUPLE - 750 mm
	024573	THERMOCOUPLE LOCK-NUT (NOT ILLUSTRATED)
37	017615	PILOT TUBE REAR
38	017608	PILOT SHROUD - REAR
39	014801	CONTROL SUPPLY PIPE
40	011747	ELBOW - 3/8" x 1/2"
41	011656	REDUCING BUSH - 3/8" x 1/2"
42	019454	SOLENOID VALVE
43	013190	PILOT SUPPLY TUBE
44	013836	ELBOW - 1/8" X 1/4"
45	013235	NIPPLE - 1/2"
46	018350	ELBOW - 1/2"

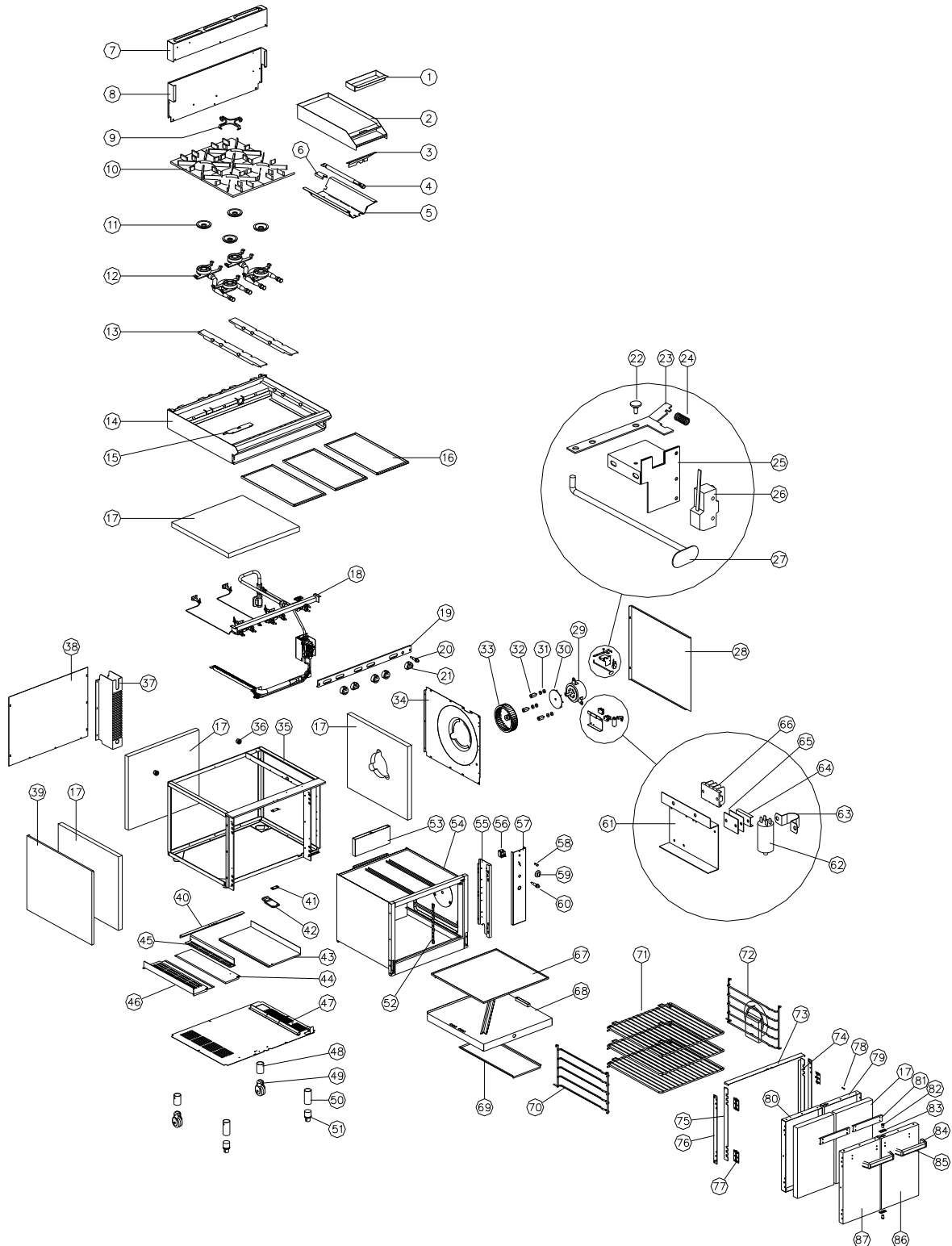
47	013153	FLAME FAILURE CONTROL
48	012250	OVEN SUPPLY TUBE
49	011742	CONNECTOR - 1/8" x 1/4"
50	013184	CLAMP BRACKET
51	011634	ELBOW - 1/8"
52	013182	SAFETY MOUNTING BRACKET
53	013183	BALL VALVE MOUNTING BRACKET
54	013155	BALL VALVE
55	012753	CONNECTOR - 1/8" x 1/4"
56	011600	ELBOW - 3/8" x 1/2"
57	011601	REDUCING BUSH - 3/8" x 1/8"
58	032150	OVEN INJECTOR Ø1.50mm - LPG
	032230	OVEN INJECTOR Ø2.30mm - NATURAL GAS
59	013263	OVEN PILOT SUPPLY TUBE
60	012248	OVEN BURNER
61	012608	PILOT BRACKET
62	018347	IGNITOR ELECTRODE - OVEN
	018252	ELECTRODE / HT LEAD ASSEMBLY (NOT ILLUSTRATED)
63	012331K	OVEN PILOT BURNER KIT (USES ITEM 19 PILOT SPUDS)
64	004154	PILOT SPACER
65	011771	THERMOCOUPLE

11. G56 / G58 PARTS DIAGRAMS

SECTION	PAGE NO.
11.1 G56 / G58 MAIN ASSEMBLY.....	68
11.1.1 Main Assembly - From S/N 224660	68
11.1.2 Main Assembly - To S/N 224659.....	72
11.2 G56 / G58 GAS PIPING ASSEMBLY (STANDARD).....	76
11.2.1 Gas Piping Assembly (Standard) - From S/N 224660	76
11.2.2 Gas Piping Assembly (Standard) - From S/N 126846 to S/N 224659	78
11.2.3 Gas Piping Assembly (Standard) - To S/N 126846.....	81
11.3 G56 / G58 GAS PIPING ASSEMBLY (FFP)	84
11.3.1 Gas Piping Assembly (FFP) - From S/N 224660	84
11.3.2 Gas Piping Assembly (FFP) - From S/N 126846 to S/N 224659	87
11.3.3 Gas Piping Assembly (FFP) - To S/N 126846	90

11.1 G56 / G58 MAIN ASSEMBLY

11.1.1 G56 / G58 Main Assembly - From S/N 224660



Pos	Part No	Description
1	016511	TROUGH TRAY
2	016387	GRIDDLE ('A' OPTION)
	016386	GRIDDLE ('B' OPTION)
	016385	GRIDDLE ('C' OPTION)
3	019424	HEAT SHIELD
4	014105	GRIDDLE BURNER
5	019431	GRIDDLE REFLECTOR
6	014106	GRIDDLE BURNER BRACKET
7	012862	SPLASHBACK G56
	012863	SPLASHBACK G58
8	012849	HOB BACK PANEL
9	016659	POT STAND SPIDER
10	004125	POT STAND
11	004078	BURNER CAP
12	004079	FRONT BURNER ASSEMBLY
	004080	REAR BURNER ASSEMBLY
13	015439	POT SUPPORT
14	012856	HOB - G56
	012858	HOB - G58
15	017609	HEAT SHIELD (-FFP UNITS ONLY)
16	004158	HOB TRAY
17	-----	INSULATION
18	-----	GAS PIPING ASSEMBLY (SEE SECTION 11.2.1 & 11.3.1)
19	004683	HOB CONTROL PANEL G56A
	004684	HOB CONTROL PANEL G56B
	004685	HOB CONTROL PANEL G56C
	004686	HOB CONTROL PANEL G56D
19	004488	HOB CONTROL PANEL G56B -FFP
	004487	HOB CONTROL PANEL G56C -FFP
	004486	HOB CONTROL PANEL G56D -FFP
	004748	HOB CONTROL PANEL G58A
	004749	HOB CONTROL PANEL G58B
	004750	HOB CONTROL PANEL G58C
	004751	HOB CONTROL PANEL G58D
19	004489	HOB CONTROL PANEL G58A -FFP
	004490	HOB CONTROL PANEL G58B -FFP
	004491	HOB CONTROL PANEL G58C -FFP
	004492	HOB CONTROL PANEL G58D -FFP
	004753	HOB CONTROL PANEL G56B LH
	004754	HOB CONTROL PANEL G56C LH
19	004507	HOB CONTROL PANEL G56B -FFP LH
	004506	HOB CONTROL PANEL G56C -FFP LH
	004755	HOB CONTROL PANEL G58B LH
	004756	HOB CONTROL PANEL G58C LH
19	004509	HOB CONTROL PANEL G58B -FFP LH
	004508	HOB CONTROL PANEL G58C -FFP LH
20	020119	PIEZO IGNITOR
21	013202	KNOB ASSEMBLY
22	003396	PIVOT PIN
23	012362	LEVER ARM
24	014397	MICROSWITCH SPRING
25	012335	MICROSWITCH BRACKET
26	017928	MICROSWITCH
27	019440	MICROSWITCH ROD
28	015045	SIDE PANEL - R.H
29	019479K	FAN MOTOR KIT (INCLUDES ITEMS 30,31)
30	010866	COOLING DISC

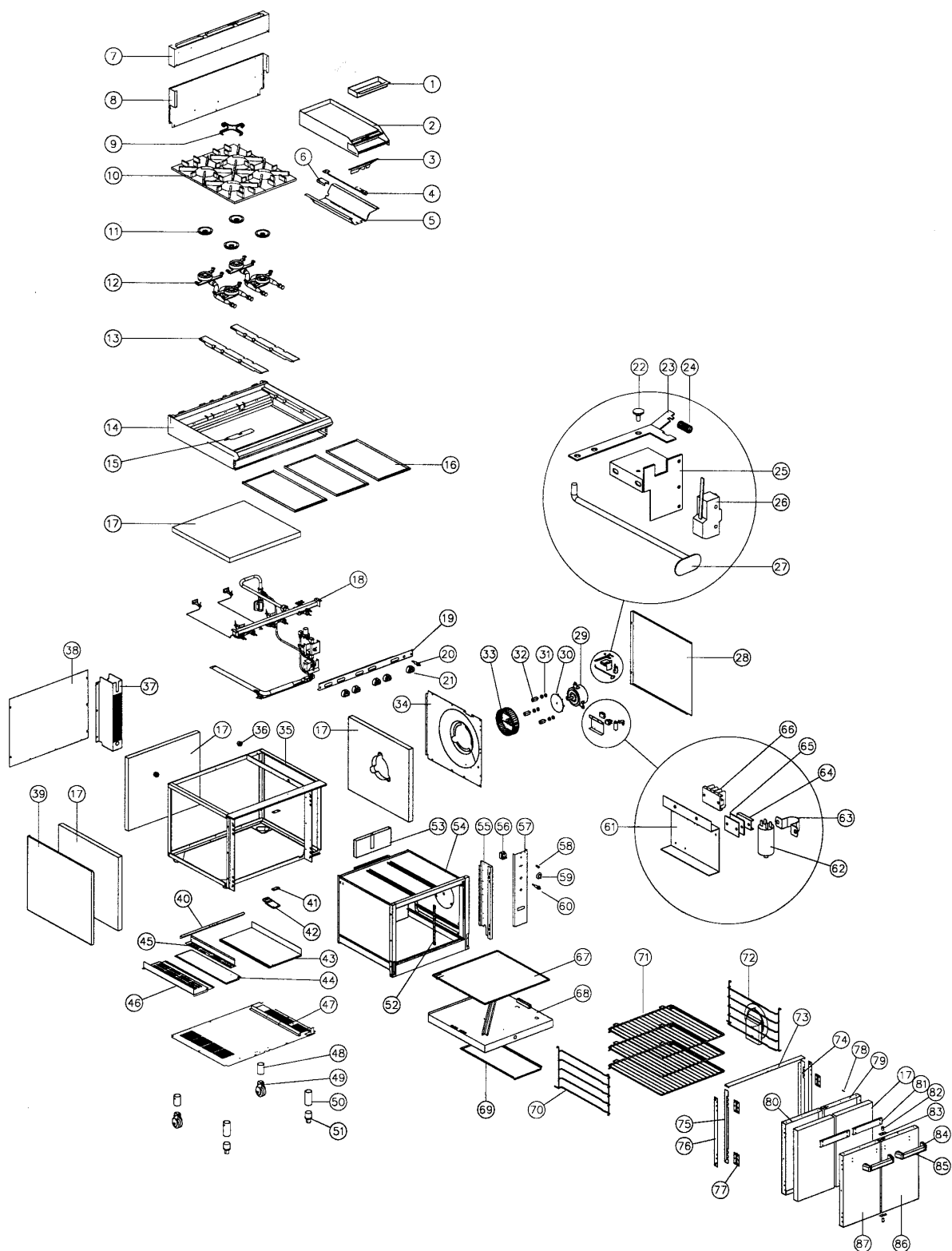
31	010859	RUBBER BUSHES
32	013627	MOUNTING SPACER
33	010856	FAN WHEEL
34	015043	SIDE INSULATION PANEL
35	004257	CHASSIS G56
	004258	CHASSIS G58
36	014157	SPACER FOOT
37	014798	GAS HOUSING
38	014804	BACK PANEL
39	013249	SIDE PANEL - LH
40	012606	BURNER SUPPORT ANGLE
41	010254	STRIKER PLATE
42	004338	STRIKER PLATE EXTENSION
43	012412	INSULATION TRAY
44	012609	BAFFLE SPACER
45	012607	BURNER SHIELD
46	012411	BOTTOM BAFFLE
47	019442	BOTTOM INSULATION PANEL
48	013661	LEG TUBE - CASTOR
	015139	CASTOR ASSEMBLY (48 & 49 ASSEMBLED)
49	012776	CASTOR ASSEMBLY
	015652	CASTOR YOKE
	011046	WHEEL - 75mm
	014854	WHEEL PIN
50	014874	LEG TUBE - ADJUSTABLE
	014872	ADJUSTABLE LEG ASSEMBLY (50 & 51 ASSEMBLED)
51	010990	ADJUSTABLE FOOT
52	017961	PIHAL GUARD
53	012233	VENT
54	004260	OVEN
55	013247	SPACER PANEL
56	011987	THERMOSTAT
57	004895	OVEN CONTROL PANEL
58	013528	PILOT LIGHT
59	015563	THERMOSTAT KNOB
60	020119	PIEZO IGNITOR
61	012077	TERMINAL BLOCK BRACKET
62	010909	CAPACITOR
63	010023	SADDLE CLAMP
64	002138	CABLE CLAMP
65	002441	CABLE INSULATOR
66	013586	TERMINAL BLOCK
67	004141	BAFFLE TRAY
68	004516	BURNER BOX
69	011509	FLAME BAFFLE
70	011514	RACK SUPPORT - LH
71	011515	OVEN RACK
72	012610	RACK SUPPORT
73	014314	OVEN TRIM - TOP
74	014356	OVEN TRIM - RH
75	014355	OVEN TRIM - LH
76	013248	HINGE PLATE
77	016406	BUTT HINGE
78	019439	DOOR MICROSWITCH PIN
79	004789	DOOR INNER - RH
80	004333	DOOR INNER - LH
81	018138	HANDLE STIFFENER
82	011005	BALL & LOCKNUT

83	018789	BALL CATCH PLATE
84	018081K	HANDLE END CAP
85	018131	DOOR HANDLE
86	013243	DOOR OUTER - R.H
	SA1451	RIGHT DOOR ASSEMBLY (WITH M/SWITCH PIN)
87	013244	DOOR OUTER - L.H
	SA1434	LEFT DOOR ASSEMBLY

GAS TYPE CONVERSION KITS - G56 and G58

Model	Serial Numbers		Country	Conversion Kit		
	From	To		→ LPG	→ Butane	→ Natural
G56 A	126846	→	Australia only	22923	Use NZ LPG kit	22933
			NZ / Other countries	26246		
	←	126845		16766 & 12448	On request	16754 & 12503
G56 B	126846	→	Australia only	22924	Use NZ LPG kit	22934
			NZ / Other countries	26247		
	←	126845		16767 & 12448	On request	16755 & 12503
G56 C	126846	→	Australia only	22925	Use NZ LPG kit	22935
			NZ / Other countries	26248		
	←	126845		16768 & 12448	On request	16756 & 12503
G56 D	126846	→	Australia only	22926	Use NZ LPG kit	22936
			NZ / Other countries	26249		
	←	126845		16769 & 12448	On request	16757 & 12503
G58 A	126846	→	Australia only	22927	Use NZ LPG kit	22937
			NZ / Other countries	26250		
	←	126845		16770 & 12448	On request	16758 & 12503
G58 B	126846	→	Australia only	22928	Use NZ LPG kit	22938
			NZ / Other countries	26251		
	←	126845		16771 & 12448	On request	16759 & 12503
G58 C	126846	→	Australia only	22929	Use NZ LPG kit	22939
			NZ / Other countries	26252		
	←	126845		16772 & 12448	On request	16760 & 12503
G58 D	126846	→	Australia only	22930	Use NZ LPG kit	22940
			NZ / Other countries	26253		
	←	126845		16773 & 12448	On request	16761 & 12503

11.1.2 G56 / G58 Main Assembly - To S/N 224659



Pos	Part No.	Description
1	016511	TROUGH TRAY
2	016387	GRIDDLE ('A' OPTION)
	016386	GRIDDLE ('B' OPTION)
	016385	GRIDDLE ('C' OPTION)
3	019424	HEAT SHIELD
4	014105	GRIDDLE BURNER
5	019431	GRIDDLE REFLECTOR
6	014106	GRIDDLE BURNER BRACKET
7	012862	SPLASHBACK G56
	012863	SPLASHBACK G58
8	012849	HOB BACK PANEL
9	016659	POT STAND SPIDER
10	004125	POT STAND
11	004078	BURNER CAP
12	004079	FRONT BURNER ASSEMBLY
	004080	REAR BURNER ASSEMBLY
13	015439	POT SUPPORT
14	012856	HOB - G56
	012858	HOB - G58
15	017609	HEAT SHIELD (-FFP UNITS ONLY)
16	004158	HOB TRAY
17	-----	INSULATION
18	-----	GAS PIPING ASSEMBLY (SEE SECTION 11.2 & 11.3)
19	004683	HOB CONTROL PANEL G56A
	004408	HOB CONTROL PANEL G56B (to S/N 125326)
	004684	HOB CONTROL PANEL G56B (from S/N 125327)
	004409	HOB CONTROL PANEL G56C (to S/N 125326)
	004685	HOB CONTROL PANEL G56C (from S/N 125327)
	004410	HOB CONTROL PANEL G56D (to S/N 125326)
	004686	HOB CONTROL PANEL G56D (from S/N 125327)
19	004488	HOB CONTROL PANEL G56B -FFP
	004487	HOB CONTROL PANEL G56C -FFP
	004486	HOB CONTROL PANEL G56D -FFP
19	004411	HOB CONTROL PANEL G58A (to S/N 125326)
	004748	HOB CONTROL PANEL G58A (from S/N 125327)
	004412	HOB CONTROL PANEL G58B (to S/N 125326)
	004749	HOB CONTROL PANEL G58B (from S/N 125327)
	004413	HOB CONTROL PANEL G58C (to S/N 125326)
	004750	HOB CONTROL PANEL G58C (from S/N 125327)
	004414	HOB CONTROL PANEL G58D (to S/N 125326)
	004751	HOB CONTROL PANEL G58D (from S/N 125327)
19	004489	HOB CONTROL PANEL G58A -FFP
	004490	HOB CONTROL PANEL G58B -FFP
	004491	HOB CONTROL PANEL G58C -FFP
	004492	HOB CONTROL PANEL G58D -FFP
19	004454	HOB CONTROL PANEL G56B LH (to S/N 125326)
	004753	HOB CONTROL PANEL G56B LH (from S/N 125327)
	004455	HOB CONTROL PANEL G56C LH (to S/N 125326)
	004754	HOB CONTROL PANEL G56C LH (from S/N 125327)
19	004507	HOB CONTROL PANEL G56B -FFP LH
	004506	HOB CONTROL PANEL G56C -FFP LH
19	004456	HOB CONTROL PANEL G58B LH (to S/N 125326)
	004755	HOB CONTROL PANEL G58B LH (from S/N 125327)
	004457	HOB CONTROL PANEL G58C LH (to S/N 125326)
	004756	HOB CONTROL PANEL G58C LH (from S/N 125327)
19	004509	HOB CONTROL PANEL G58B -FFP LH
	004508	HOB CONTROL PANEL G58C -FFP LH

20	020119	PIEZO IGNITOR
21	013202	KNOB ASSEMBLY
22	003396	PIVOT PIN
23	012362	LEVER ARM
24	014397	MICROSWITCH SPRING
25	012335	MICROSWITCH BRACKET
26	017928	MICROSWITCH
27	019440	MICROSWITCH ROD
28	015045	SIDE PANEL - R.H
29	019479K	FAN MOTOR KIT (INCLUDES ITEMS 30,31)
30	010866	COOLING DISC
31	010859	RUBBER BUSHES
32	013627	MOUNTING SPACER
33	010856	FAN WHEEL
34	015043	SIDE INSULATION PANEL
35	004257	CHASSIS G56
	004258	CHASSIS G58
36	014157	SPACER FOOT
37	014798	GAS HOUSING
38	014804	BACK PANEL
39	013249	SIDE PANEL - LH
40	012606	BURNER SUPPORT ANGLE
41	010254	STRIKER PLATE
42	004338	STRIKER PLATE EXTENSION
43	012412	INSULATION TRAY
44	012609	BAFFLE SPACER
45	012607	BURNER SHIELD
46	012411	BOTTOM BAFFLE
47	019442	BOTTOM INSULATION PANEL
48	013661	LEG TUBE - CASTOR
	015139	CASTOR ASSEMBLY (48 & 49 ASSEMBLED)
49	012776	CASTOR ASSEMBLY
	015652	CASTOR YOKE
	011046	WHEEL - 75mm
	014854	WHEEL PIN
50	014874	LEG TUBE - ADJUSTABLE
	014872	ADJUSTABLE LEG ASSEMBLY (50 & 51 ASSEMBLED)
51	010990	ADJUSTABLE FOOT
52	017961	PHIAL GUARD
53	012233	VENT
54	004260	OVEN
55	013247	SPACER PANEL
56	011987	THERMOSTAT
57	004658	OVEN CONTROL PANEL
58	013528	PILOT LIGHT
59	015563	THERMOSTAT KNOB
60	020119	PIEZO IGNITOR
61	012077	TERMINAL BLOCK BRACKET
62	010909	CAPACITOR
63	010023	SADDLE CLAMP
64	002138	CABLE CLAMP
65	002441	CABLE INSULATOR
66	013586	TERMINAL BLOCK
67	004141	BAFFLE TRAY
68	004516	BURNER BOX
69	011509	FLAME BAFFLE
70	011514	RACK SUPPORT - LH
71	011515	OVEN RACK
72	012610	RACK SUPPORT

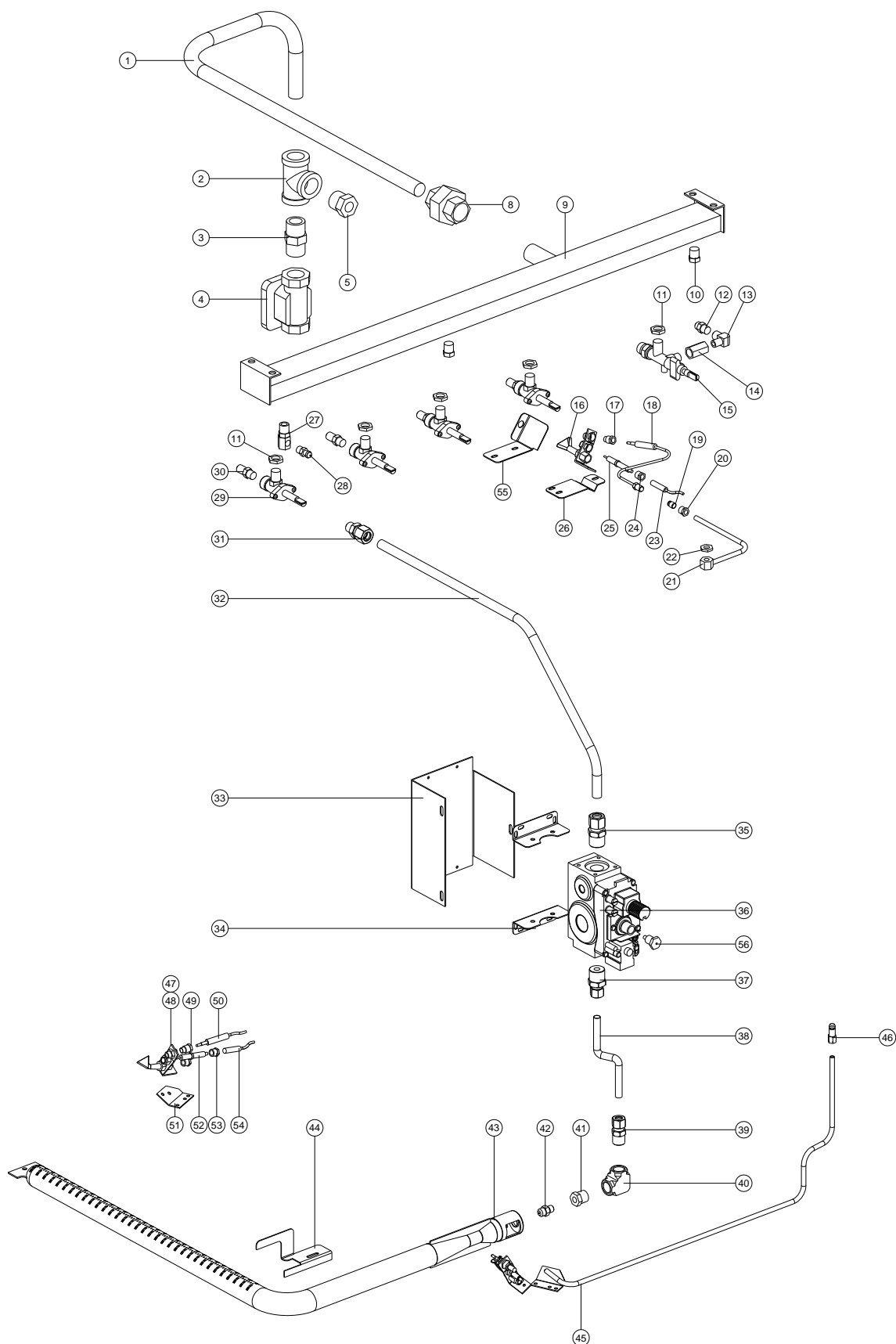
73	014314	OVEN TRIM - TOP
74	014356	OVEN TRIM - RH
75	014355	OVEN TRIM - LH
76	013248	HINGE PLATE
77	016406	BUTT HINGE
78	019439	DOOR MICROSWITCH PIN
79	004789	DOOR INNER - RH
80	004333	DOOR INNER - LH
81	018138	HANDLE STIFFENER
82	011005	BALL & LOCKNUT
83	018789	BALL CATCH PLATE
84	018081K	HANDLE END CAP
85	018131	DOOR HANDLE
86	013243	DOOR OUTER - R.H
	SA1451	RIGHT DOOR ASSEMBLY (WITH M/SWITCH PIN)
87	013244	DOOR OUTER - L.H
	SA1434	LEFT DOOR ASSEMBLY

GAS TYPE CONVERSION KITS - G56 and G58

Model	Serial Numbers		Country	Conversion Kit		
	From	To		→ LPG	→ Butane	→ Natural
G56 A	126846	→	Australia only	22923	Use NZ LPG kit	22933
			NZ / Other countries	26246		
	←	126845		16766 & 12448	On request	16754 & 12503
G56 B	126846	→	Australia only	22924	Use NZ LPG kit	22934
			NZ / Other countries	26247		
	←	126845		16767 & 12448	On request	16755 & 12503
G56 C	126846	→	Australia only	22925	Use NZ LPG kit	22935
			NZ / Other countries	26248		
	←	126845		16768 & 12448	On request	16756 & 12503
G56 D	126846	→	Australia only	22926	Use NZ LPG kit	22936
			NZ / Other countries	26249		
	←	126845		16769 & 12448	On request	16757 & 12503
G58 A	126846	→	Australia only	22927	Use NZ LPG kit	22937
			NZ / Other countries	26250		
	←	126845		16770 & 12448	On request	16758 & 12503
G58 B	126846	→	Australia only	22928	Use NZ LPG kit	22938
			NZ / Other countries	26251		
	←	126845		16771 & 12448	On request	16759 & 12503
G58 C	126846	→	Australia only	22929	Use NZ LPG kit	22939
			NZ / Other countries	26252		
	←	126845		16772 & 12448	On request	16760 & 12503
G58 D	126846	→	Australia only	22930	Use NZ LPG kit	22940
			NZ / Other countries	26253		
	←	126845		16773 & 12448	On request	16761 & 12503

11.2 G56 / G58 GAS PIPING ASSEMBLY (STD)

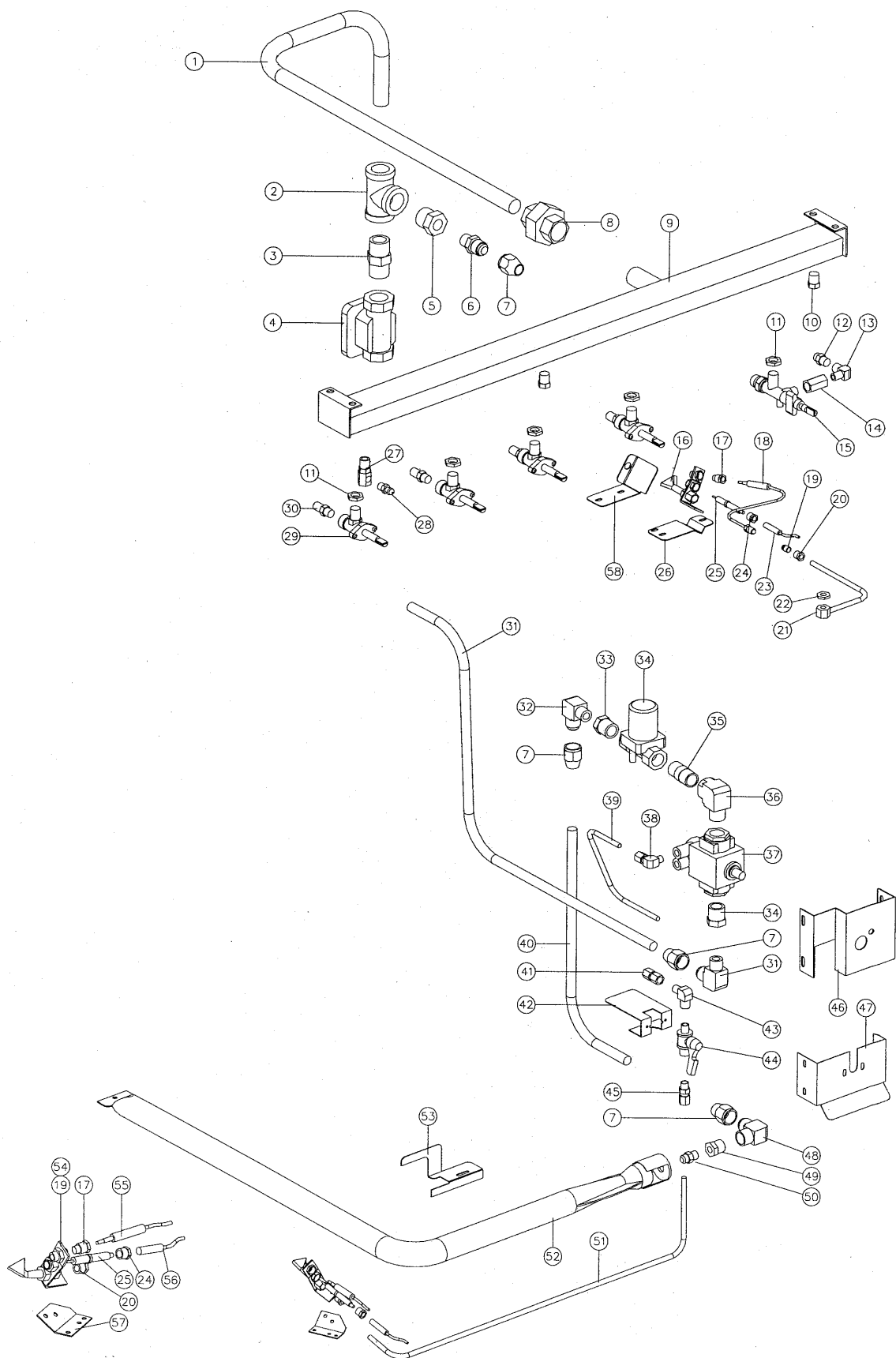
11.2.1 G56 / G58 Gas Piping Assembly (Std) - From S/N 224660



Pos	Part No	Description
1	014803	HOB SUPPLY PIPE
2	011833	TEE - 3/4"
3	013473	NIPPLE
4	011853	REGULATOR (NATURAL GAS ONLY)
5	012048	REDUCING BUSH - 3/8" x 3/4"
8	011827	MACK UNION
9	004147	MANIFOLD G56
	004148	MANIFOLD G58
10	011148	PLUG - 1/4"
11	013215	BACKNUT - 1/4" BSP
12	032130	GRIDDLE INJECTOR Ø1.30 mm - LPG
	032210	GRIDDLE INJECTOR Ø2.10 mm - NATURAL GAS
13	011634	PILOT ELBOW (UP TO S/N 278399) (NOT AVAILABLE REFER ITEM 15, 016518)
	026022	PILOT ELBOW (FROM S/N 278400) (NOT AVAILABLE REFER ITEM 15, 016518)
14	012918	OUTLET CONNECTOR (NOT AVAILABLE REFER ITEM 15, 016518)
15	016518	GRIDDLE TAP ASSEMBLY (INCLUDES ITEMS 11,13,14,22)
16	019215K	GRIDDLE PILOT BURNER KIT (INCLUDES ITEMS 17,19,20,24,25)
17	018741	CLAMP NUT
18	019428	THERMOCOUPLE - GRIDDLE
	019575	M10 THERMOCOUPLE SPLIT NUT
19	018692	PILOT INJECTOR Ø0.20mm - LP GAS
	018693	PILOT INJECTOR Ø0.32mm - NATURAL GAS
20	018740	COMPRESSION NUT 1/4"
	018739	OLIVE
21	020656	GRIDDLE PILOT SUPPLY TUBE
22	012919	BACKNUT
23	018095	HIGH TENSION LEAD
24	018742	ELECTRODE NUT
25	018744	PILOT ELECTRODE
26	019425	GRIDDLE PILOT BRACKET
27	011741	PRESSURE ADAPTOR
28	019371	PRESSURE TEST POINT
29	020639	GAS TAP
30	034130	OPEN BURNER INJECTOR Ø1.30 mm - LPG
	034210	OPEN BURNER INJECTOR Ø2.10 mm - NATURAL GAS
31	013837	CONNECTOR
32	024136	CONTROL SUPPLY PIPE
33	024133	CONTROL MOUNTING BRACKET
34	020064	GAS VALVE BRACKET
35	014408	CONNECTOR
36	020103K	GAS CONTROL KIT (INCLUDES ITEM 56)
37	022689	INJECTOR CONNECTOR
38	022686	1/4" SS FLEXI PIPE
39	021288	CONNECTOR
40	024142	ELBOW – 3/8" BSP FF
41	011601	REDUCING BUSH
42	032150	OVEN INJECTOR Ø1.50mm - LPG
	032250	OVEN INJECTOR Ø2.50mm - NATURAL GAS
43	012248	OVEN BURNER
44	022248	BURNER RETAINING BRACKET
45	024137	PILOT SUPPLY TUBE
46	012753	CONNECTOR – 1/8" x 1/4"
47	018691K	OVEN PILOT BURNER KIT (INCLUDES ITEMS 20,48,49,52,53)
48	018692	PILOT INJECTOR Ø0.20mm - LPG
	018693	PILOT INJECTOR Ø0.32mm - NATURAL GAS
49	018741	CLAMP NUT

50	019429	THERMOCOUPLE – 850mm
51	024267	OVEN PILOT BRACKET
52	018744	PILOT ELECTRODE
53	018742	ELECTRODE NUT
54	019407	HIGH TENSION LEAD
55	023863	GRIDDLE PILOT DRAFT BAFFLE
56	018096	REGULATOR KNOCK-OUT PIN (ALL GASES)

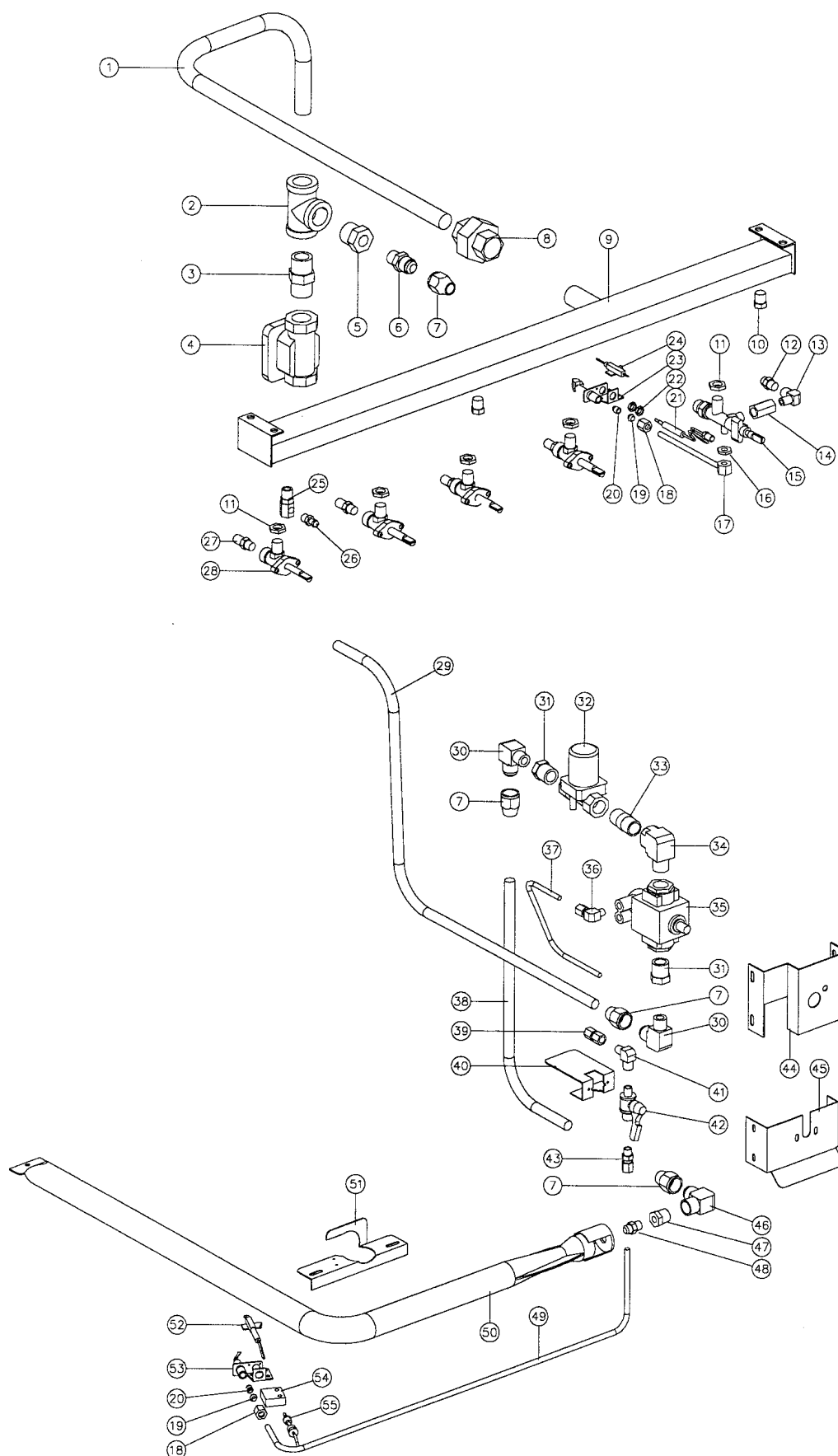
11.2.2 G56 / G58 Gas Piping Assembly (Std) - From S/N 126846 to 224659



Pos	Part No	Description
1	014803	HOB SUPPLY PIPE
2	011833	TEE - 3/4"
3	013473	NIPPLE
4	011853	REGULATOR (NATURAL GAS ONLY)
5	012048	REDUCING BUSH - 3/8" x 3/4"
6	011003	CONNECTOR - 1/2" x 3/8"
7	011002	CONE NUT
8	011827	MACK UNION
9	004147	MANIFOLD G56
	004148	MANIFOLD G58
10	011148	PLUG - 1/4"
11	013215	BACKNUT - 1/4" BSP
12	032130	GRIDDLE INJECTOR Ø1.30 mm - LPG
	032210	GRIDDLE INJECTOR Ø2.10 mm - NATURAL GAS
13	011634	PILOT ELBOW (UP TO S/N 278399) (NOT AVAILABLE REFER ITEM 15, 016518)
	026022	PILOT ELBOW (FROM S/N 278400) (NOT AVAILABLE REFER ITEM 15, 016518)
14	012918	OUTLET CONNECTOR (NOT AVAILABLE REFER ITEM 15, 016518)
15	016518	GRIDDLE TAP ASSEMBLY (INCLUDES ITEMS 11,13,14,22)
16	019215K	GRIDDLE PILOT BURNER KIT (INCLUDES ITEMS 17,19,20,24,25)
17	018741	CLAMP NUT
18	019428	THERMOCOUPLE - GRIDDLE
	019575	M10 THERMOCOUPLE SPLIT NUT
19	018692	PILOT INJECTOR Ø0.20mm - LP GAS
	018693	PILOT INJECTOR Ø0.32mm - NATURAL GAS
20	018740	COMPRESSION NUT 1/4"
	018739	OLIVE
21	020656	GRIDDLE PILOT SUPPLY TUBE
22	012919	BACKNUT
23	018095	HIGH TENSION LEAD
24	018742	ELECTRODE NUT
25	018744	PILOT ELECTRODE
26	019425	GRIDDLE PILOT BRACKET
27	011741	PRESSURE ADAPTOR
28	019371	PRESSURE TEST POINT
29	020639	GAS TAP
30	034130	OPEN BURNER INJECTOR Ø1.30 mm - LPG
	034210	OPEN BURNER INJECTOR Ø2.10 mm - NATURAL GAS
31	014801	CONTROL SUPPLY PIPE
32	011747	ELBOW - 3/8" x 1/2"
33	011656	REDUCING BUSH - 3/8" x 1/2"
34	019454	SOLENOID VALVE
35	013235	NIPPLE - 1/2"
36	018350	ELBOW - 1/2"
37	013153	FLAME FAILURE CONTROL
38	013836	ELBOW - 1/8" X 1/4"
39	013190	PILOT SUPPLY TUBE
40	012250	OVEN SUPPLY TUBE
41	011742	CONNECTOR - 1/8" x 1/4"
42	013184	CLAMP BRACKET
43	011634	ELBOW - 1/8"
44	013155	BALL VALVE
45	012753	CONNECTOR - 1/8" x 1/4"
46	013182	SAFETY MOUNTING BRACKET
47	013183	BALL VALVE MOUNTING BRACKET
48	011600	ELBOW - 3/8" x 1/2"

49	011601	REDUCING BUSH - 3/8" x 1/8"
50	032150	OVEN INJECTOR Ø1.50mm - LPG
	032230	OVEN INJECTOR Ø2.30mm - NATURAL GAS
51	019445	OVEN PILOT SUPPLY TUBE
52	012248	OVEN BURNER
53	022248	BURNER RETAINING BRACKET
54	018691K	OVEN PILOT BURNER KIT (INCLUDES ITEMS 17,19,20,24,25)
55	020253	THERMOCOUPLE- 1200mm
56	019407	HIGH TENSION LEAD
57	019330	OVEN PILOT BRACKET
58	023863	GRIDDLE PILOT DRAFT BAFFLE (FROM S/N 215176)

11.2.3 G56 / G58 Gas Piping Assembly (Std) - To S/N 126846

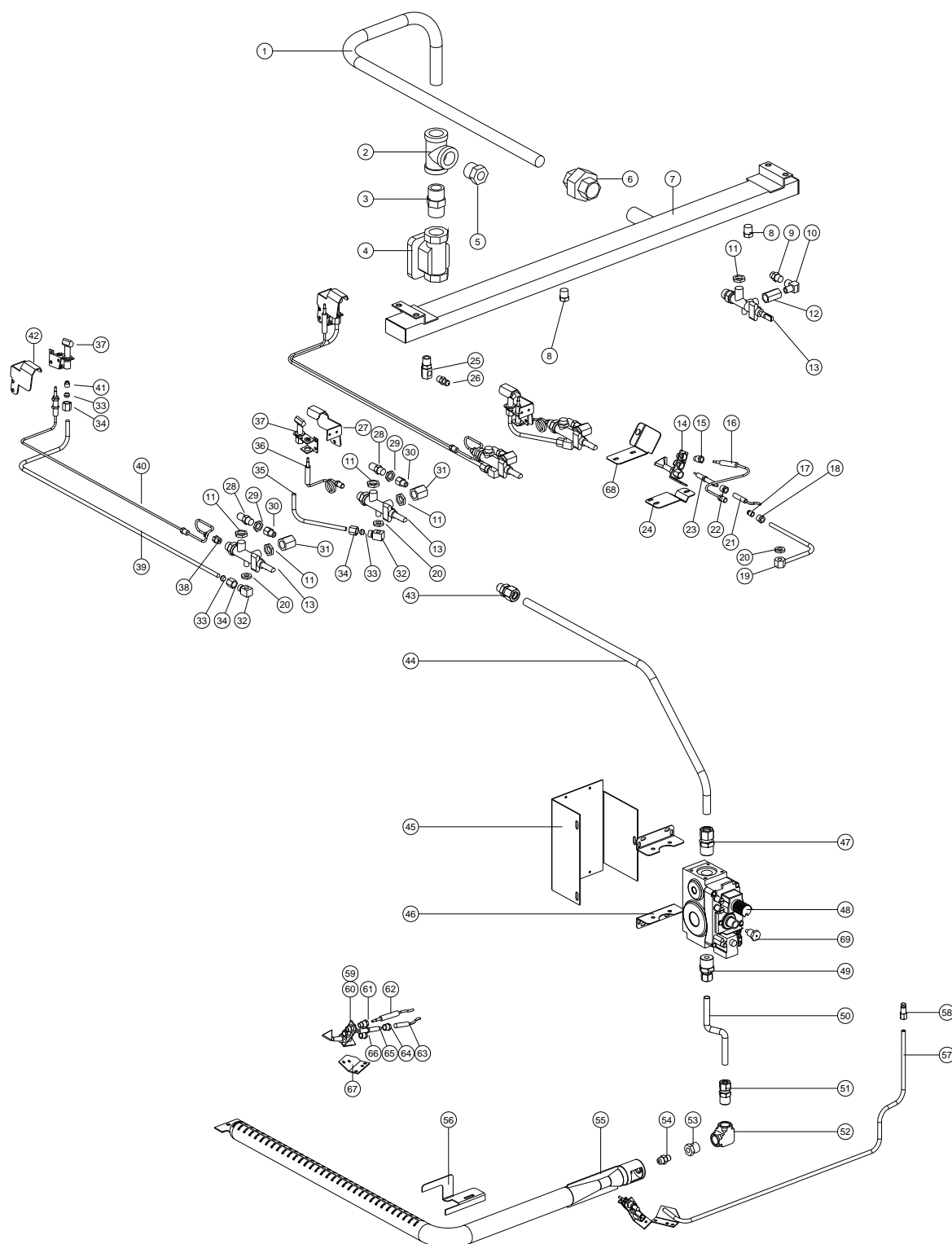


Pos	Part No	Description
1	014803	HOB SUPPLY PIPE
2	011833	TEE - 3/4"
3	013473	NIPPLE
4	011853	REGULATOR (NATURAL GAS ONLY)
5	012048	REDUCING BUSH - 3/8" x 3/4"
6	011003	CONNECTOR - 1/2" x 3/8"
7	011002	CONE NUT
8	011827	MACK UNION
9	004147	MANIFOLD G50
	004148	MANIFOLD G50-8
10	011148	PLUG - 1/4"
11	013215	BACKNUT - 1/4" BSP
12	032130	GRIDDLE INJECTOR Ø1.30 mm - LPG
	032210	GRIDDLE INJECTOR Ø2.10 mm - NATURAL GAS
13	011634	PILOT ELBOW (UP TO S/N 278399) (NOT AVAILABLE REFER ITEM 15, 016518)
	026022	PILOT ELBOW (FROM S/N 278400) (NOT AVAILABLE REFER ITEM 15, 016518)
14	012918	OUTLET CONNECTOR (NOT AVAILABLE REFER ITEM 15, 016518)
15	016518	GRIDDLE TAP ASSY (ASSEMBLED WITH ITEMS 11,13,14,16)
16	012919	BACKNUT- 5/16" UNF
17	012921	PILOT TUBE ASSEMBLY
18	011287	NUT (PART OF ITEM 23)
19	011286	OLIVE (PART OF ITEM 23)
20	011650	PILOT SPUD - LPG
	011651	PILOT SPUD - NATURAL
21	012916	THERMOCOUPLE - 300 mm
22	-----	THERMOCOUPLE NUTS (PART OF ITEM 21)
23	012699K	GRIDDLE PILOT BURNER KIT (ASSEMBLED WITH ITEMS 18,19,20)
24	013801	PIEZO ELECTRODE
25	011741	PRESSURE ADAPTOR
26	011337	PRESSURE TEST POINT
27	034130	OPEN BURNER INJECTOR Ø1.30 mm - LPG
	034210	OPEN BURNER INJECTOR Ø2.10 mm - NATURAL GAS
28	020639	GAS TAP (FROM S/N 125327)
	011154	GAS TAP (TO S/N 125326)
29	014801	CONTROL SUPPLY PIPE
30	011747	ELBOW - 3/8" x 1/2"
31	011656	REDUCING BUSH - 3/8" x 1/2"
32	019454	SOLENOID VALVE
33	013235	NIPPLE - 1/2"
34	018350	ELBOW - 1/2"
35	013153	FLAME FAILURE CONTROL
36	013836	ELBOW - 1/8" X 1/4"
37	013190	PILOT SUPPLY TUBE
38	012250	OVEN SUPPLY TUBE
39	011742	CONNECTOR - 1/8" x 1/4"
40	013184	CLAMP BRACKET
41	011634	ELBOW - 1/8"
42	013155	BALL VALVE
43	012753	CONNECTOR - 1/8" x 1/4"
44	013182	SAFETY MOUNTING BRACKET
45	013183	BALL VALVE MOUNTING BRACKET
46	011600	ELBOW - 3/8" x 1/2"
47	011601	REDUCING BUSH - 3/8" x 1/8"
48	032150	OVEN INJECTOR Ø1.50mm - LPG
	032230	OVEN INJECTOR Ø2.30mm - NATURAL GAS
49	013263	OVEN PILOT SUPPLY TUBE

50	012248	OVEN BURNER
51	012608	PILOT BRACKET
52	018347	IGNITION ELECTRODE - OVEN
	018252	ELECTRODE / HT LEAD ASSEMBLY (NOT ILLUSTRATED)
53	012331K	OVEN PILOT BURNER KIT (INCLUDES ITEM 20)
	011650	PILOT SPUD - LPG
	011651	PILOT SPUD - NATURAL
54	004154	PILOT SPACER
55	011771	THERMOCOUPLE

11.3 G56 / G58 GAS PIPING ASSEMBLY (FFP)

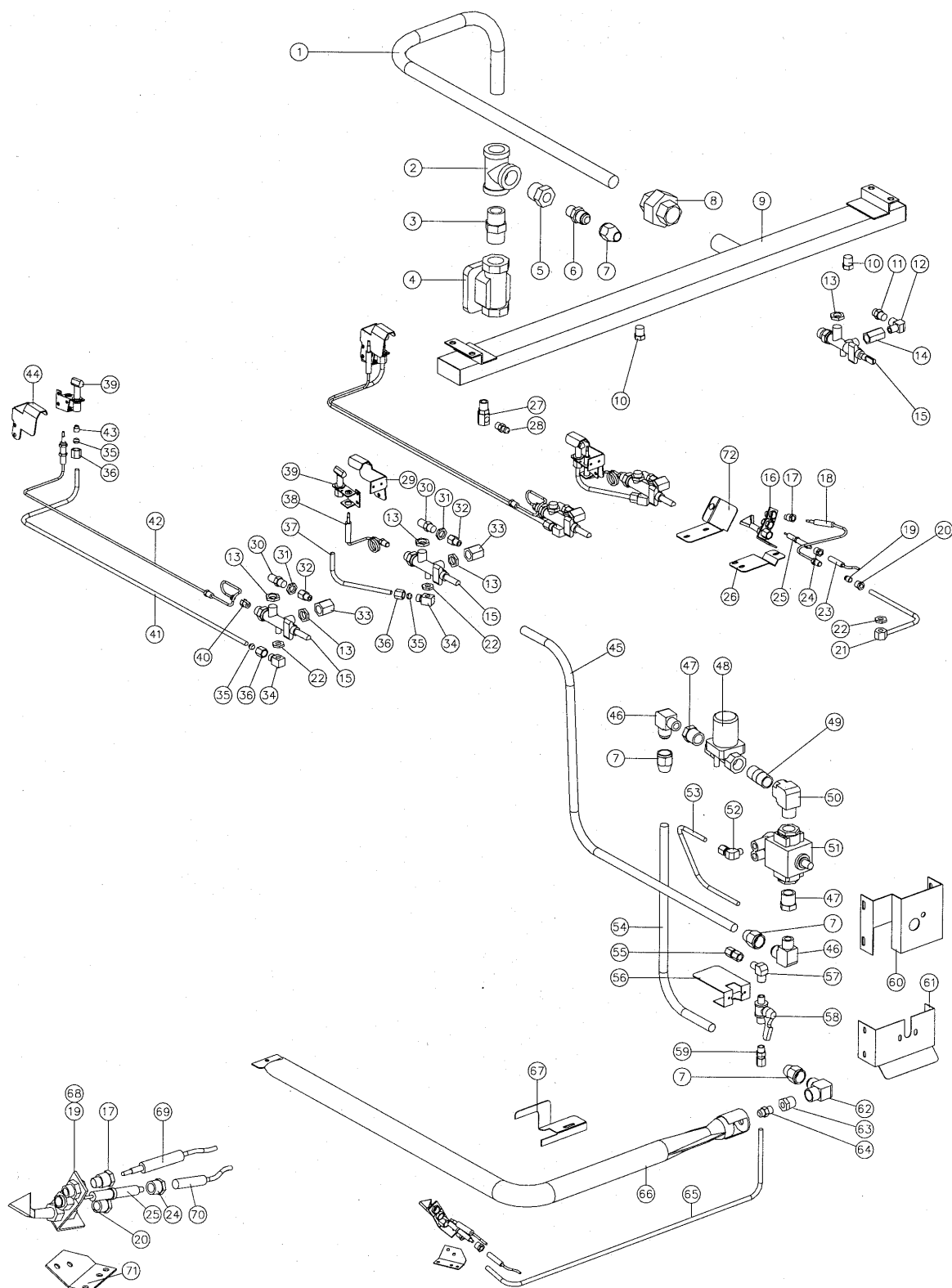
11.3.1 G56 / G58 Gas Piping Assembly (FFP) - From S/N 224660



Pos	Part No	Description
1	014803	HOB SUPPLY PIPE
2	011833	TEE - 3/4"
3	013473	NIPPLE
4	011853	REGULATOR (NATURAL GAS ONLY)
5	012048	REDUCING BUSH - 3/8" x 3/4"
6	011827	MACK UNION
7	004147	MANIFOLD G56
	004148	MANIFOLD G58
8	011148	PLUG - 1/4"
9	013215	BACKNUT - 1/4" BSP
10	032130	GRIDDLE INJECTOR Ø1.30 mm - LPG
	032210	GRIDDLE INJECTOR Ø2.10 mm - NATURAL GAS
11	011634	PILOT ELBOW (UP TO S/N 278399) (NOT AVAILABLE REFER ITEM 13, 016518)
	026022	PILOT ELBOW (FROM S/N 278400) (NOT AVAILABLE REFER ITEM 13, 016518)
12	012918	OUTLET CONNECTOR (NOT AVAILABLE REFER ITEM 13, 016518)
13	016518	GRIDDLE TAP ASSEMBLY (INCLUDES ITEMS 9,11,12,20)
	017611	OPEN BURNER TAP ASSEMBLY (INCLUDES ITEMS 9,20,31)
14	019215K	GRIDDLE PILOT BURNER KIT (INCLUDES ITEMS 15,17,18,22,23)
15	018741	CLAMP NUT
16	019428	THERMOCOUPLE - GRIDDLE
	019575	M10 THERMOCOUPLE SPLIT NUT
17	018692	PILOT INJECTOR Ø0.20mm - LP GAS
	018693	PILOT INJECTOR Ø0.32mm - NATURAL GAS
18	018740	COMPRESSION NUT 1/4"
	018739	OLIVE
19	020656	GRIDDLE PILOT SUPPLY TUBE
20	012919	BACKNUT
21	018095	HIGH TENSION LEAD
22	018742	ELECTRODE NUT
23	018744	PILOT ELECTRODE
24	019425	GRIDDLE PILOT BRACKET
25	011741	PRESSURE ADAPTOR
26	019371	PRESSURE TEST POINT
27	017607	PILOT SHROUD - FRONT
28	034130	OPEN BURNER INJECTOR Ø1.30 mm - LPG
	034210	OPEN BURNER INJECTOR Ø2.10 mm - NATURAL GAS
29	011740	JET BACKNUT (UP TO S/N 246144)
30	017613	ADAPTOR - 1/8" BSP M/F (NOT AVAILABLE REFER ITEM 13, 017611)
31	017612	INJECTOR ELBOW (UP TO S/N 278399) (NOT AVAILABLE, REFER TO ITEM 13, 017611)
	026023	INJECTOR ELBOW (FROM S/N 278400) (NOT AVAILABLE, REFER TO ITEM 13, 017611)
32	017079	PILOT OUTLET FITTING
33	011286	OLIVE
34	011287	NUT
35	017614	PILOT TUBE FRONT
36	012916	THERMOCOUPLE - 300 mm
	024573	THERMOCOUPLE LOCK-NUT (NOT ILLUSTRATED)
37	013000K	PILOT BURNER KIT (INCLUDES ITEM 41)
38	019575	THERMOCOUPLE SPLIT NUT
39	017615	PILOT TUBE REAR
40	017617	THERMOCOUPLE - 750 mm
	024573	THERMOCOUPLE LOCK-NUT (NOT ILLUSTRATED)
41	011650	PILOT SPUD - LPG
	011651	PILOT SPUD - NATURAL

42	017608	PILOT SHROUD - REAR
43	013837	CONNECTOR
44	024136	CONTROL SUPPLY PIPE
45	024133	CONTROL MOUNTING BRACKET
46	020064	GAS VALVE BRACKET
47	014408	CONNECTOR
48	020103K	GAS CONTROL KIT (INCLUDE ITEM 69)
49	022689	INJECTOR CONNECTOR
50	022686	¼" SS FLEXI PIPE
51	021288	CONNECTOR
52	024142	ELBOW – 3/8" BSP FF
53	011601	REDUCING BUSH
54	032150	OVEN INJECTOR Ø1.50mm - LPG
	032250	OVEN INJECTOR Ø2.50mm - NATURAL GAS
55	012248	OVEN BURNER
56	022248	BURNER RETAINING BRACKET
57	024137	PILOT SUPPLY TUBE
58	012753	CONNECTOR – 1/8" x 1/4"
59	018691K	OVEN PILOT BURNER KIT (INCLUDES ITEMS 60,61,64,65,66)
60	018692	PILOT INJECTOR Ø0.20mm - LPG
	018693	PILOT INJECTOR Ø0.32mm - NATURAL GAS
61	018741	CLAMP NUT
62	019429	THERMOCOUPLE – 850mm
63	019407	HIGH TENSION LEAD
64	018742	ELECTRODE NUT
65	018744	PILOT ELECTRODE
66	018740	COMPRESSION NUT ¼"
	018739	OLIVE
67	024267	OVEN PILOT BRACKET
68	023863	GRIDDLE PILOT DRAFT BAFFLE
69	018096	REGULATOR KNOCK-OUT PIN (ALL GASES)

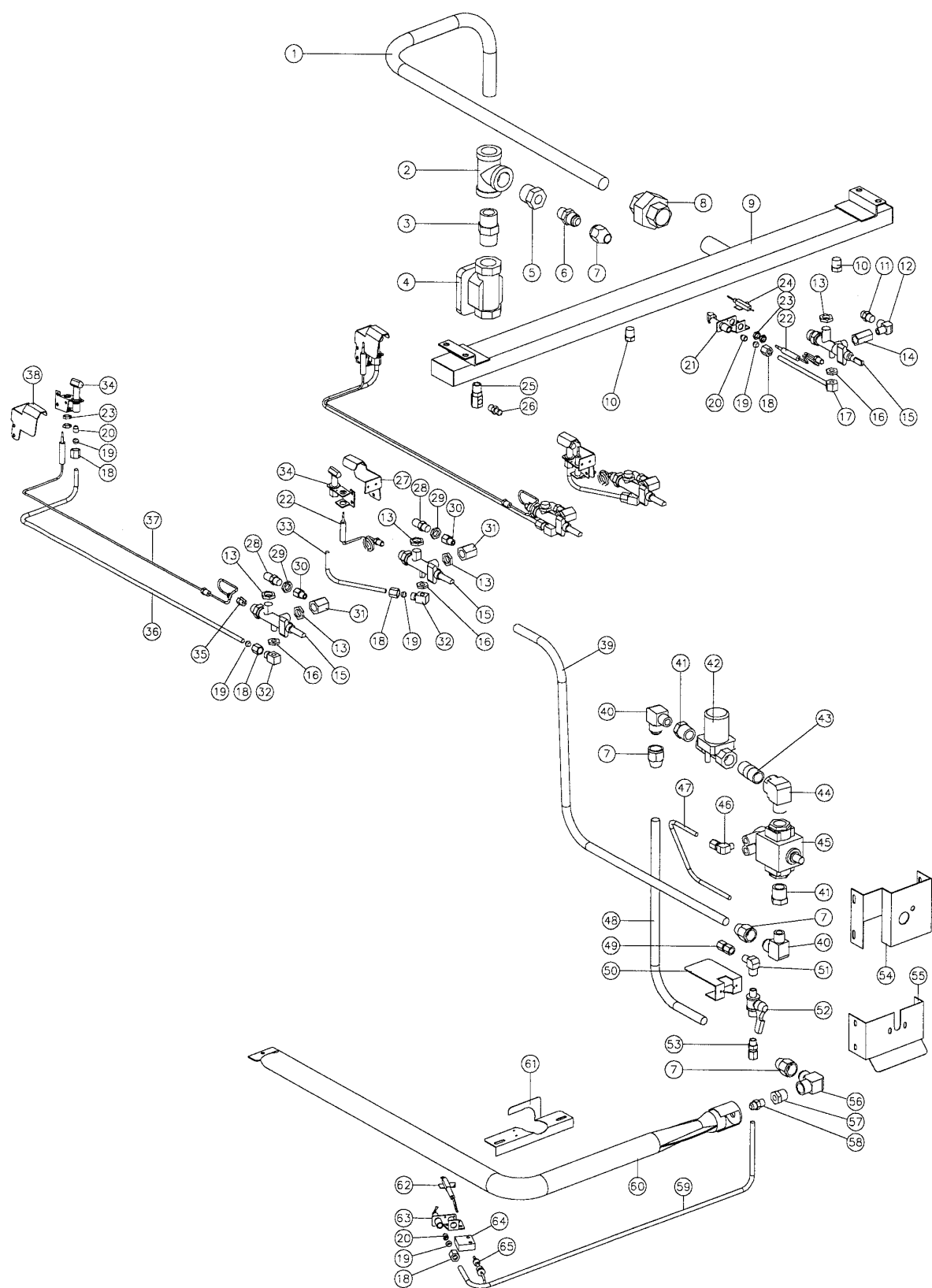
11.3.2 G56 / G58 Gas Piping Assembly (FFP) - From S/N 126846 to 224659



Pos	Part No	Description
1	014803	HOB SUPPLY PIPE
2	011833	TEE - 3/4"
3	013473	NIPPLE
4	011853	REGULATOR (NATURAL GAS ONLY)
5	012048	REDUCING BUSH - 3/8" x 3/4"
6	011003	CONNECTOR - 1/2" x 3/8"
7	011002	CONE NUT
8	011827	MACK UNION
9	004147	MANIFOLD G56
	004148	MANIFOLD G58
10	011148	PLUG - 1/4"
11	013215	BACKNUT - 1/4" BSP
12	032130	GRIDDLE INJECTOR Ø1.30 mm - LPG
	032210	GRIDDLE INJECTOR Ø2.10 mm - NATURAL GAS
13	011634	PILOT ELBOW (UP TO S/N 278399) (NOT AVAILABLE REFER ITEM 15, 016518)
	026022	PILOT ELBOW (FROM S/N 278400) (NOT AVAILABLE REFER ITEM 15, 016518)
14	012918	OUTLET CONNECTOR (NOT AVAILABLE REFER ITEM 15, 016518)
15	016518	GRIDDLE TAP ASSEMBLY (INCLUDES ITEMS 11,13,14,22)
	017611	OPEN BURNER TAP ASSEMBLY (INCLUDES ITEMS 11,22,33)
16	019215K	GRIDDLE PILOT BURNER KIT (INCLUDES ITEMS 17,19,20,24,25)
17	018741	CLAMP NUT
18	019428	THERMOCOUPLE - GRIDDLE
	019575	M10 THERMOCOUPLE SPLIT NUT
19	018692	PILOT INJECTOR Ø0.20mm - LP GAS
	018693	PILOT INJECTOR Ø0.32mm - NATURAL GAS
20	018740	COMPRESSION NUT 1/4"
	018739	OLIVE
21	020656	GRIDDLE PILOT SUPPLY TUBE
22	012919	BACKNUT
23	018095	HIGH TENSION LEAD
24	018742	ELECTRODE NUT
25	018744	PILOT ELECTRODE
26	019425	GRIDDLE PILOT BRACKET
27	011741	PRESSURE ADAPTOR
28	019371	PRESSURE TEST POINT
29	017607	PILOT SHROUD - FRONT
30	034130	OPEN BURNER INJECTOR Ø1.30 mm - LPG
	034210	OPEN BURNER INJECTOR Ø2.10 mm - NATURAL GAS
31	011740	JET BACKNUT
32	017613	ADAPTOR - 1/8" BSP M/F (NOT AVAILABLE REFER ITEM 15, 017611)
33	017612	INJECTOR ELBOW (UP TO S/N 278399) (NOT AVAILABLE, REFER TO ITEM 15, 017611)
	026023	INJECTOR ELBOW (FROM S/N 278400) (NOT AVAILABLE, REFER TO ITEM 15, 017611)
34	017079	PILOT OUTLET FITTING
35	011286	OLIVE
36	011287	NUT
37	017614	PILOT TUBE FRONT
38	012916	THERMOCOUPLE - 300 mm
	024573	THERMOCOUPLE LOCK-NUT (NOT ILLUSTRATED)
39	013000K	PILOT BURNER KIT (INCLUDE ITEM 43)
40	019575	THERMOCOUPLE SPLIT NUT
41	017615	PILOT TUBE REAR
42	017617	THERMOCOUPLE - 750 mm
	024573	THERMOCOUPLE LOCK-NUT (NOT ILLUSTRATED)

43	011650	PILOT SPUD - LPG
	011651	PILOT SPUD - NATURAL
44	017608	PILOT SHROUD - REAR
45	014801	CONTROL SUPPLY PIPE
46	011747	ELBOW - 3/8" x 1/2"
47	011656	REDUCING BUSH - 3/8" x 1/2"
48	019454	SOLENOID VALVE
49	013235	NIPPLE - 1/2"
50	018350	ELBOW - 1/2"
51	013153	FLAME FAILURE CONTROL
52	013836	ELBOW - 1/8" X 1/4"
53	013190	PILOT SUPPLY TUBE
54	012250	OVEN SUPPLY TUBE
55	011742	CONNECTOR - 1/8" x 1/4"
56	013184	CLAMP BRACKET
57	011634	ELBOW - 1/8"
58	013155	BALL VALVE
59	012753	CONNECTOR - 1/8" x 1/4"
60	013182	SAFETY MOUNTING BRACKET
61	013183	BALL VALVE MOUNTING BRACKET
62	011600	ELBOW - 3/8" x 1/2"
63	011601	REDUCING BUSH - 3/8" x 1/8"
64	032150	OVEN INJECTOR Ø1.50mm - LPG
	032230	OVEN INJECTOR Ø2.30mm - NATURAL GAS
65	019445	OVEN PILOT SUPPLY TUBE
66	012248	OVEN BURNER
67	022248	BURNER RETAINING BRACKET
68	018691K	OVEN PILOT BURNER KIT (INCLUDES ITEMS 17,19,20,24,25)
69	020253	THERMOCOUPLE- 1200mm
70	019407	HIGH TENSION LEAD
71	019330	OVEN PILOT BRACKET
72	023863	GRIDDLE PILOT DRAFT BAFFLE (FROM S/N 215176)

11.3.3 G56 / G58 Gas Piping Assembly (FFP) - To S/N 126846



Pos	Part No	Description
1	014803	HOB SUPPLY PIPE
2	011833	TEE - 3/4"
3	013473	NIPPLE
4	011853	REGULATOR (NATURAL GAS ONLY)
5	012048	REDUCING BUSH - 3/8" x 3/4"
6	011003	CONNECTOR - 1/2" x 3/8"
7	011002	CONE NUT
8	011827	MACK UNION
9	004480	MANIFOLD G56
	004481	MANIFOLD G58
10	011148	PLUG - 1/4"
11	032130	GRIDDLE INJECTOR Ø1.30 mm - LPG
	032210	GRIDDLE INJECTOR Ø2.10 mm - NATURAL GAS
12	011634	PILOT ELBOW (UP TO S/N 278399) (NOT AVAILABLE REFER ITEM 15, 016518)
	026022	PILOT ELBOW (FROM S/N 278400) (NOT AVAILABLE REFER ITEM 15, 016518)
13	013215	BACKNUT - 1/4" BSP
14	012918	OUTLET CONNECTOR (NOT AVAILABLE REFER ITEM 15, 016518)
15	016518	GRIDDLE TAP ASSY (ASSEMBLED WITH ITEMS 12,13,14,16)
	017611	OPEN BURNER GAS CONTROL ASSY (INCLUDES ITEMS 13,16,31)
16	012919	BACKNUT- 5/16" UNF
17	012921	PILOT TUBE ASSEMBLY
18	011287	NUT (PART OF ITEM 21,63)
19	011286	OLIVE (PART OF ITEM 21,63)
20	011650	PILOT SPUD - LPG
	011651	PILOT SPUD - NATURAL
21	012699K	GRIDDLE PILOT BURNER KIT (ASSEMBLED WITH ITEMS 18,19,20)
22	012916	THERMOCOUPLE - 300 mm
23	024573	THERMOCOUPLE LOCK-NUT
24	013801	PIEZO ELECTRODE
25	011741	PRESSURE ADAPTOR
26	011337	PRESSURE TEST POINT
27	017607	PILOT SHROUD - FRONT
28	034130	OPEN BURNER INJECTOR Ø1.30 mm - LPG
	034210	OPEN BURNER INJECTOR Ø2.10 mm - NATURAL GAS
29	011740	JET BACKNUT
30	017613	ADAPTOR - 1/8" BSP M/F (NOT AVAILABLE REFER ITEM 15, 017611)
31	017612	INJECTOR ELBOW (UP TO S/N 278399)(NOT AVAILABLE, REFER TO ITEM 15, 017611)
	026023	INJECTOR ELBOW (FROM S/N 278400)(NOT AVAILABLE, REFER TO ITEM 15, 017611)
32	017079	PILOT OUTLET FITTING
33	017614	PILOT TUBE FRONT
34	013000K	PILOT BURNER KIT (USES ITEM 20 PILOT SPUDS)
35	019575	THERMOCOUPLE SPLIT NUT
36	017615	PILOT TUBE REAR
37	017617	THERMOCOUPLE - 750 mm
	024573	THERMOCOUPLE LOCK-NUT (NOT ILLUSTRATED)
38	017608	PILOT SHROUD - REAR
39	014801	CONTROL SUPPLY PIPE
40	011747	ELBOW - 3/8" x 1/2"
41	011656	REDUCING BUSH - 3/8" x 1/2"
42	019454	SOLENOID VALVE
43	013235	NIPPLE - 1/2"
44	018350	ELBOW - 1/2"
45	013153	FLAME FAILURE CONTROL

46	013836	ELBOW - 1/8" X 1/4"
47	013190	PILOT SUPPLY TUBE
48	012250	OVEN SUPPLY TUBE
49	011742	CONNECTOR - 1/8" x 1/4"
50	013184	CLAMP BRACKET
51	011634	ELBOW - 1/8"
52	013155	BALL VALVE
53	012753	CONNECTOR - 1/8" x 1/4"
54	013182	SAFETY MOUNTING BRACKET
55	013183	BALL VALVE MOUNTING BRACKET
56	011600	ELBOW - 3/8" x 1/2"
57	011601	REDUCING BUSH - 3/8" x 1/8"
58	032150	OVEN INJECTOR Ø1.50mm - PROPANE GAS
	032230	OVEN INJECTOR Ø2.30mm - NATURAL GAS
59	013263	OVEN PILOT SUPPLY TUBE
60	012248	OVEN BURNER
61	012608	PILOT BRACKET
62	018347	IGNITOR ELECTRODE - OVEN
	018252	ELECTRODE / HT LEAD ASSEMBLY (NOT ILLUSTRATED)
63	012331K	OVEN PILOT BURNER KIT (USES ITEM 20 PILOT SPUDS)
64	004154	PILOT SPACER
65	011771	THERMOCOUPLE