

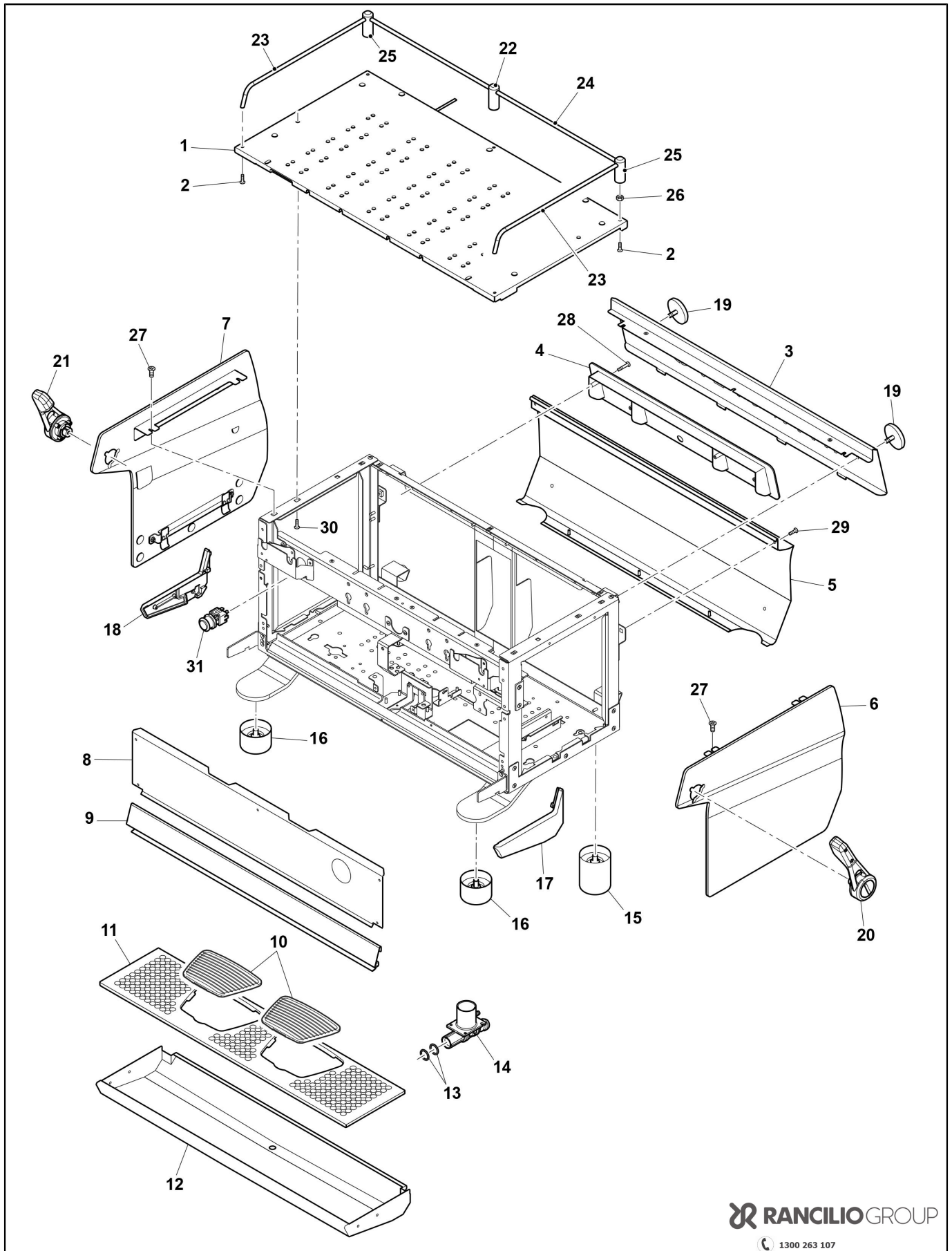
# RANCILIO SPECIALTY 1



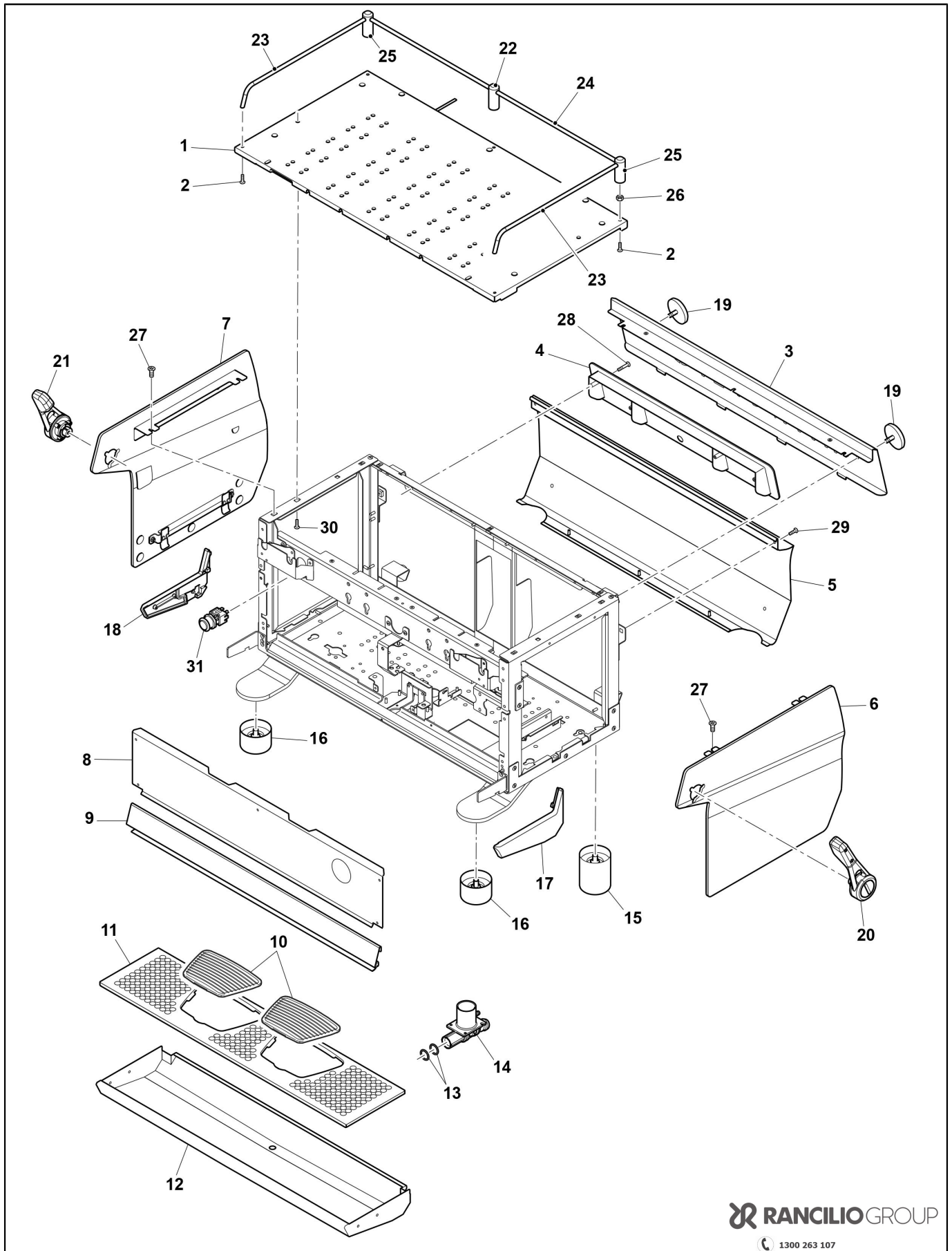
## RANCILIO SPECIALTY

## Index

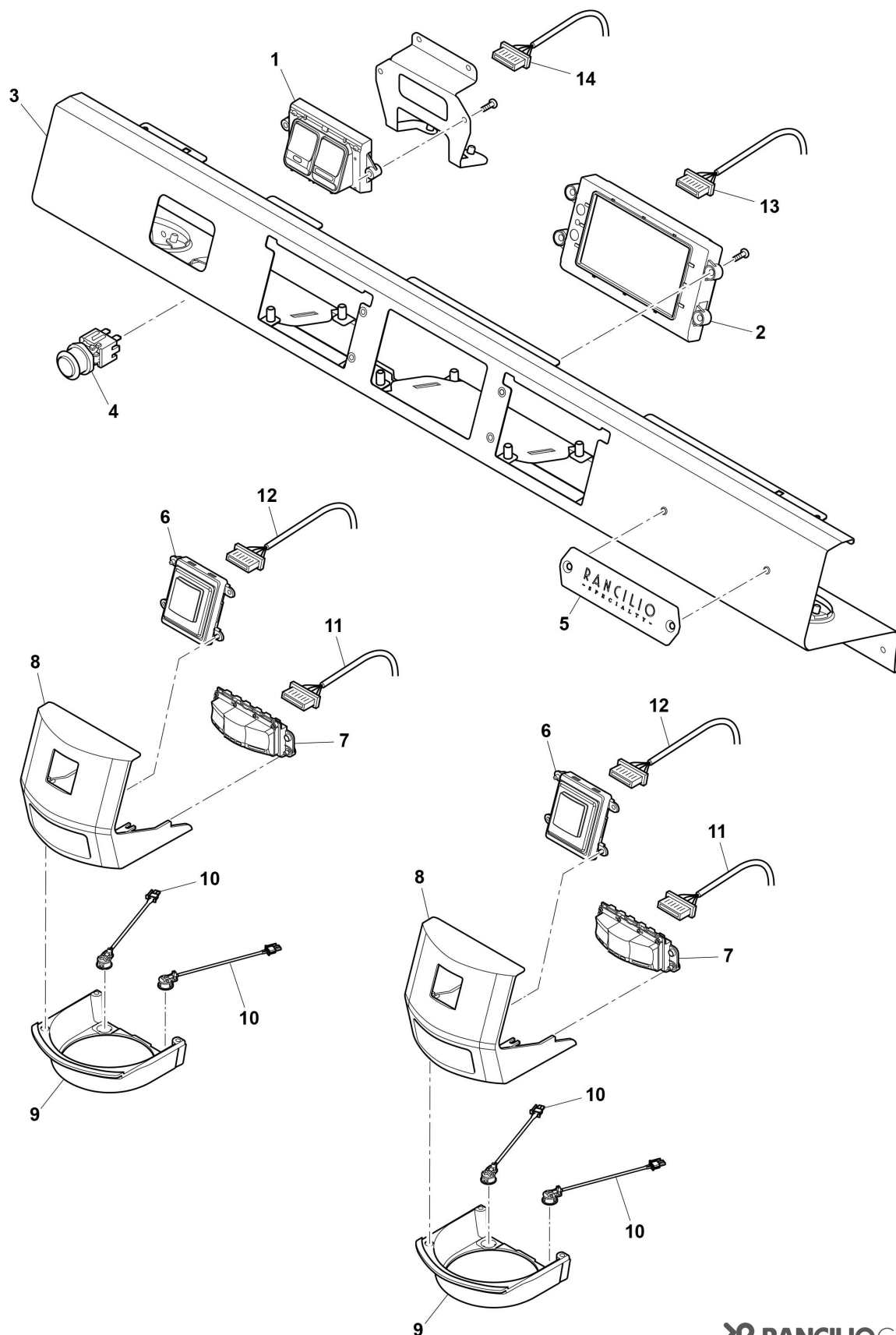
Table 1000 - Body.....	4
Table 1001 - CONTROL PANEL.....	8
Table 2003 - BOILER/MOTOR PUMP.....	10
Table 2000 - HYDRAULIC CIRCUIT.....	12
Table 2004 - GROUP.....	14
Table 2005 - SISTEMA ACQUA CALDA.....	16
Table 2006 - SISTEMA VAPORE.....	18
Table 3000 - PARTI ELETTRONICHE.....	20
Alphanumeric index.....	22



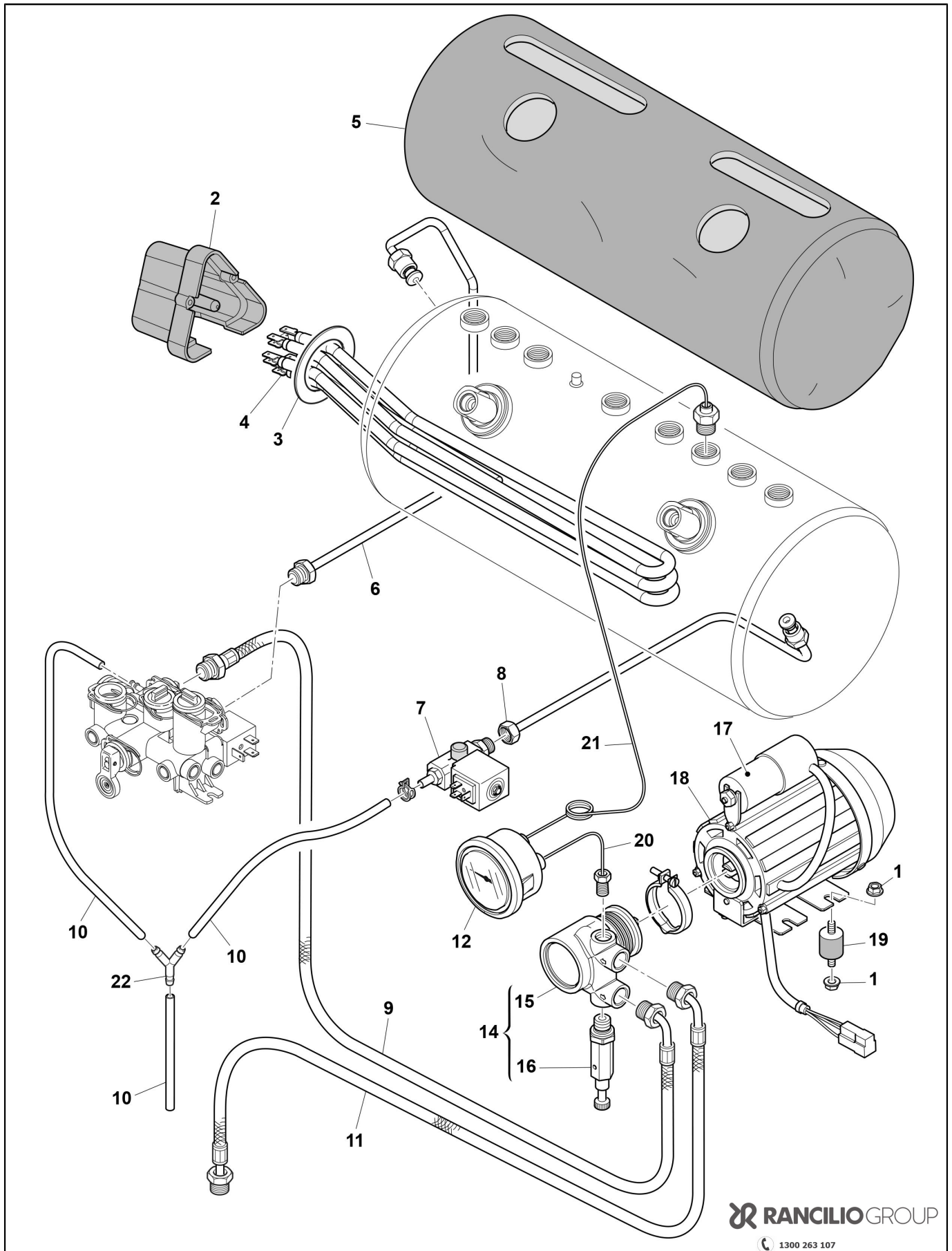
POS.	CODE	DESCRIPTION	NOTES
1	10701451	Top Lid 2Gr Rs1	
	10701452	Top Lid 3Gr Rs1	
2	00001069	Screw Tcb Cross Ph Inox M4X6	
3	32332247	Upper Rear Panel 2Gr Rs1 No Logo	
	32332247A	Rear Panel 2Gr Rs1 Black No Logo	
	32332248	Upper Rear Panel 3Gr Rs1 No Logo	
	32332248A	Rear Panel 3Gr Rs1 Black No Logo	
	32332268	Upper Rear Panel 2Gr Rs1	
	32332268A	PANNELLO POST.SUP.2GR.RS1-AI- NERO RAL 9017 BR.60&#248;	
	32332269	Upper Rear Panel 3Gr Rs1	
	32332269A	PANNELLO POST.SUP.3GR.RS1-AI- NERO RAL 9017 BR.60&#248;	
4	38120351	Rear Logo Rs1	
5	32332266	Lower Rear Panel 2Gr Rs1	
	32332266A	PANNELLO POST.INF.2GR.RS1-AI- NERO RAL 9017 BR.60&#248;	
	32332267	Lower Rear Panel 3Gr Rs1	
	32332267A	PANNELLO POST.INF.3GR.RS1-AI- NERO RAL 9017 BR.60&#248;	
6	10701432	Side Panel Right Rs1	
	10701432A	ASSIEME FIANCO DX RS1 NERO RAL 9017 BR.60&#248;	
7	10701431	Side Panel Left Rs1	
	10701431A	ASSIEME FIANCO SX RS1 NERO RAL 9017 BR.60&#248;	
8	32332260	Front Panel 2Gr Rs1	
	32332260A	MASCHERINA FRONTALE 2GR.RS1-AI-NERO RAL 9017 BR.60	
	32332261	Front Panel 3Gr Rs1	
	32332261A	MASCHERINA FRONTALE 3GR.RS1-AI-NERO RAL 9017 BR.60	
9	32332272	Protection Drain Tray 2Gr	
	32332272A	PARATIA BACINELLA 2GR.RS1-AI- NERO RAL 9017 BR.60&#248;	
	32332273	Protection Drain Tray 3Gr	
	32332273A	PARATIA BACINELLA 3GR.RS1-AI- NERO RAL 9017 BR.60&#248;	
10	38120591	Cup Tray Grid Black	
11	32332258	Cup Tray 2Gr Rs1	
	32332259	Cup Tray 3Gr Rs1	
	32332290	Cup Tray Rs1 Custom 2Gr	
	32332291	Cup Tray Custom 3Gr Rs1	
12	10701453	Drain Tray 2Gr Rs1	
	10701454	Drain Tray 3Gr Rs1	
13	36404069	O-Ring 14 X 2 Fpm 75 Sh	
14	38120353	Drain Tray Canalizer	
15	69000318	Foot+Gum Rear Rs1	
16	69000317	Foot+Gum Front Rs1	
17	20200291	Drain Tray Side Right Rs1	
	20200291A	FIANCO BACINELLA DX-AI-RS1 NERO RAL 9017 BR.60&#248;	
18	20200290	Drain Tray Side Left Rs1	
	20200290A	FIANCO BACINELLA SX-AI-RS1 NERO RAL 9017 BR.60&#248;	
19	23000384	Aesthetic Rear Bush Rs1	
20	10701802	Kit Steam Handle Right Rs1/21	
21	10701801	Kit Steam Handle Left Rs1/21	
22	23000389	Central Top Lid Bar Pin Rs1	
23	23000393	Side Top Lid Bar	
24	23000391	Central Top Lid Bar 2Gr	
	23000392	Central Top Lid Bar 3Gr	
25	23000390	Side Top Lid Bar Pin Rs1	
26	00001087	Screw Tcb Cross Ph Inox M5X12	
27	37030526	Screw M5X20 Croce Inox	
28	37030408	Screw M 4 X 8	



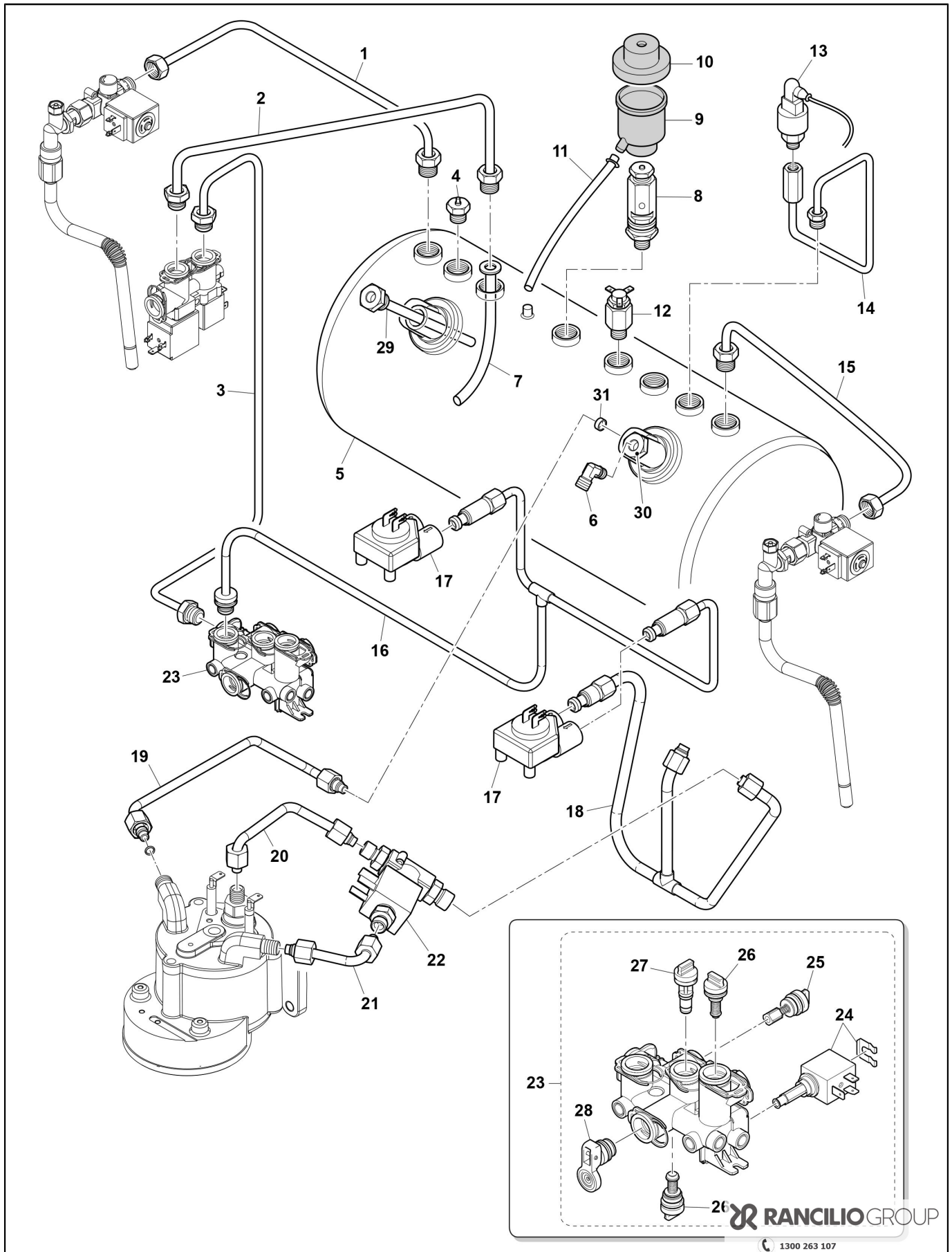
POS.	CODE	DESCRIPTION	NOTES
29	37030525	Screw M5 X 16 Tcb Ph Inox	
30	00001076	Screw Tcb Cross Ph Inox M4X12	
31	34030151	Main Switch Rs1	



POS.	CODE	DESCRIPTION	NOTES
1	10701589	Water Keyboard Rs1/18	
	32551474	Bracket Water Button	
2	10701570	Kit Touch Rs1	
3	32332262	Control Panel 2Gr Rs1	
	32332262A	PANNELLO COMANDI 2GR.RS1-AI- NERO RAL 9017 BR.60&#248;	
	32332263	Control Panel 3Gr Rs1	
	32332263A	PANNELLO COMANDI 3GR.RS1-AI- NERO RAL 9017 BR.60&#248;	
4	34030151	Main Switch Rs1	
5	42200143	Front Plate Rs1	
6	10701571	Kit Group Display Rs1	
7	10701590	Coffee Keyboard Rs1/18	
8	21300800	Group Cover Rs1	
9	38120350	Lower Group Cover	
10	10701458	Led Light Module Rs1	
11	10120011	Wiring Coffee Keyboard Rs1	
12	10120013	Wiring Can Bus Group Display Rs1	
13	10120039	Wiring Touch Screen Rs1	
14	10120012	Wiring Water Keyboard Rs2	



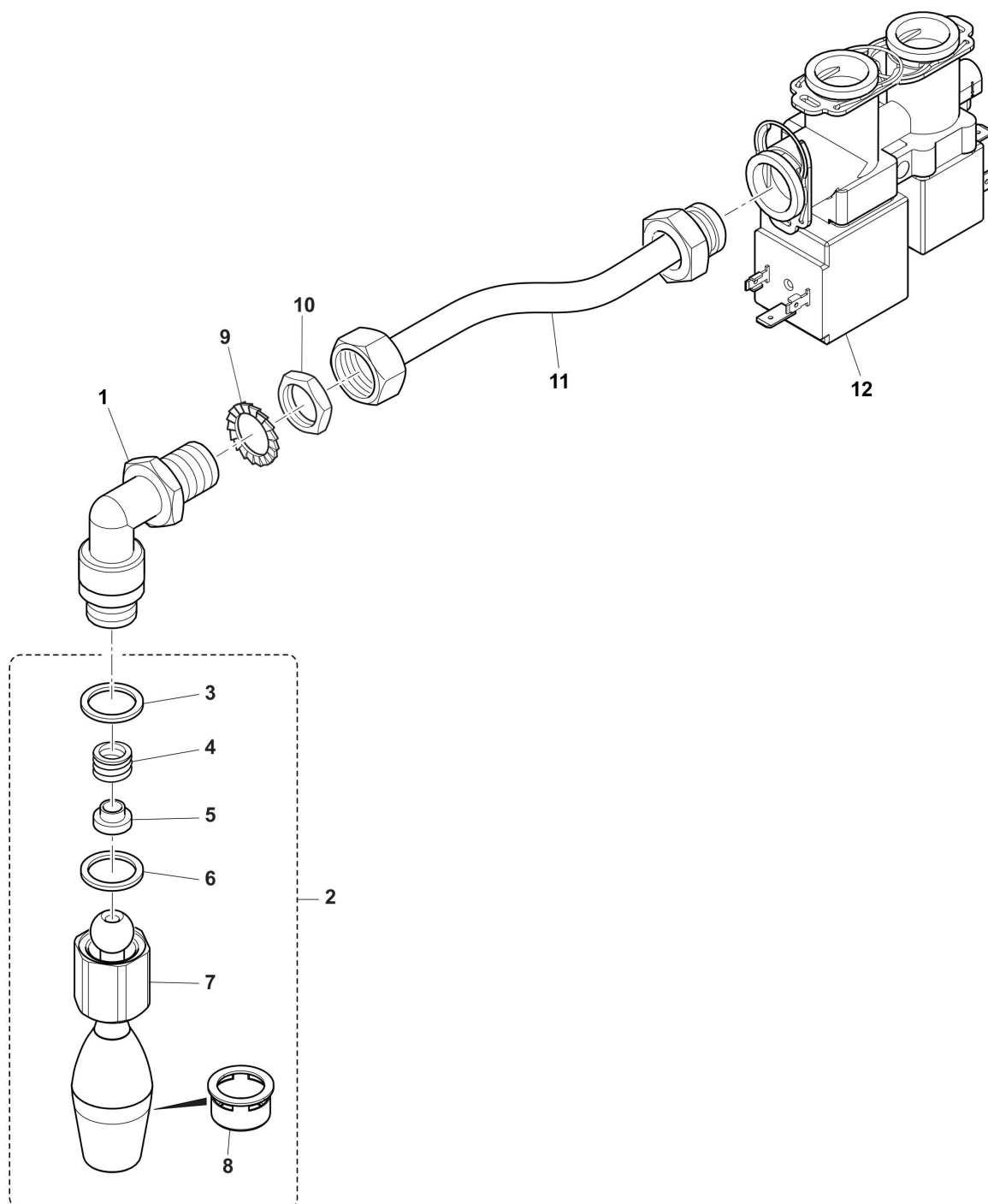
POS.	CODE	DESCRIPTION	NOTES
1	80134961	Nut M6	
2	38123665	Cover Heating Element	
3	36930012	Gasket Resistance Teflon	
4	33323007	Heating Element+Capillar 230V W5000	
5	69000432	Boiler Insulation 2Gr	
	69000433	Boiler Insulation 3Gr	
6	10042260	Pipe 6X4 Inlet Boiler H.H. Rs1	
7	10060178	Valve Drain Boiler	
8	10043234	Pipe 8X6 Drain Boiler 2Gr Rs1	
	10043240	Pipe 8X6 Drain Boiler 3Gr Rs1	
9	69000827	Flex Pipe 3/8M-Hydro Hub 1190Mm Bend	
10	38228002	Silicone Hose D. 9X6X560	
11	69000735	Flex Pipe Mm2300 With Elbow+Check Valve	
12	35002514	Manometer Double Scale Rs1	
14	10701441	Pump Assy. Rs1	
15	69000995	Pump 200L/H External Regulation	
16	10701479	Pump External Regulation Rs1	
17	34020014	Capacitor 10Mf 220V UI Vm	
18	34011102	Vm Motor 230V	
19	36322003	Anti-Vibrating Device 20 X 20 - M6 X 10 Sh45	
20	10041053	Pipe 4X3X600 F1/8 M3/8	
21	69000243	Pipe Capillary Manometer F1/8-M1/8	
22	00049643	T Connector 6Mm	



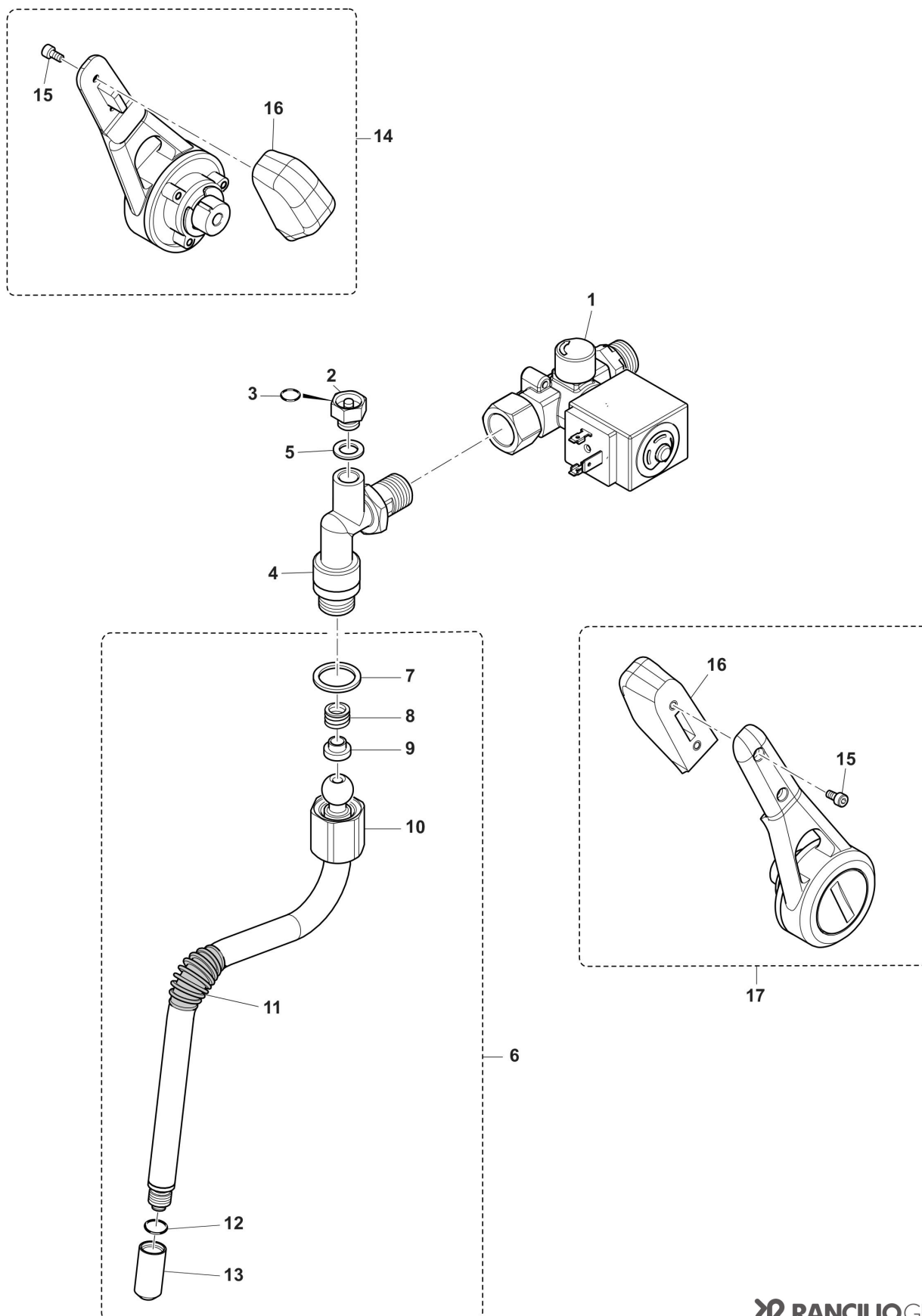
POS.	CODE	DESCRIPTION	NOTES
1	10043235	Pipe 8X6 Steam Left Rs1	
2	10043237	Pipe 8X6 Water Mixer-Boiler Rs1	
3	10042261	Pipe 6X4 Water Mixer H.H. Rs1	
4	10060051	Antivacuum Valve With Weight	
5	10022520T 10022530T	Boiler 2Gr Boiler 3Gr	
6	69200102D	Elbow G1/8 Pipe D8	
7	27120130	Hot Water Suction Pipe	
8	10060533	Safety Valve 1,9 Bar 3/8 2019	
9	38123947	Drain Tank Security Valve	
10	38123946	Security Valve Top	
11	38228002	Silicone Hose D. 9X6X560	
12	10060374	Three-Level Probe	
13	34200288	Pressure Sensor	
14	10043220	Pipe 8 X 6 Pressure Sensor Classe 7 Usb	
15	10043236	Pipe 8X6 Steam Right Rs1	
16	10046093 10046094	Pipe Flowmeter 2Gr Rs1 Pipe Flowmeter 3Gr Rs1	
17	34070315	Flowmeter 4 Magnets	
18	10700401	Pipe Flowmeter-T- Xcelsius Rs1	
19	10700403 23000185	Pipe Heat Exch-Group Rs1 Flow Limiter 1,1 Xcelsius	
20	10700405	Pipe Valve Xcelsius Jet Rs1	
21	10700404	Pipe Valve Xcelsius Group Rs1	
22	10701477	Valve Profiling Rs1	
23	10701244	Hydro Hub 24V	
24	69140013	Operator Kit 24V Hydraulic Module	
25	69140009	Pressure Relief Valve Hydraulic Module	
26	69140047	Kit Check Valve Complete	
27	69140006	Filter Hydraulic Module	
28	69140008	Manual Tap Hydraulic Module	
29	30001031	Boiler Injector Pipe Xcelsius	
30	23000179	Connector Injector Xcelsius	
31	23000415	Connector Heat. Exch. Group	



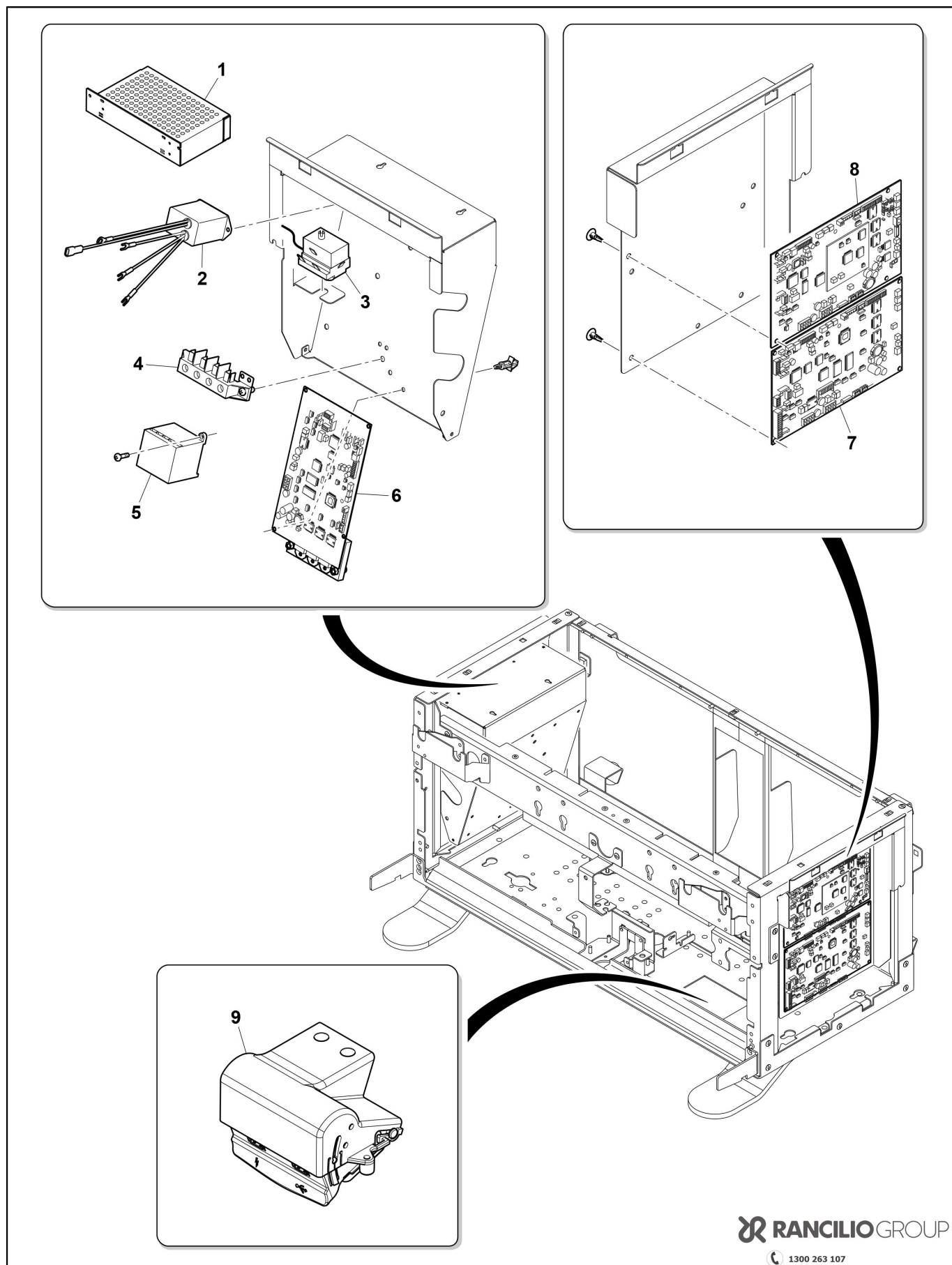
POS.	CODE	DESCRIPTION	NOTES
1	10051100	Group Inox Xcelsius Rs1	
2	38120367	Heating Elements Group Cover Rs1	
3	23000404	Connector 3Rd Way Xcelsius	
4	27400002	Gasket For Brewing Group Cap	
5	34070115	Temperature Sensor Pt1000 1/8 Xcelsius Inox	
6	36402003	O-Ring 9,25 X 1,78 V 75Sh	
7	00100300.001	Temperature Limiter 140 C	
8	10701442	Grouphead Xcelsius	
9	36404050	O-Ring 71,44 X 3,53 Epdm	
10	10060604	Group Head Jet Xcelsius	
11	20200271	Group Body Rs1	
12	23000146	Brewing Chamber Cap Xcelsius	
13	27350008	Copper Gasket 29X24,2X1,5	
14	36301046	Group Gasket Perossidica Hp	
15	23000397	Shower Holder Inox	
16	40200014	Shower Inox Rs1	
17	36402005	O-Ring Electrovalve	
18	34040151	Electrovalve 3/2 24V (Sirai)	
19	33111003	Heating Element Group Rs1 Sticker	
	34070312	Group Temperature Probe Rs1	
20	10071140R	Filterholder RS1	
	10071143R	PORTAF.BOTTOMLESS RS1 CONFEZIONATO	
	10071150R	Filterholder Stainless Steel Wood	
	10071151R	Filterholder Bottomless Stainless Steel Wood	
	40100005	1 Dose Deeper Filter	
	40100096	3 Cup Filter	
	40100098	Competition Filter H26	
	40100106	8Gr Filter Inox	
	40100108	18Gr Filter Inox	
21	25105007	Filter Spring	
22	36901004	Filter-Holder Handle Rs1	
23	36404034	O-Ring 2056 Water Sprayer	
24	21100711	Outlet 2 Doses Inox	
25	21100721	Outlet 1 Dose Inox	
26	10042264	Pipe 6X4 Drain Group Bent Rs1	1st and 3rd group for 3gr 1° e 3° gruppo per 3gr
	10042265	Pipe 6X4 Drain Group Straight Rs1	2nd group for 3gr 1st and 2nd group for 2gr
	38120327	Jet Breaker Group Drain Pipe	
27	37040520	Screw M5 X 10	



POS.	CODE	DESCRIPTION	NOTES
1	20200114	Elbow Connector Hot Water	
2	10705245	Connection+Movement Water Inox	
3	36220009	Gasket Nut Note Teflon	
4	39110038	Spring Connection Steam Tap	
5	36930017	Teflon Gasket For Steam Wand Nut	
6	36930016	Gasket Teflon Connection Steam Wand	
7	10049014	Water Outlet	
8	25135019	Mixing Nozzle	
9	37431600	Outer Toothed Washer D16	
10	26220005	Flat Nut 3/8	
11	10043238	Pipe 8X6 Water Mixer-Water Wand Rs1	
12	10705788	Tea Water Mixer 24V-Pps	



POS.	CODE	DESCRIPTION	NOTES
1	10701480	Valve Steam Rs1.	
2	23000130	Pin Av Steam Tap	
	23000370	A.V. Teflon Connector Steam Tap	
3	36404049	O-Ring 3,68 X 1,78 Epdm	
4	20200297	Elbow Connector Steam Rs1	
5	36240002	Gasket 1/8 Copper	
6	10701443	Steam Wand Assy. Rs1	
7	36220009	Gasket Nut Note Teflon	
8	39110038	Spring Connection Steam Tap	
9	36930016	Gasket Teflon Connection Steam Wand	
10	10049134	Cooltouch Wand Rs1	
11	36990004	Rubber For Steam Pipes	
12	36404049	O-Ring 3,68 X 1,78 Epdm	
13	23000395	Sprayer	
14	10701801	Kit Steam Handle Left Rs1/21	
	34020131	Magnet Steam Handle	
	36230020	Teflon Washer Steam Wand	
	38120358	Magnet Holder Steam Handle	
15	00100001.208	Screw M4X8 Tcei Inox	
16	36901003	Rubber Steam Handle Rs1	
	47200015	Wood Handle Steam Lever	
17	10701802	Kit Steam Handle Right Rs1/21	
	34020131	Magnet Steam Handle	
	36230020	Teflon Washer Steam Wand	
	38120358	Magnet Holder Steam Handle	



POS.	CODE	DESCRIPTION	NOTES
1	10701457	Power Supply Rs1	
2	34021011	Emc Filter	
3	34200097	Save- Heating Element Ego Monof.	
4	34150026	Clamp 4 Position	
5	34200332	Mini-Contactor 220-240V	
6	10701567	Kit Power Board Rs/C20	
7	10120014	Wiring Can Bus Cpu-Triac Rs1	
	10701569	Kit Triac Board Rs1	
8	10120014	Wiring Can Bus Cpu-Triac Rs1	
	10701568	Kit Cpu Board Rs1	
9	10120050	Wiring Usb Rs1	
	10701483	Usb Module Rs1	

Code	No. table	Pos.
00001069	1000	2
00001076	1000	30
00001087	1000	26
00049643	2003	22
00100001.208	2006	15
00100300.001	2004	7
10022520T	2000	5
10022530T	2000	5
10041053	2003	20
10042260	2003	6
10042261	2000	3
10042264	2004	26
10042265	2004	26
10043220	2000	14
10043234	2003	8
10043235	2000	1
10043236	2000	15
10043237	2000	2
10043238	2005	11
10043240	2003	8
10046093	2000	16
10046094	2000	16
10049014	2005	7
10049134	2006	10
10051100	2004	1
10060051	2000	4
10060178	2003	7
10060374	2000	12
10060533	2000	8
10060604	2004	10
10071140R	2004	20
10071143R	2004	20
10071150R	2004	20
10071151R	2004	20
10120011	1001	11
10120012	1001	14
10120013	1001	12
10120014	3000	7
10120014	3000	8
10120039	1001	13
10120050	3000	9
10700401	2000	18
10700403	2000	19
10700404	2000	21
10700405	2000	20
10701244	2000	23
10701431	1000	7
10701431A	1000	7
10701432	1000	6
10701432A	1000	6
10701441	2003	14
10701442	2004	8
10701443	2006	6
10701451	1000	1
10701452	1000	1
10701453	1000	12
10701454	1000	12
10701457	3000	1
10701458	1001	10
10701477	2000	22
10701479	2003	16
10701480	2006	1
10701483	3000	9
10701567	3000	6
10701568	3000	8
10701569	3000	7
10701570	1001	2

Code	No. table	Pos.
10701571	1001	6
10701589	1001	1
10701590	1001	7
10701801	1000	21
10701801	2006	14
10701802	1000	20
10701802	2006	17
10705245	2005	2
10705788	2005	12
20200114	2005	1
20200271	2004	11
20200290	1000	18
20200290A	1000	18
20200291	1000	17
20200291A	1000	17
20200297	2006	4
21100711	2004	24
21100721	2004	25
21300800	1001	8
23000130	2006	2
23000146	2004	12
23000179	2000	30
23000185	2000	19
23000370	2006	2
23000384	1000	19
23000389	1000	22
23000390	1000	25
23000391	1000	24
23000392	1000	24
23000393	1000	23
23000395	2006	13
23000397	2004	15
23000404	2004	3
23000415	2000	31
25105007	2004	21
25135019	2005	8
26220005	2005	10
27120130	2000	7
27350008	2004	13
27400002	2004	4
30001031	2000	29
32332247	1000	3
32332247A	1000	3
32332248	1000	3
32332248A	1000	3
32332258	1000	11
32332259	1000	11
32332260	1000	8
32332260A	1000	8
32332261	1000	8
32332261A	1000	8
32332262	1001	3
32332262A	1001	3
32332263	1001	3
32332263A	1001	3
32332266	1000	5
32332266A	1000	5
32332267	1000	5
32332267A	1000	5
32332268	1000	3
32332268A	1000	3
32332269	1000	3
32332269A	1000	3
32332272	1000	9
32332272A	1000	9
32332273	1000	9
32332273A	1000	9

Code	No. table	Pos.
32332290	1000	11
32332291	1000	11
32551474	1001	1
33111003	2004	19
33323007	2003	4
34011102	2003	18
34020014	2003	17
34020131	2006	14
34020131	2006	17
34021011	3000	2
34030151	1000	31
34030151	1001	4
34040151	2004	18
34070115	2004	5
34070312	2004	19
34070315	2000	17
34150026	3000	4
34200097	3000	3
34200288	2000	13
34200332	3000	5
35002514	2003	12
36220009	2005	3
36220009	2006	7
36230020	2006	14
36230020	2006	17
36240002	2006	5
36301046	2004	14
36322003	2003	19
36402003	2004	6
36402005	2004	17
36404034	2004	23
36404049	2006	12
36404049	2006	3
36404050	2004	9
36404069	1000	13
36901003	2006	16
36901004	2004	22
36930012	2003	3
36930016	2005	6
36930016	2006	9
36930017	2005	5
36990004	2006	11
37030408	1000	28
37030525	1000	29
37030526	1000	27
37040520	2004	27
37431600	2005	9
38120327	2004	26
38120350	1001	9
38120351	1000	4
38120353	1000	14
38120358	2006	14
38120358	2006	17
38120367	2004	2
38120591	1000	10
38123665	2003	2
38123946	2000	10
38123947	2000	9
38228002	2000	11
38228002	2003	10
39110038	2005	4
39110038	2006	8
40100005	2004	20
40100096	2004	20
40100106	2004	20
40100108	2004	20

Code	No. table	Pos.
40200014	2004	16
42200143	1001	5
47200015	2006	16
69000243	2003	21
69000317	1000	16
69000318	1000	15
69000432	2003	5
69000433	2003	5
69000735	2003	11
69000827	2003	9
69000995	2003	15
69140006	2000	27
69140008	2000	28
69140009	2000	25
69140013	2000	24
69140047	2000	26
69200102D	2000	6
80134961	2003	1

## Headquarters, Production Plant and R&D Centers

### Rancilio Group s.p.a.

Viale della Repubblica 40  
20010 Villastanza di Parabiago  
Milano - Italy  
Tel +39 0331 408200  
Fax +39 0331 551437  
[www.ranciliogroup.com](http://www.ranciliogroup.com)  
[info@ranciliogroup.com](mailto:info@ranciliogroup.com)

### Egro Suisse AG

Bahnhofstrasse 66  
5605 Dottikon, Switzerland  
Tel. +41 (0)56 616 95 95  
Fax +41 (0)56 616 95 97  
[www.egrocoffee.com](http://www.egrocoffee.com)  
[info@egrocoffee.com](mailto:info@egrocoffee.com)

## Worldwide Branch Locations

### SPAIN

RancilioGroup Espana, s.a.  
Gran Via de Carlos III, 84 3ª  
Edificio Trade  
08028 Barcelona - Spain  
Tel. +34 902 884 275  
Tel. +34 934 923 414  
Fax +34 934 965 701  
[www.ranciliogroup.com](http://www.ranciliogroup.com)  
[info-es@ranciliogroup.com](mailto:info-es@ranciliogroup.com)

### PORTUGAL

Rancilio Group Portugal Lda  
Estrada da Falagueira nº 68 E  
2700-365 Amadora-Lisboa - Portugal  
Tel. +351 21 019 10 91  
Fax +351 21 019 10 91

Rua Nova do Seixo 1282  
4465-706 Leça do Balio-Porto - Portugal  
Tel. +351 22 010 14 19  
Fax +351 22 010 14 19  
[www.ranciliogroup.com](http://www.ranciliogroup.com)  
[info-pt@ranciliogroup.com](mailto:info-pt@ranciliogroup.com)

### GERMANY

Rancilio Group Deutschland GmbH  
Talstrasse 27  
97990 Weikersheim - Germany  
Ph. +49 7934 99 29 30  
Fax +49 7934 99 29 330  
[www.ranciliogroup.de](http://www.ranciliogroup.de)  
[info-de@ranciliogroup.com](mailto:info-de@ranciliogroup.com)

### SWITZERLAND

Egro Suisse AG  
Bahnhofstrasse 66  
5605 Dottikon - Switzerland  
Tel. +41 (0)56 616 95 95  
Fax +41 (0)56 616 95 97  
[www.egrosuisse.ch](http://www.egrosuisse.ch)  
[info@egrosuisse.ch](mailto:info@egrosuisse.ch)

### USA/CANADA

Rancilio Group North America Inc.  
1340 Internationale Parkway / Suite 200  
Woodridge, IL 60517 - U.S.A.  
Ph: +1 630 914 7900  
Fax: +1 630 914 7901  
Toll Free: +1 877 726 2454  
[www.ranciliogroup.com](http://www.ranciliogroup.com)  
[info@ranciliogroupna.com](mailto:info@ranciliogroupna.com)