

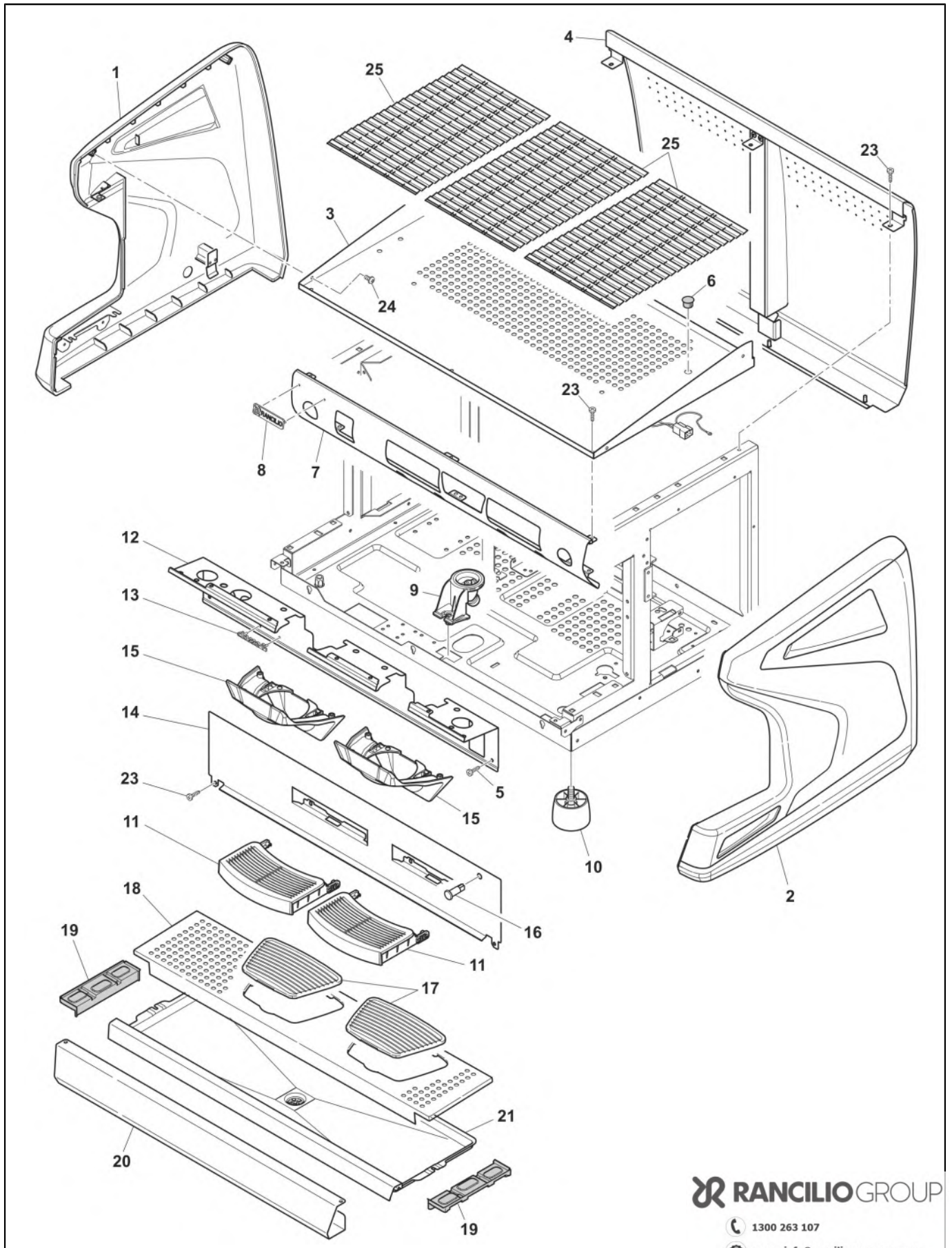
CLASSE 5 TALL



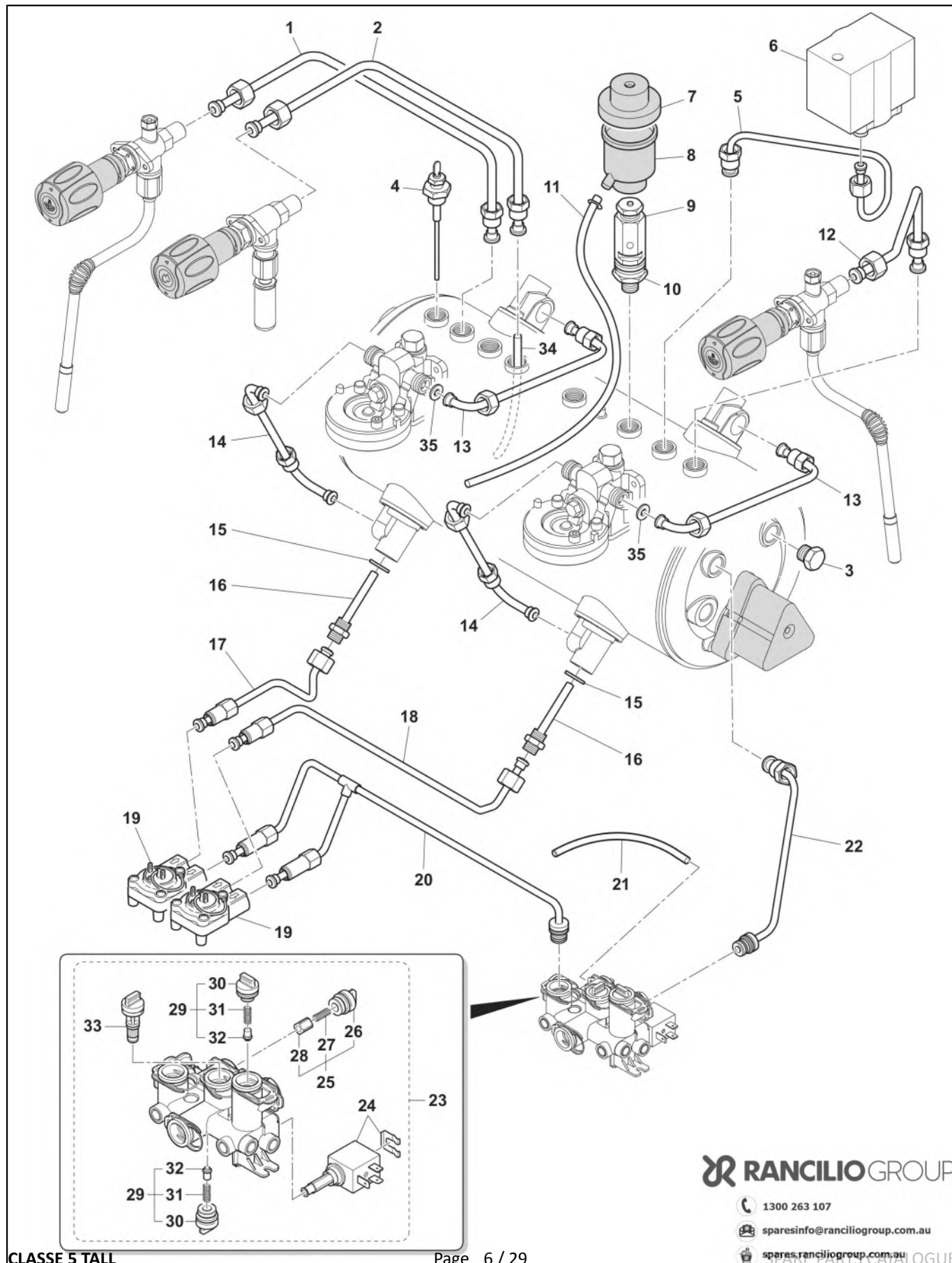
CLASSE 5

Index

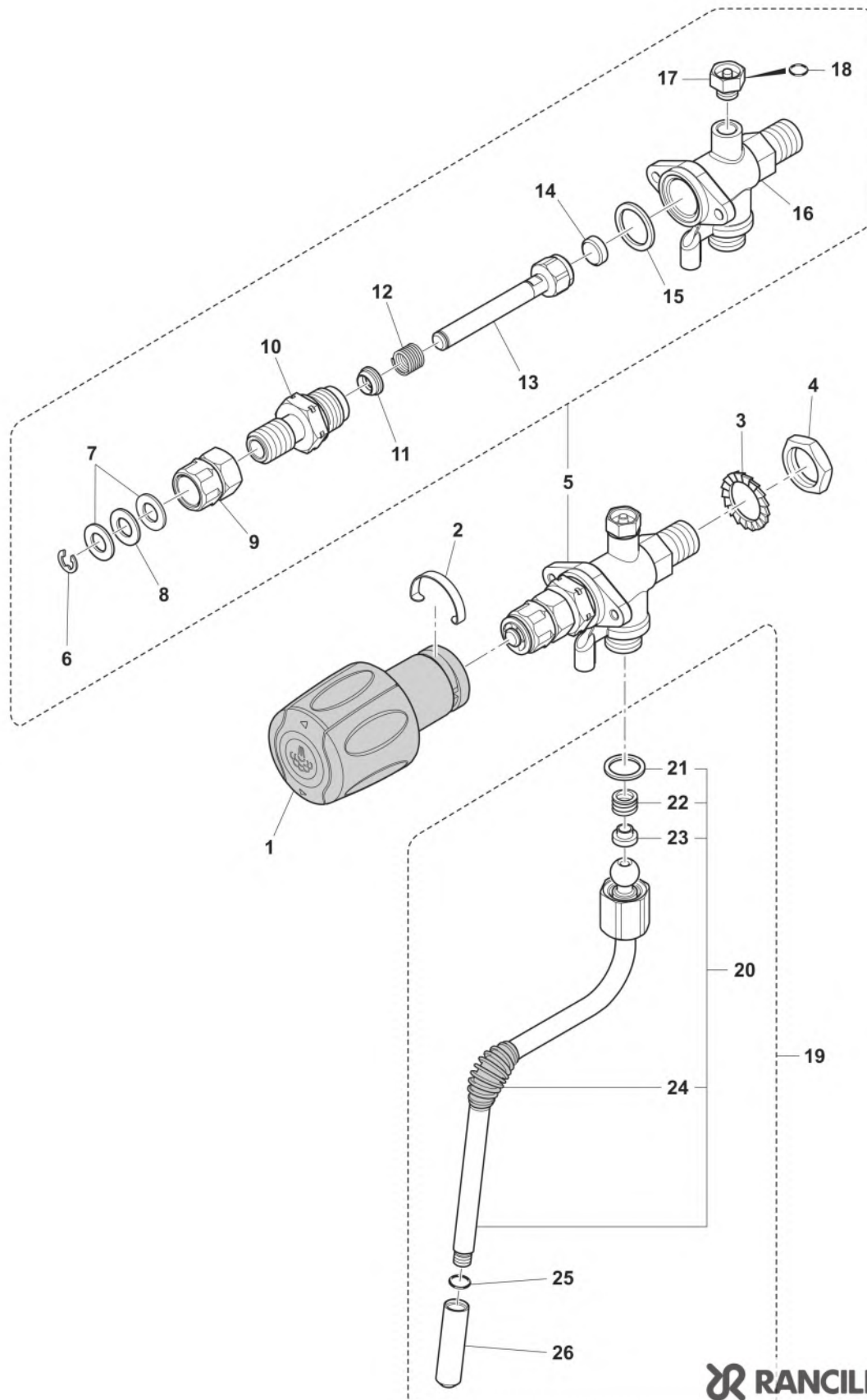
Table 1000_2 - HOUSING TALL.....	4
Table 2000_31 - IMPIANTO IDRAULICO USB TALL da 04/2018 S/N 10274669.....	6
Table 2007 - STEAM TAP.....	8
Table 2008 - WATER TAP.....	10
Table 2000_3 - IMPIANTO IDRAULICO USB TALL.....	12
Table 2011 - GRUPPO EROGAZIONE SB.....	14
Table 2009 - IMPIANTO IDRAULICO SB USB.....	16
Table 2003 - BOILER/MOTOR PUMP.....	18
Table 2004 - GROUP.....	20
Table 3000 - ELECTRIC/ELECTRONIC PARTS USB.....	22
Table 4000 - Clever Steam Tap	24
Alphanumeric index.....	26



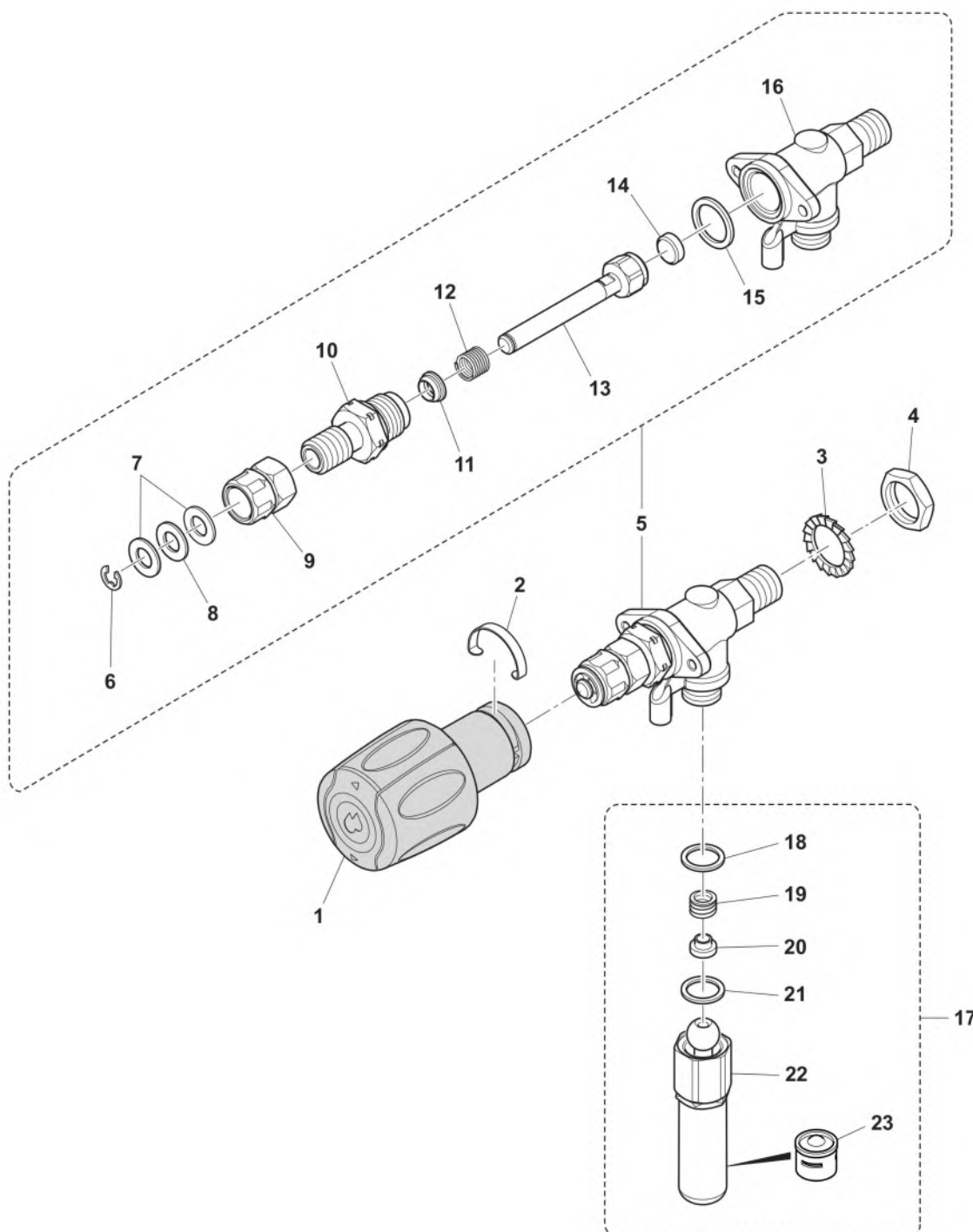
POS.	CODE	DESCRIPTION	NOTES
1	10701188	Side Panel Left Black Classe 5-7/16	
	10701260	Side Panel Left White Classe 5-7/16	
2	10701187	Side Panel Right Black Classe 5-7/16	
	10701259	Side Panel Right White Classe 5-7/16	
3	10701492	Sticker Cup Warmer 2Gr Classe 5/7 Assy.	
	10701493	Sticker Cup Warmer 3Gr Classe 5/7 Assy.	
	32332281	Top Lid C5 2Gr	
	32332282	Top Lid C5 3Gr	
4	32331960	Rear Panel 2Gr Classe 5	
	32331961	Rear Panel 3Gr Classe 5	
5	37154212	Screw 4,2X13	
6	38221007	Cap Diam.11	
7	32331926	Control Panel 2Gr Classe 5 Usb	
	32331927	Control Panel 3Gr Classe 5 Usb	
8	42200121	Rancilio Plate Mm 70	
9	38120578	Drain Tray Canalizer	
10	38123568	Machine Foot	
	38123852	Riser For Machine Foot	
11	10781163	Extractible Rise	
	10781218	Kit Plate Guide Tall	
12	32332082	Upper Front Panel 2Gr Classe 5 Tall	
13	42200140	Plate C5	
14	32332079	Lower Front Panel 2Gr C5 Tall	
15	38120284	Group Cover C5 Tall	
16	34030110	Round Orange Lamp	
17	38120591	Cup Tray Grid Black	
18	32331951	Cup Tray 2Gr Classe 5	
	32331952	Cup Tray 3Gr Classe 5	
19	38120286	Side Cup Tray Support Mc/15	
20	32331936	Lower Panel Drain Tray 2Gr Classe 5	
21	10781363	Drain Tray 2Gr Classe 5	
	10781364	Drain Tray 3Gr Classe 5	
23	37154212	Screw 4,2X13	
24	37030408	Screw M 4 X 8	
25	38123933	Heating Cups Grate Mm 232X380	



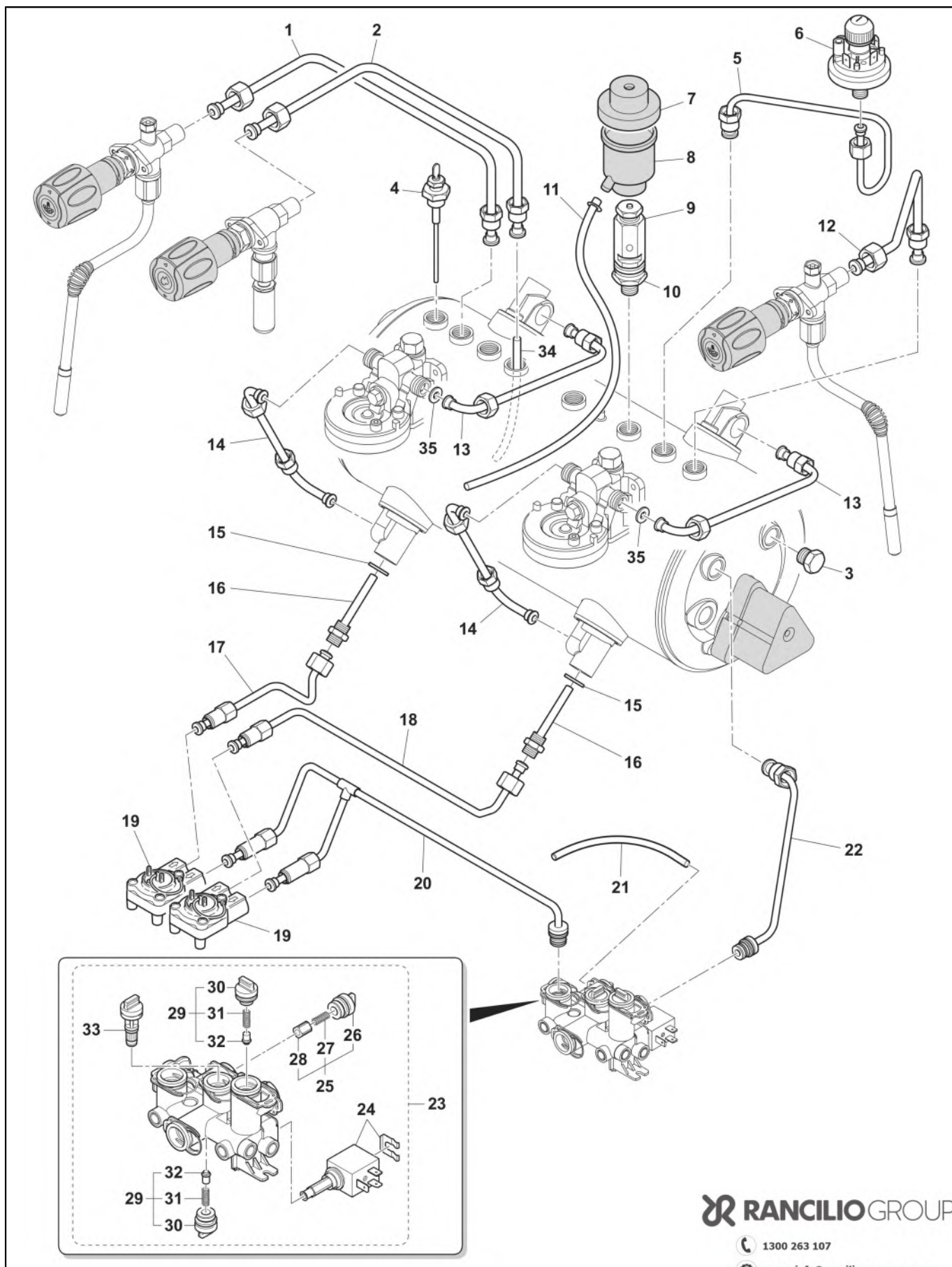
POS.	CODE	DESCRIPTION	NOTES
1	10043120	Pipe 8 X 6 F3/8-M3/8 Steam Pipe Left-Boiler Tall	
2	10043120	Pipe 8 X 6 F3/8-M3/8 Steam Pipe Left-Boiler Tall	
3	23000368	Cap 3/8 For Heater Exchanger	
4	34200088	Level Probe Assembly	
5	10043242	Pipe 8 X 6 F1/4-M3/8 Pressure Switch-Boiler	
6	34200110	Pressure Switch	
7	38123946	Security Valve Top	
8	38123947	Drain Tank Security Valve	
9	10060532	Safety Valve+Extension 1,65 3/8	
11	38228003	Silicone Hose D. 9 X 6Mml = 480 Mm	
12	10043119	Pipe 8X6 F3/8-M3/8 Steam Tap Right Tall	
13	10044098	Pipe Circulation Mm275 F1/2-M1/2 Mc/15	
14	10044097	Pipe Circulation Mm225 F1/2-M1/2 Mc/15	
15	27350001	Gasket 3/8 X 1 Copper	
16	10042032	Injector Pipe 127	
17	10042156	Pipe 6 X 4 Central Flowmeter-Heat. Exch. F1/4-M1/4	
18	10042157	Pipe 6 X 4 Central Flowmeter-Heat. Exch. F1/4-M1/4	
	10042158	Pipe 6 X 4 Right Flowmeter-Heat. Exch. F1/4-M1/4	
19	34070060	Flowmeter Horiz. Connection	
20	10046079	Pipe Flowmeter 2Gr/15	
	10046080	Pipe Flowmeter 3Gr/15	
	36404052	O-Ring 9,16 X 2,62 F 3037	
21	38228002	Silicone Hose D. 9X6X560	
22	10042226	Pipe 6 X 4 Sn-M3/8 Boiler Inlet	
	36404052	O-Ring 9,16 X 2,62 F 3037	
23	10701245	Hydro Hub 120V 60Hz	
	10701246	Hydro Hub 230V	
24	69140014	Operator Kit 220-240V Hydraulic Module	
	69140015	Operator Kit 110-120V Hydraulic Module	
25	69140009	Pressure Relief Valve Hydraulic Module	
26	69140019	Pressure Relief Valve Cap	
27	69140010	Spring Pressure Relief Valve Hydraulic Module	
28	69140011	Plunger Pressure Relief Valve Hydraulic Module	
29	69140047	Kit Check Valve Complete	
30	69140016	Check Valve Cap	
31	69140018	Spring Check Valve	
32	69140048	Gummy+Bush	
33	69140006	Filter Hydraulic Module	
34	27120130	Hot Water Suction Pipe	
35	23125009	Group Restriction 3.5Mm	



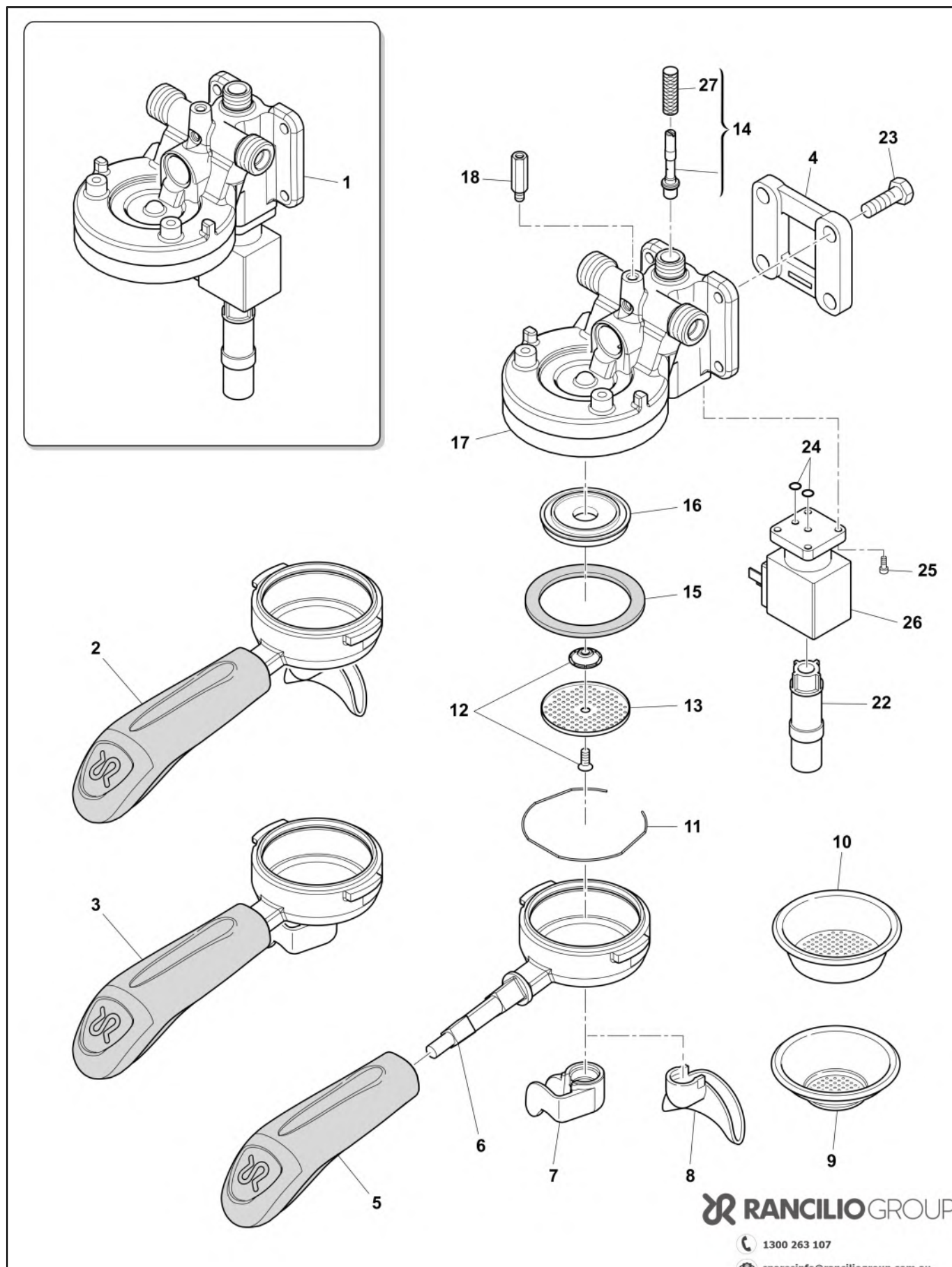
POS.	CODE	DESCRIPTION	NOTES
1	10060189	Steam Tap/16	
2	32210001	Steam Handle Spring	
3	37431600	Outer Toothed Washer D16	
4	26220005	Flat Nut 3/8	
5	10060149	Steam Tap+Av Valve	
6	37510700	Snap Ring D. 7	
7	32239044	New Steam Cock Washer	
8	36230001	Teflon Washer	
9	23220029	Reg Bush For New Cock	
10	23000302	Stem Guide Ptfе	
11	36990078	Shaft Gasket Fast Tap	
12	39110035	Water-Steam Cock Spring	
13	10060002	Rod+Nut And Steam Cock Gasket	
14	36301105	Gasket For Nut Steam Tap Epdm	
15	27400001	Gasket Copper Compass Re Group	
16	10701621	Steam Tap Body With Av. Valve/19	
17	10705180	Kit Av Valve Steam Tap	
18	36404058	O-Ring 3.68 X 1.78 Epdm 70Sh Teflon	
19	10706034	Steam Pipe+Joint Lg.25 Inox	
20	10049112	Steam Pipe Inox Lg 25	
21	36220009	Gasket Nut Note Teflon	
22	39110038	Spring Connection Steam Tap	
23	36930016	Gasket Teflon Connection Steam Wand	
24	36990004	Rubber For Steam Pipes	
25	36301050	O-Ring 6.4X1.9	
26	23000120	Steam Sprayer Lg.25 Diam. 1,1	
	23000121	Sprayer Lg25 D1.1 4Holes	
27	36930017	Teflon Gasket For Steam Wand Nut	



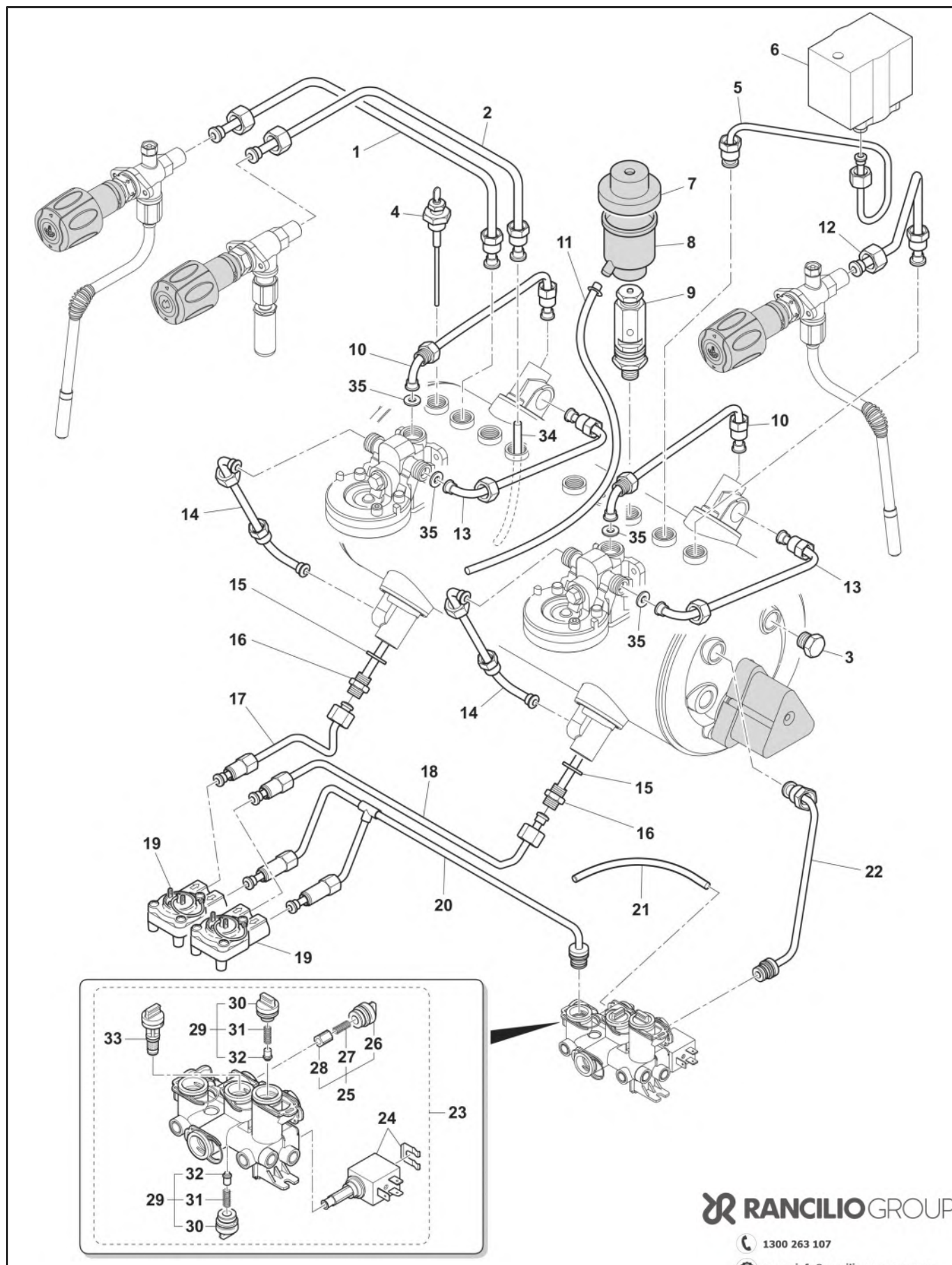
POS.	CODE	DESCRIPTION	NOTES
1	10060188	Hot Water Tap Handle/16	
2	32210001	Steam Handle Spring	
3	37431600	Outer Toothed Washer D16	
4	26220005	Flat Nut 3/8	
5	10060153	Water Tap	
6	37510700	Snap Ring D. 7	
7	32239044	New Steam Cock Washer	
8	36230001	Teflon Washer	
9	23220029	Reg Bush For New Cock	
10	23000302	Stem Guide Ptfе	
11	36990078	Shaft Gasket Fast Tap	
12	39110035	Water-Steam Cock Spring	
13	10060002	Rod+Nut And Steam Cock Gasket	
14	36301105	Gasket For Nut Steam Tap Epdm	
15	27400001	Gasket Copper Compass Re Group	
16	10060023	Steam Tap Body With Bush+A.V. Valve	
17	10701406	Hot Water Wand+Extension Classe 5	
	10701409	LANCIA ACQUA C5 ETL-AI-	
18	36220009	Gasket Nut Note Teflon	
19	39110038	Spring Connection Steam Tap	
20	36930016	Gasket Teflon Connection Steam Wand	
21	36930017	Teflon Gasket For Steam Wand Nut	
22	10049014	Water Outlet	ETL version
	10705799	ROMPISPRUZZO+SPRUZZATORE-AI-	
	23000373	Extension Water Wand Classe 5	
23	25135020	Water Sprayer Filter C7	



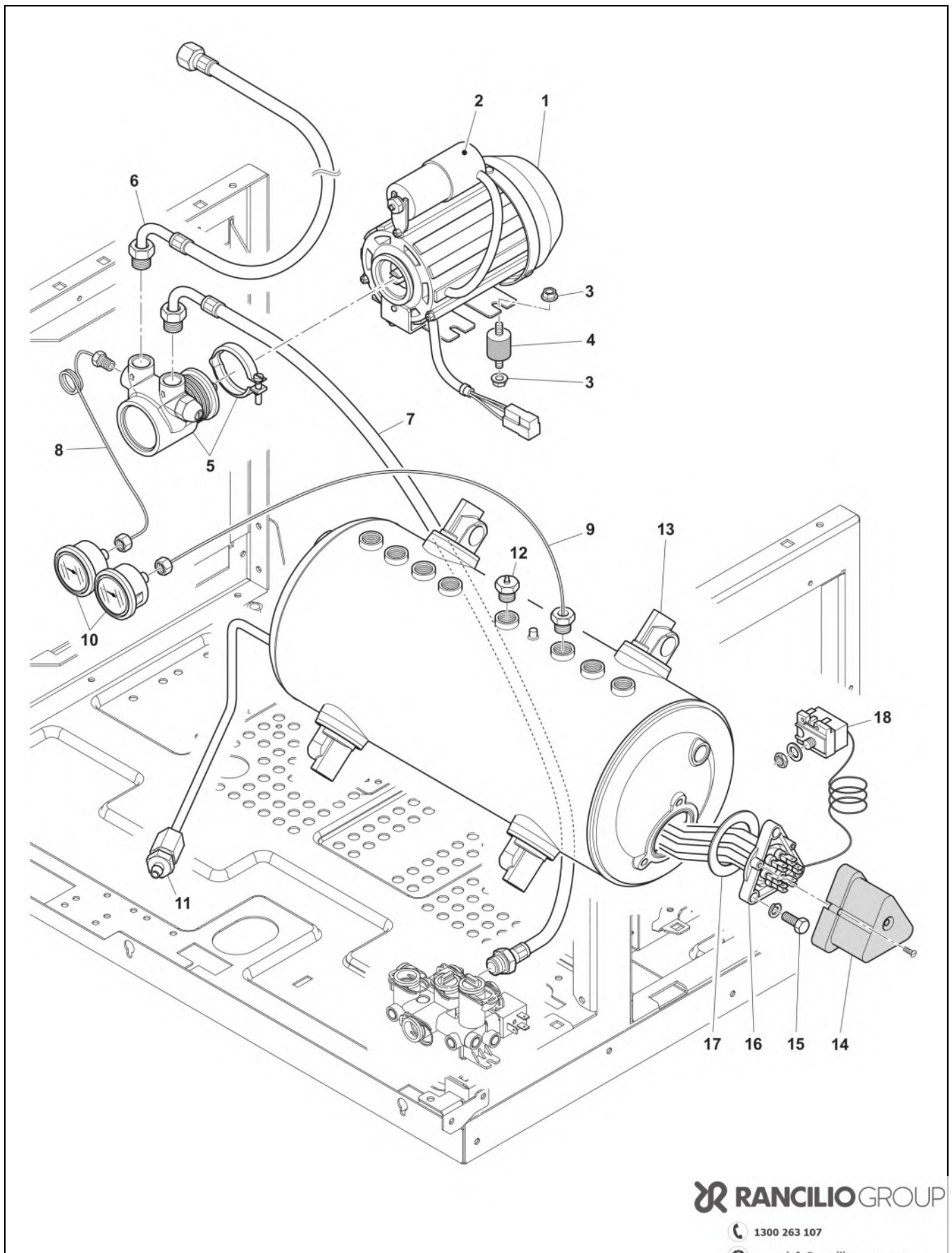
POS.	CODE	DESCRIPTION	NOTES
1	10043120	Pipe 8 X 6 F3/8-M3/8 Steam Pipe Left-Boiler Tall	
2	10043122	Pipe 8X6 F1/4-M3/8 Water-Boiler C7 Tall	
3	23000368	Cap 3/8 For Heater Exchanger	
4	34200088	Level Probe Assembly	
5	10042166	Pipe 6 X 4 F1/4-M3/8 Pressure Switch-Boiler	
6	10111023	Mechanical Pressure Switch Wired P302/6	
	10701538	Retrofit Kit Pressure Switch Triphase Classe 5-7S	
7	38123946	Security Valve Top	
8	38123947	Drain Tank Security Valve	
9	10060525	Safety Valve 1,9Bar 3/8	
10	23000359	Safety Valve Extension	
11	38228003	Silicone Hose D. 9 X 6Mml = 480 Mm	
12	10043119	Pipe 8X6 F3/8-M3/8 Steam Tap Right Tall	
13	10044097	Pipe Circulation Mm225 F1/2-M1/2 Mc/15	
14	10044098	Pipe Circulation Mm275 F1/2-M1/2 Mc/15	
15	27350001	Gasket 3/8 X 1 Copper	
16	10042032	Injector Pipe 127	
17	10042153	Pipe 6 X 4 Central Flowmeter-Heat. Exch. F1/4-M1/4	
18	10042154	Pipe 6X4 Flowmeter-Heat Exc. Cent.F1/4-M1/4 Tall	
	10042155	Pipe 6X4 Flowmeter-Heat Exc. Right F1/4-M1/4 Tall	
19	34070060	Flowmeter Horiz. Connection	
20	10046079	Pipe Flowmeter 2Gr/15	
	10046080	Pipe Flowmeter 3Gr/15	
	36404052	O-Ring 9,16 X 2,62 F 3037	
21	38228002	Silicone Hose D. 9X6X560	
22	10042152	Pipe 6 X 4 Hh-M3/8 Boiler Inlet Tall	
	36404052	O-Ring 9,16 X 2,62 F 3037	
23	10701245	Hydro Hub 120V 60Hz	
	10701246	Hydro Hub 230V	
24	69140014	Operator Kit 220-240V Hydraulic Module	
	69140015	Operator Kit 110-120V Hydraulic Module	
25	69140009	Pressure Relief Valve Hydraulic Module	
26	69140019	Pressure Relief Valve Cap	
27	69140010	Spring Pressure Relief Valve Hydraulic Module	
28	69140011	Plunger Pressure Relief Valve Hydraulic Module	
29	69140047	Kit Check Valve Complete	
30	69140016	Check Valve Cap	
31	69140018	Spring Check Valve	
32	69140048	Gummy+Bush	
33	69140006	Filter Hydraulic Module	
34	27120130	Hot Water Suction Pipe	
35	23125009	Group Restriction 3.5Mm	



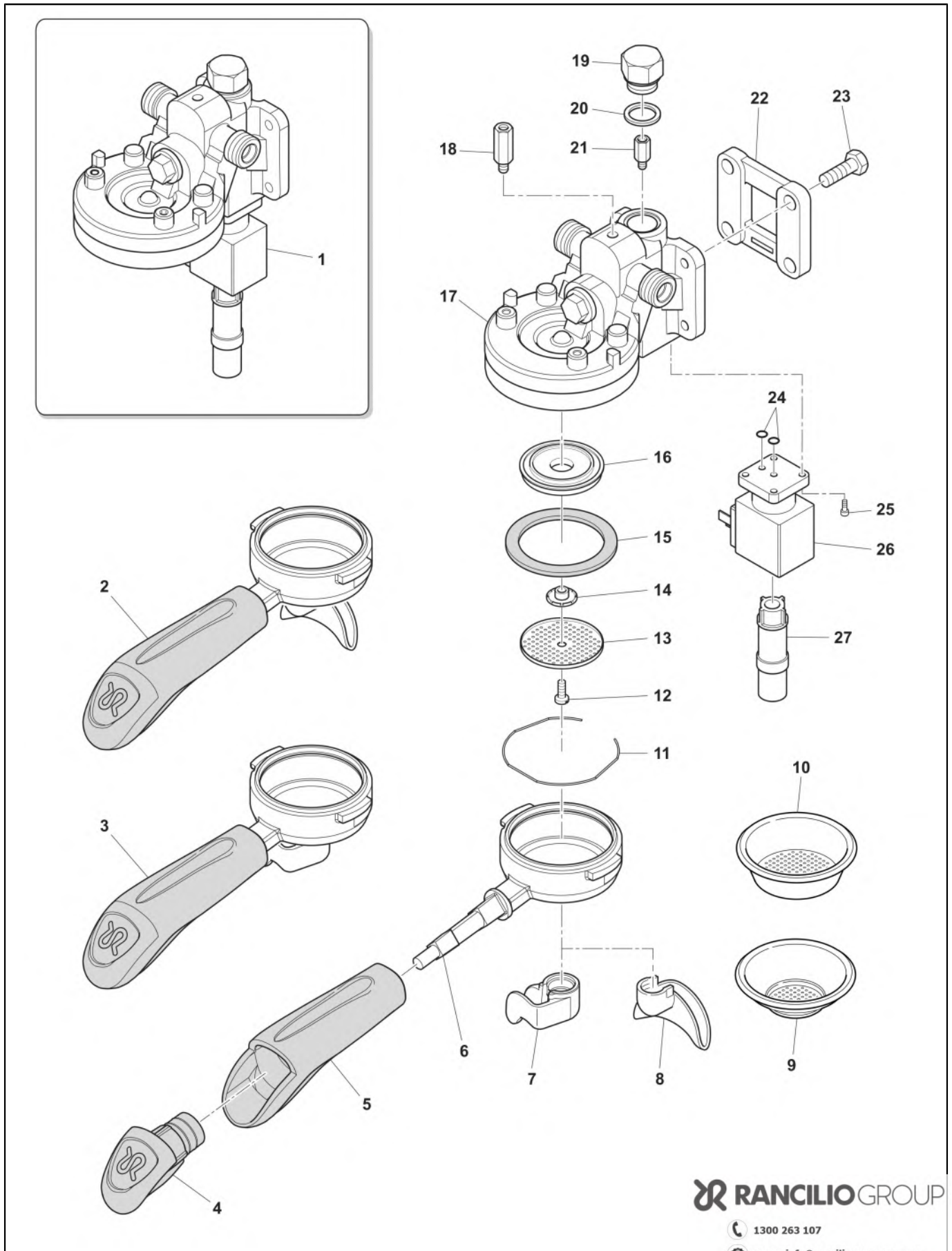
POS.	CODE	DESCRIPTION	NOTES
1	10051227	ASSIEME GRUPPO 230V GIGLEUR VERT/2019	
	10051229	ASSIEME GRUPPO 120V ETL GIGLEUR VERT/2019	
2	10071137R	Porta-Filter Rr/09 2Doses	
3	10071118R	Porta-Filter Rr/09 1Dose	
4	21300710	Group Space Sleeve	
5	10705091	Kit Filter Holder Tap 07	
6	20112211	Filter Holder Body Mc/09	
7	21102601	1 Cup Beak Mc/09	
8	21100801	2 Cup Beak Mc/09	
9	40100106	8Gr Filter Inox	
10	40100107	16Gr Filter Inox	
11	25105007	Filter Spring	
12	10701784	Group Jetbreaker With Screw/20	
13	40200005	Shower Net	
14	10060622	Restrictor Brewing Group SB 0,6 Naneflon	
	10060623	Restrictor Brewing Group SB 0,8 Naneflon	
15	36301046	Group Gasket Perossidica Hp	
16	20200182	Shower Holder Brass	
17	20200301	Body Group	
18	23000311	Spacer M6 X 30	
22	10090002	Therm.Group Jetbreaker	
23	37040830	Screw M 8X30	
24	36402005	O-Ring Electrovalve	
25	37060413	Screw M 4 X 12	
26	34040149	Valve 3/2 220-240V UI (Sirai)	
	34040150	Valve 3/2 110-120V 60Hz UI (Sirai)	
27	32910008	Filter Net 6,2 X 22	



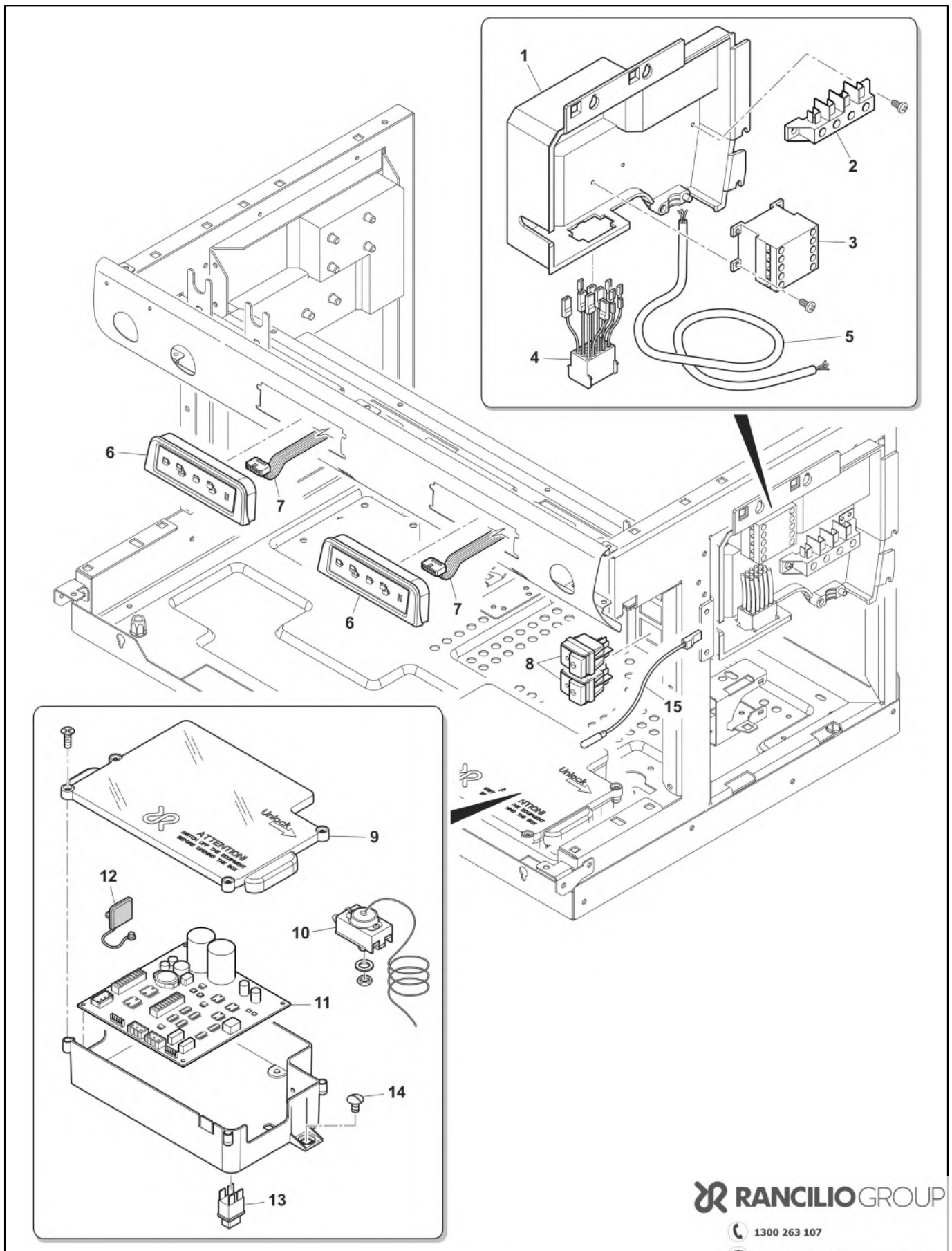
POS.	CODE	DESCRIPTION	NOTES
1	10043120	Pipe 8 X 6 F3/8-M3/8 Steam Pipe Left-Boiler Tall	
2	10043120	Pipe 8 X 6 F3/8-M3/8 Steam Pipe Left-Boiler Tall	
3	23000368	Cap 3/8 For Heater Exchanger	
4	34200088	Level Probe Assembly	
5	10043242	Pipe 8 X 6 F1/4-M3/8 Pressure Switch-Boiler	
6	34200110	Pressure Switch	
7	38123946	Security Valve Top	
8	38123947	Drain Tank Security Valve	
9	10060533	Safety Valve 1,9 Bar 3/8 2019	
10	10043245	Pipe 8X6 Grouphead	
11	38228005	Silicon Tube D.6X4	
12	10043119	Pipe 8X6 F3/8-M3/8 Steam Tap Right Tall	
13	10044098	Pipe Circulation Mm275 F1/2-M1/2 Mc/15	
14	10044097	Pipe Circulation Mm225 F1/2-M1/2 Mc/15	
15	27350001	Gasket 3/8 X 1 Copper	
16	10042032	Injector Pipe 127	
17	10042156	Pipe 6 X 4 Central Flowmeter-Heat. Exch. F1/4-M1/4	
18	10042157	Pipe 6 X 4 Central Flowmeter-Heat. Exch. F1/4-M1/4	
	10042158	Pipe 6 X 4 Right Flowmeter-Heat. Exch. F1/4-M1/4	
19	34070060	Flowmeter Horiz. Connection	
20	10046079	Pipe Flowmeter 2Gr/15	
	10046080	Pipe Flowmeter 3Gr/15	
	36404052	O-Ring 9,16 X 2,62 F 3037	
21	38228002	Silicone Hose D. 9X6X560	
22	10042226	Pipe 6 X 4 Sn-M3/8 Boiler Inlet	
	36404052	O-Ring 9,16 X 2,62 F 3037	
23	10701245	Hydro Hub 120V 60Hz	
	10701246	Hydro Hub 230V	
24	69140014	Operator Kit 220-240V Hydraulic Module	
	69140015	Operator Kit 110-120V Hydraulic Module	
25	69140009	Pressure Relief Valve Hydraulic Module	
26	69140019	Pressure Relief Valve Cap	
27	69140010	Spring Pressure Relief Valve Hydraulic Module	
28	69140011	Plunger Pressure Relief Valve Hydraulic Module	
29	69140047	Kit Check Valve Complete	
30	69140016	Check Valve Cap	
31	69140018	Spring Check Valve	
32	69140048	Gummy+Bush	
33	69140006	Filter Hydraulic Module	
34	27120130	Hot Water Suction Pipe	
35	23125021	Group Restriction 2 Mm	
	23125028	Reducer 2 Mm	



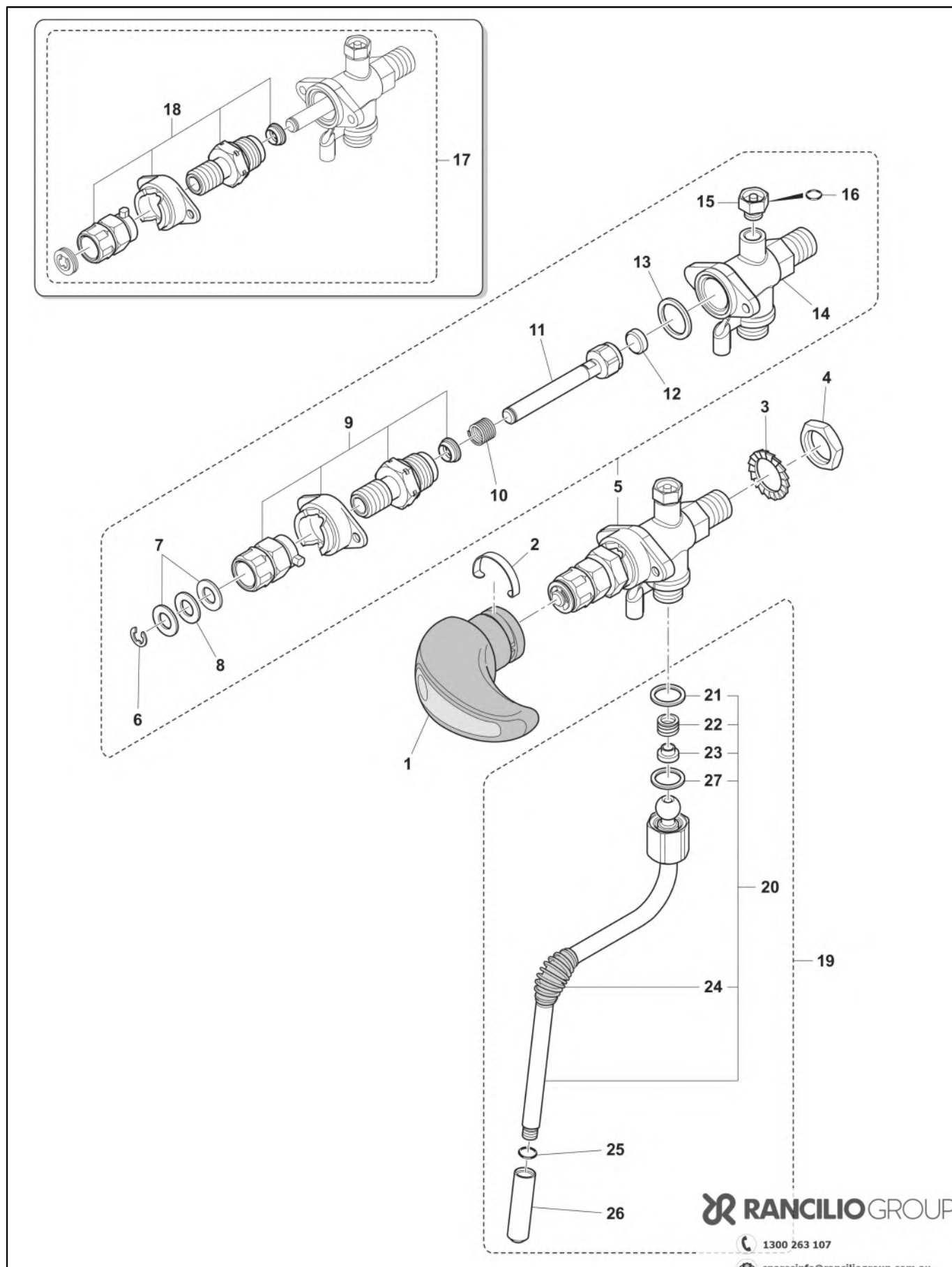
POS.	CODE	DESCRIPTION	NOTES
1	34011102	Vm Motor 230V	
2	34020014	Capacitor 10Mf 220V UI Vm	
3	80134961	Nut M6	
4	36322003	Anti-Vibrating Device 20 X 20 - M6 X 10 Sh45	
5	69000993	Volumetric Pump Vm 200L/H Rancilio	
6	69000734	Flex Pipe Mm1800 With Elbow+Check Valve	
	69000735	Flex Pipe Mm2300 With Elbow+Check Valve	
7	69000826	Flex Pipe 3/8M-Hydro Hub 960Mm Bend	
	69000827	Flex Pipe 3/8M-Hydro Hub 1190Mm Bend	
8	69000243	Pipe Capillary Manometer F1/8-M1/8	
9	10041053	Pipe 4X3X600 F1/8 M3/8	
10	35002512	Manometer Boiler Mc/15	
	35002513	Manometer Pumpe 0-16	
11	10043017	TUBO 8X6X251 F1/4-F3/8 -CU-	VERSIONE CON SCARICO LATERALE VERSION WITH SIDE DRAIN
	10043020	Pipe 8X6 Drain Boiler Assy.	VERSIONE PER SCARICO CENTRALE VERSION WITH CENTRAL DRAIN CONNECTION
12	10060051	Antivacuum Valve With Weight	
13	10022520T	Boiler 2Gr	
	10022530T	Boiler 3Gr	
	10701376	Boiler Retrofit Kit 2Gr	
	10701377	Boiler Retrofit Kit 3Gr	
14	38123665	Cover Heating Element	
15	37040821	Screw M 8X22	
16	33323004	Heating Element Capill. 230V/4300W	
	33323006	Heating Element+Capillar 230V 6000W	
17	36930012	Gasket Resistance Teflon	
18	34200329	Tecasa Save-Heating Element With Cap	



POS.	CODE	DESCRIPTION	NOTES
1	10051191	Brewing Group Vert. Jet 230V	
	10051192	Brewing Group Vert. Jet 110V	
2	10071137R	Porta-Filter Rr/09 2Doses	
3	10071118R	Porta-Filter Rr/09 1Dose	
4	10705535	Filterholder Cap With Ring	
5	10705091	Kit Filter Holder Tap 07	
6	20112211	Filter Holder Body Mc/09	
7	21102601	1 Cup Beak Mc/09	
8	21100801	2 Cup Beak Mc/09	
9	40100005	1 Dose Deeper Filter	
	40100106	8Gr Filter Inox	
10	40100090	Deeper 2 Cup Filter	
	40100102	2 Cup Calibrated Filter	
	40100107	16Gr Filter Inox	
	40100108	18Gr Filter Inox	
11	25105007	Filter Spring	
12	37030518	Shower Screw	
13	40200005	Shower Net	
14	25139001	Group Jetbreaker	
15	36301046	Group Gasket Perossidica Hp	
16	20200182	Shower Holder Brass	
	20200183	Shower Screen Holder Low Profile	
17	20200053P	Brewing Group Body Vert. Jet	
18	23000311	Spacer M6 X 30	
	37040611	Inox Screw M 6 X 10	
19	23000227	Group Jet Cap	
20	27400002	Gasket For Brewing Group Cap	
21	10060612	Brewing Group Flow Limiter Assy.	
	10060618	Group Jet 0.6	
	10701616	Teflon Restrictor Assy.	
22	21300710	Group Space Sleeve	
23	37040830	Screw M 8X30	
24	36402005	O-Ring Electrovalve	
25	37060413	Screw M 4 X 12	
26	34040149	Valve 3/2 220-240V UI (Sirai)	
	34040150	Valve 3/2 110-120V 60Hz UI (Sirai)	
27	10042014	Pipe Jet Breaker Copper	tall version 1x 2gr 1x 3gr
	10042016	Pipe Jet Breaker Copper Right	tall version 1x 2gr 2x 3gr
	10090002	Therm.Group Jetbreaker	version standard
	38120327	Jet Breaker Group Drain Pipe	version tall



POS.	CODE	DESCRIPTION	NOTES
1	10110900	Electric Box 230V Mc/16	
2	34150026	Clamp 4 Position	
3	34200333	Mini-Contactor Abb 220/240V	
4	10110655	Wiring Power	
5	34300073	Cavo H07Rn-F 5C.Sez.2,5 L=2000	
6	10701677	Keyboard Classe 5 Usb	
7	10110923	Keyboard Wiring 2Gr Classe 5-7 Usb 1Pos.	only for 2gr 1st group on the left solo per 2gr primo gruppo a sx
	10110924	Keyboard Wiring 2-3Gr Classe 5-7	2gr: pos.2 (group right) 3gr: pos.1 (1st group left)
	10110925	Keyboard Wiring 3Gr Classe 5-7 Usb 3Pos.	only for 3gr: pos. 3 (group right) solo per 3gr: pos. 3 (gruppo dx)
	10110927	Keyboard Wiring Classe 5-7 Usb 2Pos.	only for 3gr: pos 2 (central group) solo per 3gr: pos 2 (gruppo centrale)
8	34030971	Switch Green Light	
9	38120582	Main Board Lid Mc/15	
10	34200329	Tecasa Save-Heating Element With Cap	
11	10701308	Kit Main Board C5 Usb 230V	
	10701329	Kit Usb Board Classe 5 110V	
12	10110907	Electronic Box 230V Classe 5 Usb	
	38120519	Usb Drive Cap	
13	34030145	Main Switch	
14	34200103	Plastic Closing Screw	
15	34030116	Neon Lamp	



POS.	CODE	DESCRIPTION	NOTES
1	10060181	Handle Clever	
2	32210001	Steam Handle Spring	
3	37431600	Outer Toothed Washer D16	
4	26220005	Flat Nut 3/8	
5	10060148	Fast Steam Tap Right	
6	37510700	Snap Ring D. 7	
7	32239044	New Steam Cock Washer	
8	36230001	Teflon Washer	
9	10701239	Kit Clever/15 Cams Peek Right	
10	39110035	Water-Steam Cock Spring	
11	10060002	Rod+Nut And Steam Cock Gasket	
12	36301105	Gasket For Nut Steam Tap Epdm	
13	27400001	Gasket Copper Compass Re Group	
14	10701621	Steam Tap Body With Av. Valve/19	
15	10705180	Kit Av Valve Steam Tap	
16	36404058	O-Ring 3.68 X 1.78 Epdm 70Sh Teflon	
17	10060147	Fast Steam Tap Left	
18	10701240	Kit Clever/15 Cams Peek Left	
20	10049112	Steam Pipe Inox Lg 25	
21	36220009	Gasket Nut Note Teflon	
22	39110038	Spring Connection Steam Tap	
23	36930016	Gasket Teflon Connection Steam Wand	
24	36990004	Rubber For Steam Pipes	
25	36301050	O-Ring 6.4X1.9	
26	23212035	Steam Sprayer Lg44 D1.5	
27	36930017	Teflon Gasket For Steam Wand Nut	

Code	No. table	Pos.
10022520T	2003	13
10022530T	2003	13
10041053	2003	9
10042014	2004	27
10042016	2004	27
10042032	2000_3	16
10042032	2000_31	16
10042032	2009	16
10042152	2000_3	22
10042153	2000_3	17
10042154	2000_3	18
10042155	2000_3	18
10042156	2000_31	17
10042156	2009	17
10042157	2000_31	18
10042157	2009	18
10042158	2000_31	18
10042158	2009	18
10042166	2000_3	5
10042226	2000_31	22
10042226	2009	22
10043017	2003	11
10043020	2003	11
10043119	2000_3	12
10043119	2000_31	12
10043119	2009	12
10043120	2000_3	1
10043120	2000_31	1
10043120	2000_31	2
10043120	2009	1
10043120	2009	2
10043122	2000_3	2
10043242	2000_31	5
10043242	2009	5
10043245	2009	10
10044097	2000_3	13
10044097	2000_31	14
10044097	2009	14
10044098	2000_3	14
10044098	2000_31	13
10044098	2009	13
10046079	2000_3	20
10046079	2000_31	20
10046079	2009	20
10046080	2000_3	20
10046080	2000_31	20
10046080	2009	20
10049014	2008	22
10049112	2007	20
10049112	4000	20
10051191	2004	1
10051192	2004	1
10051227	2011	1
10051229	2011	1
10060002	2007	13
10060002	2008	13
10060002	4000	11
10060023	2008	16
10060051	2003	12
10060147	4000	17
10060148	4000	5
10060149	2007	5
10060153	2008	5
10060181	4000	1
10060188	2008	1
10060189	2007	1
10060525	2000_3	9

Code	No. table	Pos.
10060532	2000_31	9
10060533	2009	9
10060612	2004	21
10060618	2004	21
10060622	2011	14
10060623	2011	14
10071118R	2004	3
10071118R	2011	3
10071137R	2004	2
10071137R	2011	2
10090002	2004	27
10090002	2011	22
10110655	3000	4
10110900	3000	1
10110907	3000	12
10110923	3000	7
10110924	3000	7
10110925	3000	7
10110927	3000	7
10111023	2000_3	6
10701187	1000_2	2
10701188	1000_2	1
10701239	4000	9
10701240	4000	18
10701245	2000_3	23
10701245	2000_31	23
10701245	2009	23
10701246	2000_3	23
10701246	2000_31	23
10701246	2009	23
10701259	1000_2	2
10701260	1000_2	1
10701308	3000	11
10701329	3000	11
10701376	2003	13
10701377	2003	13
10701406	2008	17
10701409	2008	17
10701492	1000_2	3
10701493	1000_2	3
10701538	2000_3	6
10701616	2004	21
10701621	2007	16
10701621	4000	14
10701677	3000	6
10701784	2011	12
10705091	2004	5
10705091	2011	5
10705180	2007	17
10705180	4000	15
10705535	2004	4
10705799	2008	22
10706034	2007	19
10781163	1000_2	11
10781218	1000_2	11
10781363	1000_2	21
10781364	1000_2	21
20112211	2004	6
20112211	2011	6
20200053P	2004	17
20200182	2004	16
20200182	2011	16
20200183	2004	16
20200301	2011	17
21100801	2004	8
21100801	2011	8
21102601	2004	7

Code	No. table	Pos.
21102601	2011	7
21300710	2004	22
21300710	2011	4
23000120	2007	26
23000121	2007	26
23000227	2004	19
23000302	2007	10
23000302	2008	10
23000311	2004	18
23000311	2011	18
23000359	2000_3	10
23000368	2000_3	3
23000368	2000_31	3
23000368	2009	3
23000373	2008	22
23125009	2000_3	35
23125009	2000_31	35
23125021	2009	35
23125028	2009	35
23212035	4000	26
23220029	2007	9
23220029	2008	9
25105007	2004	11
25105007	2011	11
25135020	2008	23
25139001	2004	14
26220005	2007	4
26220005	2008	4
26220005	4000	4
27120130	2000_3	34
27120130	2000_31	34
27120130	2009	34
27350001	2000_3	15
27350001	2000_31	15
27350001	2009	15
27400001	2007	15
27400001	2008	15
27400001	4000	13
27400002	2004	20
32210001	2007	2
32210001	2008	2
32210001	4000	2
32239044	2007	7
32239044	2008	7
32239044	4000	7
32331926	1000_2	7
32331927	1000_2	7
32331936	1000_2	20
32331951	1000_2	18
32331952	1000_2	18
32331960	1000_2	4
32331961	1000_2	4
32332079	1000_2	14
32332082	1000_2	12
32332281	1000_2	3
32332282	1000_2	3
32910008	2011	27
33323004	2003	16
33323006	2003	16
34011102	2003	1
34020014	2003	2
34030110	1000_2	16
34030116	3000	15
34030971	3000	8
34041141	2004	26
34040149	2011	26

Code	No. table	Pos.
34040150	2004	26
34040150	2011	26
34070060	2000_3	19
34070060	2000_31	19
34070060	2009	19
34150026	3000	2
34200088	2000_3	4
34200088	2000_31	4
34200088	2009	4
34200103	3000	14
34200110	2000_31	6
34200110	2009	6
34200329	2003	18
34200329	3000	10
34200333	3000	3
34300073	3000	5
35002512	2003	10
35002513	2003	10
36220009	2007	21
36220009	2008	18
36220009	4000	21
36230001	2007	8
36230001	2008	8
36230001	4000	8
36301046	2004	15
36301046	2011	15
36301050	2007	25
36301050	4000	25
36301105	2007	14
36301105	2008	14
36301105	4000	12
36322003	2003	4
36402005	2004	24
36402005	2011	24
36404052	2000_3	20
36404052	2000_3	22
36404052	2000_31	20
36404052	2000_31	22
36404052	2009	20
36404052	2009	22
36404058	2007	18
36404058	4000	16
36930012	2003	17
36930016	2007	23
36930016	2008	20
36930016	4000	23
36930017	2007	27
36930017	2008	21
36930017	4000	27
36990004	2007	24
36990004	4000	24
36990078	2007	11
36990078	2008	11
37030408	1000_2	24
37030518	2004	12
37040611	2004	18
37040821	2003	15
37040830	2004	23
37040830	2011	23
37060413	2004	25
37060413	2011	25
37154212	1000_2	23
37154212	1000_2	5
37431600	2007	3
37431600	2008	3
37431600	4000	3
37510700	2007	6

Code	No. table	Pos.
37510700	2008	6
37510700	4000	6
38120284	1000_2	15
38120286	1000_2	19
38120327	2004	27
38120519	3000	12
38120578	1000_2	9
38120582	3000	9
38120591	1000_2	17
38123568	1000_2	10
38123665	2003	14
38123852	1000_2	10
38123933	1000_2	25
38123946	2000_3	7
38123946	2000_31	7
38123946	2009	7
38123947	2000_3	8
38123947	2000_31	8
38123947	2009	8
38221007	1000_2	6
38228002	2000_3	21
38228002	2000_31	21
38228002	2009	21
38228003	2000_3	11
38228003	2000_31	11
38228005	2009	11
39110035	2007	12
39110035	2008	12
39110035	4000	10
39110038	2007	22
39110038	2008	19
39110038	4000	22
40100005	2004	9
40100090	2004	10
40100102	2004	10
40100106	2004	9
40100106	2011	9
40100107	2004	10
40100107	2011	10
40100108	2004	10
40200005	2004	13
40200005	2011	13
42200121	1000_2	8
42200140	1000_2	13
69000243	2003	8
69000734	2003	6
69000735	2003	6
69000826	2003	7
69000827	2003	7
69000993	2003	5
69140006	2000_3	33
69140006	2000_31	33
69140006	2009	33
69140009	2000_3	25
69140009	2000_31	25
69140009	2009	25
69140010	2000_3	27
69140010	2000_31	27
69140010	2009	27
69140011	2000_3	28
69140011	2000_31	28
69140011	2009	28
69140014	2000_3	24
69140014	2000_31	24
69140014	2009	24
69140015	2000_3	24
69140015	2000_31	24

Code	No. table	Pos.
69140015	2009	24
69140016	2000_3	30
69140016	2000_31	30
69140016	2009	30
69140018	2000_3	31
69140018	2000_31	31
69140018	2009	31
69140019	2000_3	26
69140019	2000_31	26
69140019	2009	26
69140047	2000_3	29
69140047	2000_31	29
69140047	2009	29
69140048	2000_3	32
69140048	2000_31	32
69140048	2009	32
80134961	2003	3



Headquarters, Production Plant and R&D Centers

Rancilio Group s.p.a.

Viale della Repubblica 40
20010 Villastanza di Parabiago
Milano - Italy
Tel +39 0331 408200
Fax +39 0331 551437
www.ranciliogroup.com
info@ranciliogroup.com

Egro Suisse AG

Bahnhofstrasse 66
5605 Dottikon, Switzerland
Tel. +41 (0)56 616 95 95
Fax +41 (0)56 616 95 97
www.egrocoffee.com
info@egrocoffee.com

Worldwide Branch Locations

SPAIN

RancilioGroup Espana, s.a.
Gran Via de Carlos III, 84 3ª
Edificio Trade
08028 Barcelona - Spain
Tel. +34 902 884 275
Tel. +34 934 923 414
Fax +34 934 965 701
www.ranciliogroup.com
info-es@ranciliogroup.com

PORTUGAL

Rancilio Group Portugal Lda
Estrada da Falagueira nº 68 E
2700-365 Amadora-Lisboa - Portugal
Tel. +351 21 019 10 91
Fax +351 21 019 10 91

Rua Nova do Seixo 1282
4465-706 Leça do Balio-Porto - Portugal
Tel. +351 22 010 14 19
Fax +351 22 010 14 19
www.ranciliogroup.com
info-pt@ranciliogroup.com

GERMANY

Rancilio Group Deutschland GmbH
Talstrasse 27
97990 Weikersheim - Germany
Ph. +49 7934 99 29 30
Fax +49 7934 99 29 330
www.ranciliogroup.de
info-de@ranciliogroup.com

SWITZERLAND

Egro Suisse AG
Bahnhofstrasse 66
5605 Dottikon - Switzerland
Tel. +41 (0)56 616 95 95
Fax +41 (0)56 616 95 97
www.egrosuisse.ch
info@egrosuisse.ch

USA/CANADA

Rancilio Group North America Inc.
1340 Internationale Parkway / Suite 200
Woodridge, IL 60517 - U.S.A.
Ph: +1 630 914 7900
Fax: +1 630 914 7901
Toll Free: +1 877 726 2454
www.ranciliogroup.com
info@ranciliogroupna.com



 1300 263 107

 sparesinfo@ranciliogroup.com.au

 spares.ranciliogroup.com.au