

From SN 1788000

7.1 Gas Conversion Kits

- Australia only:

Model	Gas Type to Convert to:	
	Nat. Gas	LP Gas (Propane)
C3 -/F	245651	245652
C6 -/F	242686	242687
C9 -/F	242688	242689
C3D P/PF	245655	245656
C6 P/PF	242717	242718
C9 P/PF	242715	242716

□

- New Zealand only:

Model	Gas Type to Convert to:	
	Nat. Gas	LP Gas (NZ)
C3 -/F	245651	246679
C6 -/F	242686	246680
C9 -/F	242688	246681

- UK only:

Model	Gas Type to Convert to:	
	Natural Gas (G20)	Propane (G31)
C3 F	245684	245683
C6 F	242692	242693
C9 F	242694	242695

- XP only:

Model	Gas Type to Convert to:			
	Nat. Gas	LPG / Propane	Butane	Town Gas
C3 -/F	245651	245652	245653	245654
C6 -/F	242686	242687	242696	242697
C9 -/F	242688	242689	242698	242699
C3D P/PF	245655	245656	t.b.a.	246978
C6 P/PF	242717	242718	t.b.a.	246974
C9 P/PF	242715	242716	t.b.a.	246975

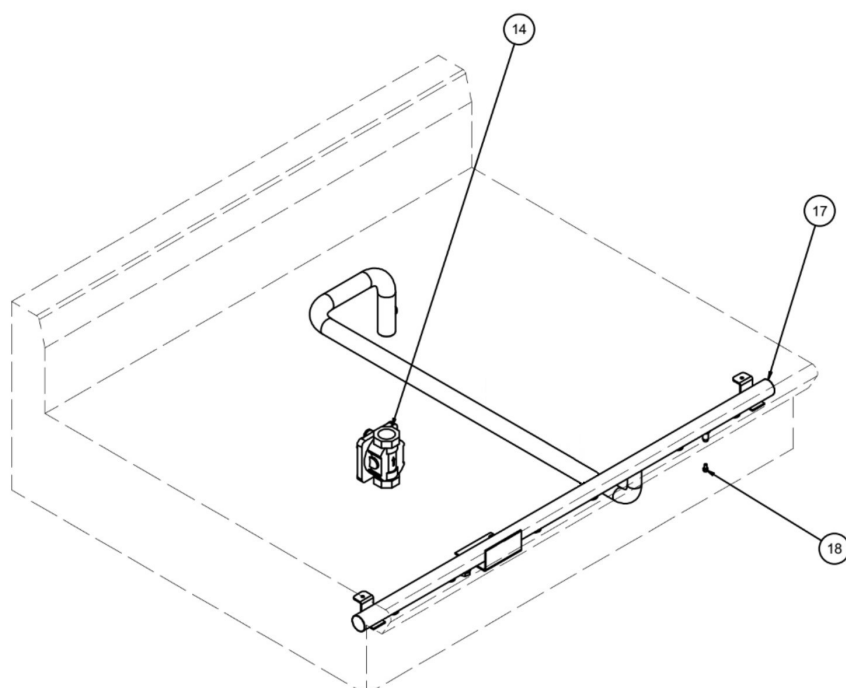
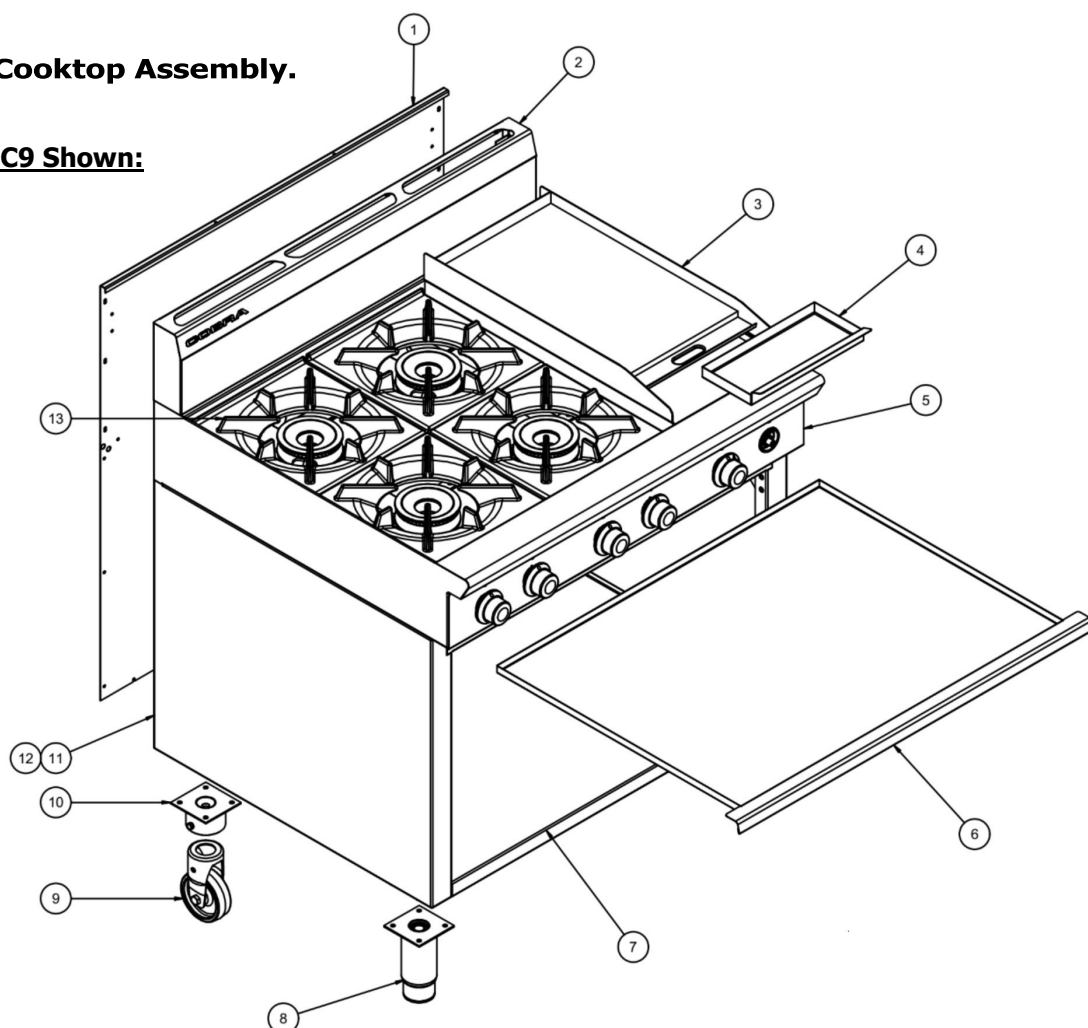
7.2 Regulators

Gas Type	Gas Regulators	
	Part No.	Description
Nat. Gas LPG Gas Butane	228531	¾" BSP F/F Convertible.
Town Gas	230185	¾" BSP F/F Adjustable.

8.1 Gas Cooktop Assembly

8.1.1. Cooktop Assembly.

Cooktop C9 Shown:



From SN 1788000

8.1.1. Cooktop Assembly - Parts List.

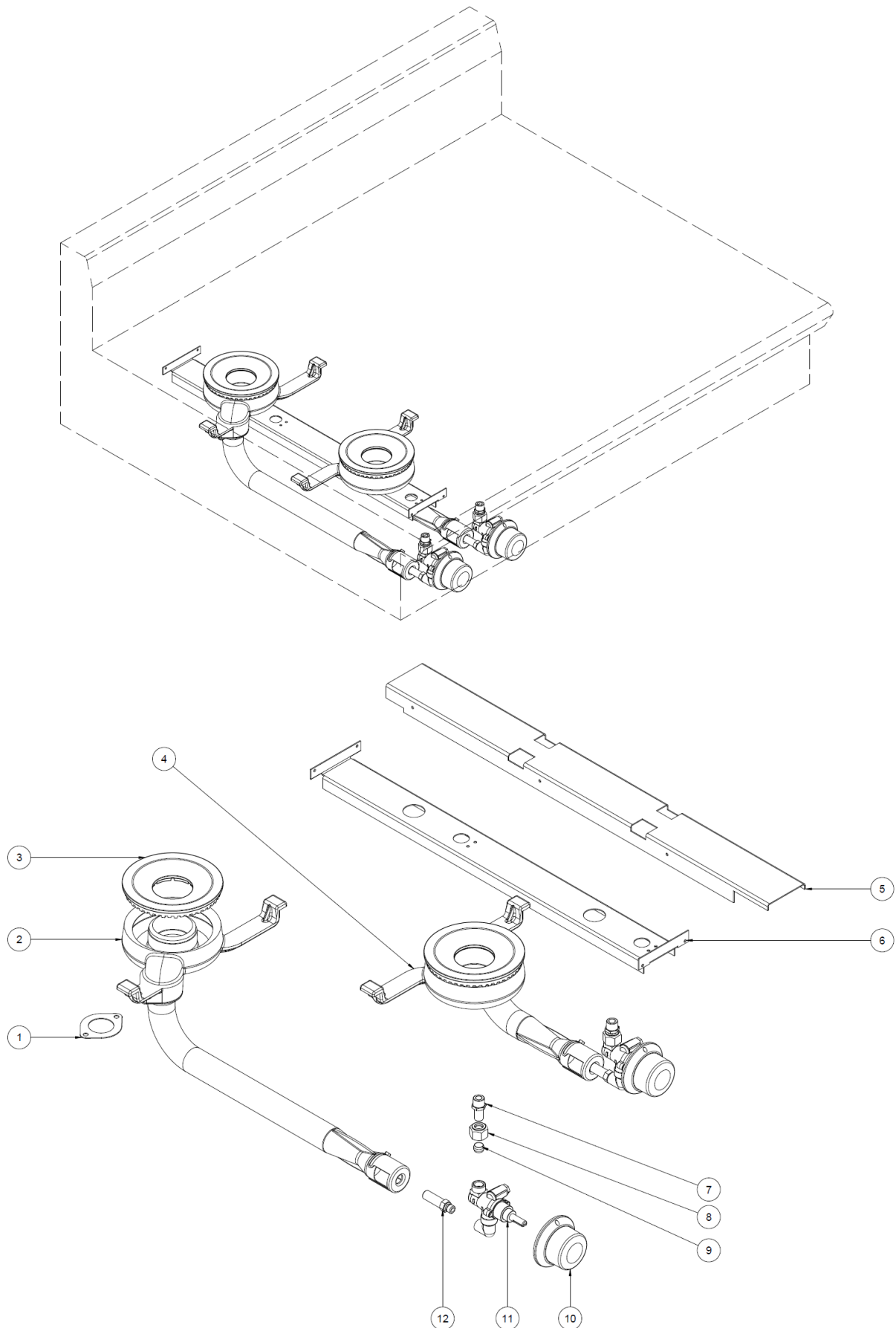
Item	Part No.	Description	*RPL
1	242520	BACK PANEL C6	D
	242521	BACK PANEL C9	D
2	242341	SPLASHBACK COBRA 600	D
	242216	SPLASHBACK COBRA 900	D
3	242328	GRIDDLE PLATE 900mm WA COBRA	D
	242329	GRIDDLE PLATE 600mm WA COBRA	D
	242330	GRIDDLE PLATE 300mm WA COBRA	D
4	230289	GREASE TRAY	C
5	242340	COOKTOP CONTROL PANEL COBRA 600	
	242252	COOKTOP CONTROL PANEL COBRA 900	
6	242339	SPIILL TRAY COBRA 600	C
	242258	SPIILL TRAY COBRA 900	C
7	242342	OPEN CABINET BASE PANEL COBRA 600	D
	242259	OPEN CABINET BASE PANEL COBRA 900	D
8	242352	LEG 150mm D63.5 M20 CW PLATE	D
9	229674	REAR ROLLER ASSEMBLY	D
10	229671	LEG RING PLATE THREADED	D
11	242345	CABINET SIDE PANEL LH	D
12	242346	CABINET SIDE PANEL RH	D
13	230014	POT STAND	C
14	228531	REGULATOR 3/4" CONVERTABLE	C
	230185	REGULATOR RV48LM-66-0024 (TOWNS)	C
17	243468	MANIFOLD - C6 (One Piece)	A
	243469	MANIFOLD - C9 (One Piece)	A
18	026060	PRESSURE TEST POINT SCREW	C

* Recommended Parts Level	
RPL	Number of units in service
A	1-5
B	5-10
C	10-50
D	50+

8 Exploded Part Diagrams

8.1.2. Cooktop - Open Burners (Standard Models - not UK).

From SN 1788000



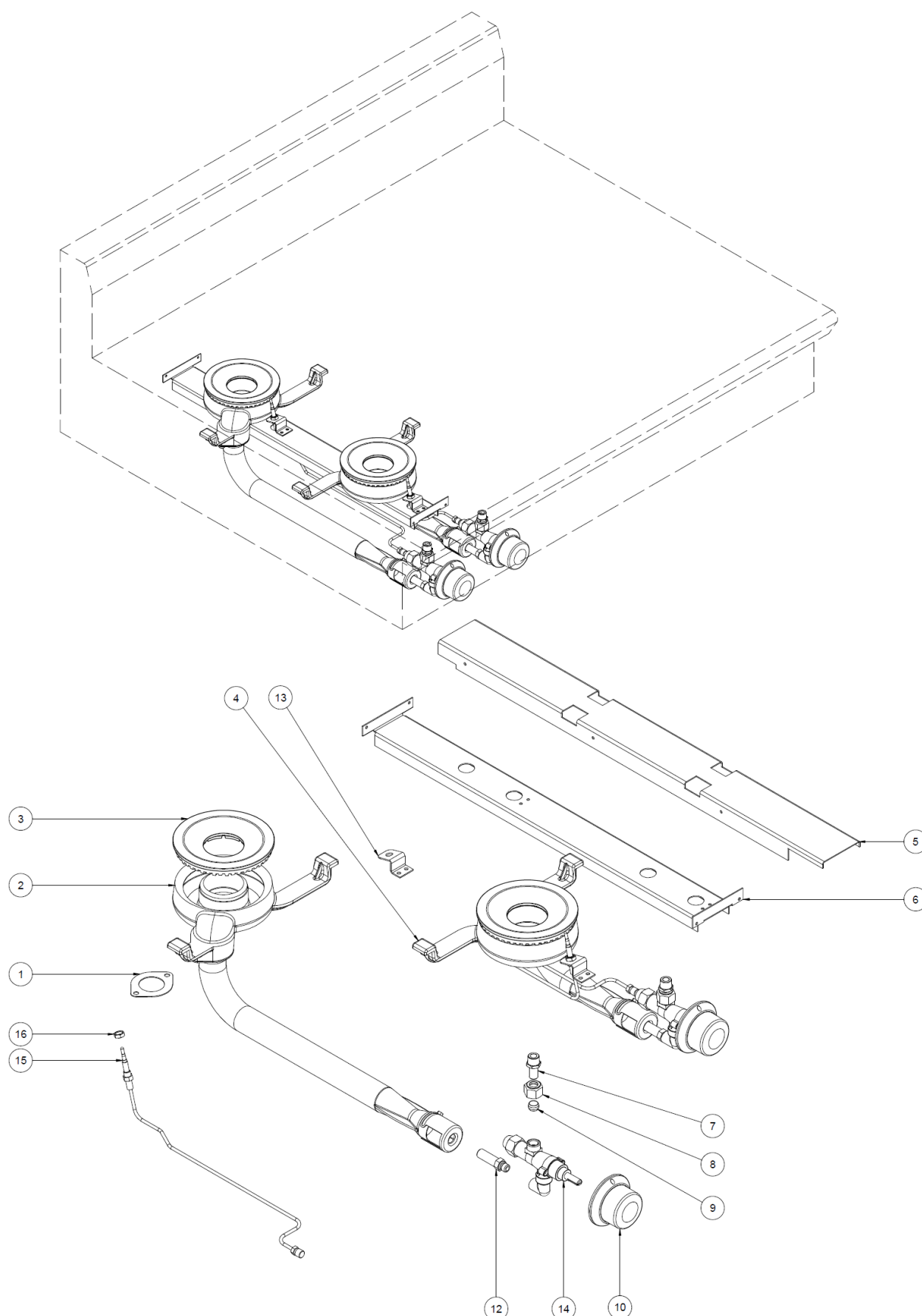
8.1.2. Cooktop - Open Burners - Parts List (Standard Models - not UK).

From SN 1788000

Item	Part No.	Description	*RPL
1	230637	GASKET BURNER ASSY.	C
2	230632	REAR BURNER.	C
3	230288	BURNER CAP.	C
4	230631	FRONT BURNER.	C
5	230088	POT STAND SUPPORT.	D
6	230486	MOUNTING RAIL.	D
7	017802	INLET SPIGOT - 10mm.	D
8	017804	NUT - 10mm STEEL.	D
9	017803	OLIVE 10mm BRASS.	D
10	242361	KNOB COBRA 8mm GAS F.	B
11	018680	GAS CONTROL PINTOSI 20N ('Std' Models Only).	A
12	031125	INJECTOR 1.25mm (LPG AU / XP).	C
	031120	INJECTOR 1.20mm (LPG NZ).	C
	031210	INJECTOR 2.10mm (NAT AU / NZ / XP).	C
	031120	INJECTOR 1.20mm (BUTANE).	C
	031380	INJECTOR 3.80mm (TOWN GAS).	C

* Recommended Parts Level	
RPL	Number of units in service
A	1-5
B	5-10
C	10-50
D	50+

8.1.3. Cooktop - Open Burners (Flame Failure Models).



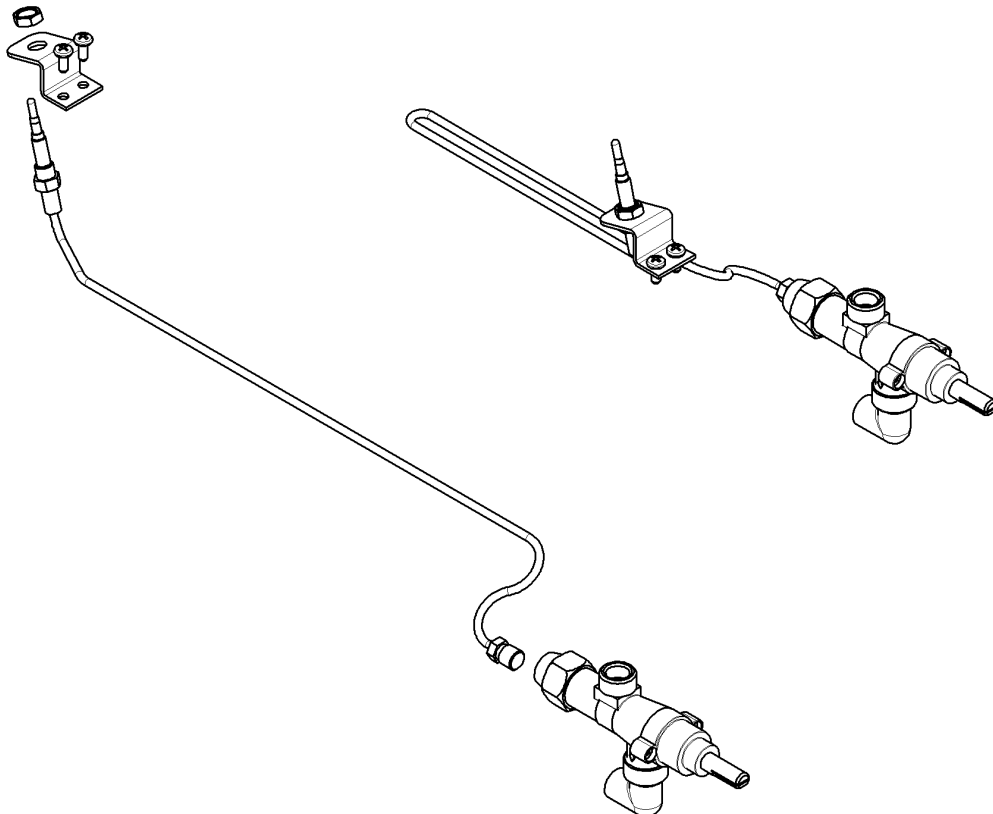
8.1.3. Cooktop - Open Burners - Parts List (Flame Failure Model).

From SN 1788000

Item	Part No.	Description	*RPL
1	230637	GASKET BURNER ASSY.	C
2	230631	FRONT BURNER ASSY.	C
3	230632	REAR BURNER ASSY.	C
4	230288	BURNER CAP.	C
5	230088	POT STAND SUPPORT.	D
6	230486	MOUNTING RAIL.	C
7	017802	INLET SPIGOT - 10mm.	D
8	017804	NUT - 10mm STEEL.	D
9	017803	OLIVE 10mm BRASS.	D
10	242361	KNOB COBRA 8mm GAS FF	B
12	031125	INJECTOR 1.25mm (LPG AU / XP).	C
	031120	INJECTOR 1.20mm (LPG NZ / UK).	C
	031210	INJECTOR 2.10mm (NAT AU / NZ / XP).	C
	031190	INJECTOR 1.90mm (NAT UK).	C
	031120	INJECTOR 1.20mm (BUTANE).	C
	031380	INJECTOR 3.80mm (TOWN GAS).	C
13	230670	THERMOCOUPLE BRACKET.	D
14	231560	GAS VALVE 20S c/w ELBOW.	A
15	230671	THERMOCOUPLE 500mm.	A
16	024573	THERMOCOUPLE SLEEVE NUT M8 x 1.	D
---	242702	BURNER FLAME FAILURE (F) MODULE KIT.	

* Recommended Parts Level	
RPL	Number of units in service
A	1-5
B	5-10
C	10-50
D	50+

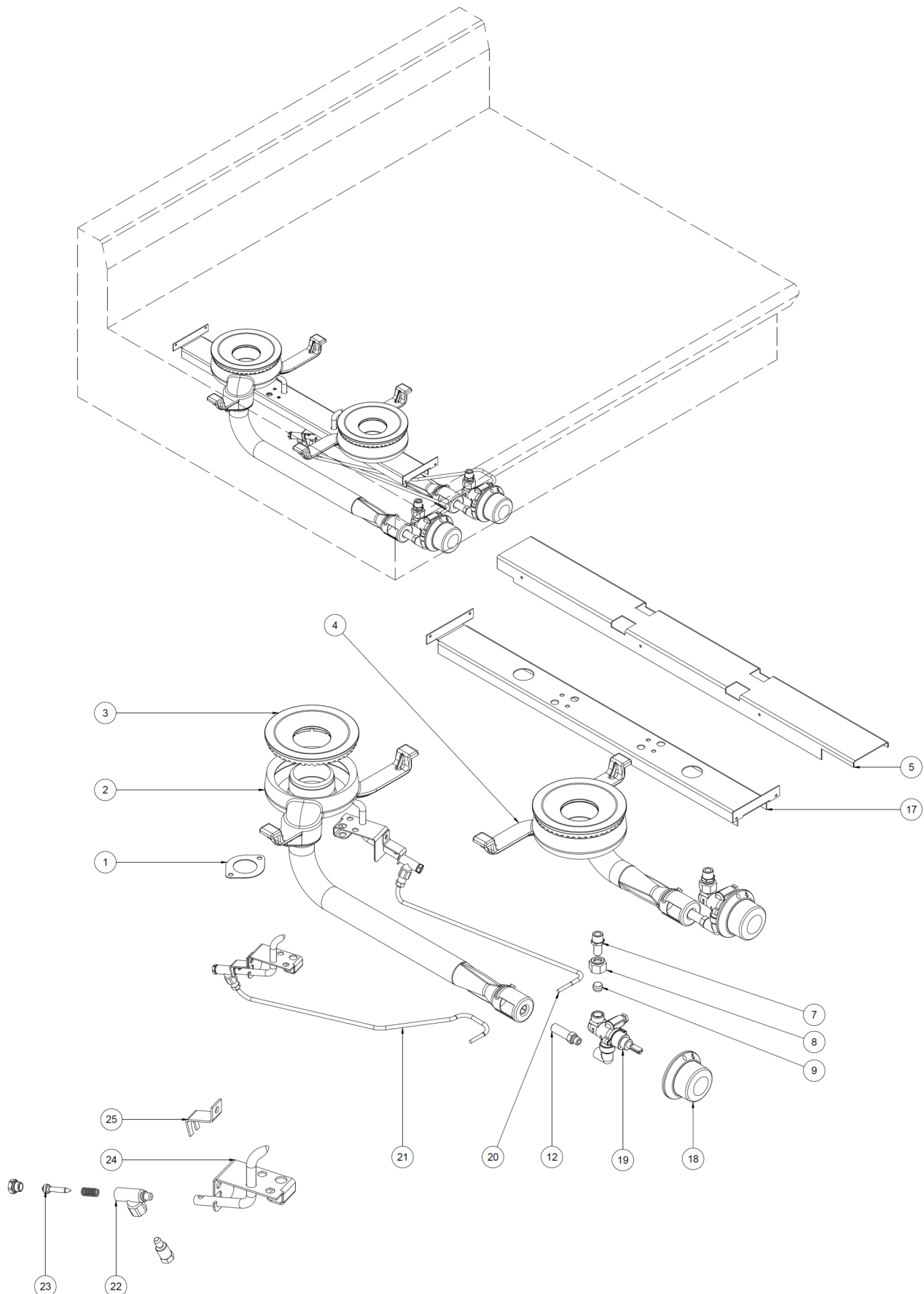
8.1.4. Cooktop - Open Burners Flame Failure Conversion Kit (Part No.231565).



8 Exploded Part Diagrams

8.1.5. Cooktop - Open Burners (Pilot Only - not UK).

From SN 1788000



8.1.5. Cooktop - Open Burners - Parts List (Pilot Only - not UK).

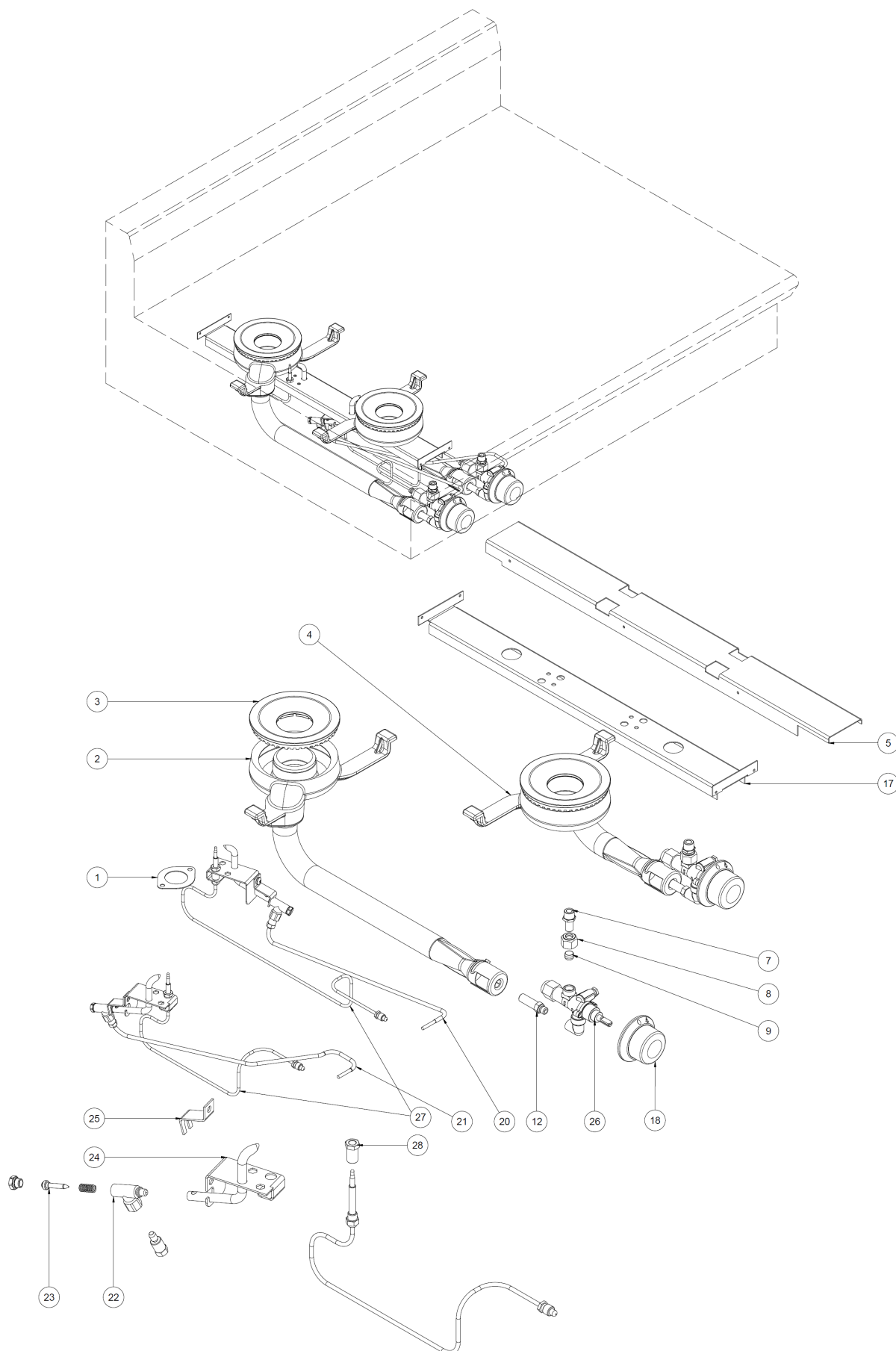
From SN 1788000

Item	Part No.	Description	*RPL
1	230637	GASKET BURNER ASSY.	C
2	230632	REAR BURNER.	C
3	230288	BURNER CAP.	C
4	230631	FRONT BURNER.	C
5	230088	POT STAND SUPPORT.	D
7	017802	INLET SPIGOT - 10mm.	D
8	017804	NUT - 10mm STEEL.	D
9	017803	OLIVE 10mm BRASS.	D
12	031125	INJECTOR 1.25mm (LPG AU / XP).	C
	031120	INJECTOR 1.20mm (LPG NZ).	C
	031210	INJECTOR 2.10mm (NAT AU / NZ / XP).	C
	031120	INJECTOR 1.20mm (BUTANE).	C
	031380	INJECTOR 3.80mm (TOWN GAS).	C
17	242004	MOUNTING RAIL. P/PF	D
18	242362	KNOB COBRA 8mm GAS P/PF.	B
19	242116	GAS VALVE A50 c/w ELBOW (Pilot Models Only).	A
20	242155	FLEX TUBE ST/ST 304 Ø 4mm x 450mm	
21	236225	FLEX TUBE ST/ST 304 Ø 4mm x 630mm	
22	229880	PILOT ASSY NAT	
23	026134	PILOT INJECTOR SPUD Ø 0.30mm (NAT)	
	026136	PILOT INJECTOR SPUD Ø 0.20mm (LPG)	
24	236213	PILOT TUBE WA	
25	242148	PILOT INJECTOR BASE CLAMP	

* Recommended Parts Level	
RPL	Number of units in service
A	1-5
B	5-10
C	10-50
D	50+

8 Exploded Part Diagrams

8.1.6. Cooktop - Open Burners (Pilot & Flame Failure - not UK). From SN 1788000

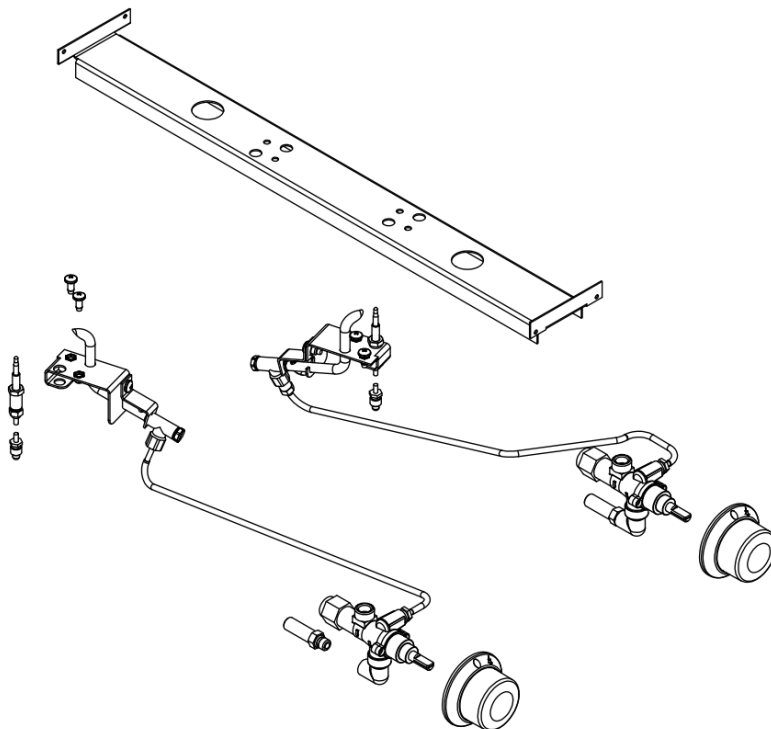


From SN 1788000

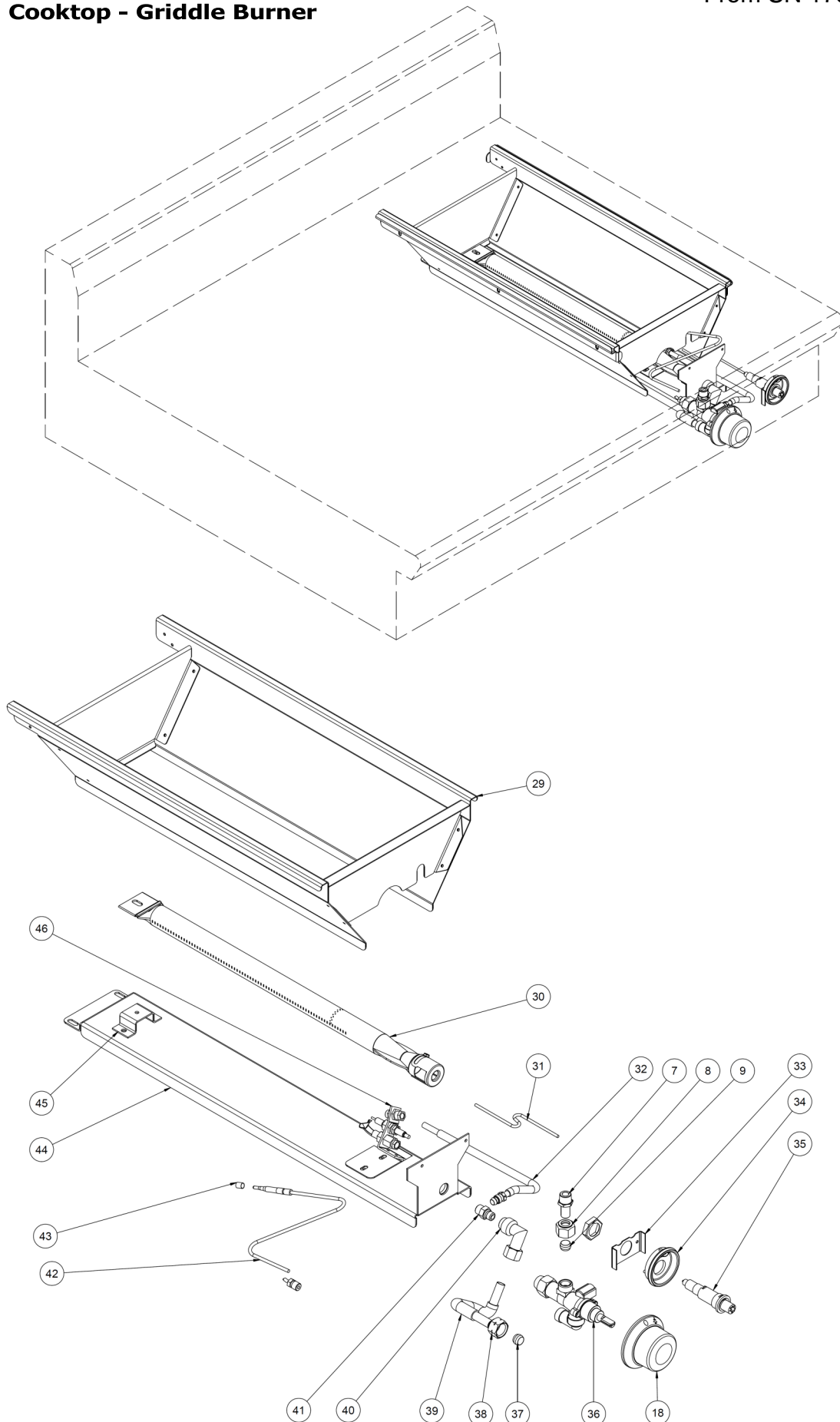
8.1.6. Cooktop - Open Burners - Parts List (Pilot & Flame Failure - not UK).

Item	Part No.	Description	*RPL
1	230637	GASKET BURNER ASSY.	C
2	230631	FRONT BURNER.	C
3	230632	REAR BURNER.	C
4	230288	BURNER CAP.	C
5	230088	POT STAND SUPPORT.	D
7	017802	INLET SPIGOT - 10mm.	D
8	017804	NUT - 10mm STEEL.	D
9	017803	OLIVE 10mm BRASS.	D
12	031125	INJECTOR 1.25mm (LPG AU / XP).	C
	031120	INJECTOR 1.20mm (LPG NZ).	C
	031210	INJECTOR 2.10mm (NAT AU / NZ / XP).	C
	031120	INJECTOR 1.20mm (BUTANE).	C
	031380	INJECTOR 3.80mm (TOWN GAS).	C
17	242004	MOUNTING RAIL. P/PF	D
18	242362	KNOB COBRA 8mm GAS P/PF.	B
20	242155	FLEX TUBE ST/ST 304 Ø 4mm x 450mm	
21	236225	FLEX TUBE ST/ST 304 Ø 4mm x 630mm	
22	229880	PILOT ASSY NAT	
23	026134	PILOT INJECTOR SPUD Ø 0.30mm (NAT)	
	026136	PILOT INJECTOR SPUD Ø 0.20mm (LPG)	
24	236213	PILOT TUBE WA	
25	242148	PILOT INJECTOR BASE CLAMP	
26	242117	GAS VALVE A60 c/w ELBOW (Pilot / Flame Failure Models Only).	A
27	235710	THERMOCOUPLE M9 x 1 600mm	
28	236067	PILOT MODULE THERMOCOUPLE NUT	
----	242705	BURNER FLAME FAILURE (PF) MODULE KIT.	

* Recommended Parts Level	
RPL	Number of units in service
A	1-5
B	5-10
C	10-50
D	50+

8.1.7. Cooktop - Open Burners Pilot / Flame Failure Conversion Kit (Part No. 242707).

8.1.8. Cooktop - Griddle Burner



From SN 1788000

8.1.8. Cooktop - Griddle Burner - Parts List (Cont'd)

Item	Part No.	Description	*RPL
7	017802	INLET SPIGOT - 10mm.	D
8	017804	NUT - 10mm STEEL.	D
9	017803	OLIVE 10mm BRASS.	D
18	242362	KNOB COBRA 8mm GAS	B
29	230213	GRIDDLE REFLECTOR ASSY.	D
30	014105	GRIDDLE BURNER.	C
31	228047	HT LEAD 250mm.	A
32	230319	FLEX TUBE ST/ST 304 Ø ¼" x 12".	D
	017805	NUT PILOT ¼".	
	017806	OLIVE PILOT ¼" BRASS.	
33	228223	PIEZO CLAMP.	
34	228010	PIEZO HOUSING.	
35	227508	PIEZO SIT.	A
36	227403	GAS VALVE 21S CW ⅜" ELBOW.	A
37	227559	OLIVE ⅜".	D
38	227560	NUT ⅜".	D
39	022686	FLEXTUBE DORMONT T6.	D
40	229511	INJECTOR ELBOW x ⅜" T.	D
41	032120	INJECTOR 1.20mm (BUTANE).	C
	032125	INJECTOR 1.25mm (LPG / PROPANE UK).	C
	032200	INJECTOR 2.00mm (NAT).	C
	032340	INJECTOR 3.40mm (TOWN GAS).	C
42	019428	THERMOCOUPLE 320mm M9 x 1.	A
43	018743	THERMOCOUPLE SPACER.	C
44	227178	GRIDDLE CONVERTABLE BURNER SUPPORT RAIL	D
45	227765	BURNER MOUNTING BRACKET.	D
46	019215K	PILOT BURNER KIT.	A
	018744	ELECTRODE (Included in Kit 109215K).	C
	026488	PILOT INJECTOR - 0.35mm (NAT) (Included in Kit 109215K).	A
	019217	PILOT INJECTOR - 0.23mm (LPG / BUTANE / PROPANE UK) (Included in Kit 109215K).	A
	018067	PILOT INJECTOR - 0.60mm (TOWN GAS). (Not included in Kit 109215K).	A

* Recommended Parts Level	
RPL	Number of units in service
A	1-5
B	5-10
C	10-50
D	50+