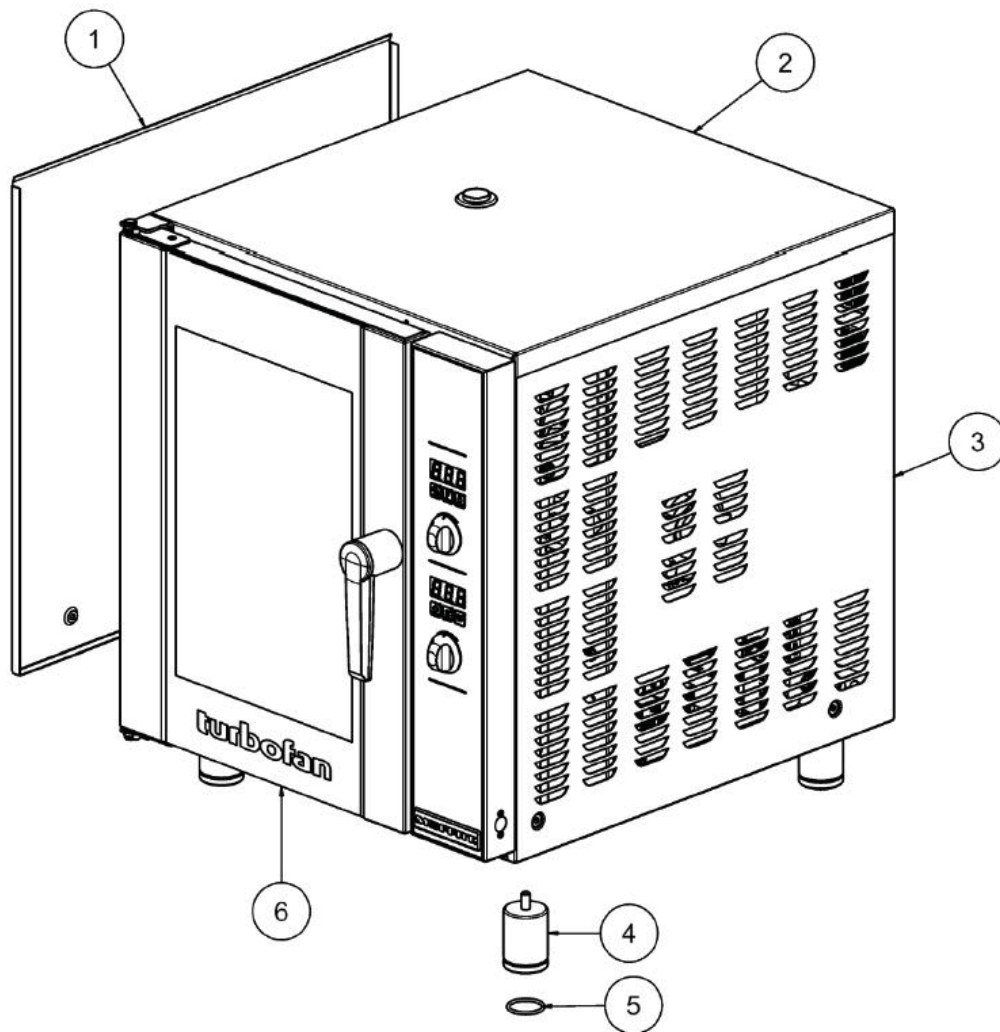


Outer Assembly

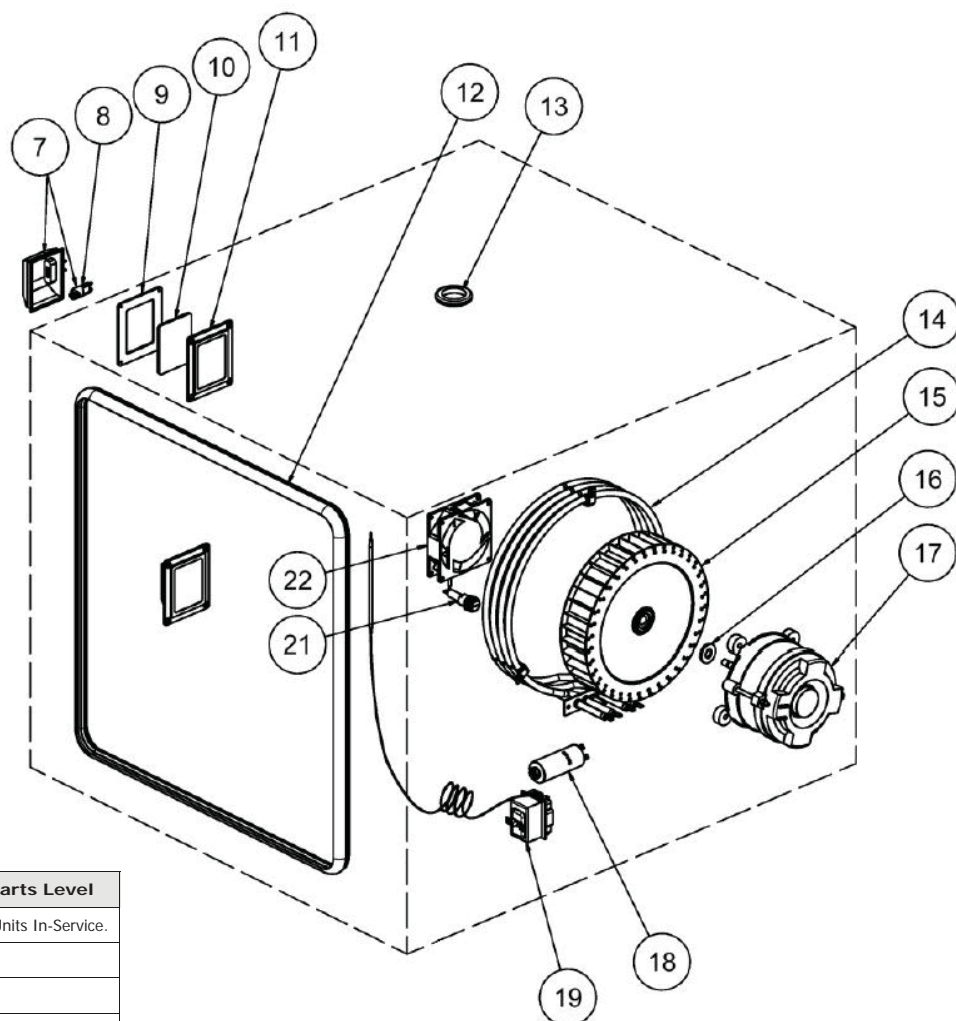


ITEM	PART No.	DESCRIPTION	* RPL
1	235633	SIDE COVER LH	D
2	233632	TOP PANEL	D
3	235634	SIDE COVER RH	D
4	232379	ADJUSTABLE LEG 3" / 76mm	D
5	232380	FOOT O-RING	C
6	235666	DOOR ASSEMBLY (COMPLETE)	C

* Recommended Parts Level	
RPL	Number of Units In-Service.
A	1-5
A+B	5-10
A+B+C	10-50
A+B+C+D	50+

9 Exploded Parts Listings

Elements & Motor

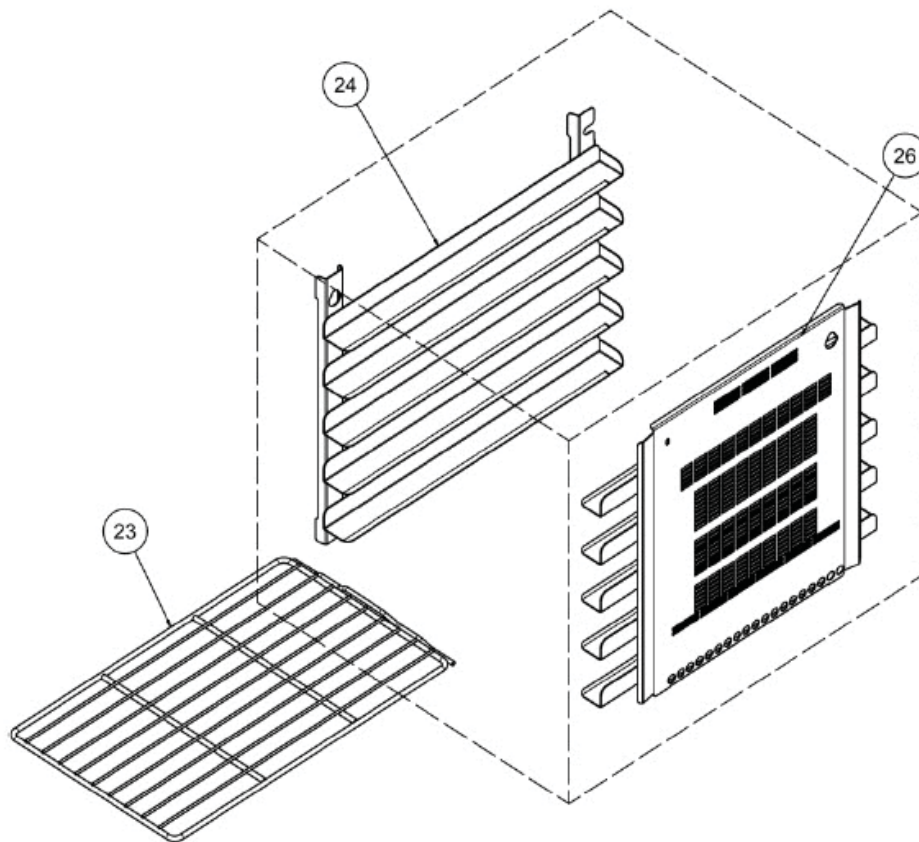


* Recommended Parts Level

RPL	Number of Units In-Service.
A	1-5
A+B	5-10
A+B+C	10-50
A+B+C+D	50+

ITEM	PART No.	DESCRIPTION	*RPL
7	236214	LAMP HOLDER (Bulb Included).	B
8	231814	LAMP BULB G9/25W 230V HALOGEN.	A
9	021354	GASKET.	A
10	021352	GLASS LENS.	A
11	021353	SUPPORT FRAME.	A
12	235615	OVEN SEAL	A
13	010761	GROMMET 1½" RUBBER	D
14	236109K	OVEN ELEMENT KIT 5800W 240V (Item 236264 is supplied with this Kit).	B
	236110K	OVEN ELEMENT KIT 5800W 220V (Item 236264 is supplied with this Kit).	B
	236264	ELEMENT GASKET (not shown)	B
15	234138	FAN 8½" / 220mm FOR 50 Hz	C
----	235398	FAN PULLER / TIGHTENER (not shown)	C
16	235610	MOTOR SHAFT SEAL	B
17	235625	FAN MOTOR 2 SPEED.	C
18	236053	MOTOR CAPACITOR 6.3µF 60HZ ONLY	B
	236054	MOTOR CAPACITOR 8µF 50HZ ONLY	B
19	234821	OVERTEMP THERMOSTAT 355°C / 670°F, 3 POLE.	A
21	234802	FUSE HOLDER 16A 250V (not Korea)	D
	234803	FUSE 10A (not Korea)	A
22	234460	COOLING FAN 92x92x25 230V 50/60Hz	B

Oven Racks



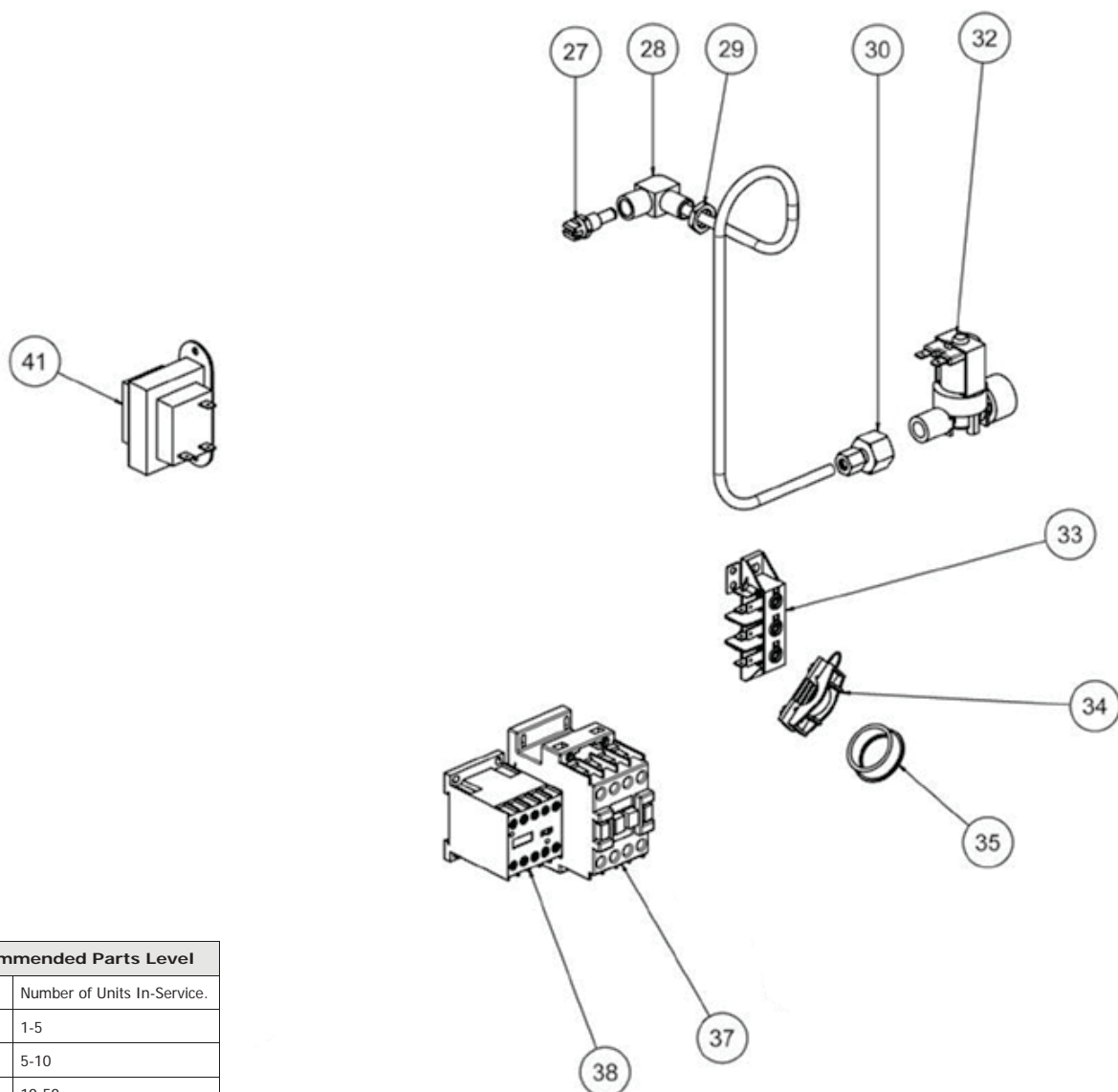
* Recommended Parts Level

RPL	Number of Units In-Service.
A	1-5
A+B	5-10
A+B+C	10-50
A+B+C+D	50+

ITEM	PART No.	DESCRIPTION	*RPL
23	236057	OVEN RACK E33 1 x 1 GN	D
24	237109	SIDE RACK LH 5 TRAY GN TRAY	D
	235811	SIDE RACK LH 5 TRAY US 1/2 PAN	D
26	237015	SIDE RACK RH 5 TRAY GN TRAY	D
	235813	SIDE RACK RH 5 TRAY US 1/2 PAN	D

9 Exploded Parts Listings

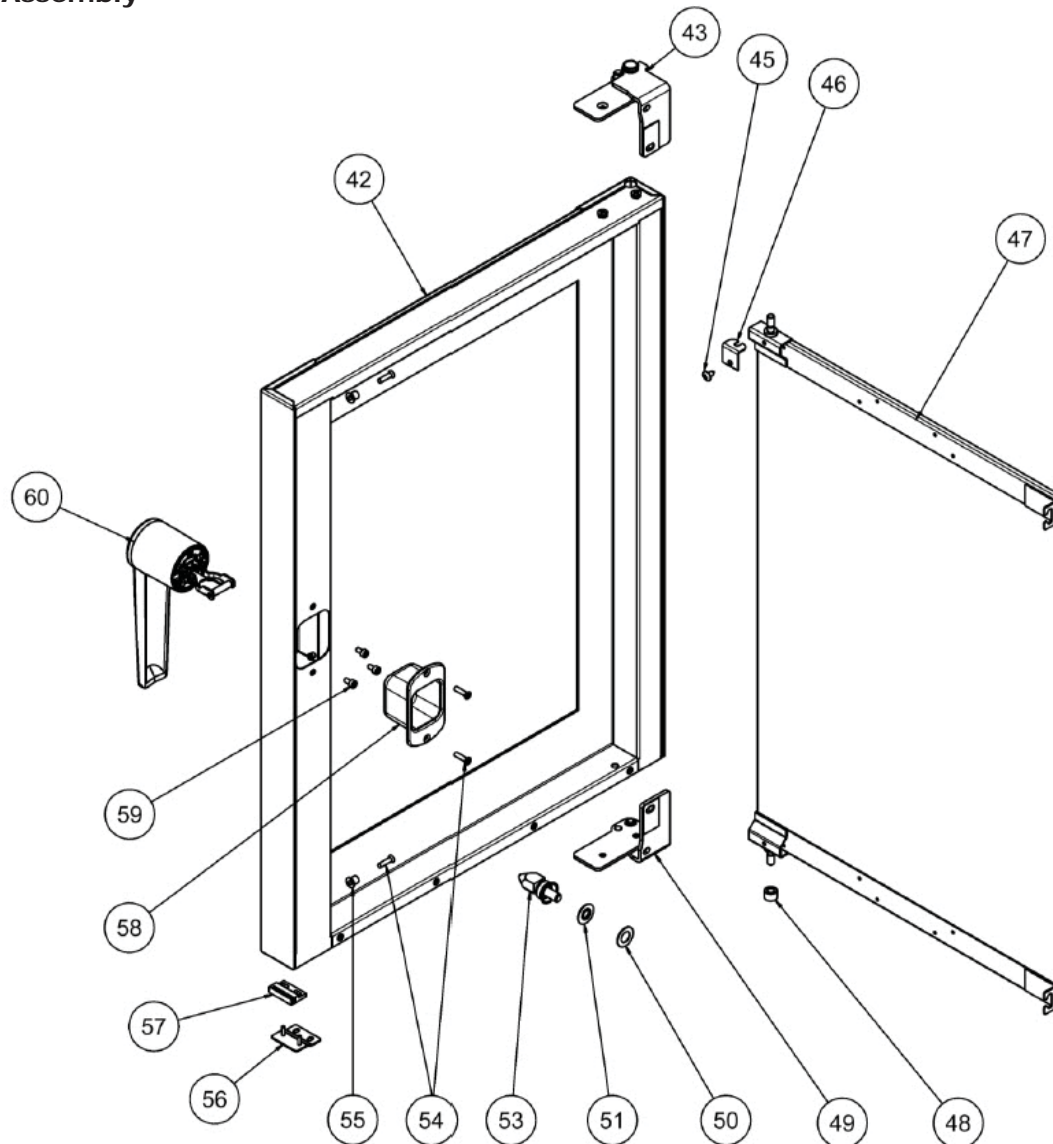
Gear Plate



* Recommended Parts Level	
RPL	Number of Units In-Service.
A	1-5
A+B	5-10
A+B+C	10-50
A+B+C+D	50+

ITEM	PART No.	DESCRIPTION	*RPL
27	021057	SPRAY NOZZLE ASSEMBLY	C
28	236739	WATER TUBE	D
29	013215	BACK NUT BRASS 1/4" BSP	D
30	020869	FEMALE CONNECTOR 3/8" BSP TO 1/4" COMP	D
32	020851	WATER SOLENOID	A
Not Shown	025922	ADAPTOR BRASS 3/4" BSP. (USA / CANADA ONLY)	D
	021527	WASHER RUBBER. (USA / CANADA ONLY)	A
33	026160	TERMINAL BLOCK	D
34	026161	CABLE CLAMP	D
35	019213	SNAP BUSH Ø31.5	D
37	231738	CONTACTOR 25A 3P+1NO 230V50/60 (HEATING)	B
38	231742	CONTACTOR MINI (MOTOR HI-SPEED)	B
41	234429	TRANSFORMER 208 / 240V x 12VAC SEC 20VA	B

Door Assembly

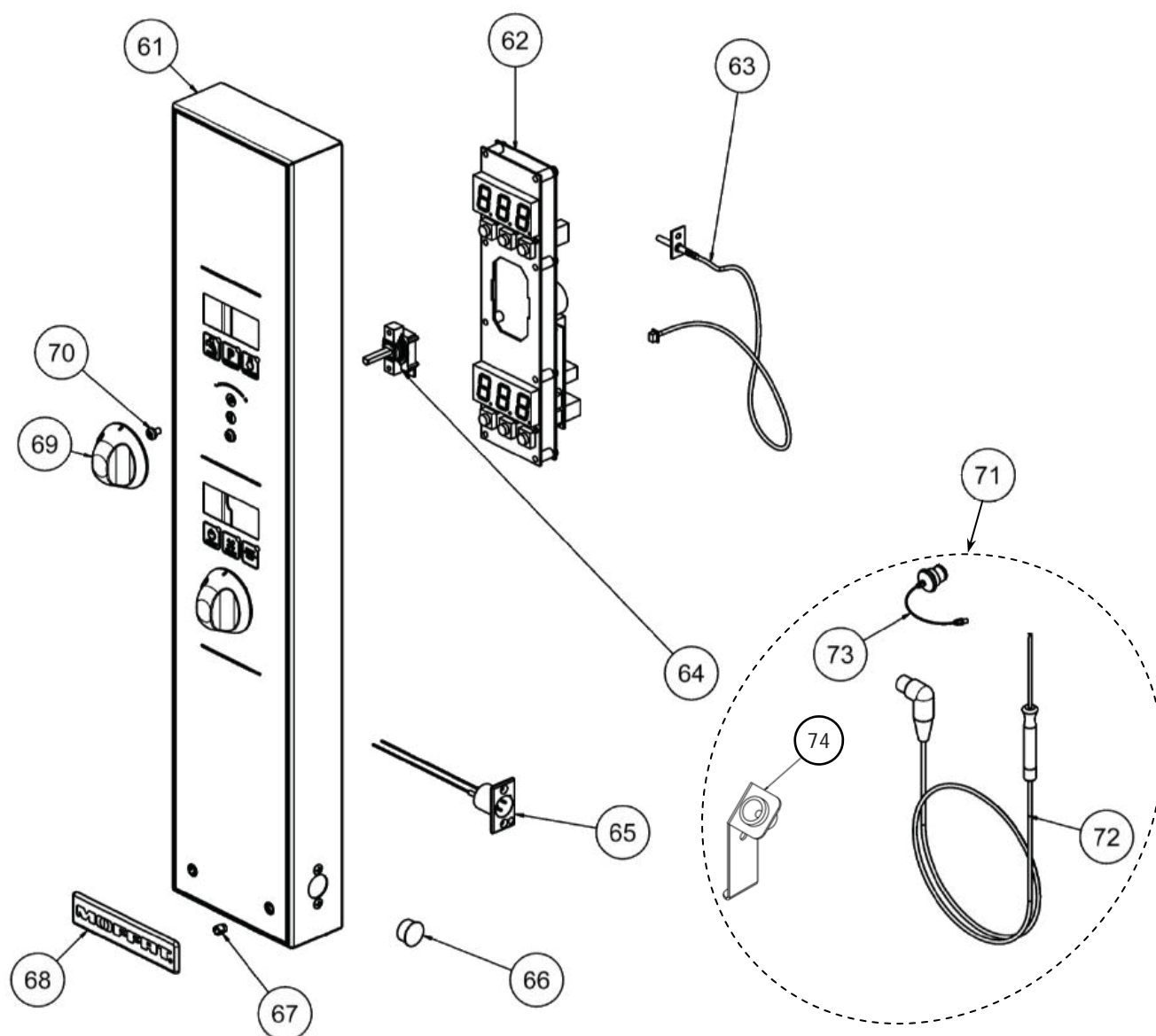


ITEM	PART No.	DESCRIPTION	* RPL
42	236203	DOOR OUTER GLASS ASSEMBLY	C
43	235851	DOOR HINGE ASSEMBLY TOP	B
45	041045	SCREW 8 x 3/8" TRUSS HD PHL NP	D
46	234779	INNER GLASS RETAINING CLIP	C
47	235652	DOOR INNER GLASS ASSY	C
48	234767	INNER GLASS PIVOT SPACER	D
49	235852	DOOR HINGE ASSEMBLY BOTTOM	B
50	235105	DOOR STRIKE ESCUTCHEON WASHER	C
51	236014	DOOR STRIKE PIN ESCUTCHEON	C
53	231804	SINGLE STEP LOCKING DOG	C
----	231805	DUAL STEP LOCKING DOG (Optional)	C
54	041444	SCREW M4 x 16 CSK POSI HD NP	D
55	236019	INNER GLASS LATCHING BUSH	D
56	236218	ACTUATOR MAGNET BRACKET STUDDER	C
57	235849	ACTUATOR MAGNET PIC MSM-328	C
58	236198	DOOR LATCH COVER	B
59	748056	SCREW M4 x 8 SKT HD CAP	D
60	235859	DOOR HANDLE ASSEMBLY	D

* Recommended Parts Level	
RPL	Number of Units In-Service.
A	1-5
A+B	5-10
A+B+C	10-50
A+B+C+D	50+

9 Exploded Parts Listings

Controller



Item	Part No.	Description	*RPL
61	235790	CONTROL PANEL LAMINATED (2 SPEED)	D
62	236256	DIGITAL CONTROLLER KIT (2 SPEED)	B
63	234434	OVEN TEMPERATURE PROBE	B
64	234450	ENCODER (MOMENTARY)	B
65	235846	PANEL SOCKET CORE TEMP - D SERIES	C
66	236192	DOME PLUG 15.9MM	D
67	228132	TUBE CLIP #5	D
68	233865	BADGE MOFFAT	D
69	234447	KNOB TURBOFAN INDEX	D
70	041425	SCREW M4 X 6 PAN HD PHIL NP	D
71	236060	CORE TEMP PROBE KIT (which includes:-)	B
72	235845	CORE TEMP PROBE (PT1000)	B
73	235847	DUST CAPE CORE TEMP SOCKET	D
74	236486	CORE TEMP PROBE HOLDER	C
Not Shown	748019	SCREW M4 x 10 TAPTITE PAN POZI ZP	D

* Recommended Parts Level	
RPL	Number of Units In-Service.
A	1-5
A+B	5-10
A+B+C	10-50
A+B+C+D	50+