

AL

Parts Manual



WASHTECH[®]
PROFESSIONAL WASH SYSTEMS

MOFFAT[®]
www.moffat.com.au



SPARES
WEBSTORE spares.moffat.com.au



1300 263 107



sparesinfo@moffat.com.au

Spare Parts AL-4

DESCRIPTION	PART NO	REC. STOCK
Controls & Indicators		
Digital Temperature Sensor 500mm	600 30429	1
Digital Temperature Sensor 1000mm	600 30430	1
Door Switch	600 30183	1
Loom LCD Interface 0.7m	600 30425	1
Pressure Switch Break Tank & Drain	400 10214	1
Pressure Switch Fill	400 10213	1
Electronic Controller Kit PCBA	Refer to Note 1 in assembly diagrams	1
Keypad Membrane Kit	KIT0440047	1
LCD Board with Spaces Kit	Refer to Note 2 in assembly drawings	1
Door		
Door Handle Replacement Assembly	352 10083	
Door Spring	326 30019	
Door Stay Mount	400 30225	
Heating Components		
Over Temperature Thermostat	600 30088	1
Rinse Element 2 x 3KW (before s/n 144831)	3007	1
Rinse Element 2 x 3KW (from s/n 144831)	600 30496	1
Wash Element 2.5KW	600 30159	1
Hoses		
Hose Drain Pump 2.5m	600 60105	1
Hose Drain Pump Inlet/Outlet	6197	430mm
Pressure Switch Hose	3067	500mm
Wash Pump Inlet Hose	C200359	1
Wash Pump Outlet Hose	61941	175mm
Lower Wash Connection Hose	6195	250mm
Pumps & Solenoids		
Detergent Peristaltic Pump	600 30094	
Detergent Pump Hose	600 30148	1
Detergent Squeeze Tube	600 30134	2
Drain Pump	600 60102	1
Rinse Aid Injector	600 30324	
Rinse Aid Peristaltic Pump Adjustable	600 30480	
Rinse Pump (before s/n 157060)	600 30508	1
Rinse Pump (from s/n 157060)	600 30400	1
Solenoid Valve	3342	1
Wash Pump	600 30412	1

Drain Components

s/n 134930 – 138459:	
Drain Collector Assembly	352 10032
Filter Basket Assembly	352 10033
Filter Tray Assembly	352 10031

s/n 138460 – 157059	
Drain Collector Assembly	352 10032
Filter Basket Assembly	352 10078
Filter Tray Assembly	352 10080

s/n 157060 onward	
Filter Basket Assembly	352 10078
Filter Tray Assembly	352 10092
Sump Filter	352 10090
Sump Plate	352 10091

Wash/Rinse Components

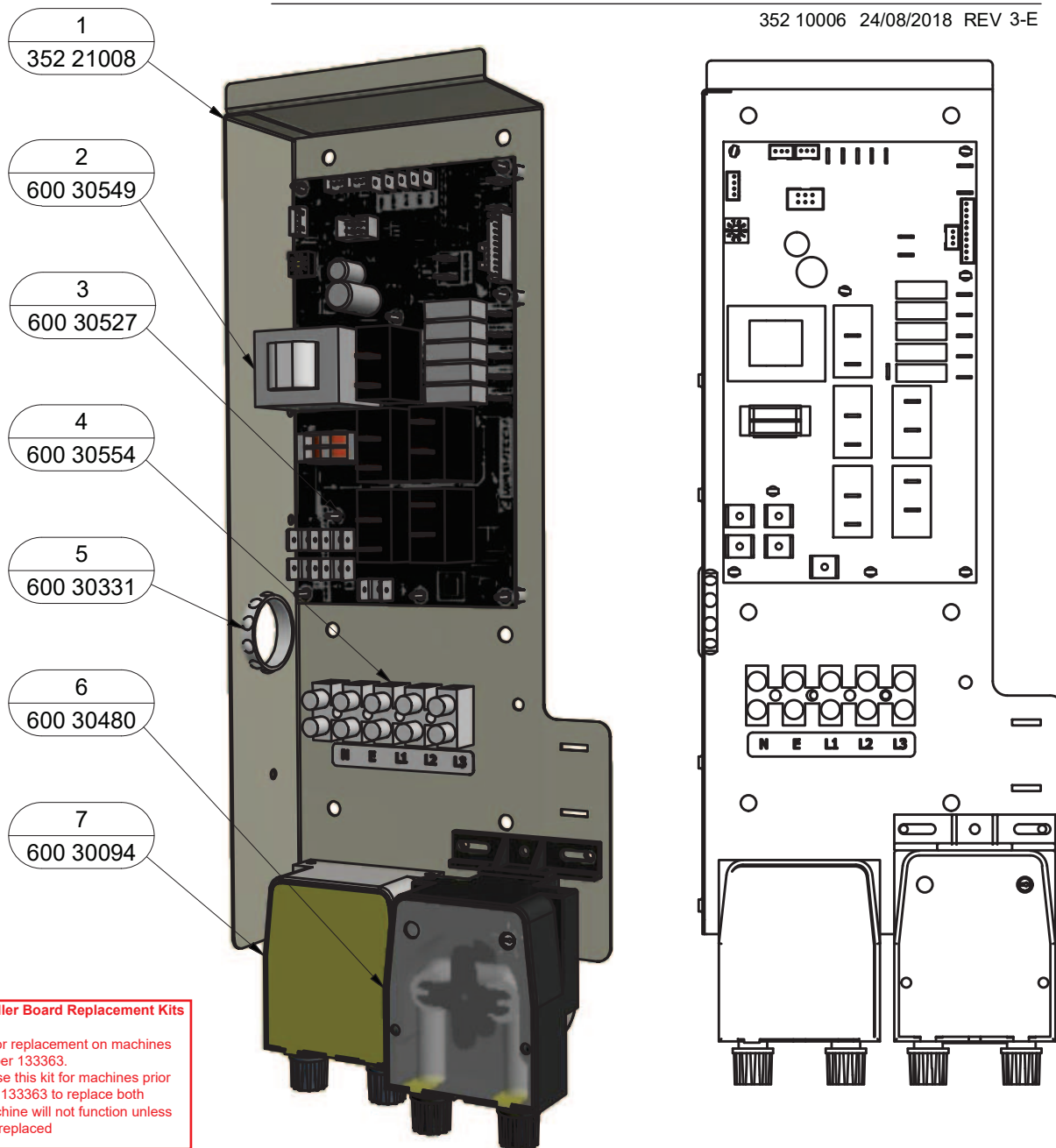
Rinse Arm Assy & Spindle (before s/n 145541)	400 10244
Rinse Arm Assy (from s/n 145541)	400 10239
Wash Arm Assy	400 10077
Wash Arm Bush	C190621
Wash Lock Nut	280409C
Wash Spindle (from s/n 145541)	400 30362

Note: For more parts look in the section “Assembly Diagrams”

Assembly Diagrams

AL(4) WIRING TRAY ASSY

352 10006 24/08/2018 REV 3-E



Note 1 - Controller Board Replacement Kits

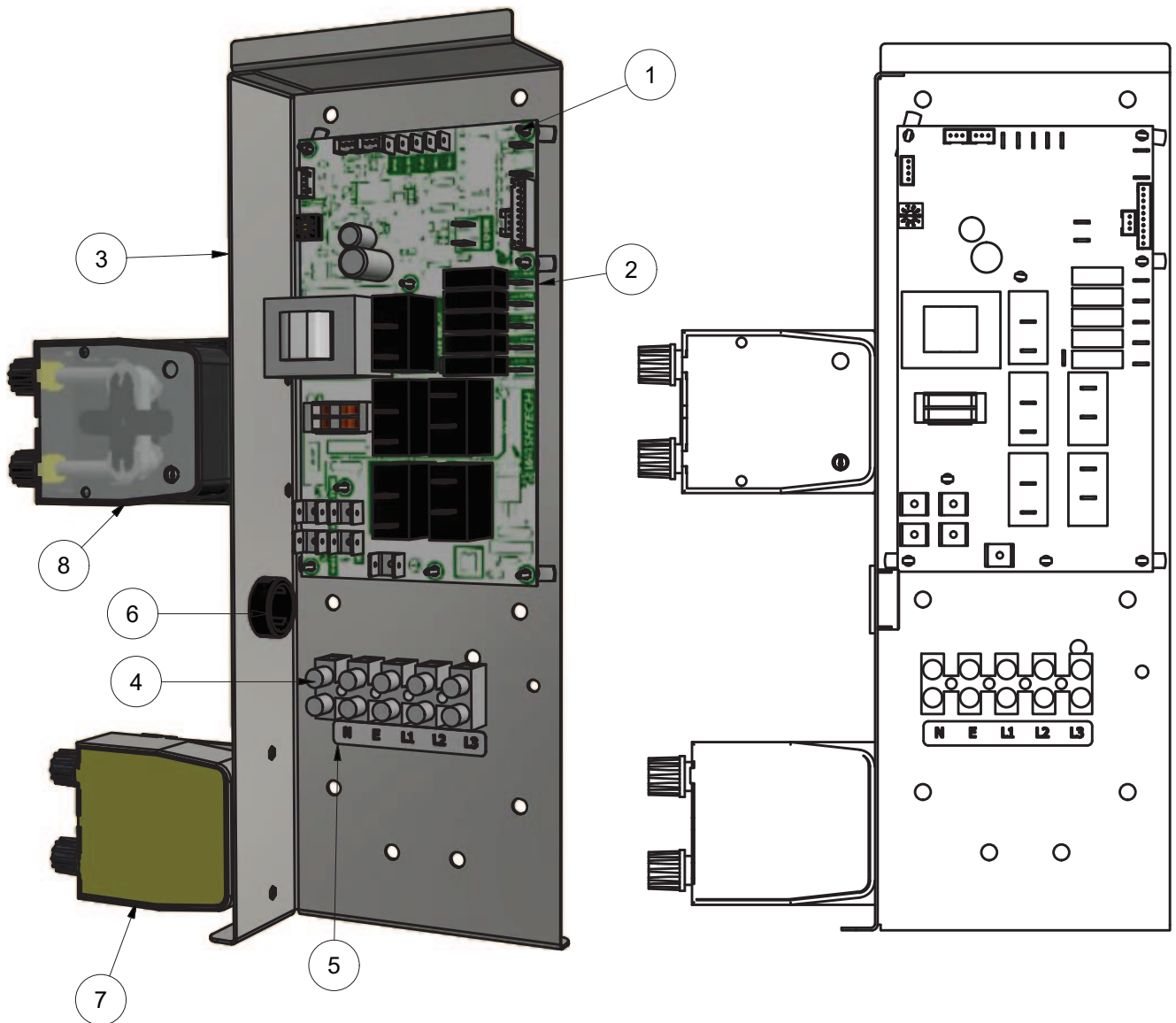
KIT0440067 - For replacement on machines after serial number 133363.

KIT0440068 - Use this kit for machines prior to serial number 133363 to replace both boards. The machine will not function unless both boards are replaced

Parts List			
ITEM	PART NUMBER	DESCRIPTION	QTY
3	600 30527	PCB SUPPORT-END DOME HEAD	8
2	600 30549	WI200 CONTROLLER PCBA	1
1	352 21008	M2VAL(4) WIRING TRAY	1
4	600 30554	TERMINAL STRIP/BLOCK 5 WAY	1
5	Ref	AL TERMINAL LABEL	1
7	600 30094	DETERGENT PUMP KIT	1
6	600 30480	PERISTALTIC RINSE AID PUMP ADJUSTABLE	1
5	600 30331	GROMMET 31.8 MM	1

AL(4) WIRING TRAY ASSY

352 10006 3/07/2017 REV 3-D



Note 1 - Controller Board Replacement Kits

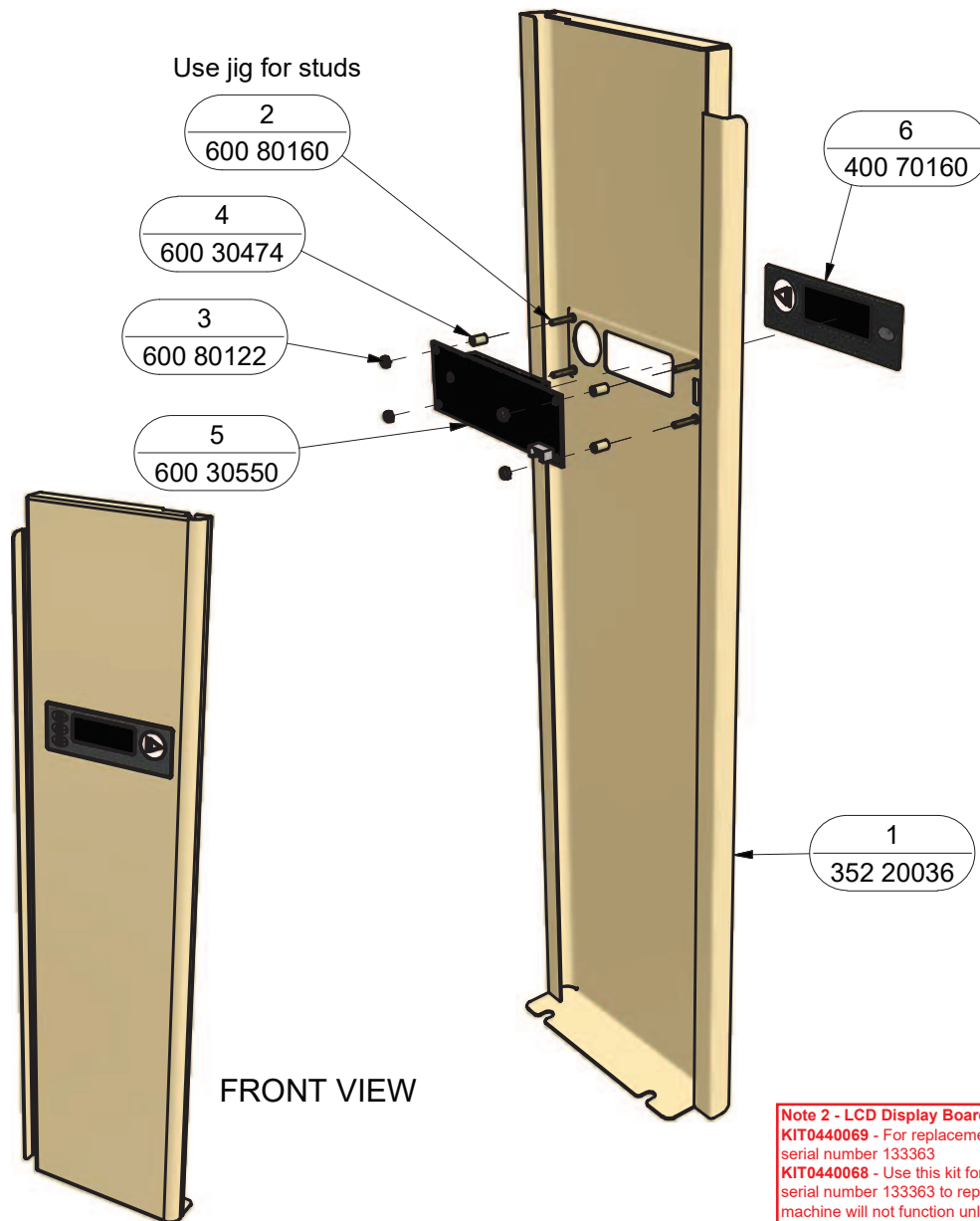
KIT0440067 - For replacement on machines after serial number 133363.
KIT0440068 - Use this kit for machines prior to serial number 133363 to replace both boards. The machine will not function unless both boards are replaced

Parts List			
ITEM	PART NUMBER	DESCRIPTION	QTY
1	600 30449	PCB SUPPORT NYLON 6.3MM	9
2	600 30549	W200 CONTROLLER PCBA	1
3	352 20008	M2AL(4) WIRING TRAY	1
4	32275	TERMINAL STRIP 5 WAY	1
5	Ref	AL TERMINAL LABEL	1
6	600 30089	BUSH SNAP - IN 25mm	1
7	600 30094	DETERGENT PUMP KIT	1
8	600 30480	PERISTALTIC PUMP RA ADJUSTABLE	1

AL\M2 CONTROL PANEL ASSY

328 10020 29/06/2017 REV 3-F

EXPLODED VIEW



Parts List			
ITEM	PART NUMBER	DESCRIPTION	QTY
1	352 20036	AL(4) TOUCH PAD CONTROL PANEL	1
2	600 80160	STUD S/S WELD STUD M3 x 16	4
3	600 80122	M3 SS HEX NYLON NUT T304	4
4	600 30474	SPACER RETAINING M3 x 8.5 MM	4
5	600 30550	WI200 LCD INTERFACE PCBA & BUTTON, REV C	1
6	400 70160	WASHTECH WI200 KEYPAD MEMBRANE v2	1

Universal Electronic Controller WI200

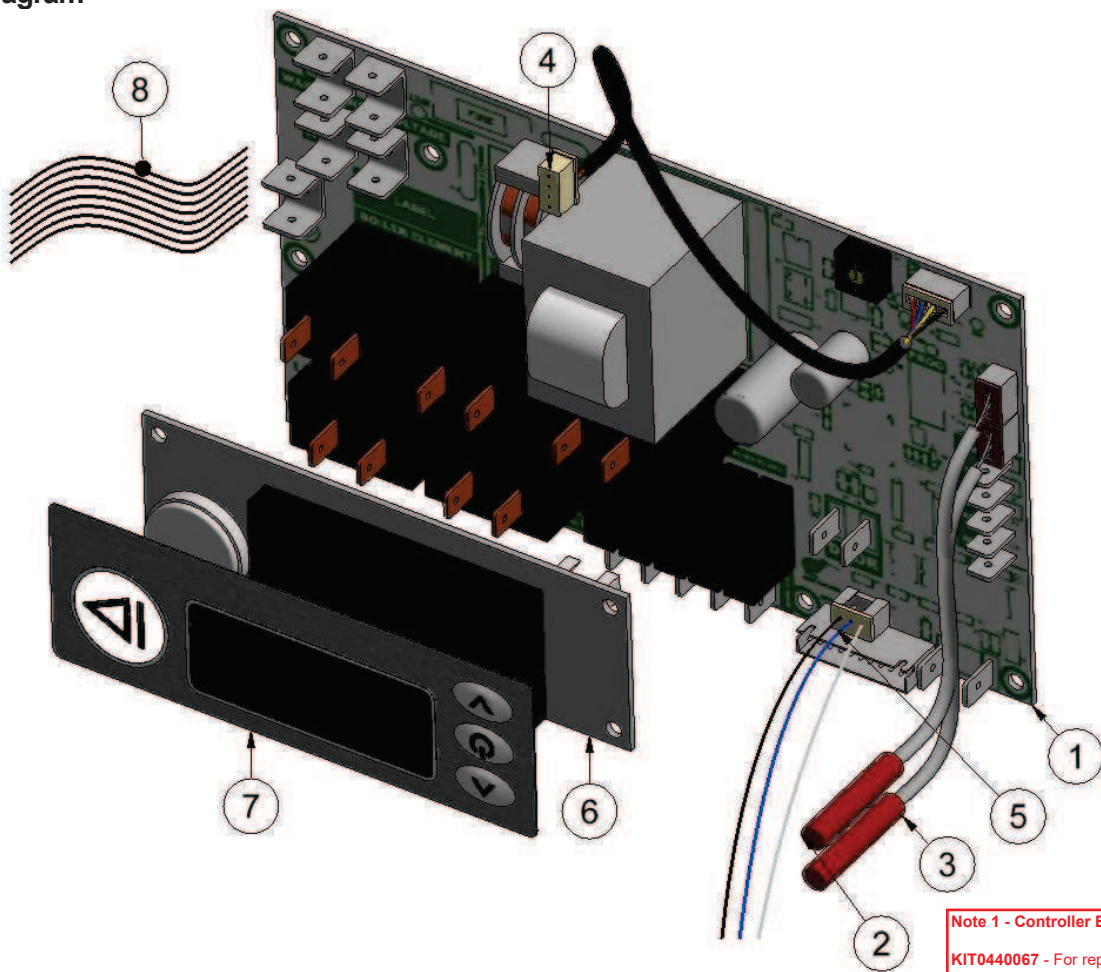
Function

The WI-200 controller is designed to monitor and manage multiple processes in the dishwasher such as cycle timing, temperature control, motor control, cleaning cycle, chemical dispensing and many more.

Description

The controller board is equipped with quick connector terminals for 230/240V power supply, connector strip for 12V inputs, quick connectors for 230-240V outputs, door switch quick connectors, 2 connectors for digital temperature sensors, rotary switch for selection of 10 preset dishwashing modes, connector for touch pad controller and a communication/programming connector.

Diagram



Parts

Item	Part Number	Description
1	Refer to Note 1	Electronic Controller Kit
2	600 30429	Digital Temperature Sensor 0.5 m
3	600 30430	Digital Temperature Sensor 1 m
4	600 30425	Loom LCD Interface 0.7 m
5	600 30486	Loom Low Voltage Interface 3-way 0.7m R
6	Refer to Note 2	Kit LCD Board with spacers
7	KIT0440047	Keypad Membrane Kit
8	600 30422	Loom Kit AC High Voltage

Note 1 - Controller Board Replacement Kits
KIT0440067 - For replacement on machines after serial number 133363.

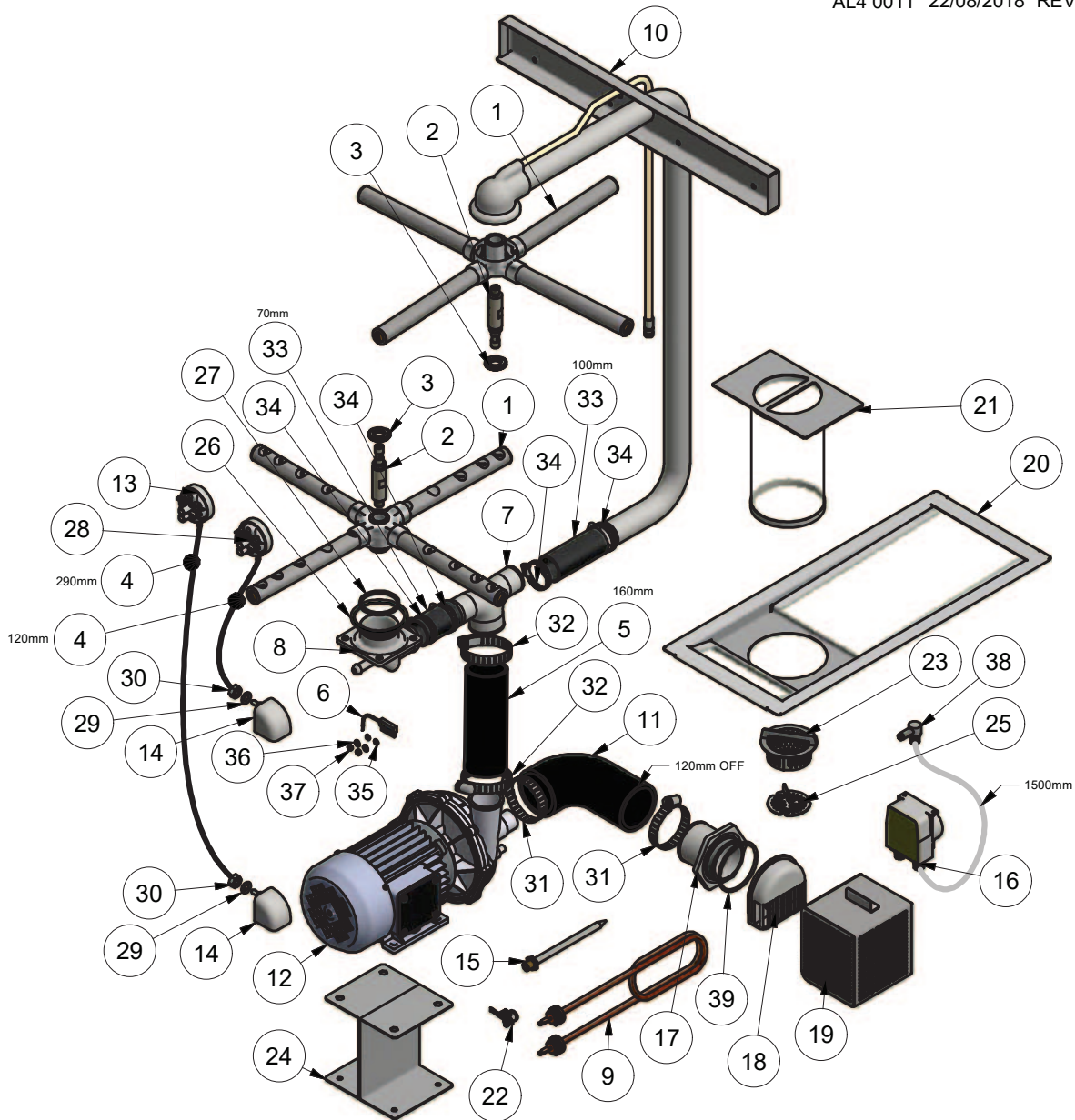
KIT0440068 - Use this kit for machines prior to serial number 133363 to replace both boards. The machine will not function unless both boards are replaced.

Note 2 - LCD Display Board Replacement Kits

KIT0440069 - For replacement on machines after serial number 133363
KIT0440068 - Use this kit for machines prior to serial number 133363 to replace both boards. The machine will not function unless both boards are replaced.

AL(4) WASH SYSTEM

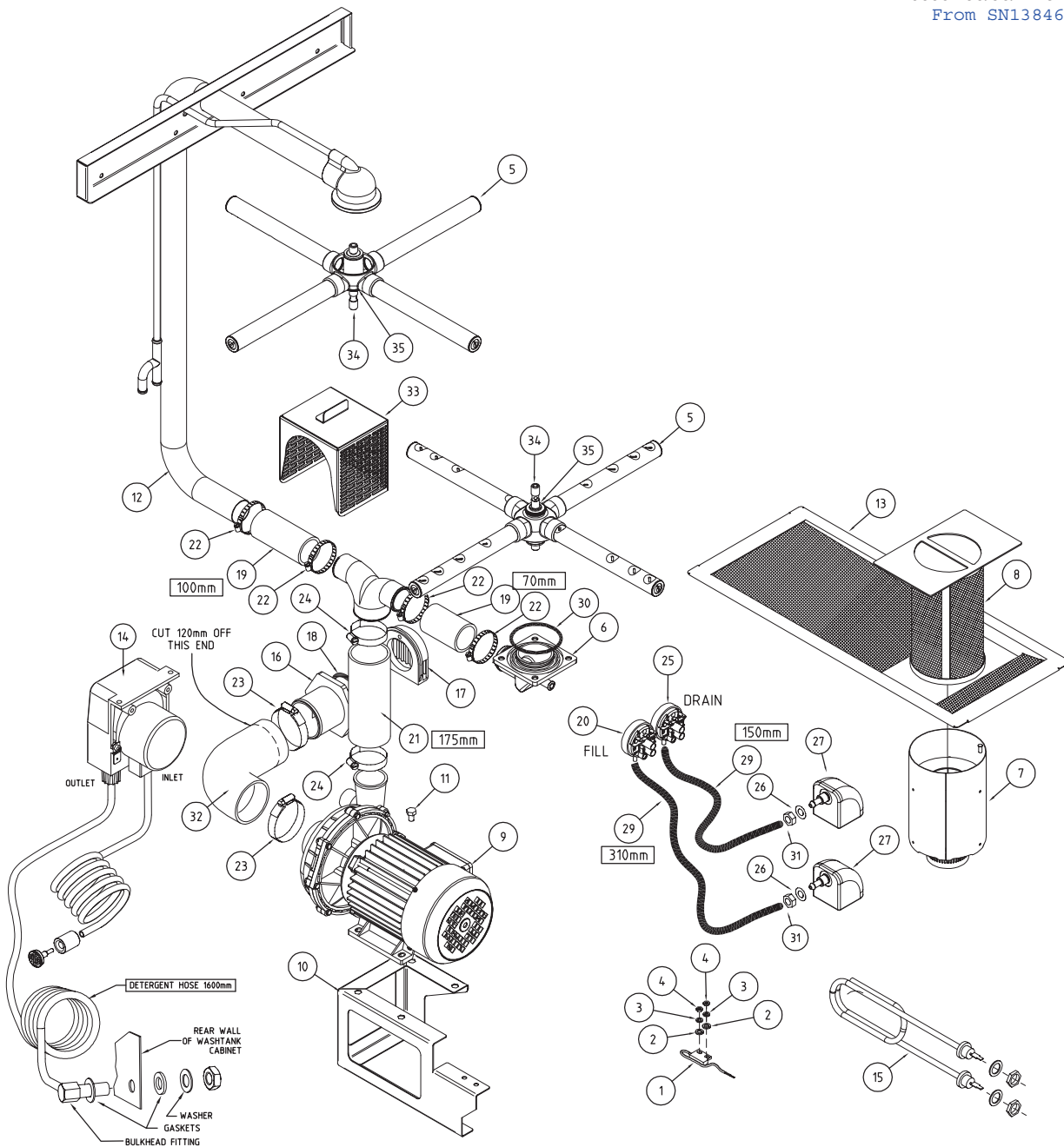
AL4 0011 22/08/2018 REV 3-A



Parts List				Parts List			
ITEM	PART NUMBER	DESCRIPTION	QTY	ITEM	PART NUMBER	DESCRIPTION	QTY
1	400 10077	AL/AL8 WASH ARM ASSY	2	21	352 10078	AL WASTE BASKET	1
2	400 30362	WASH SPINDLE AL	2	22	600 30088	THERMOSTAT TY60/R-110C & BRACKET	1
3	280409C	LOCKNUT M18	2	23	352 10090	AL(4)AL-C DRAIN SUMP FILTER	1
4	3067	P SW HOSE 4mm VACUUM	420mm	24	352 20090	AL(4)AL-C WASH PUMP MOUNTING BRACKET V2	2
5	61941	HOSE 50mm x 38mm 2 PLY RADIATOR	160mm	25	352 10091	AL(4)AL-C DRAIN SUMP PLATE ASSY	1
6	600 30183	REED SWITCH STEM	1	26	ARP336	O-RING ARP336	1
7	400 90126	50mm x 38mm REDUCER TEE	1	27	400 30191	BLACK ACETAL SLIP RING AL	1
8	400 90140	AL LOWER WASH TEE	1	28	400 10214	PRES SWITCH B/TANK & DRAIN	1
9	600 30159	ELEMENT 2500W STRAIGHT ELEMENT	1	29	ARP205	O-RING 11IDx18OD	2
10	352 10003	AL(4) WASH PIPE ASSEMBLY	1	30	600 80009	M10 SS HX NUT	2
11	C200359	HOSE C34 WASH INLET	1	31	ASS44	HOSE CLAMP ASS44	2
12	600 30412	PUMP WASH AL 1.5 hp	1	32	ASS36	HOSE CLAMP ASS36	2
13	400 10213	PRES SWITCH FILL AL	1	33	6195	HOSE 38mm 2 PLY RADIATOR	170mm
14	400 90135	PRESSURE BELL CASTING	2	34	ASS24	HOSE CLAMP ASS24	4
15	400 10065	ASSY THERM PROBE POCKET	1	35	600 80081	FLAT SS T304 M4 WASHER	2
16	600 30094	PERISTALTIC DET PUMP	1	36	8567	WASHER SPRING SS 304 M5	2
17	400 90160	AL WASH PUMP INLET CASTING EXTERNAL	1	37	8112	SS HEX NUT M4	2
18	400 90171	AL WASH PUMP INLET CASTING INNER	1	38	600 30170	DETERGENT BULKHEAD FITTING	1
19	352 10026	AL(4) WASH PUMP INLET FILTER ASSY	1	39	ARP233	O-RING ARP233	1
20	352 10092	AL(4)AL-C SCRAP TRAY ASSEMBLY	1	40			1

AL(4) WASH SYSTEM

AL4 0006 30/06/17 3D
From SN138460

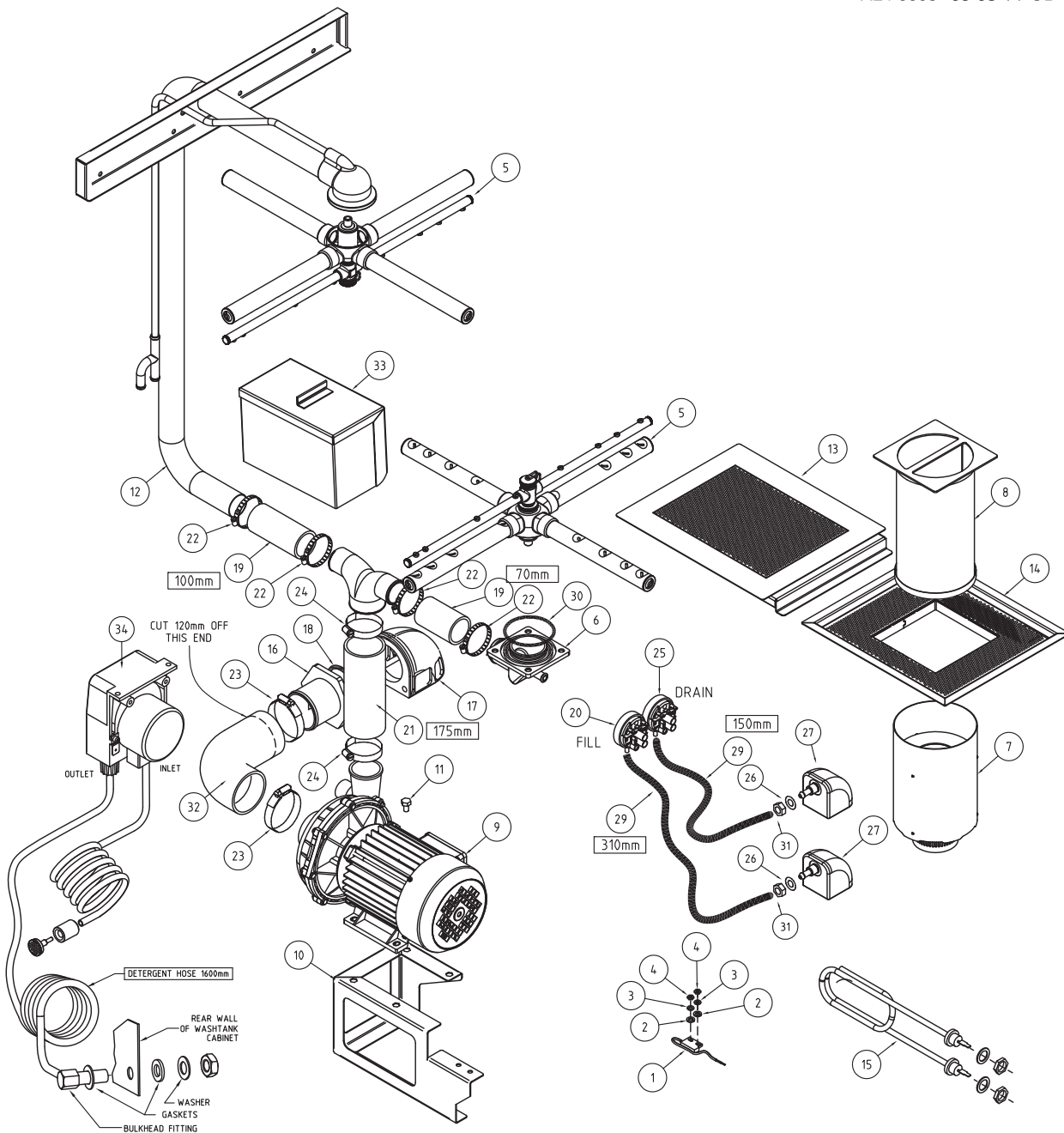


ITEM	CODE	DESCRIPTION	QTY
1	600 30183	REED SWITCH STEM	1
2	600 80081	M4 WASHER 304	2
3	8567	WASHER SPRING SS 304 MS	2
4	8112	NUT HEX SS 304 M4	2
5	400 10077	AL/ALB WASH ARM ASSY	2
6	400 90140	AL LOWER WASH TEE	1
7	352 10032	AL(4) DRAIN FILTER ASSY	1
8	352 10078	AL(4) WASTE BASKET ASSY	1
9	600 30412	PUMP WASH AL 15HP	1
10	352 20007	AL(4) WASH PUMP SUPPORT BRKT	1
11	600 80029	MS HX SS 304 M8x12	4
12	352 10003	AL WASH MANIFOLD ASSY	1
13	352 10080	AL SCRAP TRAY ASSEMBLY	1
14	600 30094	PERI PUMP 1.5L/H SEKO-KIT	1
15	600 30159	ELEMENT 2500W STRAIGHT ELEMENT	1
16	400 90160	AL WASH PUMP INLET CASTING EXTERNAL	1
17	400 90171	AL WASH PUMP INLET CASTING INNER	1
18	ARP233 N70	O-RING	1
19	6195	HOSE 38mm 2 PLY RADIATOR	0.17M

ITEM	CODE	DESCRIPTION	QTY
20	400 10213	PRESSURE SWITCH FILL AL	1
21	61941	HOSE 50mm 2 PLY RADIATOR	0.175M
22	ASS24	HOSECLIP ASS24	4
23	ASS44	HOSECLIP ASS44	2
24	ASS36	HOSECLIP ASS36	2
25	400 10214	PRESSURE SWITCH BREAK TANK & DRAIN	1
26	ARP205	O RING 205	2
27	400 90135	SQUARE PRESSURE BELL CASTING	2
28	400 30191	AL(3) BLACK ACETAL SLIP RING	1
29	3067	HOSE PRESSURE SW VACUUM 4mm	2
30	ARP336	ARP336 O-RING	1
31	600 80009	NUT SS 304 HEX M10	2
32	C200359	HOSE C34 WASH INLET	1
33	352 10026	AL INLET FILTER	1
34	400 30014	SPINDLE AL WASH	2
35	C280409	LOCKNUT M18	2

AL(4) WASH SYSTEM

AL4 0006 05-08-14 3B

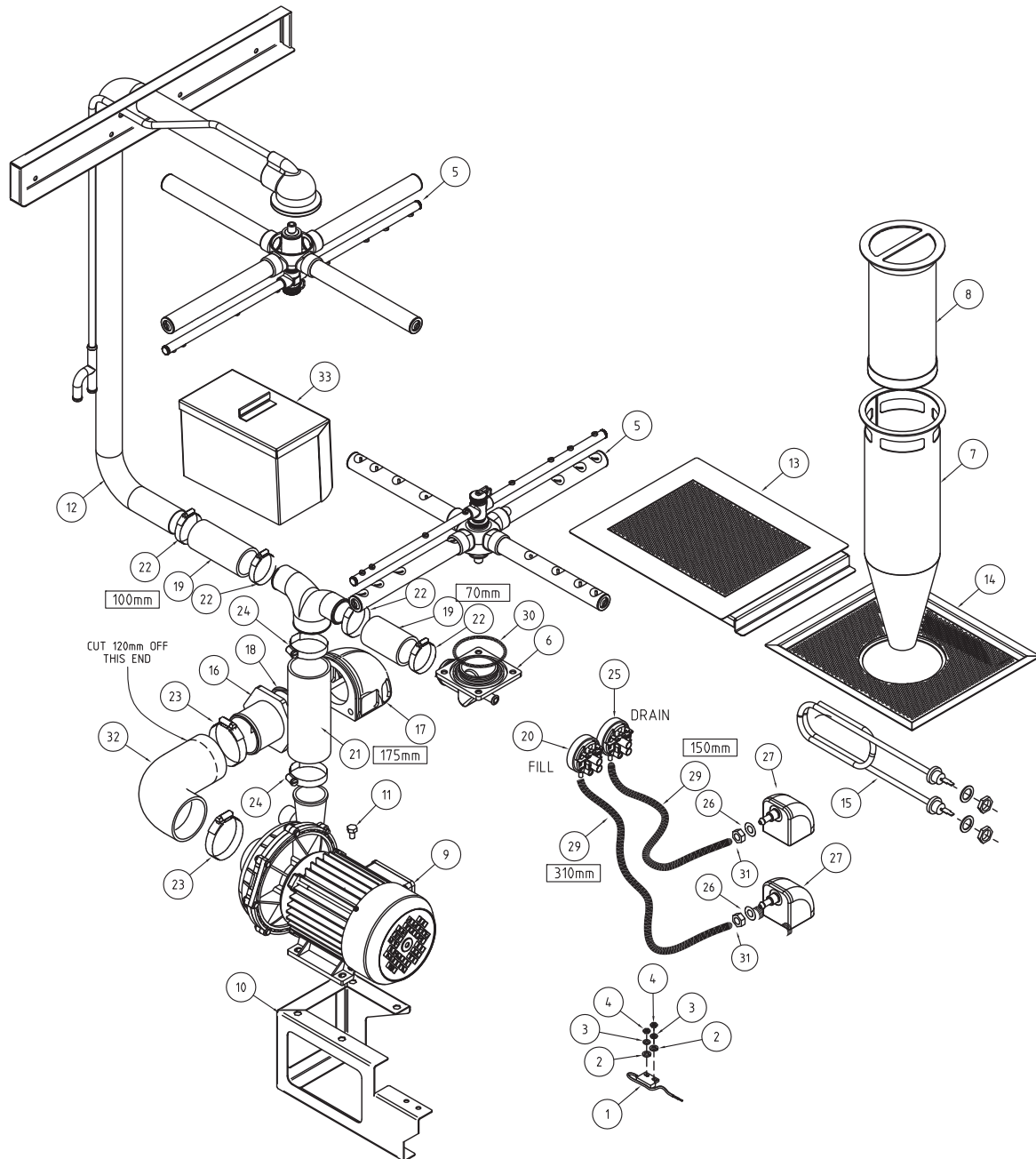


ITEM	CODE	DESCRIPTION	QTY
1	600 30183	REED SWITCH STEM	1
2	600 80081	M4 WASHER 304	2
3	8567	WASHER SPRING SS 304 MS	2
4	8112	NUT HEX SS 304 M4	2
5	351 10001	AL/ALB WASH ARM ASSY	2
6	400 90140	AL LOWER WASH TEE	1
7	352 10032	AL(4) DRAIN COLLECTOR ASSY	1
8	352 10033	AL(4) FILTER BASKET ASSY	1
9	600 30412	PUMP WASH AL 15HP	1
10	352 20007	AL(4) WASH PUMP SUPPORT BRKT	1
11	600 80029	MS HX SS 304 M8x12	4
12	352 10003	AL WASH MANIFOLD ASSY	1
13	352 10018	AL(4) FILTER PLATE ASSY	1
14	352 10031	AL(4) FILTER TRAY ASSY	1
15	600 30159	ELEMENT 2500W STRAIGHT ELEMENT	1
16	400 90160	AL WASH PUMP INLET CASTING EXTERNAL	1
17	400 90161	AL WASH PUMP INLET CASTING INNER	1
18	ARP233 N70	O-RING	1
19	6195	HOSE 38mm 2 PLY RADIATOR	0.17M

ITEM	CODE	DESCRIPTION	QTY
20	400 10213	PRESSURE SWITCH FILL AL	1
21	61941	HOSE 50mm 2 PLY RADIATOR	0.175M
22	ASS24	HOSECLIP ASS24	4
23	ASS44	HOSECLIP ASS44	2
24	ASS36	HOSECLIP ASS36	2
25	400 10214	PRESSURE SWITCH BREAK TANK & DRAIN	1
26	ARP205	O RING 205	2
27	400 90135	SQUARE PRESSURE BELL CASTING	2
28	400 30191	AL(3) BLACK ACETAL SLIP RING	1
29	3067	HOSE PRESSURE SW VACUUM 4mm	2
30	ARP336	ARP336 O-RING	1
31	600 80009	NUT SS 304 HEX M10	2
32	C200359	HOSE C34 WASH INLET	1
33	352 10026	AL INLET FILTER	1
34	600 30094	PERI PUMP 15L/H SEKO-KIT	1

AL(4) WASH SYSTEM

AL4 0002 17-12-13 3D



ITEM	CODE	DESCRIPTION	QTY
1	600 30183	REED SWITCH STEM	1
2	600 80081	M4 WASHER 304	2
3	8567	WASHER SPRING SS 304 MS	2
4	8112	NUT HEX SS 304 M4	2
5	351 10001	AL/ALB WASH ARM ASSY	2
6	400 90140	AL LOWER WASH TEE	1
7	352 10021	AL(4) DRAIN COLLECTOR ASSY	1
8	352 10022	AL(4) FILTER BASKET ASSY	1
9	600 30412	PUMP WASH AL 15HP	1
10	352 20007	AL(4) WASH PUMP SUPPORT BRKT	1
11	600 80029	MS HX SS 304 M8x12	4
12	352 10003	AL WASH MANIFOLD ASSY	1
13	352 10018	AL(4) FILTER PLATE ASSY	1
14	352 10020	AL(4) FILTER TRAY ASSY	1
15	600 30159	ELEMENT 2500W STRAIGHT ELEMENT	1
16	400 90160	AL WASH PUMP INLET CASTING EXTERNAL	1
17	400 90161	AL WASH PUMP INLET CASTING INNER	1
18	ARP233 N70	O-RING	1
19	6195	HOSE 38mm 2 PLY RADIATOR	0.17M

ITEM	CODE	DESCRIPTION	QTY
20	400 10213	PRESSURE SWITCH FILL AL	1
21	61941	HOSE 50mm 2 PLY RADIATOR	0.175M
22	ASS24	HOSECLIP ASS24	4
23	ASS44	HOSECLIP ASS44	2
24	ASS36	HOSECLIP ASS36	2
25	400 10214	PRESSURE SWITCH BREAK TANK & DRAIN	1
26	ARP205	O RING 205	2
27	400 90135	SQUARE PRESSURE BELL CASTING	2
28	400 30191	AL(3) BLACK ACETAL SLIP RING	1
29	3067	HOSE PRESSURE SW VACUUM 4mm	2
30	ARP336	ARP336 O-RING	1
31	600 80009	NUT SS 304 HEX M10	2
32	C200359	HOSE C34 WASH INLET	1
33	352 10026	AL INLET FILTER	1

Wash Pump

Part Number

600 30412

Function

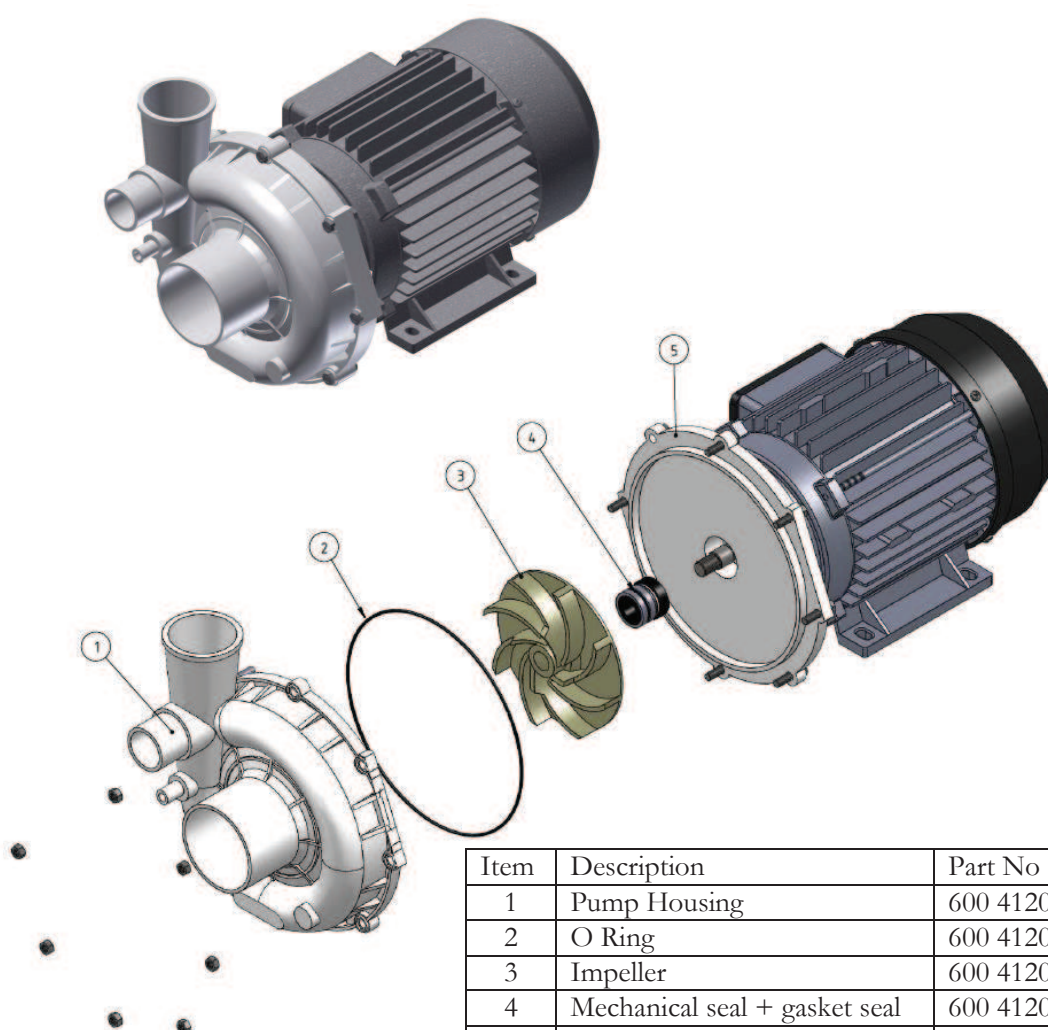
Pumps water from the wash tank to the wash arms providing a recirculating wash cycle.

Description

Wash Pump

Power:	HP 1.5 Kw 1.1	Capacitor:	16 uF 450 V
Voltage:	220-240 V 50 Hz	Thermal Protection:	160°C
Amperes:	5 A	Speed:	2750 RPM

Diagram

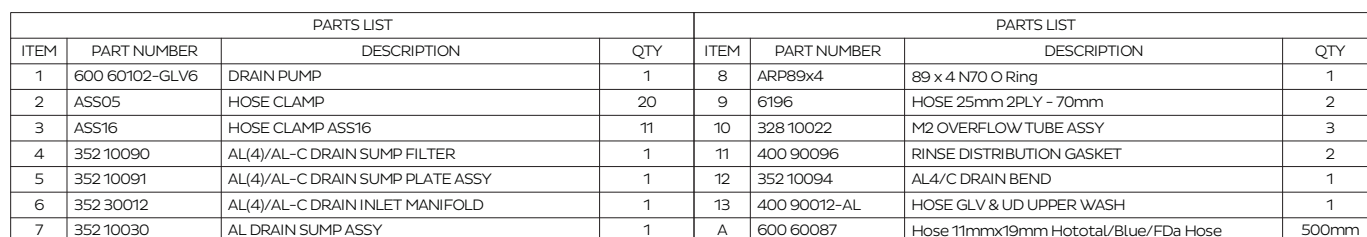


Item	Description	Part No
1	Pump Housing	600 41204
2	O Ring	600 41205
3	Impeller	600 41206
4	Mechanical seal + gasket seal	600 41207
5	Flange	600 41208
	Capacitor	3894

Replacement

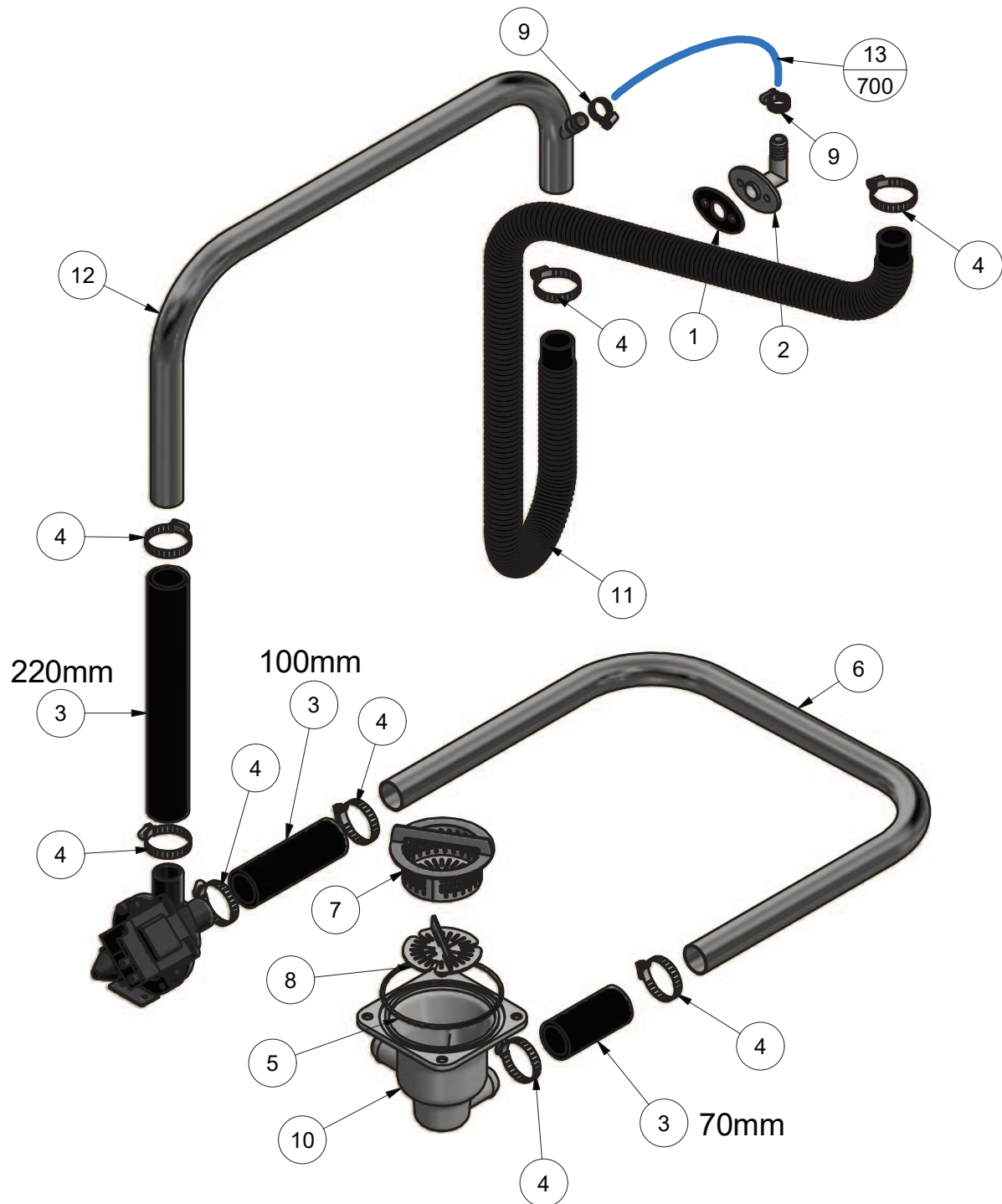
Drain the wash tank and switch off the power.
 Disconnect the wires from the pump connectors and the pump capacitor. .
 Release the hose clamps on the inlet and outlet pump hoses and remove the pump.
 Replace in reverse order.

AL4 0012 26/11/2019 3-B



AL-4 DRAIN SYSTEM

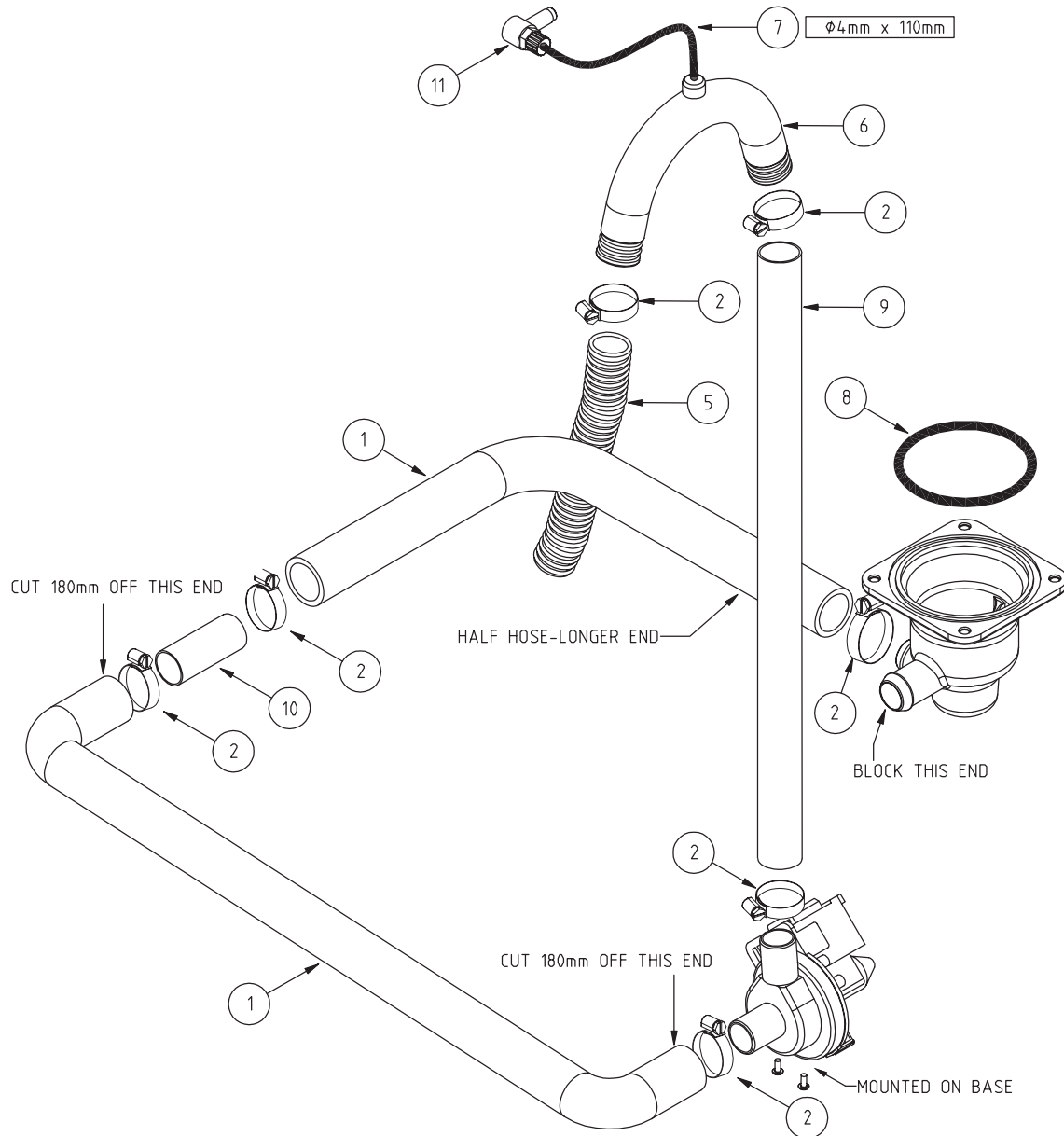
AL4 0012 22/08/2018 REV 3-A
From SN164161



Parts List				Parts List			
ITEM	PART NUMBER	DESCRIPTION	QTY	ITEM	PART NUMBER	DESCRIPTION	QTY
1	328 10022	M2 OVERFLOW TUBE ASSY	1	8	352 10091	AL(4)/AL-C DRAIN SUMP PLATE ASSY	1
2	400 90096	RINSE DISTRIBUTION GASKET	1	9	ASS05	HOSE CLAMP	2
3	6197	HOSE 22mm RADIATOR	390mm	10	352 10030	AL DRAIN SUMP ASSY	1
4	ASS16	HOSE CLAMP ASS16	8	11	600 60105	HOSE DRAIN PUMP 2.5M	1
5	ARP89x4	89 x 4 N70 O Ring	1	12	352 10093	AL(4)/AL-C DRAIN O/LET M/FOLD ASSY	1
6	352 30012	AL(4)/AL-C DRAIN INLET MANIFOLD	1	13	600 60073	HOSE HOTOTAL 11mm x 19mm	700mm
7	352 10090	AL(4)/AL-C DRAIN SUMP FILTER	1				

AL-4 DRAIN SYSTEM

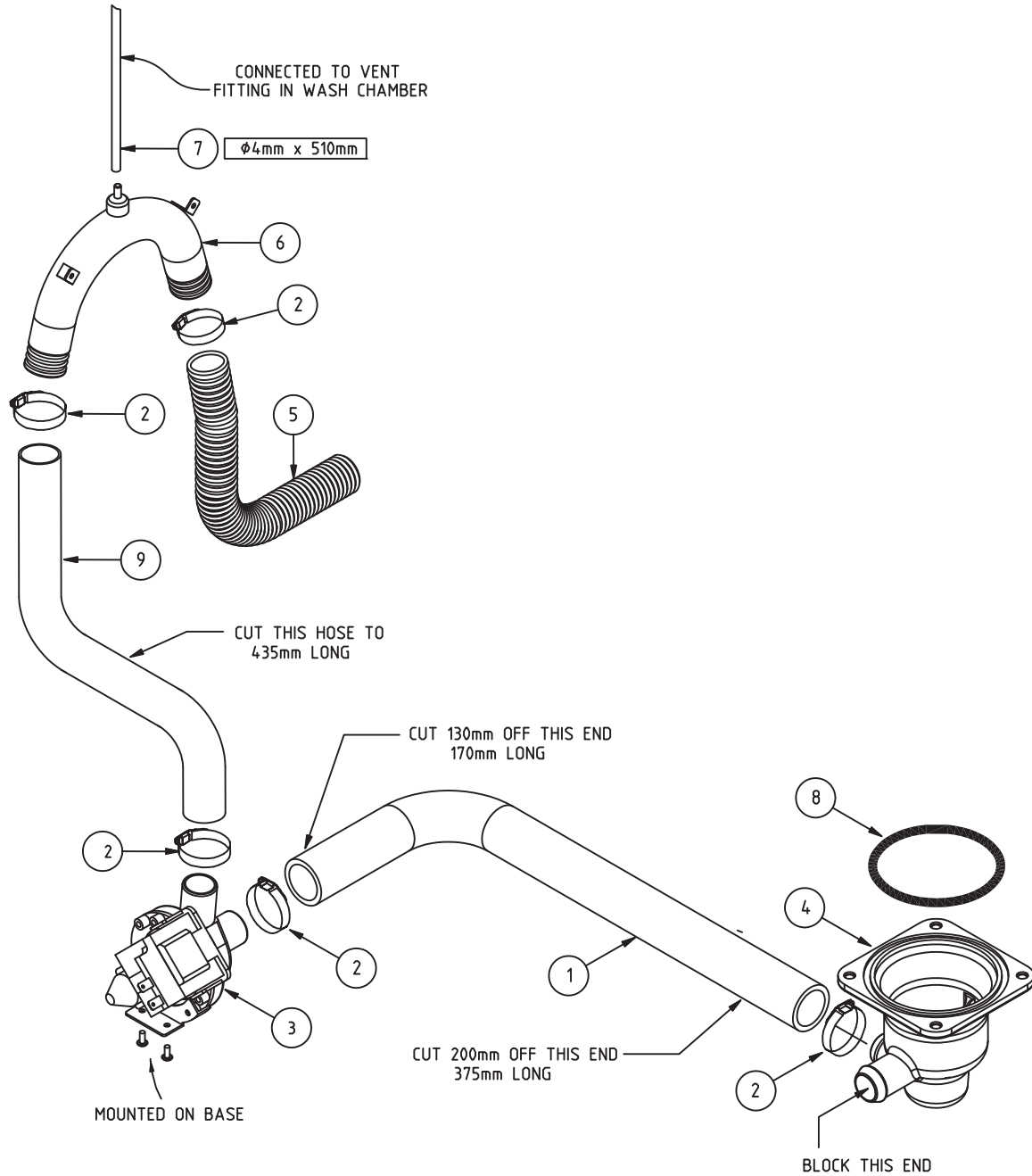
AL-4 0003 3/02/16 3G



ITEM	CODE	DESCRIPTION	QTY
1	400 90012	GLV/UD UPPER WASH HOSE	1.5
2	ASS16	HOSECLIP ASS16	5
3	600 60102	DRAIN PUMP	1
4	400 90158	CASTING XG\GM WASH & DRAIN SUMP	1
5	600 60105	DRAIN HOSE	1
6	600 60502	19mm BLACK VENTED LOOP	1
7	3067	HOSE PRESSURE SW VACUUM 4mm	110mm
8	ARP89x4	O-RING 89 x 4 N70	1
9	6197	HOSE 22mm RADIATOR	400mm
10	4013	TUBE SS ROUND T304 12.4mm x 1.2mm	60mm
11	600 30170	SS INLET	1

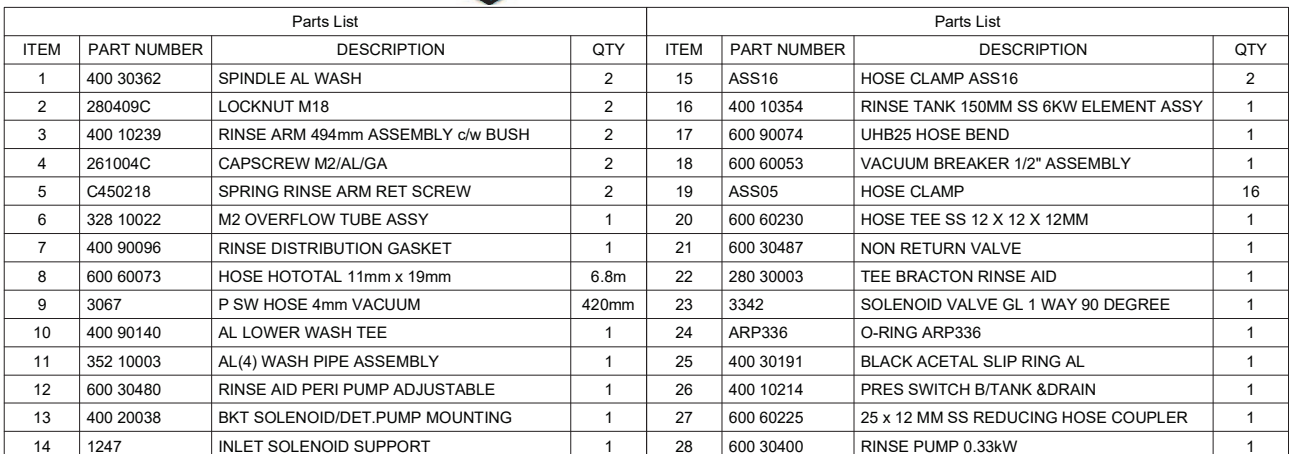
AL-4 DRAIN SYSTEM

AL-4 0003 05-08-14 3F



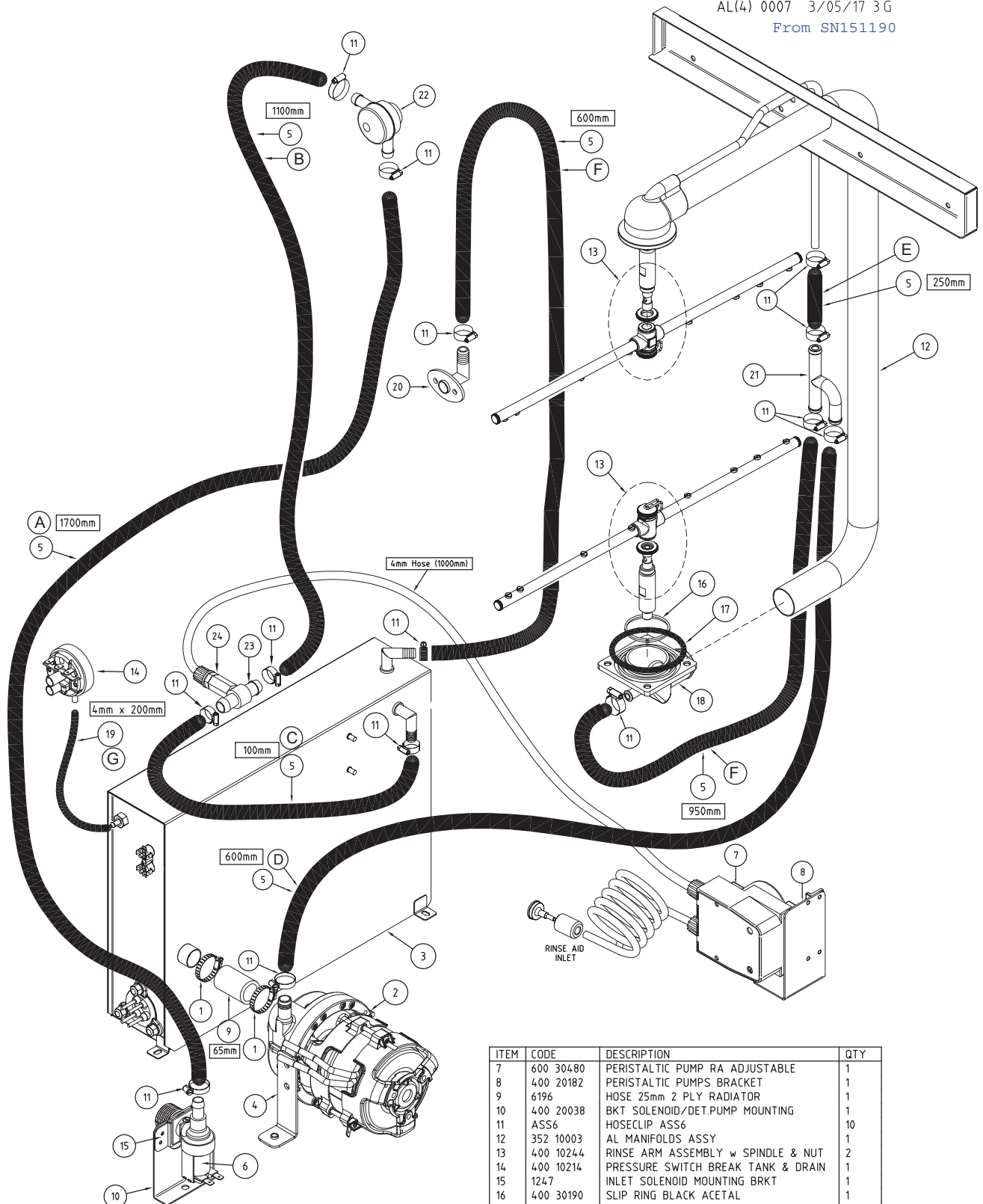
ITEM	CODE	DESCRIPTION	QTY
1	400 90012	GLV/UD UPPER WASH HOSE	1
2	ASS16	HOSECLIP ASS16	5
3	600 60102	DRAIN PUMP	1
4	400 90158	CASTING XG\GM WASH & DRAIN SUMP	1
5	600 60105	DRAIN HOSE	1
6	600 60502	19mm BLACK VENTED LOOP	1
7	3067	HOSE PRESSURE SW VACUUM 4mm	1
8	ARP89x4	O-RING 89 x 4 N70	1
9	6197	HOSE 22mm RADIATOR	435mm

AL4 0010 28/09/2018 REV 3-B
From SN157060



AL-4 (S & W) RINSE SYSTEM

AL(4) 0007 3/05/17 3G
From SN151190

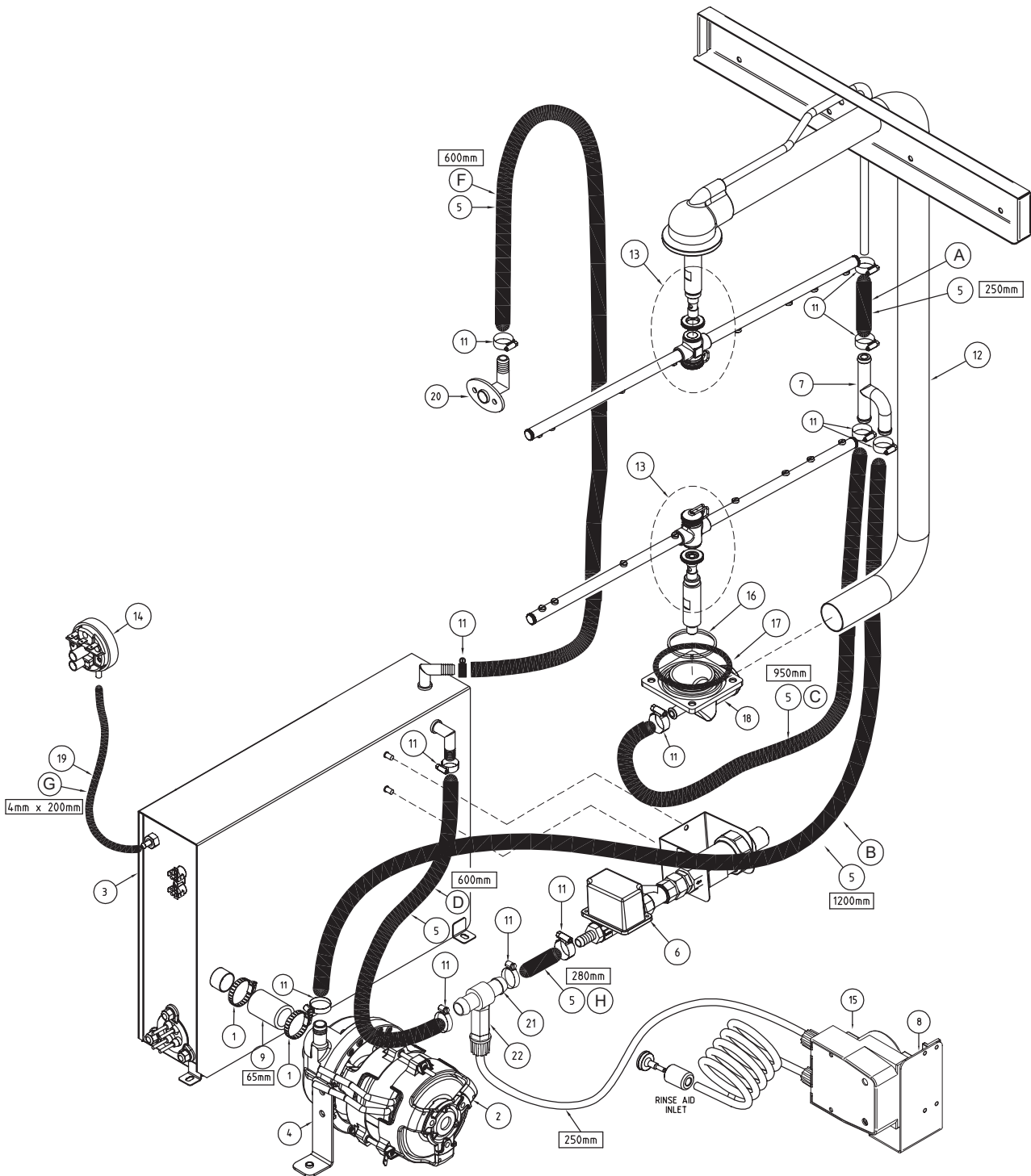


ITEM	CODE	DESCRIPTION	QTY
1	ASS16	HOSECLIP ASS16	4
2	600 30508	RINSE PUMP 0.18KW	1
3		AL4 RINSE TANK ASSEMBLY V3	1
4	328 20017	M2(4) RINSE PUMP SUPPORT BRACKET	1
5	600 60073	HOTOTAL HOSE 11mm X 19mm	1
6	3342	SOLENOID VALVE GL 1 WAY 90°	1

ITEM	CODE	DESCRIPTION	QTY
7	600 30480	PERISTALTIC PUMP RA ADJUSTABLE	1
8	400 20182	PERISTALTIC PUMPS BRACKET	1
9	6196	HOSE 25mm 2 PLY RADIATOR	1
10	400 20038	BKT SOLENOID/DET.PUMP MOUNTING	1
11	ASS6	HOSECLIP ASS6	10
12	352 10003	AL MANIFOLDS ASSY	1
13	400 10244	RINSE ARM ASSEMBLY w SPINDLE & NUT	2
14	400 10214	PRESSURE SWITCH BREAK TANK & DRAIN	1
15	1247	INLET SOLENOID MOUNTING BRKT	1
16	400 30190	SLIP RING BLACK ACETAL	1
17	ARP336	O-RING	1
18	400 90140	AL WASH TEE	1
19	3067	HOSE PRESSURE SW VACUUM 4mm	1
20	328 10022	M2 OVERFLOW TUBE ASSY	1
21	400 90076	SS RINSE TEE	1
22	600 60053	VACUUM BREAKER ASSY	1
23	280 30003	TEE BRACKTON RINSE AID	1
24	600 30487	NON RETURN VALVE	1

WASHTECH AL(4) RINSE SYSTEM

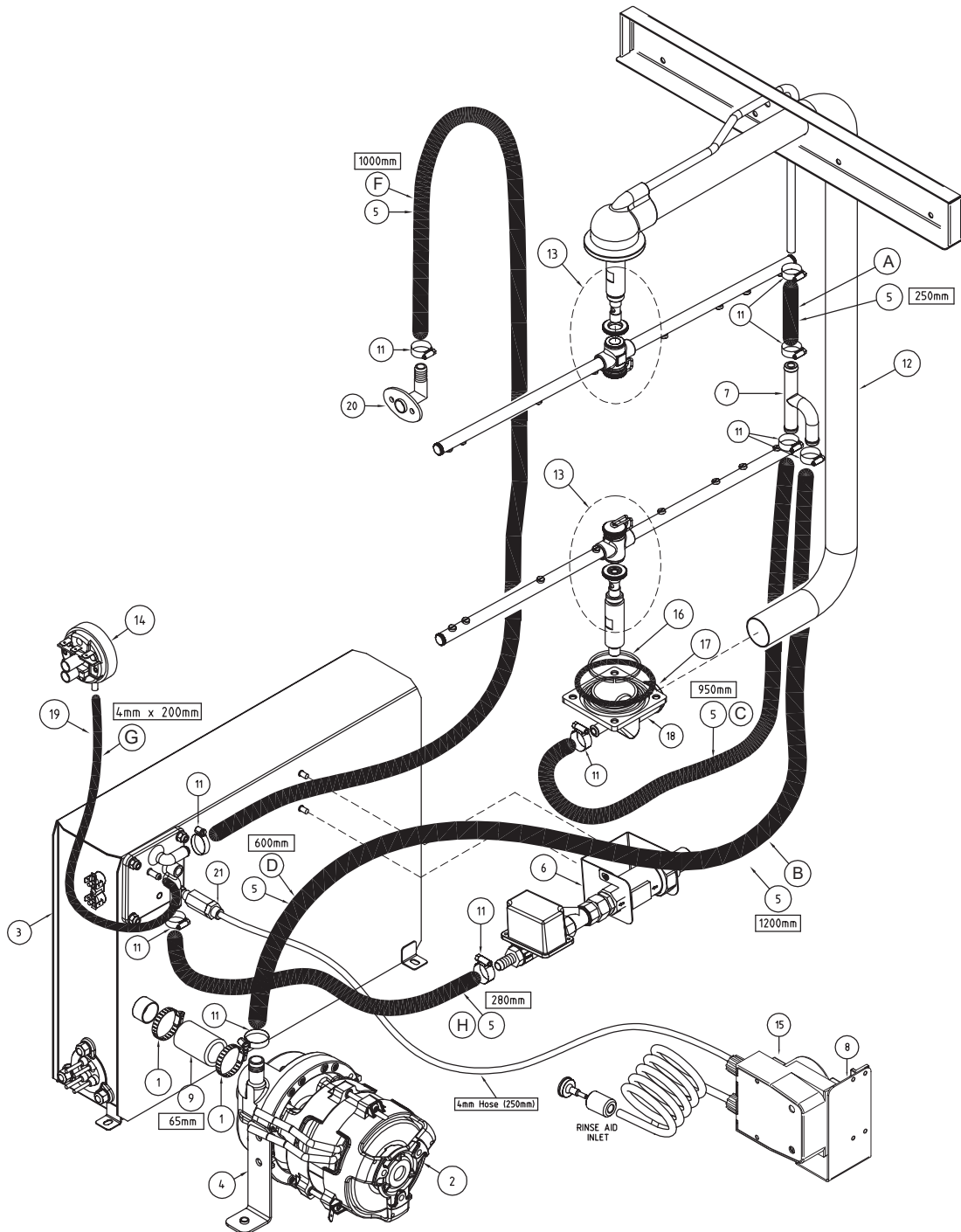
AL(4) 0004 12/12/16 3 K



ITEM	CODE	DESCRIPTION	QTY	ITEM	CODE	DESCRIPTION	QTY
1	ASS16	HOSECLIP ASS16	4	12	352 10003	AL MANIFOLDS ASSY	1
2	600 30508	RINSE PUMP 0.18KW	1	13	400 10244	RINSE ARM ASSEMBLY w SPINDLE & NUT	2
3		AL4 RINSE TANK ASSEMBY V3	1	14	400 10214	PRESSURE SWITCH BREAK TANK & DRAIN	1
4	328 20017	M2(4) RINSE PUMP SUPPORT BRACKET	1	15	600 30480	PERISTALTIC PUMP RA ADJUSTABLE	1
5	600 60073	HOTOTAL HOSE 11mm X 19mm	1	16	400 30190	SLIP RING BLACK ACETAL	1
6	400 10174	AL4 SOLENOID ASSEMBLY	1	17	ARP336	O-RING	1
7	400 90076	SS RINSE TEE	1	18	400 90140	AL WASH TEE	1
8	400 20182	PERISTALTIC PUMPS BRACKET	1	19	3067	HOSE PRESSURE SW VACUUM 4mm	1
9	6196	HOSE 25mm 2 PLY RADIATOR	1	20	328 10022	M2 OVERFLOW TUBE ASSY	1
10	600 60225	25 x 12 MM SS REDUCING HOSE COUPLER	1	21	280 30003	TEE BRACKTON RINSE AID	1
11	ASS6	HOSECLIP ASS6	12	22	600 30487	NON RETURN VALVE	1

WASHTECH AL(4) RINSE SYSTEM

AL(4) 0004 23/11/16 3 J
From SN144831

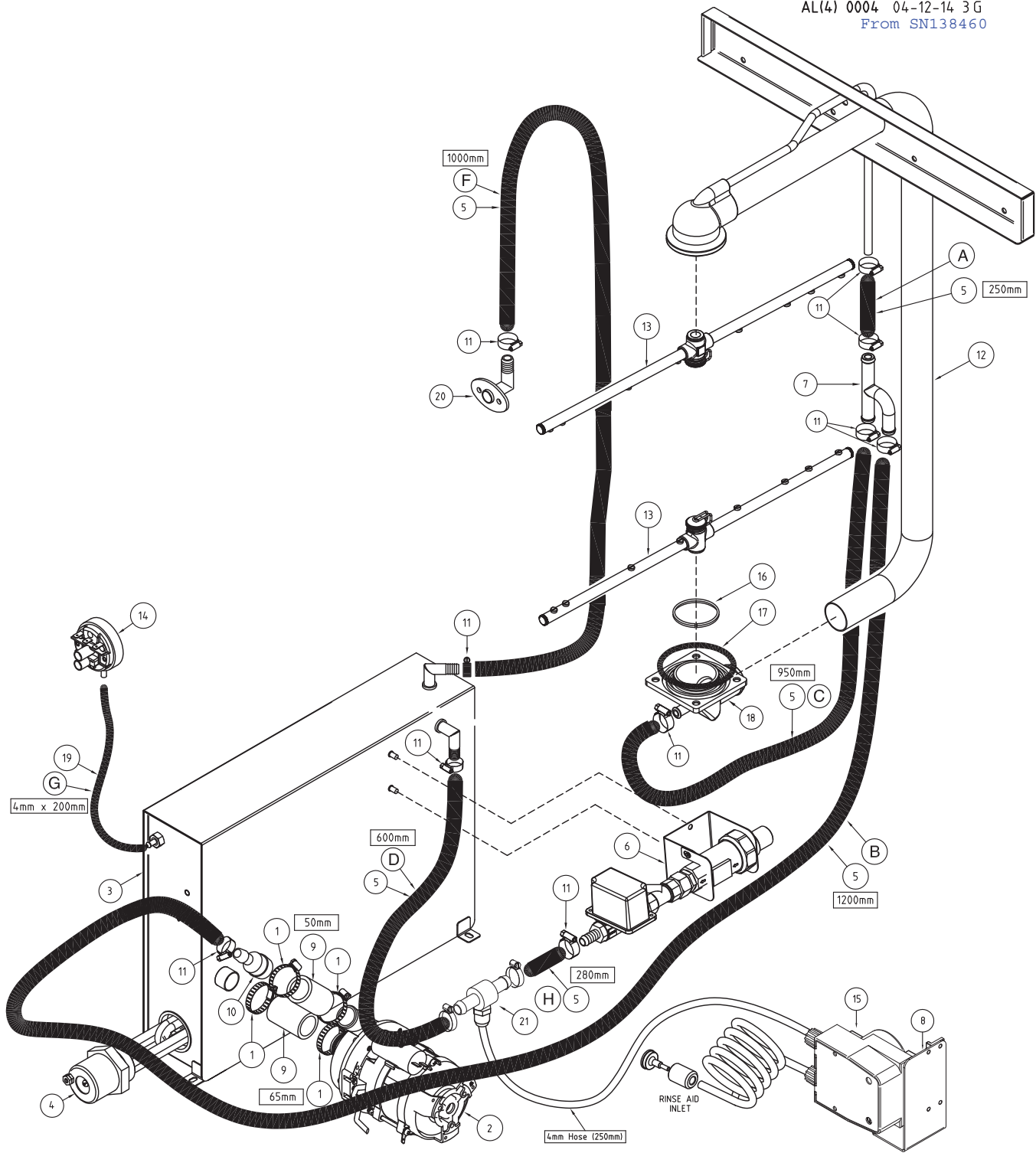


ITEM	CODE	DESCRIPTION	QTY
1	ASS16	HOSECLIP ASS16	4
2	600 30508	RINSE PUMP 0.18KW	1
3		AL4 BREAK TANK ASSEMBLY V2	1
4	328 20017	M2(4) RINSE PUMP SUPPORT BRACKET	1
5	600 60073	HOTOTAL HOSE 11mm X 19mm	1
6	400 10174	AL4 SOLENOID ASSEMBLY	1
7	400 90076	SS RINSE TEE	1
8	400 20182	PERISTALTIC PUMPS BRACKET	1
9	6196	HOSE 25mm 2 PLY RADIATOR	1
10	600 60225	25 x 12 MM SS REDUCING HOSE COUPLER	1
11	ASS6	HOSECLIP ASS6	10

ITEM	CODE	DESCRIPTION	QTY
12	352 10003	AL MANIFOLDS ASSY	1
13	400 10244	RINSE ARM ASSEMBLY w SPINDLE & NUT	2
14	400 10214	PRESSURE SWITCH BREAK TANK & DRAIN	1
15	600 30480	PERISTALTIC PUMP RA ADJUSTABLE	1
16	400 30190	SLIP RING BLACK ACETAL	1
17	ARP336	O-RING	1
18	400 90140	AL WASH TEE	1
19	3067	HOSE PRESSURE SW VACUUM 4mm	1
20	328 10022	M2 OVERFLOW TUBE ASSY	1
21	600 30480	NON RETURN VALVE	1

WASHTECH AL(4) RINSE SYSTEM

AL(4) 0004 04-12-14 3 G
From SN138460



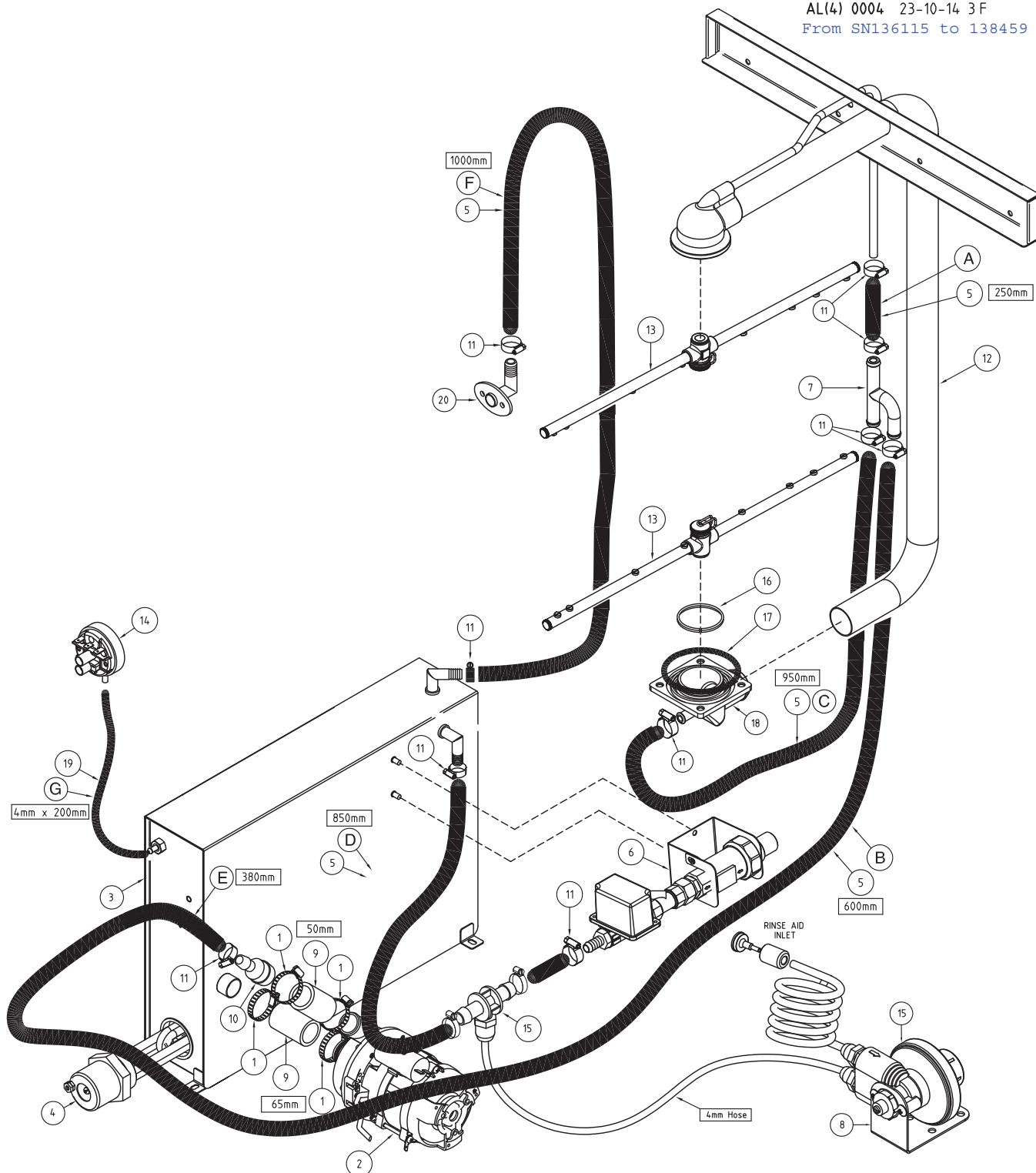
ITEM	CODE	DESCRIPTION	QTY
1	ASS16	HOSECLIP ASS16	4
2	600 30508	PUMP	1
3		AL BREAKTANK ASSY	1
4	3007	ELEMENT 6kW RINSE	2
5	600 60073	HOTOTAL HOSE 11mm X 19mm	1
6	400 10174	AL4 SOLENOID ASSEMBLY	1
7	400 90076	SS RINSE TEE	1
8	400 20182	PERISTALTIC PUMPS BRACKET	1
9	6196	HOSE 25mm 2 PLY RADIATOR	1
10	600 60225	25 x 12 MM SS REDUCING HOSE COUPLER	1
11	ASS6	HOSECLIP ASS6	10

ITEM	CODE	DESCRIPTION	QTY
12	352 10003	AL MANIFOLDS ASSY	1
13	815 10013	AL/PW1 RINSE ARM ASSY	1
14	400 10214	PRESSURE SWITCH BREAK TANK & DRAIN	1
15	600 30480	PERISTALTIC PUMP RA ADJUSTABLE	1
16	400 30190	SLIP RING BLACK ACETAL	1
17	ARP336	O-RING	1
18	400 90140	AL WASH TEE	1
19	3067	HOSE PRESSURE SW VACUUM 4mm	1
20	328 10022	M2 OVERFLOW TUBE ASSY	1
21	280 30003	TEE BRACKTON RINSE AID	1

WASHTECH AL(4) RINSE SYSTEM

AL(4) 0004 23-10-14 3 F

From SN136115 to 138459

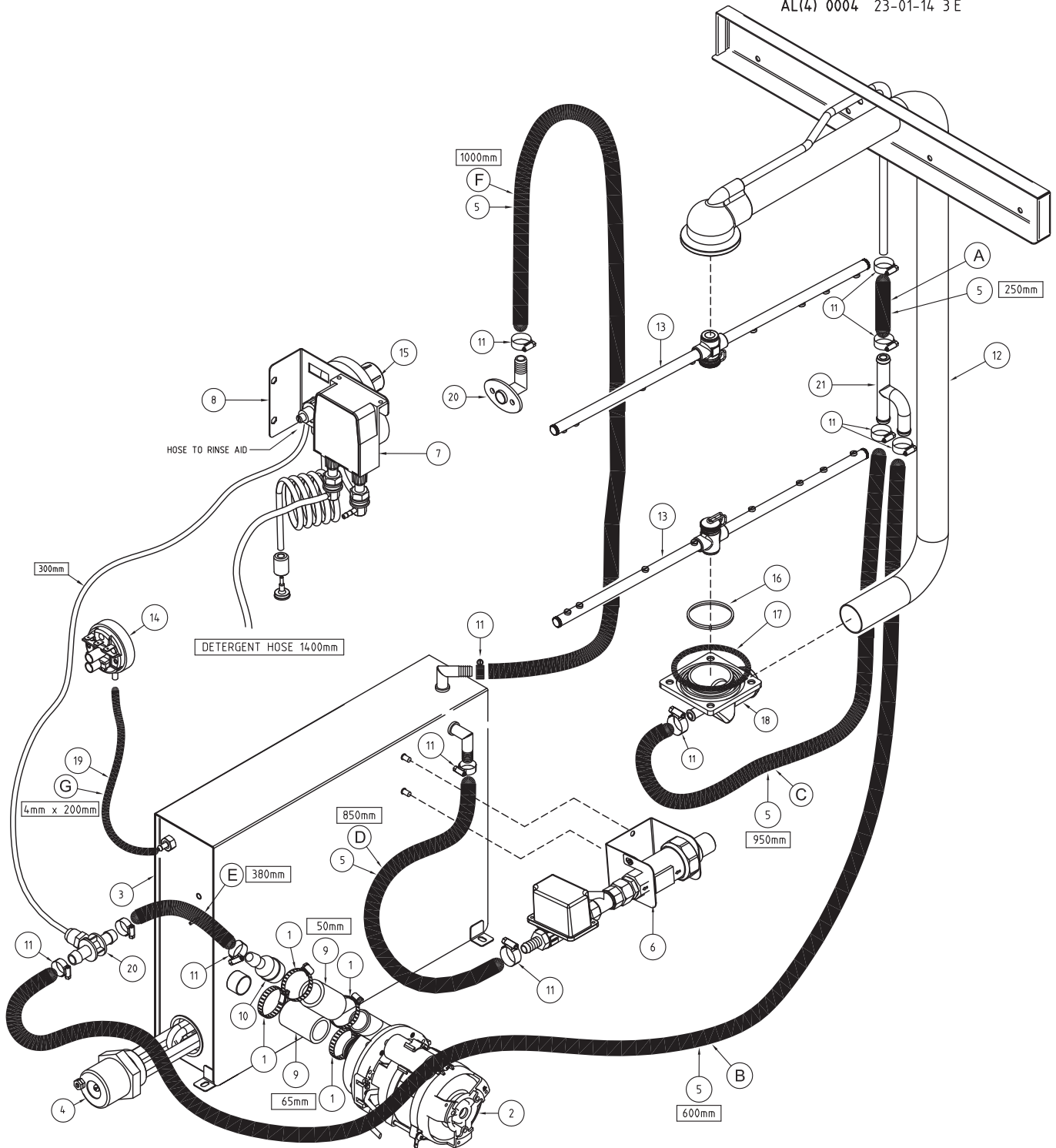


ITEM	CODE	DESCRIPTION	QTY
1	ASS16	HOSECLIP ASS16	4
2	600 30508	PUMP	1
3		AL BREAKTANK ASSY	1
4	3007	ELEMENT 6kW RINSE	2
5	600 60073	HOTOTAL HOSE 11mm X 19mm	1
6	400 10121	ASSY RINSE SOLENOID M2/AL/PW(W)	1
7	400 90076	SS RINSE TEE	1
8	329 20008	PASSTHRU RINSE FLUID INJECTOR BRACKET	1
9	6196	HOSE 25mm 2 PLY RADIATOR	1
10	600 60225	25 x 12 MM SS REDUCING HOSE COUPLER	1

ITEM	CODE	DESCRIPTION	QTY
11	ASS6	HOSECLIP ASS6	10
12	352 10003	AL MANIFOLDS ASSY	1
13	815 10013	AL/PW1 RINSE ARM ASSY	1
14	400 10214	PRESSURE SWITCH BREAK TANK & DRAIN	1
15	600 30324	RINSE AID INJECTOR KIT	1
16	400 30190	SLIP RING BLACK ACETAL	1
17	ARP336	O-RING	1
18	400 90140	AL WASH TEE	1
19	3067	HOSE PRESSURE SW VACUUM 4mm	1
20	328 10022	M2 OVERFLOW TUBE ASSY	1

WASHTECH AL(4) RINSE SYSTEM

AL(4) 0004 23-01-14 3 E



ITEM	CODE	DESCRIPTION	QTY
1	ASS16	HOSECLIP ASS16	4
2	600 30327	WASH PUMP GM	1
3		AL BREAKTANK ASSY	1
4	3007	ELEMENT 6kW RINSE	2
5	600 60073	HOTOTAL HOSE 11mm X 19mm	1
6	400 10121	ASSY RINSE SOLENOID M2/AL/PW(W)	1
7	600 30094	PERI PUMP 15L/H SEKO-KIT	1
8	328 20037	BRACKET SEKO RINSE AID PUMPS	1
9	6196	HOSE 25mm 2 PLY RADIATOR	1
10	600 60225	25 x 12 MM SS REDUCING HOSE COUPLER	1

ITEM	CODE	DESCRIPTION	QTY
11	ASS6	HOSECLIP ASS6	10
12	352 10003	AL MANIFOLDS ASSY	1
13	815 10013	AL/PW1 RINSE ARM ASSY	1
14	400 10214	PRESSURE SWITCH BREAK TANK & DRAIN	1
15	600 30324	RINSE AID INJECTOR KIT	1
16	400 30190	SLIP RING BLACK ACETAL	1
17	ARP336	O-RING	1
18	400 90140	AL WASH TEE	1
19	3067	HOSE PRESSURE SW VACUUM 4mm	1
20	328 10022	M2 OVERFLOW TUBE ASSY	1
21	400 90076	SS RINSE TEE	1

Rinse Pump

From SN157060

Part Number

600 30400

Function

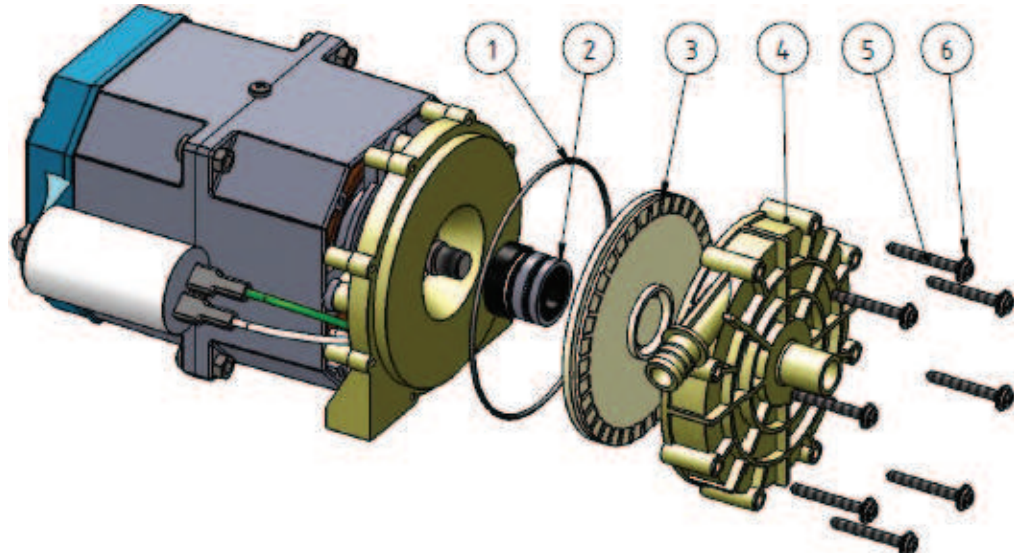
The pump is fitted after a hot water inlet solenoid valve to boost the pressure of hot water supply. It pumps hot water through the boiler to the rinse arms, providing a hot rinse cycle.

Description

Electric Pump R63

Power:	0.33Hp / 0.25kW	Amperes:	1.2 A
Voltage:	230 V	Capacitor:	8 uF
Frequency:	50 Hz	Speed:	2800 rpm

Diagram



ITEM	PART	DESCRIPTION
1	600 41181	O Ring
2	600 41182	Mechanical Seal
3	600 41183	Impeller
4	600 41203	Pump Housing
5		Screw
6		Washer

Replacement

Switch off the power to the machine.
Disconnect the wires from the pump connectors.
Remove M6 bolt that fastens the pump to the floor of the machine.
Release the hose clamps on the inlet and outlet pump hoses and remove the hoses.
Replace in reverse order.

Rinse Pump

Before SN157060

Part Number

600 30508

Function

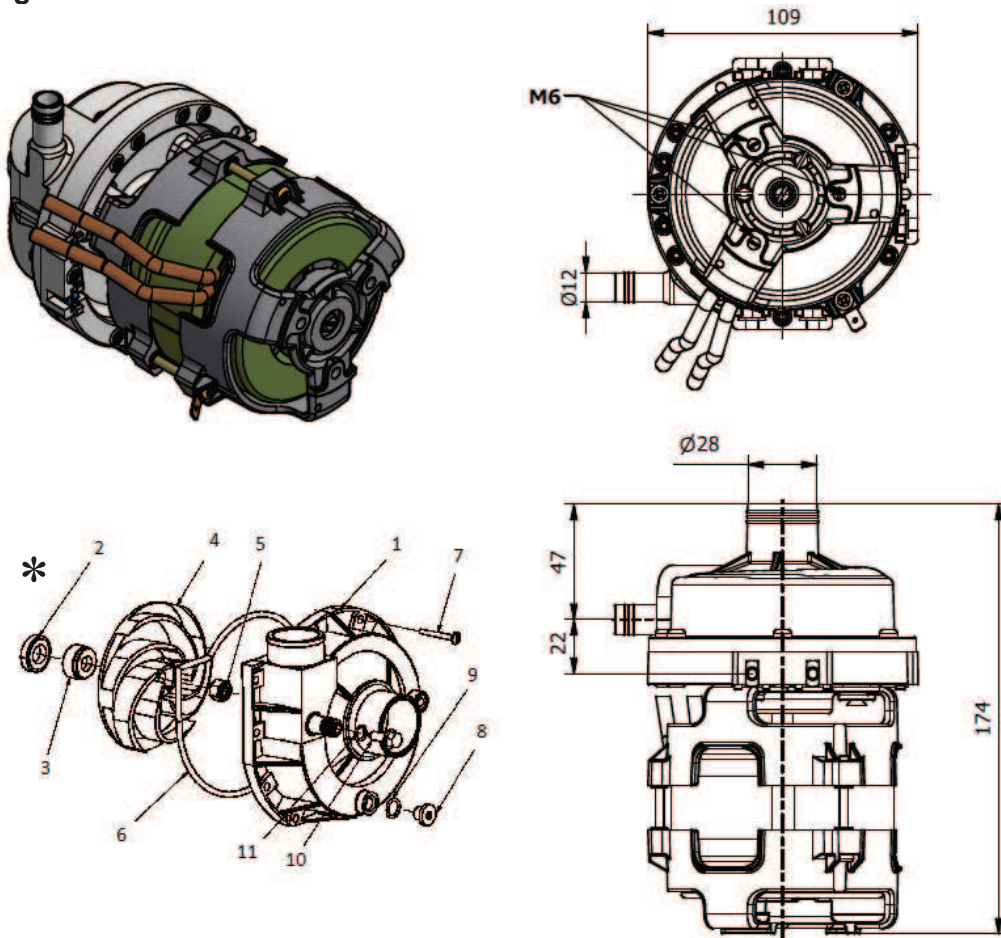
Pumps water from the rinse tank to the rinse arms providing a hot rinse cycle.

Description

Electric Pump CRC-R-DX

Power:	0.18 kW	Capacitor:	4 uF
Voltage:	230 V 50 Hz	IP:	X0
Amperes:	0.8 A	Speed:	2800 RPM

Diagram



*Exploded image is generic for illustration only – not a scale image of the actual part

ITEM	DESCRIPTION	PART NO:
2	Fixed Seal	600 41224
3	Rotating Seal	600 41223
4	Impeller	600 41225
6	Housing Gasket	600 41179
	Capacitor	600 30539

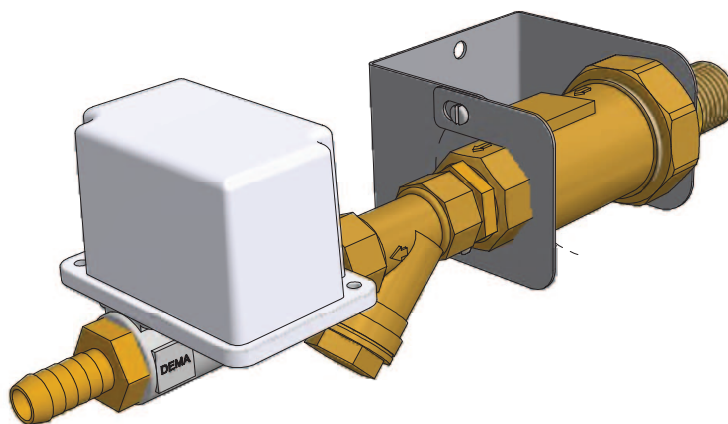
Replacement

Drain the rinse tank and switch off the power.
Disconnect the wires from the pump connectors.
Release the hose clamps on the inlet and outlet pump hoses and remove the pump.
Replace in reverse order.

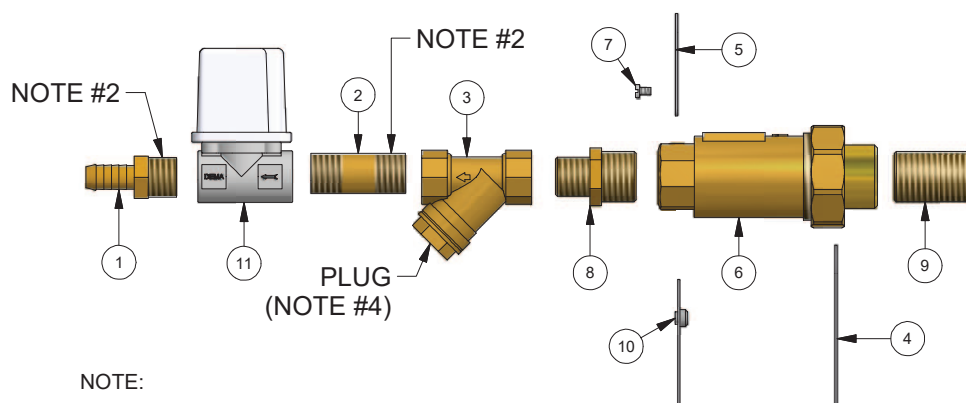
ASSY AL4 BREAK TANK SOLENOID

400 10174 6/05/2014 REV 1-A

ISO VIEW



EXPLODED PERSPECTIVE VIEW



NOTE:

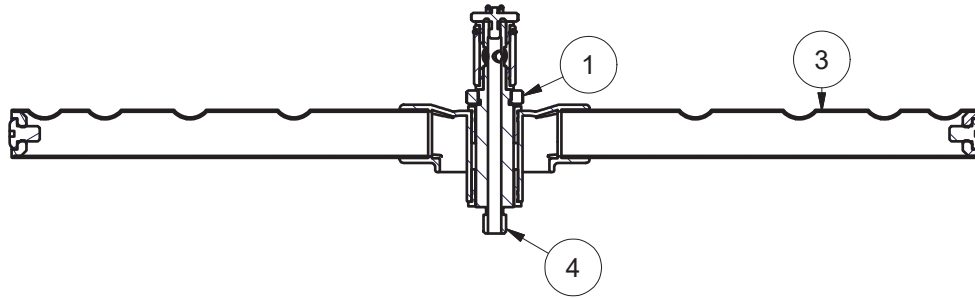
1. USE LOCTITE 262 ON THIS THREAD
2. USE A131 PERMABOND ON ALL JOINTS
3. ENSURE SOLENOID, LINE STRAINER AND DCV FLOW DIRECTIONS ARE AS SHOWN
4. ANGLE LINE STRAINER PLUG 45 DEGREE FORWARD TO ALLOW REMOVAL.

Parts List			
ITEM	PART NUMBER	DESCRIPTION	QTY
1	6153	TAILPIECE 1/2"x1/2" BSP	1
2	600 60003	NIPPLE 15mm x 50mm BRASS BARREL	1
3	600 60104	SHB&H 1/2" LINE STRAINER	1
4	400 20107	DCV BOTTOM BRACKET	1
5	400 20108	DCV TOP BRACKET	1
6	600 60108	DUAL CHECK VALVE	1
7	8800	MS PAN POZI ZP M4x6	2
8	6041	NIPPLE HEX REDUCING 20x15mm	1
9	600 60111	3/4" x 3/4" BRASS NIPPLE FOR DCV	1
10	8225	HANK BUSH 304 SS M4	2
11	600 30403	SOLENIID VALVE w COVER	1

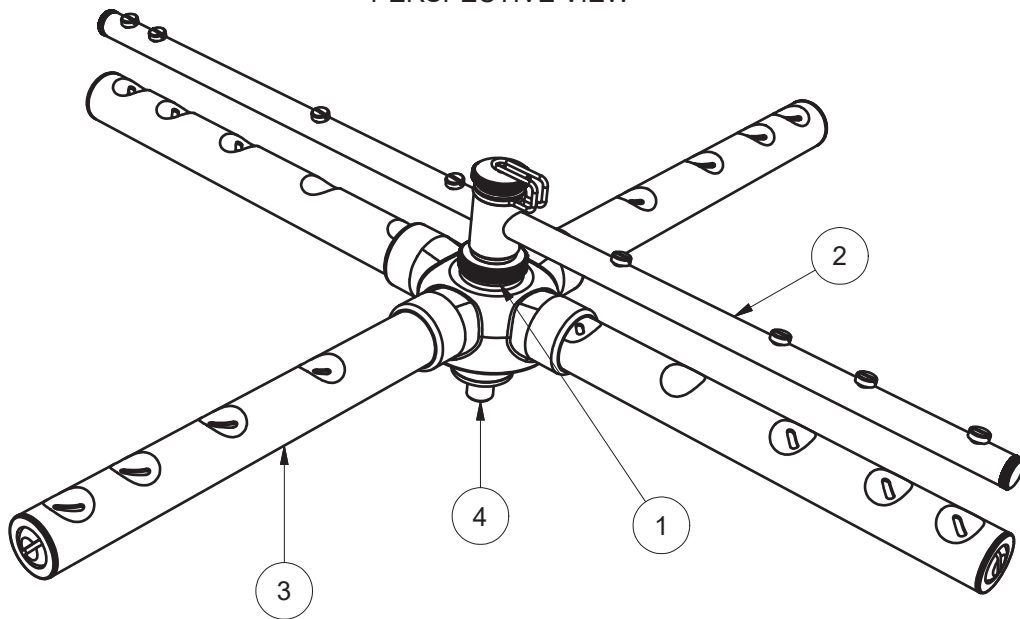
AL(3) ASSY WASH ARM

351 10001 18/10/2006 REV 3-A

SECTION VIEW A-A



PERSPECTIVE VIEW



Parts List			
ITEM	PART NUMBER	DESCRIPTION	QTY
1	280409C	LOCKNUT M18	1
2	815 10013	AL/AL8/PW1 RINSE ARM ASSY	1
3	400 10077	AL/AL8 WASH ARM ASSY	1
4	400 30014	SPINDLE AL WASH	1

RINSE TANK 150MM SS 6KW ELEMENT ASSEMBLY

400 10354 11/06/2018 REV 1-A
From SN157060



Parts List			
ITEM	PART NUMBER	DESCRIPTION	QTY
1	600 30088	TSTAT TY60/R-110C [WITH E BKT]	2
2	600 30496	ELEMENT RINSE 6kW	1
3	600 80023	NUT SS M8	3
4	8568	WASHER SPRING SS 304 M8	3

AL4 RINSE TANK ASSEMBLY V3

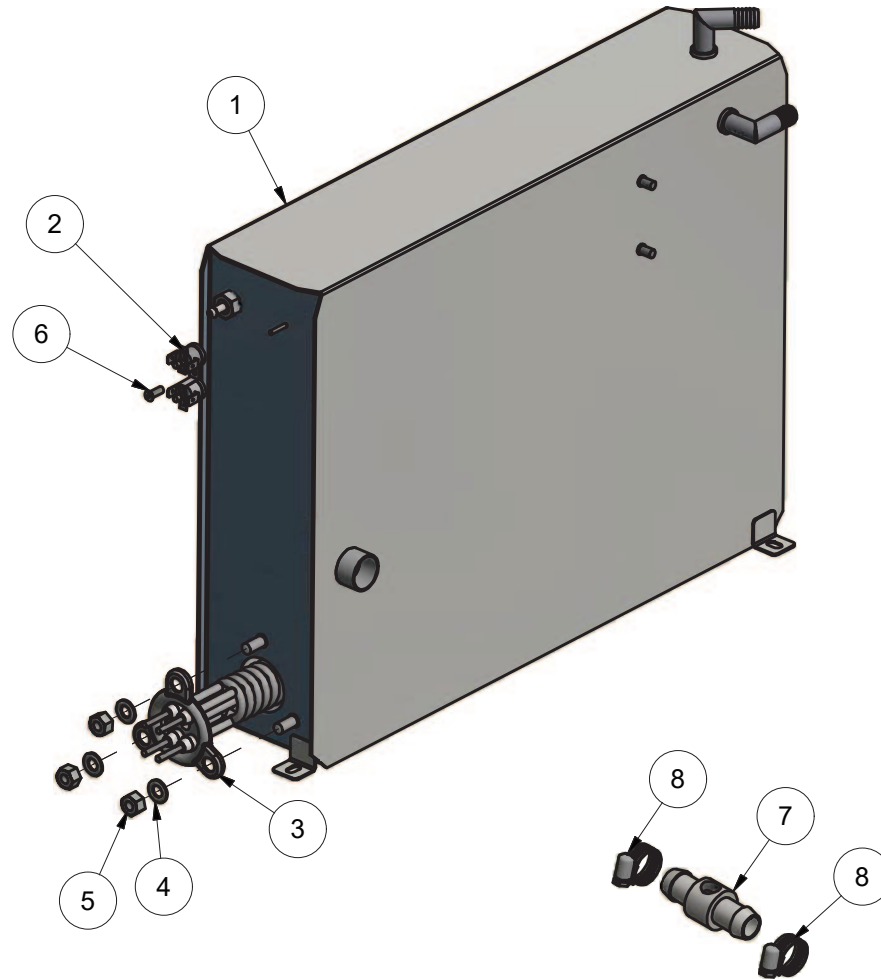
9/09/2016

REV 1-A

From SN148765

To SN157059

EXPLODED VIEW



Spares supplied with fittings shown

Parts List			
ITEM	PART NUMBER	DESCRIPTION	QTY
1	KIT0440084	ROUND BREAKTANK RETROFIT KIT	1
2	600 30088	TSTAT TY60/R-110C [WITH E BKT]	2
3	600 30496	ELEMENT RINSE 6kW	1
4	600 80022	WASHER FL SS 304 M8x16x1.2mm	3
5	600 80063	NUT NYLOC SS M8	3
6	600 80064	STANDOFF M3 x 12	1
7	280 30003	TEE BRACON RINSE AID	1
8	ASS05	ASS05 HOSECLIP	2

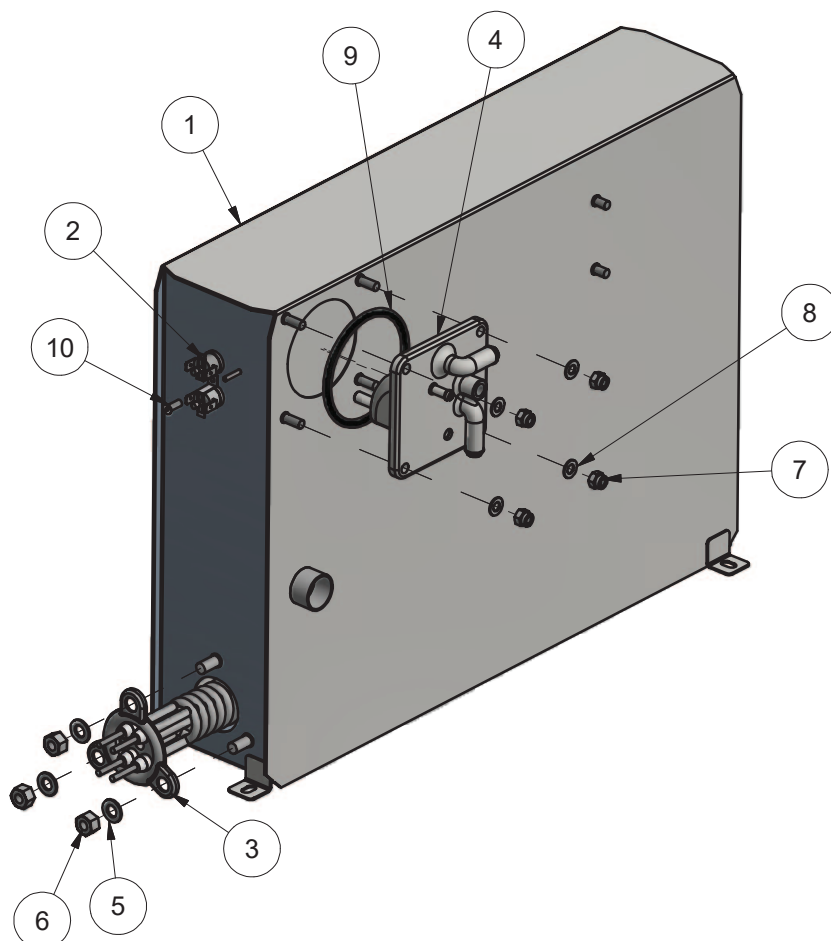
AL RINSE TANK ASSEMBLY V2

4/05/2016

REV 3-B

From SN144831
To SN148764

EXPLODED VIEW



Parts List			
ITEM	PART NUMBER	DESCRIPTION	QTY
1	KIT0440084	ROUND BREAKTANK RETROFIT KIT	1
2	600 30088	TSTAT TY60/R-110C [WITH E BKT]	2
3	600 30496	ELEMENT RINSE 6kW	1
4	400 10232	BREAKTANK INLET \ OVERFLOW \ RAI \ BELL CASTING ASSY	1
5	600 80022	WASHER FL SS 304 M8x16x1.2mm	3
6	600 80063	NUT NYLOC SS M8	3
7	600 80013	NUT NYLOC M6 S/S	4
8	8504	WASHER FL SS 304 M6 x 12.5 x 0.9	4
9	ARP336	O-RING ARP336	1
10	600 80064	STANDOFF M3 x 12	1

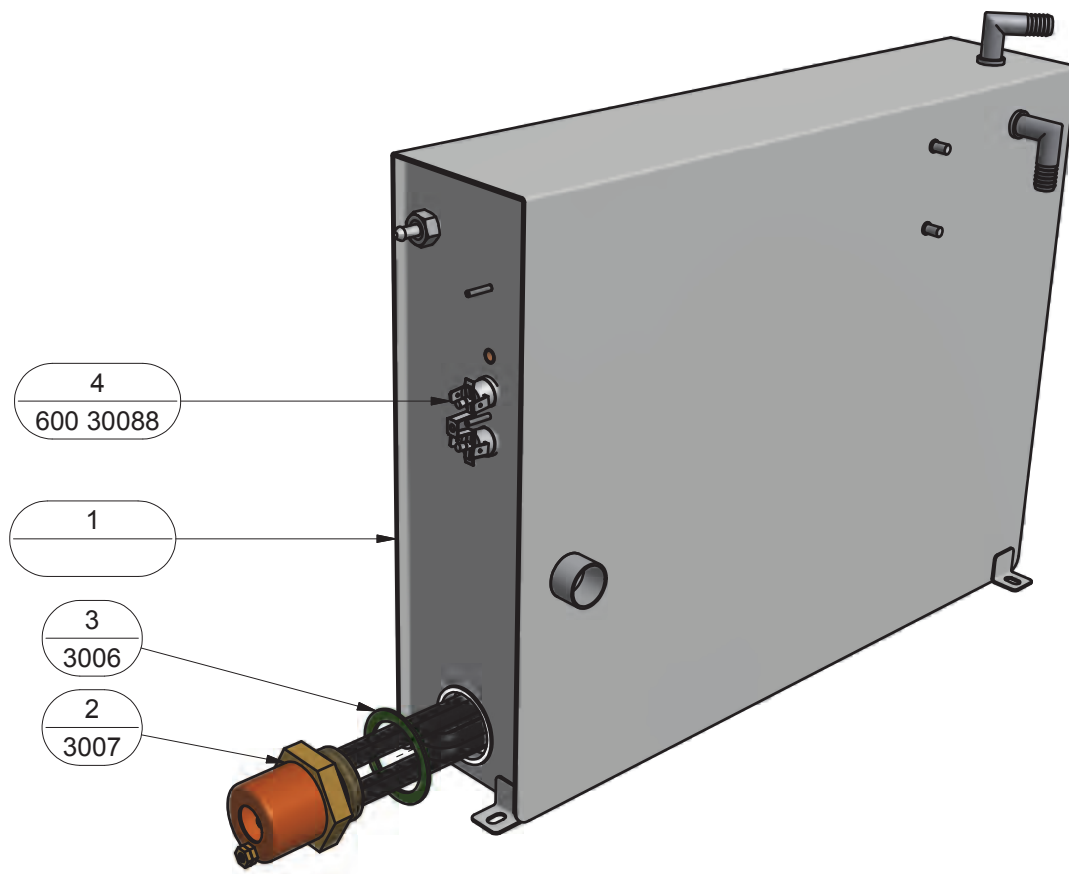
AL BREAKTANK ASSY

23/01/2014

REV 3-C

To SN144830

EXPLODED VIEW

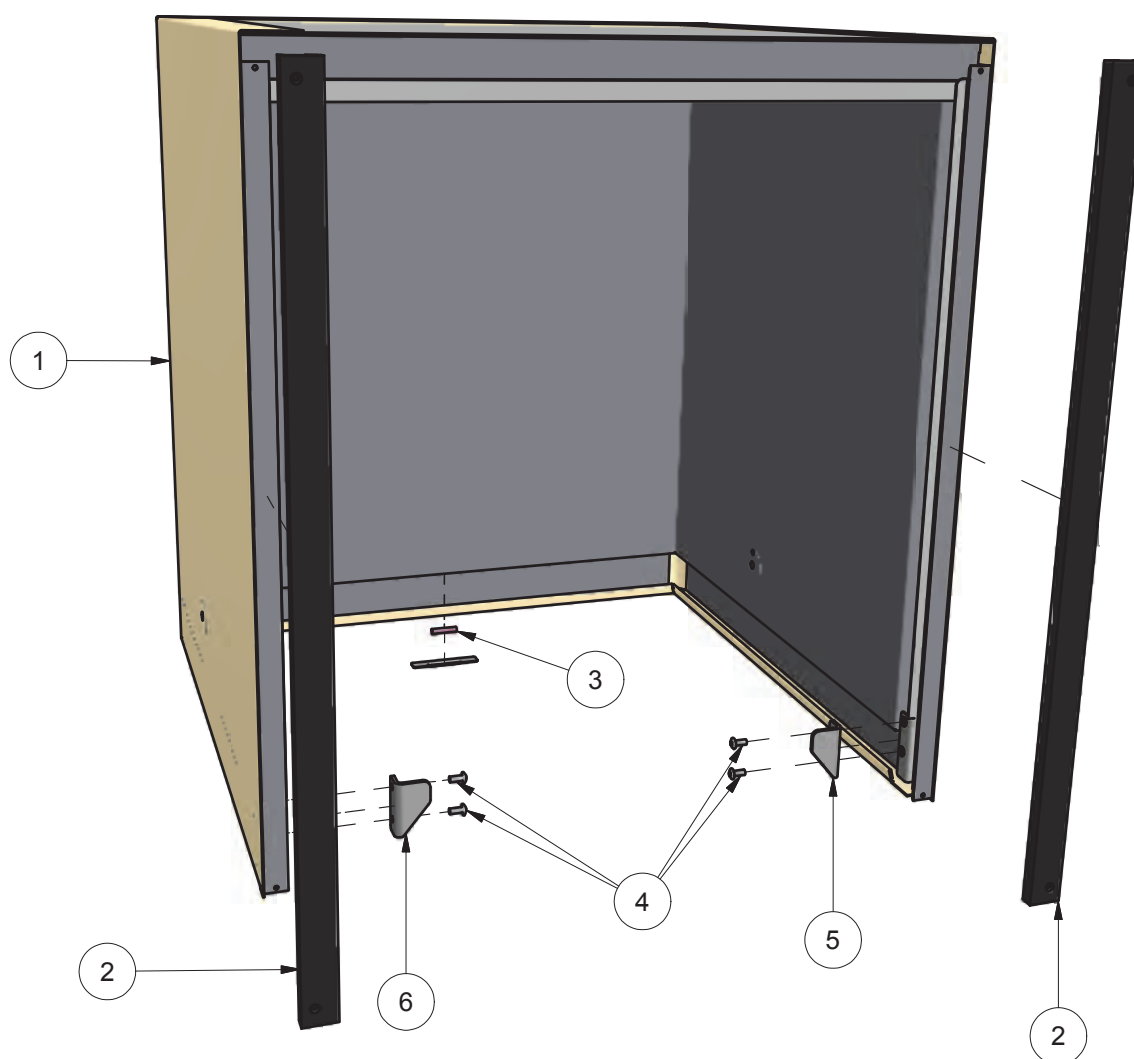


Parts List			
ITEM	PART NUMBER	DESCRIPTION	QTY
1	KIT0440084	ROUND BREAKTANK RETROFIT KIT	1
2	3007	6KW RINSE ELEMENT	1
3	3006	ELEMENT GASKET	1
4	600 30088	TSTAT TY60/R-110C [WITH E BKT]	2

AL(4) INSULATED DOOR ASSY

352 10008 21/10/2013 REV 3-A

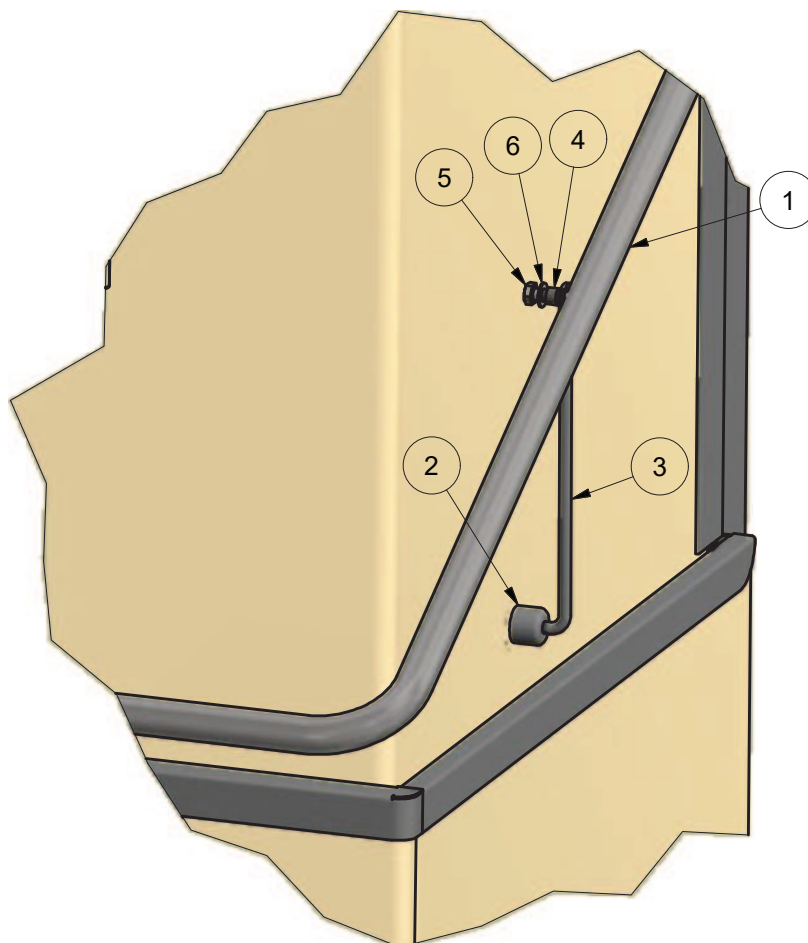
REAR VIEW



Parts List			
ITEM	PART NUMBER	DESCRIPTION	QTY
1	REF	DOOR ASSY	1
2	326 30004	M2 DOOR SLIDE	2
3	600 30257	DIA 6x30mm MAGNET	1
4	600 80017	M5 x 12 SS TRUSS HEAD SCREW	4
5	352 20015	M2/AL DOOR STOP LH	1
6	352 20016	M2/AL DOOR STOP RH	1

AL(4) DOOR HANDLE & LINK ASSY

352 10001 19/11/2015 REV 1-A



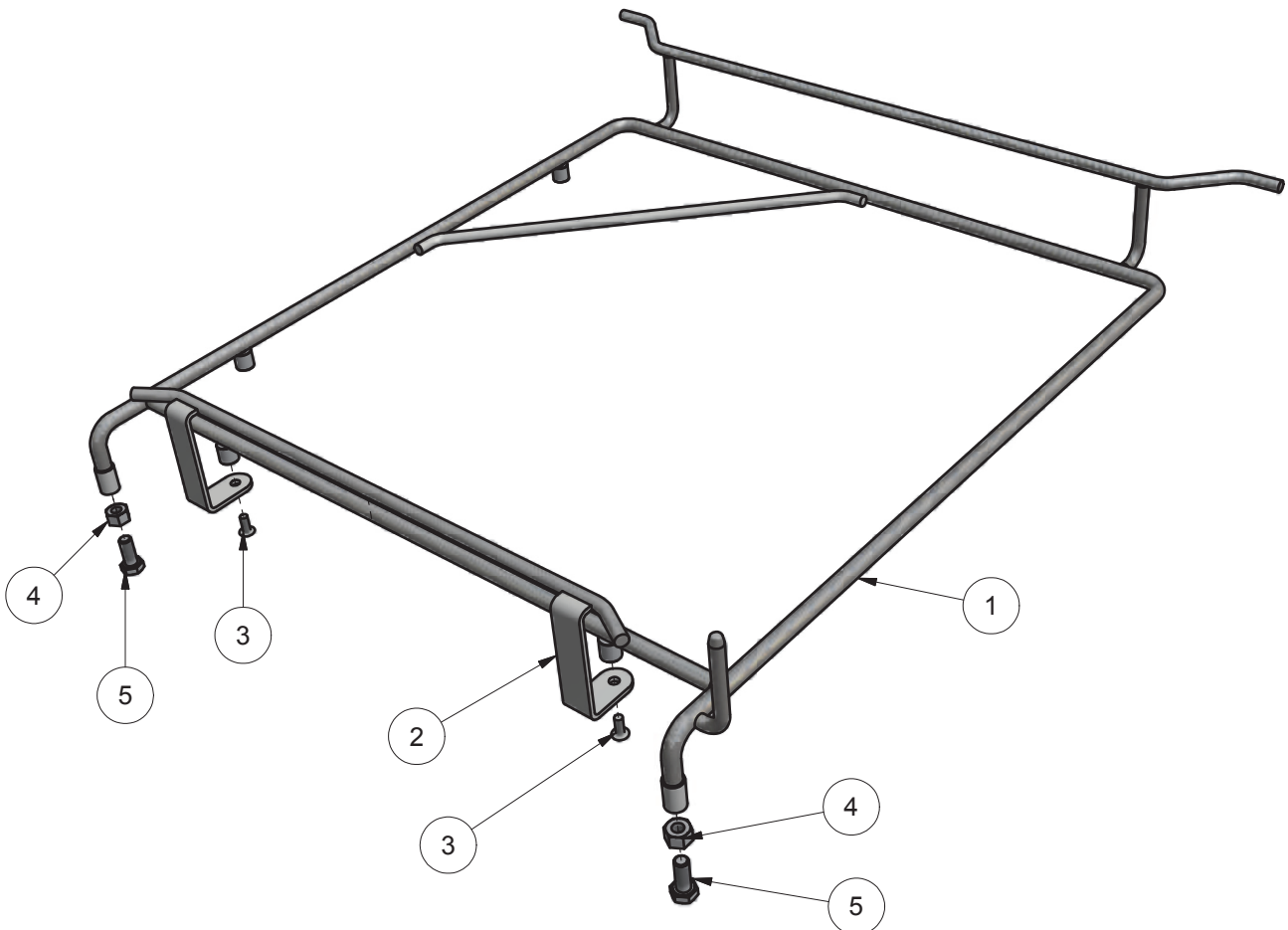
Parts List			
ITEM	PART NUMBER	DESCRIPTION	QTY
1	352 10083	AL(4) ASSY DOOR HANDLE REPLACEMENT	1
2	400 30225	PASSTHROUGH DOOR STAY MOUNT	2
3	400 10206	PASSTHROUGH DOOR STAY ASSY	2
4	1658	SPACER	2
5	600 80030	M8x20 HEX HD SET SCREW T304	2
6	600 80022	WASHER FL SS 304 M8x16x1.2mm	2

AL RACKSLIDE

352 10079 19/11/2014 REV 3-C

From Serial No: 138460

PERSPECTIVE VIEW

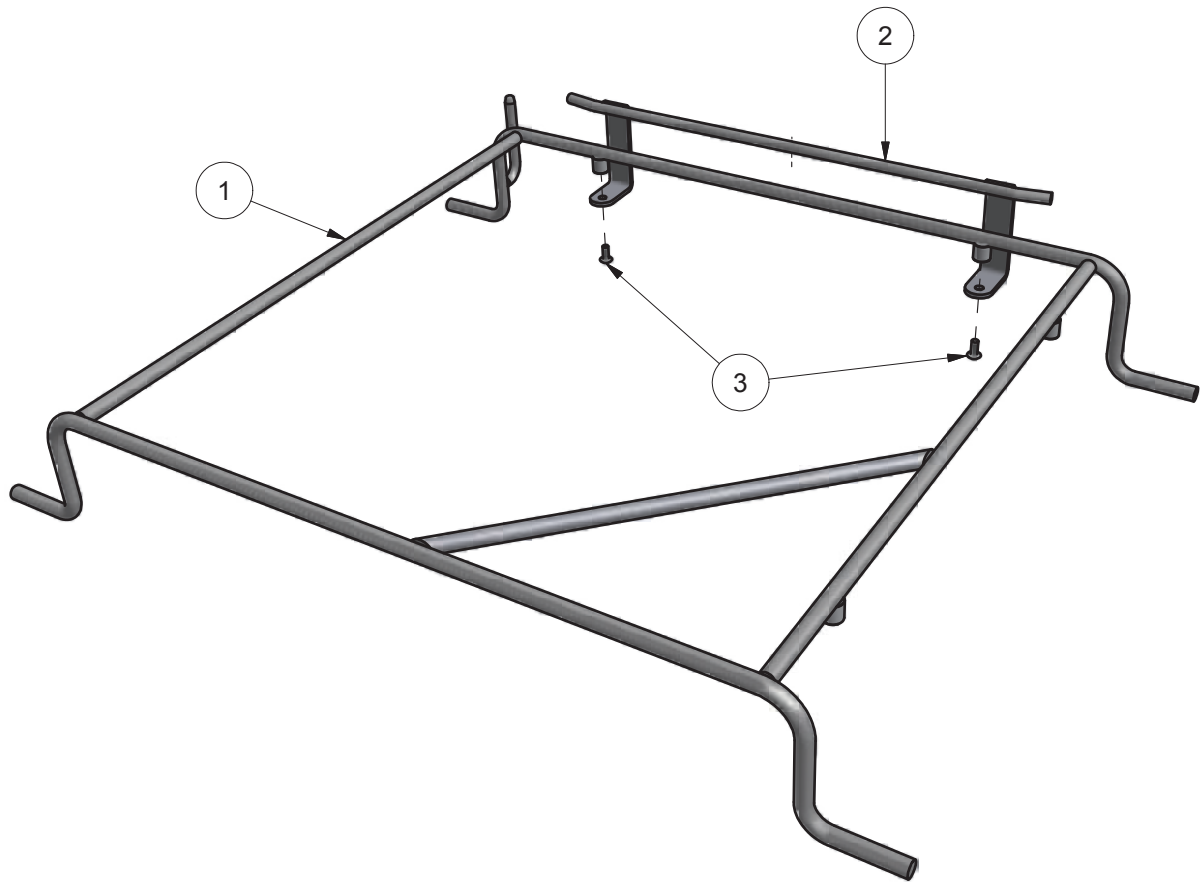


Parts List			
ITEM	PART NUMBER	DESCRIPTION	QTY
1	352 10081	AL RACKSLIDE ASSEMBLY	1
2	328 10008	M2 RACK GUIDE ROD ASSEMBLY	1
3	600 80017	M5 x 12 SS TRUSS HEAD SCREW	2
4	600 80063	NUT NYLOC SS M8	2
5	600 80030	M8x20mm Hex-Head Bolt	2

AL RACKSLIDE ASSY

352 10029 10/12/2013 REV 3-A

PERSPECTIVE VIEW

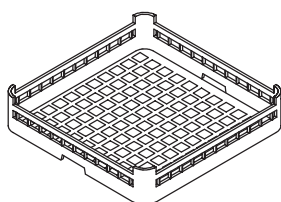


Parts List			
ITEM	PART NUMBER	DESCRIPTION	QTY
1	352 10010	AL(4) RACKSLIDE ASSEMBLY	1
2	328 10008	M2 RACK GUIDE ROD ASSEMBLY	1
3	600 80017	M5 x 12 SS TRUSS HEAD SCREW	2

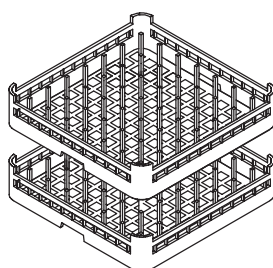
Accessories

AL(4)W ACCESSORIES

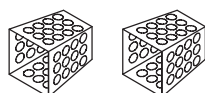
AL(4) ACW 4/08/15 1B



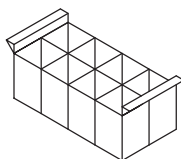
600 70029
CUPRACK 500mm OPEN



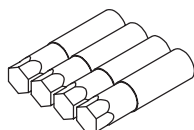
600 70028
DISHRACK 500mm 9 x 9 DIVISION



C660503
CUTLERY CONTAINER G



C660508
CUTLERY BASKET CP8 for 500mm



600 90154
SS LEG (63D x 225-325mm x M12)



600 60080
2M S/S HOSE

Information supplied in this manual is copyright.
No part of this work may be reproduced or copied
in any form or by any means, electronic or
mechanical without the express permission of the
author/publisher

Distributed in Australia by Moffat Pty Limited



740 Springvale Road
Mulgrave 3170
Victoria
Australia



SPARES
WEBSTORE

spares.moffat.com.au



1300 263 107



sparesinfo@moffat.com.au

ISO9001

All Washtech products are designed and
manufactured by Washtech using the
internationally recognised ISO9001 quality
management system, covering design,
manufacture and final inspection, ensuring
consistent high quality at all times.

In line with policy to continually develop and
improve its products, Washtech Ltd reserves the
right to change specifications and design without
prior notice.

an Ali Group Company



The Spirit of Excellence