

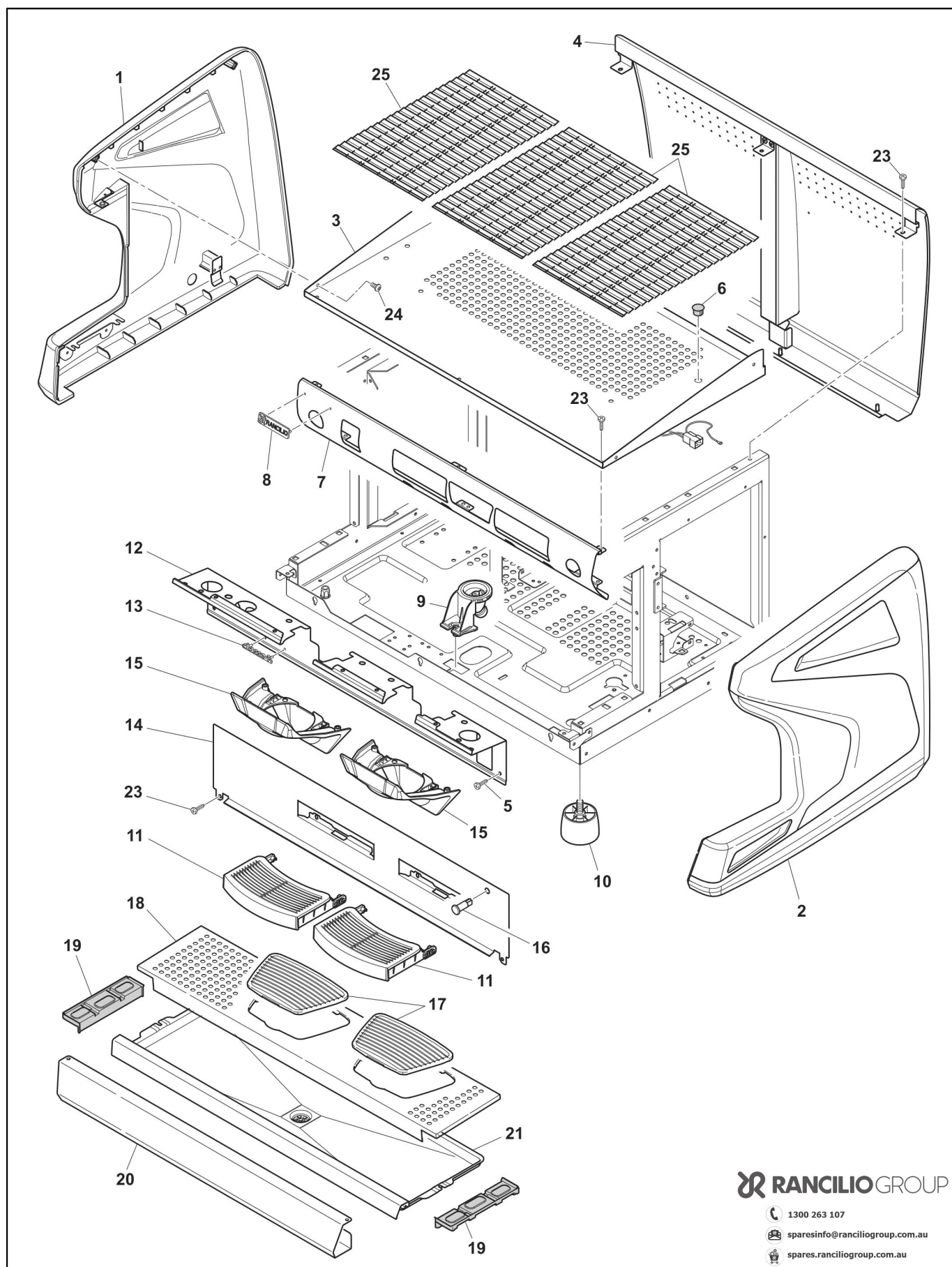
# CLASSE 7 USB/16 TALL



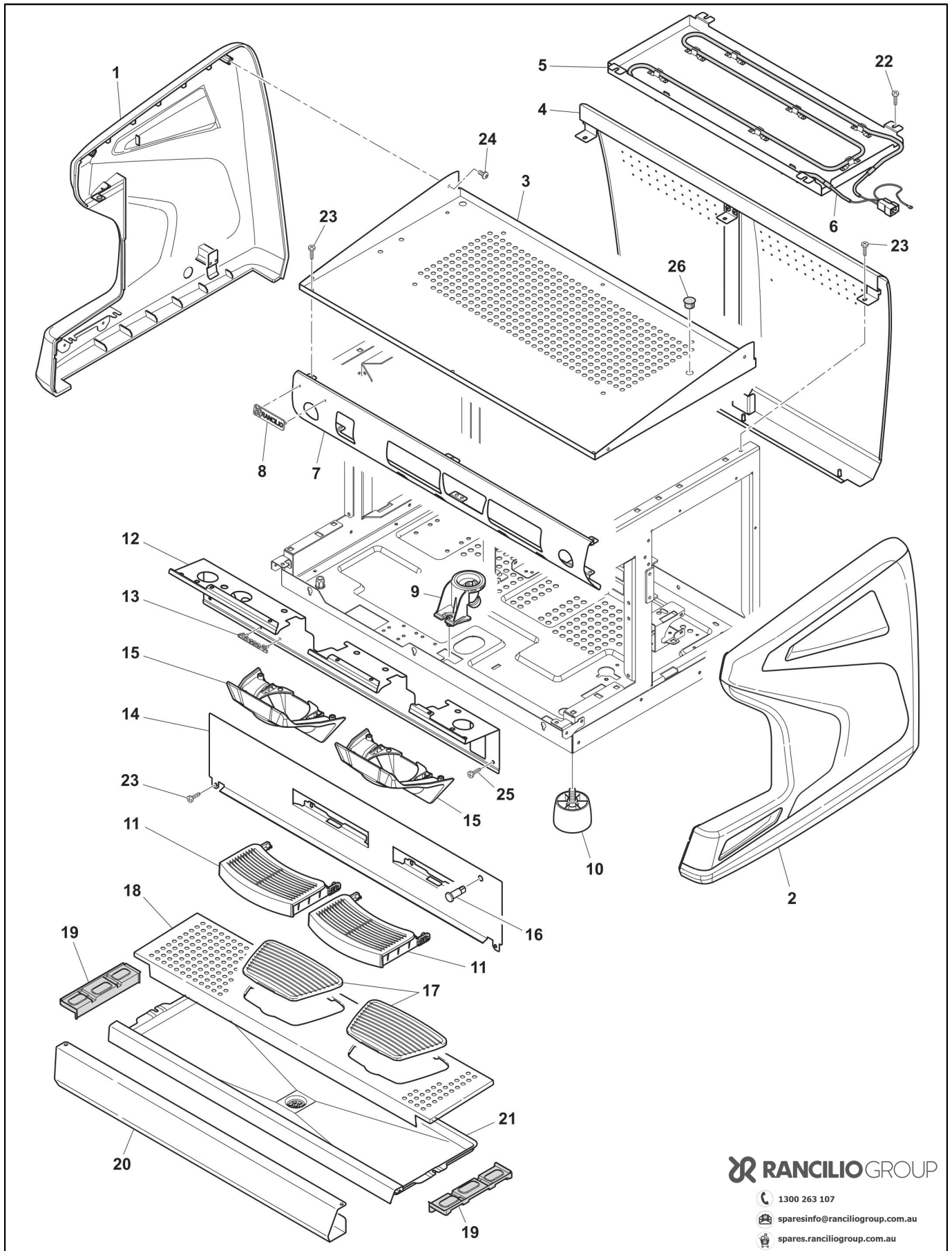
CLASSE 7

## Index

Table 1003_1 - CARROZZERIA TALL dal .....	4
Table 1003 - HOUSING TALL.....	6
Table 2016 - HYDRAULIC CIRCUIT USB.....	8
Table 2019 - GRUPPO EROGAZIONE SB.....	10
Table 2017 - IMPIANTO IDRAULICO SB USB.....	12
Table 2004 - BREWING GROUP 110-220V.....	14
Table 2006 - Water spout .....	16
Table 2007 - STEAM TAP.....	18
Table 2003 - BOILER/MOTOR PUMP.....	20
Table 3006 - ELECTRIC/ELECTRONIC PARTS USB.....	22
Table 4000 - Clever Steam Tap .....	24
Alphanumeric index.....	26

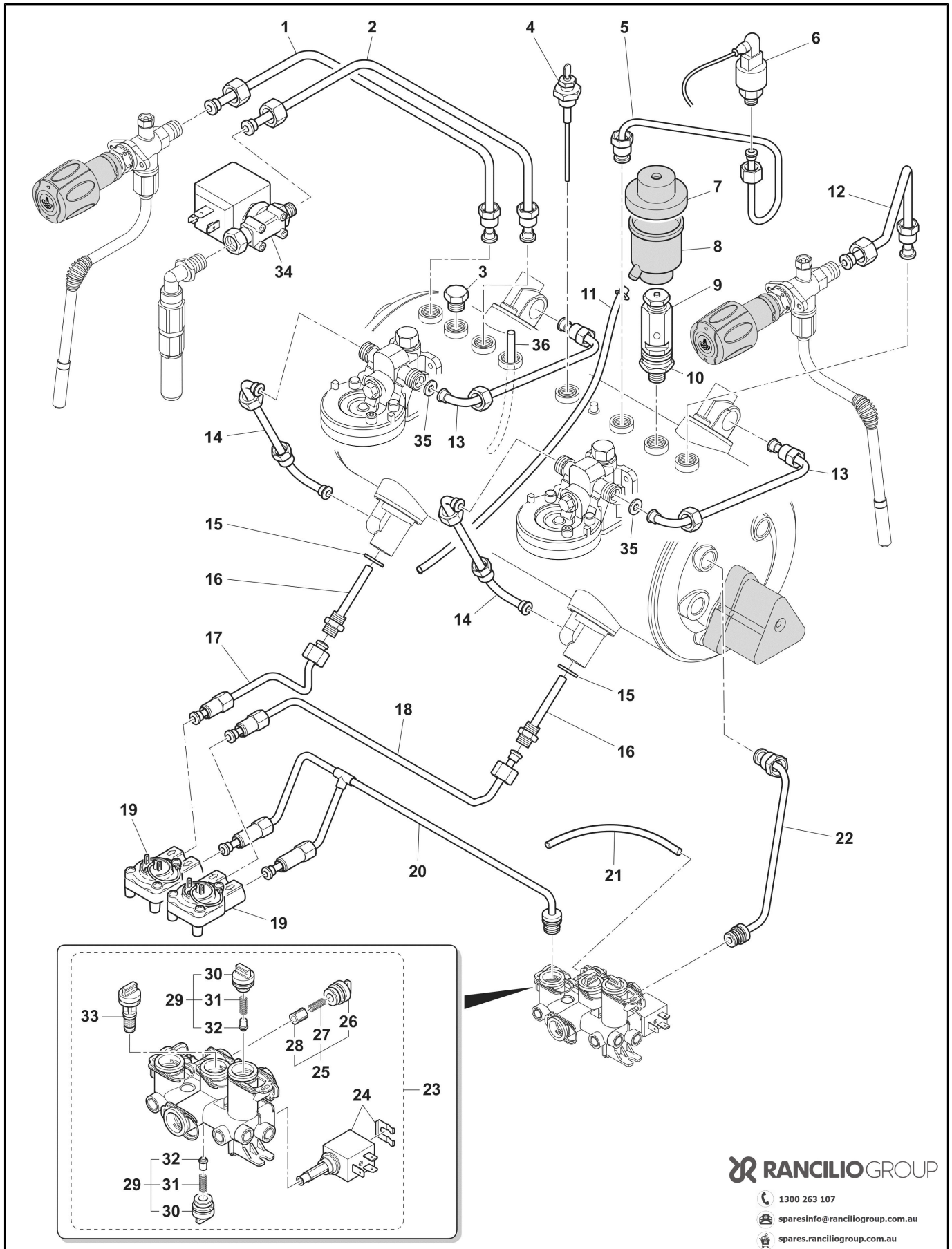


POS.	CODE	DESCRIPTION	NOTES
1	10701188	Side Panel Left Black Classe 5-7/16	
	10701260	Side Panel Left White Classe 5-7/16	
2	10701187	Side Panel Right Black Classe 5-7/16	
	10701259	Side Panel Right White Classe 5-7/16	
3	10110427	Wiring For Cupwarmer Reducer	
	10701492	Sticker Cup Warmer 2Gr Classe 5/7 Assy.	
	10701493	Sticker Cup Warmer 3Gr Classe 5/7 Assy.	
	32332281	Top Lid C5 2Gr	
	32332282	Top Lid C5 3Gr	
4	32331992	Rear Panel 2Gr Classe 7/16	
	32331993	Rear Panel 3Gr Classe 7/16	
5	37154212	Screw 4,2X13	
6	38221007	Cap Diam.11	
7	32331931	Control Panel 2Gr Classe 7 Usb	
	32331932	Control Panel 3Gr Classe 7 Usb	
8	42200121	Rancilio Plate Mm 70	
9	38120578	Drain Tray Canalizer	
10	38123568	Machine Foot	
	38123852	Riser For Machine Foot	
11	10701331	Plate Tall Assy.	
12	32332086	Upper Front Panel Compact Classe 7 Tall	
	32332087	MASCHERINA SUP.3GR.C7 TALL-AI-	
13	42200131	Plate C7	
14	32332084	Lower Front Panel Compact Classe 7 Tall	
	32332085	Lower Front Panel 3Gr Classe 7 Tall	
15	38120285	Group Cover C7 Tall	
16	34030110	Round Orange Lamp	
17	38120591	Cup Tray Grid Black	
18	32331991	Cup Grate 3Gr Classe 7/16	
19	38120286	Side Cup Tray Support Mc/15	
20	32331938	Lower Panel 2Gr Classe 7/16	
	32331939	Lower Panel 3Gr Classe 7/16	
21	10781366	Drain Tray 2Gr Classe 7/16	
	10781367	Drain Tray 3Gr Classe 7/16	
23	37154212	Screw 4,2X13	
24	37030408	Screw M 4 X 8	
	37030521	Screw M5X12	
25	37154212	Screw 4,2X13	
	38123921	Heating Cups Grate	



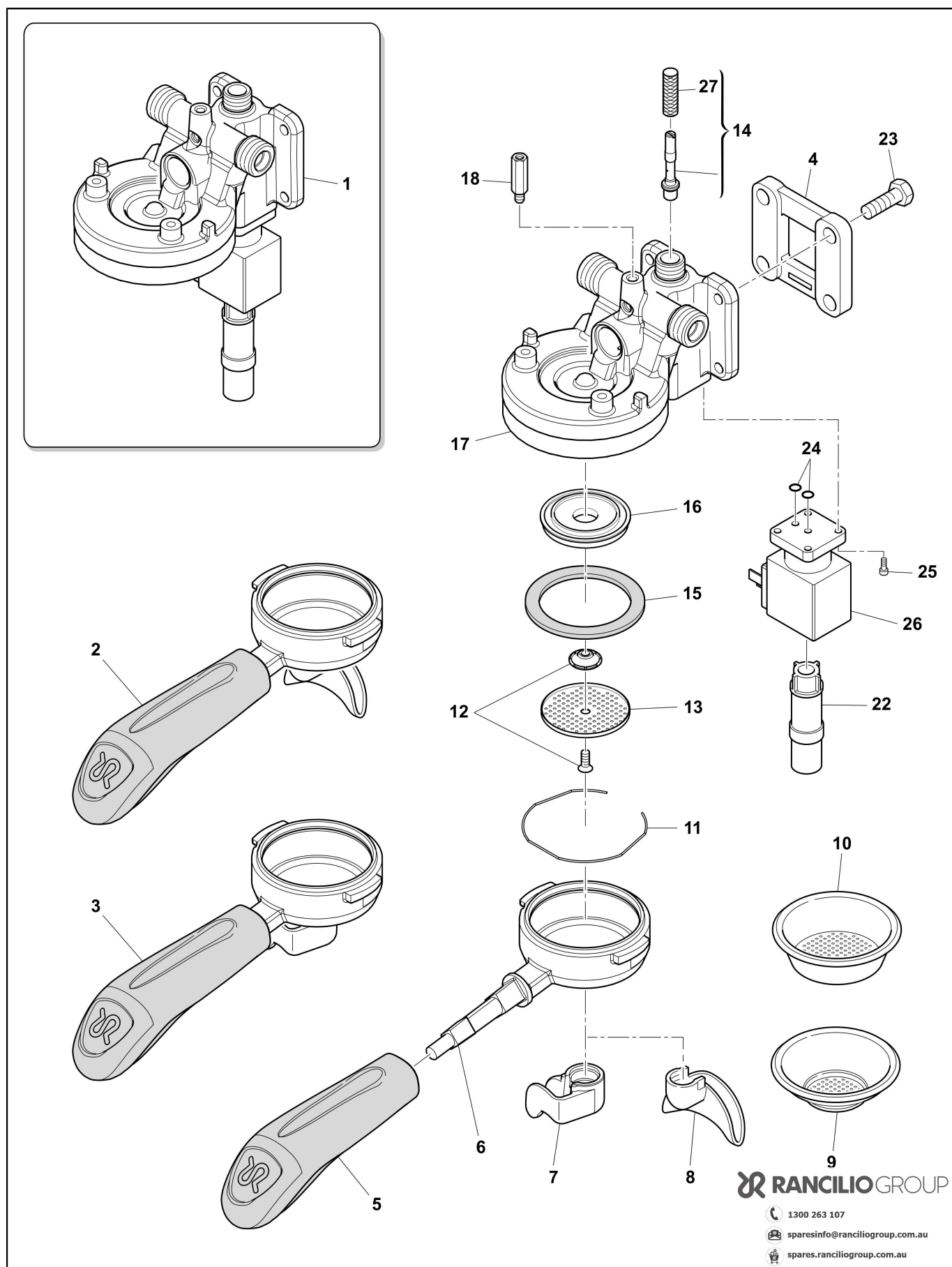


POS.	CODE	DESCRIPTION	NOTES
1	10701188	Side Panel Left Black Classe 5-7/16	
	10701260	Side Panel Left White Classe 5-7/16	
2	10701187	Side Panel Right Black Classe 5-7/16	
	10701259	Side Panel Right White Classe 5-7/16	
3	32331957	TOP LID 2GR CLASSE 5-7/16	
	32331958	TOP LID 3GR CLASSE 5-7/16	
4	32331992	Rear Panel 2Gr Classe 7/16	
	32331993	Rear Panel 3Gr Classe 7/16	
5	10701319	Kit Cupwarmer+Screws 2Gr	
	10701320	Kit Cupwarmer+Screws 3Gr	
6	33122002	Cup-Warmer Resistance 230V 2Gr	
	33122003	Cup-Warmer Resistance 230V 3Gr	
7	32331931	Control Panel 2Gr Classe 7 Usb	
	32331932	Control Panel 3Gr Classe 7 Usb	
8	42200121	Rancilio Plate Mm 70	
9	38120578	Drain Tray Canalizer	
10	38123568	Machine Foot	
	38123852	Riser For Machine Foot	
11	10701331	Plate Tall Assy.	
12	32332086	Upper Front Panel Compact Classe 7 Tall	
	32332086	Upper Front Panel Compact Classe 7 Tall	
13	42200131	Plate C7	
14	32332084	Lower Front Panel Compact Classe 7 Tall	
	32332085	Lower Front Panel 3Gr Classe 7 Tall	
15	10701420	Led Light Classe 7	
	38120285	Group Cover C7 Tall	
16	34030110	Round Orange Lamp	
17	38120591	Cup Tray Grid Black	
18	32331990	Cup Grate 2Gr Classe 7/16	
	32331991	Cup Grate 3Gr Classe 7/16	
19	38120286	Side Cup Tray Support Mc/15	
20	32331938	Lower Panel 2Gr Classe 7/16	
	32331939	Lower Panel 3Gr Classe 7/16	
21	10781366	Drain Tray 2Gr Classe 7/16	
	10781367	Drain Tray 3Gr Classe 7/16	
22	37030521	Screw M5X12	
23	37154212	Screw 4,2X13	
24	37030408	Screw M 4 X 8	
25	37154212	Screw 4,2X13	
26	38221007	Cap Diam.11	

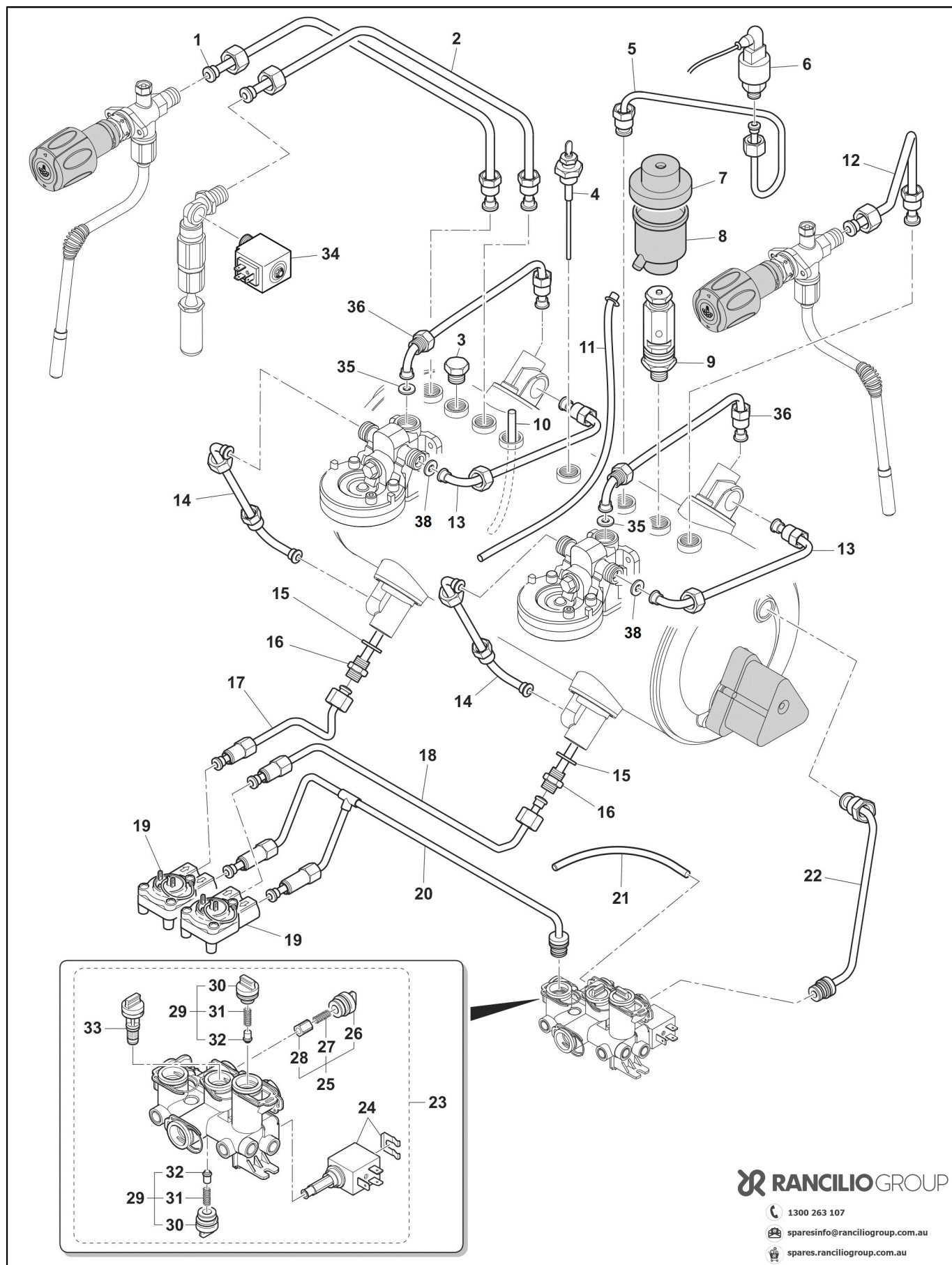


POS.	CODE	DESCRIPTION	NOTES
1	10043120	Pipe 8 X 6 F3/8-M3/8 Steam Pipe Left-Boiler Tall	
2	10043120	Pipe 8 X 6 F3/8-M3/8 Steam Pipe Left-Boiler Tall	
3	23000368	Cap 3/8 For Heater Exchanger	
	27350001	Gasket 3/8 X 1 Copper	
4	10701803	Kit Level Probe with nut	
5	10043219	Pipe 8 X 6 Pressure Sensor	
6	34200288	Pressure Sensor	
7	38123946	Security Valve Top	
8	38123947	Drain Tank Security Valve	
9	10060525	Safety Valve 1,9Bar 3/8	
	10060533	Safety Valve 1,9 Bar 3/8" 2019	
10	23000359	Safety Valve Extension	
11	38228002	Silicone Hose D. 9X6X560	
12	10043119	Pipe 8X6 F3/8-M3/8 Steam Tap Right Tall	
13	10044098	Pipe Circulation Mm275 F1/2-M1/2 Mc/15	
14	10044097	Pipe Circulation Mm225 F1/2-M1/2 Mc/15	
15	27350001	Gasket 3/8 X 1 Copper	
16	10042032	Injector Pipe 127	
17	10042153	Pipe 6 X 4 Central Flowmeter-Heat. Exch. F1/4-M1/4	
	10042154	Pipe 6X4 Flowmeter-Heat Exc. Cent.F1/4-M1/4 Tall	
18	10042155	Pipe 6X4 Flowmeter-Heat Exc. Right F1/4-M1/4 Tall	
19	34070060	Flowmeter Horiz. Connection	
20	10046079	Pipe Flowmeter 2Gr/15	
	10046080	Pipe Flowmeter 3Gr/15	
	36404052	O-Ring 9,16 X 2,62 F 3037	
21	38228002	Silicone Hose D. 9X6X560	
22	10042226	Pipe 6 X 4 Sn-M3/8 Boiler Inlet	
	36404052	O-Ring 9,16 X 2,62 F 3037	
23	10701245	Hydro Hub 120V 60Hz	
	10701246	Hydro Hub 230V	
24	69140014	Operator Kit 220-240V Hydraulic Module	
	69140015	Operator Kit 110-120V Hydraulic Module	
25	69140009	Pressure Relief Valve Hydraulic Module	
26	69140019	Pressure Relief Valve Cap	
27	69140010	Spring Pressure Relief Valve Hydraulic Module	
28	69140011	Plunger Pressure Relief Valve Hydraulic Module	
29	69140047	Kit Check Valve Complete	
30	69140016	Check Valve Cap	
31	69140018	Spring Check Valve	
32	69140048	Gummy+Bush	
33	69140006	Filter Hydraulic Module	
34	10702027	ASSIEME ELV ACQUA-230V-OT-CR+PROLUNGA C7	
35	23125009	Group Restriction 3.5Mm	
36	27120130	Hot Water Suction Pipe	

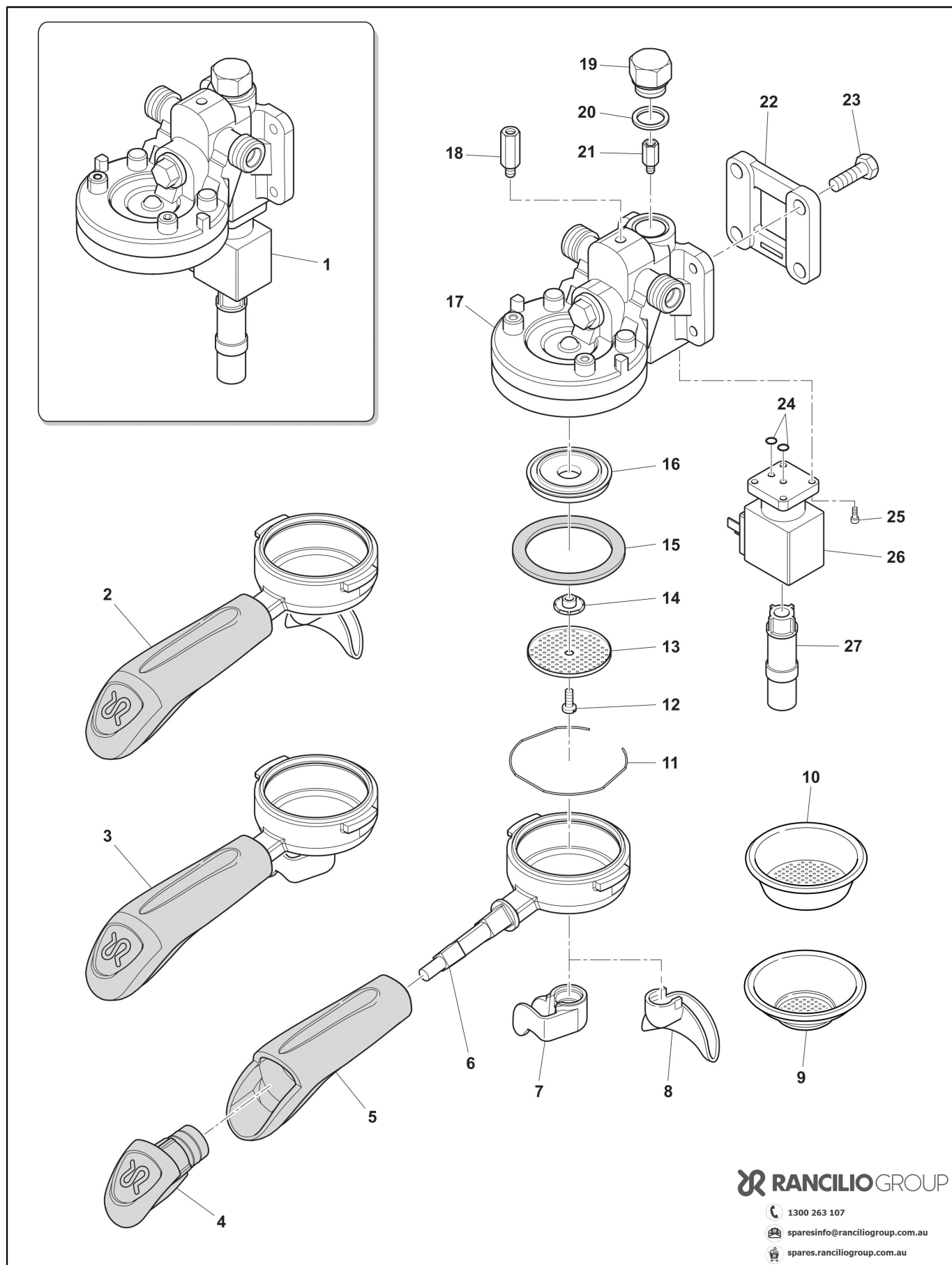




POS.	CODE	DESCRIPTION	NOTES
1	10051227	ASSIEME GRUPPO 230V GIGLEUR VERT/2019	
	10051229	ASSIEME GRUPPO 120V ETL GIGLEUR VERT/2019	
2	10071137R	Porta-Filter Rr/09 2Doses	
3	10071118R	Porta-Filter Rr/09 1Dose	
4	21300710	Group Space Sleeve	
5	10705091	Kit Filter Holder Tap 07	
6	20112211	Filter Holder Body Mc/09	
7	21102601	1 Cup Beak Mc/09	
8	21100801	2 Cup Beak Mc/09	
9	40100106	8Gr Filter Inox	
10	40100107	16Gr Filter Inox	
11	25105007	Filter Spring	
12	10701784	Group Jetbreaker with screw/20	
13	40200005	Shower Net	
14	10060622	ASSIEME GIGLEUR GRUPPO SB 0,6 NANEFLON A	
	10060623	ASSIEME GIGLEUR GRUPPO SB 0,8 NANEFLON A	
15	36301046	Group Gasket Perossidica Hp	
16	20200182	Shower Holder Brass	
17	20200301	Body Group	
18	23000311	Spacer M6 X 30	
22	10090002	Therm.Group Jetbreaker	
23	37040830	Screw M 8X30	
24	36402005	O-Ring Electrovalve	
25	37060413	Screw M 4 X 12	
26	34040149	Valve 3/2 220-240V UI (Sirai)	
	34040150	Valve 3/2 110-120V 60Hz UI (Sirai)	
27	32910008	filter net 6,2 x 22	

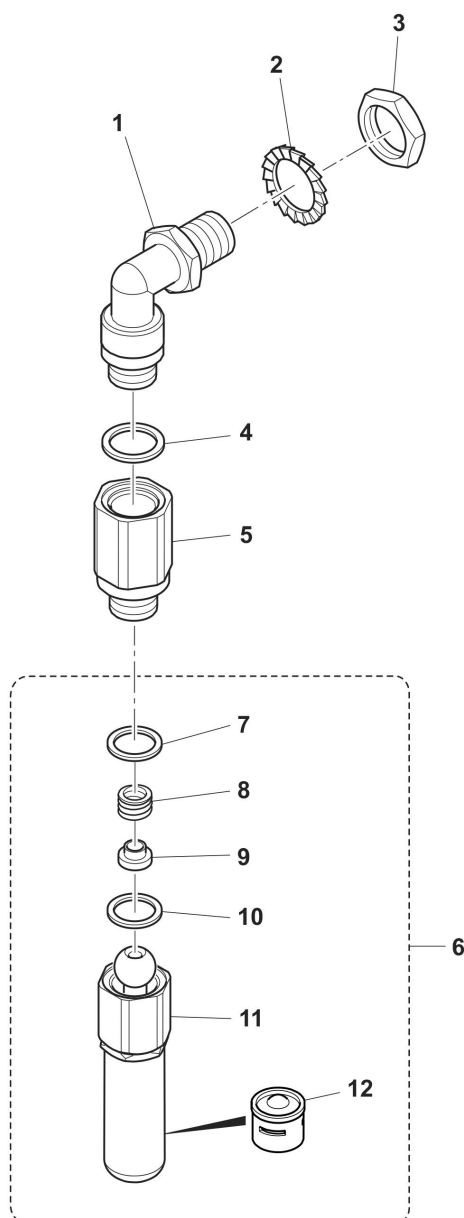


POS.	CODE	DESCRIPTION	NOTES
1	10043120	Pipe 8 X 6 F3/8-M3/8 Steam Pipe Left-Boiler Tall	
2	10043120	Pipe 8 X 6 F3/8-M3/8 Steam Pipe Left-Boiler Tall	
3	23000368	Cap 3/8 For Heater Exchanger	
4	10701803	Kit Level Probe with nut	
5	10043219	Pipe 8 X 6 Pressure Sensor	
6	34200288	Pressure Sensor	
7	38123946	Security Valve Top	
8	38123947	Drain Tank Security Valve	
9	10060533	Safety Valve 1,9 Bar 3/8" 2019	
10	27120130	Hot Water Suction Pipe	
11	38228005	Silicon Tube D.6X4	
12	10043119	Pipe 8X6 F3/8-M3/8 Steam Tap Right Tall	
13	10044098	Pipe Circulation Mm275 F1/2-M1/2 Mc/15	
14	10044097	Pipe Circulation Mm225 F1/2-M1/2 Mc/15	
15	27350001	Gasket 3/8 X 1 Copper	
16	10042032	Injector Pipe 127	
17	10042156	Pipe 6 X 4 Central Flowmeter-Heat. Exch. F1/4-M1/4	
18	10042157	Pipe 6 X 4 Central Flowmeter-Heat. Exch. F1/4-M1/4	
	10042158	Pipe 6 X 4 right Flowmeter-Heat. Exch. F1/4-M1/4	
19	34070060	Flowmeter Horiz. Connection	
20	10046079	Pipe Flowmeter 2Gr/15	
	10046080	Pipe Flowmeter 3Gr/15	
	36404052	O-Ring 9,16 X 2,62 F 3037	
21	38228002	Silicone Hose D. 9X6X560	
22	10042226	Pipe 6 X 4 Sn-M3/8 Boiler Inlet	
	36404052	O-Ring 9,16 X 2,62 F 3037	
23	10701245	Hydro Hub 120V 60Hz	
	10701246	Hydro Hub 230V	
24	69140014	Operator Kit 220-240V Hydraulic Module	
	69140015	Operator Kit 110-120V Hydraulic Module	
25	69140009	Pressure Relief Valve Hydraulic Module	
26	69140019	Pressure Relief Valve Cap	
27	69140010	Spring Pressure Relief Valve Hydraulic Module	
28	69140011	Plunger Pressure Relief Valve Hydraulic Module	
29	69140047	Kit Check Valve Complete	
30	69140016	Check Valve Cap	
31	69140018	Spring Check Valve	
32	69140048	Gummy+Bush	
33	69140006	Filter Hydraulic Module	
34	34040192	Valve 230V Water (Sirai) With Elbow	
35	23125028	reducer 2 mm	strozzatura tubo trifonica
	23125029	STROZZATURA CIECA D.14,5 GRUPPI SB	
36	10043245	Pipe 8x6 Grouphead	
38	23125021	Group Restriction 2 Mm	strozzatura ingresso gruppo

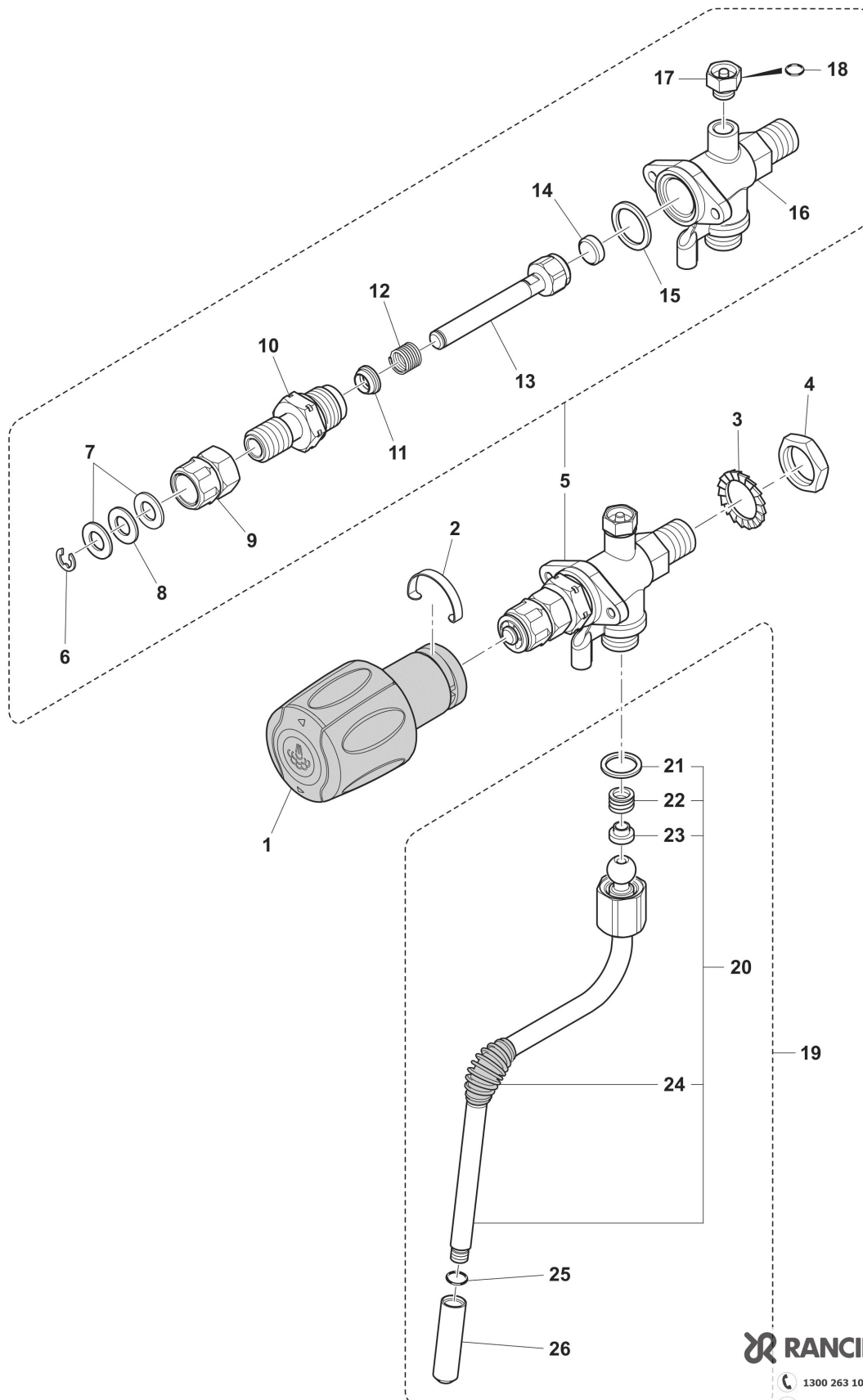




POS.	CODE	DESCRIPTION	NOTES
1	10051191	Brewing Group Vert. Jet 230V	
	10051192	Brewing Group Vert. Jet 110V	
2	10071137R	Porta-Filter Rr/09 2Doses	
3	10071118R	Porta-Filter Rr/09 1Dose	
4	10705535	Filterholder Cap With Ring	
5	10705091	Kit Filter Holder Tap 07	
6	20112211	Filter Holder Body Mc/09	
7	21102601	1 Cup Beak Mc/09	
8	21100801	2 Cup Beak Mc/09	
9	40100005	1 Dose Deeper Filter	
	40100106	8Gr Filter Inox	
10	40100090	Deeper 2 Cup Filter	
	40100102	2 Cup Calibrated Filter	
	40100107	16Gr Filter Inox	
	40100108	18Gr Filter Inox	
11	25105007	Filter Spring	
12	37030518	Shower Screw	
13	40200005	Shower Net	
14	25139001	Group Jetbreaker	
15	36301046	Group Gasket Perossidica Hp	
16	20200182	Shower Holder Brass	
	20200183	Shower Screen Holder Low Profile	
17	20200053P	Brewing Group Body Vert. Jet	
18	23000311	Spacer M6 X 30	
	37040611	Inox Screw M 6 X 10	
19	23000227	Group Jet Cap	
20	27400002	Gasket For Brewing Group Cap	
21	10060612	Brewing Group Flow Limiter Assy.	
	10060618	Group Jet 0.6	
	10701616	Teflon Restrictor Assy.	
22	21300710	Group Space Sleeve	
23	37040830	Screw M 8X30	
24	36402005	O-Ring Electrovalve	
25	37060413	Screw M 4 X 12	
26	34040149	Valve 3/2 220-240V UI (Sirai)	
	34040150	Valve 3/2 110-120V 60Hz UI (Sirai)	
27	10042014	Pipe Jet Breaker Copper	tall version 1x 2gr 1x 3gr
	10042016	Pipe Jet Breaker Copper Right	tall version 1x 2gr 2x 3gr
	10090002	Therm.Group Jetbreaker	version standard
	38120327	Jet Breaker Group Drain Pipe	version tall

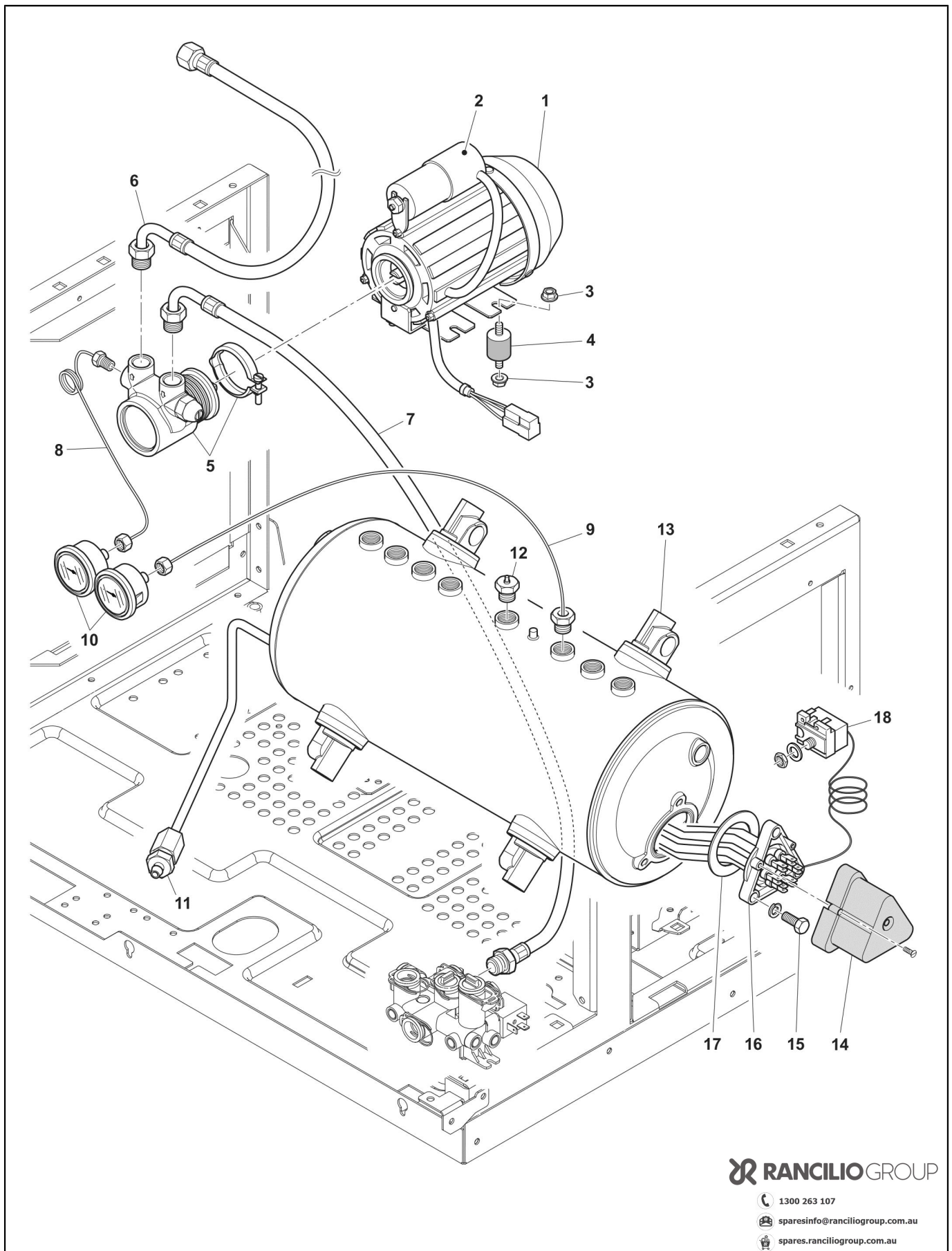


POS.	CODE	DESCRIPTION	NOTES
1	20200113	Hot Water Connection Brass	
2	37431600	Outer Toothed Washer D16	
3	26220005	Flat Nut 3/8	
4	36220009	Gasket Nut Note Teflon	
5	23000413	Steam/Water Tap Extension	
6	10702033	Valve 230V Water	
7	36220009	Gasket Nut Note Teflon	
8	39110038	Spring Connection Steam Tap	
9	36930016	Gasket Teflon Connection Steam Wand	
10	36930017	Teflon Gasket For Steam Wand Nut	
11	10705079	Jetbreaker+Sprayer	
12	25135020	Water Sprayer Filter C7	

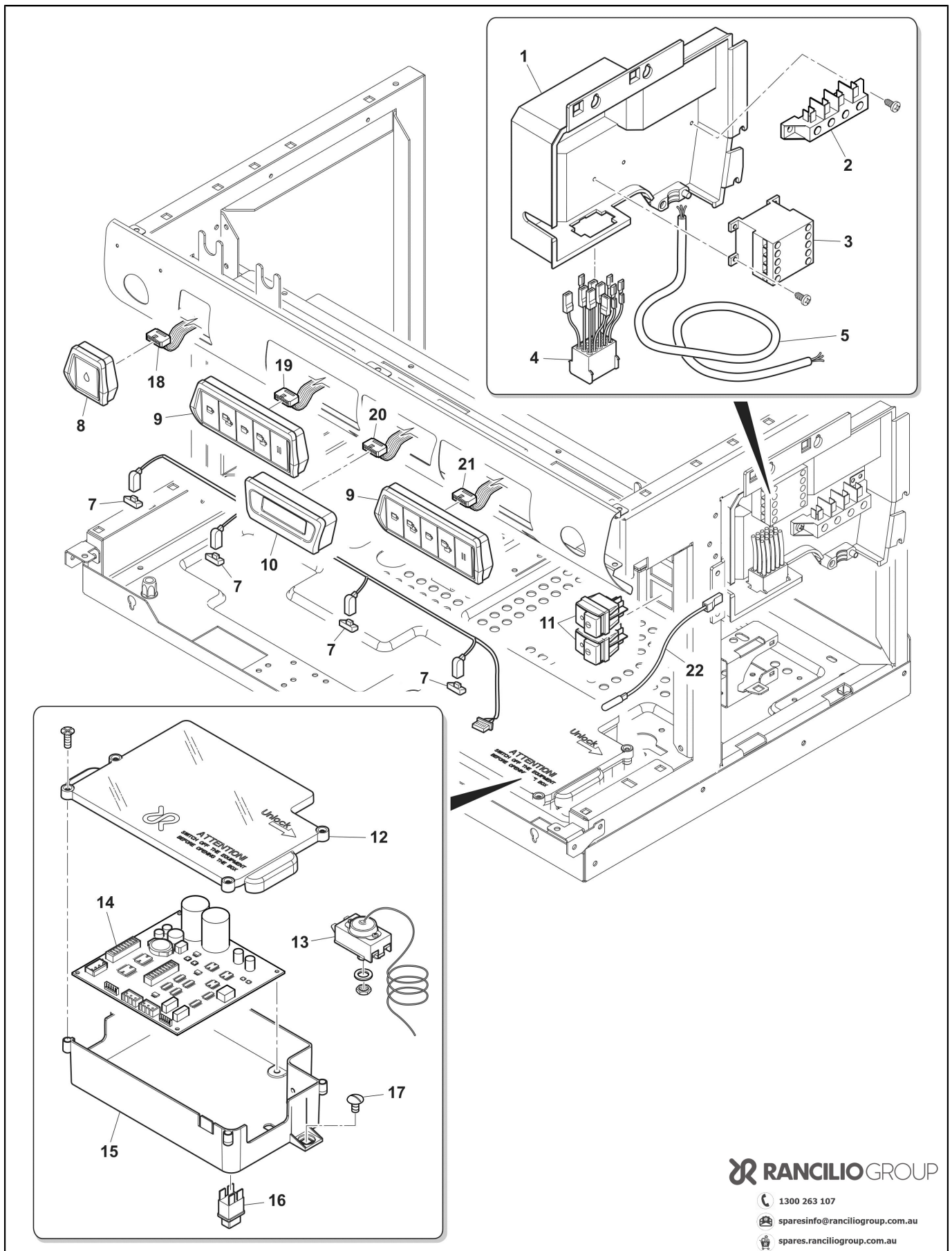


POS.	CODE	DESCRIPTION	NOTES
1	10060189	Steam Tap/16	
2	32210001	Steam Handle Spring	
3	37431600	Outer Toothed Washer D16	
4	26220005	Flat Nut 3/8	
5	10060149	Steam Tap+Av Valve	
6	37510700	Snap Ring D. 7	
7	32239044	New Steam Cock Washer	
8	36230001	Teflon Washer	
9	23220029	Reg Bush For New Cock	
10	23000302	Stem Guide Ptfе	
11	36990078	Shaft Gasket Fast Tap	
12	39110035	Water-Steam Cock Spring	
13	10060002	Rod+Nut And Steam Cock Gasket	
14	36301105	Gasket For Nut Steam Tap Epdm	
15	27400001	Gasket Copper Compass Re Group	
16	10701621	Steam Tap Body With Av. Valve/19	
17	10705180	Kit Av Valve Steam Tap	
18	36404058	O-Ring 3.68 X 1.78 Epdm 70Sh Teflon	
19	10706034	Steam Pipe+Joint Lg.25 Inox	
20	10049112	Steam Pipe Inox Lg 25	
21	36220009	Gasket Nut Note Teflon	
22	39110038	Spring Connection Steam Tap	
23	36930016	Gasket Teflon Connection Steam Wand	
24	36990004	Rubber For Steam Pipes	
25	36301050	O-Ring 6.4X1.9	
26	23000120	Steam Sprayer Lg.25 Diam. 1,1	
	23000121	Sprayer Lg25 D1.1 4holes	
27	36930017	Teflon Gasket For Steam Wand Nut	

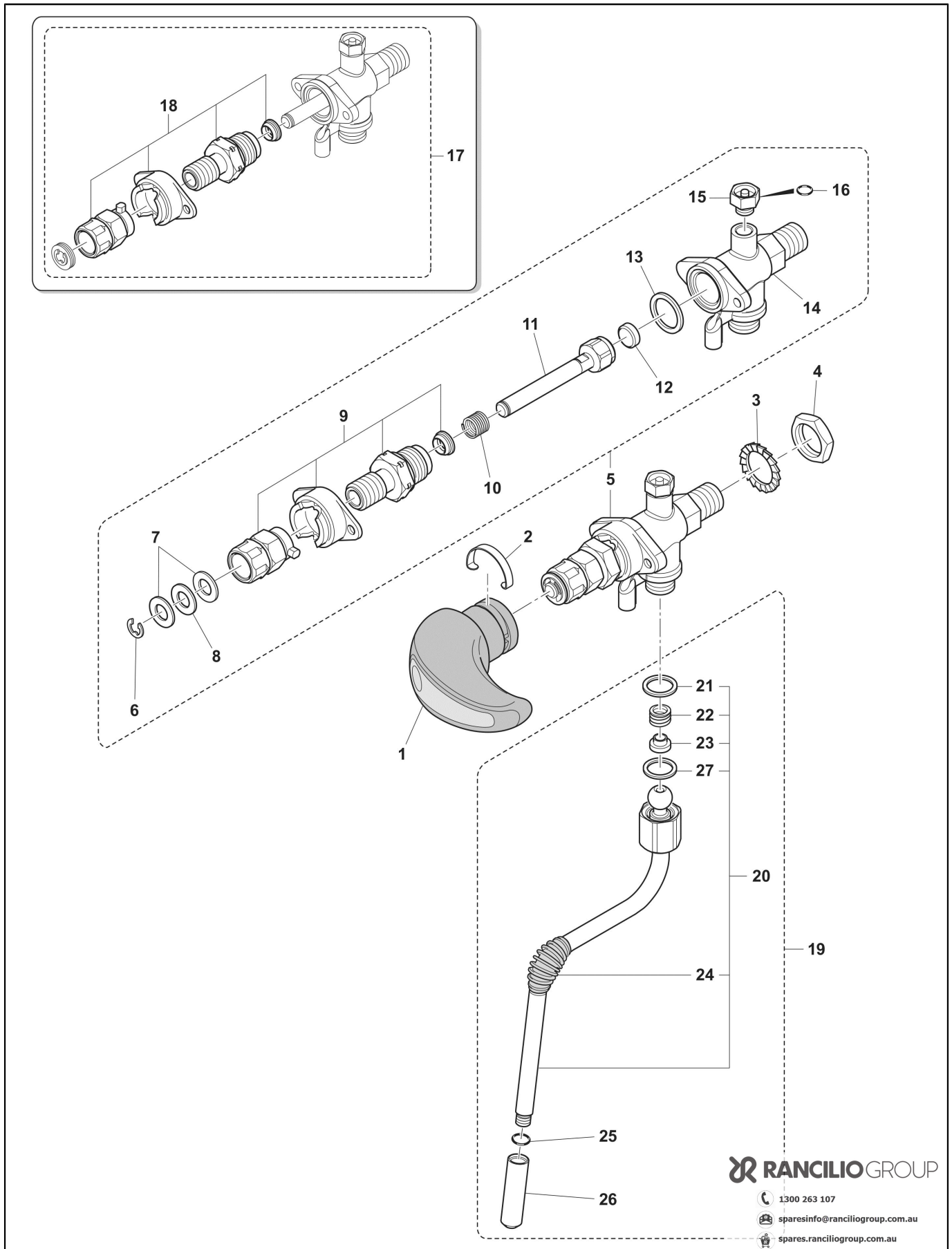




POS.	CODE	DESCRIPTION	NOTES
1	34011102	Vm Motor 230V	
2	34020014	Capacitor 10Mf 220V UI Vm	
3	80134961	Nut M6	
4	36322003	Anti-Vibrating Device 20 X 20 - M6 X 10 Sh45	
5	69000993	Volumetric Pump Vm 200L/H &quot;Rancilio&quot;	
6	69000734	Flex Pipe Mm1800 With Elbow+Check Valve	
	69000735	Flex Pipe Mm2300 With Elbow+Check Valve	
7	69000826	Flex Pipe 3/8M-Hydro Hub 960Mm Bend	
	69000827	Flex Pipe 3/8M-Hydro Hub 1190Mm Bend	
8	69000243	Pipe Capillary Manometer F1/8-M1/8	
9	10041053	Pipe 4X3X600 F1/8 M3/8	
10	35002512	Manometer Boiler Mc/15	
	35002513	Manometer Pumpe 0-16	
11	10043017	TUBO 8X6X251 F1/4-F3/8 -CU-	VERSIONE CON SCARICO LATERALE VERSION WITH SIDE DRAIN
	10043020	Pipe 8X6 Drain Boiler Assy.	VERSIONE PER SCARICO CENTRALE VERSION WITH CENTRAL DRAIN CONNECTION
12	10060051	Antivacuum Valve With Weight	
13	10022520T	Boiler 2Gr	
	10022530T	Boiler 3Gr	
	10701376	Boiler Retrofit Kit 2Gr	
	10701377	Boiler Retrofit Kit 3Gr	
14	38123665	Cover Heating Element	
15	37040821	Screw M 8X22	
16	33323004	Heating Element Capill. 230V/4300W	
	33323006	Heating Element+Capillar 230V 6000W	
17	36930012	Gasket Resistance Teflon	
18	34200329	Tecasa Save-Heating Element With Cap	



POS.	CODE	DESCRIPTION	NOTES
1	10701615	Kit Electric Box Classe 7 Usb Ssr With Cable 230V	macchine da dicembre 2018 machine from december 2018
2	34150026	Clamp 4 Position	
3	34200331	Mini-Contactor 110V	
	34200333	Mini-Contactor Abb 220/240V	
4	10110655	Wiring Power	
	10120055	Cable Harness 2Gr Classe 7 Usb Ssr	
5	34300073	Cavo H07Rn-F 5C.Sez.2,5 L=2000	
7	10110934	Wiring Illumination C7/16 2 Gr	
	10110935	Wiring Illumination C7/16 3 Gr	
	10701420	Led Light Classe 7	
8	10701191	Water Button Classe 7/16	
9	10701190	Coffee Keyboard Classe 7 Usb	
10	10701193	Display C7 Usb	
11	34030971	Switch Green Light	
12	38120582	Main Board Lid Mc/15	
13	34200329	Tecasa Save-Heating Element With Cap	
14	10701309	Kit Main Board C7 Usb	
	10701338	Kit Main Board C7 Usb 110V	
15	10110909	Electronic Box 230V Classe 7 Usb/16	
	38120519	Usb Drive Cap	
16	34030145	Main Switch	
17	34200103	Plastic Closing Screw	
19	10110923	Keyboard Wiring 2Gr Classe 5-7 Usb 1Pos.	2gr: 1st group
	10110924	Keyboard Wiring 2-3Gr Classe 5-7	3gr: 1st group
20	10110926	Wiring Display Classe 7 Mc15	
21	10110924	Keyboard Wiring 2-3Gr Classe 5-7	3gr: 1st group
	10110925	Keyboard Wiring 3Gr Classe 5-7 Usb 3Pos.	3gr: 3rd group
	10110927	Keyboard Wiring Classe 5-7 Usb 2Pos.	3gr: 2nd group
22	34030116	Neon Lamp	





POS.	CODE	DESCRIPTION	NOTES
1	10060181	Handle Clever	
2	32210001	Steam Handle Spring	
3	37431600	Outer Toothed Washer D16	
4	26220005	Flat Nut 3/8	
5	10060148	Fast Steam Tap Right	
6	37510700	Snap Ring D. 7	
7	32239044	New Steam Cock Washer	
8	36230001	Teflon Washer	
9	10701239	Kit Clever/15 Cams Peek Right	
10	39110035	Water-Steam Cock Spring	
11	10060002	Rod+Nut And Steam Cock Gasket	
12	36301105	Gasket For Nut Steam Tap Epdm	
13	27400001	Gasket Copper Compass Re Group	
14	10701621	Steam Tap Body With Av. Valve/19	
15	10705180	Kit Av Valve Steam Tap	
16	36404058	O-Ring 3.68 X 1.78 Epdm 70Sh Teflon	
17	10060147	Fast Steam Tap Left	
18	10701240	Kit Clever/15 Cams Peek Left	
20	10049112	Steam Pipe Inox Lg 25	
21	36220009	Gasket Nut Note Teflon	
22	39110038	Spring Connection Steam Tap	
23	36930016	Gasket Teflon Connection Steam Wand	
24	36990004	Rubber For Steam Pipes	
25	36301050	O-Ring 6.4X1.9	
26	23212035	Steam Sprayer Lg44 D1.5	
27	36930017	Teflon Gasket For Steam Wand Nut	

Code	No. table	Pos.
10022520T	2003	13
10022530T	2003	13
10041053	2003	9
10042014	2004	27
10042016	2004	27
10042032	2016	16
10042032	2017	16
10042153	2016	17
10042154	2016	17
10042155	2016	18
10042156	2017	17
10042157	2017	18
10042158	2017	18
10042226	2016	22
10042226	2017	22
10043017	2003	11
10043020	2003	11
10043119	2016	12
10043119	2017	12
10043120	2016	1
10043120	2016	2
10043120	2017	1
10043120	2017	2
10043219	2016	5
10043219	2017	5
10043245	2017	36
10044097	2016	14
10044097	2017	14
10044098	2016	13
10044098	2017	13
10046079	2016	20
10046079	2017	20
10046080	2016	20
10046080	2017	20
10049112	2007	20
10049112	4000	20
10051191	2004	1
10051192	2004	1
10051227	2019	1
10051229	2019	1
10060002	2007	13
10060002	4000	11
10060051	2003	12
10060147	4000	17
10060148	4000	5
10060149	2007	5
10060181	4000	1
10060189	2007	1
10060525	2016	9
10060533	2016	9
10060533	2017	9
10060612	2004	21
10060618	2004	21
10060622	2019	14
10060623	2019	14
10071118R	2004	3
10071118R	2019	3
10071137R	2004	2
10071137R	2019	2
10090002	2004	27
10090002	2019	22
10110427	1003_1	3
10110655	3006	4
10110909	3006	15
10110923	3006	19
10110924	3006	19
10110924	3006	21

Code	No. table	Pos.
10110925	3006	21
10110926	3006	20
10110927	3006	21
10110934	3006	7
10110935	3006	7
10120055	3006	4
10701187	1003	2
10701187	1003_1	2
10701188	1003	1
10701188	1003_1	1
10701190	3006	9
10701191	3006	8
10701193	3006	10
10701239	4000	9
10701240	4000	18
10701245	2016	23
10701245	2017	23
10701246	2016	23
10701246	2017	23
10701259	1003	2
10701259	1003_1	2
10701260	1003	1
10701260	1003_1	1
10701309	3006	14
10701319	1003	5
10701320	1003	5
10701331	1003	11
10701331	1003_1	11
10701338	3006	14
10701376	2003	13
10701377	2003	13
10701420	1003	15
10701420	3006	7
10701492	1003_1	3
10701493	1003_1	3
10701615	3006	1
10701616	2004	21
10701621	2007	16
10701621	4000	14
10701784	2019	12
10701803	2016	4
10701803	2017	4
10702027	2016	34
10702033	2006	6
10705079	2006	11
10705091	2004	5
10705091	2019	5
10705180	2007	17
10705180	4000	15
10705535	2004	4
10706034	2007	19
10781366	1003	21
10781366	1003_1	21
10781367	1003	21
10781367	1003_1	21
20112211	2004	6
20112211	2019	6
20200053P	2004	17
20200113	2006	1
20200182	2004	16
20200182	2019	16
20200183	2004	16
20200301	2019	17
21100801	2004	8
21100801	2019	8
21102601	2004	7
21102601	2019	7

Code	No. table	Pos.
21300710	2004	22
21300710	2019	4
23000120	2007	26
23000121	2007	26
23000227	2004	19
23000302	2007	10
23000311	2004	18
23000311	2019	18
23000359	2016	10
23000368	2016	3
23000368	2017	3
23000413	2006	5
23125009	2016	35
23125021	2017	38
23125028	2017	35
23125029	2017	35
23212035	4000	26
23220029	2007	9
25105007	2004	11
25105007	2019	11
25135020	2006	12
25139001	2004	14
26220005	2006	3
26220005	2007	4
26220005	4000	4
27120130	2016	36
27120130	2017	10
27350001	2016	15
27350001	2016	3
27350001	2017	15
27400001	2007	15
27400001	4000	13
27400002	2004	20
32210001	2007	2
32210001	4000	2
32239044	2007	7
32239044	4000	7
32331931	1003	7
32331931	1003_1	7
32331932	1003	7
32331932	1003_1	7
32331938	1003	20
32331938	1003_1	20
32331939	1003	20
32331939	1003_1	20
32331957	1003	3
32331958	1003	3
32331990	1003	18
32331991	1003	18
32331991	1003_1	18
32331992	1003	4
32331992	1003_1	4
32331993	1003	4
32331993	1003_1	4
32332084	1003	14
32332084	1003_1	14
32332085	1003	14
32332085	1003_1	14
32332086	1003	12
32332086	1003	12
32332086	1003_1	12
32332087	1003_1	12
32332282	1003_1	3
32910008	2019	27
33122002	1003	6
33122003	1003	6

Code	No. table	Pos.
33323004	2003	16
33323006	2003	16
34011102	2003	1
34020014	2003	2
34030110	1003	16
34030110	1003_1	16
34030116	3006	22
34030145	3006	16
34030971	3006	11
34040149	2004	26
34040149	2019	26
34040150	2004	26
34040150	2019	26
34040192	2017	34
34070060	2016	19
34070060	2017	19
34150026	3006	2
34200103	3006	17
34200288	2016	6
34200288	2017	6
34200329	2003	18
34200329	3006	13
34200331	3006	3
34200333	3006	3
34300073	3006	5
35002512	2003	10
35002513	2003	10
36220009	2006	4
36220009	2006	7
36220009	2007	21
36220009	4000	21
36230001	2007	8
36230001	4000	8
36301046	2004	15
36301046	2019	15
36301050	2007	25
36301050	4000	25
36301105	2007	14
36301105	4000	12
36322003	2003	4
36402005	2004	24
36402005	2019	24
36404052	2016	20
36404052	2016	22
36404052	2017	20
36404052	2017	22
36404058	2007	18
36404058	4000	16
36930012	2003	17
36930016	2006	9
36930016	2007	23
36930016	4000	23
36930017	2006	10
36930017	2007	27
36930017	4000	27
36990004	2007	24
36990004	4000	24
36990078	2007	11
37030408	1003	24
37030408	1003_1	24
37030518	2004	12
37030521	1003	22
37030521	1003_1	24
37040611	2004	18
37040821	2003	15
37040830	2004	23
37040830	2019	23

Code	No. table	Pos.
37060413	2004	25
37060413	2019	25
37154212	1003	23
37154212	1003	25
37154212	1003_1	23
37154212	1003_1	25
37154212	1003_1	5
37431600	2006	2
37431600	2007	3
37431600	4000	3
37510700	2007	6
37510700	4000	6
38120285	1003	15
38120285	1003_1	15
38120286	1003	19
38120286	1003_1	19
38120327	2004	27
38120519	3006	15
38120578	1003	9
38120578	1003_1	9
38120582	3006	12
38120591	1003	17
38120591	1003_1	17
38123568	1003	10
38123568	1003_1	10
38123665	2003	14
38123852	1003	10
38123852	1003_1	10
38123921	1003_1	25
38123946	2016	7
38123946	2017	7
38123947	2016	8
38123947	2017	8
38221007	1003	26
38221007	1003_1	6
38228002	2016	11
38228002	2016	21
38228002	2017	21
38228005	2017	11
39110035	2007	12
39110035	4000	10
39110038	2006	8
39110038	2007	22
39110038	4000	22
40100005	2004	9
40100090	2004	10
40100102	2004	10
40100106	2004	9
40100106	2019	9
40100107	2004	10
40100107	2019	10
40100108	2004	10
40200005	2004	13
40200005	2019	13
42200121	1003	8
42200121	1003_1	8
42200131	1003	13
42200131	1003_1	13
69000243	2003	8
69000734	2003	6
69000735	2003	6
69000826	2003	7
69000827	2003	7
69000993	2003	5
69140006	2016	33
69140006	2017	33
69140009	2016	25

Code	No. table	Pos.
69140009	2017	25
69140010	2016	27
69140010	2017	27
69140011	2016	28
69140011	2017	28
69140014	2016	24
69140014	2017	24
69140015	2016	24
69140015	2017	24
69140016	2016	30
69140016	2017	30
69140018	2016	31
69140018	2017	31
69140019	2016	26
69140019	2017	26
69140047	2016	29
69140047	2017	29
69140048	2016	32
69140048	2017	32
80134961	2003	3



## Headquarters, Production Plant and R&D Centers

### Rancilio Group s.p.a.

Viale della Repubblica 40  
20010 Villastanza di Parabiago  
Milano - Italy  
Tel +39 0331 408200  
Fax +39 0331 551437  
[www.ranciliogroup.com](http://www.ranciliogroup.com)  
[info@ranciliogroup.com](mailto:info@ranciliogroup.com)

### Egro Suisse AG

Bahnhofstrasse 66  
5605 Dottikon, Switzerland  
Tel. +41 (0)56 616 95 95  
Fax +41 (0)56 616 95 97  
[www.egrocoffee.com](http://www.egrocoffee.com)  
[info@egrocoffee.com](mailto:info@egrocoffee.com)

## Worldwide Branch Locations

### SPAIN

RancilioGroup Espana, s.a.  
Gran Via de Carlos III, 84 3ª  
Edificio Trade  
08028 Barcelona - Spain  
Tel. +34 902 884 275  
Tel. +34 934 923 414  
Fax +34 934 965 701  
[www.ranciliogroup.com](http://www.ranciliogroup.com)  
[info-es@ranciliogroup.com](mailto:info-es@ranciliogroup.com)

### PORTUGAL

Rancilio Group Portugal Lda  
Estrada da Falagueira nº 68 E  
2700-365 Amadora-Lisboa - Portugal  
Tel. +351 21 019 10 91  
Fax +351 21 019 10 91

Rua Nova do Seixo 1282  
4465-706 Leça do Balio-Porto - Portugal  
Tel. +351 22 010 14 19  
Fax +351 22 010 14 19  
[www.ranciliogroup.com](http://www.ranciliogroup.com)  
[info-pt@ranciliogroup.com](mailto:info-pt@ranciliogroup.com)

### GERMANY

Rancilio Group Deutschland GmbH  
Talstrasse 27  
97990 Weikersheim - Germany  
Ph. +49 7934 99 29 30  
Fax +49 7934 99 29 330  
[www.ranciliogroup.de](http://www.ranciliogroup.de)  
[info-de@ranciliogroup.com](mailto:info-de@ranciliogroup.com)

### SWITZERLAND

Egro Suisse AG  
Bahnhofstrasse 66  
5605 Dottikon - Switzerland  
Tel. +41 (0)56 616 95 95  
Fax +41 (0)56 616 95 97  
[www.egrosuisse.ch](http://www.egrosuisse.ch)  
[info@egrosuisse.ch](mailto:info@egrosuisse.ch)

### USA/CANADA

Rancilio Group North America Inc.  
1340 Internationale Parkway / Suite 200  
Woodridge, IL 60517 - U.S.A.  
Ph: +1 630 914 7900  
Fax: +1 630 914 7901  
Toll Free: +1 877 726 2454  
[www.ranciliogroup.com](http://www.ranciliogroup.com)  
[info@ranciliogroup.com](mailto:info@ranciliogroup.com)



**RANCILIO GROUP**



1300 263 107



[sparesinfo@ranciliogroup.com.au](mailto:sparesinfo@ranciliogroup.com.au)



[spares.ranciliogroup.com.au](http://spares.ranciliogroup.com.au)