

M2C

Parts Manual



WASHTECH[®]
PROFESSIONAL WASH SYSTEMS

MOFFAT[®]
www.moffat.com.au



SPARES
WEBSTORE spares.moffat.com.au

 1300 263 107

 sparesinfo@moffat.com.au

Spare Parts M2-C

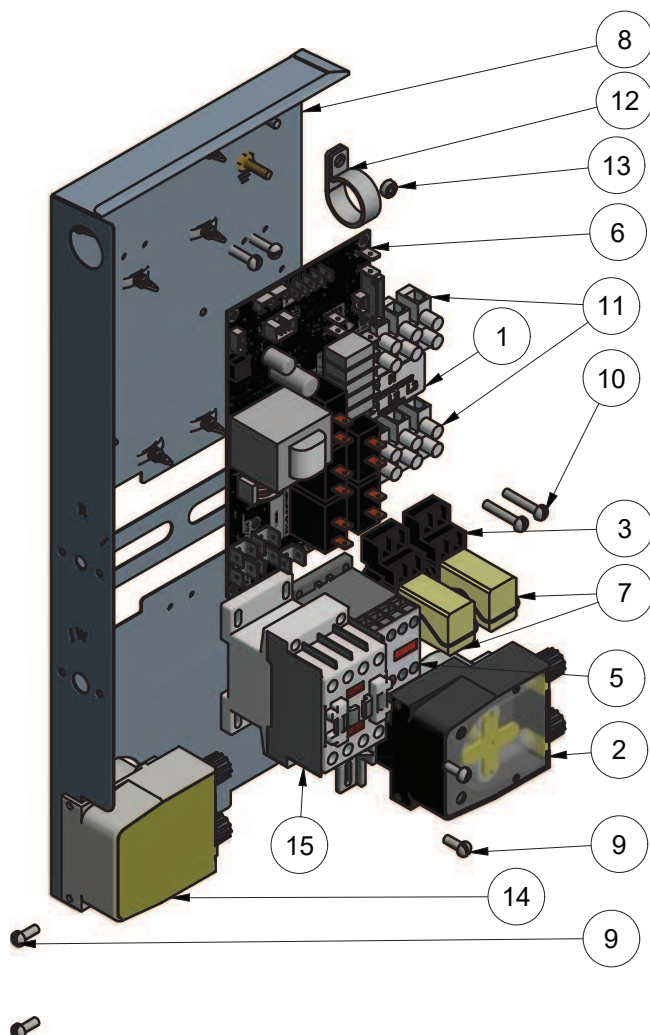
DESCRIPTION	PART NO	REC. STOCK
Controls & Indicators		
Digital Temperature Sensor 500mm	600 30429	1
Digital Temperature Sensor 1000mm	600 30430	1
Door Switch	600 30183	1
Electronic Controller Kit*	Refer to Note 1 in Assembly diagrams	1
LCD Board with Spacers Kit*	Refer to Note 2 in Assembly diagrams	1
Pressure Switch Break Tank	400 10214	1
Pressure Switch Wash Tank	600 30479	1
WI200 Keypad Membrane	400 70160	1
Heating Components		
Over Temperature Thermostat	600 30088	
Rinse Element 2 x 3kW	600 30496	1
Wash Element 2.5kW straight	600 30159	1
Wash Element 2.5kW bent	600 30160	1
Hoses		
Hose Drain Pump 2.5m	600 60105	1
Hose Drain Pump Inlet (Before s/n 156855)	6197	300mm
Hose Drain Pump Inlet (From s/n 156855)	328 10037	
Pressure Switch Hose	3067	400mm
Rinse Hose	600 60073	2000mm
Wash Pump Inlet Hose	1262	1
Wash Pump Outlet Hose	6195	350mm
Pumps & Solenoids		
Condenser Fan	600 30504	1
Detergent Pump	600 30094	1
Detergent Squeeze Tube	600 30134	1
Drain Pump	600 60102	1
Rinse Aid Pump	600 30480	
Rinse Aid Squeeze Tube	600 30119	1
Rinse Pump CRC-R-DX	600 30508	1
Solenoid Valve 1 way	3342	1
Solenoid Valve 2 ways	3341	1
Wash Pump	600 30299	1
Wash Tank Components		
Drain Filter	328 10032	1
Drain Upstand	400 10145	1
Rinse Arm End Plug	400 30200	2
Rinse Jet Machined	400 30087	2
Scrap Tray	328 10003	
Wash Arm End Screw	600 80072	2
Wash Jet Machined	400 30088	
Wash/Rinse Arm Bush	C190624	4
Wash Inlet Filter	328 12018	1
Wash Spindle Nut	400 30397	1
Rinse Spindle	400 30398	1
Note: For more parts look in the section "Assembly Diagrams"		

Assembly Diagrams

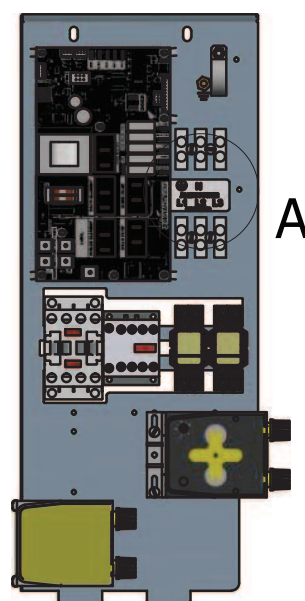
ALC/M2C WIRING TRAY ASSEMBLY

400 10341 29/04/2020 REV 3-B

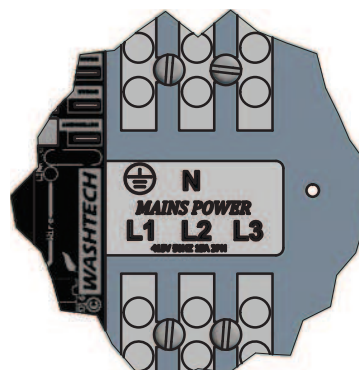
PERSPECTIVE VIEW



FRONT VIEW



DETAIL A



Note 1 - Controller Board Replacement Kits

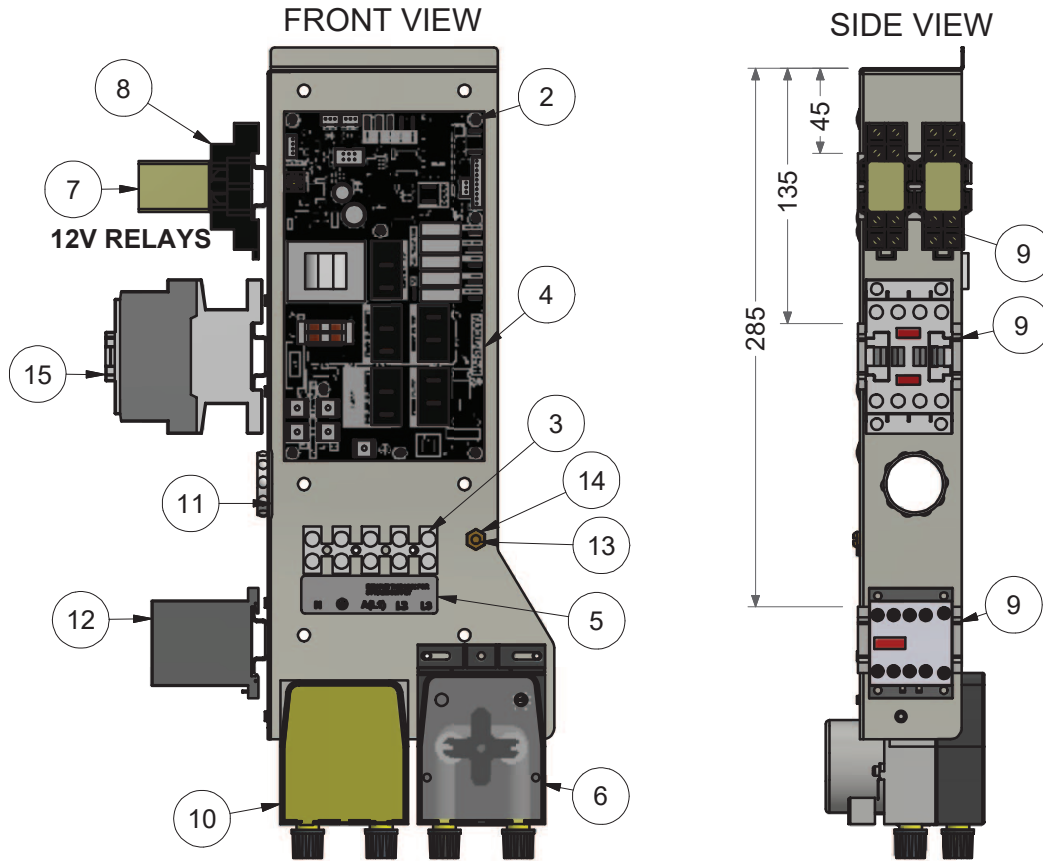
KIT0440067 - For replacement on machines after serial number 133363.

KIT0440068 - Use this kit for machines prior to serial number 133363 to replace both boards. The machine will not function unless both boards are replaced.

Parts List			
ITEM	PART NUMBER	DESCRIPTION	QTY
1	label 3 Phase Power	LABEL M1C POWER CONNECTIONS	1
2	600 30480	RINSE AID PUMP ADJUSTABLE	1
3	600 30081	BASE 2 POLE RELAY	2
4	600 30082	WIRE CLIP RELAY BASE	2
5	600 30337	CONTACTOR 20A 3NO/NC 230-240V	2
6	Refer to Note 1*	WI200 Controller PCBA	
7	600 30444	RELAY 12V 2 POLE	2
8	302 12019	M1-C Wiring Tray Sub-Assembly	1
9	8801	MS PAN POZI ZP M4x12	4
10	8802	MS PAN POZI ZP M4x25	4
11	3227	TERMINAL STRIP 3 WAY	2
12	600 30173	P CLIP	1
13	8110	M5 SS HEX NUT	1
14	600 30094	DETERGENT PUMP KIT	1
15	600 30458	CONTACTOR 32A	1

M2-C/AL4-C WIRING TRAY ASSY

328 14017 30/10/2019 REV 1-F



Parts List			
ITEM	PART NUMBER	DESCRIPTION	QTY
1	352 20008	M2VAL(4) WIRING TRAY	1
2	600 30527	PCB SUPPORT-END DOME HEAD	8
3	600 30554	TERMINAL STRIP/BLOCK 5 WAY	1
4	Refer to Note 1*	WI200 Controller PCBA	
5	LABEL	POWER SUPPLY TERMINAL	1
6	600 30480	PERISTALTIC RINSE AID PUMP ADJUSTABLE	1
7	600 30444	RELAY 12V 2 POLE	2
8	600 30081	BASE 2 POLE RELAY	2
9	328 24096	M2C DIN RAIL S/S	3
10	600 30094	DETERGENT PUMP KIT	1
11	600 30331	GROMMET 31.8 MM	1
12	600 30337	CONTACTOR 20A 3NO/NC 230-240V	1
13	8816	MS RH BRASS 3/16 X 3/4	1
14	8151	NUT HX BRASS 3/16" PRESSED	1
15	600 30458	CONTACTOR 32A	1

Note 1 - Controller Board Replacement Kits

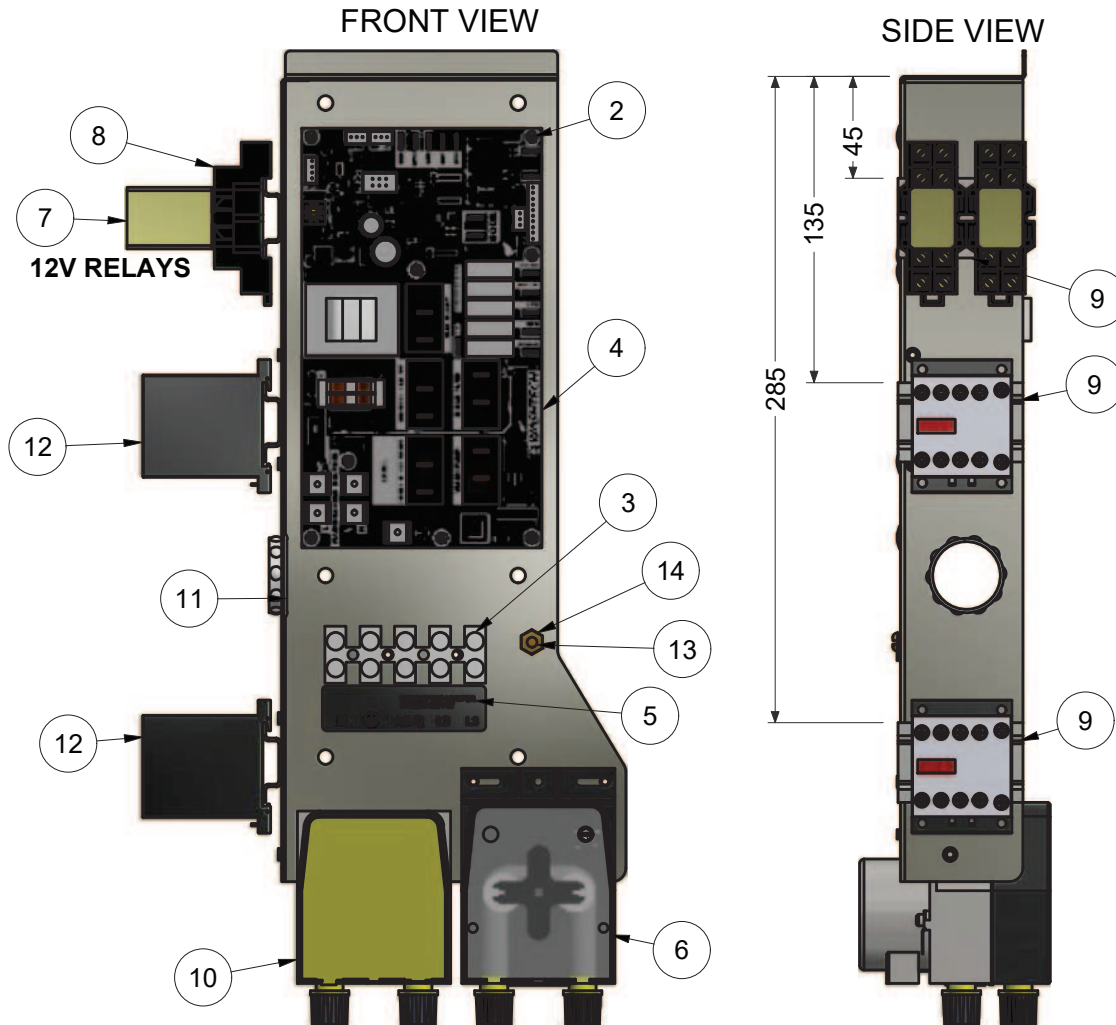
KIT0440067 - For replacement on machines after serial number 133363.

KIT0440068 - Use this kit for machines prior to serial number 133363 to replace both boards. The machine will not function unless both boards are replaced.

DATE	DESCRIPTION	REV
30/10/19	CHANGE CONTACTOR - ITEM 15	1-F

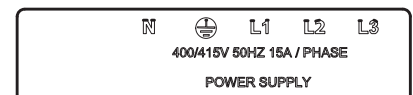
M2-C/AL4-C WIRING TRAY ASSY

328 14017 22/01/2019 REV 1-E



Parts List			
ITEM	PART NUMBER	DESCRIPTION	QTY
1	352 20008	M2\AL(4) WIRING TRAY	1
2	600 30527	PCB SUPPORT-END DOME HEAD	8
3	600 30554	TERMINAL STRIP/BLOCK 5 WAY	1
4	Refer to Note 1*	WI200 Controller PCBA	
5	LABEL	POWER SUPPLY TERMINAL	1
6	600 30480	PERISTALTIC RINSE AID PUMP ADJUSTABLE	1
7	600 30444	RELAY 12V 2 POLE	2
8	600 30081	BASE 2 POLE RELAY	2
9	328 24096	M2C DIN RAIL S/S	3
10	600 30094	DETERGENT PUMP KIT	1
11	600 30331	GROMMET 31.8 MM	1
12	600 30337	CONTACTOR 20A 3NO/NC 230-240V	2
13	8816	MS RH BRASS 3/16 X 3/4	1
14	8151	NUT HX BRASS 3/16" PRESSED	1

TERMINAL LABEL



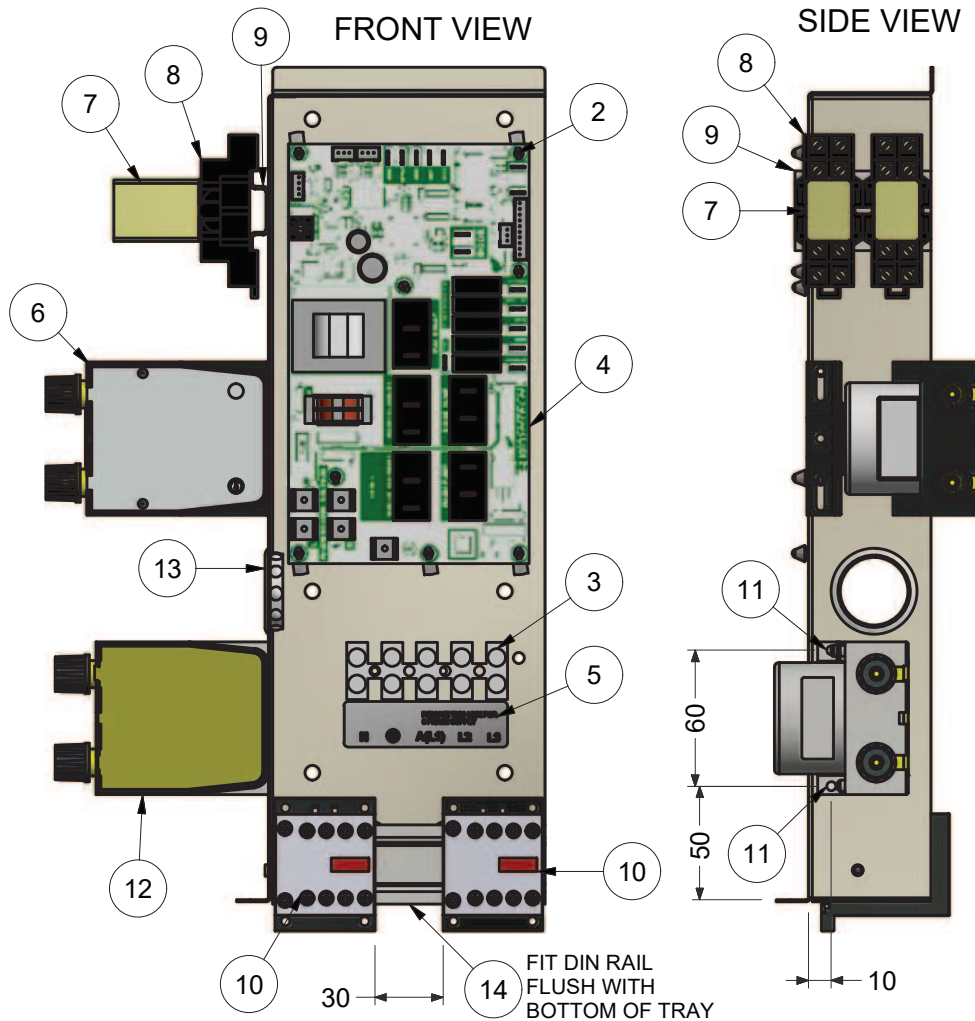
Note 1 - Controller Board Replacement Kits

KIT0440067 - For replacement on machines after serial number 133363.

KIT0440068 - Use this kit for machines prior to serial number 133363 to replace both boards. The machine will not function unless both boards are replaced.

M2-C/AL4-C WIRING TRAY ASSY

328 14017 28/11/2017 REV 1-D



Note 1 - Controller Board Replacement Kits

KIT0440067 - For replacement on machines after serial number 133363.

KIT0440068 - Use this kit for machines prior to serial number 133363 to replace both boards. The machine will not function unless both boards are replaced.

Parts List			
ITEM	PART NUMBER	DESCRIPTION	QTY
1	352 20008	M2\AL(4) WIRING TRAY	1
2	600 30449	PCB SUPPORT NYLON 6.3MM	8
3	600 30554	TERMINAL STRIP/BLOCK 5 WAY	1
4	Refer to Note 1*	WI200 Controller PCBA	
5	LABEL	POWER SUPPLY TERMINAL	1
6	600 30480	RINSE AID PUMP ADJUSTABLE	1
7	600 30444	RELAY 12V 2 POLE	2
8	600 30081	BASE 2 POLE RELAY	2
9	328 24096	M2C DIN RAIL S/S	55mm
10	600 30337	CONTACTOR 20A 3NO/NC 230-240V	2
11	600 80088	M4 X 10 S/S WELD STUD	2
12	600 30094	DETERGENT PUMP KIT	1
13	600 30331	GROMMET 31.8 MM	1
14	328 24096	M2C DIN RAIL S/S	120mm

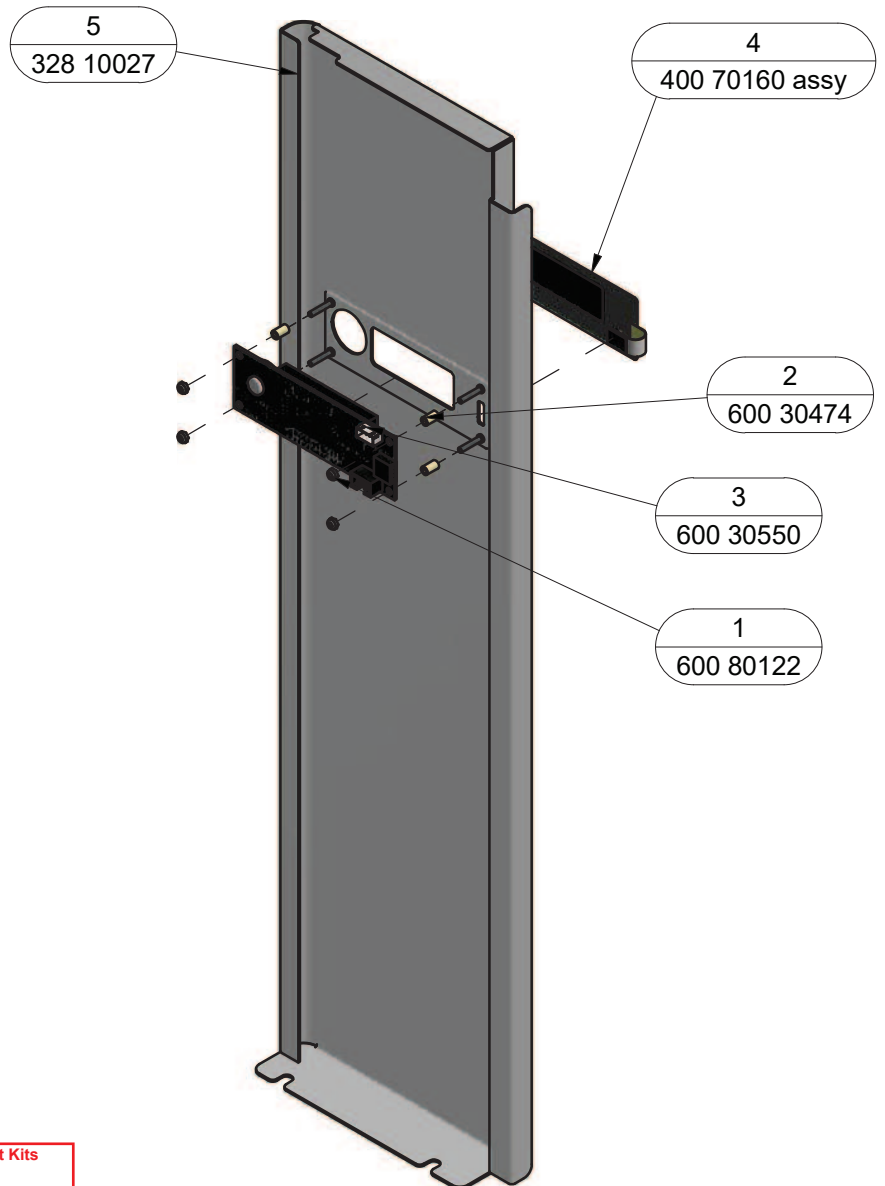
AL\M2 CONTROL PANEL ASSY

328 10020 29/06/2017 REV 3-F

EXPLODED VIEW



FRONT VIEW



Note 2 - LCD Display Board Replacement Kits

KIT0440069 - For replacement on machines after serial number 133363

KIT0440068 - Use this kit for machines prior to serial number 133363 to replace both boards. The machine will not function unless both boards are replaced.

Parts List			
ITEM	PART NUMBER	DESCRIPTION	QTY
1	600 80122	M3 SS HEX NYLON NUT T304	4
2	600 30474	SPACER RETAINING M3 x 8.5 MM	4
3	Refer to Note 2	LCD Board c/w item 2	
4	KIT0440047	KEY PAD MEMBRANE KIT	
5	328 10027	AL\M2 CONTROL PANEL SHEET METAL ASSY	1

Universal Electronic Controller WI200

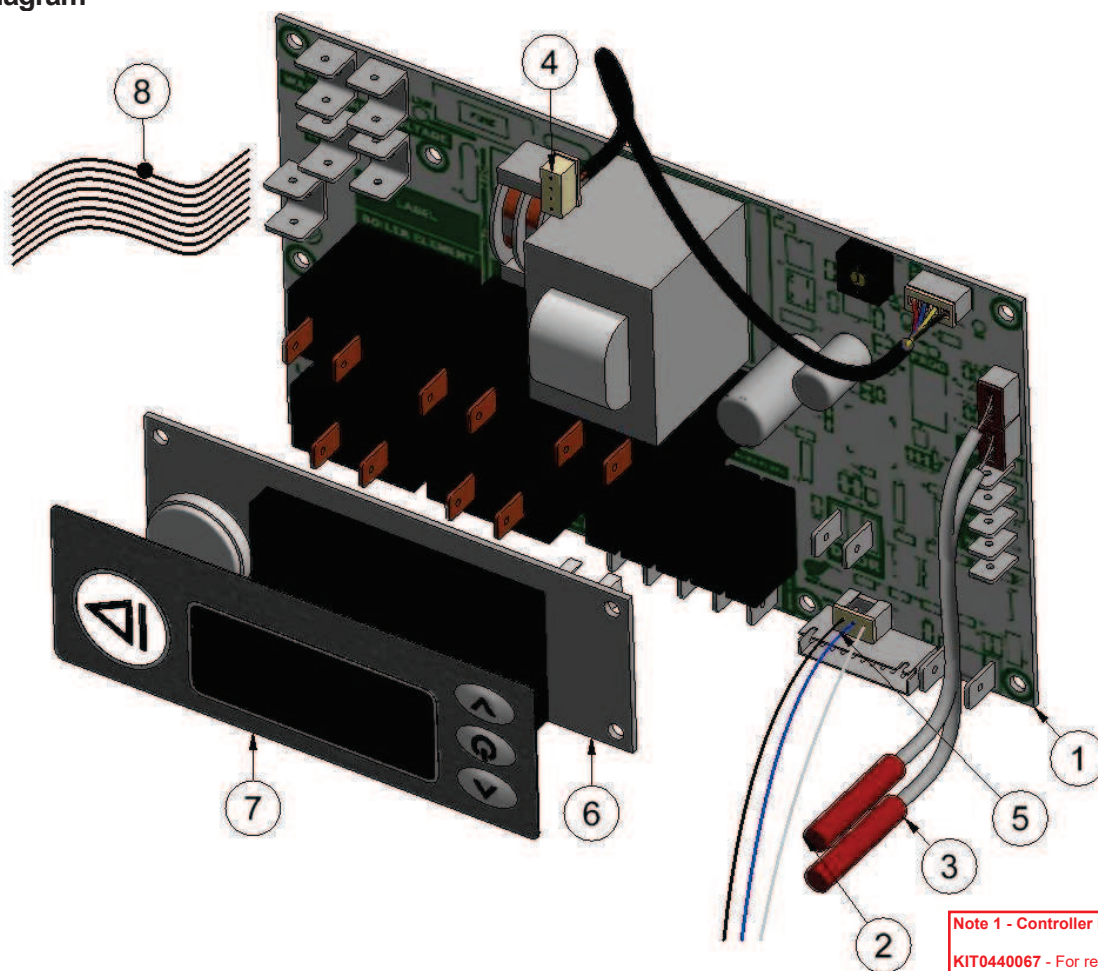
Function

The WI-200 controller is designed to monitor and manage multiple processes in the dishwasher such as cycle timing, temperature control, motor control, cleaning cycle, chemical dispensing and many more.

Description

The controller board is equipped with quick connector terminals for 230/240V power supply, connector strip for 12V inputs, quick connectors for 230-240V outputs, door switch quick connectors, 2 connectors for digital temperature sensors, rotary switch for selection of 10 preset dishwashing modes, connector for touch pad controller and a communication/programming connector.

Diagram



Parts

Item	Part Number	Description
1	Refer to Note 1	Electronic Controller Kit
2	600 30429	Digital Temperature Sensor 0.5 m
3	600 30430	Digital Temperature Sensor 1 m
4	600 30425	Loom LCD Interface 0.7 m
5	600 30486	Loom Low Voltage Interface 3-way 0.7m R
6	Refer to Note 2	Kit LCD Board with spacers
7	KIT0440047	Keypad Membrane Kit
8	600 30422	Loom Kit AC High Voltage

Note 1 - Controller Board Replacement Kits

KIT0440067 - For replacement on machines after serial number 133363.

KIT0440068 - Use this kit for machines prior to serial number 133363 to replace both boards. The machine will not function unless both boards are replaced.

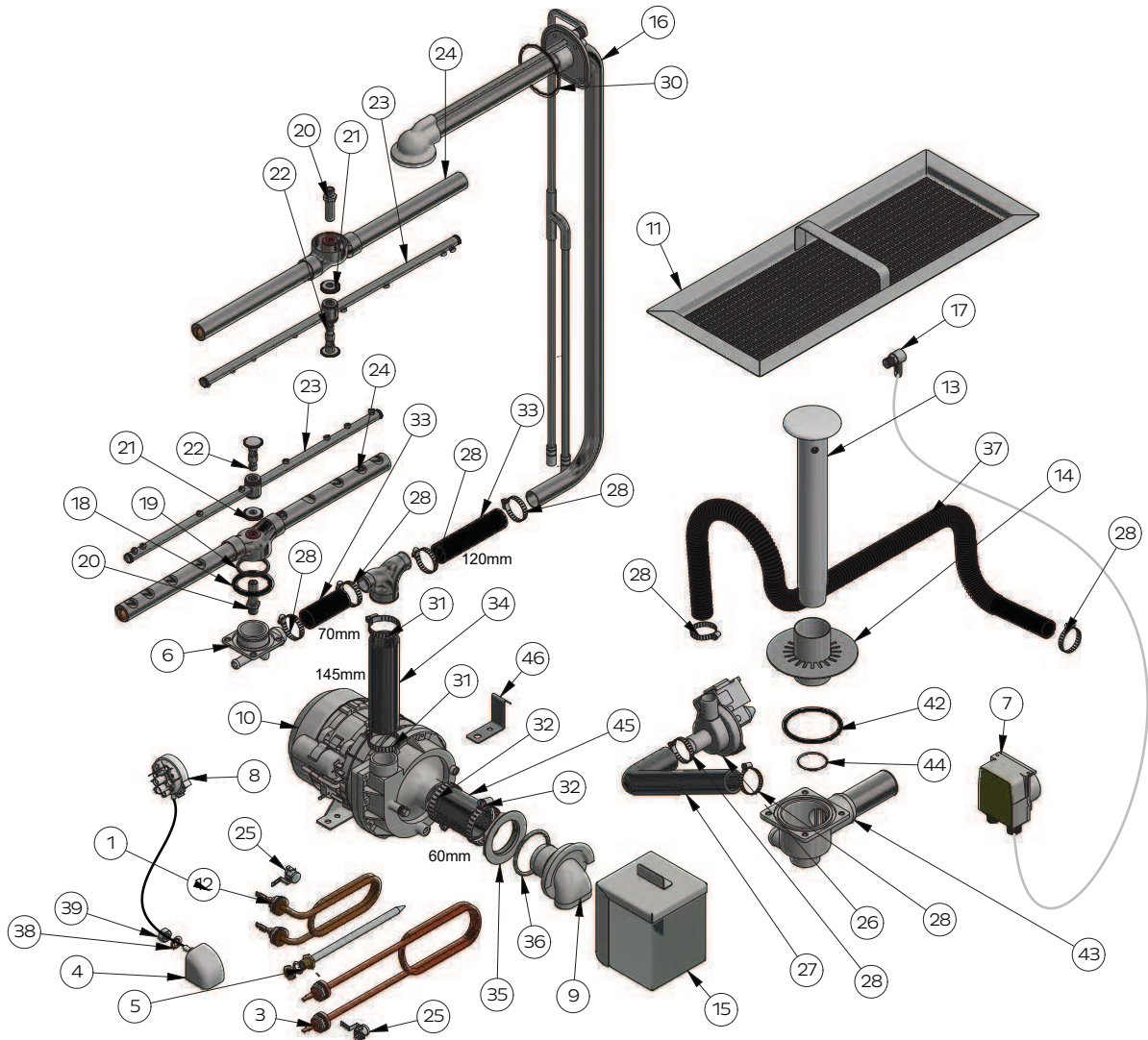
Note 2 - LCD Display Board Replacement Kits

KIT0440069 - For replacement on machines after serial number 133363

KIT0440068 - Use this kit for machines prior to serial number 133363 to replace both boards. The machine will not function unless both boards are replaced.

M2-C Wash System

M2-4 30007 8/08/2019 1-E



Parts List				Parts List			
ITEM	PART NUMBER	DESCRIPTION	QTY	ITEM	PART NUMBER	DESCRIPTION	QTY
1	3067	HOSE PRESSURE SW 4mm	240mm	24	326 10030	ASSY M2/ME/UD SS WASH ARM ASSY	2
2	600 30183	REED SWITCH STEM	1	25	600 30088	TSTAT TY60/R-110C [WITH E BKT]	2
3	600 30159	ELEMENT 2500W STRAIGHT ELEMENT	1	26	600 60102	DRAIN PUMP	1
4	400 90135	PRESSURE BELL CASTING	1	27	328 10037	HOSE M2-4/C DRAIN PUMP INLET	1
5	400 10065	ASSY THERM PROBE POCKET	1	28	ASS16	HOSE CLAMP ASS16	8
6	400 90078	GM/GL WASH TEE	1	29	600 80081	FLAT SS T304 M4 WASHER	2
7	600 30094	DETERGENT PUMP	1	30	ARP235	O-RING ARP235	1
8	600 30479	PRESSURE SWITCH 140/60MM	1	31	ASS24	HOSE CLAMP ASS24	2
9	400 90114	M2 WASH PUMP INLET	1	32	ASS28	HOSE CLAMP ASS28	2
10	600 30299	WASH PUMP 1HP	1	33	6196	HOSE 25mm 2 PLY RADIATOR	190mm
11	328 10003	M2 SCRAP TRAY ASSEMBLY	1	34	6195	HOSE 38mm 2 PLY RADIATOR	145mm
12	600 30226	ELEMENT 2500W 240V (THREE LOOP)	1	35	400 90115	1 3/4" S/S BACKNUT	1
13	400 10145	UPSTAND 305mm LETTER M	1	36	ARP331	O-RING 47.35IDx54OD	1
14	328 10032	M2-4 DRAIN FILTER ASSEMBLY	1	37	600 60105	HOSE DRAIN 2.5M	1
15	328 12018	WASH PUMP FILTER ASSY M2-4	1	38	ARP205	O-RING 11IDx18OD	1
16	303 10003	XP-4/M2-4&C WASH/RINSE MANIFOLD ASSEMBLY	1	39	600 80009	M10 SS HX NUT	1
17	600 30170	DETERGENT BULKHEAD FITTING	1	40	8567	WASHER SPRING SS 304 M5	2
18	ARP328	O-RING 47.35IDx54OD	1	41	8112	SS HEX NUT M4	2
19	400 30190	BLACK ACETAL SLIP RING	1	42	ARP336	O-RING ARP336	1
20	400 30072	M2 WASH SPINDLE	2	43	328 12016	M2(4) DRAIN CASTING ASSEMBLY	1
21	400 30397	NUT WASH SPINDLE 6mm	2	44	ARP38x2	O-RING ARP38x2 N70	1
22	400 30398	RINSE SPINDLE SHORT V2	2	45	6194	HOSE 44mm 2 PLY RADIATOR	60mm
23	400 10239	RINSE ARM 490mm ASSEMBLY w Bush	2	46	326 20071	M2(3) WASH PUMP BRACKET	1

©Washtech Ltd, January 2021

9

Revision 1E

MOFFAT
www.moffat.com.au

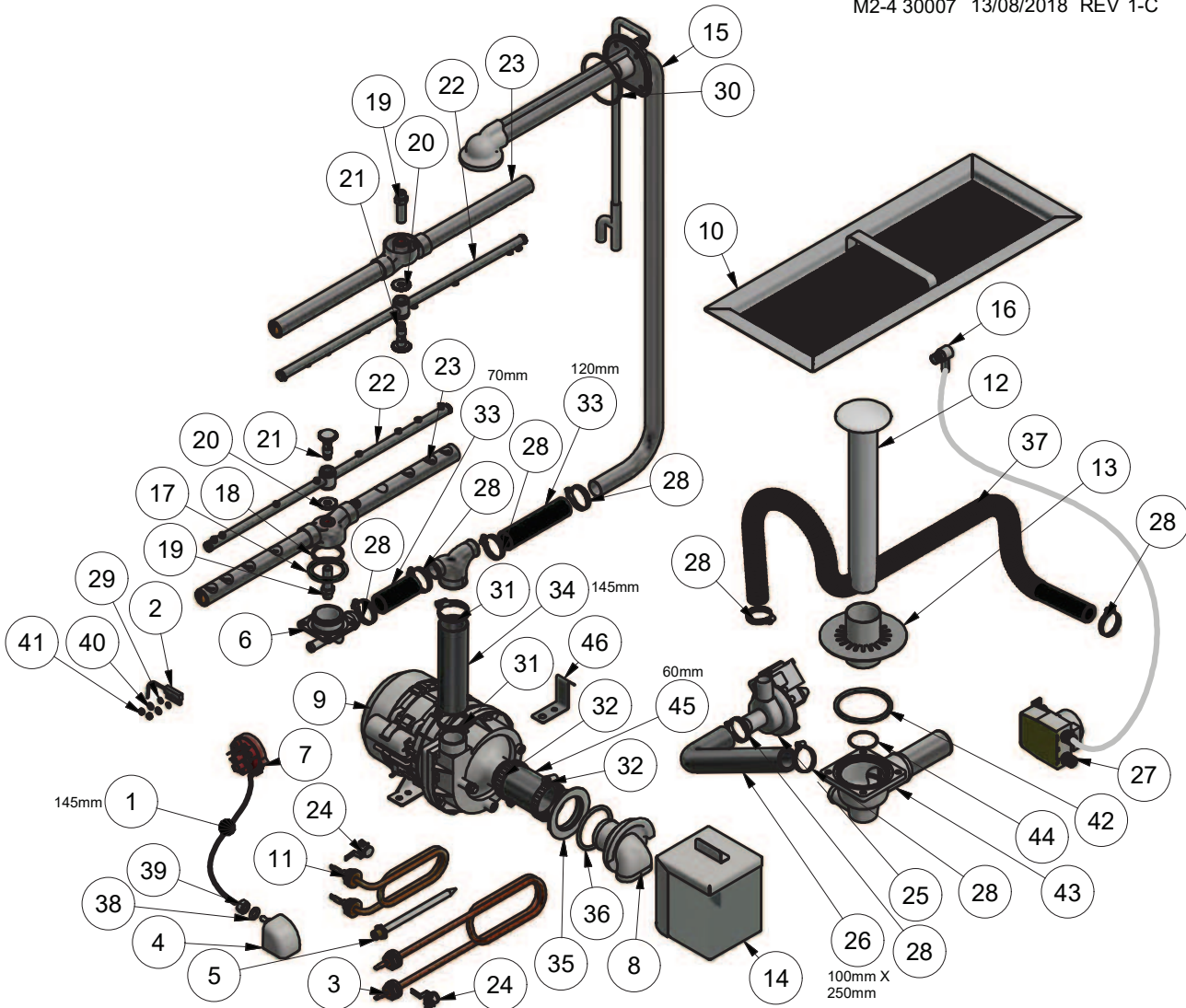
**SPARES
WEBSTORE** spares.moffat.com.au

1300 263 107

sparesinfo@moffat.com.au

M2-C WASH SYSTEM

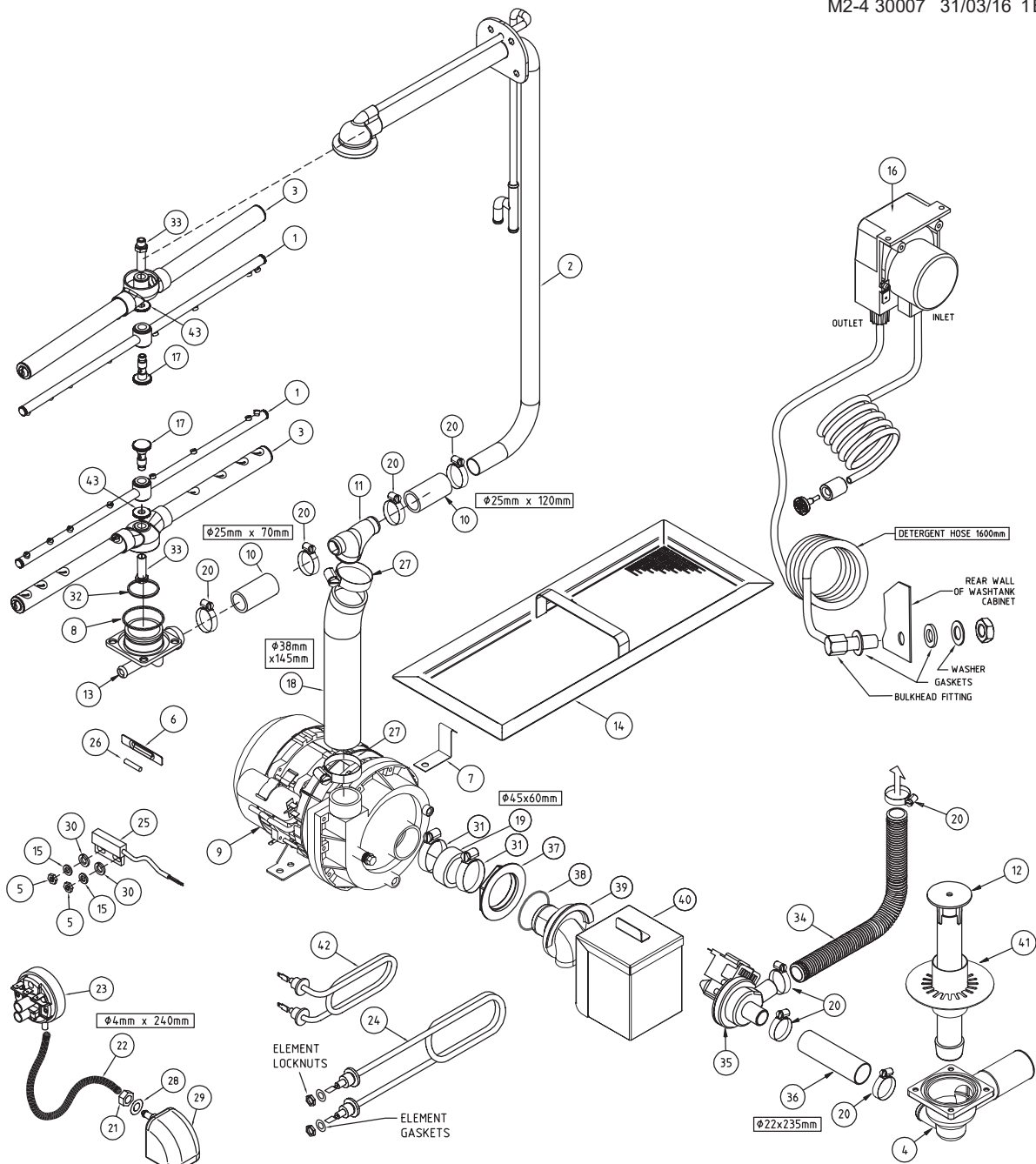
M2-4 30007 13/08/2018 REV 1-C



Parts List				Parts List			
ITEM	PART NUMBER	DESCRIPTION	QTY	ITEM	PART NUMBER	DESCRIPTION	QTY
1	3067	HOSE PRESSURE SW 4mm	240mm	24	600 30088	TSTAT TY60/R-110C [WITH E BKT]	2
2	600 30183	REED SWITCH STEM	1	25	600 60102	DRAIN PUMP	1
3	600 30159	ELEMENT 2500W STRAIGHT ELEMENT	1	26	328 10037	HOSE M2-4/C DRAIN PUMP INLET	1
4	400 90135	PRESSURE BELL CASTING	1	27	600 30094	DETERGENT PUMP KIT	1
5	400 10065	ASSY THERM PROBE POCKET	1	28	ASS16	HOSE CLAMP ASS16	8
6	400 90078	GM/GL WASH TEE	1	29	600 80081	FLAT SS T304 M4 WASHER	2
7	600 30479	PRESSURE SWITCH 140/60MM	1	30	ARP235	O-RING ARP235	1
8	400 90114	M2 WASH PUMP INLET	1	31	ASS24	HOSE CLAMP ASS24	2
9	600 30299	WASH PUMP 1HP	1	32	ASS28	HOSE CLAMP ASS28	2
10	328 10003	M2 SCRAP TRAY ASSEMBLY	1	33	6196	HOSE 25mm 2 PLY RADIATOR	190mm
11	600 30226	ELEMENT 2500W 240V (THREE LOOP)	1	34	6195	HOSE 38mm 2 PLY RADIATOR	145mm
12	400 10145	UPSTAND 305mm LETTER M	1	35	400 90115	1 3/4" S/S BACKNUT	1
13	328 10032	M2-4 DRAIN FILTER ASSEMBLY	1	36	ARP331	O-RING 47.35IDx54OD	1
14	328 12018	WASH PUMP FILTER ASSY M2-4	1	37	600 60105	HOSE DRAIN 2.5M	1
15	329 10015	XP WASH MANIFOLD ASSEMBLY	1	38	ARP205	O-RING 11IDx18OD	1
16	600 30170	DETERGENT BULKHEAD FITTING	1	39	600 80009	M10 SS HX NUT	1
17	ARP328	O-RING 47.35IDx54OD	1	40	8567	WASHER SPRING SS 304 M5	2
18	400 30190	BLACK ACETAL SLIP RING	1	41	8112	SS HEX NUT M4	2
19	400 30072	M2 WASH SPINDLE	2	42	ARP336	O-RING ARP336	1
20	400 30074	NUT M2 WASH SPINDLE	2	43	328 12016	M2(4) DRAIN CASTING ASSEMBLY	1
21	400 30339	RINSE SPINDLE SHORT	2	44	ARP38x2	O-RING ARP38x2 N70	1
22	400 10239	RINSE ARM 490mm ASSEMBLY w Bush	2	45	6194-60	HOSE 44mm 2 PLY RADIATOR	60mm
23	326 10030	ASSY M2/ME/UD SS WASH ARM ASSY	2	46	326 20071	M2(3) WASH PUMP BRACKET	1

M2-C WASH SYSTEM

M2-4 30007 31/03/16 1B



ITEM	CODE	DESCRIPTION	QTY
1	400 10239	RINSE ARM 494MM ASSY WITH BUSH	2
2	329 10015	XP WASH MANIFOLD ASSEMBLY	1
3	326 10030	ASSY M2/ME/UD SS WASH ARM ASSY	2
4	328 12016	M2(4) DRAIN CASTING ASSEMBLY	1
5	8112	NUT HEX SS 304 M4	2
6	123 20004	DOOR MAGNET DIMPLE BRACKET	1
7	326 20071	M2(3) WASH PUMP BRACKET	1
8	ARP328	O-RING	1
9	600 30299	PUMP WASH 1HP ZF 320V SX	1
10	6196	HOSE 25mm 2 PLY RADIATOR	190mm
11	400 90069	TEE 25/38MM REDUCER	1
12	400 10145	UPSTAND 305MM LETTER M	1
13	400 90078	GM/GL WASH TEE CASTING	1
14	328 10003	M2 SCRAP TRAY ASSY	2
15	8567	WASHER SPRING SS 304 MS	2
16	600 30094	PERI PUMP 1.5L/H SEKO-KIT	1
17	400 30339	RINSE SPINDLE SHORT	2
18	6195	HOSE 38mm 2 PLY RADIATOR	205mm
19	6194	HOSE 45mm 2 PLY RADIATOR	60mm
20	ASS16	HOSECLIP ASS16	7
21	600 80009	NUT SS 304 HEX M10	1

ITEM	CODE	DESCRIPTION	QTY
22	3067	HOSE PRESSURE SW VACUUM 4mm	300mm
23	600 30479	PRESSURE SWITCH 140/60MM	1
24	600 30159	ELEMENT WASH 2.5KW STRAIGHT	1
25	600 30183	REED SWITCH STEM	1
26	600 30257	DOOR & RINSE SWITCH MAGNET 6x30	1
27	ASS24	ASS24 HOSE CLIP	2
28	ARP205	O RING 205	1
29	400 90135	SQUARE PRESSURE BELL CASTING	1
30	600 80081	M4 WASHER 304	2
31	ASS28	ASS28 HOSECLIP	2
32	400 30190	SLIP RING BLACK ACETAL	1
33	400 30072	M2 WASH SPINDLE	1
34	600 60105	DRAIN HOSE 2.5M	1
35	600 60102	DRAIN PUMP	1
36	6197	HOSE 22MM 2 PLY RADIATOR	235mm
37	400 90115	1 3/4" S/S BACKNUT	1
38	ARP331	O-RING ARP331	1
39	400 90114	M2 WASH PUMP INLET	1
40	328 12018	M2(4) WASH PUMP FILTER ASSEMBLY	1
41	328 10032	M2-4 DRAIN FILTER ASSEMBLY	1
42	600 30226	ELEMENT 240V 2.5KW BENT	1
43	400 30074	NUT M2 WASH SPINDLE	2

Wash Pump

Part Number

600 30299

Function

Pumps water from the wash tank to the wash arms providing a recirculating wash cycle.

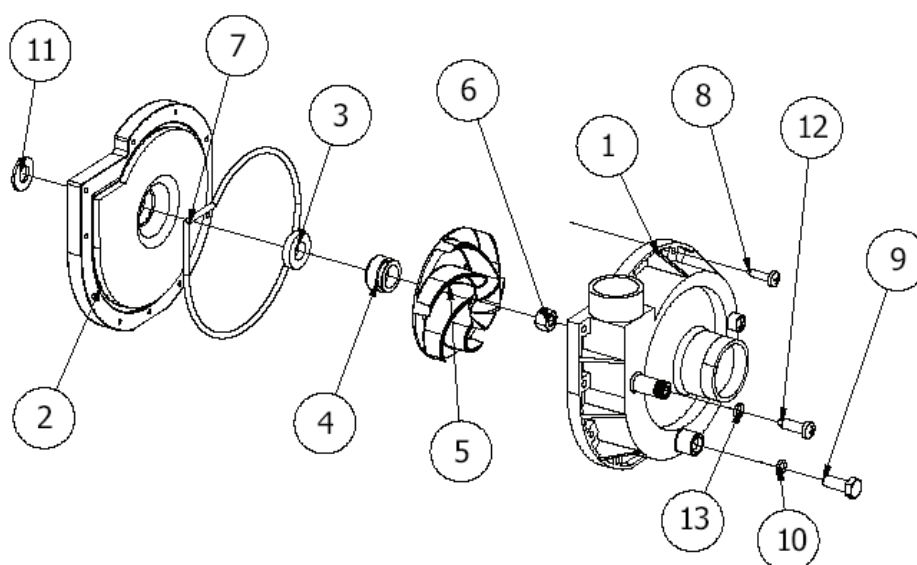
Description

Electric Pump ZF 320V SX

Power:	HP 0.93 Kw 0.68	Speed	2800 rpm
Voltage:	230 V 50Hz	Protection:	IP 20
Amperes:	3.0 A	Hm Min:	1.0 m
Capacitor:	12.5 uF	Hm Max:	12.3 m

Diagram

Hydraulic parts



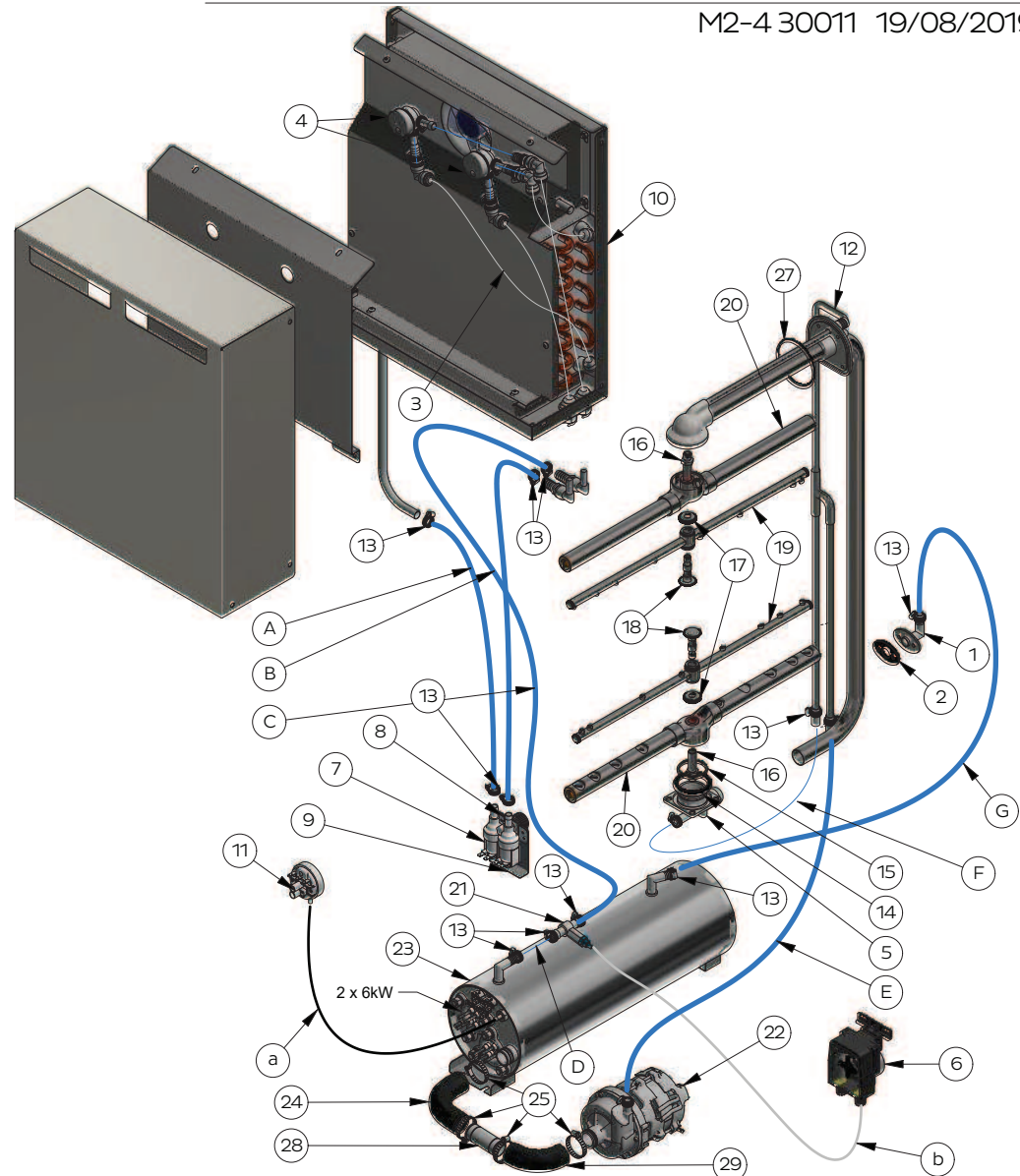
ITEM	DESCRIPTION	PART #	ITEM	DESCRIPTION	PART #
1	Volute	600 41116	7	O-ring	600 41113
2	Pump flange	600 41117	8	Screw	-
3	Fixed seal	600 41110	9	Plug screw	-
4	Rotating seal	600 41111	10	O-ring plug	-
5	Impeller	600 41115	12	Screw hose connector	-
6	Nut	600 41112	13	O-ring hose connector	-

Replacement

Drain the wash tank and switch off the power.
Disconnect the wires from the pump connectors and the pump capacitor. .
Release the hose clamps on the inlet and outlet pump hoses and remove the pump.
Replace in reverse order.

M2C-C3 RINSE SYSTEM

M2-4 30011 19/08/2019 3-C

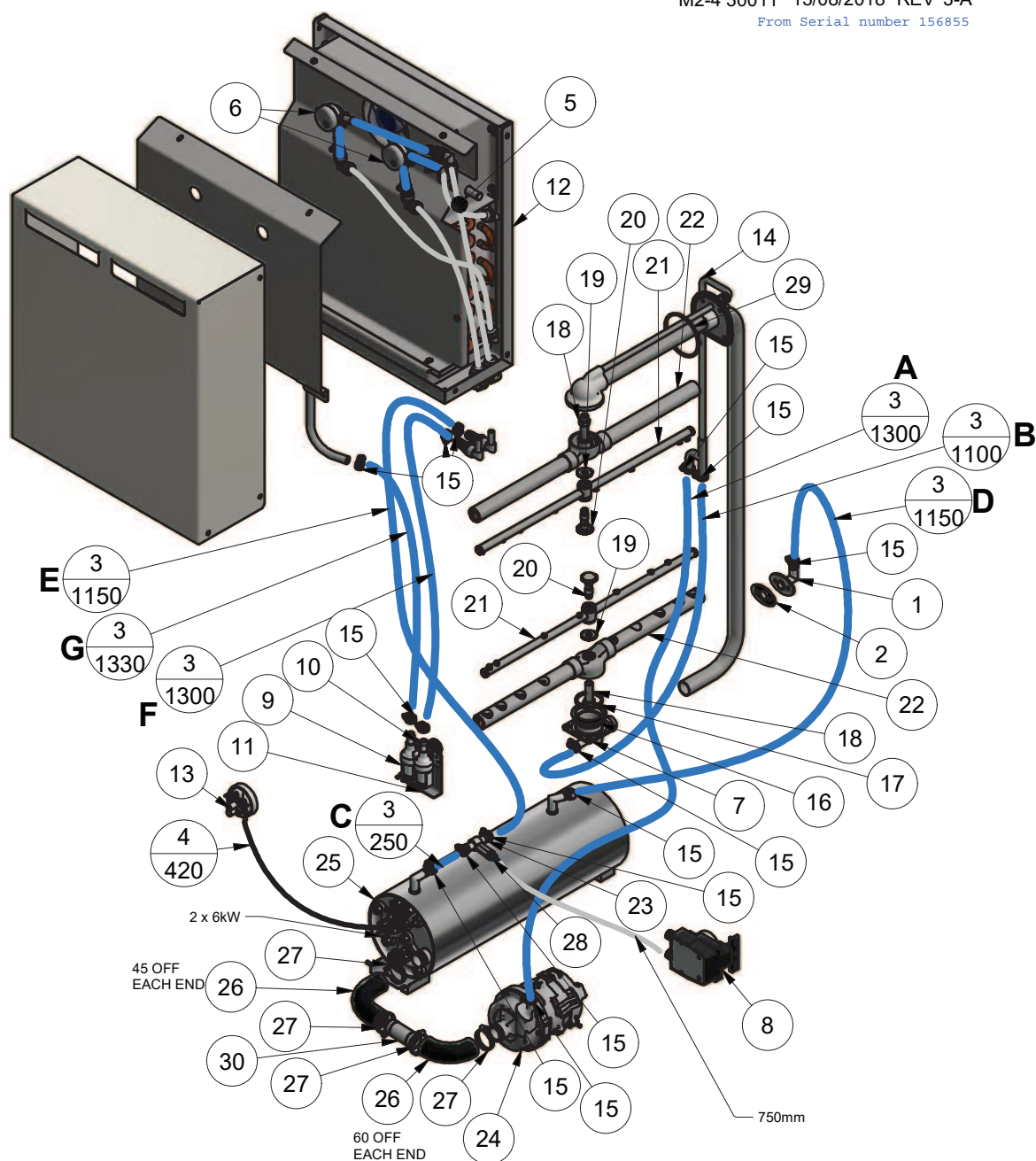


Parts List				Parts List			
ITEM	PART NUMBER	DESCRIPTION	QTY	ITEM	PART NUMBER	DESCRIPTION	QTY
1	328 15005	M2 OVERFLOW TUBE ASSY	1	20	326 10030	ASSY M2/ME/UD SS WASH ARM ASSY	2
2	400 90096	RINSE DISTRIBUTION GASKET	1	21	280 30003	TEE BRACON RINSE AID	1
3	600 60514	TUBE 3/8" OD POLYETHYLENE	1.7m	22	600 30508	RINSE PUMP 0.18KW	1
4	600 60053	VACUUM BREAKER 1/2" ASSY	2	23	400 10351	RINSE TANK 150MM SS 2 x 6KW ASSEMBLY	1
5	400 90078	GM/GL WASH TEE	1	24	600 90074	UHB25 HOSE BEND (CUT 45mm OFF EACH END)	1
6	600 30480	RINSE AID PUMP PERI ADJUSTABLE	1	25	ASS16	HOSE CLAMP ASS16	12
7	3341	SOLENOID VALVE GL 2 WAY 90 DEGREE	1	26	600 30487	NON RETURN VALVE	1
8	1247	INLET SOLENOID SUPPORT	1	27	ARP235	O-RING ARP235	1
9	400 20038	BKT SOLENOID/DET.PUMP MOUNTING	1	28	300 20002	TUBE JOINER SS	1
10	400 10335	C3 CONDENSER ASSEMBLY	1	29	600 90074	UHB25 HOSE BEND (CUT 60mm OFF EACH END)	1
11	400 10214	PRES SWITCH B/TANK & DRAIN	1	A	600 60073	HOSE HOTOTAL 11 x 19mm	1330 mm
12	303 10003	XP-4/M2-4&C WASH/RINSE MANIFOLD ASSEMBLY	1	B	600 60073	HOSE HOTOTAL 11 x 19mm	1330 mm
13	ASS05	HOSE CLAMP	14	C	600 60073	HOSE HOTOTAL 11 x 19mm	1150 mm
14	ARP328	O-RING 47.35IDx54OD	1	D	600 60073	HOSE HOTOTAL 11 x 19mm	250 mm
15	400 30190	BLACK ACETAL SLIP RING	1	E	600 60073	HOSE HOTOTAL 11 x 19mm	1330 mm
16	400 30072	M2 WASH SPINDLE	2	F	600 60073	HOSE HOTOTAL 11 x 19mm	1100 mm
17	400 30397	NUT WASH SPINDLE 6mm	2	G	600 60073	HOSE HOTOTAL 11 x 19mm	1150 mm
18	400 30398	RINSE SPINDLE SHORT V2	2	a	3067	HOSE PRESSURE SW 4mm	420 mm
19	400 10239	RINSE ARM 490mm ASSEMBLY w/ Bush	2	b		RINSE AID PUMP OUTLET TUBE	750 mm

M2C - C3 RINSE SYSTEM

M2-4 30011 13/08/2018 REV 3-A

From Serial number 156855

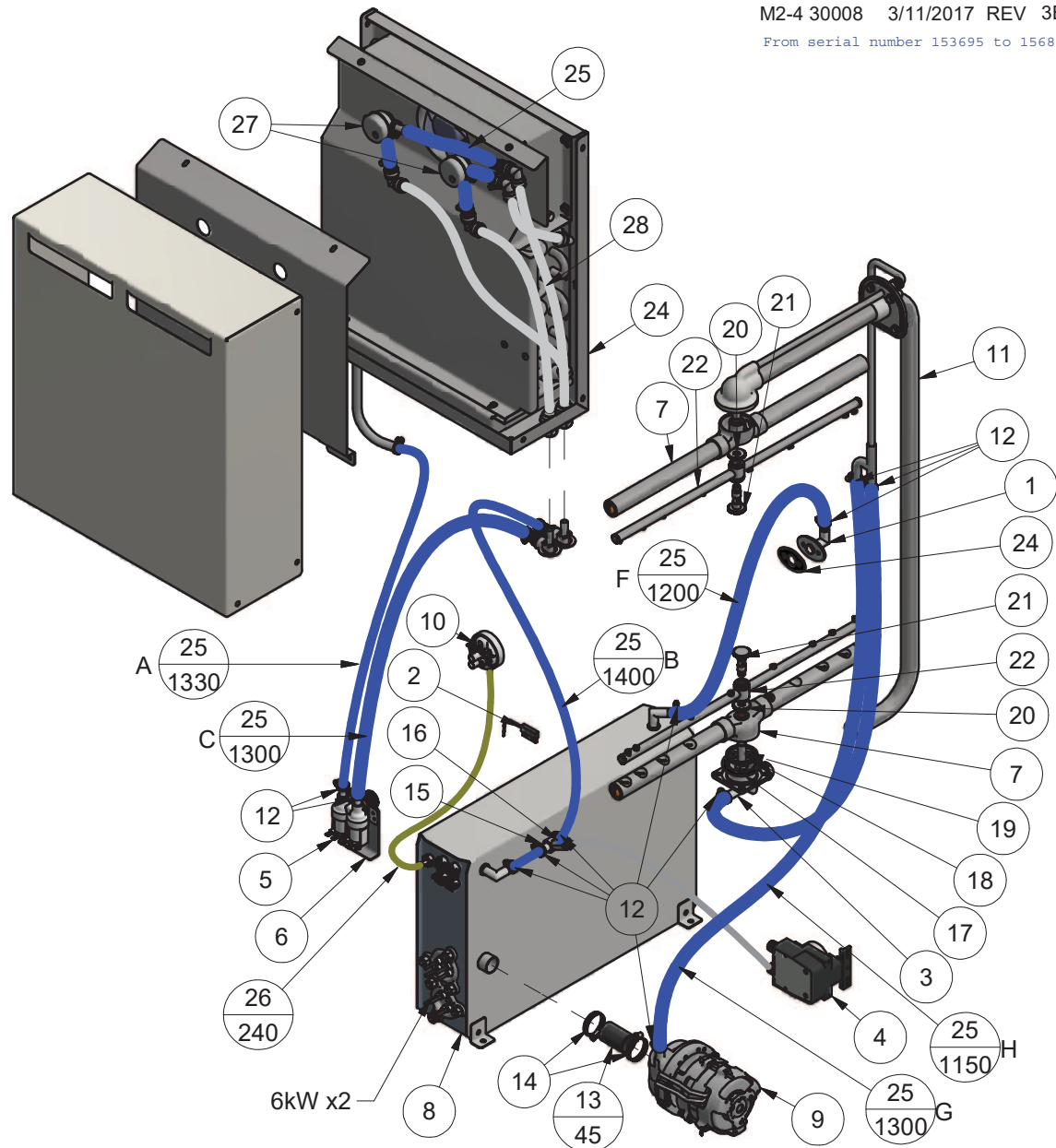


Parts List				Parts List			
ITEM	PART NUMBER	DESCRIPTION	QTY	ITEM	PART NUMBER	DESCRIPTION	QTY
1	328 10022	M2 OVERFLOW TUBE ASSY	1	16	ARP328	O-RING 47.35IDx54OD	1
2	400 90096	RINSE DISTRIBUTION GASKET	1	17	400 30190	BLACK ACETAL SLIP RING	1
3	600 60073	HOSE HOTOTAL 11 x 19mm	8m	18	400 30072	M2 WASH SPINDLE	2
4	3067	HOSE PRESSURE SW 4mm	420mm	19	400 30074	NUT M2 WASH SPINDLE	2
5	600 60514	TUBE 3/8" OD POLYETHYLENE	1.7m	20	400 30339	RINSE SPINDLE SHORT	2
6	600 60053	VACUUM BREAKER 1/2" ASSY	2	21	400 10239	RINSE ARM 490mm ASSEMBLY w Bush	2
7	400 90078	GM/GL WASH TEE	1	22	326 10030	ASSY M2/ME/UD SS WASH ARM ASSY	2
8	600 30480	RINSE AID PUMP PERI ADJUSTABLE	1	23	280 30003	TEE BRACON RINSE AID	1
9	3341	SOLENOID VALVE GL 2 WAY 90 DEGREE	1	24	600 30508	RINSE PUMP 0.18KW	1
10	1247	INLET SOLENOID SUPPORT	1	25	400 10351	RINSE TANK 150MM SS 2 x 6KW ASSEMBLY	1
11	400 20038	BKT SOLENOID/DET.PUMP MOUNTING	1	26	600 90074	UHB25 HOSE BEND	2
12	400 10335	C3 CONDENSER ASSEMBLY	1	27	ASS16	HOSE CLAMP ASS16	12
13	400 10214	PRES SWITCH B/TANK & DRAIN	1	28	600 30487	NON RETURN VALVE	1
14	329 10015	XP WASH MANIFOLD ASSEMBLY	1	29	ARP235	O-RING ARP235	1
15	ASS05	HOSE CLAMP	14	30	300 20002	TUBE JOINER SS	1

M2C - C3 RINSE SYSTEM

M2-4 30008 3/11/2017 REV 3B

From serial number 153695 to 156854

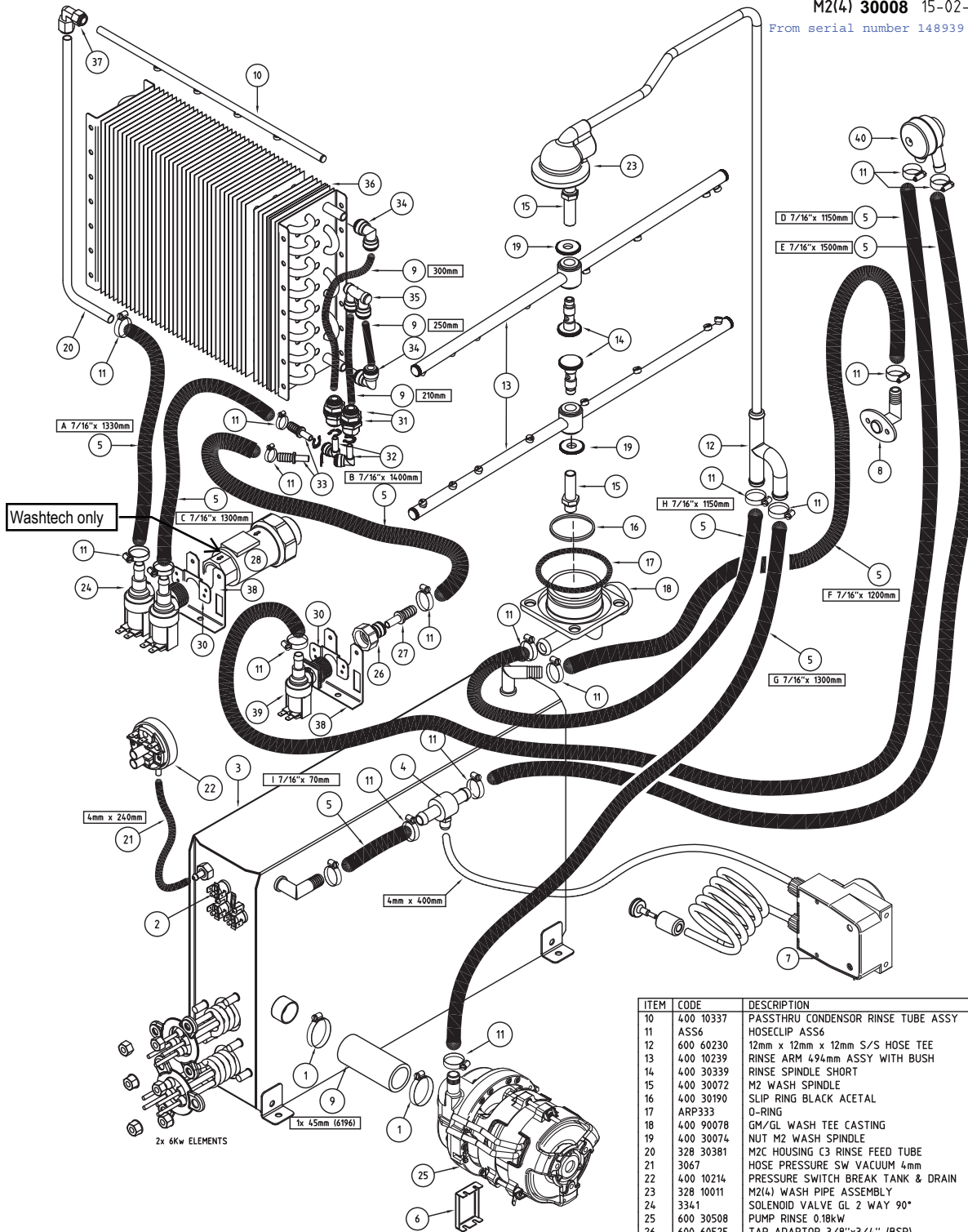


ITEM	P NO	DESCRIPTION	QTY	ITEM	P NO	DESCRIPTION	QTY
1	328 10022	M2 OVERFLOW TUBE ASSY	1	15	280 30003	TEE BRACKTON RINSE AID	1
2	600 30183	REED SWITCH STEM	1	16	600 30487	NON RETURN VALVE	1
3	400 90078	GM/GL WASH TEE	1	17	ARP328	O-RING 47.35IDx54OD	1
4	600 30480	RINSE AID PERI PUMP ADJUSTABLE	1	18	400 30190	BLACK ACETAL SLIP RING	1
5	3341	SOLENOID VALVE GL 2 WAY 90 DEG	1	19	400 30072	M2 WASH SPINDLE	2
6	400 20038	BKT SOLENOID/DET.PUMP MOUNTING	1	20	400 30074	NUT M2 WASH SPINDLE	2
7	326 10030	ASSY M2/ME/UD SS WASH ARM ASSY	2	21	400 30339	RINSE SPINDLE SHORT	2
8	400 10252	BREAK TANK 2 ELEMENTS ASSEMBLY	1	22	400 10239	RINSE ARM 490mm ASSY	2
9	600 30508	RINSE PUMP 0.18KW	1	23	400 90096	RINSE DISTRIBUTION GASKET	1
10	400 10214	PRES SWITCH B/TANK & DRAIN	1	24	400 10335	C3 CONDENSER ASSEMBLY	1
11	329 10015	XP WASH MANIFOLD ASSEMBLY	1	25	600 60073	HOSE HOTOTAL 11 x 19mm	8m
12	ASS05	HOSE CLAMP	14	26	3067	HOSE PRESSURE SW 4mm	0.24m
13	6196	HOSE 25mm 2 PLY RADIATOR	45mm	27	600 60053	VACUUM BREAKER 1/2" ASSY	2
14	ASS16	HOSE CLAMP ASS16	2	28	600 60514	TUBE 3/8" OD POLYETHYLENE	1.7m

M2C-C3 RINSE SYSTEM

M2(4) 30008 15-02-17 3 A

From serial number 148939 to 153694

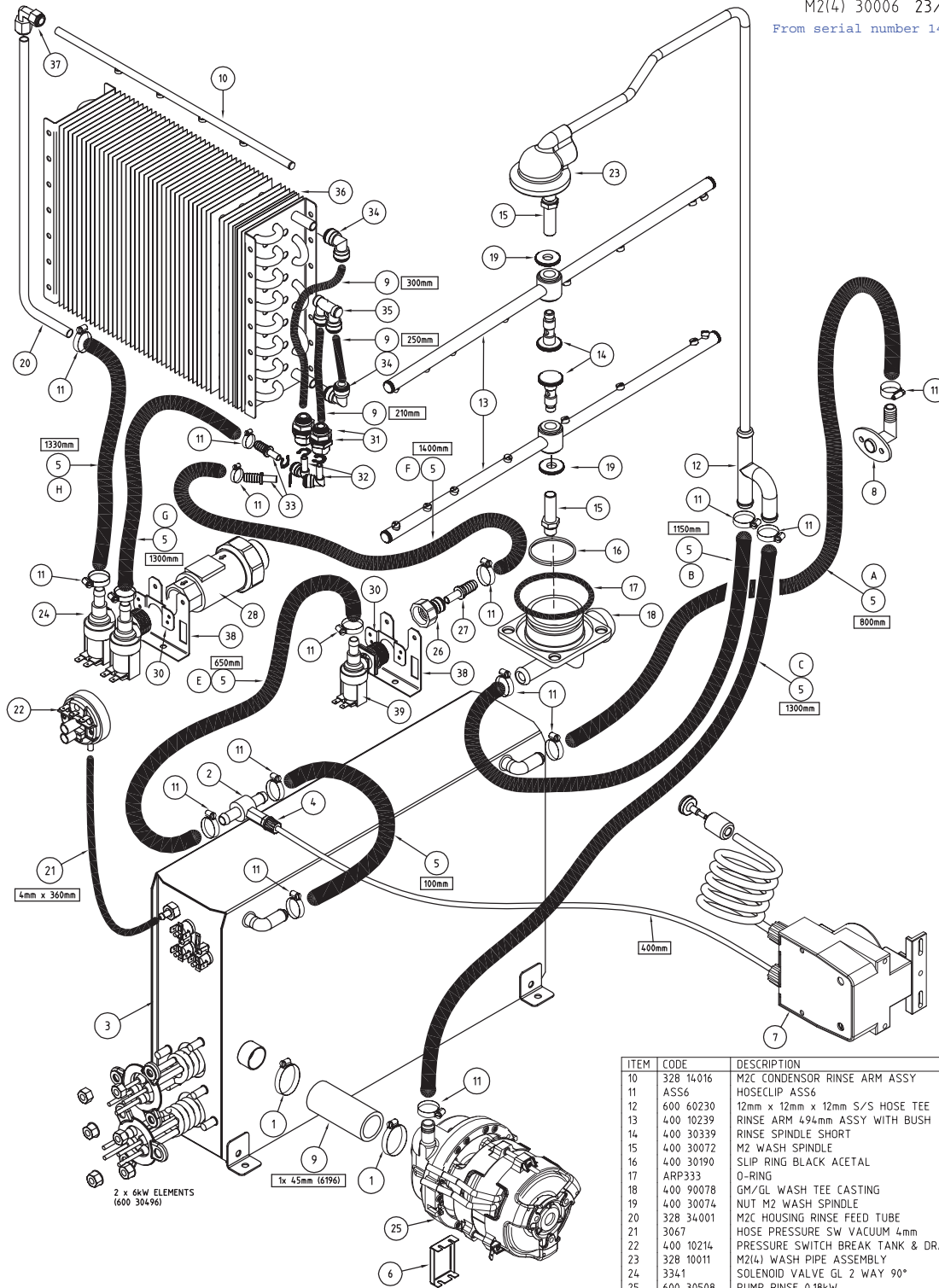


ITEM	CODE	DESCRIPTION	QTY
1	ASS16	HOSECLIP ASS16	2
2	600 30088	TSTAT TY60/R-110C (WITH E BKT)	3
3	400 10252	BREAK TANK 2 ELEMENTS ASSEMBLY	1
4	600 30324	RINSE AID KIT	1
5	600 60073	HOTOTAL HOSE 11mm X 19mm	2840mm
6	208 20035	RINSE PUMP SUPPORT BRKT	1
7	600 30480	PERISTALTIC PUMP RA ADJUSTABLE	1
8	328 10022	M2 OVERFLOW TUBE ASSY	1
9	600 60514	3/8" PVC TUBING	1

ITEM	CODE	DESCRIPTION	QTY
10	400 10337	PASSTHRU CONDENSOR RINSE TUBE ASSY	1
11	ASS6	HOSECLIP ASS6	17
12	600 60230	12mm x 12mm x 12mm S/S HOSE TEE	1
13	400 10239	RINSE ARM 494mm ASSY WITH BUSH	2
14	400 30339	RINSE SPINDLE SHORT	2
15	400 30072	M2 WASH SPINDLE	2
16	400 30190	SLIP RING BLACK ACETAL	1
17	ARP333	O-RING	1
18	400 90078	GM/GL WASH TEE CASTING	1
19	400 30074	NUT M2 WASH SPINDLE	2
20	328 30381	M2C HOUSING C3 RINSE FEED TUBE	1
21	3067	HOSE PRESSURE SW VACUUM 4mm	1
22	400 10214	PRESSURE SWITCH BREAK TANK & DRAIN	1
23	328 10011	M2(4) WASH PIPE ASSEMBLY	1
24	3341	SOLENOID VALVE GL 2 WAY 90°	1
25	600 30508	PUMP RINSE 0.18kw	1
26	600 60525	TAP ADAPTOR 3/8"x3/4" (BSP)	1
27	600 60518	TUBE (3/8") TO HOSE (1/2") STEM	1
28	400 10132	DUAL CHECK VALVE ASSY	1
29	280 30003	TEE BRACKTON RINSE AID	1
30	400 20038	SOLENOID / DET PUMP MOUNTING BRKT	1
31	600 60237	BULKHEAD FITTING 3/8" TUBE	2
32	600 60239	ELBOW 3/8 x3/8 STEM	3
33	600 60518	TAILPEICE	3
34	600 60517	CONNECTOR REDUCING ELBOW 1/2"- 3/8"	2
35	600 60516	U-BEND 3/8"	1
36	600 90160	M2C CONDENSOR	1
37	600 60520	1/2" COMPRESSON UNION ELBOW	1
38	1247	SOLENOID SUPPORT BRKT	1
39	3342	VALVE 1 WAY 90DEG SOLENOID	1
40	600 60053	VACUUM BREAKER 1/2" DIAPHS ASSY	1

WASHTECH M2C RINSE SYSTEM

M2(4) 30006 23/11/16 3E
From serial number 144591 to 148939

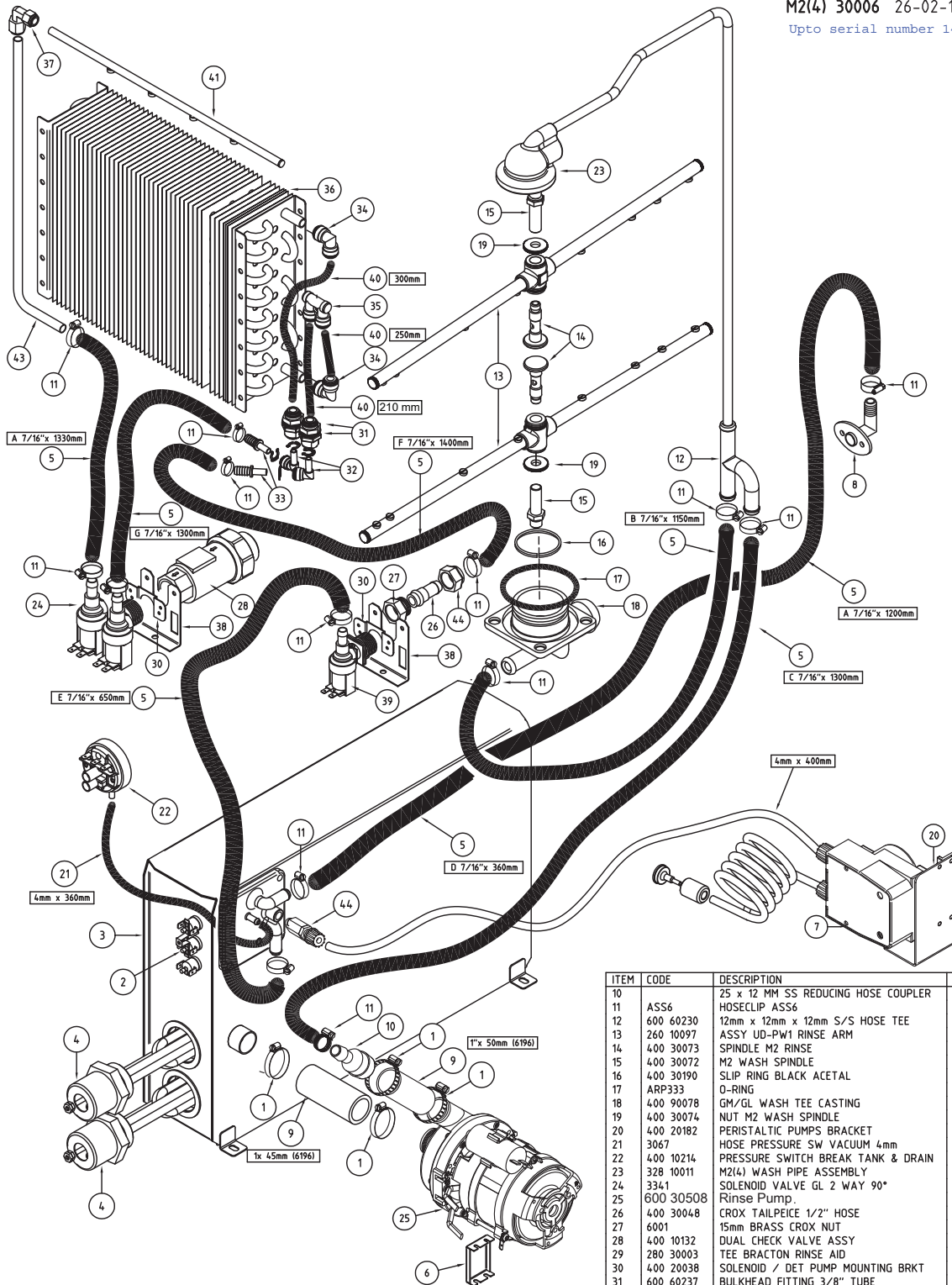


ITEM	CODE	DESCRIPTION	QTY
1	ASS16	HOSECLIP ASS16	2
2	280 30003	RINSE AID TEE	1
3	400 10252	BREAK TANK 2 ELEMENTS ASSEMBLY	1
4	600 30487	VALVE NEW NON RETURN 1/8 INOX SPRING	1
5	600 60073	HOTOTAL HOSE 11mm X 19mm	2840mm
6	208 20035	RINSE PUMP SUPPORT BRKT	1
7	600 30480	PERISTALTIC PUMP RA ADJUSTABLE	1
8	328 10022	M2 OVERFLOW TUBE ASSY	1
9	600 60514	3/8" PVC TUBE	1

ITEM	CODE	DESCRIPTION	QTY
10	328 14016	M2C CONDENSOR RINSE ARM ASSY	1
11	ASS6	HOSECLIP ASS6	10
12	600 60230	12mm x 12mm x 12mm S/S HOSE TEE	1
13	400 10239	RINSE ARM 494mm ASSY WITH BUSH	2
14	400 30339	RINSE SPINDLE SHORT	2
15	400 30072	M2 WASH SPINDLE	2
16	400 30190	SLIP RING BLACK ACETAL	1
17	ARP333	O-RING	1
18	400 90078	GM/GL WASH TEE CASTING	1
19	400 30074	NUT M2 WASH SPINDLE	2
20	328 34001	M2C HOUSING RINSE FEED TUBE	1
21	3067	HOSE PRESSURE SW VACUUM 4mm	1
22	400 10214	PRESSURE SWITCH BREAK TANK & DRAIN	1
23	328 10011	M2(4) WASH PIPE ASSEMBLY	1
24	3341	SOLENOID VALVE GL 2 WAY 90°	1
25	600 30508	PUMP RINSE 0.18kW	1
26	600 60525	TAP ADAPTOR 3/8"x3/4" (BSP)	1
27	600 60518	TUBE (3/8") TO HOSE (1/2") STEM	1
28	400 10132	DUAL CHECK VALVE ASSY	1
29	280 30003	TEE BRACKTON RINSE AID	1
30	400 20038	SOLENOID / DET PUMP MOUNTING BRKT	1
31	600 60237	BULKHEAD FITTING 3/8" TUBE	2
32	600 60239	ELBOW 3/8 x3/8 STEM	3
33	600 60518	TAILPEICE	1
34	600 60517	CONNECTOR REDUCING ELBOW 1/2"- 3/8"	2
35	600 60516	U-BEND 3/8"	1
36	600 90160	M2C CONDENSOR	1
37	600 60502	1/2" COMPRESSION UNION ELBOW	1
38	1247	SOLENOID SUPPORT BRKT	1
39	3342	VALVE 1 WAY 90DEG SOLENOID	1

WASHTECH M2C RINSE SYSTEM

M2(4) 30006 26-02-16 3 A
Upto serial number 144590



ITEM	CODE	DESCRIPTION	QTY
1	ASS16	HOSECLIP ASS16	4
2	600 30088	TSTAT TY60/R-110C (WITH E BKT)	3
3	328 14001	M2C BREAK TANK ASSEMBLY	1
4	3007	ELEMENT 6kW RINSE	1
5	600 60073	HOTOTAL HOSE 11mm X 19mm	2840mm
6	208 20035	RINSE PUMP SUPPORT BRKT	1
7	600 30480	PERISTALTIC PUMP RA ADJUSTABLE	1
8	328 10022	M2 OVERFLOW RINSE TUBE ASSY	1
9	6196	HOSE 25mm 2 PLY RADIATOR	2

ITEM	CODE	DESCRIPTION	QTY
10		25 x 12 MM SS REDUCING HOSE COUPLER	1
11	ASS6	HOSECLIP ASS6	10
12	600 60230	12mm x 12mm x 12mm S/S HOSE TEE	1
13	260 10097	ASSY UD-PW1 RINSE ARM	2
14	400 30073	SPINDLE M2 RINSE	2
15	400 30072	M2 WASH SPINDLE	2
16	400 30190	SLIP RING BLACK ACETAL	1
17	ARP333	O-RING	1
18	400 90078	GM/GL WASH TEE CASTING	1
19	400 30074	NUT M2 WASH SPINDLE	2
20	400 20182	PERISTALTIC PUMPS BRACKET	1
21	3067	HOSE PRESSURE SW VACUUM 4mm	1
22	400 10214	PRESSURE SWITCH BREAK TANK & DRAIN	1
23	328 10011	M2(4) WASH PIPE ASSEMBLY	1
24	3341	SOLENOID VALVE GL 2 WAY 90°	1
25	600 30508	Rinse Pump	1
26	400 30048	CROX TAILPEICE 1/2" HOSE	1
27	6001	15mm BRASS CROX NUT	1
28	400 10132	DUAL CHECK VALVE ASSY	1
29	280 30003	TEE BRACKTON RINSE AID	1
30	400 20038	SOLENOID / DET PUMP MOUNTING BRKT	1
31	600 60237	BULKHEAD FITTING 3/8" TUBE	2
32	600 60239	ELBOW 3/8 x3/8 STEM	3
33	600 60518	TAILPEICE	3
34	600 60517	CONNECTOR REDUCING ELBOW 1/2"- 3/8"	2
35	600 60516	U-BEND 3/8"	1
36	600 90160	M2C CONDENSOR	1
37	600 60502	1/2" COMPRESSION UNION ELBOW	1
38	1247	SOLENOID SUPPORT BRKT	1
39	3342	VALVE 1 WAY 90DEG SOLENOID	1
40	600 60514	3/8" PVC TUBE	1
41	328 14016	M2C CONDENSOR RINSE ARM ASSY	1
42	6040	SOCKET BRASS CROX M&F 20x15mm	1
43	328 34001	M2C HOUSING RINSE FEED TUBE	1
44	600 30487	VALVE NEW NON RETURN 1/8 INOX SPRING	1

Rinse Pump

Part Number

600 30508

Function

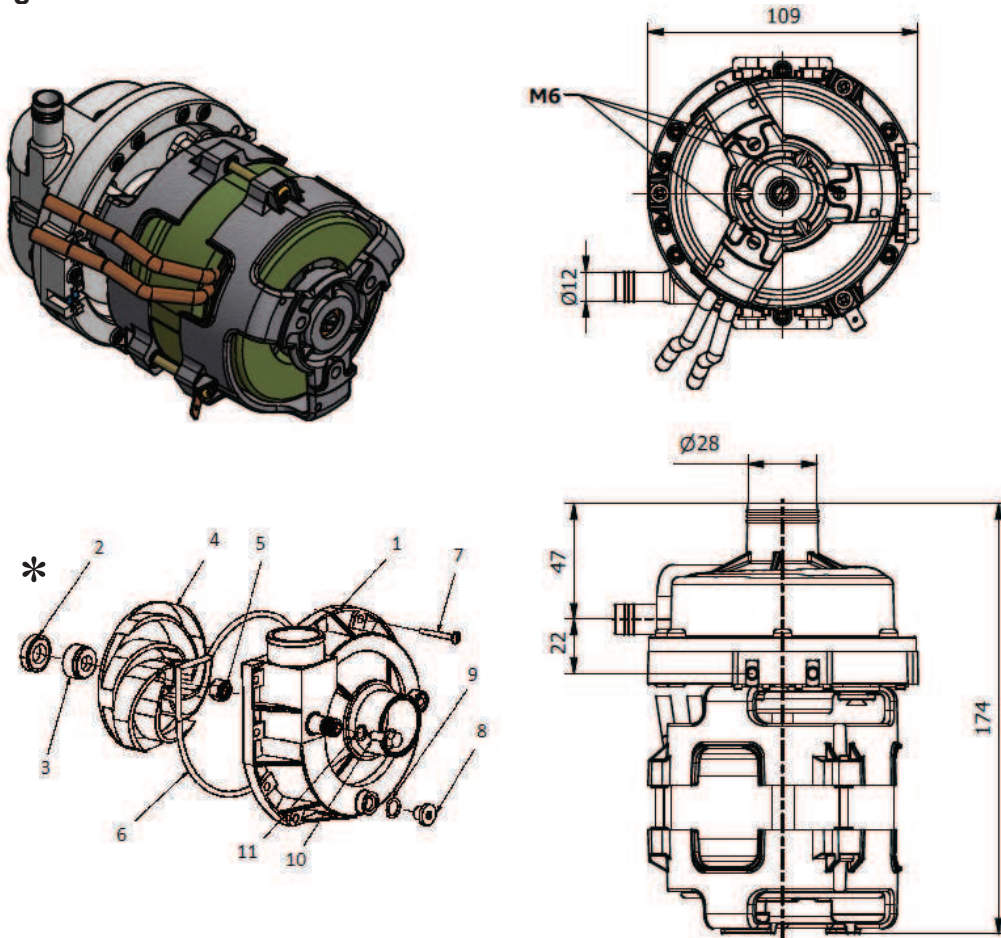
Pumps water from the rinse tank to the rinse arms providing a hot rinse cycle.

Description

Electric Pump CRC-R-DX

Power:	0.18 kW	Capacitor:	4 uF
Voltage:	230 V 50 Hz	IP:	X0
Amperes:	0.8 A	Speed:	2800 RPM

Diagram



*Exploded image is generic for illustration only – not a scale image of the actual part

ITEM	DESCRIPTION	PART NO:
2	Fixed Seal	600 41224
3	Rotating Seal	600 41223
4	Impeller	600 41225
6	Housing Gasket	600 41179
	Capacitor	600 30539

Replacement

Drain the rinse tank and switch off the power.
Disconnect the wires from the pump connectors.
Release the hose clamps on the inlet and outlet pump hoses and remove the pump.
Replace in reverse order.

RINSE TANK 150MM SS 2 x 6KW ASSEMBLY

400 10351 11/06/2018 REV 1-A

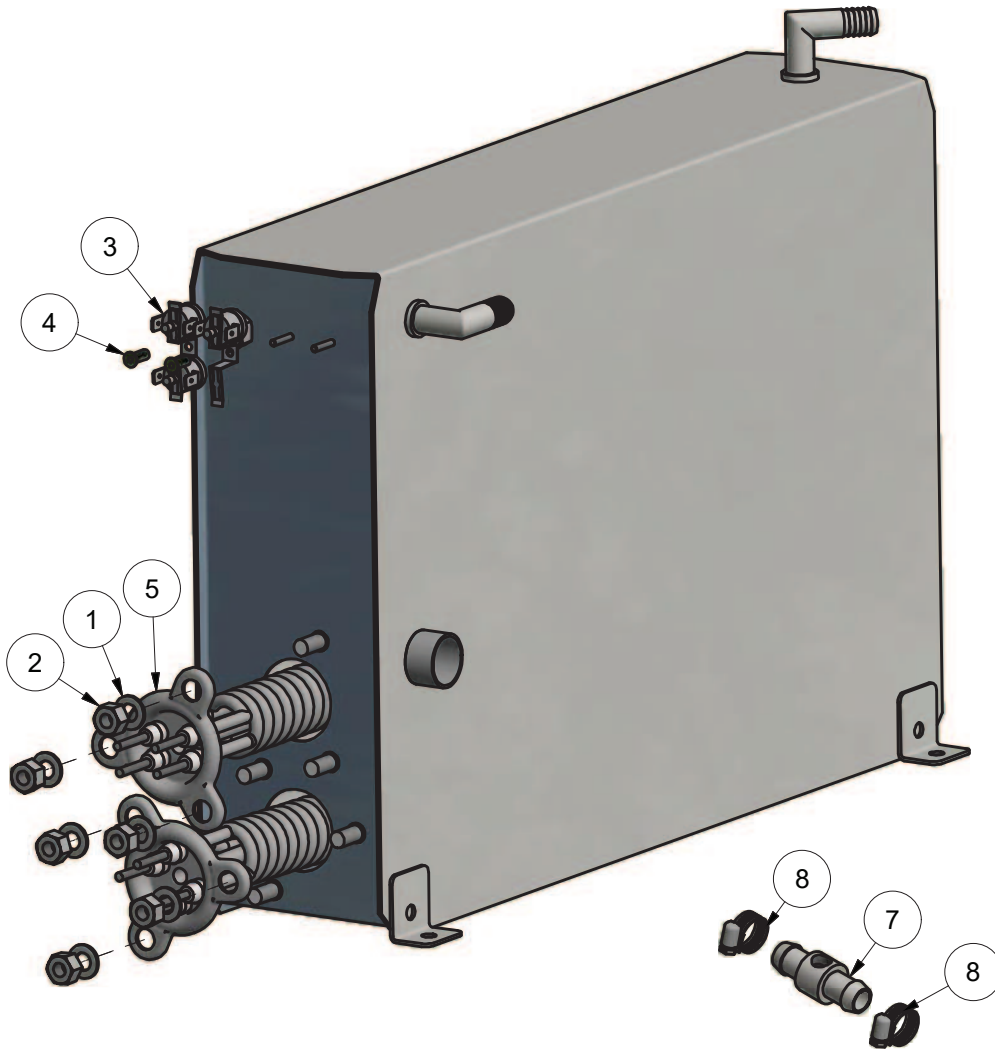
From Serial number 156855



Parts List			
ITEM	PART NUMBER	DESCRIPTION	QTY
1	600 30088	TSTAT TY60/R-110C [WITH E BKT]	3
2	600 30496	ELEMENT RINSE 6kW	2
3	8568	WASHER SPRING SS 304 M8	6
4	600 80023	NUT SS M8	6

BREAK TANK 2 ELEMENTS ASSEMBLY

400 10252 9/09/2016 REV 1-A



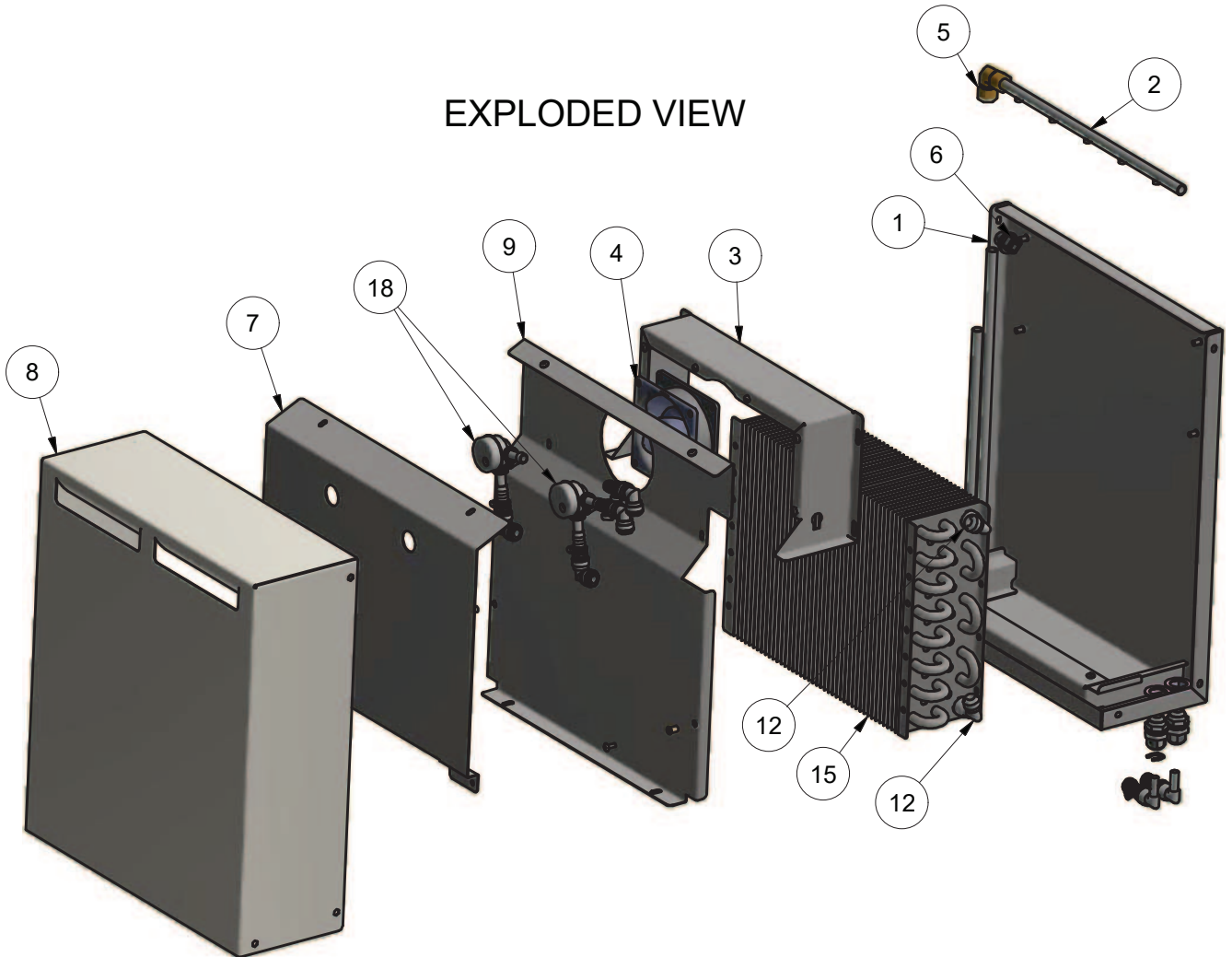
Spares supplied with fittings shown

Parts List			
ITEM	PART NUMBER	DESCRIPTION	QTY
1	600 80022	WASHER FL SS 304 M8x16x1.2mm	6
2	600 80063	NUT NYLOC SS M8	6
3	600 30088	TSTAT TY60/R-110C [WITH E BKT]	3
4	600 80064	STANDOFF M3 x 12	2
5	600 30496	ELEMENT RINSE 6kW	2
6	400 10251	BREAK TANK 2 ELEMENTS WITH STUDS SUB-ASSEMBLY	1
7	280 30003	TEE BRACON RINSE AID	1
8	ASS05	ASS05 HOSECLIP	2

C3 CONDENSER ASSEMBLY

400 10335 21/06/2017 REV 3-C

EXPLODED VIEW



Parts List			
ITEM	PART NUMBER	DESCRIPTION	QTY
1	400 10336	PASSTHRU CONDENSOR HOUSING SUB-ASSY	1
2	400 10337	PASSTHRU CONDENSOR RINSE TUBE ASSY	1
3	400 20210	PASSTHRU CONDENSOR UPPER SHROUD	1
4	600 30504	Axial Fan 160M^3/H	1
5	600 60520	1/2" Compression Union Elbow	1
6	3222	LITTLE GRIPPERS	1
7	400 20211	PASSTHRU CONDENSOR INNER UPPER AIR BAFFLE	1
8	400 20213	PASSTHRU CONDENSOR HOUSING FRONT COVER	1
9	400 20214	PASSTHRU CONDENSOR INNER COVER	1
12	600 60517	Elbow Connector 1/2" - 3/8"	2
15	600 90160	Condenser Coil M2C	1
18	600 60053	VACUUM BREAKER 1/2" GIADOS ASSY	2

400 10335 21/06/2017 REV 3-C

HOSING LAYOUT

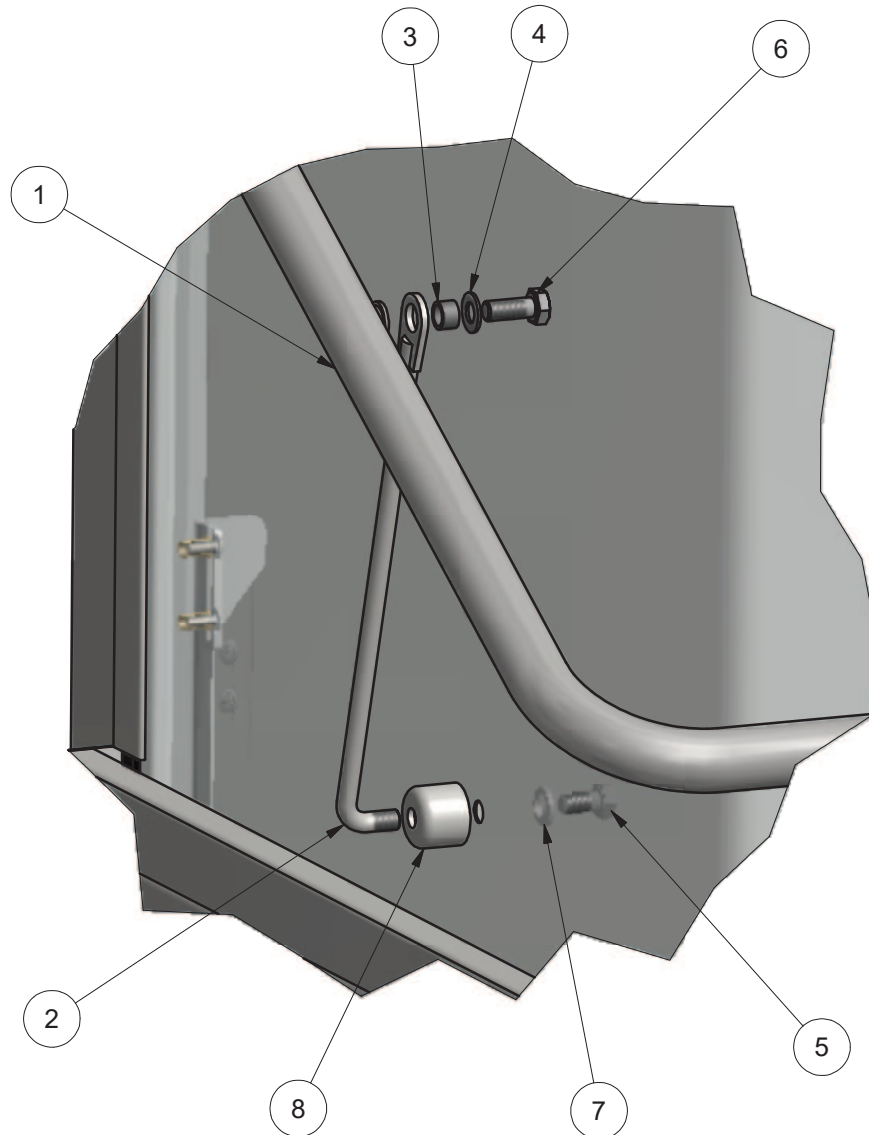
400 10335 21/06/2017 RE

Parts List		
ER	DESCRIPTION	QTY
	Bulkhead Fitting 3/8x3/8 Tube	2
	Elbow 3/8 x3/8 Stem	2
	Elbow Connector 1/2" - 3/8"	2

©Washtech Ltd, January 2021

M2(4) DOOR LINK ASSEMBLY

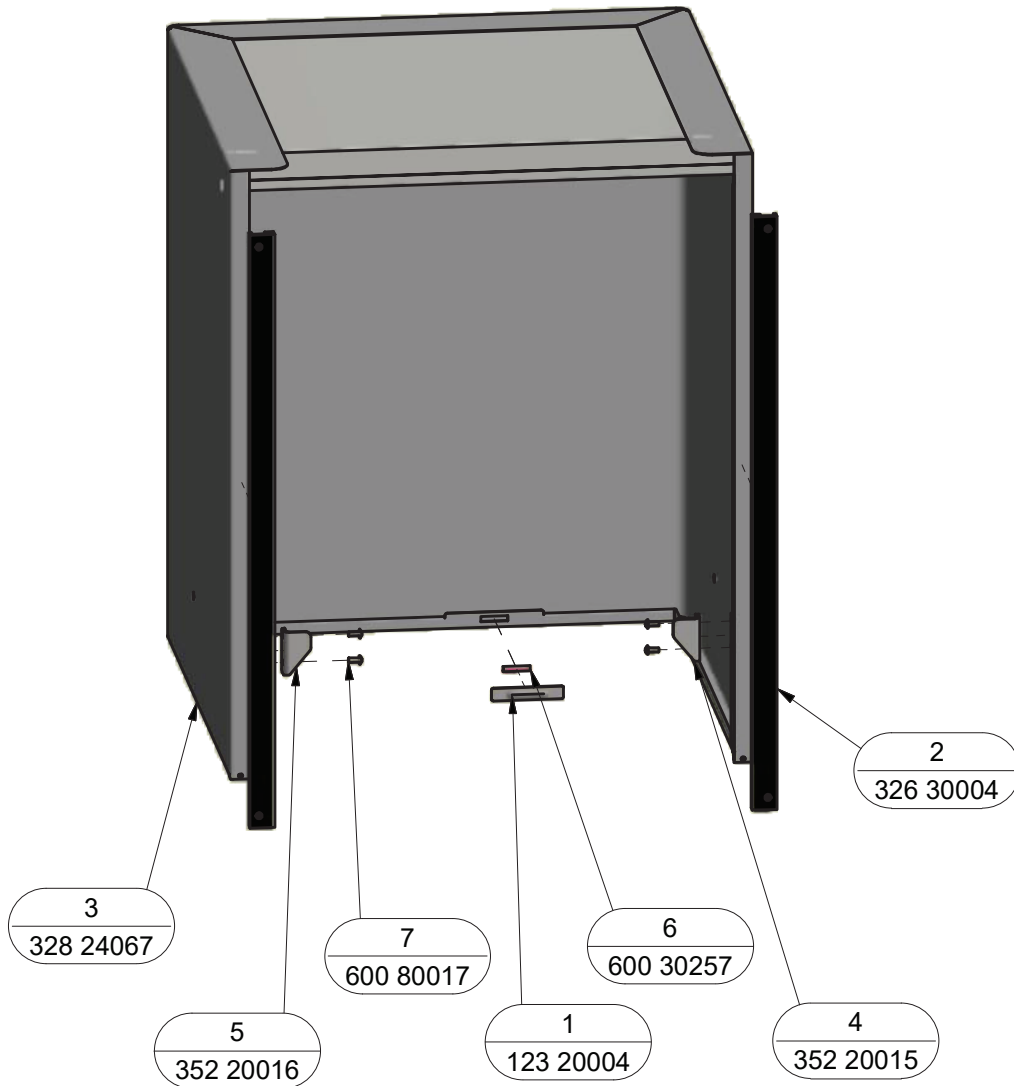
328 12001 30/06/2015 REV 1-A



Parts List			
ITEM	PART NUMBER	DESCRIPTION	QTY
1	328 10012	M2(4) ASSY DOOR HANDLE	1
2	400 10206	PASSTHROUGH DOOR STAY ASSY	2
3	1658	SPACER	2
4	600 80022	WASHER FL SS 304 M8x16x1.2mm	2
5	600 80029	M8x12 HEX HD SET SCREW T304	2
6	600 80030	M8x20 HEX HD SET SCREW T304	2
7	600 80158	8mm TYPE A SEALING WASHER	2
8	400 30225	PASSTHROUGH DOOR STAY MOUNT	1

M2C DOOR ASSY V2

328 14008 9/02/2017 REV 3-A

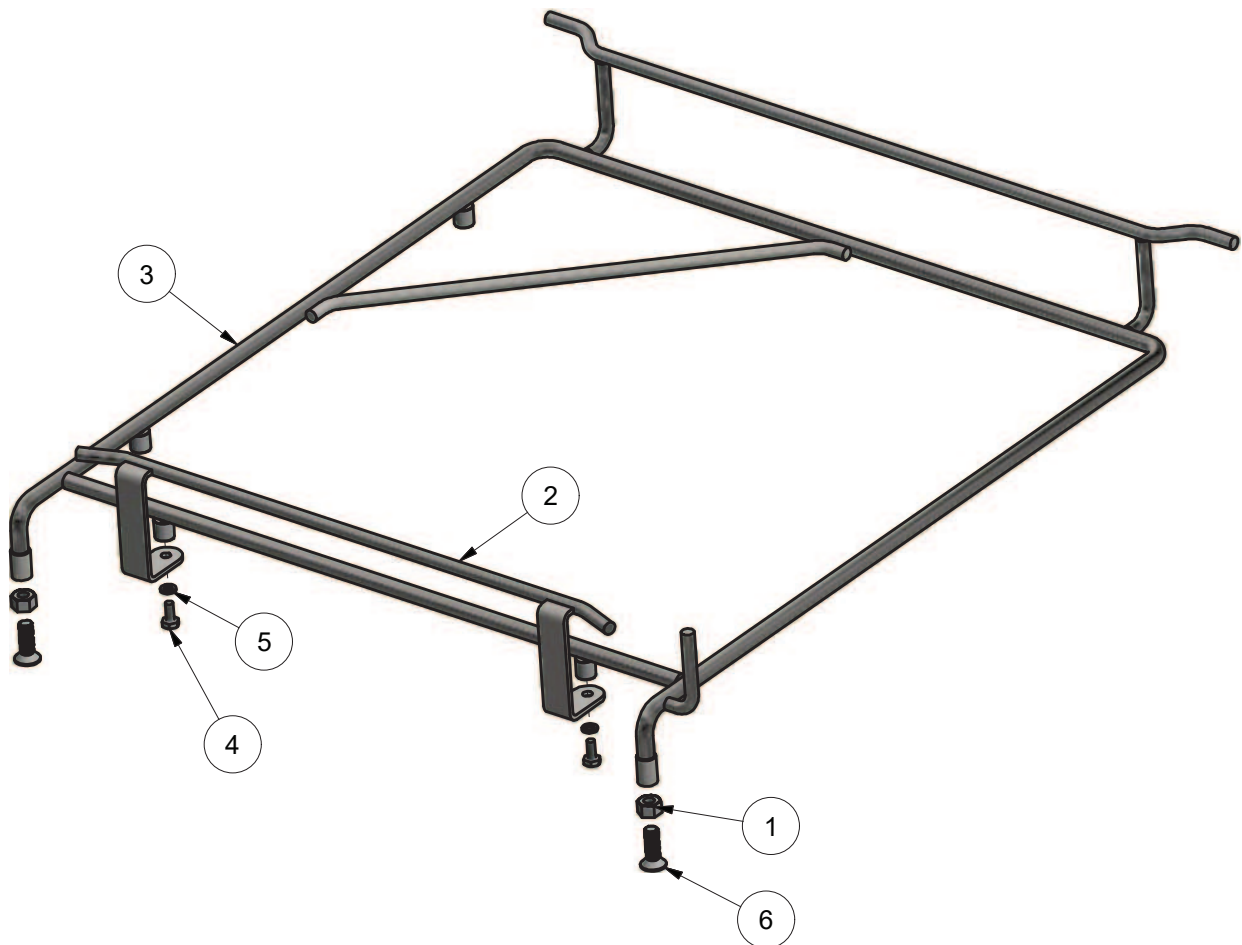


Parts List			
ITEM	PART NUMBER	DESCRIPTION	QTY
1	123 20004	DOOR MAGNET DIMPLE BRKT	1
2	326 30004	M2 DOOR SLIDE	2
3	328 24067	M2/M2C(4) DOOR WRAP	1
4	352 20015	M2/AL DOOR STOP LH	1
5	352 20016	M2/AL DOOR STOP RH	1
6	600 30257	DIA 6x30mm MAGNET	1
7	600 80017	M5 x 12 SS TRUSS HEAD SCREW	4

M2 RACKSLIDE ASSEMBLY

328 10026 28/11/2017 REV 3-C

EXPLODED VIEW

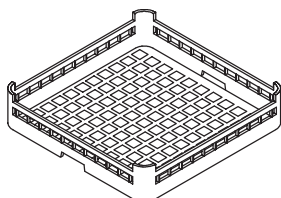


Parts List			
ITEM	PART NUMBER	DESCRIPTION	QTY
1	600 80063	NUT NYLOC SS M8	2
2	328 10008	RACK GUIDE ROD ASSEMBLY	1
3	328 10024	M2 RACKSLIDE SUB-ASSEMBLY	1
4	600 80135	M5 x 12 SS HEX HD SET SCREW	2
5	8567	WASHER SPRING SS 304 M5	2
6	600 80179	MS SOCKET HEAD SS T304 M8x25mm CSK	2

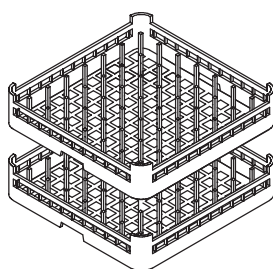
Accessories

M2(4) ACCESSORIES

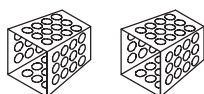
M2(4) ACS 14/01/16 1B



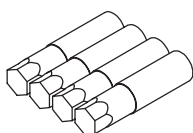
600 70029
CUPRACK 500mm OPEN



600 70028
DISHRACK 500mm 9 x 9 DIVISION



C660503
CUTLERY CONTAINER G

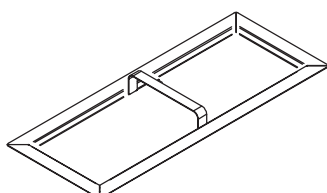


600 90154
SS LEG (63D x 225-325mm x M12)

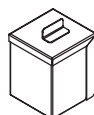


600 60080
2M S/S HOSE

OPTIONAL ACCESSORIES - NOT SUPPLIED WITH STANDARD MACHINE



328 10034
SCRAP TRAY FINE MESH



328 12019
WASH PUMP FINE MESH FILTER

Information supplied in this manual is copyright.
No part of this work may be reproduced or copied
in any form or by any means, electronic or
mechanical without the express permission of the
author/publisher

Distributed in Australia by Moffat Pty Limited



740 Springvale Road
Mulgrave 3170
Victoria
Australia



SPARES
WEBSTORE

spares.moffat.com.au



1300 263 107



sparesinfo@moffat.com.au

ISO9001

All Washtech products are designed and
manufactured by Washtech using the
internationally recognised ISO9001 quality
management system, covering design,
manufacture and final inspection, ensuring
consistent high quality at all times.

In line with policy to continually develop and
improve its products, Washtech Ltd reserves the
right to change specifications and design without
prior notice.

an Ali Group Company



The Spirit of Excellence