

XU

UNDERCOUNTER DISHWASHER



Parts Manual

Spare Parts

DESCRIPTION	PART NO
Cabinet & Door	
Control Panel Sub-Assembly	278 10042
Control Panel Label	400 70071
Door Assembly	269 10014
Door Catch Assembly	400 10104
Door Hinge Bush	11153
Door Hinge Pin	173 30002
Door Seal Foam Strip (600mm long)	600 90066
Door Seal Retainer Bracket	269 10044
Front Panel	269 20016
Rear Wiring Cover	269 20031

Controls & Indicators

Cord Set 15A	600 30255
Door Reed Switch	600 30183
Drain Switch	600 30213
Power Light	600 30161
Power Switch	600 30214
Pressure Switch 50/25mm	600 30266
Ready Light	600 30162
Relay	600 30080
Relay Base	600 30081
Run Light	600 30163
Start Button	600 30101
Temperature Gauge	600 90080
Test Switch	3035
Timer	32661 001

Heating Components

Over Temperature Thermostat	600 30088
Rinse Element 3 KW	600 30249
Rinse Tank Assembly	400 10129
Rinse Thermostat	3020
Wash Element	600 30160
Wash Thermostat	30201

Spare Parts

DESCRIPTION	PART NO
Hoses & Fittings	
Hose Clamp 6 mm	ASS 06
Hose Clamp 16 mm	ASS 16
Hose Clamp 28 mm	ASS 28
Lower Wash Hose (70 mm long)	6196
Pressure Switch Hose (specify length)	3067
Rinse Hose (specify length)	600 60073
Rinse Tee	400 90076
Upper Wash Hose	400 90012
Wash Pump Inlet Hose	1262
Wash Pump Outlet Hose (90 mm long)	6195

Pumps & Solenoids

Dual Check Valve	600 60108
Solenoid Valve	3342
Wash Pump FIR	3888
Wash Pump ZF 270 SX	600 30298

Wash Tank Components

Drain Upstand	400 90119
Pressure Bell	400 90135
Rinse Jet	400 30087
Slip Ring Black Acetal	400 30190
Wash Arm End O-Ring	ARP018
Wash Arm End Plug	400 30037
Wash Pump Inlet Filter	280 10021
Wash/Rinse Arm	269 10137
Wash/Rinse Arm Bush	C190624
Wash/Rinse Arm O-Ring	ARP 333
Wash/Rinse Arm Spindle	400 30073

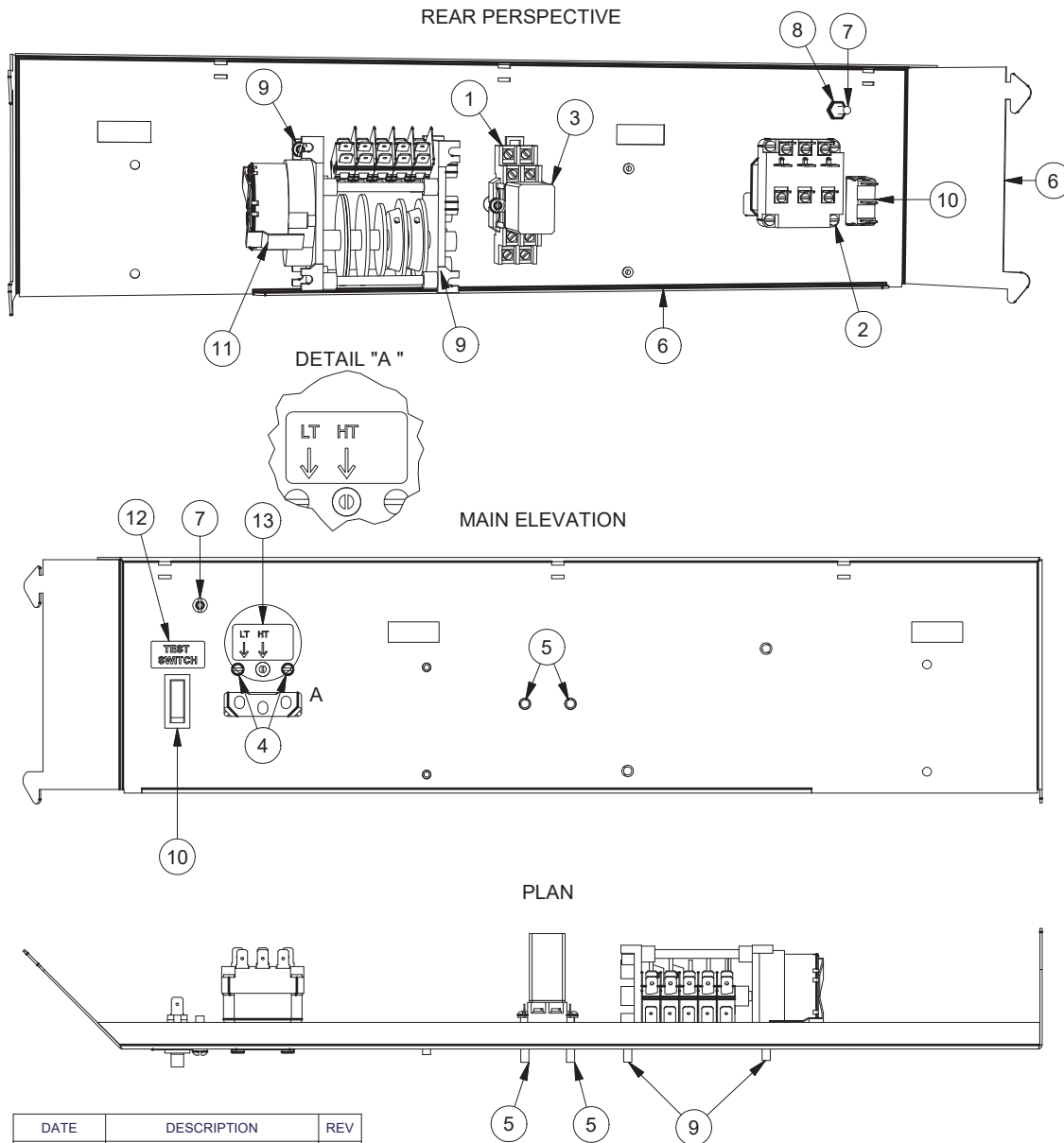
Note:

For more parts look in the section “Assembly Diagrams”.

Assembly Diagrams

XU/UE5(W) WIRING TRAY ASSEMBLY

269 11020 30/01/2009 REV 3-A



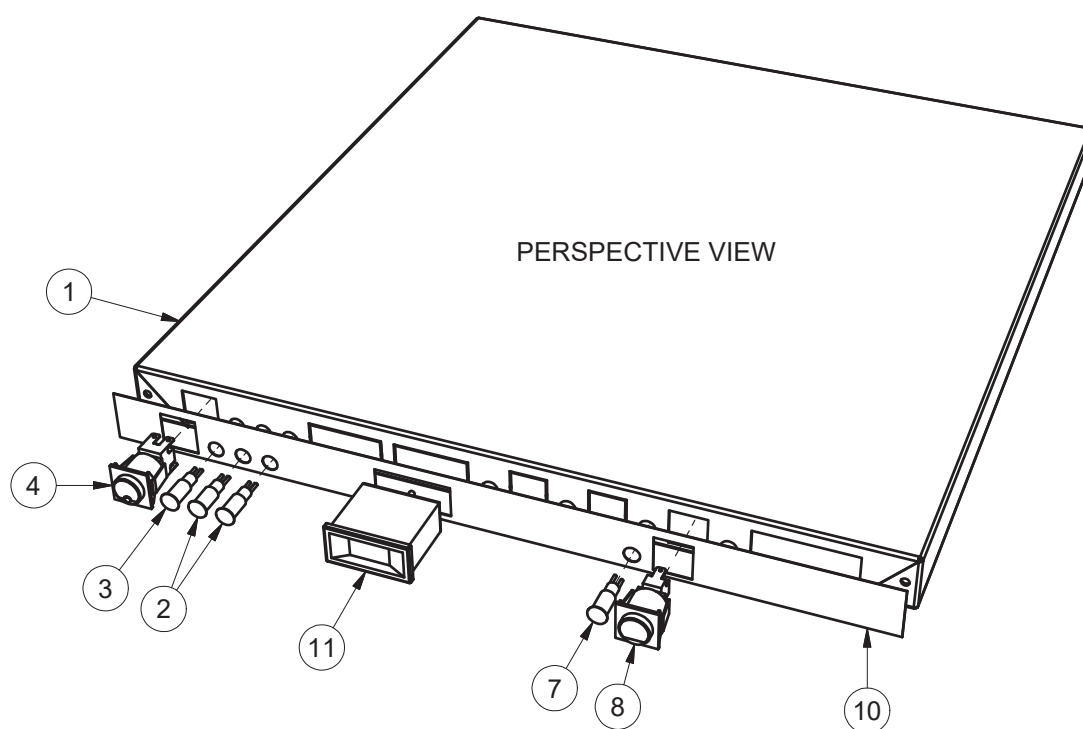
DATE	DESCRIPTION	REV
6/07/2006	PILOT RUN	2-A
26/07/2006	PRODUCTION RUN	3-A

Parts List			
ITEM	PART NUMBER	DESCRIPTION	QTY
1	600 30081	BASE 2 POLE RELAY	1
2	3020	3 POLE THERMOSTAT	1
3	600 30080	RELAY 2 POLE (240VAC)	1
4	8800	MS PAN POZI ZP M4x6	2
5	8802	MS PAN POZI ZP M4x25	2
6	269 11005	UE5(W) WIRING TRAY SUB-ASSY	1

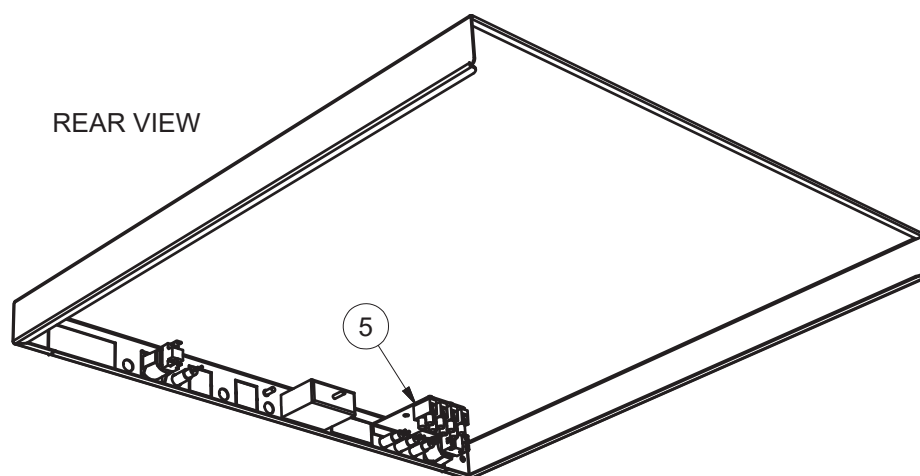
Parts List			
ITEM	PART NUMBER	DESCRIPTION	QTY
7	8816	MS RH BRASS 3/16 X 3/4	1
8	8151	NUT HX BRASS 3/16" PRESSED	1
9	8801	MS PAN POZI ZP M4x12	2
10	3035	SWITCH SINGLE POLE BIASED BLACK	1
11	32661 001	TIMER 120sec 5 CAM	1
12	REF	LABEL TEST SWITCH	1
13	REF	LABEL THERMOSTAT ADJUSTMENTS	1

XU/UE(5) WASHTECH CONTROL PANEL ASSY

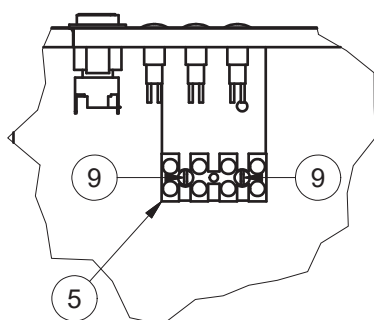
269 11043 22/10/2008 REV 3-C



REAR VIEW



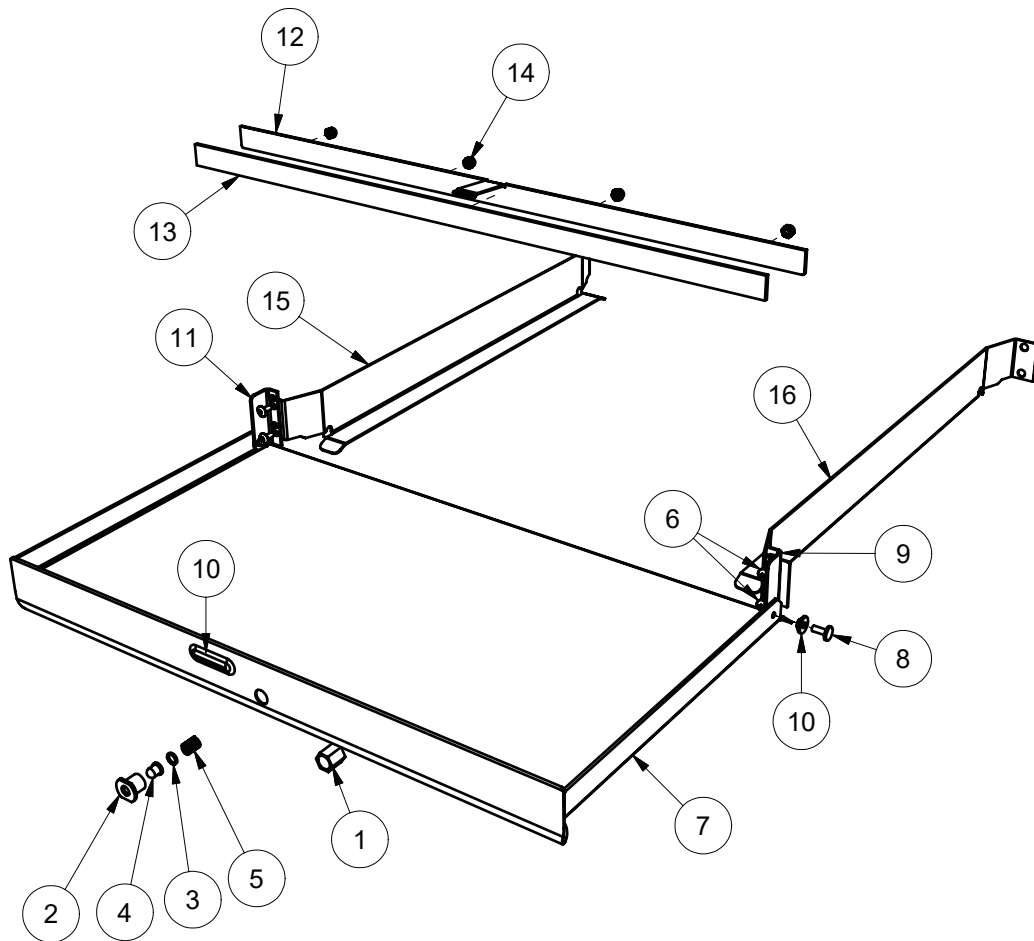
DETAIL



Parts List			
ITEM	PART NUMBER	DESCRIPTION	QTY
1	278 10042	UD5 WASHTECH CONTROL PANEL SUB ASSY	1
2	600 30162	LENS & NEON ASSY (AMBER) 12mm	2
3	600 30161	LENS & NEON ASSY (RED) 12mm	1
4	600 30214	SWITCH POWER 2P NO/NO LATCHED	1
5	32271	TERMINAL STRIP 4 WAY	1
7	600 30163	LENS & NEON ASSY (GREEN) 12mm	1
8	600 30101	SWITCH START ROLD-SP MOMENTARY	1
9	8802	MS PAN POZI ZP M4x25	2
10	400 70071	UE5 CONTROL PANEL LABEL	1
11	600 90080	TEMP GAUGE RECTANGULAR 58x25	1

UE(5) DOOR & RACK ASSEMBLY

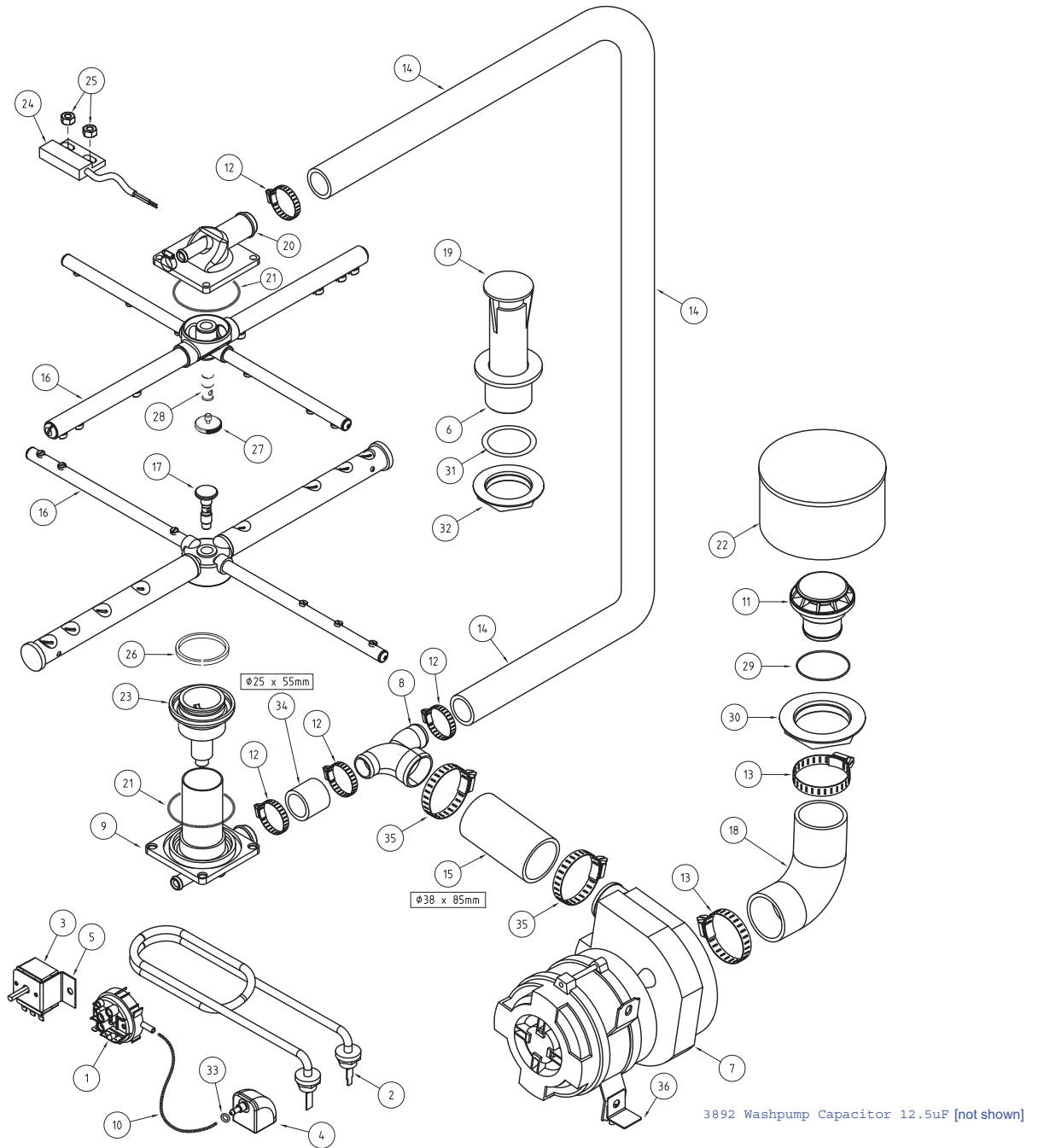
269 10001 26/07/2006 REV 3-A



Parts List			
ITEM	PART NUMBER	DESCRIPTION	QTY
1	400 30031	DOOR CATCH CAP NUT	1
2	400 30030	DOOR CATCH FACE BOLT	1
3	400 30033	DOOR CATCH SPACER FOR PLUNGER	1
4	40030032	DOOR CATCH PLUNGER	1
5	400 90024	DOOR CATCH COIL SPRING S/S	1
6	600 80017	M5 x 12 SS TRUSS HEAD SCREW	4
7	269 10014	UE(5) DOOR ASSEMBLY	1
8	173 30002	HINGE PIN G DOOR	2
9	173 20008	BRKT GM5 RIGHT DOOR HINGE	1
10	11153	BUSH DOOR HINGE BRACKET	2
11	173 20009	BRKT GM5 LEFT DOOR HINGE	1
12	269 10044	UE(5) DOOR SEAL RETAINER BRKT ASSY	1
13	600 90066	20 x 3mm ADHESIVE FOAM STRIP	1
14	600 80060	NUT NYLOC M5 S/S	4
15	269 10045	UD5/UE5 RACKSLIDE ASSY (LH)	1
16	269 10046	UD5/UE5 RACKSLIDE ASSY (RH)	1

XU / UE5 WASH ASSY

UE5 0007 1-06-10 3 F



ITEM	CODE	DESCRIPTION	QTY
1	600 30266	PRESSURE SWITCH 50/25	1
2	600 30160	ELEMENT 2500W BENT ELEMENT	1
3	30201	THERMOSTAT 1 POLE	1
4	400 90135	SQUARE PRESSURE BELL CASTING	1
5	190 20082	GL THERMOSTAT BRKT	1
6	400 30042	WASTE DRAIN PLASTIC 40mm PLASTIC	1
7	600 30298	PUMP WASH 0.5HP ZF270SX	1
8	400 90069	38mm x 25mm CASR SS REDUCING TEE	1
9	269 10050	UE(5)/M(3) LOWER WASH TEE SUB ASSY	1
10	3067	HOSE PRESSURE SW VACUUM 4mm	100mm
11	400 90133	Ø44mm UE5 PUMP INLET VORTEX BREAKER	1
12	ASS16	HOSECLIP ASS16	4
13	ASS28	HOSECLIP ASS28	2
14	400 90012	UD4 UPPER WASH HOSE	1
15	6195	HOSE 38mm 2 PLY RADIATOR	1
16	269 10137	ASSY UE5 WASH/RINSE ARM	2
17	400 30073	M2 RINSE SPINDLE	1
18	1262	HOSE WASH PUMP INLET UHB44	1

ITEM	CODE	DESCRIPTION	QTY
19	400 90119	GM5 UPSTAND 132mm LONG	1
20	400 90077	GLV/UD/UDC WASH TEE	1
21	ARP333	ARP333 O-RING	2
22	280 10021	WASH INLET FILTER	1
23	269 10139	UE(5) LOWER WASH COLLAR ASSY	1
24	600 30183	REED SWITCH STEM	1
25	600 80079	M4 S/S NYLOC NUT	2
26	400 30190	SLIP RING BLACK ACETAL	1
27	261004C	CAPSCREW M2/AL/GA	1
28	400 30007	SPINDLE G TYPE AL RINSE	1
29	ARP228	O-RING ARP228	1
30	400 90115	CASTING 1 3/4" SS BACKNUT	1
31	1896	GASKET FOR 40MM DRAIN WASTE	1
32	6037	BACKNUT 126 X 40MM	1
33	ARP205	O-RING ARP205 N70	1
34	6196	HOSE 24mm 2 PLY RADIATOR	1
35	ASS24	HOSE CLAMP ASS24	2
36	273 20013	BRACKET UE3 PUMP MOUNT	1

Wash Pump

Part Number

3888

Function

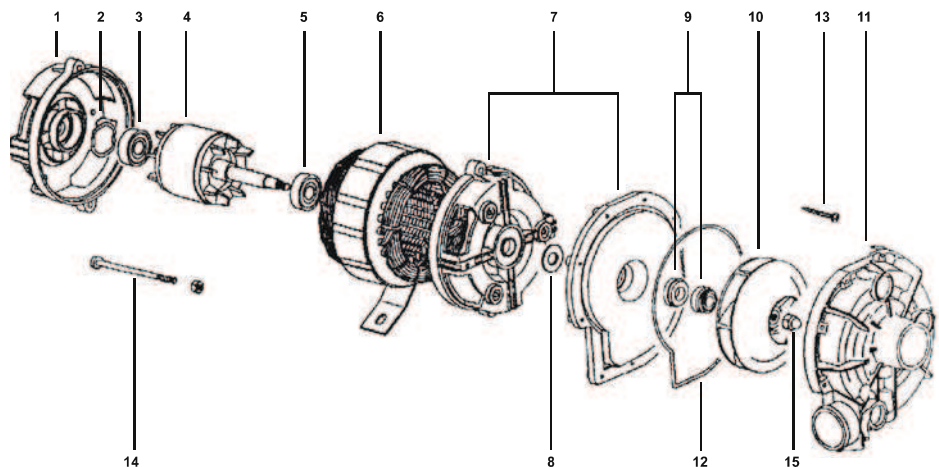
Pumps water from the wash tank to the wash arms providing a recirculating wash cycle.

Description

Electric Pump FIR

Power:	HP 0.5 Kw 0.37	Speed:	2800 rpm
Voltage:	220 V	Amperes:	2.6 A
Frequency:	50 Hz	Capacitor:	12.5 uF/400 V

Diagram



ITEM	DESCRIPTION	PART NO:	ITEM	DESCRIPTION	PART NO:
1	Housing		9	Seal	C630510
2	Compensation Ring		10	Impeller	38882
3	Ball Bearing	6201	11	Volute	38884
4	Rotor		12	Gasket	38886
5	Ball Bearing	6201	13	Pump Housing Screw	
6	Stator		14	Tie Rod	
7	Pump Support	38885	15	Impeller Nut	
8	Water Protect.Ring				

Replacement

Drain the wash tank and switch off the power.

Disconnect the wires from the pump connectors and the pump capacitor.

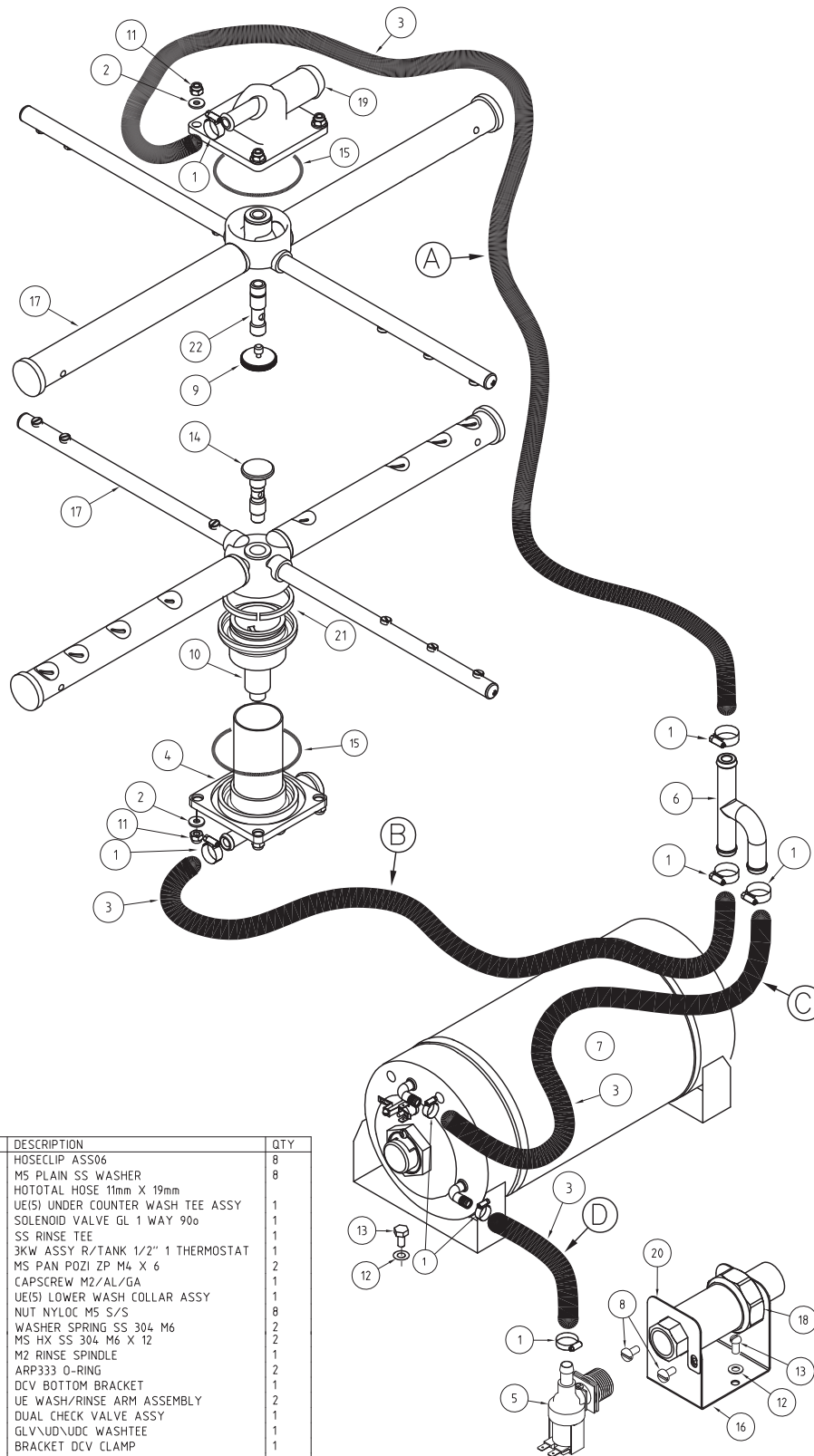
Remove M6 bolt that fastens the pump to the floor of the machine.

Release the hose clamps on the inlet and outlet pump hoses and remove the pump.

Replace in reverse order.

WASHTECH XU / UE5 RINSE ASSY.

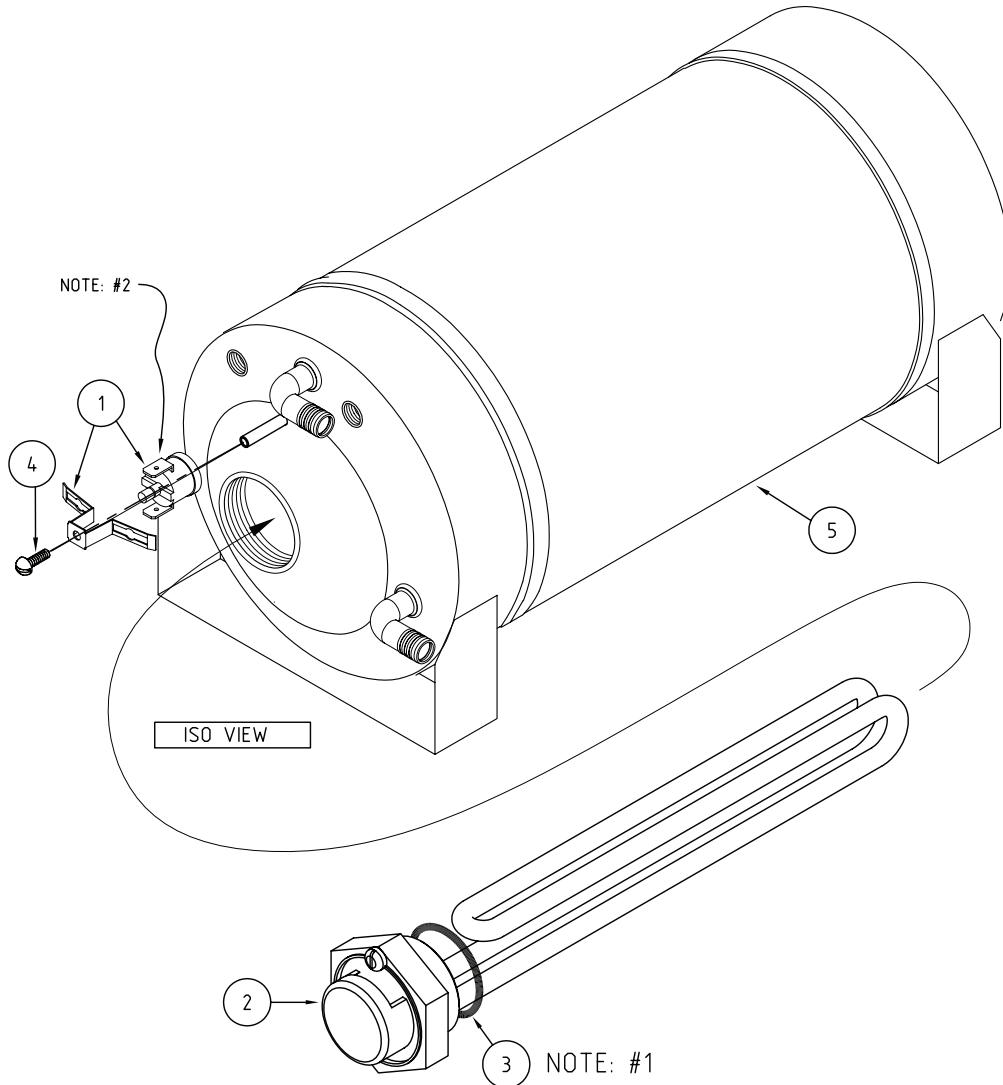
UE5 0002 02-04-07 3D



ITEM	CODE	DESCRIPTION	QTY
1	ASS06	HOSECLIP ASS06	8
2	85651	M5 PLAIN SS WASHER	8
3	600 60073	HOTOTAL HOSE 11mm X 19mm	1
4	269 10050	UE(S) UNDER COUNTER WASH TEE ASSY	1
5	3342	SOLENOID VALVE GL 1 WAY 90o	1
6	400 90076	SS RINSE TEE	1
7	400 10129	3KW ASSY R/TANK 1/2" 1 THERMOSTAT	1
8	8800	MS PAN POZI ZP M4 X 6	2
9	261004C	CAPSCREW M2/AL/GA	1
10	269 10139	UE(S) LOWER WASH COLLAR ASSY	1
11	600 80060	NUT NYLOC M5 S/S	8
12	8566	WASHER SPRING SS 304 M6	2
13	88461	MS HX SS 304 M6 X 12	2
14	400 30073	M2 RINSE SPINDLE	1
15	ARP333	ARP333 O-RING	2
16	400 20107	DCV BOTTOM BRACKET	1
17	269 10137	UE WASH/RINSE ARM ASSEMBLY	2
18	400 10132	DUAL CHECK VALVE ASSY	1
19	400 90077	GLV\UD\UDC WASHTEE	1
20	400 20108	BRACKET DCV CLAMP	1
21	400 30190	SLIP RING BLACK ACETAL	1
22	400 30007	SPINDLE G TYPE AL RINSE	1

3KW ASSY R/TANK 1/2" 1 THERMOSTAT

400 10129 30-10-06 3 A



ITEM	CODE	DESCRIPTION	QTY
1	600 30088	THERMOSTAT TY60/R-95C [with E bracket]	1
2	600 30249	ELEMENT 3kW RINSE	1
3	3006	GASKET ELEMENT 54.0:1.6mm	1
4	600 80052	MS PAN SLOT ZP M3X6.	1
5	400 10114	RINSE TANK NEW SUB ASSY 1/2"	1

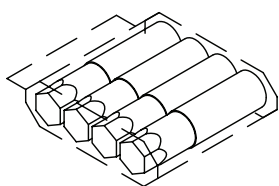
NOTE: 1. USE GRAPHITE JOINING COMPOUND ON BOTH SIDES OF GASKET BEFORE INSERTING ONTO ELEMENT.

NOTE: 2. USE HEAT TRANSFER COMPOUND UNDER THERMOSTAT HEAD.

Accessories

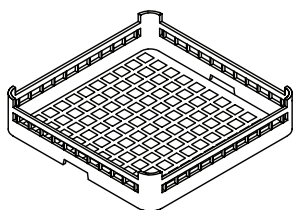
WASHTECH UE5 ACCESSORIES

UE5 ACW 12-07-06 1A

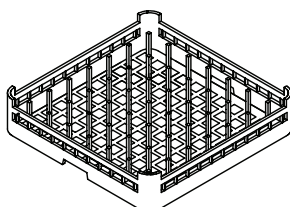


7026@
BAG MINIGRIP 230 x 305 x 70mu

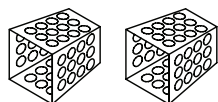
600 90021
ASSY GA/GM LEG INOX 40x180xM10



600 70029
CUPRACK CB 500mm X 75mm high



600 70028
DISHRACK P12/18 500mm 18 DISH



C660503
CUTLERY CONTAINER G

Information supplied in this manual is copyright. No part of this work may be reproduced or copied in any form or by any means, electronic or mechanical without the express permission of the author / publisher.



Distributed In
Australia by

740 Springvale Road, Mulgrave 3170, Victoria



©Washtech Ltd, January 2021



SPARES
WEBSTORE

spares.moffat.com.au



1300 263 107



sparesinfo@moffat.com.au