

XU

Series 2

UNDERCOUNTER DISHWASHER



Parts Manual

Spare Parts XU

DESCRIPTION	PART NO	REC. STOCK
Cabinet & Door		
Control Panel Label	207 70001	
Door Assembly	207 10015	
Door Catch Plunger Assembly	400 10104	
Door Seal Gasket (540mm)	600 90064	1
Front Panel	207 20016	
Hinge Guide	400 90113	
Rear Safety Panel	207 20021	
Rear Wheel Assembly	400 10219	1
Controls & Indicators		
Cord Set 15A	600 30452	
Door Reed Switch	600 30183	1
Drain Switch	600 30213	1
Power Light	600 30161	1
Power Switch	600 30214	1
Pressure Switch 50/20mm	600 30478	1
Ready Light	600 30162	1
Relay	600 30080	1
Relay Base	600 30081	1
Run Light	600 30163	1
Start Button	600 30101	1
Temperature Gauge	600 90080	
Timer	32661 001	1
Heating Components		
Over Temperature Thermostat	600 30088	
Rinse Element 3 kW (From s/n 144621)	600 30495	1
Rinse Element 3 kW (Prior to s/n 144621)	600 30249	1
Wash Element 2.5KW	600 30226	1
Hoses & Fittings		
Hose Clamp 6 mm	ASS 06	
Hose Clamp 16 mm	ASS 16	
Hose Drain Pump 2.5m	600 60105	1
Hose Drain Pump Inlet	6196	0.2m
Pressure Switch Hose	3067	1m
Rinse Hose (specify length)	600 60073	
Wash Pump Inlet Hose	1262	
Wash Pump Outlet Hose	6195	0.1m
Lower Wash Connection Hose	6196	
Upper Wash Hose	400 90012	

Spare Parts XU(S)

DESCRIPTION	PART NO	REC. STOCK
Pumps & Solenoids		
Detergent Pump	600 30094	1
Detergent Pump Hose	600 30148	1
Detergent Squeeze Tube	600 30134	2
Drain Pump	600 60102	1
Rinse Aid Injector	600 30324	
Solenoid Valve	3342	1
Wash Pump	3888	1
Wash Tank Components		
Drain Upstand	207 10008	1
Pressure Bell O Ring	ARP 205	
Rinse Nozzle Closed Head	600 40050	
Rinse Nozzle Opened Head	600 40049	2
Rinse Nozzle O-Ring (OR R6 NBR)	600 40051	1
Scrap Tray	207 10044	
Wash Nozzle Opened head	600 40015	2
Wash Nozzle O-Ring (OR 2050 NBR)	600 40048	1
Wash /Drain Pump Filter Assembly	207 10004	
Wash / Rinse Arm Assembly	600 41148	
Wash / Rinse Arm Bush	600 41202	2
Wash / Rinse Spindle	400 30223	

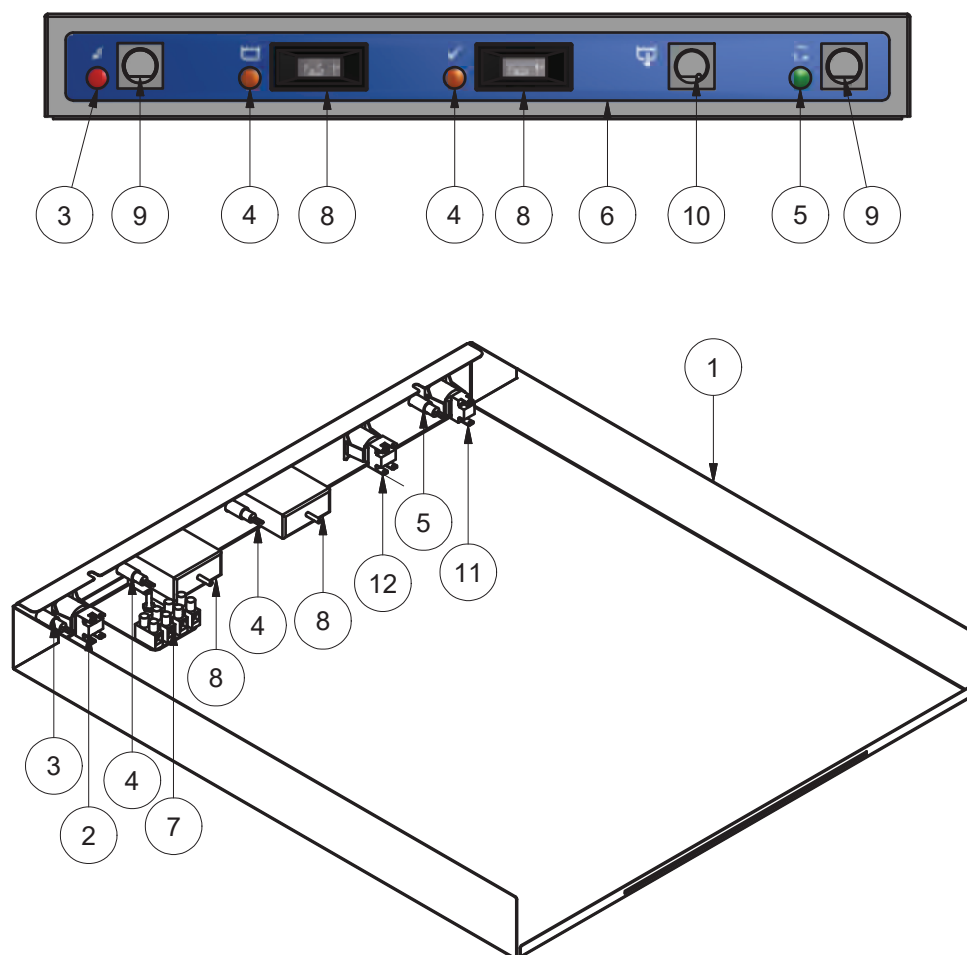
Note:

For more parts look in the section “Assembly Diagrams”

Assembly Diagrams

XU CONTROL PANEL ASSEMBLY

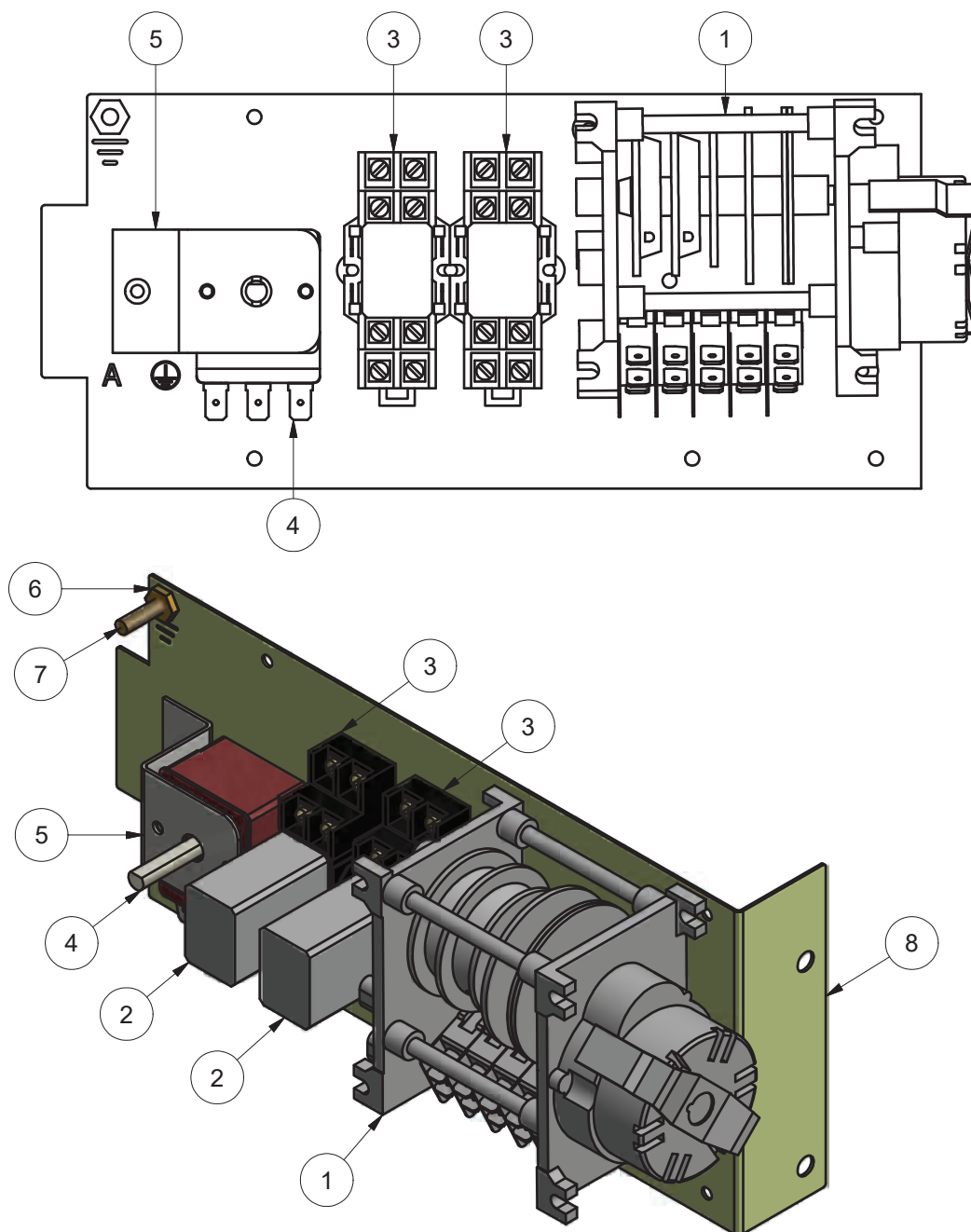
207 12043 19/07/2013 REV 3-A



Parts List			
ITEM	PART NUMBER	DESCRIPTION	QTY
1	207 12018	XU CONTROL PANEL SUB-ASSEMBLY	1
2	600 30214	SWITCH POWER 2P NO/NO LATCHED	1
3	600 30161	LENS & NEON ASSY (RED) 12mm	1
4	600 30162	LENS & NEON ASSY (AMBER) 12mm	2
5	600 30163	LENS & NEON ASSY (GREEN) 12mm	1
6	207 70001	LABEL XU CONTROL PANEL	1
7	32271	TERMINAL STRIP 4 WAY	1
8	600 90080	TEMP GAUGE RECTANGULAR 58x25	2
9	600 30464	ROUND GREY BUTTON	2
10	600 30463	ROUND GREY BUTTON WITH WINDOW	1
11	600 30101	SWITCH START ROLD-SP MOMENTARY	1
12	600 30213	SWITCH DRAIN 2P NO/NC	1

XU WIRING TRAY ASSEMBLY

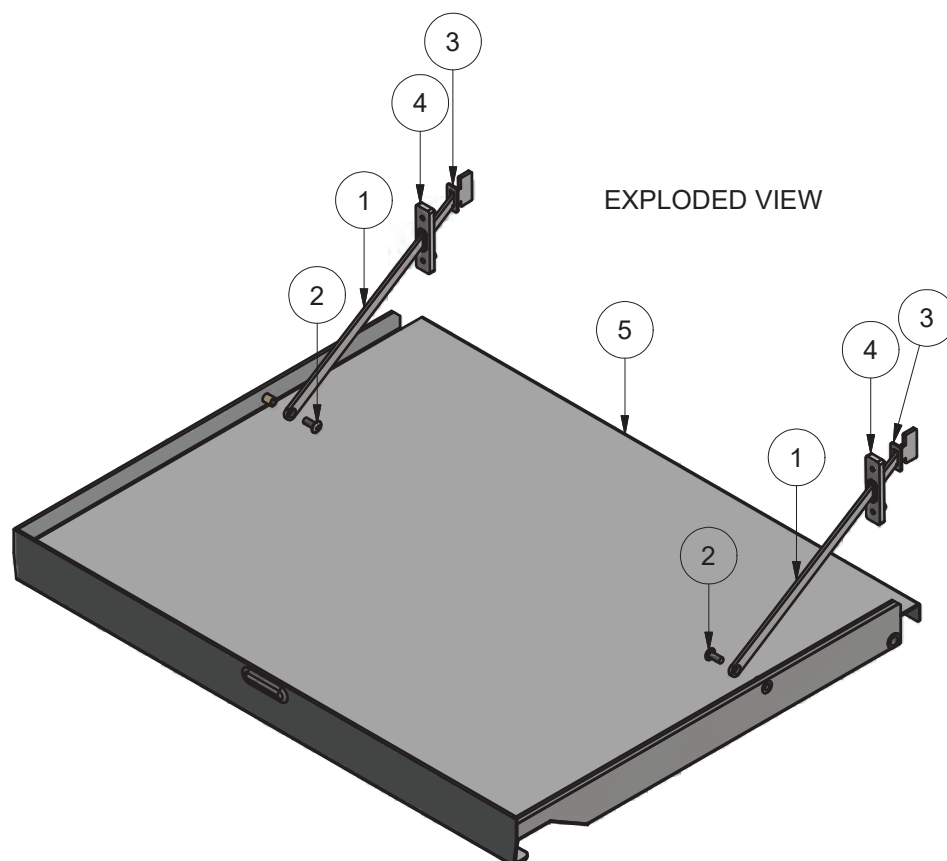
207 10017 16/07/2013 REV 3-A



Parts List			
ITEM	PART NUMBER	DESCRIPTION	QTY
1	32661 001	TIMER 120sec 5 CAM	1
2	600 30080	RELAY 2 POLE (240VAC)	2
3	600 30081	BASE 2 POLE RELAY	2
4	30201	THERMOSTAT 1 POLE	1
5	190 20082	GL THERMOSTAT BRKT	1
6	8151	NUT HX BRASS 3/16" PRESSED	1
7	8816	MS RH BRASS 3/16 X 3/4	1
8	207 10010	XU WIRING TRAY SUB ASSEMBLY	1

EU/ XU/ UD7 DOOR & STAYS ASSEMBLY

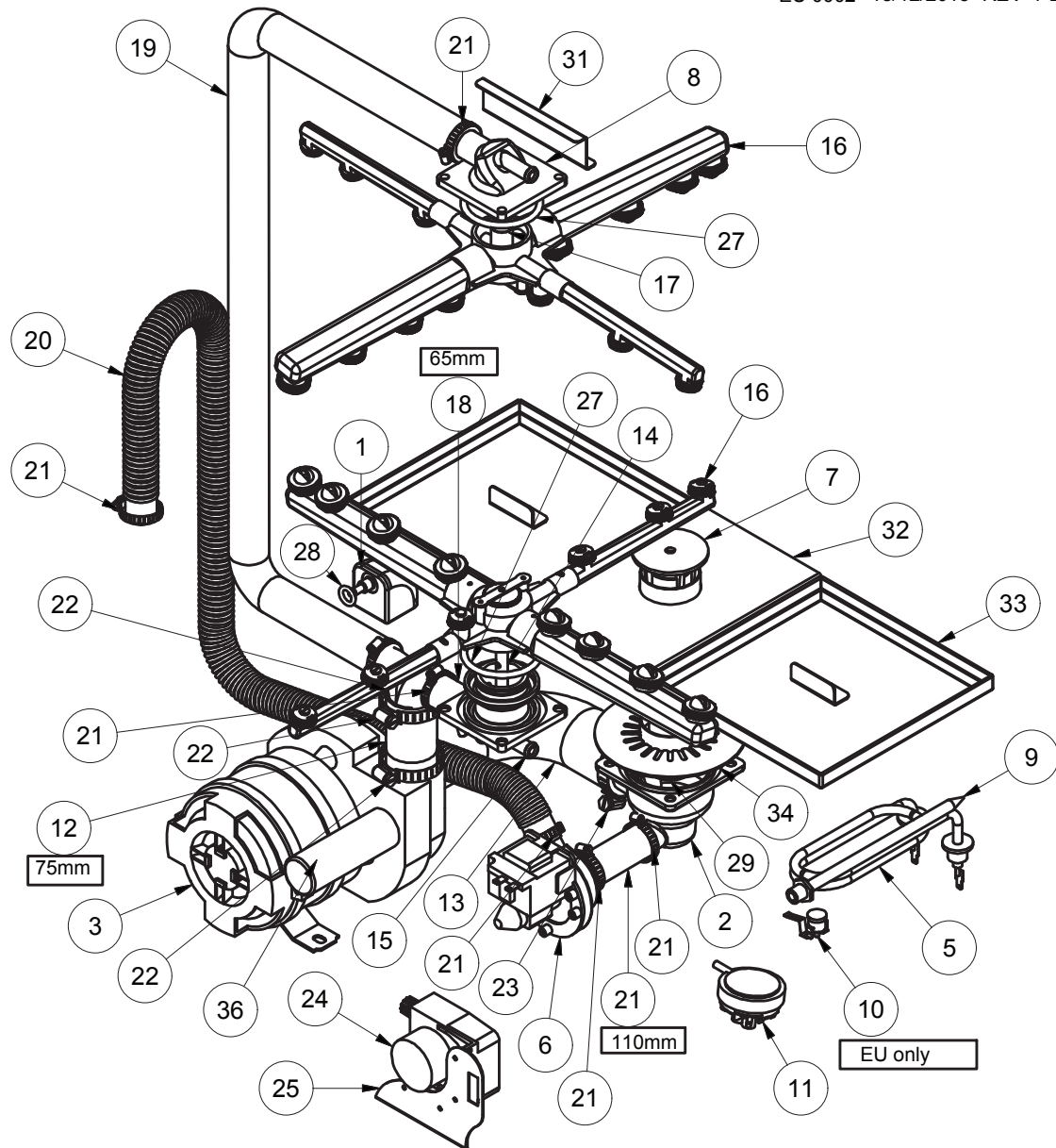
207 10020 23/09/2013 REV 3-A



Parts List			
ITEM	PART NUMBER	DESCRIPTION	QTY
1	207 20054	XU DOOR STAY	2
2	600 80017	M5 x 12 SS TRUSS HEAD SCREW	2
3	278 20066	GLV5\UD5\GL5 DOOR STOP BRKT	2
4	400 90113	HINGE GUIDE	2
5	207 10015	EU/ XU/ UD7 DOOR ASSEMBLY	1

EU WASH SYSTEM

EU 0002 18/12/2013 REV 1-B



Parts List				Parts List			
ITEM	PART NO	DESCRIPTION	QTY	ITEM	PART NO	DESCRIPTION	QTY
1	400 90135	SQUARE PRESSURE BELL	1	18	6196	HOSE 25mm 2 PLY	1
2	400 90130	DRAIN & WASH INLET HUB	1	19	400 90012	HOSE UPPER WASH	1
3	3888	PUMP WASH FIR 0.5HP	1	20	600 60105	HOSE DRAIN PUMP 2.5M	1
4	400 90069	38 x 25mm REDUCER TEE	1	21	ASS16	HOSE CLAMP	8
5	600 30226	ELEMENT 2500W 240V	1	22	ASS24	HOSE CLAMP ASS24	2
6	600 60102	DRAIN PUMP B20-6	1	23	ASS28	HOSE CLAMP ASS28	2
7	207 10008	212mm UPSTAND 'F' w holes	1	24	600 30094	PERI PUMP 1.5L/H SEKO	1
8	400 90077	GLVUD/UDC WASH TEE	1	25	400 20050	BRACKET SEKO PUMP	1
9	400 10065	ASSY LONG POCKET	1	26	3067	HOSE PRESSURE SWITCH	530mm
10	600 30088	TSTAT TY60/R-110C & BKT	1	27	ARP333	O-RING ARP333	2
11	600 30266	PRESSURE SWITCH 50/25	1	28	ARP205	O-RING 11IDx18OD	1
12	6195	HOSE 38mm 2 PLY	1	29	ARP38x2	O-RING ARP38x2 N70	1
13	1262	UHB44 W/PUMP IN HOSE	1	30	@3888	CAPACITOR 12.5MF/400V	1
14	400 10036	XP/XU WASH HUB ASSY	1	31	212 20024	UL TOP PANEL SUPPORT	1
15	400 30194	UE5/M1 LOWER WASH TEE	1	32	207 10009	XU UPSTAND TRAY ASSEMBLY	1
16	600 41148	WASH/RINSE ARM ASSEMBLY	2	33	207 10041	EU SCRAP TRAY ASSEMBLY	2
17	400 30223	WASH/RINSE SPINDLE	1	34	207 10040	XU WASH/DRAIN FILTER ASSY	1

Wash Pump

Part Number

3888

Function

Pumps water from the wash tank to the wash arms providing a recirculating wash cycle.

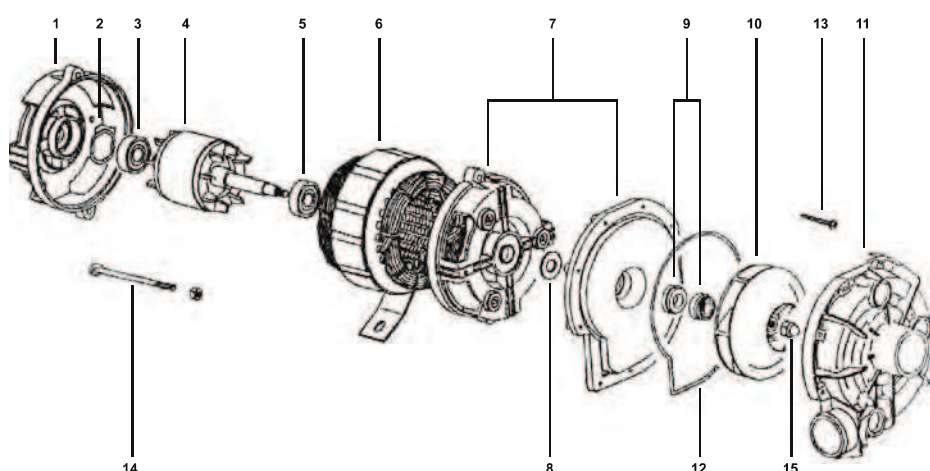
Description

Electric Pump FIR

Power: HP 0.5 Kw 0.37
Voltage: 240 V
Frequency: 50 Hz

Speed: 2800 rpm
Amperes: 2.6 A
Capacitor: 12.5 uF/400 V

Diagram



ITEM	DESCRIPTION	PART NO:	ITEM	DESCRIPTION	PART NO:
1	Housing		9	Seal	C630510
2	Compensation Ring		10	Impeller	38882
3	Ball Bearing	6201	11	Volute	38884
4	Rotor		12	Gasket	38886
5	Ball Bearing	6201	13	Pump Housing Screw	
6	Stator		14	Tie Rod	
7	Pump Support	38885	15	Impeller Nut	
8	Water Protect. Ring				

Replacement

Drain the wash tank and switch off the power.

Disconnect the wires from the pump connectors and the pump capacitor.

Remove M6 bolt that fastens the pump to the floor of the machine.

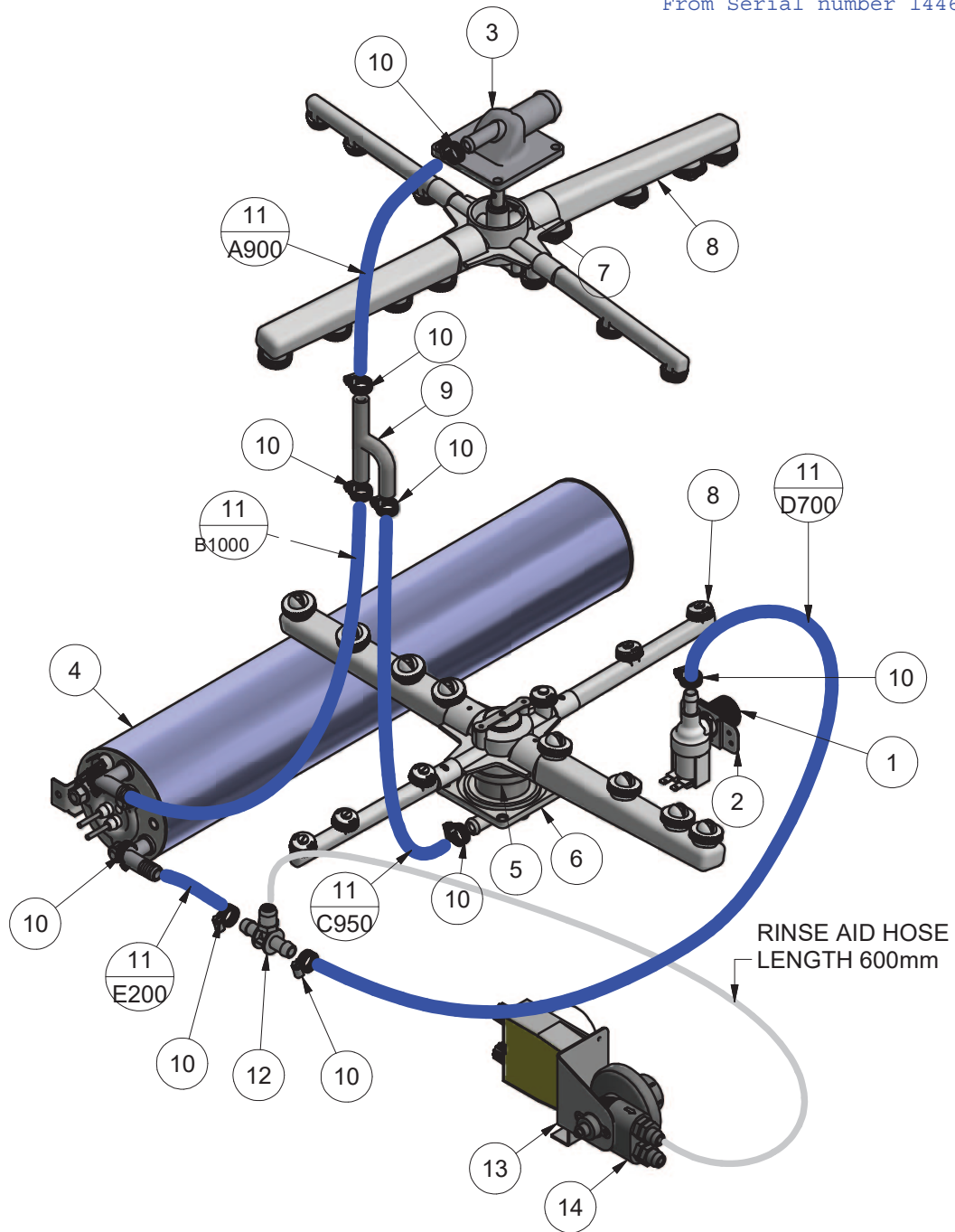
Release the hose clamps on the inlet and outlet pump hoses and remove the pump.

Replace in reverse order.

XU(W) RINSE SYSTEM

XU 0004 11/04/2016 REV 3-C

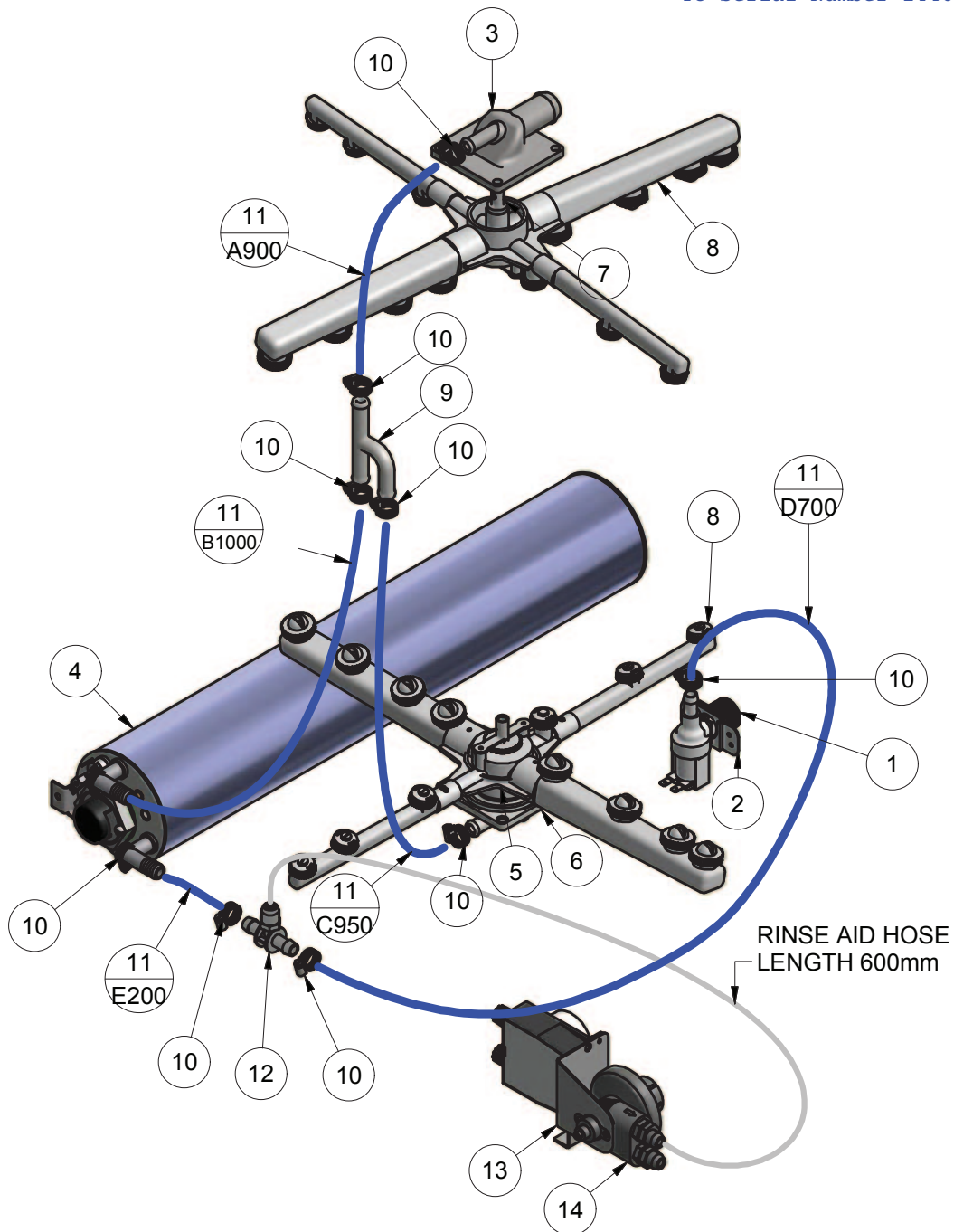
From Serial number 144621



Parts List				Parts List			
ITEM	PART NUMBER	DESCRIPTION	QTY	ITEM	PART NUMBER	DESCRIPTION	QTY
1	3342	SOLENOID VALVE 1 WAY	1	8	600 41148	WASH/RINSE ARM	2
2	1247	INLET SOLENOID SUPPORT	1	9	600 60230	HOSE TEE SS 12 X 12 X 12MM	1
3	400 90077	GLVUD/UDC WASH TEE	1	10	ASS05	HOSE CLAMP	10
4	400 10243	XU2/UD7 RINSE TANK 550MM ASSY V2	1	11	600 60073	HOSE HOTOTAL 11x 19 MM	4
5	400 10036	XP/XU WASH HUB ASSEMBLY	1	12	@600 30324	DETERGENT/RINSE AID TEE	1
6	400 30194	UE(5)/M1(3) LOWER WASH TEE	1	13	400 20180	CHEMICAL PUMPS BRACKET	1
7	400 30223	WASH/RINSE SPINDLE	1	14	600 30324	RINSE AID INJECTOR	1

XU(W) RINSE SYSTEM

XU 0004 7/11/2014 REV 3-B
To Serial Number 144620

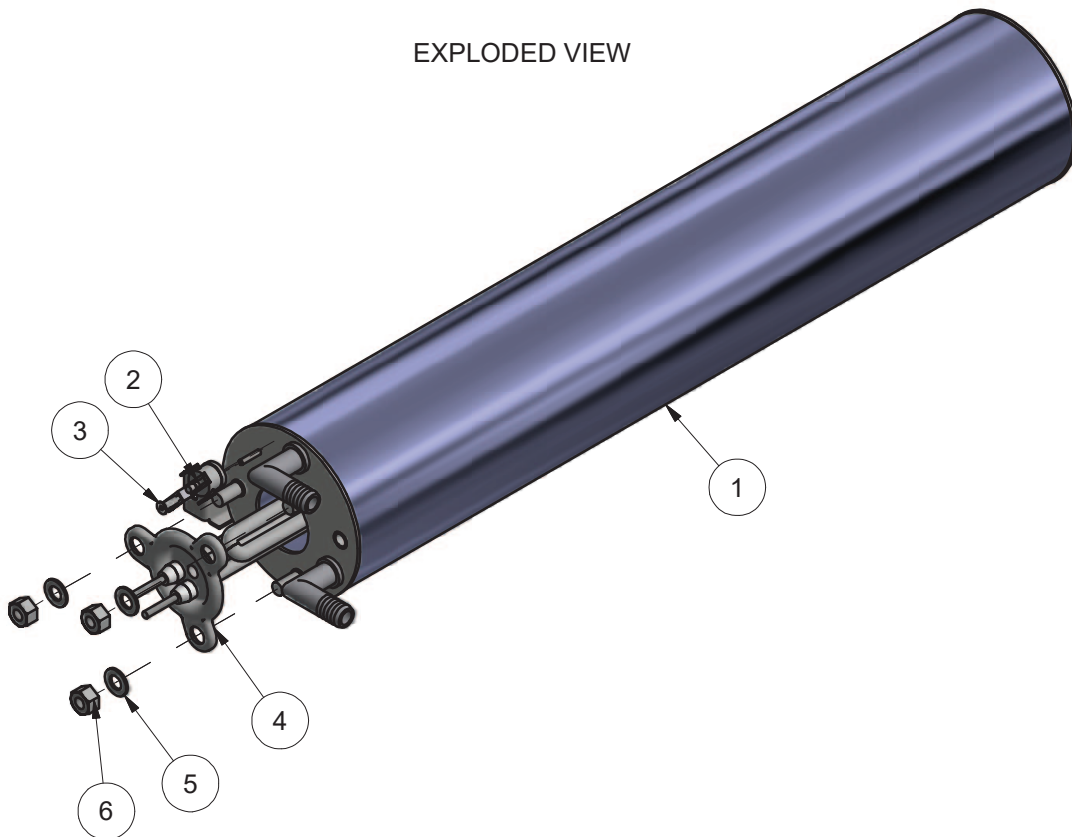


Parts List				Parts List			
ITEM	PART NUMBER	DESCRIPTION	QTY	ITEM	PART NUMBER	DESCRIPTION	QTY
1	3342	SOLENOID VALVE 1 WAY	1	8	600 41148	WASH/RINSE ARM	2
2	1247	INLET SOLENOID SUPPORT	1	9	400 90076	SS RINSE TEE	1
3	400 90077	GLVUDUDC WASH TEE	1	10	ASS06	HOSE CLAMP	10
4	400 10205	RINSE TANK SS 550MM ASSEMBLY	1	11	600 60073	HOSE HOTOTAL 11x 19 MM	4
5	400 10036	XP/XU WASH HUB ASSEMBLY	1	12	600 30324-2	DETERGENT/RINSE AID TEE	1
6	400 30194	UE(5)/M1(3) LOWER WASH TEE	1	13	400 20180	CHEMICAL PUMPS BRACKET	1
7	400 30223	WASH/RINSE SPINDLE	1	14	600 30324	RINSE AID INJECTOR	1

XU2/UD7 RINSE TANK 550MM ASSEMBLY V2

400 10243 11/04/2016 REV 3-A
From Serial number 144621

EXPLODED VIEW

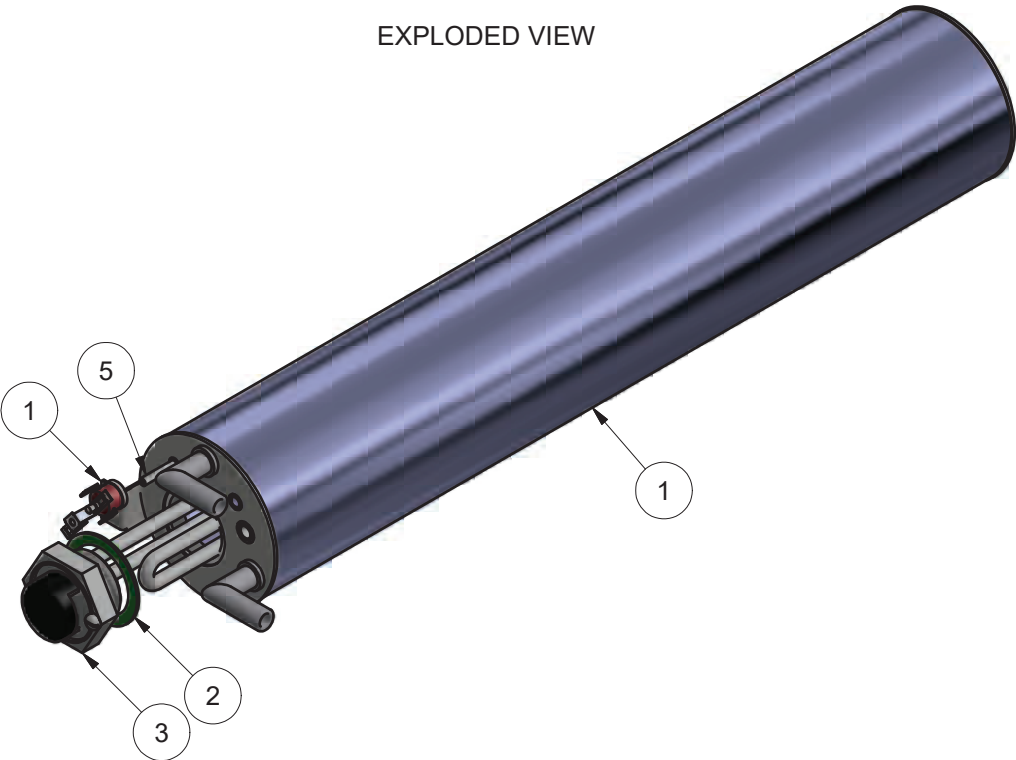


Parts List			
ITEM	PART NUMBER	DESCRIPTION	QTY
1	400 10242	XU2/UD7 RINSE TANK SS 550MM SUB ASSY V2	1
2	600 30088	TSTAT TY60/R-110C [WITH E BKT]	1
3	600 80064	STANDOFF M3 x 12	1
4	600 30495	Element 3kW Single Blade Rinse	1
5	600 80022	WASHER FL SS 304 M8x16x1.2mm	3
6	600 80063	NUT NYLOC SS M8	3

RINSE TANK SS 550MM ASSEMBLY

400 10205 6/09/2013 REV 3-C
To Serial Number 144620

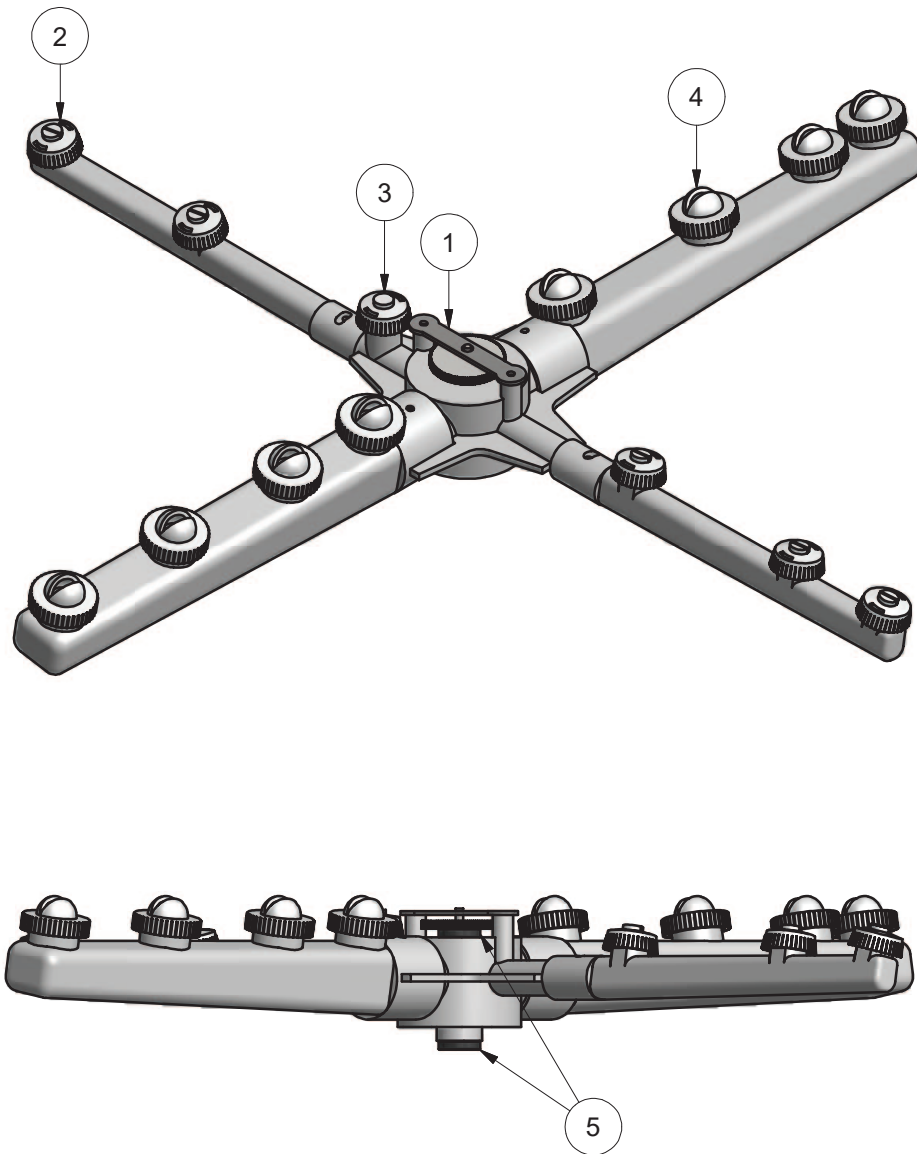
EXPLODED VIEW



Parts List			
ITEM	PART NUMBER	DESCRIPTION	QTY
1	400 10200	RINSE TANK SS 550MM SUB ASSEMBLY	1
2	3006	ELEMENT GASKET	1
3	600 30249	3KW ELEMENT	1
4	600 30088	TSTAT TY60/R-110C [WITH E BKT]	1
5	600 80064	STANDOFF M3 x 12	1

WASH/RINSE ARM ASSEMBLY

600 41148 20/04/2015 REV 1-C

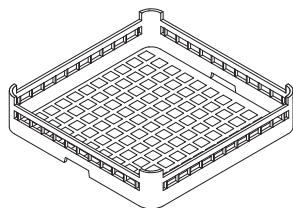


Parts List			
ITEM	PART NUMBER	DESCRIPTION	QTY
1	600 41191	THUMB SCREW RETAINING PLATE	1
2	600 40049	JET GM5 RINSE	5
3	600 40050	JET GM5 BLIND RINSE	1
4	600 40046	JET GM5 WASH	8
5	600 40064	WASH/RINSE ARM BUSH	2

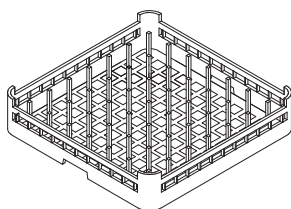
Accessories

WASHTECH XU ACCESSORIES

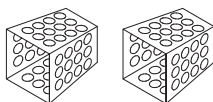
XU ACW 18/09/13 1B



600 70029
CUPRACK CB 500mm X 75mm high



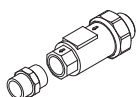
600 70028
DISHRACK P12/18 500mm 18 DISH



C660503
CUTLERY CONTAINER G



600 60080
2m HOSE ANGLE END



600 60108
DUAL CHECK VALVE

600 60111
3/8-3/8 HEX NIPPLE FITTING



C440201
RUBBER FOOT D.60 X 10

Information supplied in this manual is copyright. No part of this work may be reproduced or copied in any form or by any means, electronic or mechanical without the express permission of the author / publisher.



Distributed In
Australia by

740 Springvale Road, Mulgrave 3170, Victoria



©Washtech Ltd, January 2021



SPARES
WEBSTORE

spares.moffat.com.au



1300 263 107



sparesinfo@moffat.com.au