

# XU

## Parts Manual



**WASHTECH®**  
PROFESSIONAL WASH SYSTEMS

**MOFFAT®**  
[www.moffat.com.au](http://www.moffat.com.au)



SPARES  
WEBSTORE [spares.moffat.com.au](http://spares.moffat.com.au)

 1300 263 107

 [sparesinfo@moffat.com.au](mailto:sparesinfo@moffat.com.au)

# Spare Parts XU3

DESCRIPTION	PART NO
<b>Cabinet &amp; Door</b>	
Door Assembly	215 10015
Door Catch Plunger Assembly	400 10104
Door Seal Gasket (540mm)	600 90064
Front Panel	215 21005
Hinge Guide	400 90113
Rear Panel Lower	215 20017
Rear Panel Upper	215 10019
Rear Wheel Assembly	400 10219
<b>Controls &amp; Indicators</b>	
Door Reed Switch	600 30183
Drain Switch	600 30517
Power Relay	600 30223
Power Switch (from SN 155585)	600 30567
Power Switch (prior to SN 155585)	KIT0440081
Pressure Switch 50/20mm	600 30478
Relay	600 30080
Relay Base	600 30081
Start 1 Button (from SN 155585)	600 30564
Start 1 Button (prior to SN 155585)	KIT0440078
Start 2 Button (from SN 155585)	600 30565
Start 2 Button (prior to SN 155585)	KIT0440079
Temperature Gauge	600 30546
Temperature Gauge Sensor 1.8m	600 30604
Timer Electronic	600 30513
<b>Heating Components</b>	
Over Temperature Thermostat	600 30088
Rinse Element 3 kW	600 30495
Wash Element 2.5KW	600 30226
<b>Hoses &amp; Fittings</b>	
Hose Clamp 7/8"	ASS 05
Hose Clamp 16 mm	ASS 16
Hose Drain Pump 2.5m	600 60105
Hose Drain Pump Inlet	600 60521
Pressure Switch Hose	3067
Rinse Hose (specify length)	600 60073
Wash Pump Inlet Hose	600 60522
Wash Pump Outlet Hose	6195
Upper Wash Hose	600 60523

# Spare Parts XU3

DESCRIPTION	PART NO
<b>Pumps &amp; Solenoids</b>	
Detergent Pump Adjustable	600 30526
Detergent Pump Hose	600 30148
Detergent Squeeze Tube	600 30134
Drain Pump	600 60102
Rinse Aid Injector	600 30324
Solenoid Valve	3342
Wash Pump	3888
Wash Pump Capacitor 12.5uF	3892
<b>Wash Tank Components</b>	
Drain Upstand	600 41144
Pressure Bell O Ring	ARP 205
Rinse Nozzle Closed Head	600 40050
Rinse Nozzle Opened Head	600 40049
Rinse Nozzle O-Ring (OR R6 NBR)	600 40051
Wash Nozzle Opened head	600 40015
Wash Nozzle O-Ring (OR 2050 NBR)	600 40048
Wash / Drain Pump Filter	600 41209
Wash / Rinse Arm Assembly	600 41148
Wash / Rinse Arm Bush	400 30365
Wash / Rinse Spindle Lower	400 30370
Wash / Rinse Spindle Upper	400 30368

For more parts look in the section "Assembly Diagrams"

# Assembly Diagrams

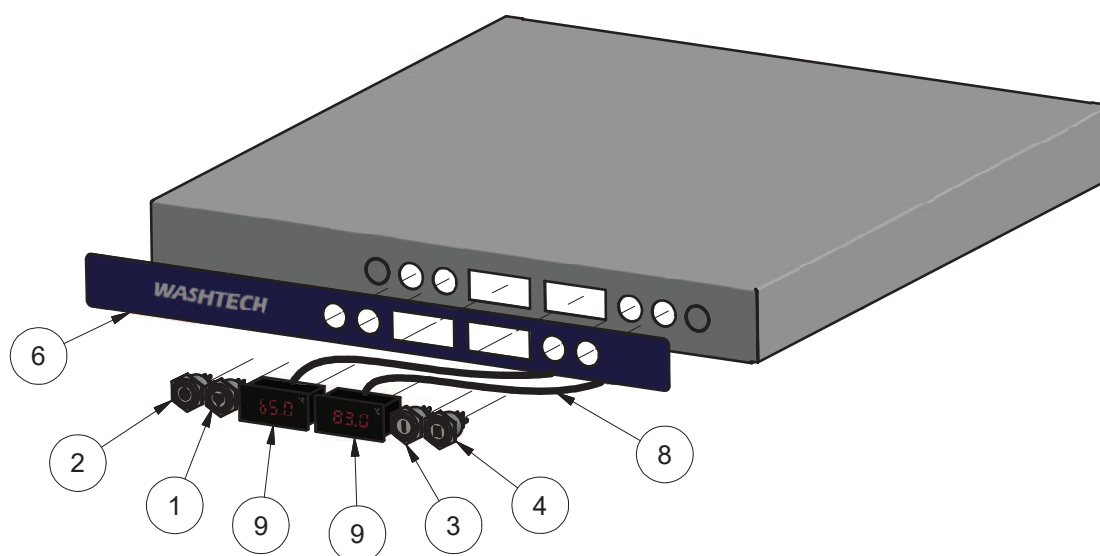
## XU-3(W) CONTROL PANEL ASSEMBLY

215 11003 5/12/2019 REV 1-C

ASSEMBLED VIEW



EXPLODED VIEW



Parts List			
ITEM	PART NUMBER	DESCRIPTION	QTY
1	600 30517	Switch Drain 22mm Maintained 2 Poles 220V Blue LED Special Symbol	1
2	600 30567	SWITCH POWER 22MM MAINTAINED 2 POLE 220V RED	1
3	600 30564	Switch Fast 22mm Momentary 2 Poles 220V Green LED Special Symbol I	1
4	600 30565	Switch Run 22mm Momentary 2 Poles 220V Green LED Special Symbol II	1
6	400 70182	LABEL XU3 CONTROL PANEL	1
7	215 20008	XU3 CONTROL PANEL	1
8	600 30604	SENSOR TEMPERATURE 1.8M V3 METAL CAP (FEMALE TERMINAL)	2
9	600 30546	TEMPERATURE GAUGE AG-903 (MALE TERMINAL)	2

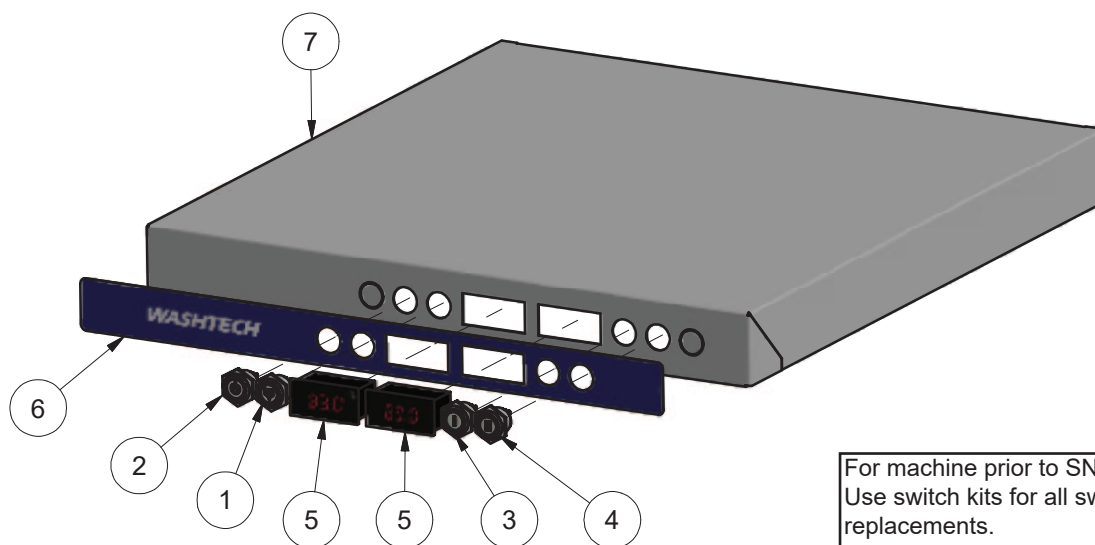
# XU-3(W) CONTROL PANEL ASSEMBLY

215 11003 28/06/2016 REV 1-A

## ASSEMBLED VIEW



## EXPLODED VIEW

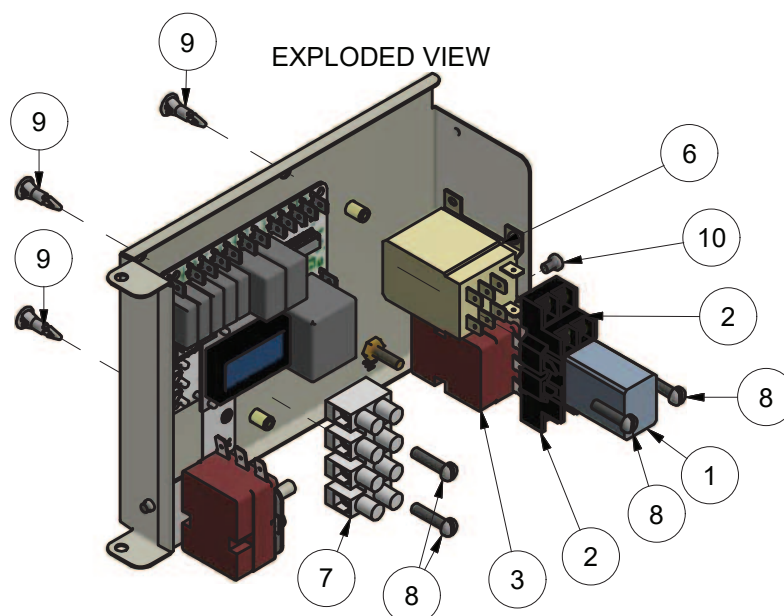
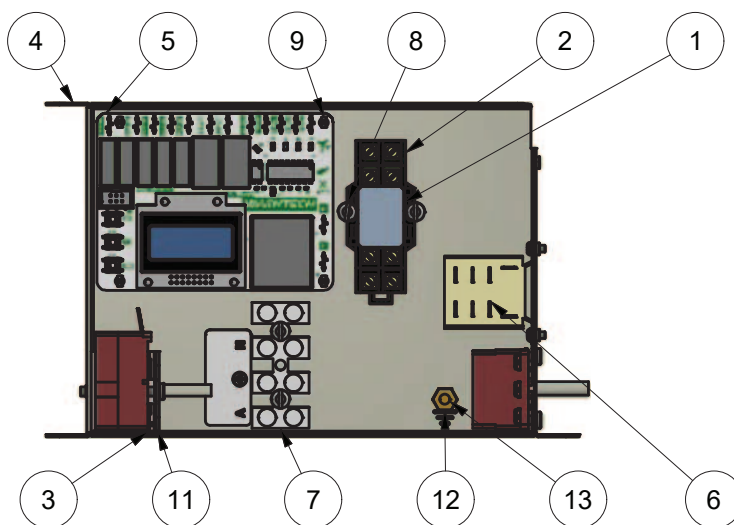


For machine prior to SN 155585  
Use switch kits for all switch  
replacements.  
See spare parts at front of manual.

Parts List			
ITEM	PART NUMBER	DESCRIPTION	QTY
1	600 30517	Switch Drain 22mm Maintained 2 Poles 220V Blue LED Special Symbol	1
2	-----	Switch Power 22mm Maintained 1 Pole 220V Red LED Power Mark	1
3	-----	Switch Fast 22mm Momentary 1 Pole 220V Green LED Special Symbol I	1
4	-----	Switch Run 22mm Momentary 1 Pole 220V Green LED Special Symbol II	1
5	600 30515	TEMPERATURE GAUGE AG-903	2
6	400 70182	CONTROL PANEL LABELS	1
7	215 10023	XU3 CONTROL PANEL SUB-ASSEMBLY	1

# XU3/XV WIRING TRAY ASSEMBLY V2

215 15004 13/06/2018 REV 1-A

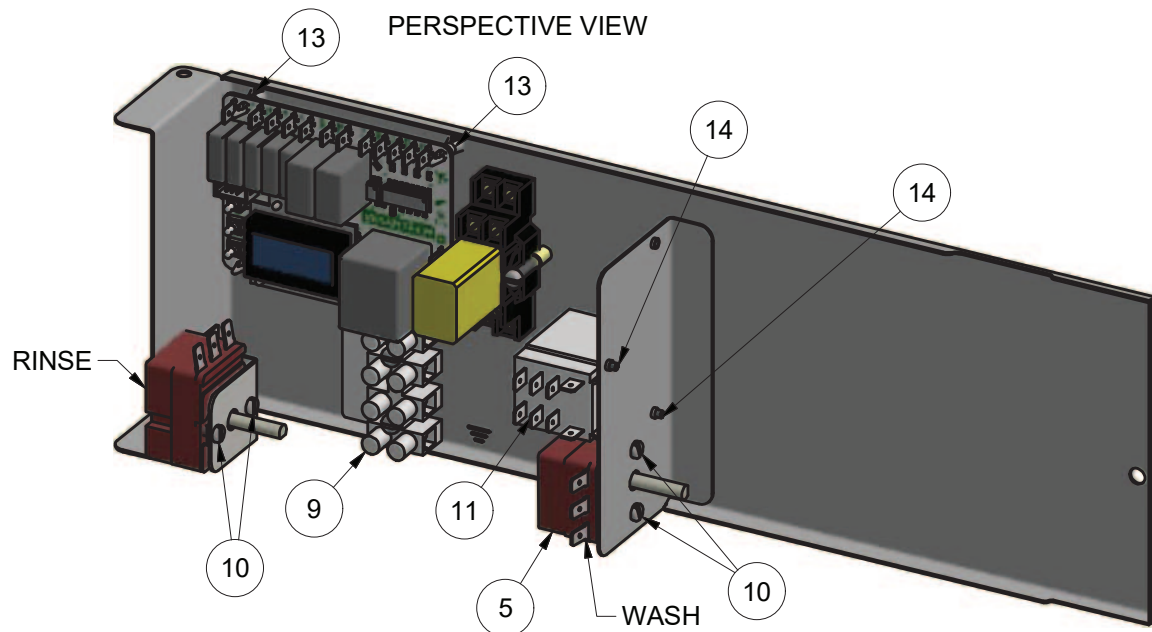
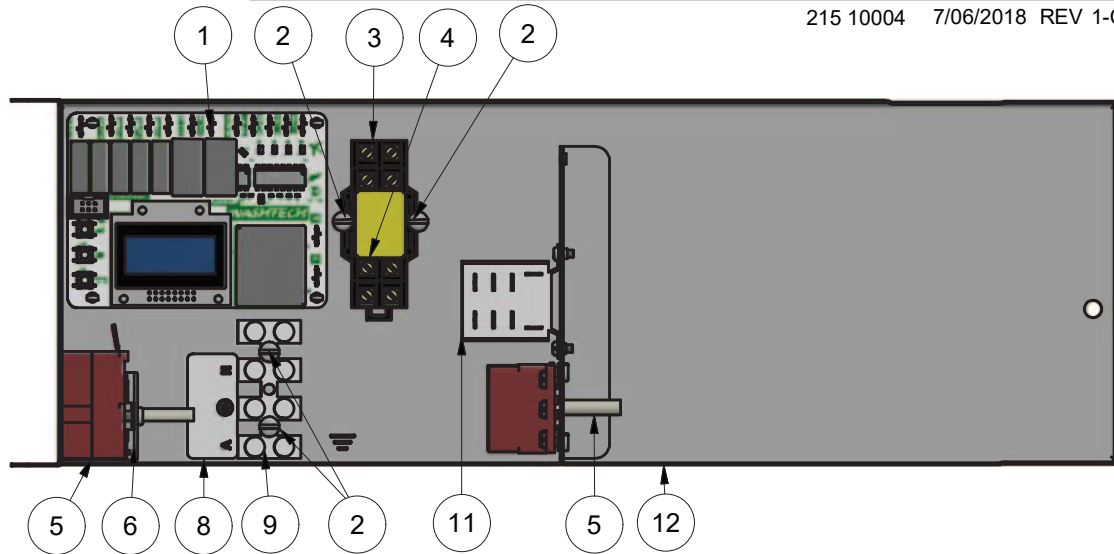


Parts List			
ITEM	PART NUMBER	DESCRIPTION	QTY
1	600 30080	RELAY 2 POLE (240VAC)	1
2	600 30081	BASE 2 POLE RELAY	1
3	30201	THERMOSTAT 1 POLE	2
4	216 21009	GLV7/XV WIRING TRAY	1
5	600 30513	TIMER ELECTRONIC	1
6	600 30223	Relay 30A 240V Power	1
7	32271	TERMINAL STRIP 4 WAY	1
8	88012	MS PAN POZI ZP M4x12	4
9	600 30527	PCB SUPPORT-END DOME HEAD	4
10	8800	MS PAN POZI ZP M4x6	5
11	190 20082	GL THERMOSTAT BRKT	1
12	8151	NUT HX BRASS 3/16" PRESSED	1
13	8816	MS RH BRASS 3/16 X 3/4	1



# XU3 WIRING TRAY ASSEMBLY

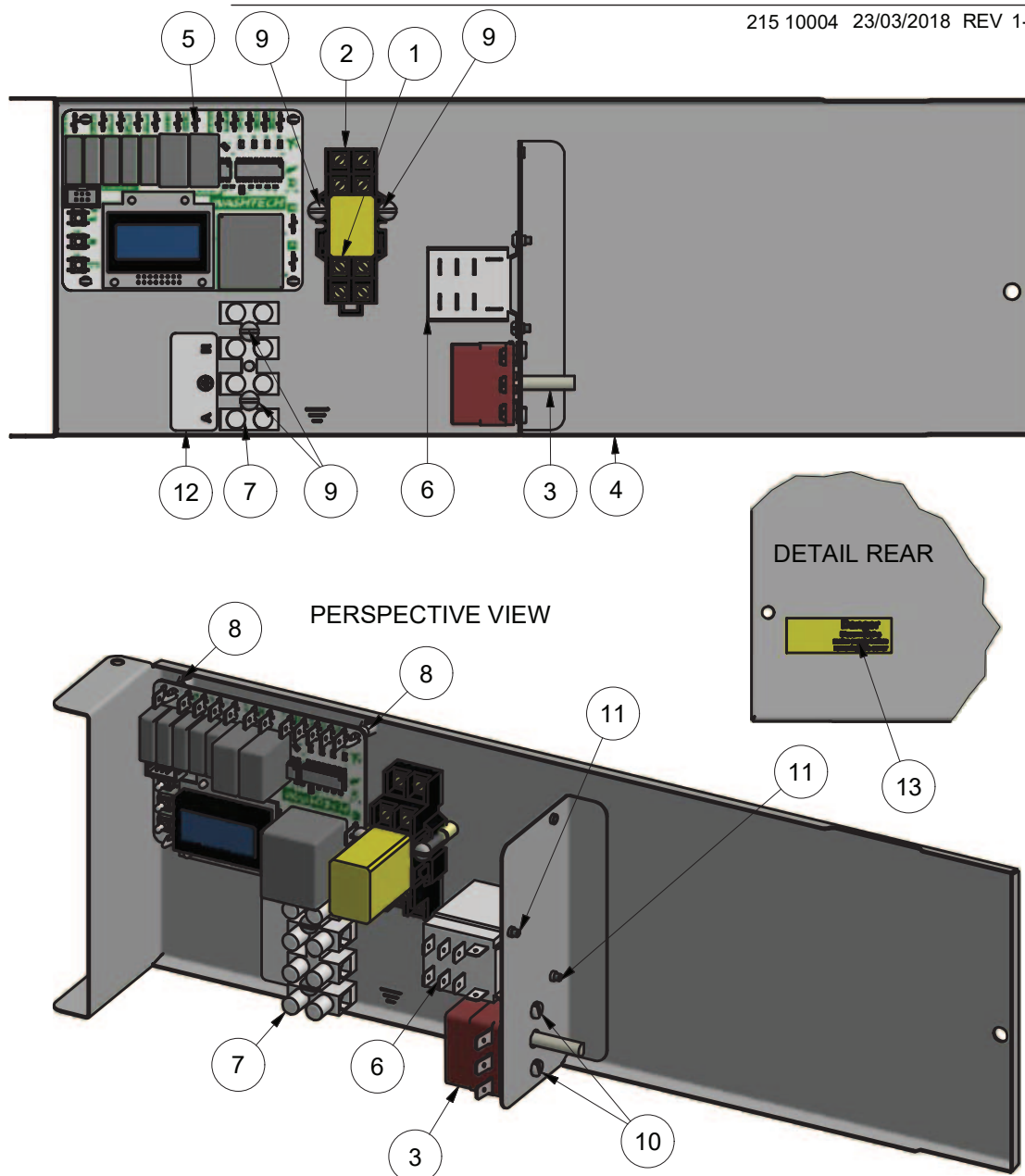
215 10004 7/06/2018 REV 1-C



Parts List			
ITEM	PART NUMBER	DESCRIPTION	QTY
1	600 30513	TIMER ELECTRONIC	1
2	88012	MS PAN POZI ZP M4x12	4
3	600 30081	BASE 2 POLE RELAY	1
4	600 30080	RELAY 2 POLE (240VAC)	1
5	30201	THERMOSTAT 1 POLE	2
6	190 20082	GL THERMOSTAT BRKT	1
8	LABEL	POWER CONNECTIONS	1
9	32271	TERMINAL STRIP 4 WAY	1
10	8800	MS PAN POZI ZP M4x6	4
11	600 30223	Relay 30A 240V Power	1
12	215 10007	XU3 WIRING TRAY SUB-ASSEMBLY	1
13	600 30527	PCB SUPPORT-END DOME HEAD	4
14	600 80052	MS RH ZP M3x6	2

# XU3 WIRING TRAY ASSEMBLY

215 10004 23/03/2018 REV 1-B



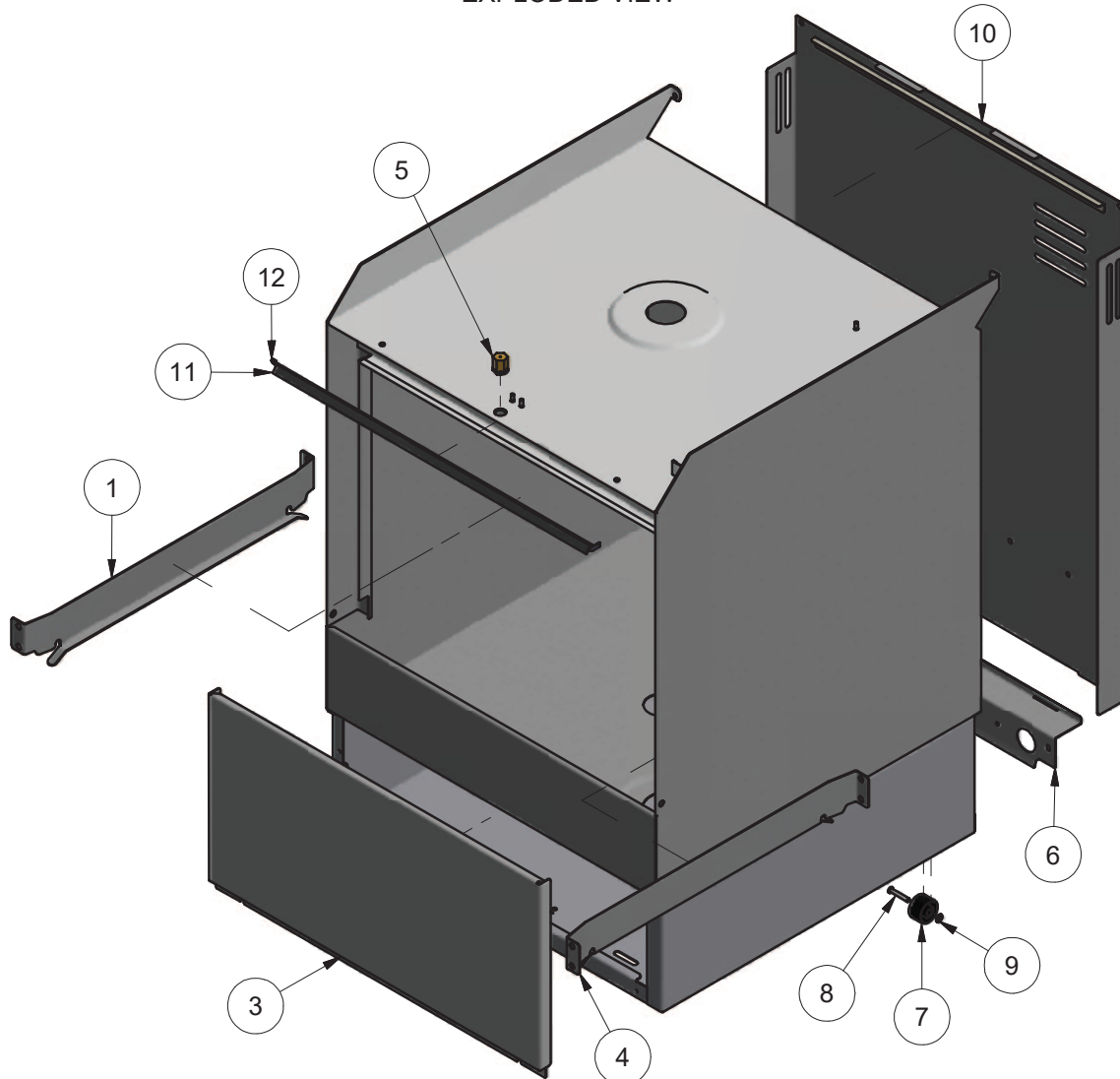
Parts List			
ITEM	PART NUMBER	DESCRIPTION	QTY
1	600 30080	RELAY 2 POLE (240VAC)	1
2	600 30081	BASE 2 POLE RELAY	1
3	30201	THERMOSTAT 1 POLE	1
4	215 10007	XU3 WIRING TRAY SUB-ASSEMBLY	1
5	600 30513	TIMER ELECTRONIC	1
6	600 30223	Relay 30A 240V Power	1
7	32271	TERMINAL STRIP 4 WAY	1
8	600 30527	PCB SUPPORT-END DOME HEAD	4
9	88012	MS PAN POZI ZP M4x12	4
10	8800	MS PAN POZI ZP M4x6	2
11	600 80052	MS RH ZP M3x6	2
12	LABEL	POWER CONNECTIONS	1
13	400 70192	LABEL DANGER YELLOW 60x20	1



# XU3(W) CABINET ASSEMBLY

215 11011 14/10/2016 REV 1-A

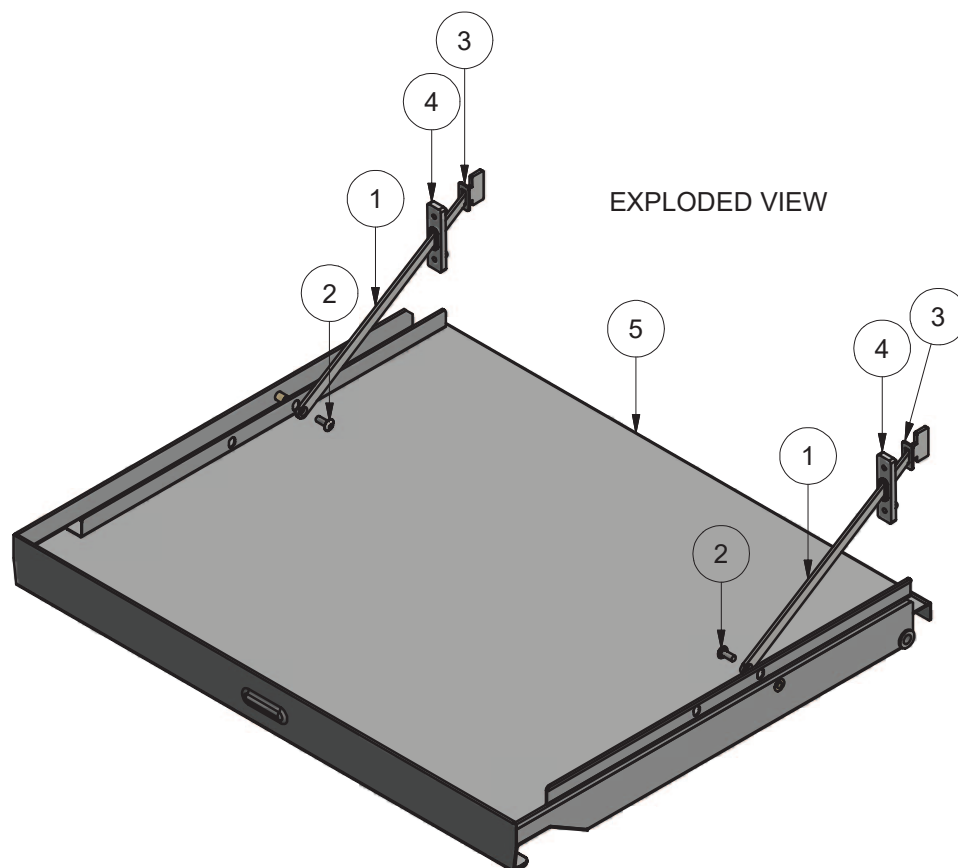
## EXPLODED VIEW



Parts List			
ITEM	PART NUMBER	DESCRIPTION	QTY
1	207 16016	UD8/XU3 LH RACK SLIDE ASSEMBLY	1
2	215 11005	XU3(W) CABINET ASSEMBLY	1
3	215 20005	XU3 FRONT PANEL	1
4	207 16014	UD8/XU3 RH RACK SLIDE ASSEMBLY	1
5	400 10104	DOOR CATCH PLUNGER ASSEMBLY	1
6	215 20017	XU3 REAR LOWER PANEL	1
7	600 90003	WHEEL DIA 32 PLASTIC	2
8	600 80086	3/16" RIVET	2
9	80002	WASHER 3/16 STARLOCK FIXER	2
10	215 10019	XU3 REAR PANEL ASSEMBLY	1
11	600 90064	GASKET XU DOOR SEAL 545mm	1
12	207 20039	XU RUBBER SEAL SUPPORT	1

# XU3 DOOR & STAYS ASSEMBLY

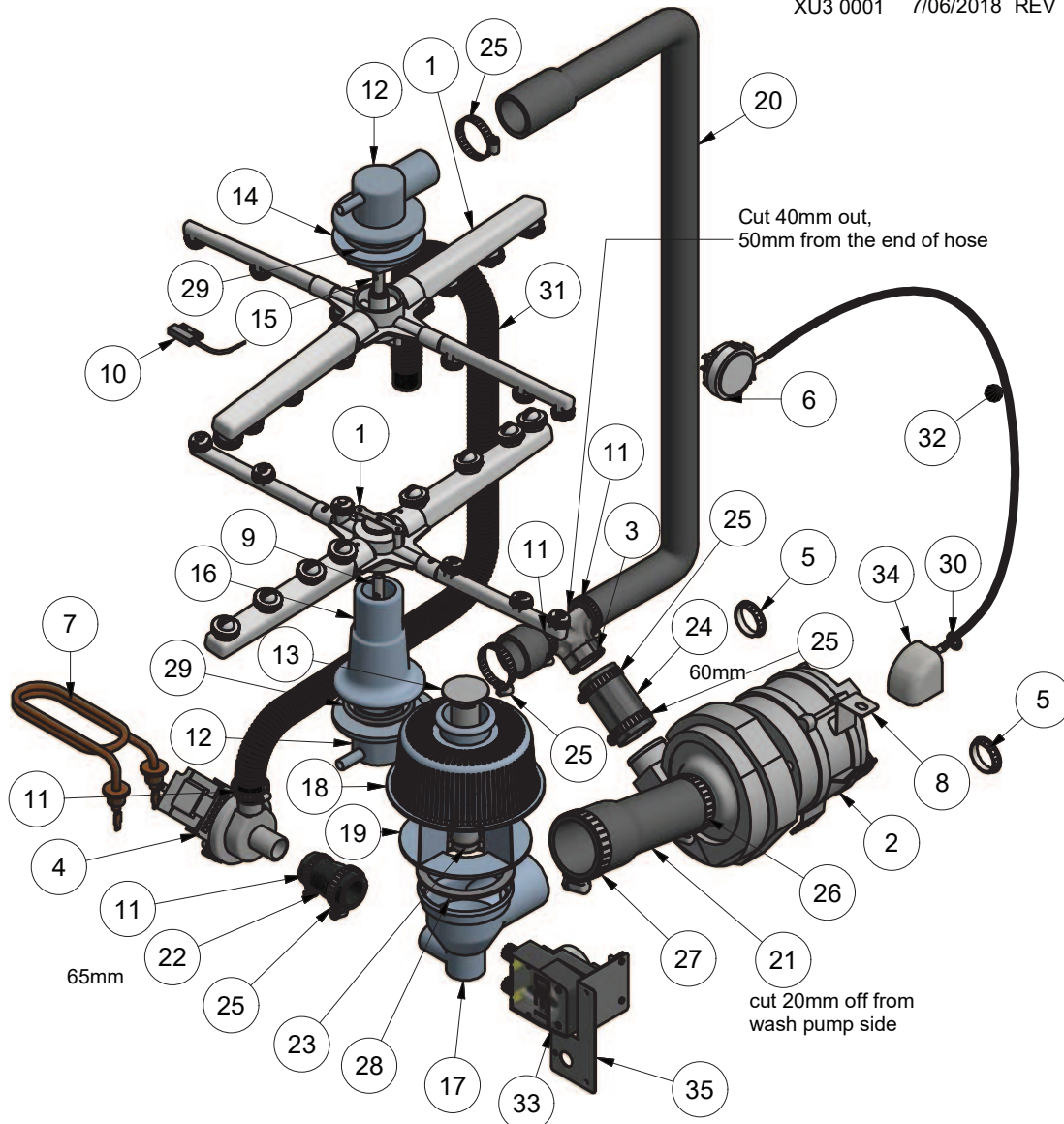
215 10020 27/04/2016 REV 1-A



Parts List			
ITEM	PART NUMBER	DESCRIPTION	QTY
1	207 20054	XU DOOR STAY	2
2	600 80017	M5 x 12 SS TRUSS HEAD SCREW	2
3	278 20066	GLV5\UD5\GL5 DOOR STOP BRKT	2
4	400 90113	HINGE GUIDE	2
5	215 10015	XU3 DOOR ASSEMBLY	1

# XU3(W) WASH SYSTEM

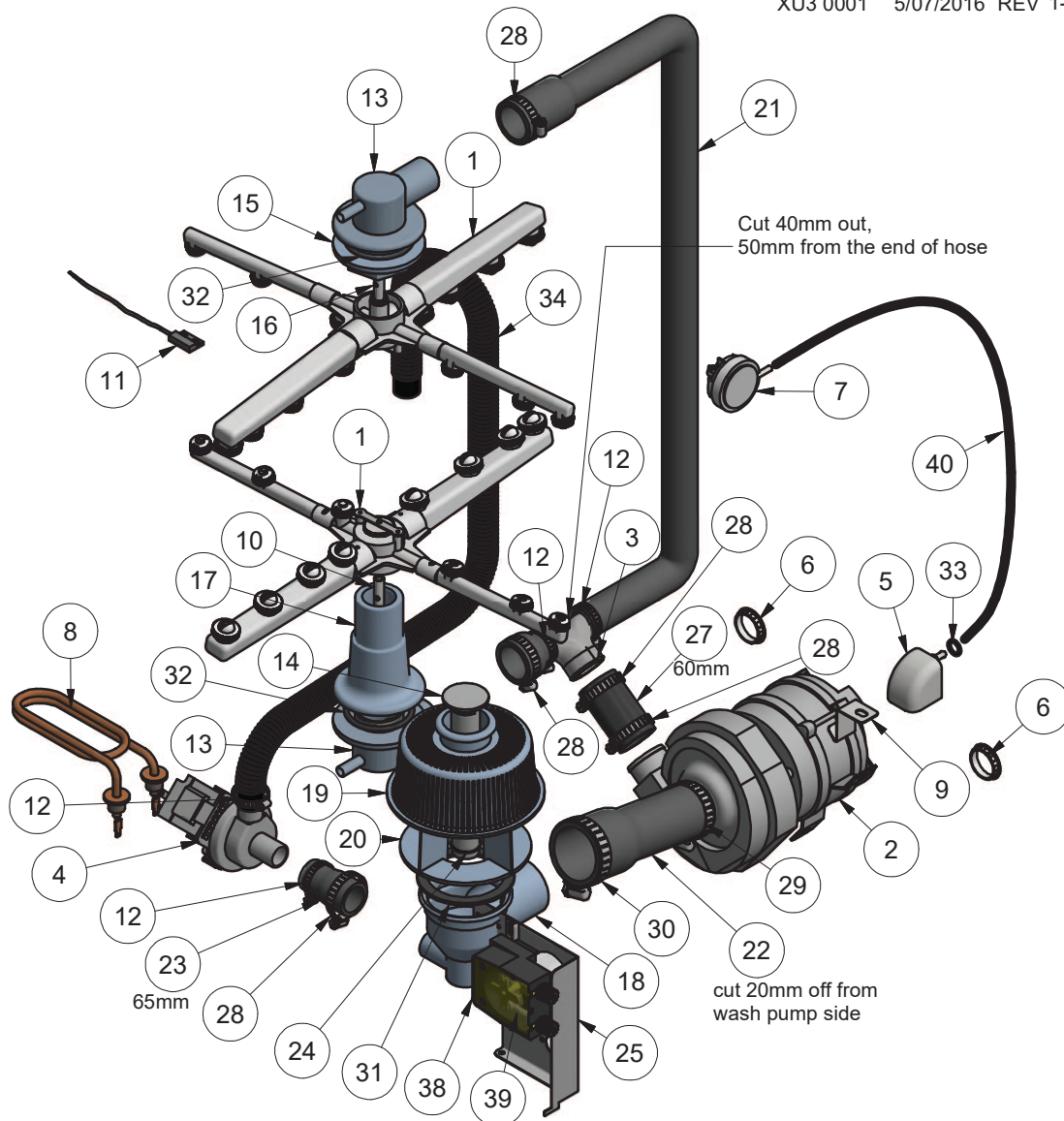
XU3 0001 7/06/2018 REV 1-C



Parts List				Parts List			
ITEM	PART NO	DESCRIPTION	QTY	ITEM	PART NO	DESCRIPTION	QTY
1	600 41148	WASH/RINSE ARM	2	19	600 41213	WASH/DRAIN SUMP COUPLING	1
2	3888	PUMP WASH 0.5HP	1	20	600 60523	HOSE UPPER WASH XU3	1
3	400 90069	38mm x 25mm REDUCER TEE	1	21	600 60522	HOSE WASH PUMP INLET XU3	1
4	600 60102	DRAIN PUMP B20-6 220-240V 50Hz	1	22	600 60521	HOSE DRAIN PUMP XU3	1
5	600 30331	GROMMET 31.8 MM	2	23	600 41145	RUBBER SEAL FOR OVERFLOW PIPE	1
6	600 30478	PRESSURE SWITCH 50/20MM	1	24	6195	HOSE 38mm 2 PLY RADIATOR (60mm long)	1
7	600 30226	ELEMENT 2500W 240V	1	25	ASS24	HOSE CLAMP ASS24	5
8	400 20197	WASH PUMP BRACKET	1	26	ASS28	HOSE CLAMP ASS28	1
9	400 30358	WASH & RINSE SPINDLE 133mm	1	27	ASS44	HOSE CLAMP ASS44	1
10	600 30183	REED SWITCH STEM	1	28	400 30363	WASH/DRAIN SUMP GASKET	1
11	ASS16	HOSE CLAMP ASS16	4	29	ARP331	O-RING 47.35IDx54OD	2
12	600 41140	WASH TEE TOP/LOWER TURRET	2	30	ARP205	O-RING 11IDx18OD	1
13	600 41144	OVERFLOW PIPE	1	31	600 60105	HOSE DRAIN PUMP 2.5M	1
14	600 41214	UPPER WASH TEE NUT	1	32	3067	PRESSURE SWITCH HOSE	1
15	400 30361	SPINDLE WASH / RINSE XU3	1	33	600 30526	PERI DETERGENT PUMP ADJUSTABLE	1
16	400 30373	COUPLING LOWER PIPE MACHINED	1	34	400 90135	PRESSURE BELL CASTING	1
17	600 41217	WASH/DRAIN SUMP	1	35	400 20309	CHEMICAL PUMPS BRACKET	1
18	600 41209	WASH/DRAIN FILTER	1				

# XU3 WASH SYSTEM

XU3 0001 5/07/2016 REV 1-A



Parts List				Parts List			
ITEM	PART NO	DESCRIPTION	QTY	ITEM	PART NO	DESCRIPTION	QTY
1	600 41148	WASH/RINSE ARM	2	19	600 41209	FILTER SUCTION	1
2	3888	PUMP WASH 0.5HP	1	20	600 41213	FERRULE WITH FILTER	1
3	400 90069	38mm x 25mm REDUCER TEE	1	21	600 60523	HOSE UPPER WASH XU3	1
4	600 60102	DRAIN PUMP B20-6 220-240V 50Hz	1	22	600 60522	HOSE WASH PUMP INLET XU3	1
5	400 90135	PRESSURE BELL CASTING	1	23	600 60521	HOSE DRAIN PUMP XU3	1
6	600 30331	GROMMET 31.8 MM	2	24	600 41145	RUBBER SEAL FOR PIPE FOR N50	1
7	600 30266	METAFLEX PRESSURE SWITCH	1	25	215 20013	XU3 CHEMICAL PUMPS BRACKET	1
8	600 30226	ELEMENT 2500W 240V	1	27	6195	HOSE 38mm 2 PLY RADIATOR (60mm long)	1
9	400 20197	WASH PUMP BRACKET	1	28	ASS24	HOSE CLAMP ASS24	5
10	400 30358	Wash&Rinse Spindle 133mm	1	29	ASS28	HOSE CLAMP ASS28	1
11	600 30183	REED SWITCH STEM	1	30	ASS44	HOSE CLAMP ASS44	1
12	ASS16	HOSE CLAMP ASS16	4	31	400 30363	Gasket XU Plastic Drain Casting	1
13	600 41140	WASH TEE TOP/LOWER TURRET	2	32	ARP331	O-RING 47.35IDx54OD	2
14	600 41144	OVERFLOW PIPE FOR N50	1	33	ARP205	O-RING 11IDx18OD	1
15	600 41214	NUT RING FOR FIXING TURRET	1	34	600 60105	HOSE DRAIN PUMP 2.5M	1
16	400 30361	WASH / RINSE SPINDLE XU3	1	38	600 30480	RINSE AID PUMP ADJUSTABLE	1
17	400 30373	COUPLING LOWER PIPE MACHINED	1	39	600 30134	SQUEEZE TUBE DETERGENT	1
18	600 41217	WASH/DRAIN SUMP	1	40	3067	PRESSURE SWITCH HOSE	1

# Wash Pump

## Part Number

3888

## Function

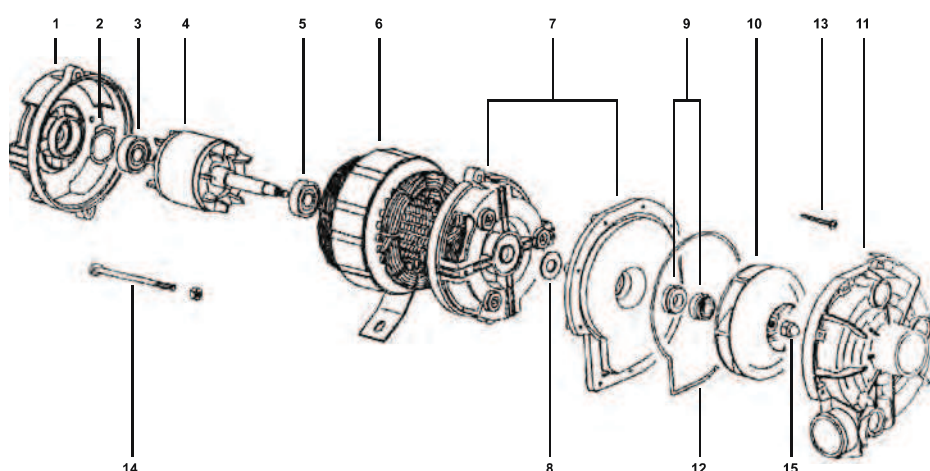
Pumps water from the wash tank to the wash arms providing a recirculating wash cycle.

## Description

Electric Pump FIR

Power:	HP 0.5 Kw 0.37	Speed:	2800 rpm
Voltage:	240 V	Amperes:	2.6 A
Frequency:	50 Hz	Capacitor:	12.5 uF/400 V

## Diagram



ITEM	DESCRIPTION	PART NO:	ITEM	DESCRIPTION	PART NO:
1	Housing		9	Seal	C630510
2	Compensation Ring		10	Impeller	38882
3	Ball Bearing	6201	11	Volute	38884
4	Rotor		12	Gasket	38886
5	Ball Bearing	6201	13	Pump Housing Screw	
6	Stator		14	Tie Rod	
7	Pump Support	38885	15	Impeller Nut	
8	Water Protect. Ring				

## Replacement

Drain the wash tank and switch off the power.

Disconnect the wires from the pump connectors and the pump capacitor.

Remove M6 bolt that fastens the pump to the floor of the machine.

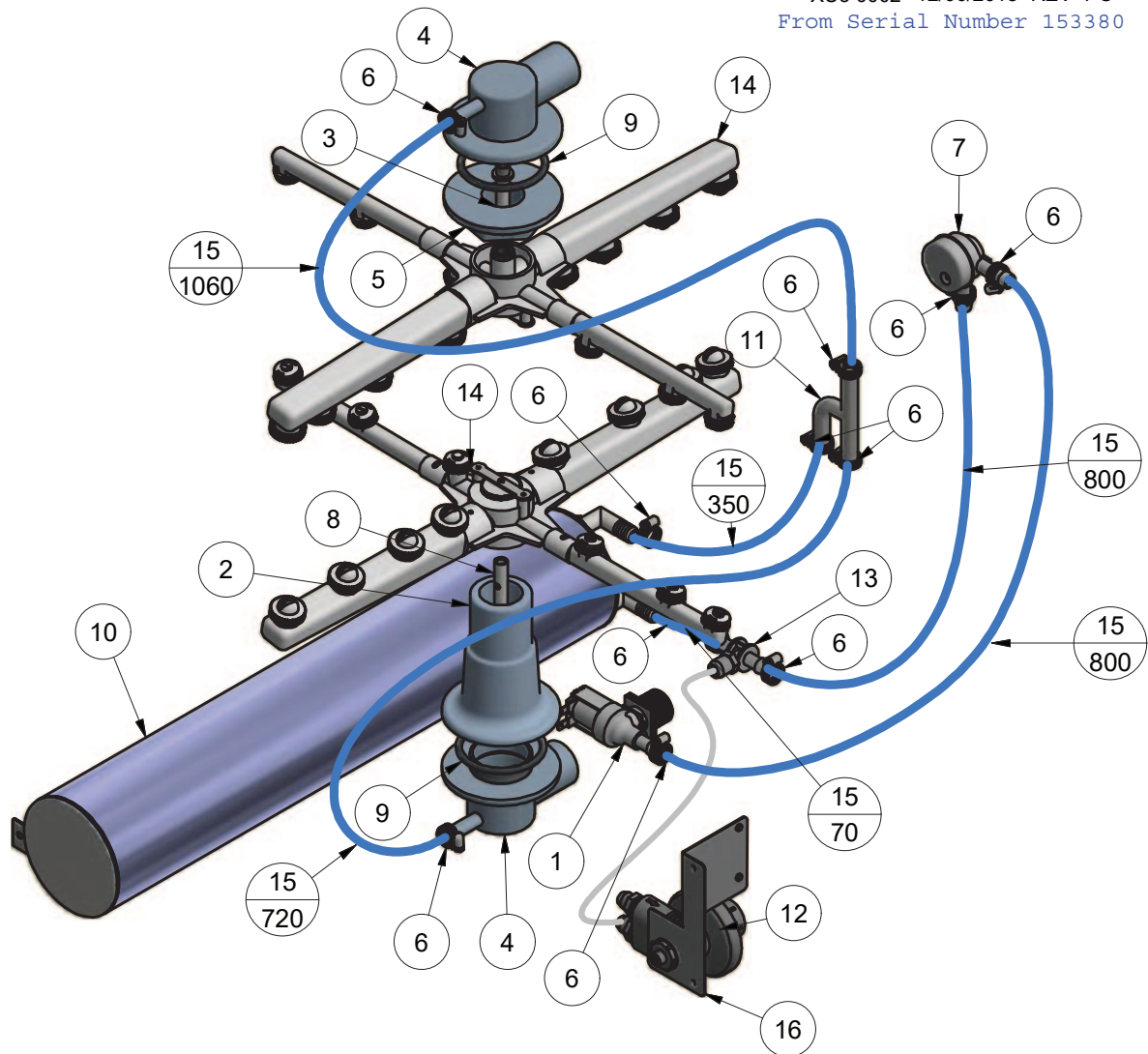
Release the hose clamps on the inlet and outlet pump hoses and remove the pump.

Replace in reverse order.



# XU3 RINSE SYSTEM

XU3 0002 12/06/2018 REV 1-C  
From Serial Number 153380

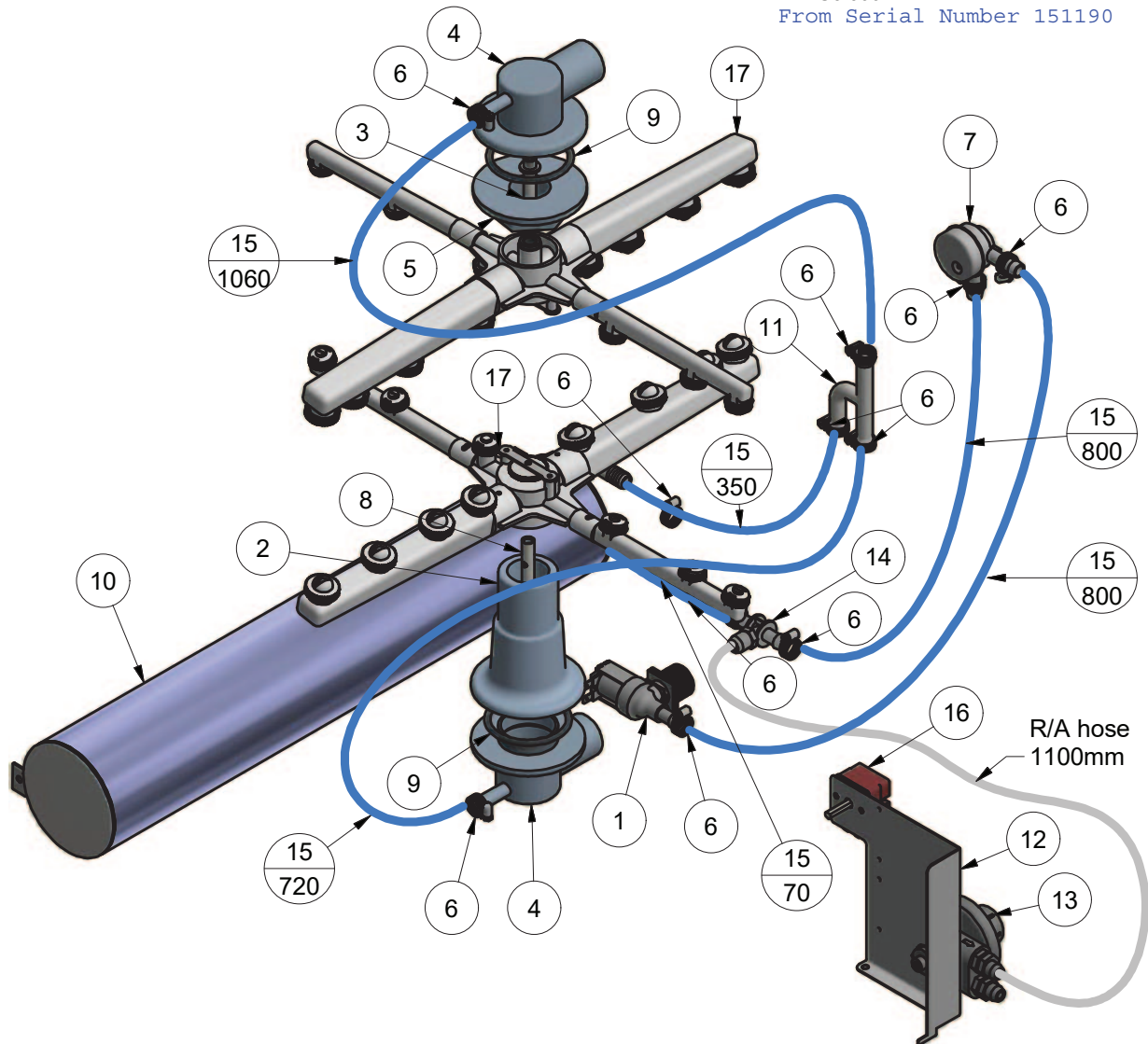


Parts List			
ITEM	PART NUMBER	DESCRIPTION	QTY
1	3342	SOLENOID VALVE 1 WAY	1
2	400 30373	LOWER WASH TEE PIPE 111mm MACHINED	1
3	400 30361	SPINDLE WASH / RINSE XU3	1
4	600 41140	WASH TEE TOP/LOWER TURRET	2
5	400 30374	NUT RING FOR FIXING TURRET MACHINED FOR GLV-7	1
6	ASS05	HOSE CLAMP	12
7	600 60053	VACUUM BREAKER 1/2" ASSY	1
8	400 30358	WASH & RINSE SPINDLE 133mm	1
9	ARP331	O-RING 47.35IDx54OD	2
10	400 10247	XU3/XV RINSE TANK ASSEMBLY	1
11	600 60230	HOSE TEE SS 12 X 12 X 12MM	1
12	600 30324	RINSE AID INJECTOR	1
13	@600 30324	DETERGENT/RINSE AID TEE	1
14	600 41148	WASH/RINSE ARM	2
15	600 60073	HOSE HOTOTAL 19 x 11 mm	1
16	400 20309	CHEMICAL PUMPS BRACKET	1



# XU3 RINSE SYSTEM

XU3 0002 14/02/2017 REV 1-B  
From Serial Number 151190

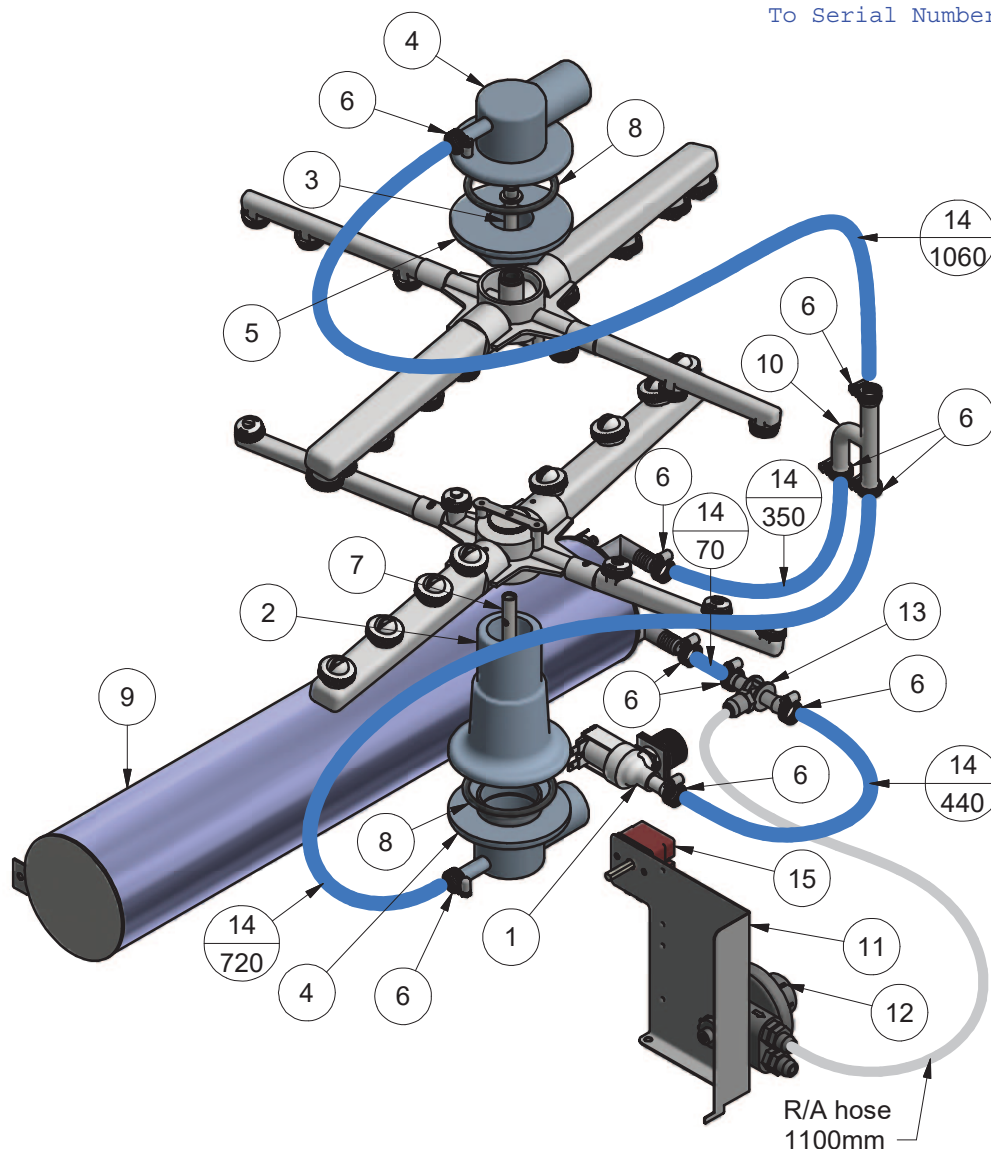


Parts List			
ITEM	PART NUMBER	DESCRIPTION	QTY
1	3342	SOLENOID VALVE 1 WAY	1
2	400 30373	COUPLING LOWER PIPE MACHINED 111MM LONG	1
3	400 30361	SPINDLE WASH / RINSE XU3	1
4	600 41140	WASH TEE TOP/LOWER TURRET	2
5	400 30374	NUT RING FOR FIXING TURRET MACHINED FOR GLV-7	1
6	ASS05	HOSE CLAMP	12
7	600 60053	VACUUM BREAKER 1/2" ASSY	1
8	400 30358	WASH & RINSE SPINDLE 133mm	1
9	ARP331	O-RING 47.35IDx54OD	2
10	400 10247	XU3/XV RINSE TANK ASSEMBLY	1
11	400 90076	SS RINSE TEE	1
12	215 20013	XU3 CHEMICAL PUMPS BRACKET	1
13	600 30324	RINSE AID INJECTOR	1
14	@600 30324	DETERGENT/RINSE AID TEE	1
15	600 60073	HOSE HOTOTAL 19 x 11 mm	1
16	30201	THERMOSTAT 1 POLE	1
17	600 41148	WASH/RINSE ARM	2

# XU3(W) RINSE SYSTEM

XU3 0003 25/10/2016 REV 1-B

To Serial Number 151189

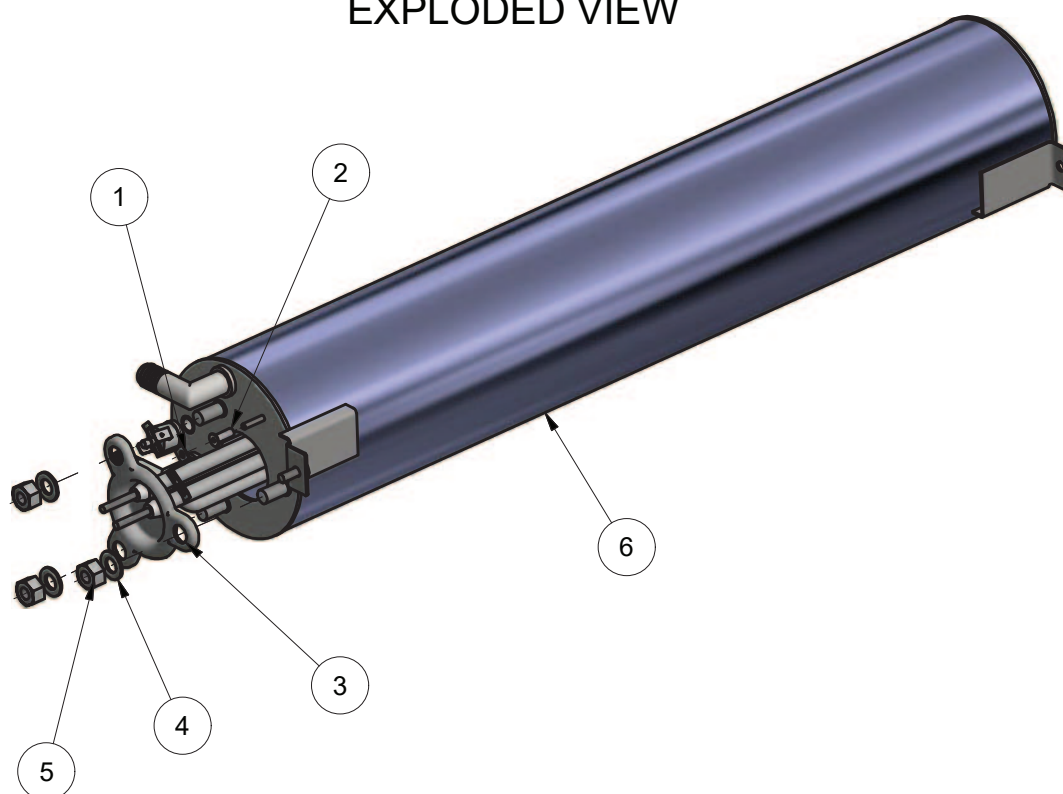


Parts List			
ITEM	PART NUMBER	DESCRIPTION	QTY
1	3342	SOLENOID VALVE 1 WAY	1
2	400 30373	COUPLING LOWER PIPE MACHINED 111MM LONG	1
3	400 30361	SPINDLE WASH / RINSE XU3	1
4	600 41140	WASH TEE TOP/LOWER TURRET	2
5	600 41214	NUT RING FOR FIXING TURRET	1
6	ASS05	HOSE CLAMP	10
7	400 30358	WASH & RINSE SPINDLE 133mm	1
8	ARP331	O-RING 47.35IDx54OD	2
9	400 10247	XU3/XV RINSE TANK ASSEMBLY	1
10	400 90076	SS RINSE TEE	1
11	215 20013	XU3 CHEMICAL PUMPS BRACKET	1
12	600 30324	RINSE AID INJECTOR	1
13	@600 30324	DETERGENT/RINSE AID TEE	1
14	600 60073	HOSE HOTOTAL 19 x 11 mm	1
15	30201	THERMOSTAT 1 POLE	1
16	600 41148	WASH/RINSE ARM	2

# XU3/XV RINSE TANK ASSEMBLY

400 10247 9/01/2017 REV 1-B

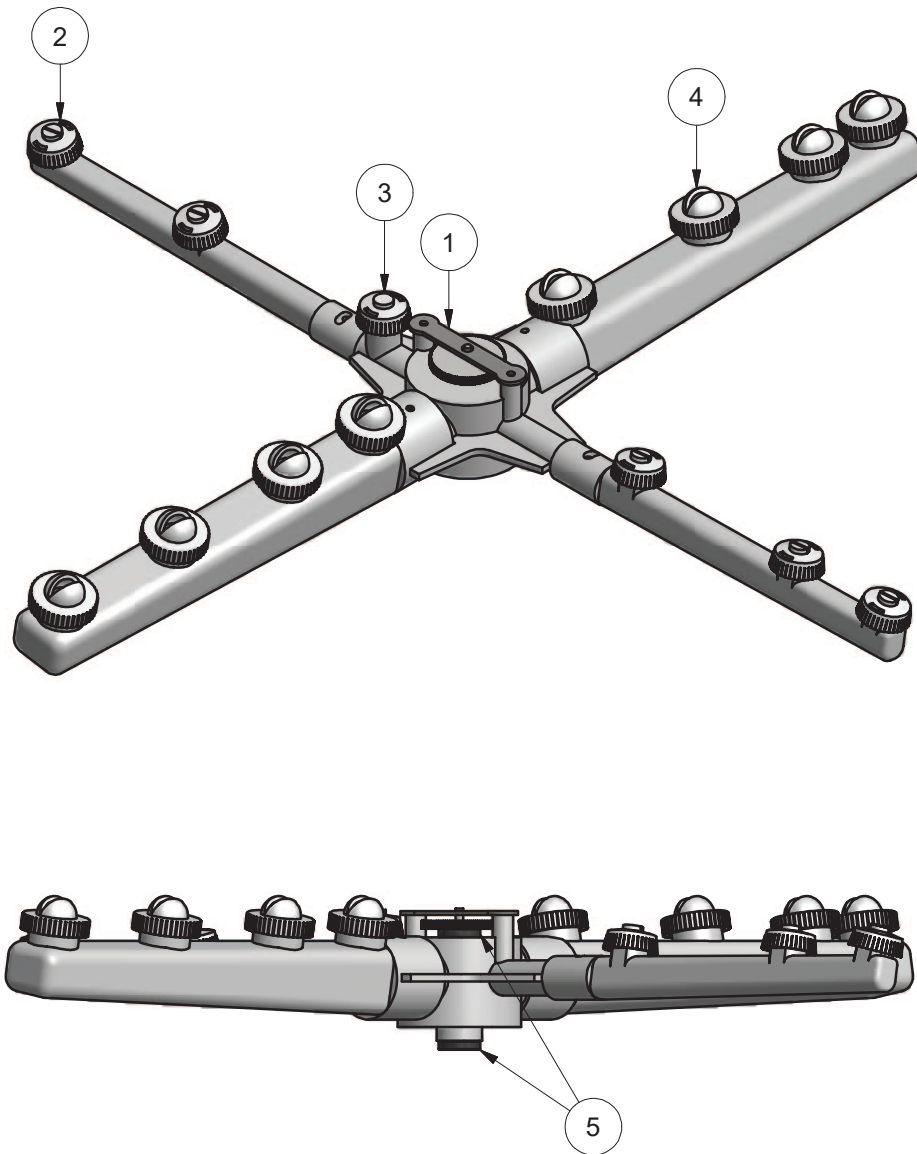
## EXPLODED VIEW



Parts List			
ITEM	PART NUMBER	DESCRIPTION	QTY
1	600 30088	TSTAT TY60/R-110C [WITH E BKT]	1
2	600 80064	STANDOFF M3 x 12	1
3	600 30495	Element 3kW Single Blade Rinse	1
4	600 80022	WASHER FL SS 304 M8x16x1.2mm	3
5	600 80063	NUT NYLOC SS M8	3
6	400 10328	RINSE TANK XU3/XV/GLV7 SS 550MM SUB ASSEMBLY V3 C/W STUDS	1

## WASH/RINSE ARM ASSEMBLY

600 41148 20/04/2015 REV 1-C

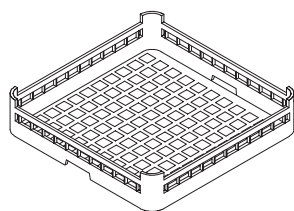


Parts List			
ITEM	PART NUMBER	DESCRIPTION	QTY
1	600 41191	THUMB SCREW RETAINING PLATE	1
2	600 40049	JET GM5 RINSE	5
3	600 40050	JET GM5 BLIND RINSE	1
4	600 40046	JET GM5 WASH	8
5	600 40064	WASH/RINSE ARM BUSH	2

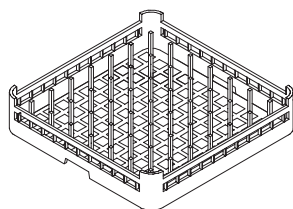
# Accessories

## WASHTECH XU ACCESSORIES

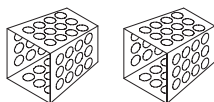
XU ACW 26/06/17 1C



**600 70029**  
**CUPRACK CB 500mm X 75mm high**



**600 70028**  
**DISHRACK P12/18 500mm 18 DISH**



**C660503**  
**CUTLERY CONTAINER G**



**600 60080**  
**2m HOSE ANGLE END**



**C440201**  
**RUBBER FOOT D.60 X 10**



Information supplied in this manual is copyright.  
No part of this work may be reproduced or copied  
in any form or by any means, electronic or  
mechanical without the express permission of the  
author/publisher

Distributed in Australia by Moffat Pty Limited



740 Springvale Road  
Mulgrave 3170  
Victoria  
Australia



**SPARES  
WEBSTORE**

[spares.moffat.com.au](http://spares.moffat.com.au)



**1300 263 107**



[sparesinfo@moffat.com.au](mailto:sparesinfo@moffat.com.au)

#### ISO9001

All Washtech products are designed and  
manufactured by Washtech using the  
internationally recognised ISO9001 quality  
management system, covering design,  
manufacture and final inspection, ensuring  
consistent high quality at all times.

In line with policy to continually develop and  
improve its products, Washtech Ltd reserves the  
right to change specifications and design without  
prior notice.

an Ali Group Company



©Washtech Ltd, January 2021

The Spirit of Excellence