

# XV

## Parts Manual



**WASHTECH®**  
PROFESSIONAL WASH SYSTEMS

# Spare Parts XV

DESCRIPTION	PART NO
<b>Cabinet &amp; Door</b>	
Door Assembly	216 11015
Door Catch Plunger Assembly	400 10104
Door Seal Gasket (500mm)	600 90064
Front Panel	216 21005
Hinge Guide	400 90113
Rear Safety Panel Assembly	216 10019
Rear Wheel Assembly	400 10219
<b>Controls &amp; Indicators</b>	
Door Reed Switch	600 30183
Drain Switch	600 30517
Power Relay	600 30223
Power Switch (from SN 155585)	600 30567
Power Switch (prior to SN 155585)	KIT0440081
Pressure Switch 50/20mm	600 30478
Relay	600 30080
Relay Base	600 30081
Start 1 Button (from SN 155585)	600 30564
Start 1 Button (prior to SN 155585)	KIT0440078
Start 2 Button (from SN 155585)	600 30565
Start 2 Button (prior to SN 155585)	KIT0440079
Temperature Gauge	600 30515
Temperature Gauge Sensor 1.8m	600 30522
Temperature Gauge Sensor 2.3m	600 30523
Timer Electronic	600 30513
<b>Heating Components</b>	
Over Temperature Thermostat	600 30088
Rinse Element 3 kW	600 30495
Wash Element 2.5KW	600 30226
<b>Hoses &amp; Fittings</b>	
Hose Clamp 7/8"	ASS 05
Hose Clamp 16 mm	ASS 16
Hose Drain Pump 2.5m	600 60105
Hose Drain Pump Inlet	600 60521
Pressure Switch Hose	3067
Rinse Hose (specify length)	600 60073
Wash Pump Inlet Hose	600 60522
Wash Pump Outlet Hose	6195
Upper Wash Hose	600 60523

# Spare Parts XV

DESCRIPTION	PART NO
<b>Pumps &amp; Solenoids</b>	
Detergent Pump Adjustable	600 30526
Detergent Pump Hose	600 30148
Detergent Squeeze Tube	600 30134
Drain Pump	600 60102
Rinse Aid Injector	600 30324
Rinse Pump	600 30508
Solenoid Valve	3342
Wash Pump	3888
<b>Wash Tank Components</b>	
Drain Upstand	600 41144
Pressure Bell O Ring	ARP 205
Rinse Nozzle Closed Head	600 40050
Rinse Nozzle Opened Head	600 40049
Rinse Nozzle O-Ring (OR R6 NBR)	600 40051
Wash Nozzle Opened head	600 40015
Wash Nozzle O-Ring (OR 2050 NBR)	600 40048
Wash /Drain Pump Filter	600 41209
Wash / Rinse Arm Assembly	600 41148
Wash / Rinse Arm Bush	400 30365
Wash / Rinse Spindle Lower	400 30370
Wash / Rinse Spindle Upper	400 30368

For more parts look in the section “Assembly Diagrams”

# Assembly Diagrams

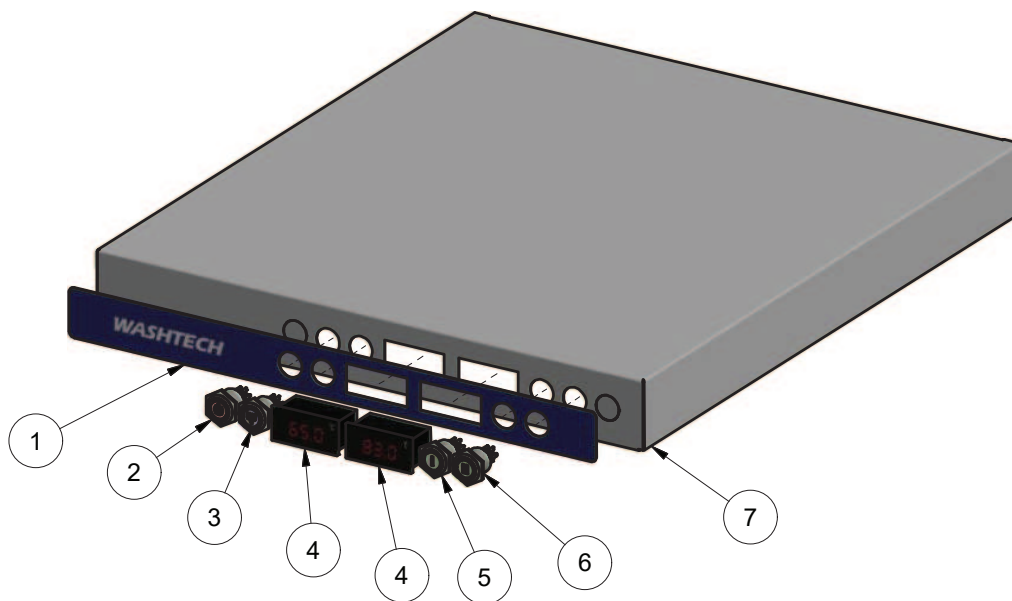
## XV CONTROL PANEL ASSEMBLY

216 13003 22/06/2016 REV 1-A

ASSEMBLED VIEW



EXPLODED VIEW



Parts List			
ITEM	PART NUMBER	DESCRIPTION	QTY
1	400 70183	LABEL XV CONTROL PANEL	1
2	600 30567	Switch Power 22mm Maintained 2 Poles 220V RED LED POWER MARK	1
3	600 30517	Switch Drain 22mm Maintained 2 Poles 220V Blue LED Special Symbol	1
4	600 30515	TEMPERATURE GAUGE AG-903	2
5	600 30564	Switch Fast 22mm Momentary 2 Poles 220V Green LED Special Symbol I	1
6	600 30565	Switch Run 22mm Momentary 2 Poles 220V Green LED Special Symbol II	1
7	216 21008	GLV7/XV CONTROL PANEL V2	1

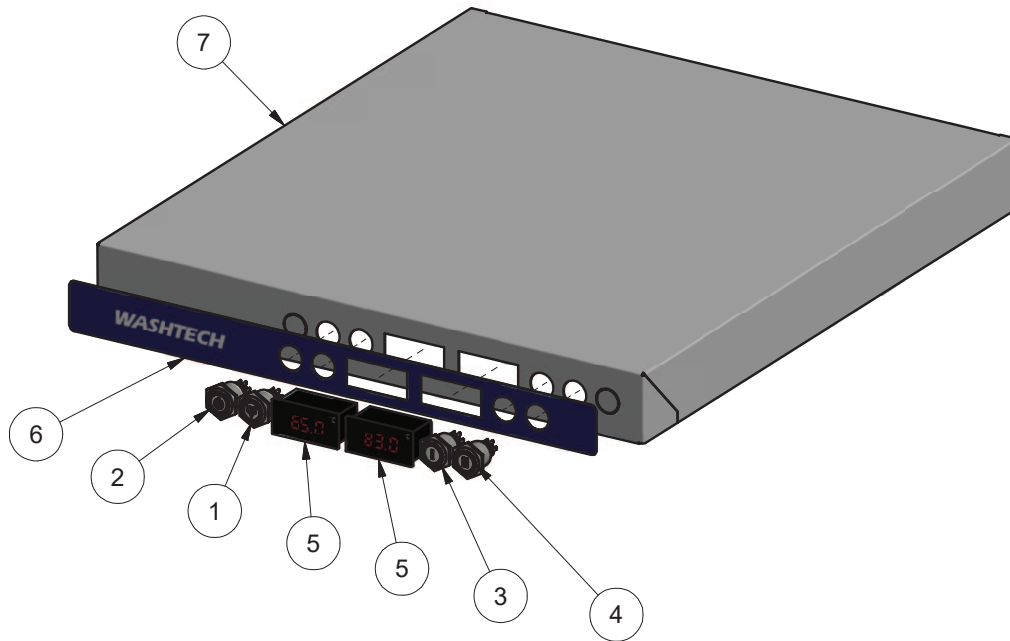
# XV CONTROL PANEL ASSEMBLY

216 11003 24/04/2018 REV 1-B

ASSEMBLED VIEW



EXPLODED VIEW



Parts List			
ITEM	PART NUMBER	DESCRIPTION	QTY
1	600 30517	Switch Drain 22mm Maintained 2 Poles 220V Blue LED Special Symbol	1
2	600 30567	Switch Power 22mm Maintained 2 Poles 220V RED LED POWER MARK	1
3	600 30564	Switch Fast 22mm Momentary 2 Poles 220V Green LED Special Symbol I	1
4	600 30565	Switch Run 22mm Momentary 2 Poles 220V Green LED Special Symbol II	1
5	600 30515	TEMPERATURE GAUGE AG-903	2
6	400 70183	LABEL XV CONTROL PANEL	1
7	216 10023	GLV7/XV CONTROL PANEL SUB-ASSEMBLY	1

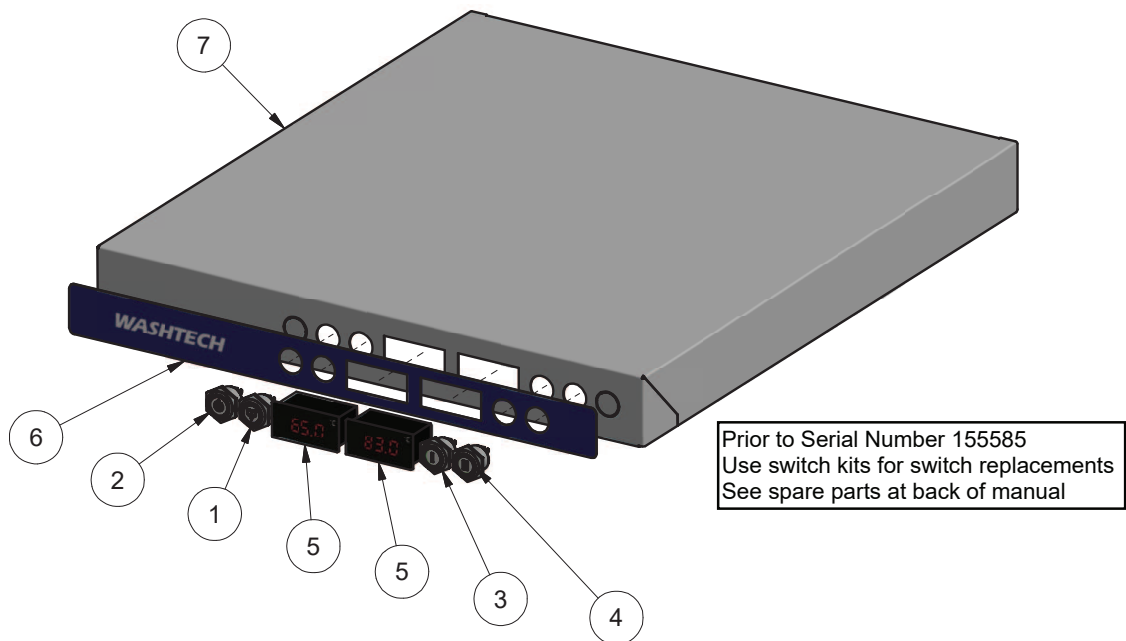
# XV CONTROL PANEL ASSEMBLY

216 11003 22/06/2016 REV 1-A

ASSEMBLED VIEW



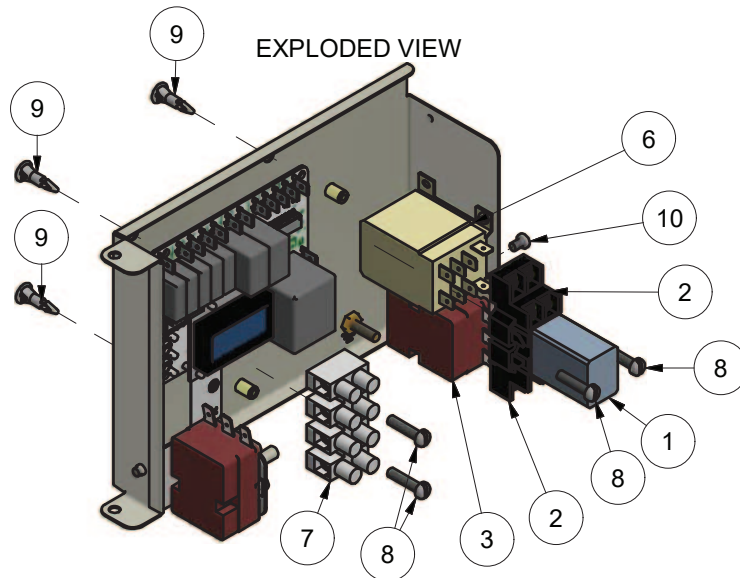
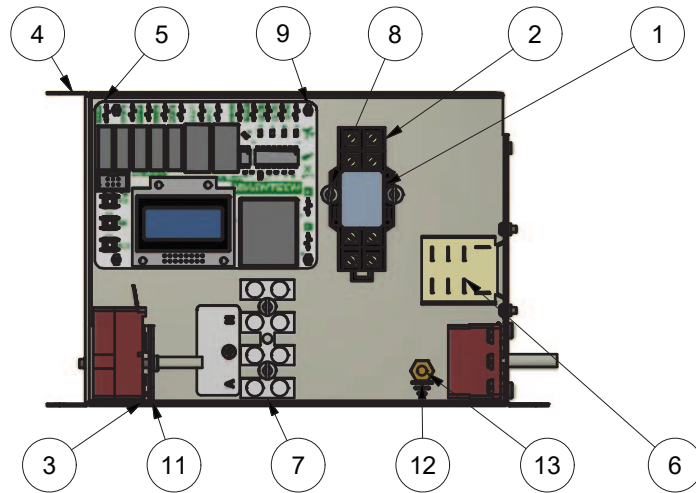
EXPLODED VIEW



Parts List			
ITEM	PART NUMBER	DESCRIPTION	QTY
1	600 30517	Switch Drain 22mm Maintained 2 Poles 220V Blue LED Special Symbol	1
2	600 30521	Switch Power 22mm Maintained 1 Pole 220V Red LED Power Mark	1
3	600 30518	Switch Fast 22mm Momentary 1 Pole 220V Green LED Special Symbol I	1
4	600 30519	Switch Run 22mm Momentary 1 Pole 220V Green LED Special Symbol II	1
5	600 30515	TEMPERATURE GAUGE AG-903	2
6	400 70183	LABEL XV CONTROL PANEL	1
7	216 10023	GLV7/XV CONTROL PANEL SUB-ASSEMBLY	1

# XU3/XV WIRING TRAY ASSEMBLY V2

215 15004 13/06/2018 REV 1-A

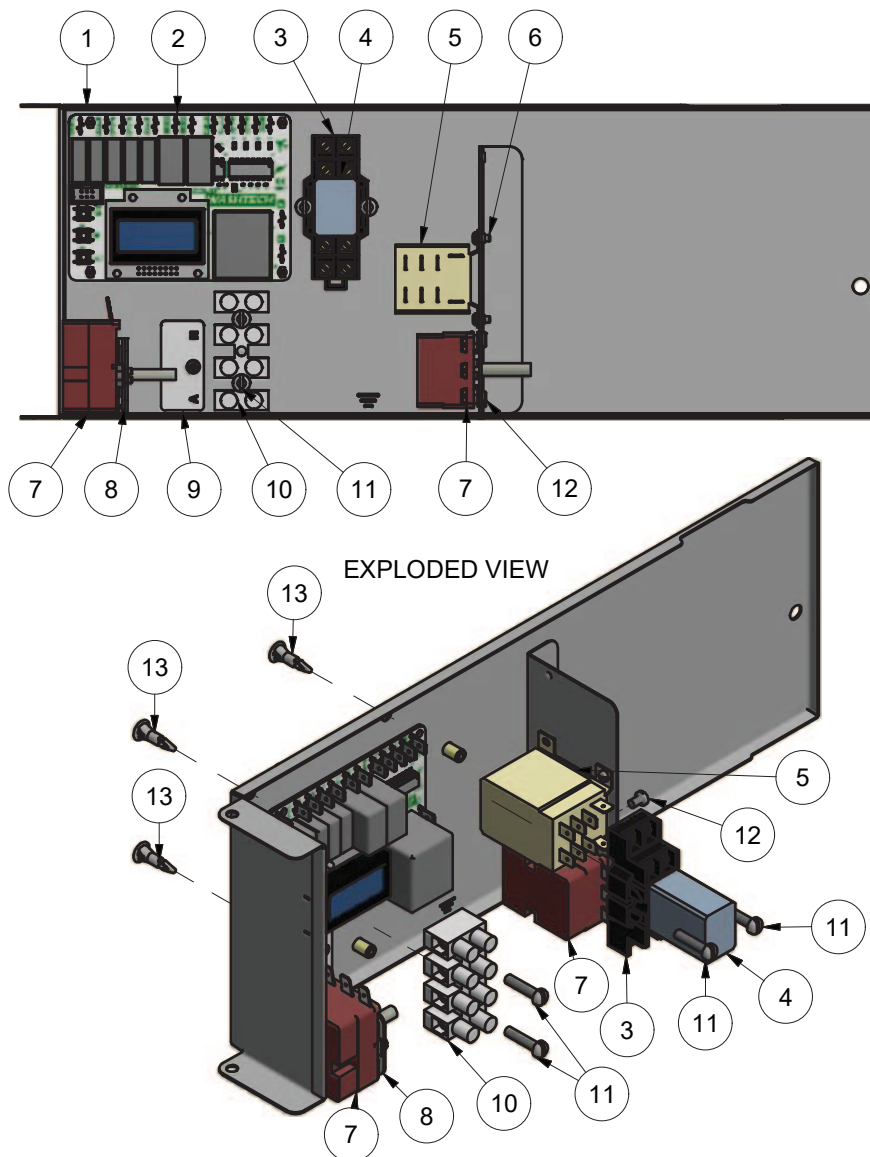


Parts List			
ITEM	PART NUMBER	DESCRIPTION	QTY
1	600 30080	RELAY 2 POLE (240VAC)	1
2	600 30081	BASE 2 POLE RELAY	1
3	30201	THERMOSTAT 1 POLE	2
4	216 21009	GLV7/XV WIRING TRAY	1
5	600 30513	TIMER ELECTRONIC	1
6	600 30223	Relay 30A 240V Power	1
7	32271	TERMINAL STRIP 4 WAY	1
8	88012	MS PAN POZI ZP M4x12	4
9	600 30527	PCB SUPPORT-END DOME HEAD	4
10	8800	MS PAN POZI ZP M4x6	5
11	190 20082	GL THERMOSTAT BRKT	1
12	8151	NUT HX BRASS 3/16" PRESSED	1
13	8816	MS RH BRASS 3/16 X 3/4	1



# XV WIRING TRAY ASSEMBLY

216 11004 11/06/2018 REV 1-D

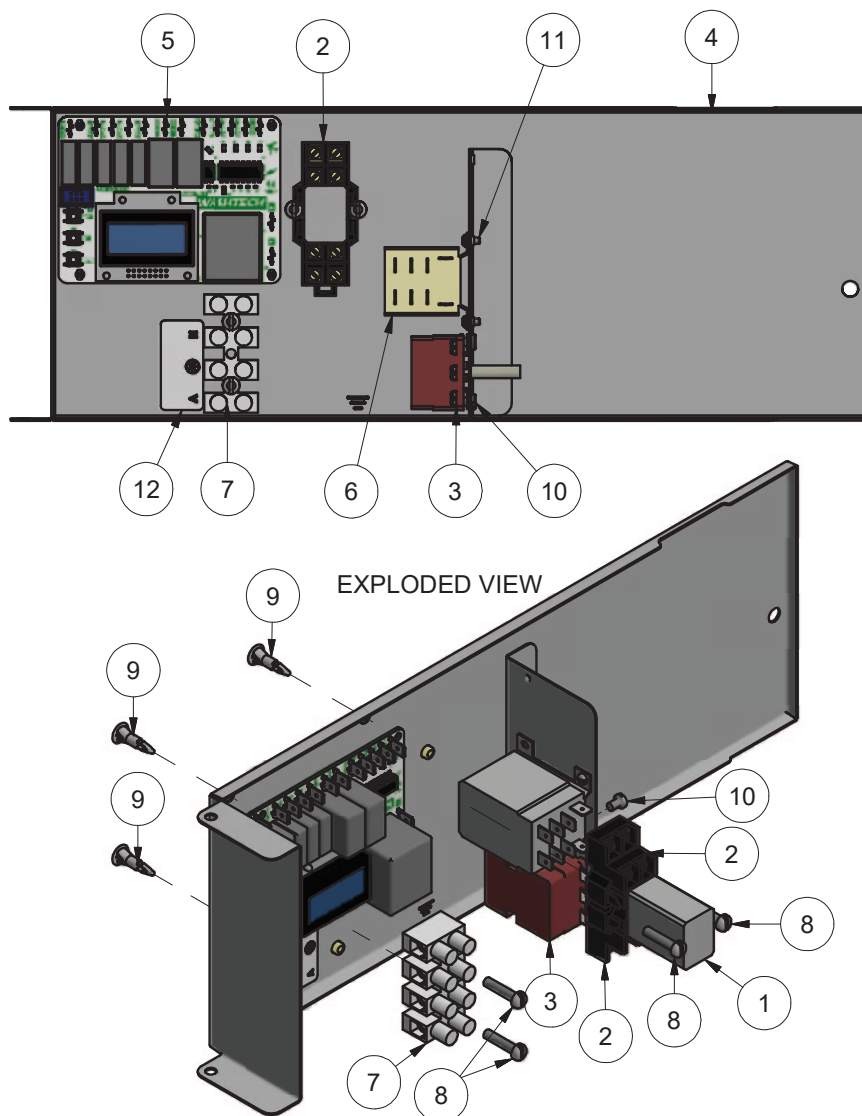


Parts List			
ITEM	PART NUMBER	DESCRIPTION	QTY
1	216 10007	GLV7/XV WIRING TRAY SUB-ASSEMBLY	1
2	600 30513	TIMER ELECTRONIC	1
3	600 30081	BASE 2 POLE RELAY	1
4	600 30080	RELAY 2 POLE (240VAC)	1
5	600 30223	Relay 30A 240V Power	1
6	600 80052	MS RH ZP M3x6	2
7	30201	THERMOSTAT 1 POLE	2
8	190 20082	GL THERMOSTAT BRKT	1
9	LABEL	POWER CONNECTIONS	1
10	32271	TERMINAL STRIP 4 WAY	1
11	88012	MS PAN POZI ZP M4x12	4
12	8800	MS PAN POZI ZP M4x6	4
13	600 30527	PCB SUPPORT-END DOME HEAD	4



# XV WIRING TRAY ASSEMBLY

216 11004 5/09/2016 REV 1-B



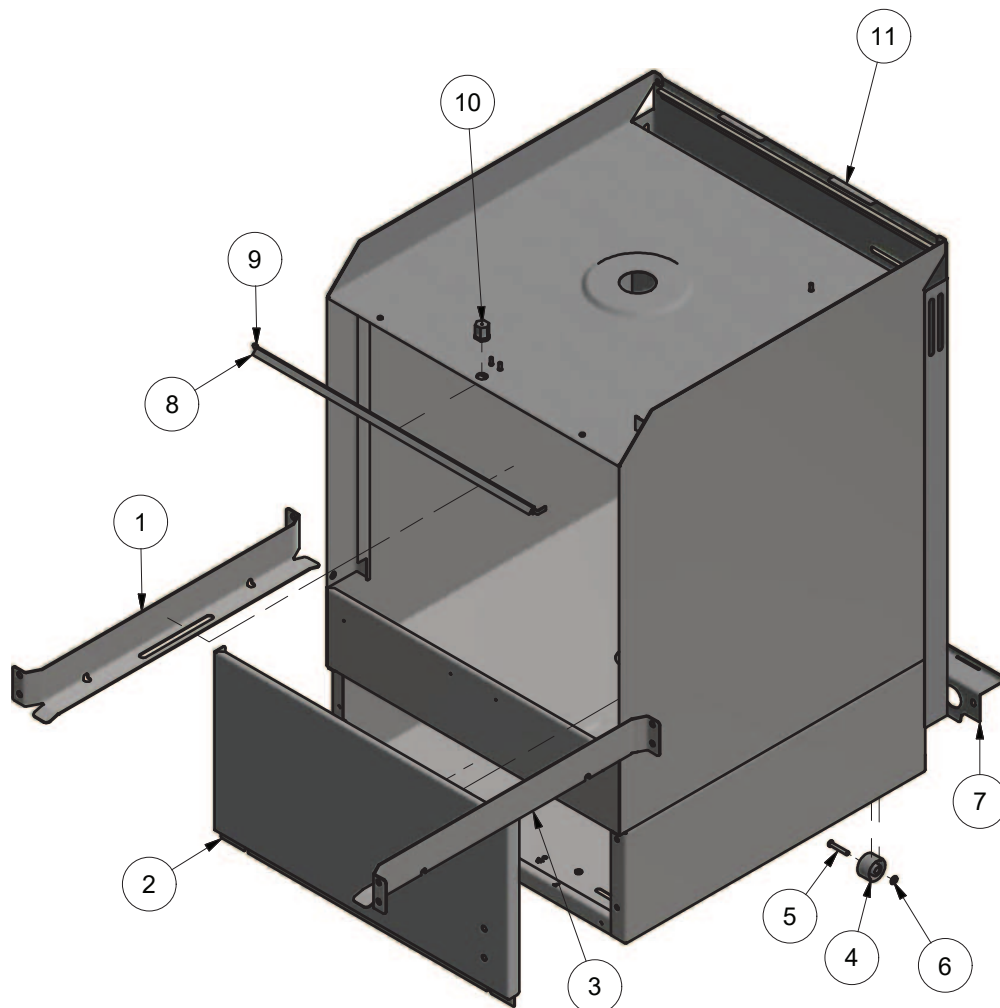
Parts List			
ITEM	PART NUMBER	DESCRIPTION	QTY
1	600 30080	RELAY 2 POLE (240VAC)	1
2	600 30081	BASE 2 POLE RELAY	1
3	30201	THERMOSTAT 1 POLE	1
4	216 10007	GLV7/XV WIRING TRAY SUB-ASSEMBLY	1
5	600 30513	TIMER ELECTRONIC	1
6	600 30223	JQX-12F POWER RELAY	1
7	32271	TERMINAL STRIP 4 WAY	1
8	88012	MS PAN POZI ZP M4x12	4
9	600 30527	PCB SUPPORT-END DOME HEAD	4
10	8800	MS PAN POZI ZP M4x6	2
11	600 80052	MS RH ZP M3x6	2
12	LABEL	POWER CONNECTIONS	1

# XV CABINET ASSEMBLY

216 13013 11/06/2018 REV 1-B

EXPLODED VIEW

FROM SN 155970

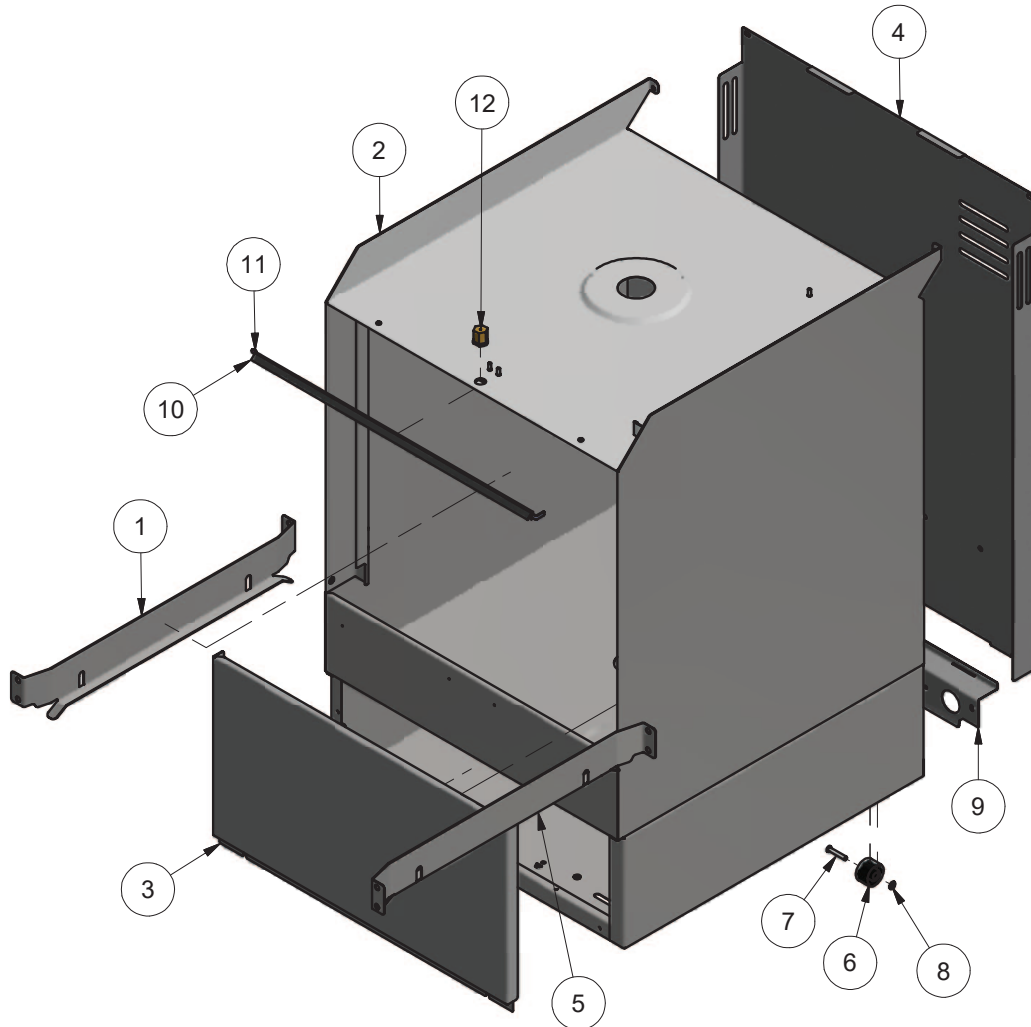


Parts List			
ITEM	PART NUMBER	DESCRIPTION	QTY
1	216 12016	GLV7/XV LH RACK SLIDE ASSEMBLY V2	1
2	216 20005	GLV7/XV FRONT PANEL c/w DUAL ADJUSTMENT	1
3	216 12017	GLV7/XV RH RACK SLIDE ASSEMBLY V2	1
4	600 90003	WHEEL DIA 32 PLASTIC	2
5	600 80086	3/16" RIVET	2
6	80002	WASHER 3/16 STARLOCK FIXER	2
7	216 21017	GLV7/XV REAR LOWER PANEL V2	1
8	600 90064	DOOR SEAL EXTRUSION GLV/UD	0.5m
9	255 20009	GLV5 RUBBER SEAL SUPPORT	1
10	400 10104	DOOR CATCH PLUNGER ASSEMBLY	1
11	216 10019	GLV7/XV REAR PANEL ASSEMBLY	1

# XV CABINET ASSEMBLY

216 11013 17/10/2016 REV 1-A

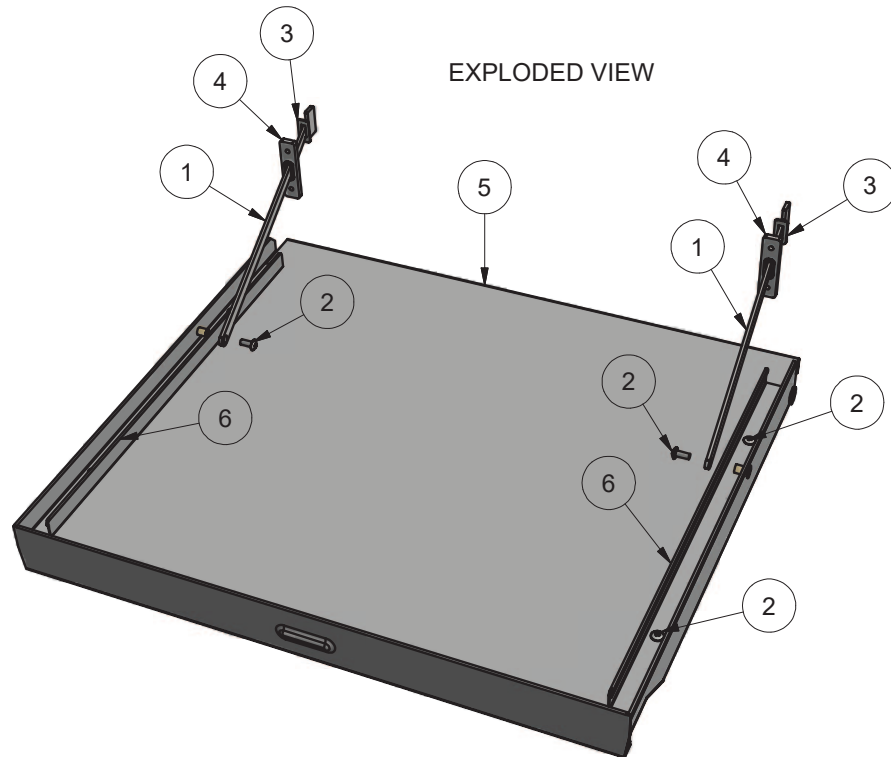
## EXPLODED VIEW



Parts List			
ITEM	PART NUMBER	DESCRIPTION	QTY
1	216 10016	GLV7/XV LH RACK SLIDE ASSEMBLY	1
2	216 11005	XV CABINET ASSEMBLY	1
3	216 20005	GLV7/XV FRONT PANEL	1
4	216 20020	GLV7/XV REAR SAFETY PANEL	1
5	216 10017	GLV7/XV RH RACK SLIDE ASSEMBLY	1
6	600 90003	WHEEL DIA 32 PLASTIC	2
7	600 80086	3/16" RIVET	2
8	80002	WASHER 3/16 STARLOCK FIXER	2
9	216 20017	GLV7/XV REAR LOWER PANEL	1
10	600 90064	DOOR SEAL EXTRUSION GLV/UD	0.5m
11	255 20009	GLV5 RUBBER SEAL SUPPORT	1
12	400 10104	DOOR CATCH PLUNGER ASSEMBLY	1

## XV DOOR & STAYS ASSEMBLY

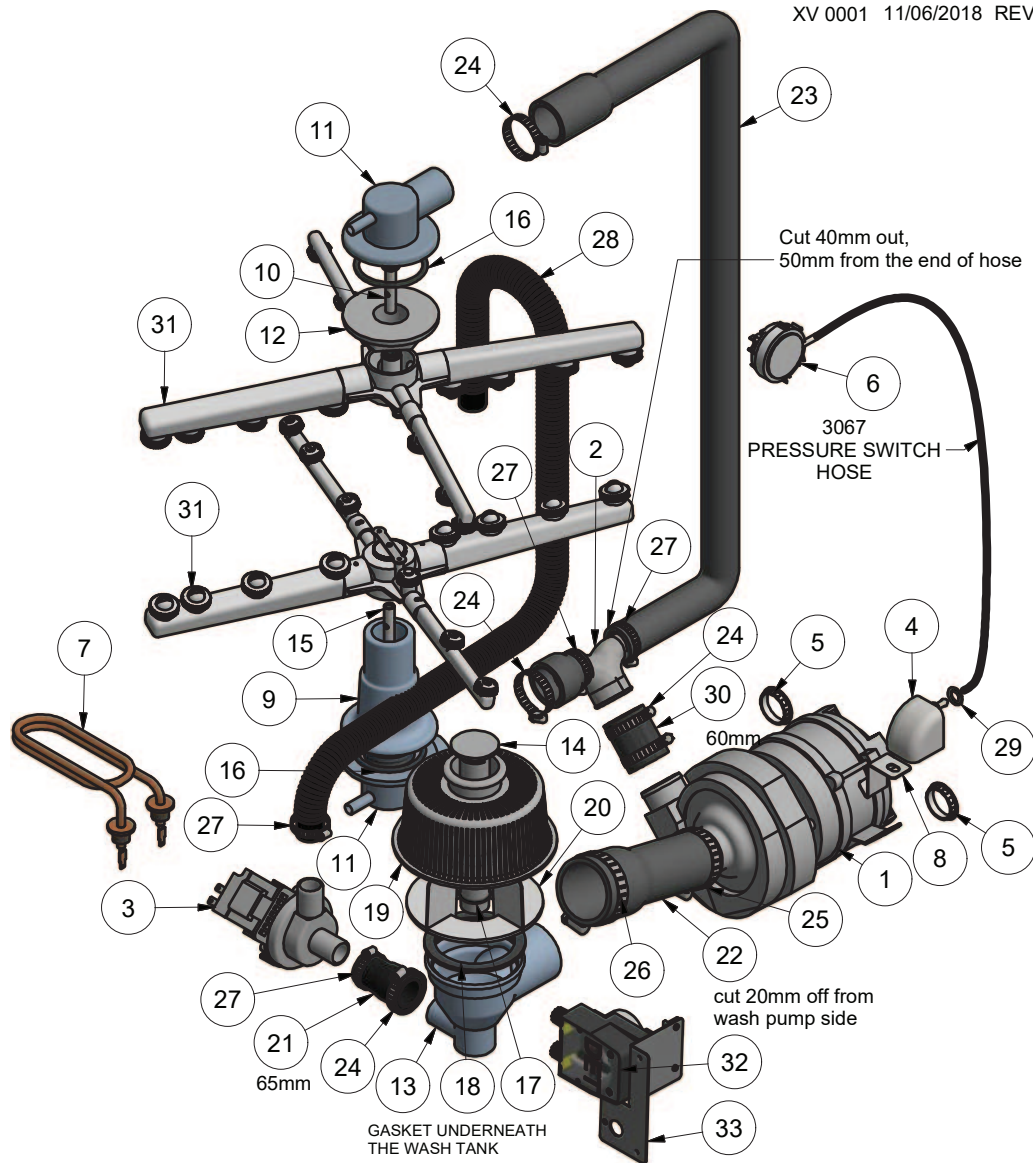
216 11020 6/10/2016 REV 1-A



Parts List			
ITEM	PART NUMBER	DESCRIPTION	QTY
1	207 20054	XU DOOR STAY	2
2	600 80017	M5 x 12 SS TRUSS HEAD SCREW	6
3	278 20066	GLV5\UD5\GL5 DOOR STOP BRKT	2
4	400 90113	HINGE GUIDE	2
5	216 11015	XV DOOR ASSEMBLY	1
6	400 20203	XU3/XV DOOR BRACKET	2

# XV WASH SYSTEM

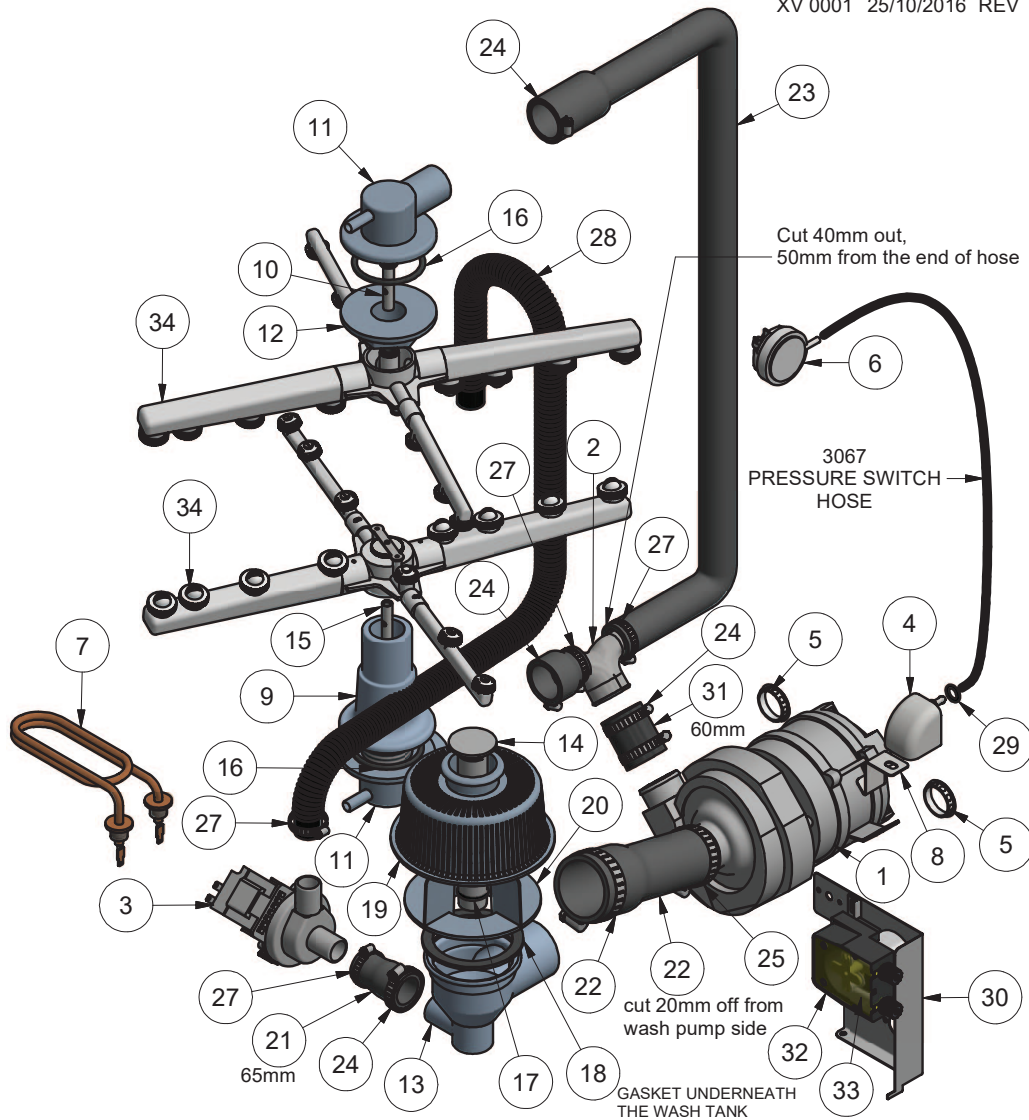
XV 0001 11/06/2018 REV 1-C



Parts List				Parts List			
ITEM	PART NO	DESCRIPTION	QTY	ITEM	PART NO	DESCRIPTION	QTY
1	3888	PUMP WASH 0.5HP	1	18	400 30363	WASH/DRAIN SUMP GASKET	1
2	400 90069	38mm x 25mm REDUCER TEE	1	19	600 41209	WASH/DRAIN FILTER FOR 600 41213 SUMP COUPLING	1
3	600 60102	DRAIN PUMP B20-6 220-240V 50Hz	1	20	600 41213	WASH/DRAIN SUMP COUPLING	1
4	400 90135	PRESSURE BELL CASTING	1	21	600 60521	HOSE DRAIN PUMP XU3	1
5	600 30331	GROMMET 31.8 MM	2	22	600 60522	HOSE WASH PUMP INLET XU3	1
6	600 30478	PRESSURE SWITCH 50/20MM	1	23	600 60523	HOSE UPPER WASH XU3	1
7	600 30226	ELEMENT 2500W 240V (THREE LOOP)	1	24	ASS24	HOSE CLAMP ASS24	5
8	400 20197	WASH PUMP BRACKET	1	25	ASS28	HOSE CLAMP ASS28	1
9	400 30373	COUPLING LOWER PIPE MACHINED	1	26	ASS44	HOSE CLAMP ASS44	1
10	400 30361	SPINDLE WASH / RINSE XU3	1	27	ASS16	HOSE CLAMP ASS16	4
11	600 41140	WASH TEE TOP/LOWER TURRET	2	28	600 60105	HOSE DRAIN PUMP 2.5M	1
12	600 41214	UPPER WASH TEE NUT	1	29	ARP205	O-RING 11IDx18OD	1
13	600 41217	WASH/DRAIN SUMP	1	30	6195	HOSE 38mm 2 PLY RADIATOR (60mm length)	1
14	600 41144	OVERFLOW PIPE	1	31	600 41148	WASH/RINSE ARM	2
15	400 30358	WASH & RINSE SPINDLE 133mm	1	32	600 30526	DETERGENT PUMP PERI ADJUSTABLE	1
16	ARP331	O-RING 47.35IDx54OD	2	33	400 20309	CHEMICAL PUMPS BRACKET	1
17	600 41145	RUBBER SEAL FOR OVERFLOW PIPE	1				

# XV WASH SYSTEM

XV 0001 25/10/2016 REV 1-B

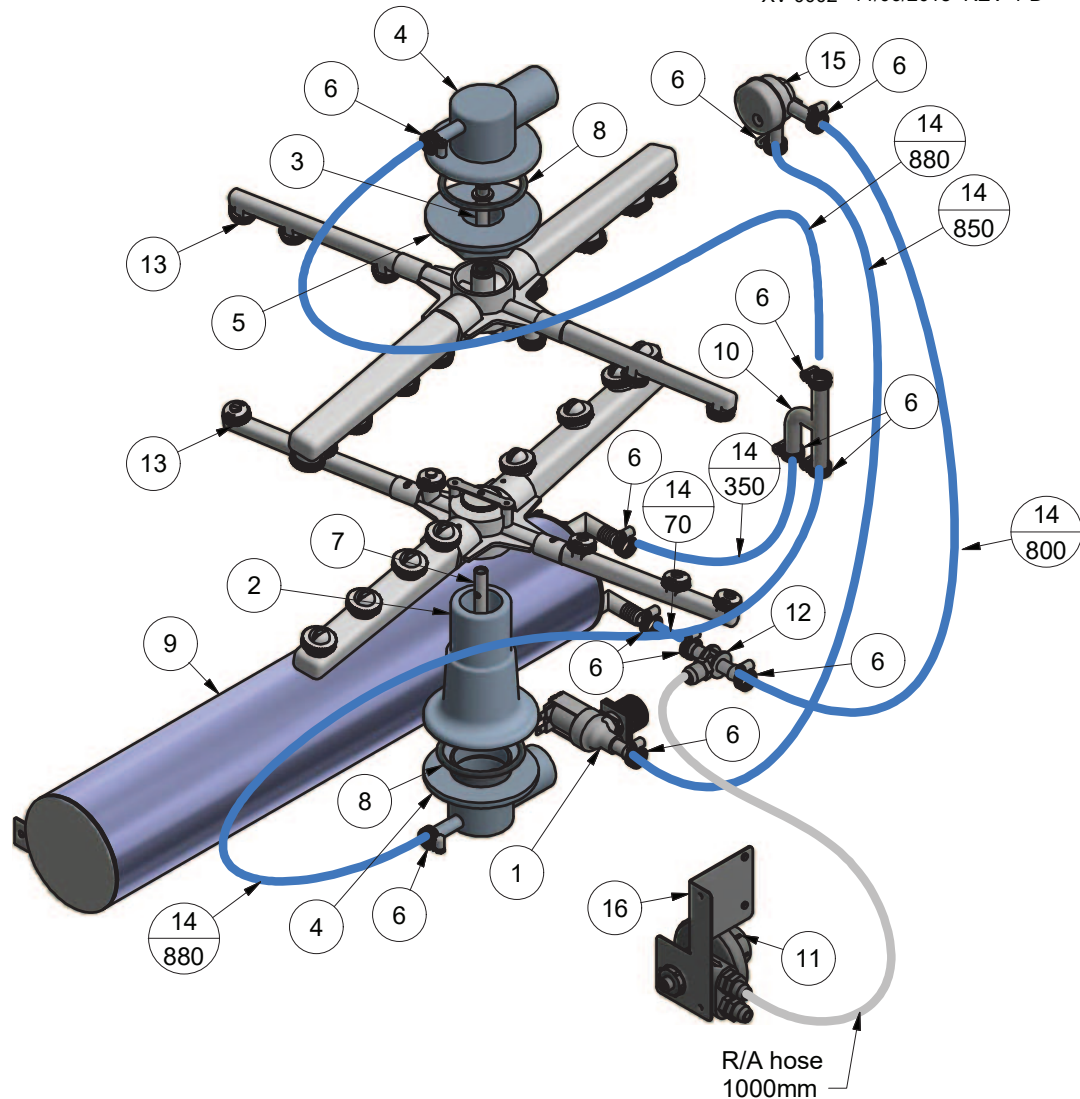


Parts List				Parts List			
ITEM	PART NO	DESCRIPTION	QTY	ITEM	PART NO	DESCRIPTION	QTY
1	3888	PUMP WASH 0.5HP	1	18	400 30363	Gasket XU Plastic Drain Casting	1
2	400 90069	38mm x 25mm REDUCER TEE	1	19	600 41209	FILTER SUCTION	1
3	600 60102	DRAIN PUMP B20-6 220-240V 50Hz	1	20	600 41213	FERRULE WITH FILTER	1
4	400 90135	PRESSURE BELL CASTING	1	21	600 60521	HOSE DRAIN PUMP XU3	1
5	600 30331	GROMMET 31.8 MM	2	22	600 60522	HOSE WASH PUMP INLET XU3	1
6	600 30266	METAFLEX PRESSURE SWITCH	1	23	600 60523	HOSE UPPER WASH XU3	1
7	600 30226	ELEMENT 2500W 240V (THREE LOOP)	1	24	ASS24	HOSE CLAMP ASS24	5
8	400 20197	WASH PUMP BRACKET	1	25	ASS28	HOSE CLAMP ASS28	1
9	400 30373	COUPLING LOWER PIPE MACHINED	1	26	ASS44	HOSE CLAMP ASS44	1
10	400 30361	SPINDLE WASH / RINSE XU3	1	27	ASS16	HOSE CLAMP ASS16	4
11	600 41140	WASH TEE TOP/LOWER TURRET	2	28	600 60105	HOSE DRAIN PUMP 2.5M	1
12	600 41214	NUT RING FOR FIXING TURRET	1	29	ARP205	O-RING 11IDx18OD	1
13	600 41217	WASH/DRAIN SUMP	1	30	215 20013	XU3 CHEMICAL PUMPS BRACKET	1
14	600 41144	OVERFLOW PIPE FOR N50	1	31	6195	HOSE 38mm 2 PLY RADIATOR (60mm length)	1
15	400 30358	WASH & RINSE SPINDLE 133mm	1	32	600 30480	RINSE AID PUMP ADJUSTABLE	1
16	ARP331	O-RING 47.35IDx54OD	2	33	600 30134	SQUEEZE TUBE DETERGENT	1
17	600 41145	RUBBER SEAL FOR PIPE FOR N50	1	34	600 41148	WASH/RINSE ARM	2



# XV RINSE SYSTEM

XV 0002 11/06/2018 REV 1-D

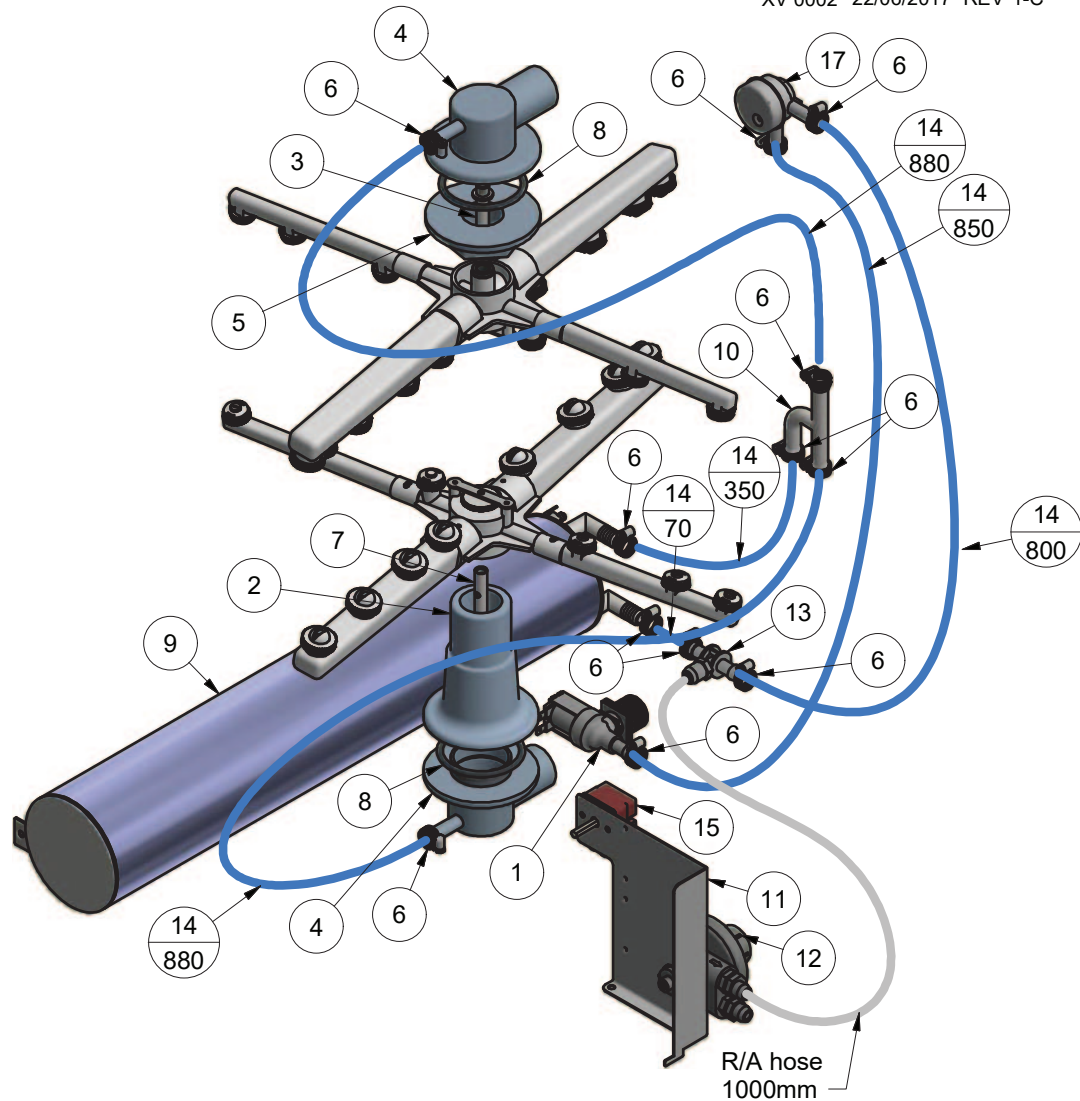


Parts List			
ITEM	PART NUMBER	DESCRIPTION	QTY
1	3342	SOLENOID VALVE 1 WAY	1
2	400 30373	LOWER WASH TEE PIPE 111mm MACHINED	1
3	400 30361	SPINDLE WASH / RINSE XU3	1
4	600 41140	WASH TEE TOP/LOWER TURRET	2
5	600 41214	UPPER WASH TEE NUT	1
6	ASS05	HOSE CLAMP	12
7	400 30358	WASH & RINSE SPINDLE 133mm	1
8	ARP331	O-RING 47.35IDx54OD	2
9	400 10247	XU3/XV RINSE TANK ASSEMBLY	1
10	600 60230	HOSE TEE SS 12 X 12 X 12MM	1
11	600 30324	RINSE AID INJECTOR	1
12	@600 30324	DETERGENT/RINSE AID TEE	1
13	600 41148	WASH/RINSE ARM	2
14	600 60073	HOSE HOTOTAL 19 x 11 mm	1
15	600 60053	VACUUM BREAKER 1/2" ASSEMBLY	1
16	400 20309	CHEMICAL PUMPS BRACKET	1



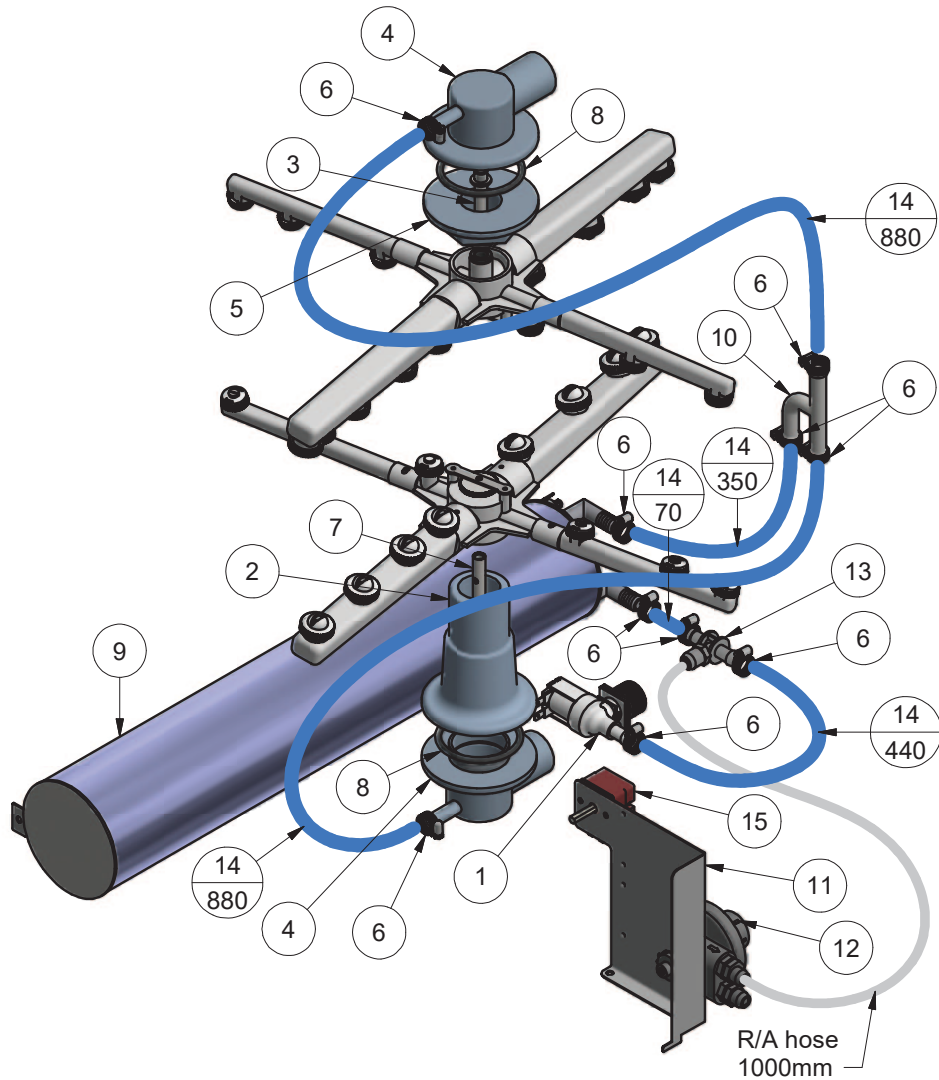
# XV RINSE SYSTEM

XV 0002 22/06/2017 REV 1-C



Parts List			
ITEM	PART NUMBER	DESCRIPTION	QTY
1	3342	SOLENOID VALVE 1 WAY	1
2	400 30373	COUPLING LOWER PIPE MACHINED 111MM LONG	1
3	400 30361	SPINDLE WASH / RINSE XU3	1
4	600 41140	WASH TEE TOP/LOWER TURRET	2
5	600 41214	NUT RING FOR FIXING TURRET	1
6	ASS05	HOSE CLAMP	12
7	400 30358	WASH & RINSE SPINDLE 133mm	1
8	ARP331	O-RING 47.35IDx54OD	2
9	400 10247	XU3/XV RINSE TANK ASSEMBLY	1
10	400 90076	SS RINSE TEE	1
11	215 20013	XU3 CHEMICAL PUMPS BRACKET	1
12	600 30324	RINSE AID INJECTOR	1
13	@600 30324	DETERGENT/RINSE AID TEE	1
14	600 60073	HOSE HOTOTAL 19 x 11 mm	1
15	30201	THERMOSTAT 1 POLE	1
16	600 41148	WASH/RINSE ARM	2
17	600 60053	VACUUM BREAKER 1/2" ASSEMBLY	1

XV 0002 25/10/2016 REV 1-B

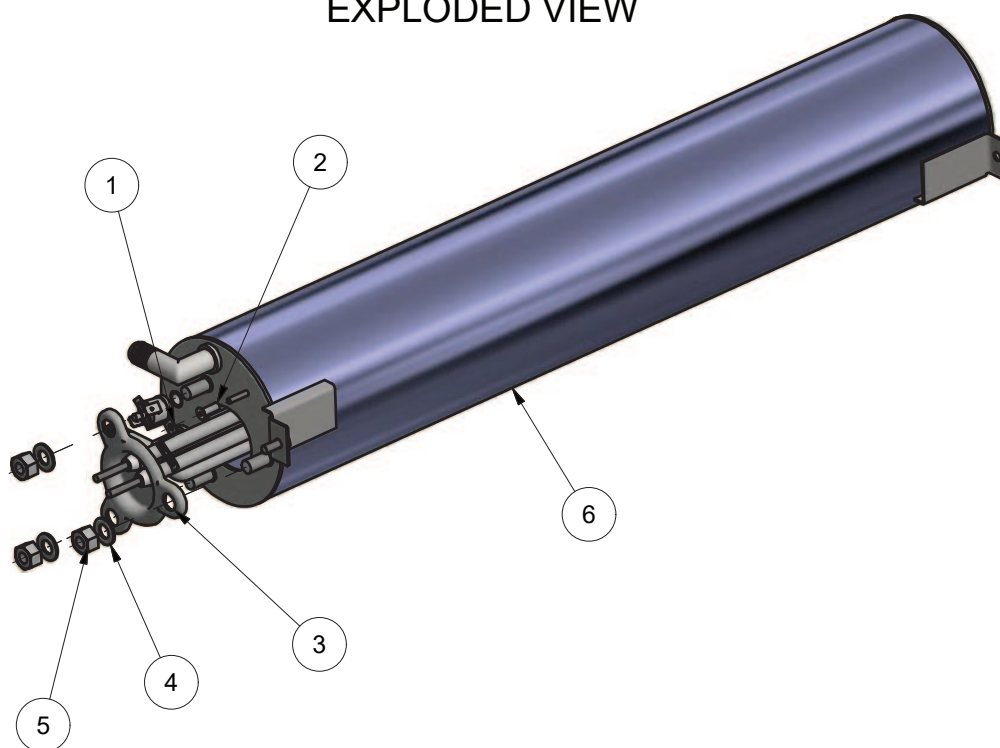


Parts List			
ITEM	PART NUMBER	DESCRIPTION	QTY
1	3342	SOLENOID VALVE 1 WAY	1
2	400 30373	COUPLING LOWER PIPE MACHINED 111MM LONG	1
3	400 30361	SPINDLE WASH / RINSE XU3	1
4	600 41140	WASH TEE TOP/LOWER TURRET	2
5	600 41214	NUT RING FOR FIXING TURRET	1
6	ASS05	HOSE CLAMP	10
7	400 30358	WASH & RINSE SPINDLE 133mm	1
8	ARP331	O-RING 47.35IDx54OD	2
9	400 10247	XU3/XV RINSE TANK ASSEMBLY	1
10	400 90076	SS RINSE TEE	1
11	215 20013	XU3 CHEMICAL PUMPS BRACKET	1
12	600 30324	RINSE AID INJECTOR	1
13	@600 30324	DETERGENT/RINSE AID TEE	1
14	600 60073	HOSE HOTOTAL 19 x 11 mm	1
15	30201	THERMOSTAT 1 POLE	1
16	600 41148	WASH/RINSE ARM	2

## XU3/XV RINSE TANK ASSEMBLY

400 10247 9/01/2017 REV 1-B

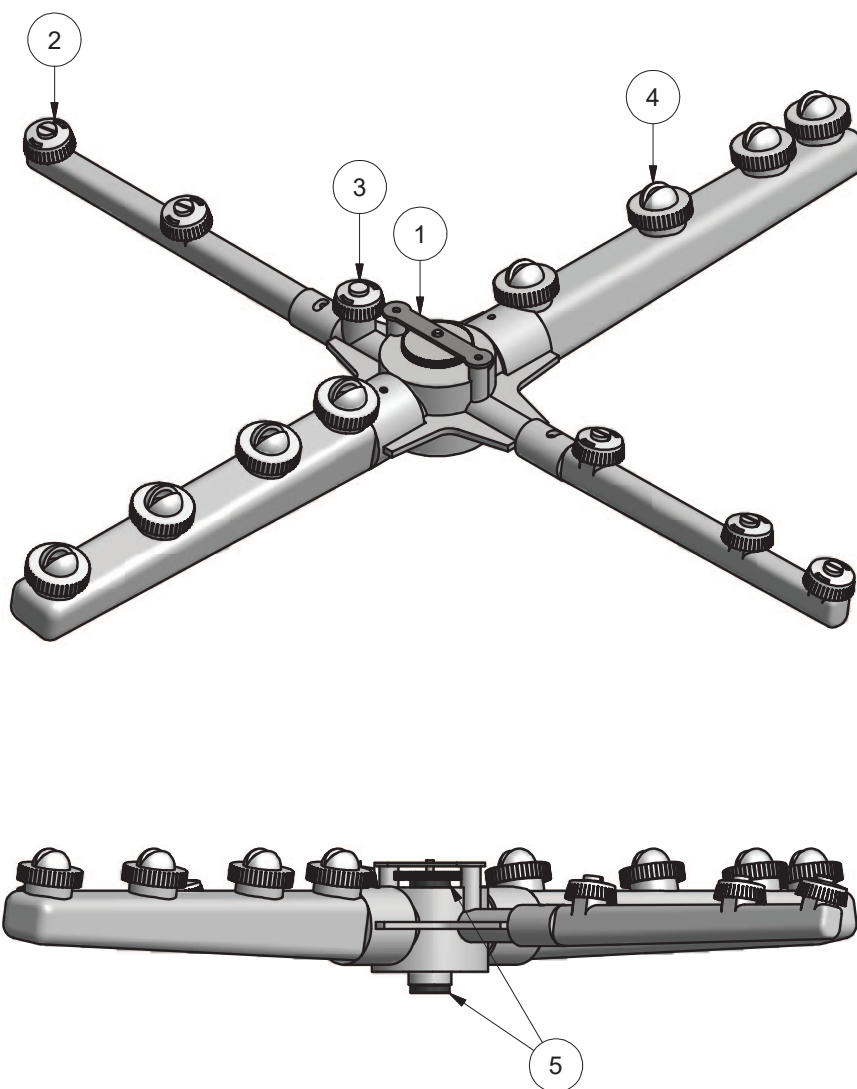
### EXPLODED VIEW



Parts List			
ITEM	PART NUMBER	DESCRIPTION	QTY
1	600 30088	TSTAT TY60/R-110C [WITH E BKT]	1
2	600 80064	STANDOFF M3 x 12	1
3	600 30495	Element 3kW Single Blade Rinse	1
4	600 80022	WASHER FL SS 304 M8x16x1.2mm	3
5	600 80063	NUT NYLOC SS M8	3
6	400 10328	RINSE TANK XU3/XV/GLV7 SS 550MM SUB ASSEMBLY V3 C/W STUDS	1

# WASH/RINSE ARM ASSEMBLY

600 41148 20/04/2015 REV 1-C

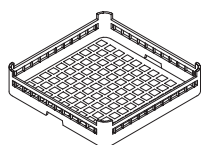


Parts List			
ITEM	PART NUMBER	DESCRIPTION	QTY
1	600 41191	THUMB SCREW RETAINING PLATE	1
2	600 40049	JET GM5 RINSE	5
3	600 40050	JET GM5 BLIND RINSE	1
4	600 40046	JET GM5 WASH	8
5	600 40064	WASH/RINSE ARM BUSH	2

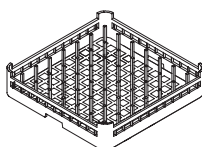
# Accessories

## WASHTECH XV ACCESSORIES

XV ACS 26/06/17 1B



**600 70080**  
**CUPRACK 450mm PLASTIC**



**600 70081**  
**DISHRACK 450mm PLASTIC**



**C660503**  
**CUTLERY CONTAINER G**



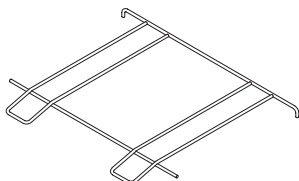
**600 60080**  
**HOSE SS 2M**



**C440201**  
**RUBBER FOOT D.60 X 10**



**600 41209**  
**FILTER**



**216 10031**  
**RACK ADAPTOR**



Information supplied in this manual is copyright.  
No part of this work may be reproduced or copied  
in any form or by any means, electronic or  
mechanical without the express permission of the  
author/publisher

Distributed in Australia by Moffat Pty Limited



740 Springvale Road  
Mulgrave 3170  
Victoria  
Australia



SPARES  
WEBSTORE

[spares.moffat.com.au](http://spares.moffat.com.au)



1300 263 107



[sparesinfo@moffat.com.au](mailto:sparesinfo@moffat.com.au)

#### ISO9001

All Washtech products are designed and  
manufactured by Washtech using the  
internationally recognised ISO9001 quality  
management system, covering design,  
manufacture and final inspection, ensuring  
consistent high quality at all times.

In line with policy to continually develop and  
improve its products, Washtech Ltd reserves the  
right to change specifications and design without  
prior notice.

an Ali Group Company



The Spirit of Excellence