

Accessories

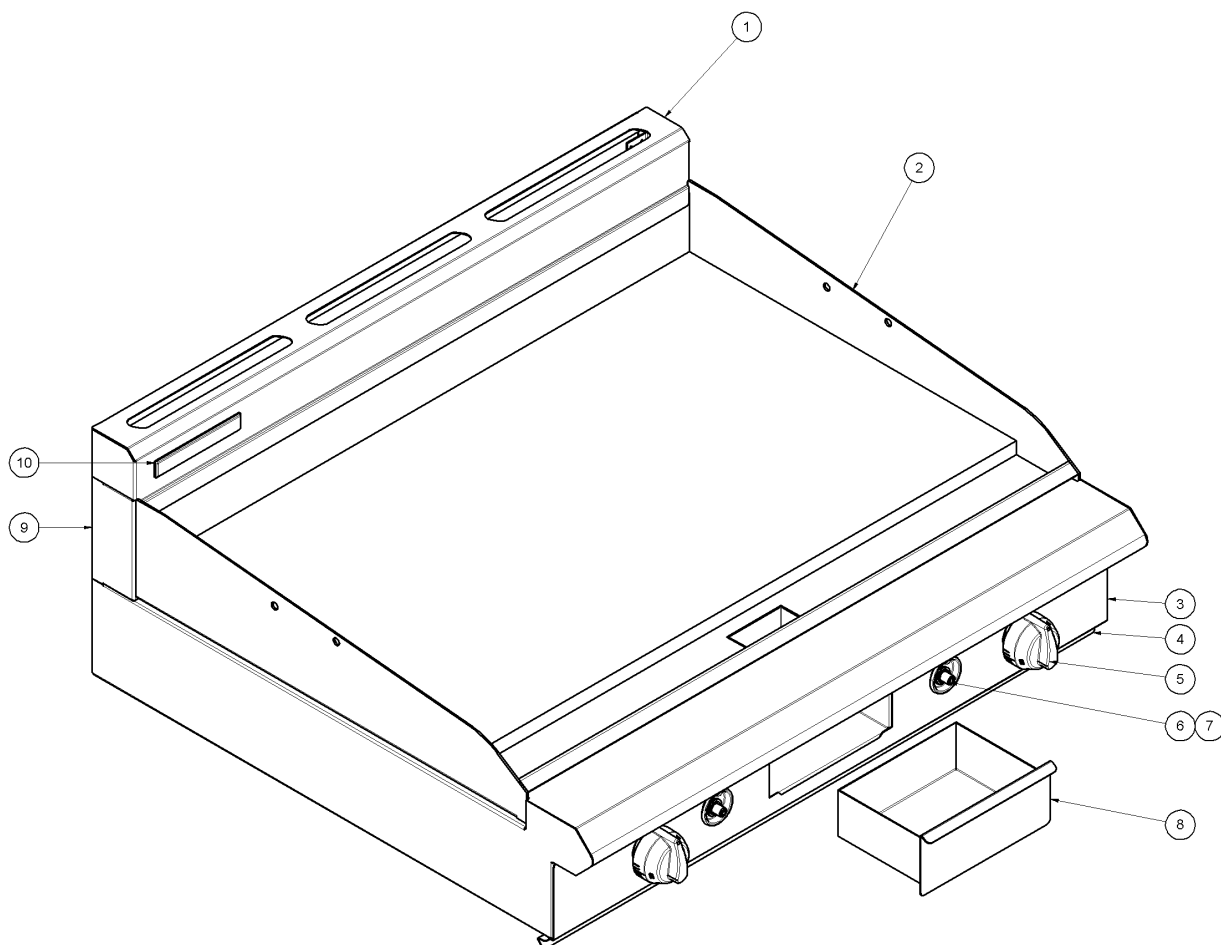
228566	Griddle Scraper Tool.	
228567	Smooth Plate Scraper Blades	(Pack of 5 blades).
228568	Ribbed Plate Scraper Blade	(Individual Blade).
228799	900 mm Plinth Kit.	

Griddle Plate	Standard	Chromed (-C)	Ribbed
900 mm	229248	229270	ON REQUEST, Various options (depending on ribbed section width on LH or RH side).

Section	Page no.
8.1 GPE506 / GPE56 900mm Griddle	30
8.1.1 Main Assembly GPE506/56.....	30
8.1.2 Gas Assembly GPE506/56.....	31
8.2 GPE508 / GPE58 1200mm Griddle	
8.2.1 Main Assembly GPE508/58.....	33
8.2.2 Gas Assembly GPE508/58.....	34
8.3 Electric Ovens	36
8.3.1 Main Assembly	36
8.3.2 Door Assembly	37
8.3.3 GPE506 / GPE508 Electrical Assembly (Static Ovens)	38
8.3.4 GPE56 / GPE58 Electrical Assembly (Convection Ovens)	39

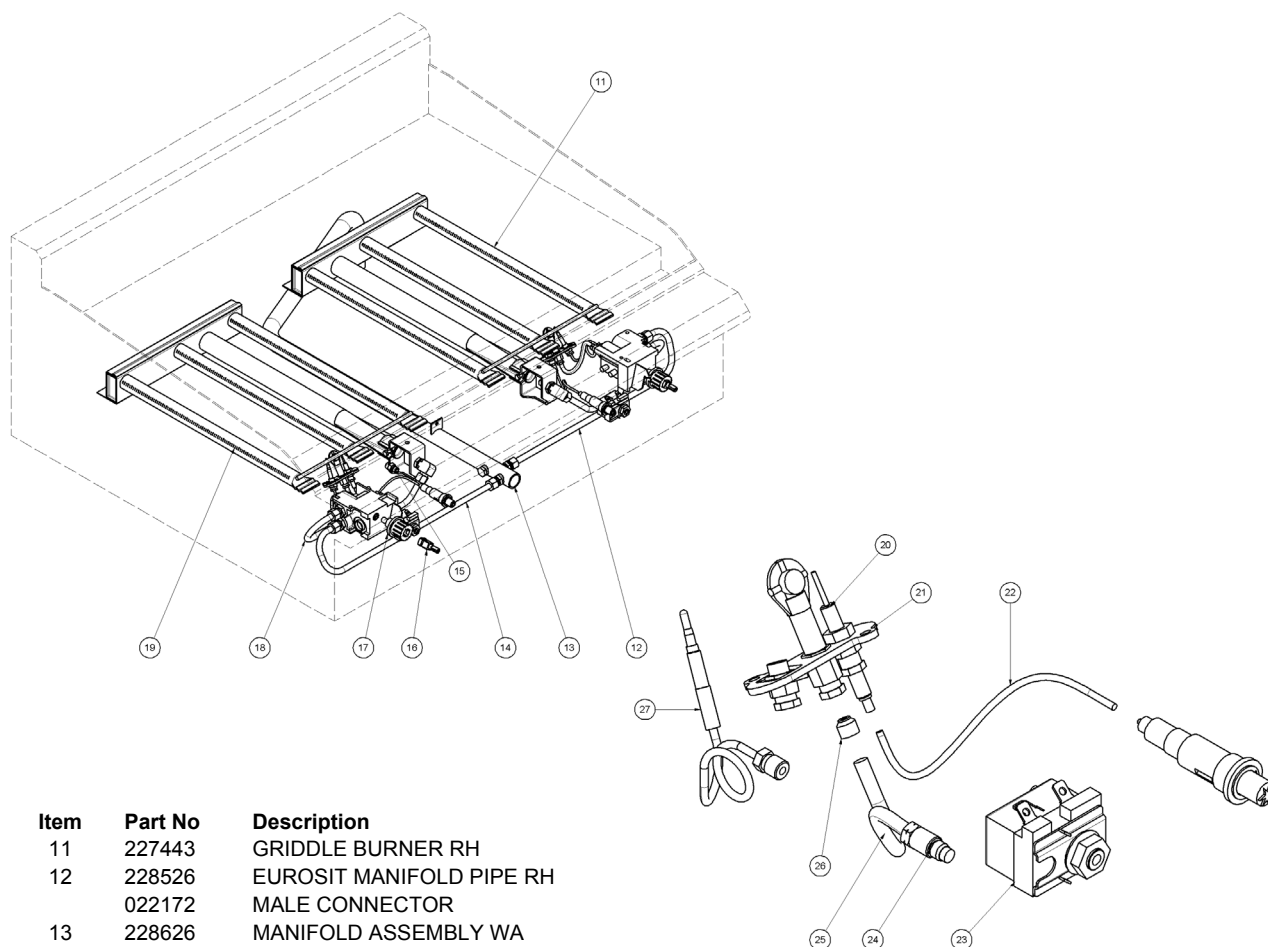
8.1 GPE506/56 900mm Griddle

8.1.1 GPE506/56 Main Assembly



Item	Part No	Description
1	228924	SPLASHBACK BLUE SEAL
2	PGH920	GRIDDLE G 900X20
	PGH920R3	GRIDDLE G 900x20 RIB300RH
	PGH920R5	GRIDDLE G 900x20 RIB450RH
	PGH920R9	GRIDDLE G 900x20 RIB900
	PGH920C	GRIDDLE G 900X20 CHROMED
	PGH920R3C	GRIDDLE G 900x20 RIB300RH CHROMED
	PGH920R9C	GRIDDLE G 900x20 RIB900 CHROMED
3	227549	CONTROL PANEL
4	227580	FRONT TRIM BLUE SEAL
5	227381	KNOB BSEAL 8MM 100-290°C
6	227508	PIEZO - SIT
7	228010	PIEZO HOUSING
8	228400	GREASE DRAWER WA
9	228173	SPLASHBACK ENDS
10	227960	BLUE SEAL BADGE

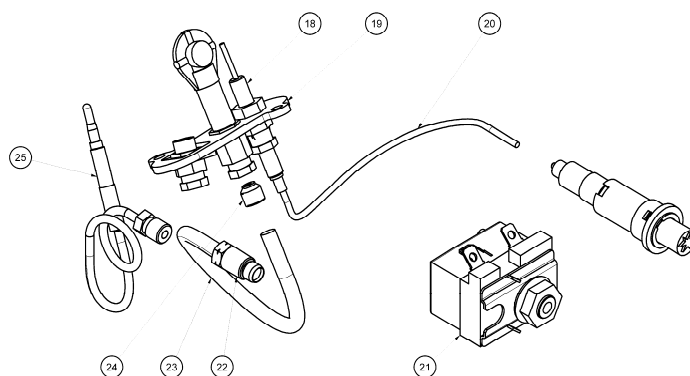
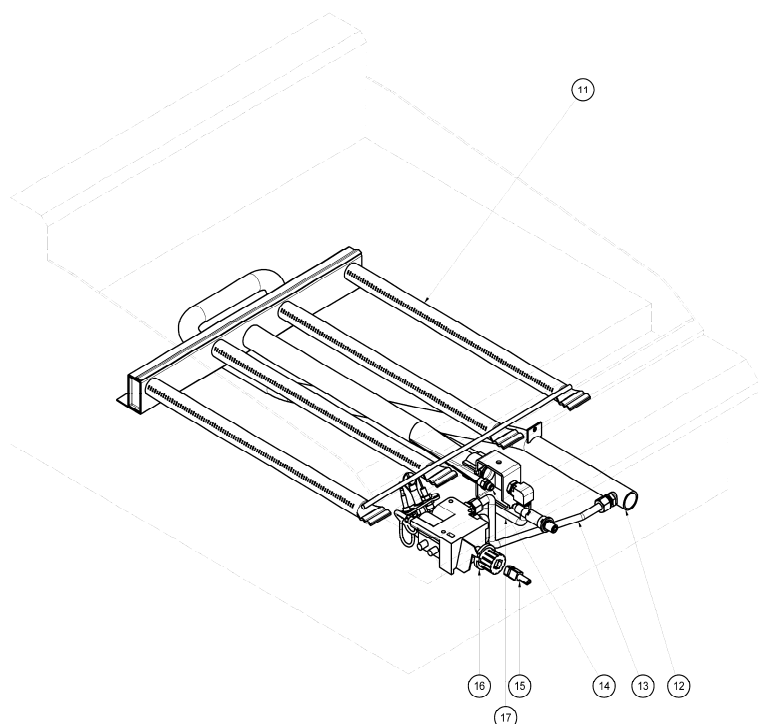
8.1.2 GPE506/56 Gas Assembly (Up to Lot # 1114999)



Item	Part No	Description
11	227443	GRIDDLE BURNER RH
12	228526	EUROSIT MANIFOLD PIPE RH
	022172	MALE CONNECTOR
13	228626	MANIFOLD ASSEMBLY WA
	011148	PLUG
14	228522	EUROSIT MANIFOLD PIPE LH
15	032300	INJECTOR 3.00 mm (NAT GAS)
	032180	INJECTOR 1.80 mm (LPG / PROPANE)
	032165	INJECTOR 1.65 mm (BUTANE)
	032550	INJECTOR 5.50 mm (TOWN GAS)
16	228393	EUROSIT KNOB ADAPTOR
17	230416	EUROSIT GAS THERMOSTAT KIT
	021288	MALE CONNECTOR ASSY
18	228541	BURNER SUPPLY TUBE LH
	015152	NUT
	015153	OLIVE
19	228041	GRIDDLE BURNER LH
20	019624	ELECTRODE
21	232229	PILOT BURNER KIT
	017805	NUT
	017806	OLIVE
	018741	CLAMP NUT
22	228047	HT LEAD 250mm
	229731	HT LEAD 250mm RING TERMINAL (from serial# 472383)
23	229407	GRIDDLE OVERTEMP 365° (UK MODELS ONLY)
24	018097	PILOT SIT 100 SERIES OLIVE NUT 16mm
25	230319	FLEXTUBE 12"x1/4 OD ST/ST
26	019593	PILOT INJECTOR 0.41mm (NAT GAS)
	019594	PILOT INJECTOR 0.25mm (LPG / PROPANE)
	026393	PILOT INJECTOR 0.75mm (TOWN GAS)
27	019218	THERMOCOUPLE 450MM (NON- UK MODELS)
	236265	THERMOCOUPLE INT LEADED (UK MODELS ONLY)
	228531	REGULATOR (Natural Gas /LPG Gas [Propane-Convertible]3/4"BSP F/F,

8 Exploded Parts Diagrams

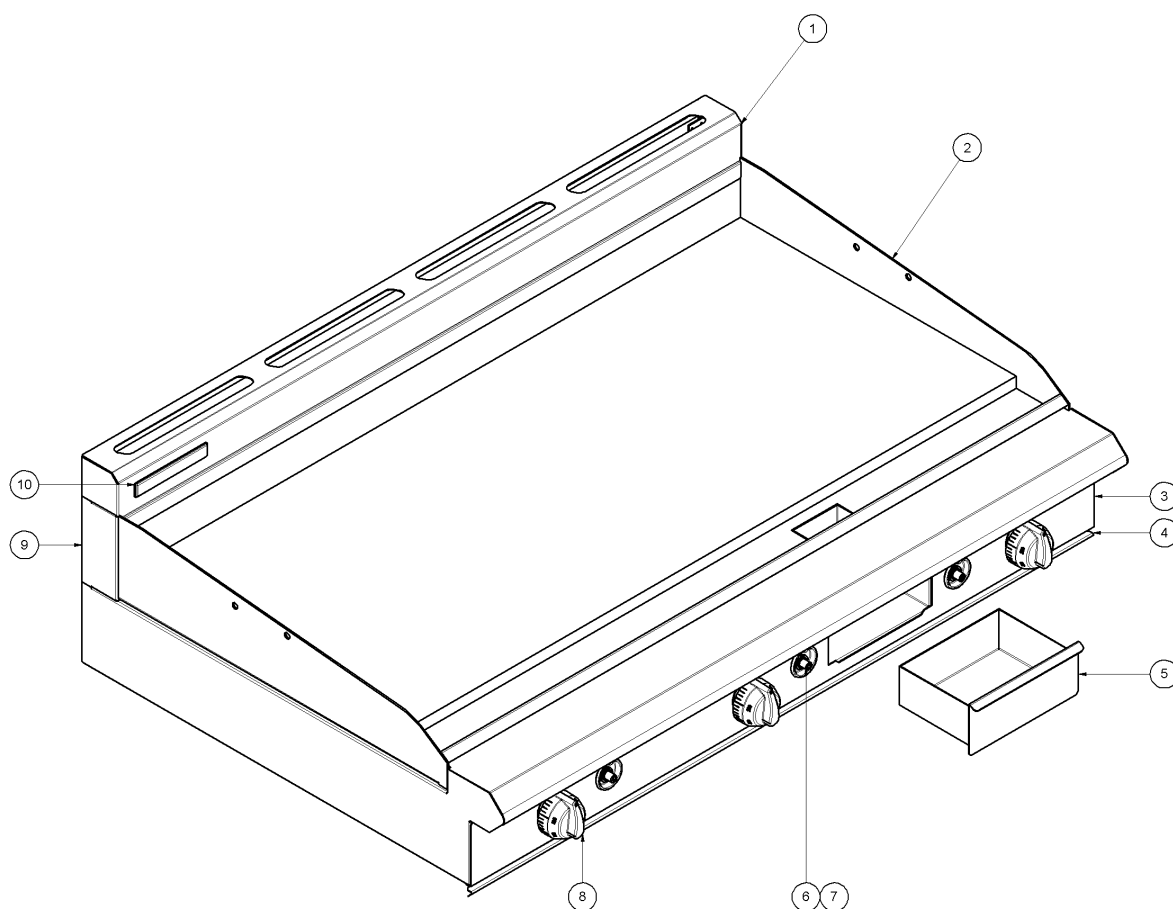
8.1.2 GPE506/56 Gas Assembly (From Lot # 1115000)



Item	Part No	Description
11	227444	GRIDDLE BURNER
12	228625	SUPPLY PIPE
	022172	MALE CONNECTOR COMPLETE
	015152	NUT
	015153	OLIVE
13	024156	FLEXTUBE DORMONT T6x12
14	032360	INJECTOR 3.60mm (NAT GAS)
	032340	INJECTOR 3.40mm (UK NAT GAS)
	032210	INJECTOR 2.10mm (LPG/PROPANE)
	032195	INJECTOR 1.95mm (BUTANE)
	038720	INJECTOR 7.20mm (TOWN GAS)
	229511	INJECTOR ELBOW
15	228393	EUROSIT KNOB ADAPTOR
16	230416	EUROSIT GAS THERMOSTAT KIT
17	024156	FLEXTUBE DORMONT T6X12
18	019624	ELECTRODE
19	232229	PILOT BURNER KIT
	018741	CLAMP NUT
	017805	NUT
	017806	OLIVE
20	228047	HT LEAD 250mm
	229731	HT LEAD 250mm RING TERMINAL (from serial# 472383)
21	229407	GRIDDLE OVERTEMP 365° (UK MODELS ONLY)
22	018097	PILOT SIT 100 SERIES OLIVE NUT 16mm
23	230319	FLEXTUBE 12"x1/4 OD ST/ST
24	019593	PILOT INJECTOR 0.41mm (NAT GAS)
	019594	PILOT INJECTOR 0.25mm (LPG / PROPANE)
	026393	PILOT INJECTOR 0.75mm (TOWN GAS)
25	019218	THERMOCOUPLE 450MM (NON- UK MODELS)
	236265	THERMOCOUPLE INT LEADED (UK MODELS ONLY)
	228531	REGULATOR (Natural Gas /LPG Gas [Propane-Convertible]3/4"BSP F/F,

8.2 GPE508/58 1200mm Griddle

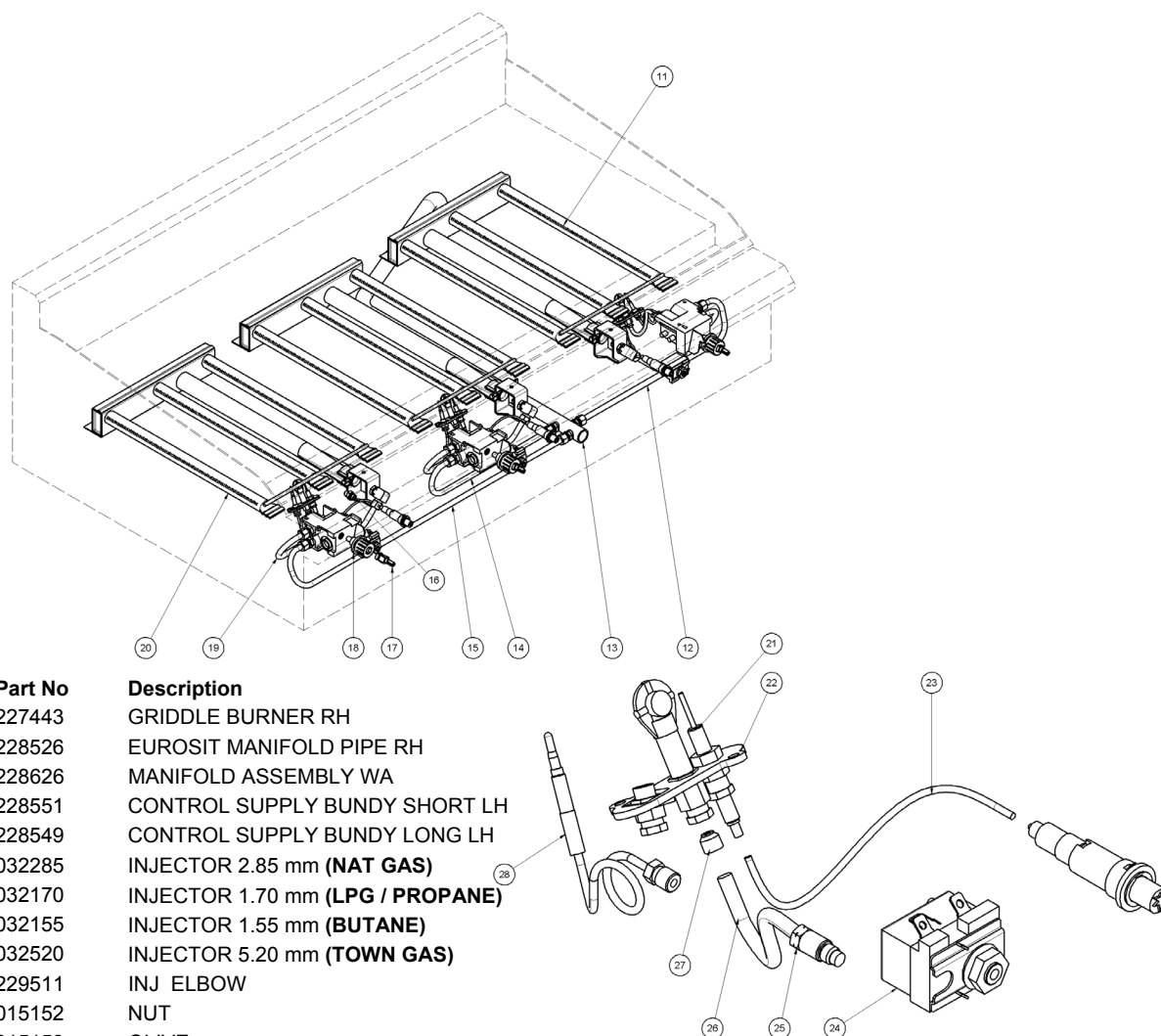
8.2.1 GPE508/58 Main Assembly



Item	Part No	Description
1	228925	SPLASHBACK 1200 BLUE SEAL WA
2	PGH1220	GRIDDLE G 1200X20
	PGH1220R4	GRIDDLE G 1200x20 RIB400RH
	PGH1220R6	GRIDDLE G 1200x20 RIB600RH
	PGH1220R12	GRIDDLE G 1200x20 RIB1200
	PGH1220C	GRIDDLE G 1200X20 CHROMED
	PGH1220R4C	GRIDDLE G 1200x20 RIB400RH CHROMED
3	227548	CONTROL PANEL
4	227581	FRONT TRIM BLUE SEAL
5	228400	GREASE DRAWER WA
6	227508	PIEZO - SIT
7	228010	PIEZO HOUSING
8	227381	KNOB BSEAL 8MM 100-290°C
9	228173	SPLASHBACK ENDS
10	227960	BLUE SEAL BADGE

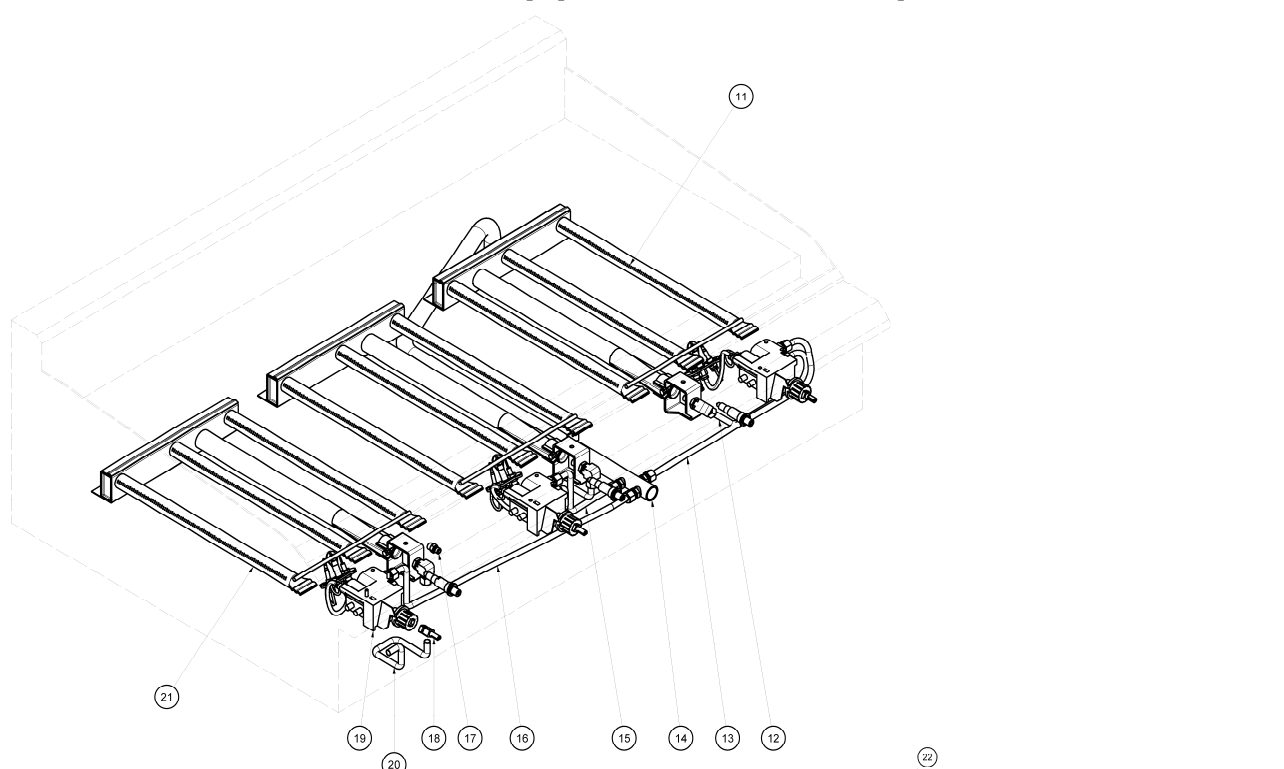
8 Exploded Parts Diagrams

8.2.2 GPE508/58 Gas Assembly (Up to Lot # 1114999)

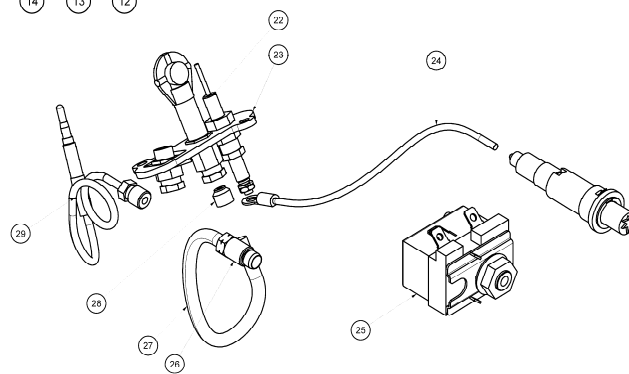


Item	Part No	Description
11	227443	GRIDDLE BURNER RH
12	228526	EUROSIT MANIFOLD PIPE RH
13	228626	MANIFOLD ASSEMBLY WA
14	228551	CONTROL SUPPLY BUNDY SHORT LH
15	228549	CONTROL SUPPLY BUNDY LONG LH
16	032285	INJECTOR 2.85 mm (NAT GAS)
	032170	INJECTOR 1.70 mm (LPG / PROPANE)
	032155	INJECTOR 1.55 mm (BUTANE)
	032520	INJECTOR 5.20 mm (TOWN GAS)
	229511	INJ ELBOW
	015152	NUT
	015153	OLIVE
17	228393	EUROSIT KNOB ADAPTOR
18	230416	EUROSIT GAS THERMOSTAT KIT
	021288	MALE CONNECTOR ASSY
	015152	NUT
	015153	OLIVE
19	024156	FLEXTUBE DORMONT T6X12
20	228041	GRIDDLE BURNER LH
21	019624	ELECTRODE
22	232229	PILOT BURNER KIT
	018741	CLAMP NUT
	017805	NUT
	017806	OLIVE
23	228047	HT LEAD 250mm
	229731	HT LEAD 250mm RING TERMINAL (from serial# 472383)
24	229407	GRIDDLE OVERTEMP 365° (UK MODELS ONLY)
25	018097	PILOT SIT 100 SERIES OLIVE NUT 16mm
26	230319	FLEXTUBE 12"x1/4 OD ST/ST
27	019593	PILOT INJECTOR 0.41mm (NAT GAS)
	019594	PILOT INJECTOR 0.25mm (LPG / PROPANE)
	026393	PILOT INJECTOR 0.75mm (TOWN GAS)
28	019216	THERMOCOUPLE 450MM (NON -UK MODELS)
	236265	THERMOCOUPLE INTERRUPTED (UK MODELS ONLY)
	228531	REGULATOR (Natural Gas /LPG Gas [Propane-Convertible]3/4"BSP F/F,

8.2.2 GPE508/58 Gas Assembly (From Lot # 1115000)



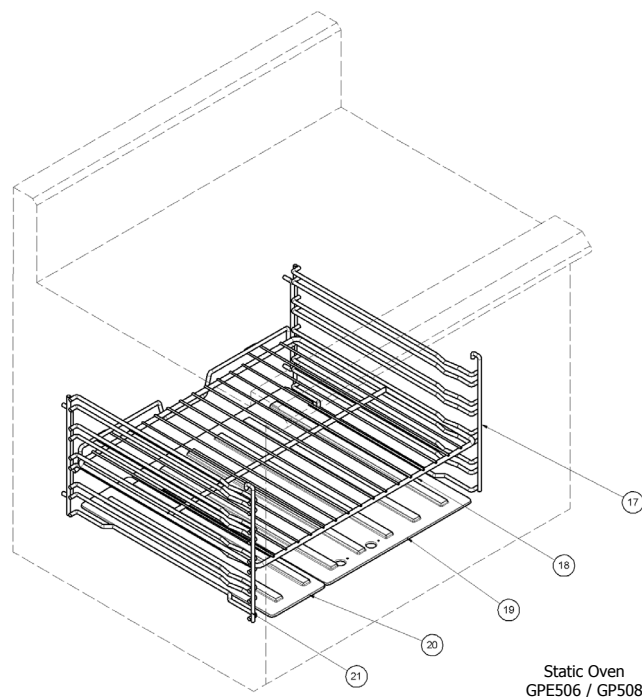
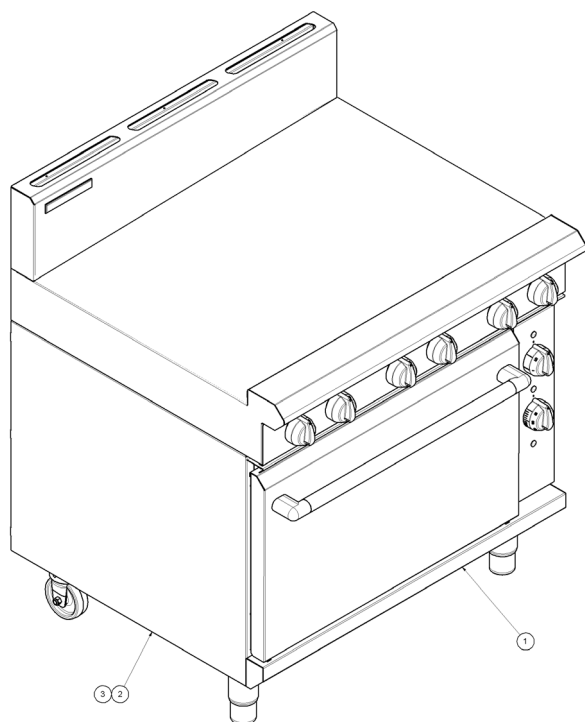
Item	Part No	Description
11	227443	GRIDDLE BURNER RH
12	024156	FLEXTUBE DORMONT T6x12
13	235417	FLEXTUBE DORMONT T6x24
14	228626	MANIFOLD ASSEMBLY WA
15	024156	FLEXTUBE DORMONT T6x12
16	235417	FLEXTUBE DORMONT T6x24
17	032285	INJECTOR 2.85 mm (NAT GAS)
	032170	INJECTOR 1.70 mm (LPG / PROPANE)
	032155	INJECTOR 1.55 mm (BUTANE)
	032520	INJECTOR 5.20 mm (TOWN GAS)
	229511	INJ ELBOW
	015152	NUT
	015153	OLIVE
18	228393	EUROSIT KNOB ADAPTOR
19	230416	EUROSIT GAS THERMOSTAT KIT
20	024156	FLEXTUBE DORMONT T6X12
21	228041	GRIDDLE BURNER LH
22	019624	ELECTRODE
23	232229	PILOT BURNER KIT
	018741	CLAMP NUT
	017805	NUT
	017806	OLIVE
24	228047	HT LEAD 250mm
	229731	HT LEAD 250mm RING TERMINAL (from serial# 472383)
25	229407	GRIDDLE OVERTEMP 365° (UK MODELS ONLY)
26	018097	PILOT SIT 100 SERIES OLIVE NUT 16mm
27	230319	FLEXTUBE 12"x1/4 OD ST/ST
28	019593	PILOT INJECTOR 0.41mm (NAT GAS)
	019594	PILOT INJECTOR 0.25mm (LPG / PROPANE)
	026393	PILOT INJECTOR 0.75mm (TOWN GAS)
29	019218	THERMOCOUPLE 450MM (NON—UK MODELS)
	236265	THERMOCOUPLE INTERRUPTED (UK MODELS ONLY)
	228531	REGULATOR (Natural Gas /LPG Gas [Propane-Convertible])3/4"BSP F/F,



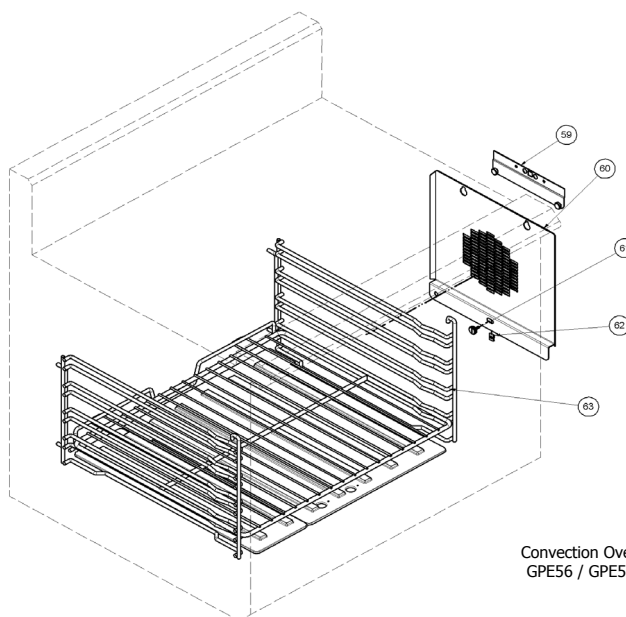
8 Exploded Parts Diagrams

8.3 Electric Ovens

8.3.1 Main Assembly



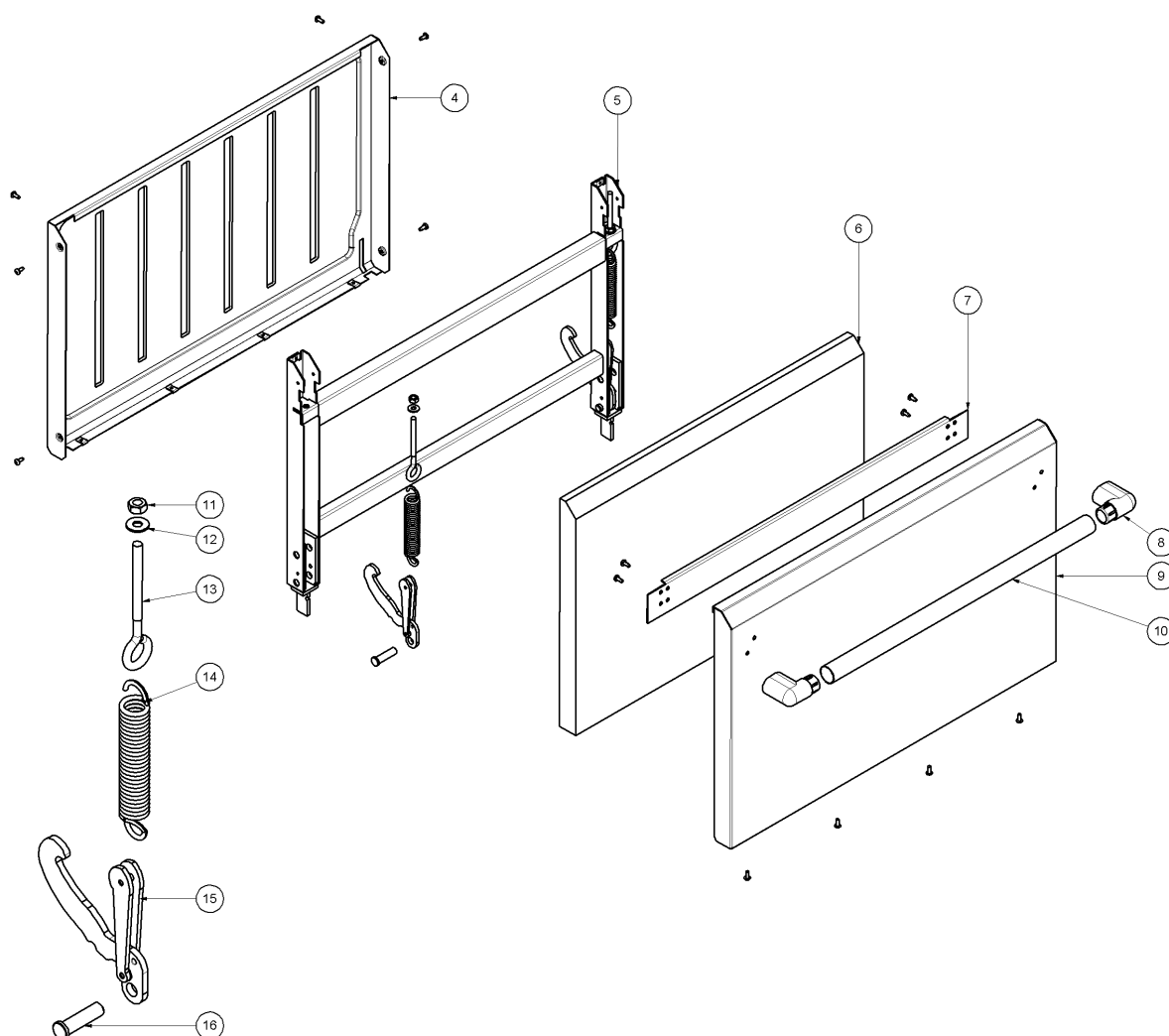
Static Oven
GPE506 / GP508



Convection Oven
GPE56 / GPE58

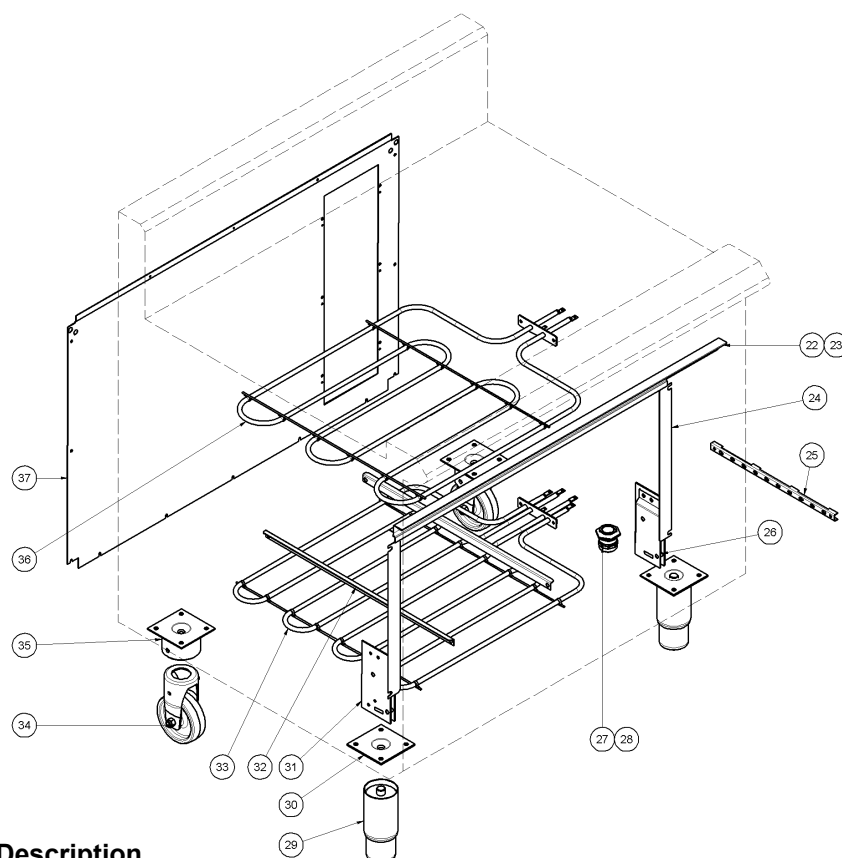
Item	Part No	Description
1	229733	SILL WA 900 BLUE SEAL
	229892	SILL WA 1200 BLUE SEAL
2	228078	SIDE PANEL LH
3	228401	SIDE PANEL RH
17	227893	OVEN SIDE RACK RH (GPE506 / GPE508)
	228966	OVEN SIDE RACK/FAN GUARD (GPE56 / GPE58)
18	227896	OVEN RACK
19	228052	OVEN SOLE PLATE
20	228054	OVEN SOLE PLATE EXTENSION
21	227892	OVEN SIDE RACK LH
59	232589	BAFFLE TOP SUPPORT WA (From lot number 0817xxx)
60	232537	FAN BAFFLE - ELEC CONVECTION (From Lot number 0817xxx)
61	23068	SIDE RACK SCREW (From lot number 0817xxx)
62	44205	NUT SNU 0530 SPIRE ST (From lot number 0817xxx)
63	227893	OVEN SIDE RACK RH (From lot number 0817xxx)
	232355	OVEN BAFFLE UPGRADE KIT (From lot number 0817xxx)

8.3.2 Door Assembly (All)

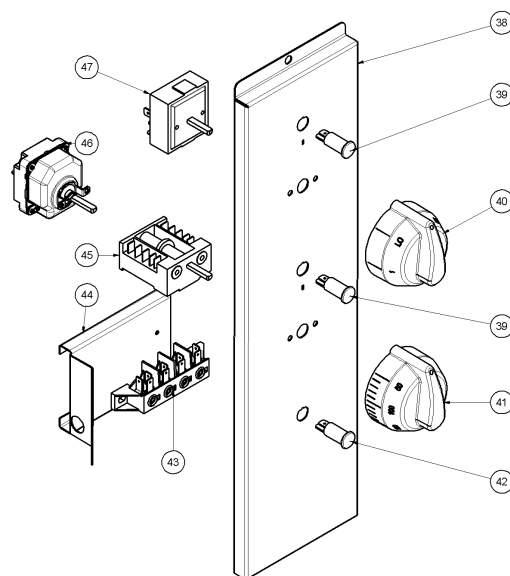


Item	Part No	Description
4	227949	OVEN DOOR INNER (To Lot No 0837999)
	232812	OVEN DOOR INNER (From Lot No 0838000)
5	228042	DOOR FRAME (To Lot No 0837999)
	232813	DOOR FRAME (From Lot No 0838000)
6	228637	F/GLASS 670 x 460 x 38
7	228307	HANDLE STIFFENER
8	237414	DOOR HANDLE SERVICE KIT (Includes 2 End Caps)
9	229732	OVEN DOOR OUTER (To Lot No 0837999)
	232840	OVEN DOOR OUTER (From Lot No 0838000)
10	228021	DOOR HANDLE TUBE (To Lot No 0837999)
	232547	DOOR HANDLE TUBE (From Lot No 0838000)
11	044055	NUT M8 HEX MACHINE ZP
12	045030	WASHER 5/16 x 3/4 FLAT ZP
13	228481	DOOR EYEBOLT M8 x 125mm
14	228704	DOOR SPRING KIT (INCLUDES 2 SPRINGS)
15	232402	DOOR HINGE KIT (INCLUDES 2 x ITEMS 15 & 16)
16	-----	PART OF 15 ABOVE
	232819	COMPLETE DOOR ASSEMBLY 900mm

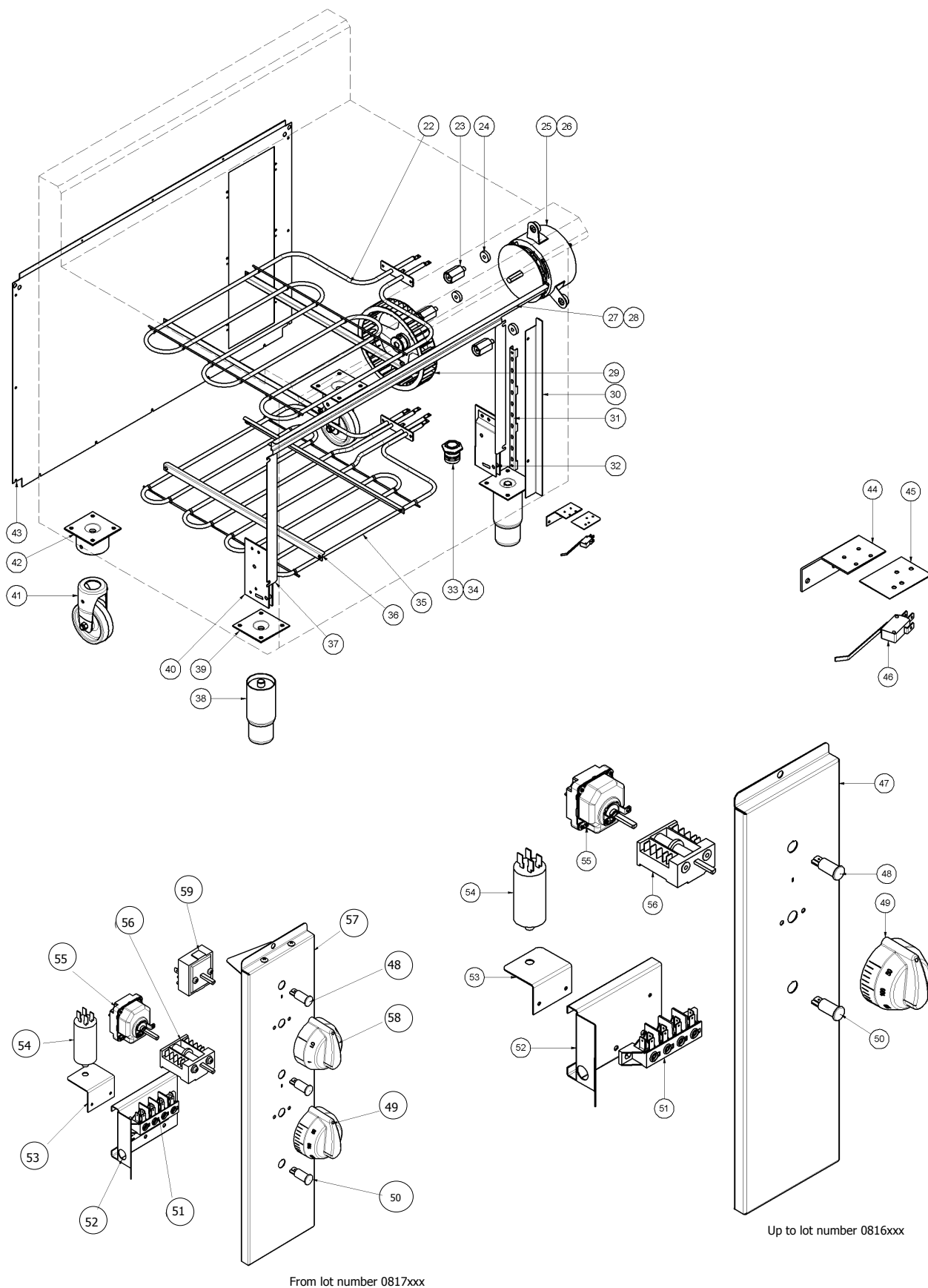
8.3.3 GPE506 / 508 Electrical Assembly (Static Oven)



Item	Part No	Description
22	230309	TOP TRIM
23	228505	DOOR TOP SEAL
24	228885	DOOR SIDE SEAL
25	017961	PHIAL GUARD
26	228031	DOOR HINGE MOUNTING RH
27	229433	CABLE GLAND 32mm METAL
28	229516	LOCKNUT 32mm
29	227850	LEG 150mm x Ø63.5
30	227852	LEG PLATE
31	228024	DOOR HINGE MOUNTING LH
32	228733	ELEMENT SUPPORT ANGLE
33	228059	BOTTOM ELEMENT
34	229674	REAR ROLLER ASSEMBLY
35	229671	LEG RING PLATE THREADED
36	228082	TOP ELEMENT
37	227104	BACK PANEL 900mm
	227177	BACK PANEL 1200mm
38	228243	CONTROL PANEL
39	227963	NEON ORANGE
40	227391	KNOB BLUE SEAL 6mm HI-4-3-2-1-LO
41	227392	KNOB BLUE SEAL 6mm 320-50°C
42	228922	NEON WHITE
43	229021	TERMINAL BLOCK
44	228941	TERMINAL BLOCK BRACKET
45	229145	SWITCH EGO 42-04400-008
46	229146	THERMOSTAT 55-34054-060
47	013989	REGULATOR EGO ENERGY



8.3.4 GPE56 / GPE58 Electrical Assembly (Convection Oven)



GPE56 / GPE58 Electrical Assembly (Cont'd)

Item	Part No	Description
22	228082	TOP ELEMENT
23	013627	MOTOR MOUNTING BUSH
24	010859	MOUNTING STEPPED
25	019479K	MOTOR KIT (INCLUDES ITEMS 24, 25, 26, 54)
26	010866	COOLING DISC
27	228504	TOP TRIM
28	228505	DOOR TOP SEAL
29	228116	OVEN FAN
30	228407	CONTROL PANEL GUIDE
31	017961	PHIAL GUARD CONVECTION
32	228031	DOOR HINGE MOUNTING RH
33	229433	CABLE GLAND 32mm METAL
34	229516	LOCKNUT 32mm
35	228059	BOTTOM ELEMENT
36	228733	ELEMENT SUPPORT ANGLE
37	228885	DOOR SIDE SEAL
38	227850	LEG 150mm x Ø63.5
39	227852	LEG PLATE
40	228024	DOOR HINGE MOUNTING LH
41	229674	REAR ROLLER ASSEMBLY
42	229671	LEG RING PLATE THREADED
43	227104	BACK PANEL 900mm
	227177	BACK PANEL 1200mm
44	230071	MICROSWITCH MOUNTING BRACKET
45	230075	OVEN MICROSWITCH INSULATOR
46	228938	MICROSWITCH WORKED
47	228244	CONTROL PANEL
48	227963	NEON ORANGE
49	227392	KNOB BLUE SEAL 6mm 320-50°C
50	228922	NEON WHITE
51	229021	TERMINAL BLOCK
52	228941	TERMINAL BLOCK BRACKET
53	228486	MICROSWITCH MOUNTING BRACKET
54	010909	CAPACITOR 4µF
55	229146	THERMOSTAT 55-34054-060
56	229145	SWITCH EGO 42-04400-009
57	228243	CONTROL PANEL (From Lot number 0817xxx)
58	227398	KNOB 6mm HI-4-3-2-1-LO (From Lot number 0817xxx)
59	13989	ENERGY REGULATOR 240V 50HZ (From Lot number 0817xxx)
	232211	CONTROL PANEL DRIP GUARD KIT (Not illustrated)