

GAS CONVERSION KITS INDEX

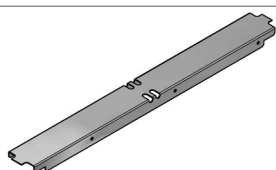
AU,NZ,XP Models Only

MODEL TYPE	CONVERT TO	CONVERSION KIT	
		STANDARD OPEN BURNERS	OPEN BURNERS WITH PILOTS
G512 GAS COOKTOP	LPG	231836	231852
	NAT	231837	231853
	BUTANE	231838	231854
	TOWNS	231839	231855
G514 GAS COOKTOP GE505/54 RANGES ELECTRIC OVEN	LPG	231840	231856
	NAT	231841	231857
	BUTANE	231842	231858
	TOWNS	231843	231859
G516 GAS COOKTOP GE506/56 RANGES ELECTRIC OVEN	LPG	231844	231860
	NAT	231845	231861
	BUTANE	231846	231862
	TOWNS	231847	231863
G518 GAS COOKTOP GE508/58 RANGES ELECTRIC OVEN	LPG	231848	231864
	NAT	231849	231865
	BUTANE	231850	231866
	TOWNS	231851	231867

UK Units Only

MODEL TYPE	CONVERT TO	CONVERSION KIT	
		OPEN BURNERS	
		Without Pilot	With Pilot
G512 COOKTOP	LPG / Propane (G31)	231868	231876
	NAT (G20)	231869	231877
G514 COOKTOP GE505/54 RANGES ELECTRIC OVEN	LPG / Propane (G31)	231870	231878
	NAT (G20)	231871	231879
G516 COOKTOP GE506/56 RANGES ELECTRIC OVEN	LPG / Propane (G31)	231872	231880
	NAT (G20)	231873	231881
G518 COOKTOP GE508/58 RANGES ELECTRIC OVEN	LPG / Propane (G31)	231874	231882
	NAT (G20)	231875	231883

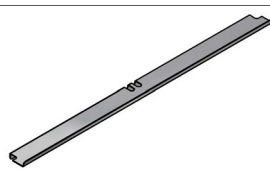
JOINING CAPS



228579

Cooktop Open Burners
To Cooktop Open Burners
To Chargrill
To Cooktop Griddle

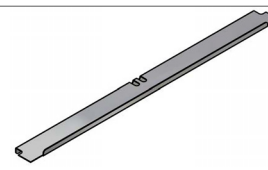
Cooktop Griddle
To Chargrill



228595

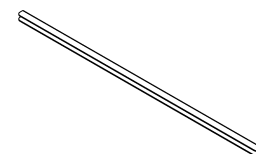
Cooktop Open Burners
To Target Top

Cooktop Griddle
To Target Top



228587

Cooktop Open Burners
To Griddle



228893

Cooktop Griddle
To Cooktop Griddle
To Griddle
To Griddle Toaster
To Cooktop Electric-Griddle

SIMMER PLATE 227016

8 Exploded Parts Diagrams

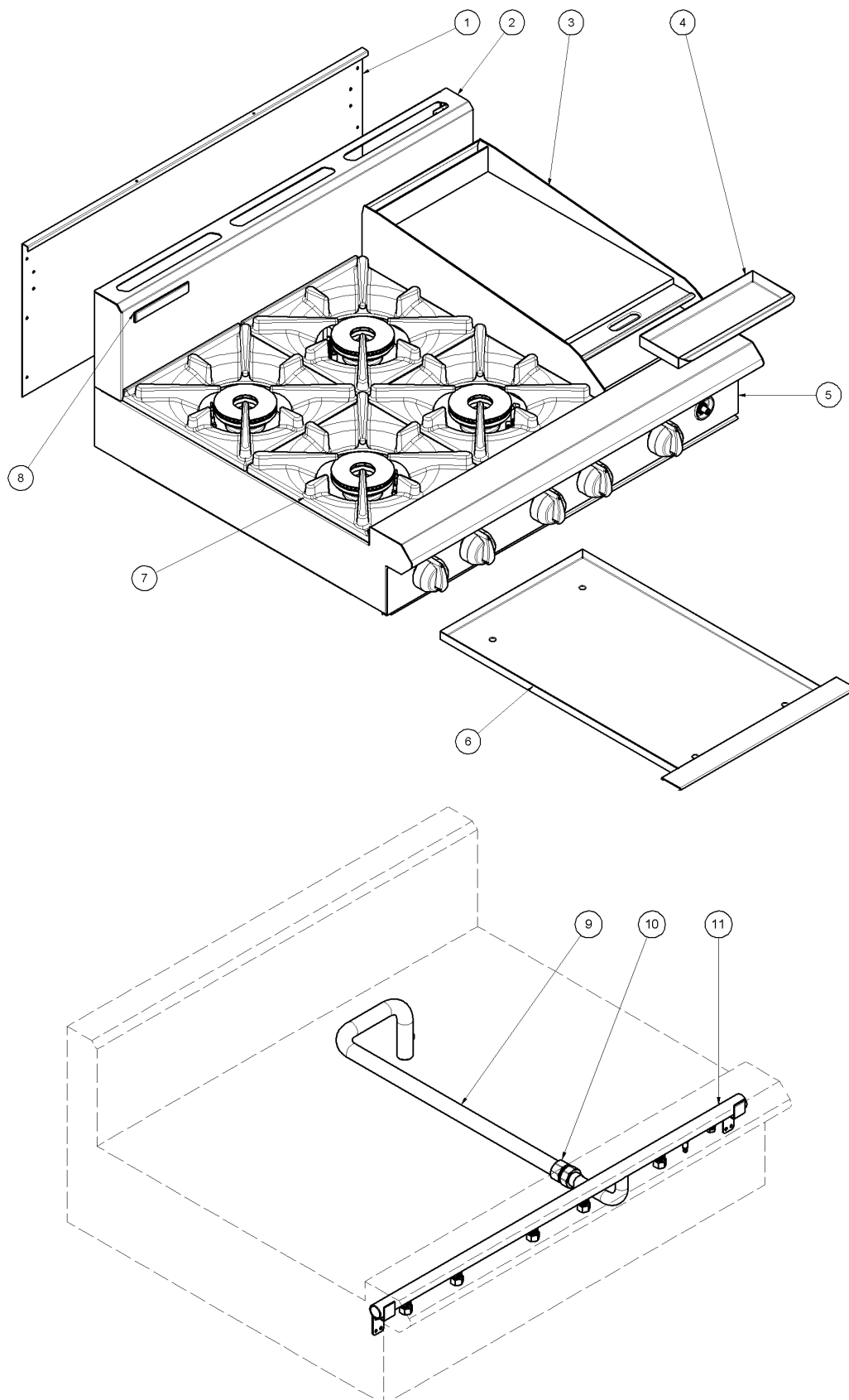
Section

Page No.

8.1	G51 Gas Cooktop	35
8.1.1	Main Assembly	35
8.1.2	Cooktop Open Burners (F Models) - up to Ser. No. 718549	37
8.1.3	Cooktop Open Burners (PF Models) - up to Ser. No. 718549	38
8.1.4	Cooktop Open Burners (F Models) - from to Ser. No. 718550	39
8.1.5	Cooktop Open Burners (PF Models) - from to Ser. No. 718550	40
8.1.6	Cooktop Griddle Burners	42
8.2	G51 Base Options	43
8.2.1	Bench Mount Base	43
8.2.2	Cabinet Base	44
8.2.3	Leg Base.....	45

8.1 G51 Gas Cooktops

8.1.1 G51 Main Assembly



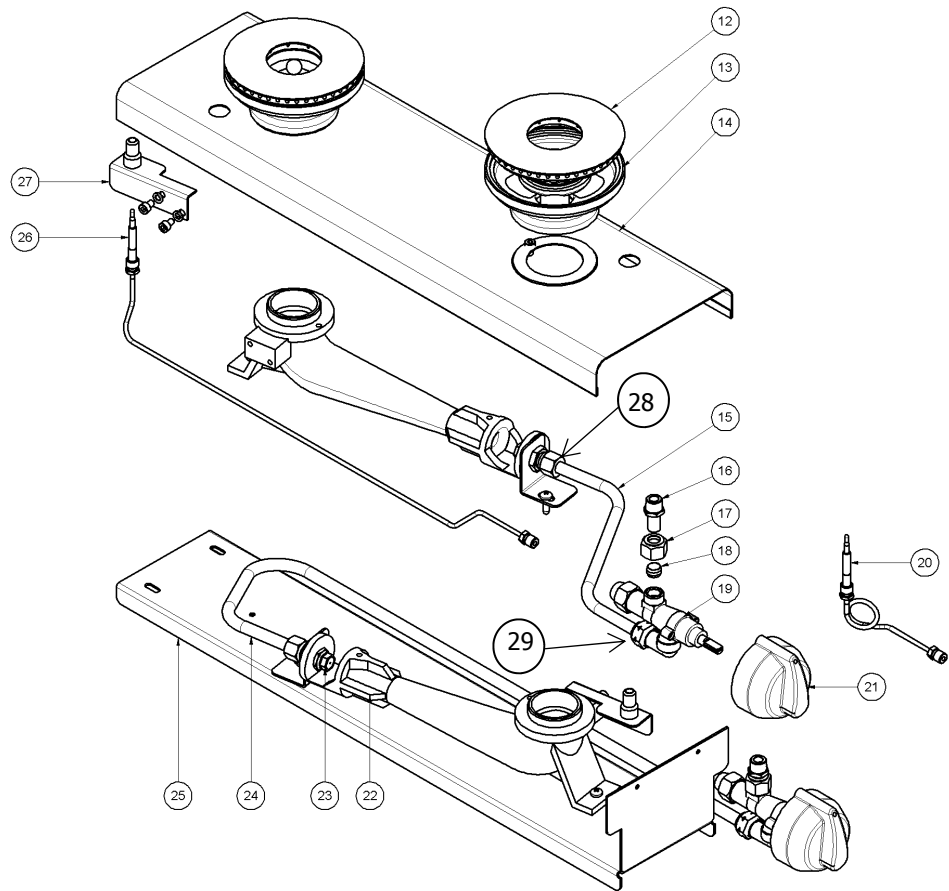
8 Exploded Parts Diagrams

8.1.1 G51 Main Assembly - Parts List (Cont'd)

ITEM	PART NO	DESCRIPTION	*RPL
1	228670	BACK PANEL 300mm	D
	227794	BACK PANEL 600mm	D
	227836	BACK PANEL 900mm	D
	228420	BACK PANEL 1200mm	D
2	228809	SPLASHBACK BSEAL 300mm	D
	228672	SPLASHBACK BSEAL 600mm	D
	228669	SPLASHBACK BSEAL 900mm	D
	228662	SPLASHBACK BSEAL 1200mm	D
3	PG312	GRIDDLE PLATE GAS 300mm WA	D
	PG612	GRIDDLE PLATE GAS 600mm WA	D
	PG912	GRIDDLE PLATE GAS 900mm WA	D
4	228288	GREASE TRAY	D
5	229360	CONTROL PANEL 300mm	D
	227538	CONTROL PANEL 600mm	D
	227537	CONTROL PANEL 900mm	D
	227236	CONTROL PANEL 1200mm	D
6	230286	SPILL TRAY 300mm WA BSEAL (G512)	D
	230273	SPILL TRAY 450mm WA BSEAL (G516 - Old Style)	D
	233515	SPILL TRAY 450mm WA BSEAL (G516 - New Style)	D
	230277	SPILL TRAY 600mm WA BSEAL (G514 and G518 - Old Style)	D
	233517	SPILL TRAY 1200mm LH, BSEAL (1 Piece New Style - G518).	D
	233518	SPILL TRAY 1200mm RH, BSEAL (1 Piece New Style - G518).	D
7	227014	POT STAND	D
8	227960	BLUE SEAL BADGE	D
9	227690	HOB - RANGE SUPPLY PIPE (G514/6/8 ONLY - G512 SEE ITEM 11)	D
10	227330	UNION BRASS CONICAL ½ X ¾ BSPT (G514/6/8 ONLY - G512 SEE ITEM 11)	D
11	228692	MANIFOLD / SUPPLY PIPE WA 300mm	D
	228692	MANIFOLD 300mm	D
	227277	MANIFOLD 600mm	D
	227278	MANIFOLD 900mm	D
	228155	MANIFOLD 1200mm	D

Recommended Parts Level	
*RPL	Number of units in service
A	1-5
B	5-10
C	10-50
D	50+

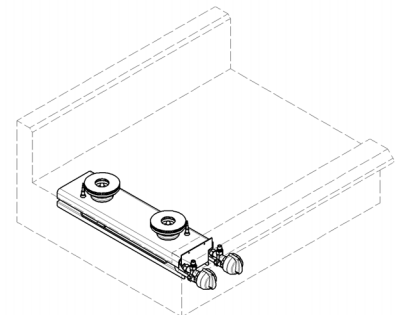
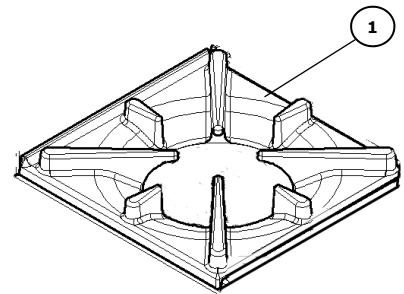
8.1.2 Cooktop Open Burners (F Models) - Up to Ser. No. 718549.



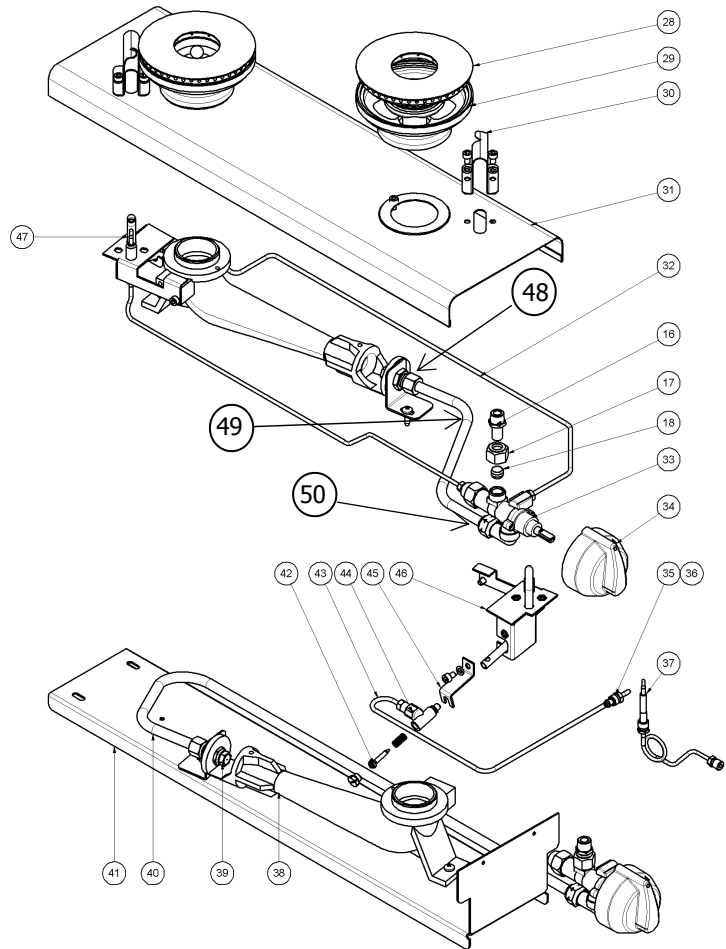
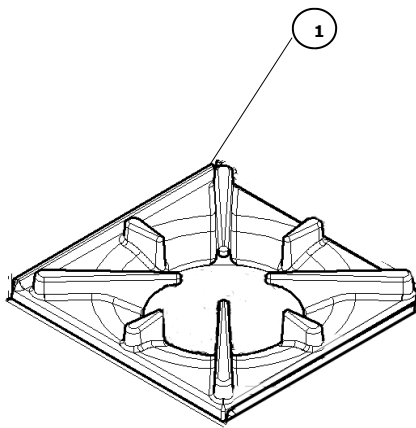
ITEM	PART NO	DESCRIPTION
1	227014	POT STAND
12	227017	BURNER CAP
13	227018	BURNER BODY
14	227455	BURNER COVER PANEL STD
15	227457	REAR BURNER SUPPLY PIPE
16	017802	INLET SPIGOT 10MM
17	017804	NUT - 10mm STEEL
18	017803	OLIVE 10mm BRASS
19	227405	GAS VALVE 20S-B CW 3-8 ELBOW
	018790	VALVE MAGNET
20	228167	THERMOCOUPLE 320mm
21	227379	KNOB BSEAL 8mm GAS STD / F
22	227019	BURNER VENTURI
23	030245	INJECTOR 2.45mm (NAT GAS)
	030230	INJECTOR 2.30mm (UK NAT GAS)
	030150	INJECTOR 1.50mm (LPG)
	030140	INJECTOR 1.40mm (UK PROPANE / BUTANE)
	032450	INJECTOR 4.50mm (TOWN GAS)
24	227456	FRONT BURNER SUPPLY TUBE
25	227132	BURNER SUPPORT
26	228166	THERMOCOUPLE 600mm
27	234601	THERMOCOUPLE SUPPORT BRKT WA
28	227375	INJECTOR CONNECTOR ASSEMBLY (INCLUDE NUT & OLIVE)
	015152	NUT 3/8"
	015153	OLIVE 3/8"
29	227560	NUT 3/8"
	227559	OLIVE 3/8"

228710 OPEN BURNER 300mm MODULE (F) KIT (Does not include Knobs or Pot Stands).

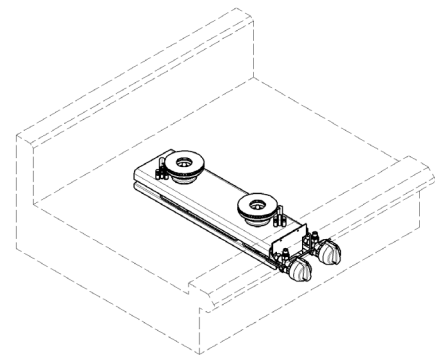
230674 OPEN BURNER 300mm MODULE (F) KIT - UK Only (Does not include Knobs or Pot Stands).



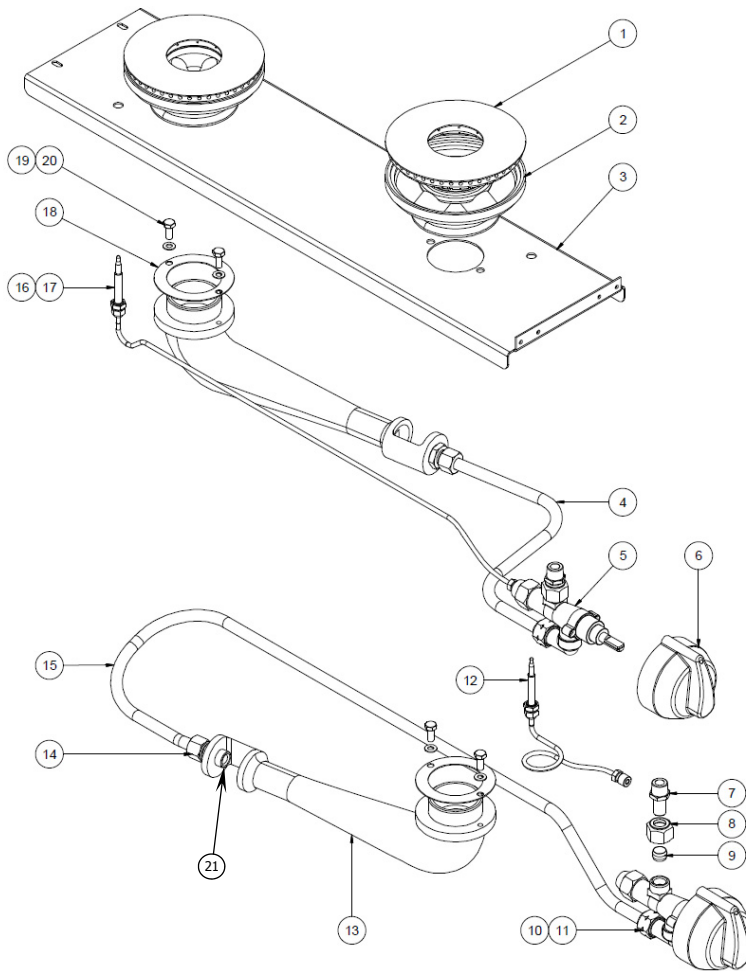
8.1.3 Cooktop Open Burners (PF Models) - Up to Ser. No. 718549.



ITEM	PART NO	DESCRIPTION
1	227014	POT STAND
16	017802	INLET SPIGOT 10mm
17	017804	NUT - 10mm STEEL
18	017803	OLIVE 10mm BRASS
28	227017	BURNER CAP
29	227018	BURNER BODY
30	229444	PILOT SHIELD
31	227454	BURNER COVER PANEL PF
32	229426	PILOT SUPPLY TUBE REAR
33	227403	GAS VALVE 21S CW 3-8 ELBOW
	018790	VALVE MAGNET
34	227378	KNOB BSEAL 8mm GAS PF
35	229424	PILOT NUT Ø4mm
36	229425	PILOT OLIVE Ø4mm
37	228167	THERMOCOUPLE 320mm
38	227019	BURNER VENTURI
39	030245	INJECTOR 2.45mm (NAT GAS)
	030230	INJECTOR 2.30mm (UK NAT GAS)
	030150	INJECTOR 1.50mm (LPG)
	030140	INJECTOR 1.40mm (UK PROPANE / BUTANE)
	032450	INJECTOR 4.50mm (TOWN GAS)
40	227456	FRONT BURNER SUPPLY TUBE
41	227132	BURNER SUPPORT
42	026134	PILOT INJECTOR SPUD Ø0.30mm (NATGAS)
	026136	PILOT INJECTOR SPUD Ø0.20mm (LPG / BUTANE)
	018067	PILOT INJECTOR SPUD Ø0.60mm (TOWN GAS)
43	229422	PILOT SUPPLY TUBE FRONT
44	229880	PILOT SIT 100 SERIES INJECTOR BASE
45	229443	PILOT INJECTOR BASE CLAMP
46	229442	PILOT BRACKET WA
47	228166	THERMOCOUPLE 600mm
48	227375	INJECTOR CONNECTOR ASSEMBLY (INCLUDES NUT & OLIVE)
	015152	NUT 3/8"
	015153	OLIVE 3/8"
49	227457	REAR BURNER SUPPLY PIPE
50	227560	NUT 3/8"
	227559	OLIVE 3/8"
	228790	OPEN BURNER 300mm MODULE (PF) KIT (Does not include Knobs or Pot Stands).
	230676	OPEN BURNER 300mm MODULE (PF) KIT - UK Only (Does not include Knobs or Pot Stands).



8.1.4 G51 Open Burners (F Models) - From Ser. No. 718550

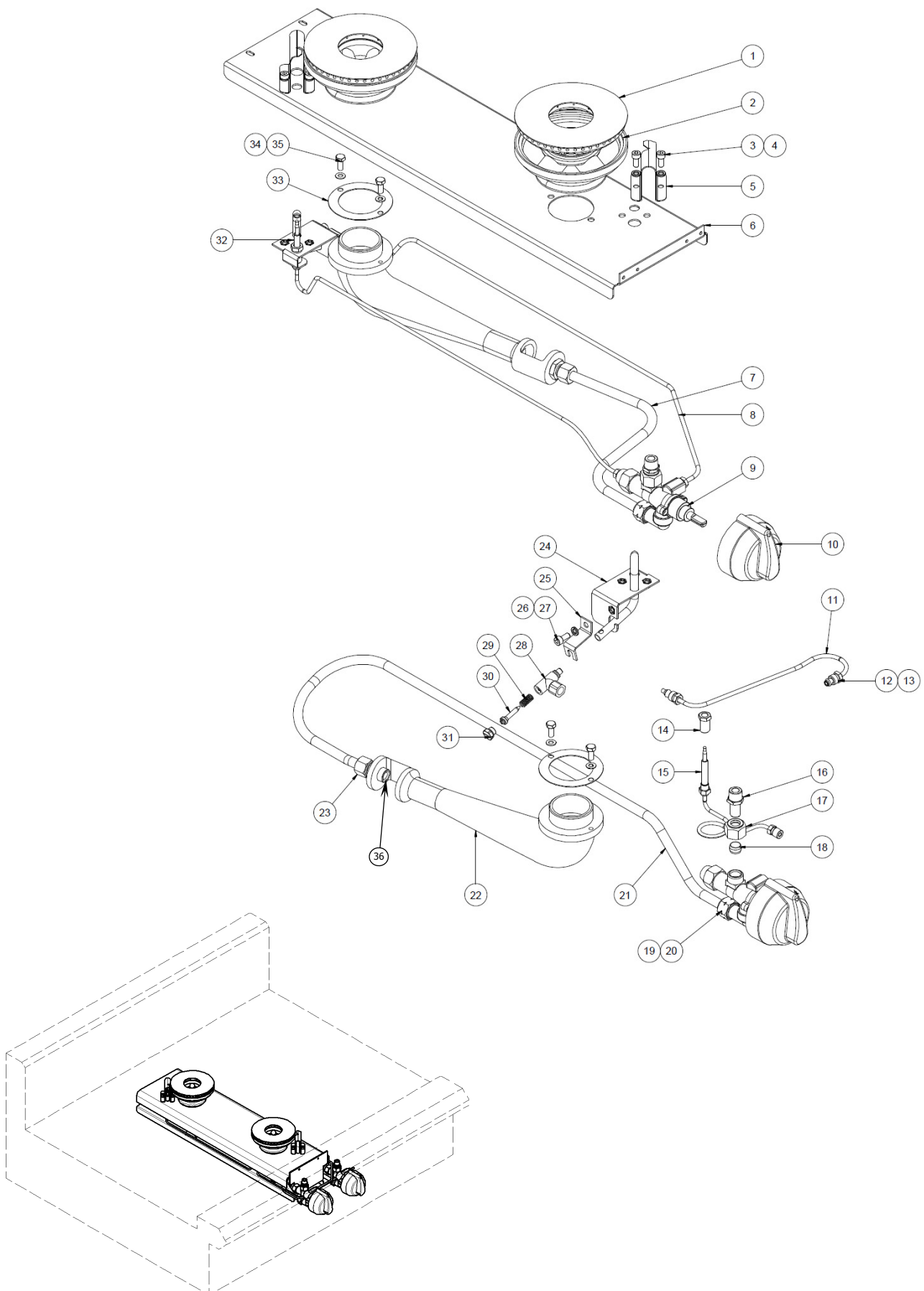


Recommended Parts Level	
*RPL	Number of Units In-Service
A	1-5
B	5-10
C	10-50
D	50+

ITEM	PART No.	DESCRIPTION	*RPL
1	227017	BURNER CAP	C
2	235678	BURNER BODY	C
3	235699	BURNER MOUNTING RAIL	D
4	024156	FLEXTUBE T6 x 12"	D
5	227405	GAS VALVE 20S-B	D
6	227379	KNOB BSEAL 8mm GAS STD / F	B
7	017802	INLET SPIGOT 10mm	C
8	017804	NUT - 10mm STEEL	A
9	017803	OLIVE 10mm BRASS	B
10	227559	OLIVE 3/8"	A
11	227560	NUT 3/8"	D
12	235711	THERMOCOUPLE 200mm M9	A
13	235679	BURNER VENTURI	D
14	227375	INJECTOR CONNECTOR	A
15	236223	FLEXTUBE T6 x 30"	D
16	024573	THERMOCOUPLE SLEEVE NUT M8 x 1	C
17	235710	THERMOCOUPLE 600mm M9	A
18	235712	OPEN BURNER VENTURI GASKET	D
19	045024	WASHER M5 SS	D
20	041421	SCREW M5 x 12 HEX HD SS	D
21	030245	INJECTOR 2.45mm (NAT GAS)	A
--	030230	INJECTOR 2.30mm (UK NAT GAS)	A
--	030150	INJECTOR 1.50mm (LPG)	A
--	030140	INJECTOR 1.40mm (UK PROPANE)	A
--	030140	INJECTOR 1.40mm (BUTANE)	A
--	030450	INJECTOR 4.50mm (TOWN GAS)	A
	236237	OPEN BURNER 300mm MODULE (PF) KIT (Does not include Knobs or Pot Stands).	
	236239	OPEN BURNER 300mm MODULE (PF) KIT - UK Only (Does not include Knobs or Pot Stands).	

8 Exploded Parts Diagrams

8.1.5 G51 Open Burners (PF Models) - From Ser. No. 718550



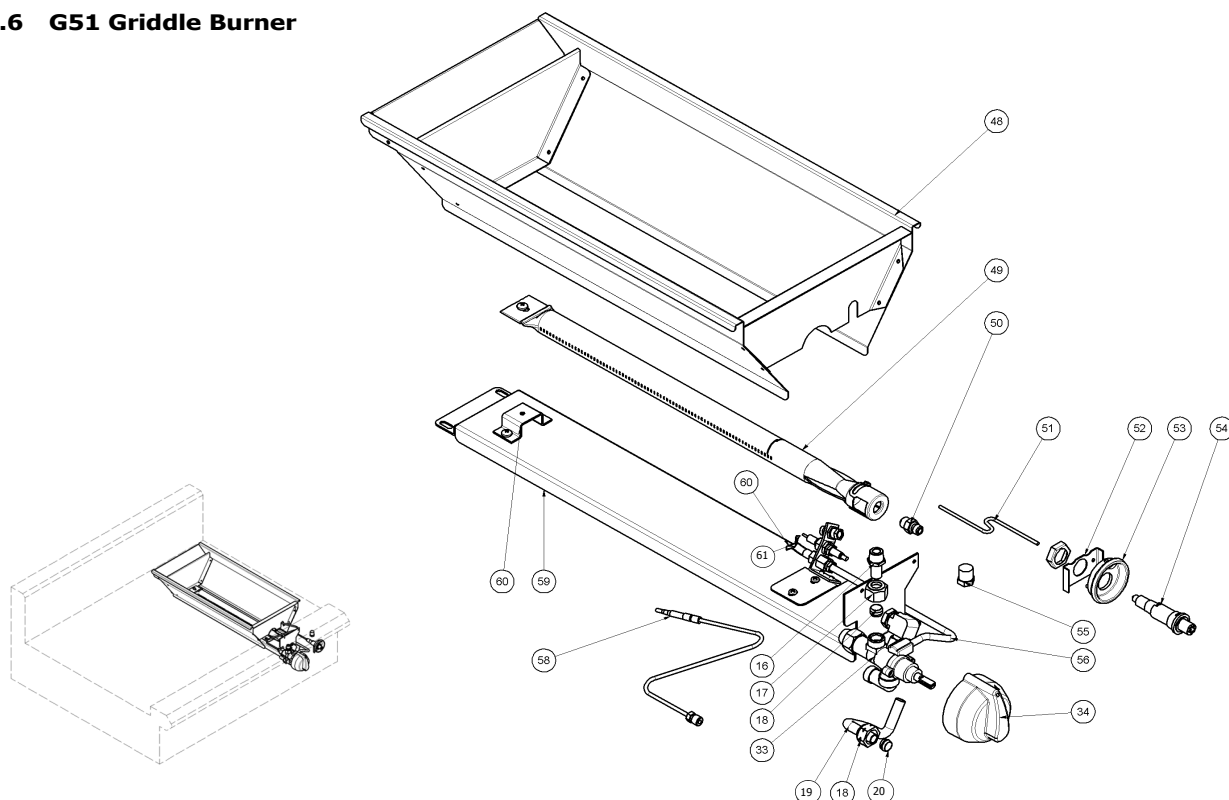
8.1.5 G51 Open Burners (PF Models) Parts List - From Ser. No. 718550 (Cont'd)

ITEM	PART No.	DESCRIPTION	*RPL
1	227017	BURNER CAP	C
2	235678	BURNER BODY	C
3	748014	SCREW M5 x 12 SKT HD CAP ST/ST	D
4	045024	WASHER M5 SS	D
5	229444	PILOT SHIELD	D
6	235726	BURNER MOUNTING RAIL - PILOT	D
7	024156	FLEXTUBE T6 x 12	A
8	236225	FLEXTUBE Ø4.0mm x 630mm	A
9	227403	GAS VALVE 21S CW 3-8 ELBOW	A
10	227378	KNOB BSEAL 8mm GAS PF	B
11	236224	FLEXTUBE Ø4.0mm x 260mm	A
12	229424	PILOT NUT Ø4mm	D
13	229425	PILOT OLIVE Ø4mm	D
14	236067	PILOT MODULE THERMOCOUPLE NUT	D
15	235711	THERMOCOUPLE 200mm M9	A
16	017802	INLET SPIGOT 10mm	A
17	017804	NUT - 10mm STEEL	D
18	017803	OLIVE 10mm BRASS	D
19	227559	OLIVE 3/8"	D
20	227560	NUT 3/8"	D
21	236223	FLEXTUBE T6 x 30	A
22	235679	BURNER VENTURI	D
23	227375	INJECTOR CONNECTOR ASSY 3-8 x M14	D
24	236213	PILOT TUBE WA	D
25	236215	OPEN BURNER PILOT INJECTOR BASE CLAMP	D
26	045411	WASHER M5 SPRING SS	D
27	748014	SCREW M5 x 12 SKT HD CAP ST/ST	D
28	229880	PILOT ASSY NAT	D
29	PART OF 28	PILOT BODY SPRING	D
30	026136	PILOT INJECTOR SPUD Ø0.20mm (LPG)	A
	026134	PILOT INJECTOR SPUD Ø0.30mm (NAT)	A
	232309	PILOT INJECTOR SPUD Ø0.60mm (TOWN GAS)	A
31	PART OF 28	PILOT BODY NUT	D
32	235710	THERMOCOUPLE 600mm M9	A
33	235712	OPEN BURNER VENTURI GASKET	D
34	045024	WASHER M5 SS	D
35	041421	SCREW M5 x12 HEX HD SS	D
36	030245	INJECTOR 2.45mm (NAT GAS)	A
--	030230	INJECTOR 2.30mm (UK NAT GAS)	A
--	030150	INJECTOR 1.50mm (LPG)	A
--	030140	INJECTOR 1.40mm (UK PROPANE)	A
--	030140	INJECTOR 1.40mm (BUTANE)	A
--	030450	INJECTOR 4.50mm (TOWN GAS)	A
	236238	OPEN BURNER 300mm MODULE (PF) KIT (Does not include Knobs or Pot Stands).	
	236240	OPEN BURNER 300mm MODULE (PF) KIT - UK Only (Does not include Knobs or Pot Stands).	

Recommended Parts Level	
*RPL	Number of Units In-Service
A	1-5
B	5-10
C	10-50
D	50+

8 Exploded Parts Diagrams

8.1.6 G51 Griddle Burner

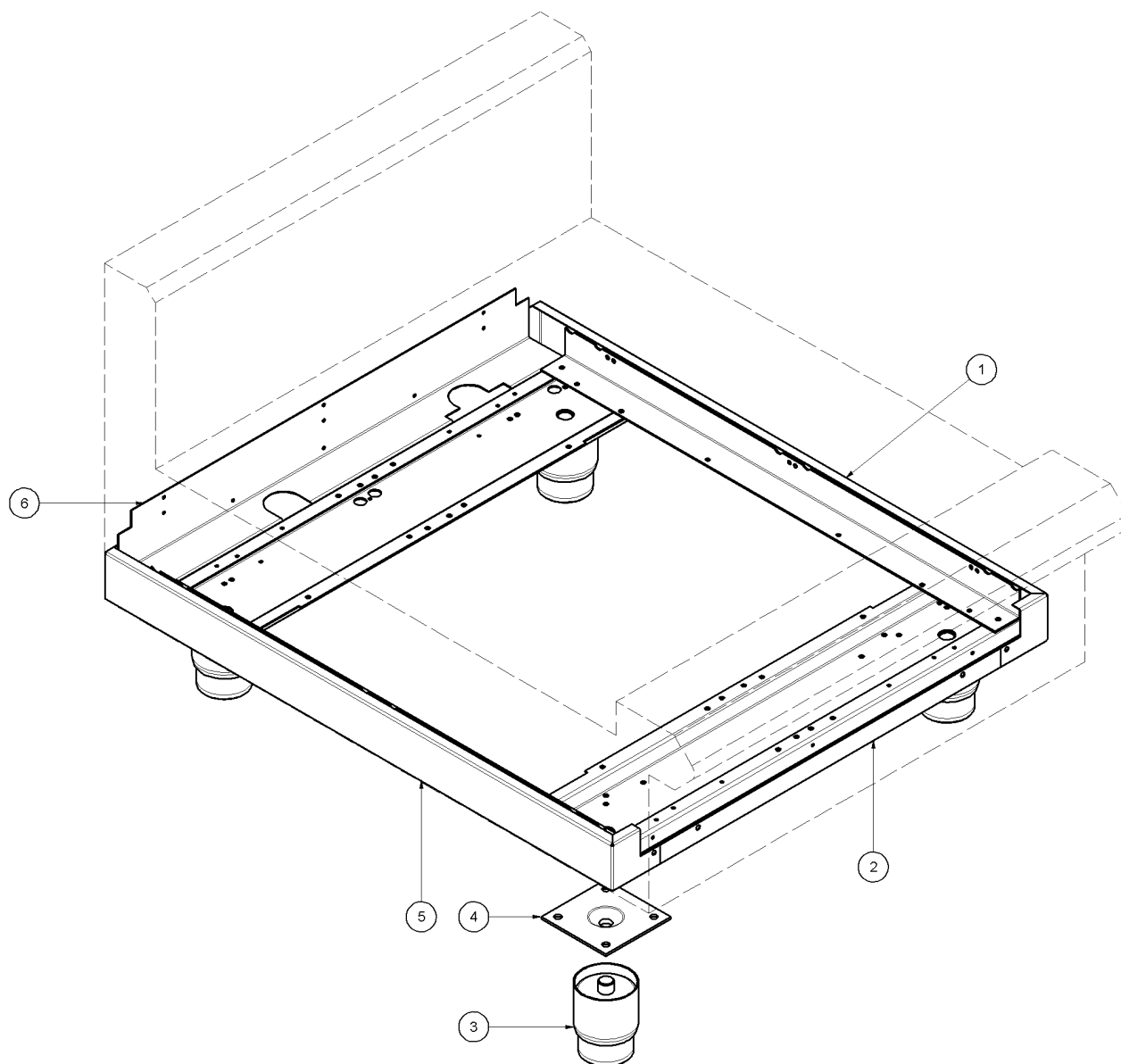


ITEM	PART NO	DESCRIPTION	*RPL
16	017802	INLET SPIGOT 10MM	D
17	017804	NUT - 10mm STEEL	D
18	017803	OLIVE 10mm BRASS	D
19	227560	NUT - 3/8" STEEL	D
20	227559	OLIVE 3/8" BRASS	D
33	227403	GAS VALVE 21S CW 3-8 ELBOW	A
	018790	VALVE MAGNET	C
34	227378	KNOB BSEAL 8mm GAS PF	B
48	230213	GRIDDLE REFLECTOR ASSY	D
49	014105	GRIDDLE BURNER	C
50	032210	INJECTOR 2.10mm (NAT GAS)	A
50	032130	INJECTOR 1.30mm (LPG / PROPANE)	A
50	032120	INJECTOR 1.20mm (BUTANE)	A
50	032340	INJECTOR 3.40mm (TOWN GAS)	A
51	228047	HT LEAD 250mm	A
52	228223	PIEZO CLAMP	D
53	228010	PIEZO HOUSING	D
54	227508	PIEZO - SIT	A
55	011148	BRASS PLUG 3152 x 4	D
56	227594	PILOT SUPPLY TUBE	D
	017805	PILOT NUT 1/4" (VALVE END).	
	017806	PILOT OLIVE 1/4" (VALVE END).	
57	022686	FLEXTUBE DORMONT T6	D
58	019428	THERMOCOUPLE 320mm M9 x 1	A
59	227178	BURNER SUPPORT	D
60	227765	BURNER MOUNTING BRACKET	D
61	019215K	PILOT BURNER KIT	A
	026488	PILOT BURNER INJECTOR 0.35mm (NAT GAS)	A
	019217	PILOT BURNER INJECTOR 0.23mm (LPG / PROPANE / BUTANE)	A
	018067	PILOT BURNER INJECTOR 0.60mm(TOWN GAS)	A
	018744	PIEZO IGNITION ELECTRODE	A
	228713	GRIDDLE MODULE KIT	D

Recommended Parts Level	
*RPL	Number of Units In-Service
A	1-5
B	5-10
C	10-50
D	50+

8.2 G51 Base Options

8.2.1 Bench Mount Base

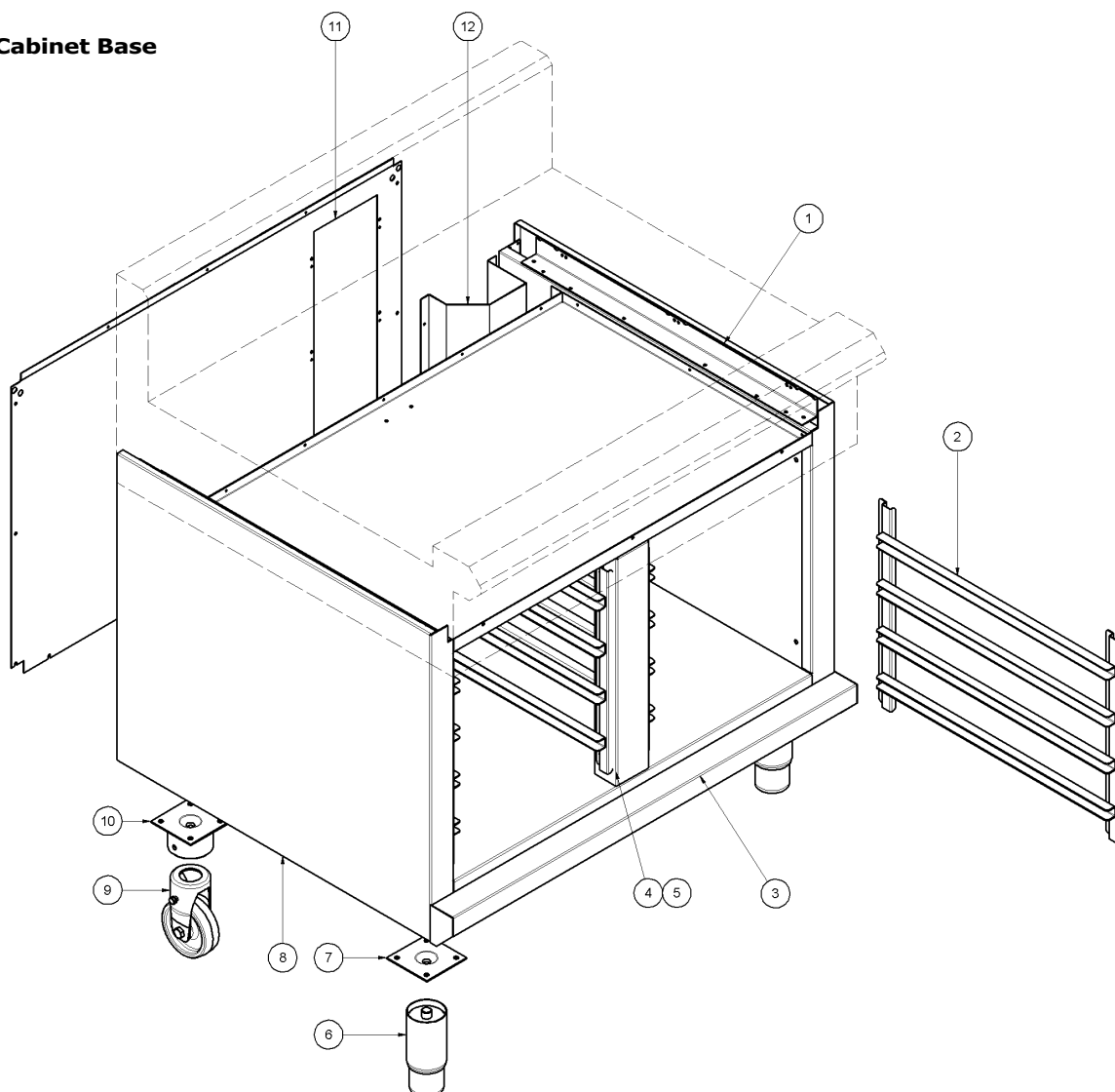


ITEM	PART NO	DESCRIPTION	*RPL
1	230354	SIDE COVER RH	D
2	228663	TOP TRIM 300mm WIDE	D
	227123	TOP TRIM 600mm WIDE	D
	227120	TOP TRIM 900mm WIDE	D
	227125	TOP TRIM 1200mm WIDE	D
3	227855	LEG 80mm x Ø63.5	D
4	227852	LEG PLATE	D
5	230355	SIDE COVER LH	D
6	228670	HOB BACK PANEL 300mm WIDE	D
	228313	HOB BACK PANEL SUPPORT 600mm WIDE	D
	227121	HOB BACK PANEL SUPPORT 900mm WIDE	D
	228314	HOB BACK PANEL SUPPORT 1200mm WIDE	D

Recommended Parts Level	
*RPL	Number of Units In-Service
A	1-5
B	5-10
C	10-50
D	50+

8 Exploded Parts Diagrams

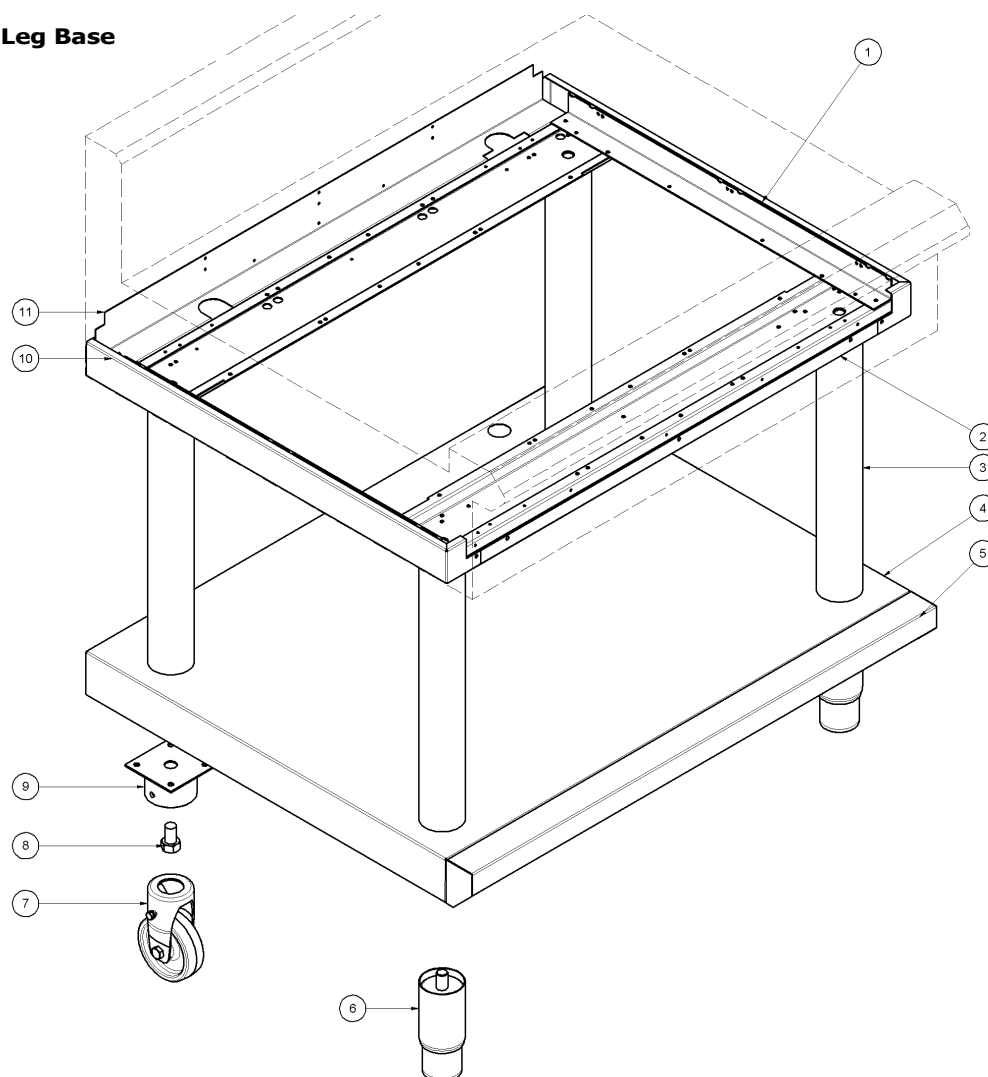
8.2.2 Cabinet Base



ITEM	PART NO	DESCRIPTION	*RPL
1	227048	SIDE PANEL RH	D
2	228321	SIDE RACK WA	D
3	227075	SILL 600mm WA	D
	227901	SILL 900mm WA	D
	227409	SILL 1200mm WA	D
4	227790	FILLER 600mm	D
	227789	FILLER 900mm	D
	227791	FILLER 1200mm	D
5	227788	SIDE SUPPORT 600mm	D
	227787	CENTRE SUPPORT 900mm	D
	227786	CENTER SUPPORT 1200mm	D
6	227850	LEG 150mm x Ø63.5	D
	227852	LEG PLATE	D
8	227049	SIDE PANEL LH	D
9	229674	REAR ROLLER ASSEMBLY	D
10	229671	LEG RING PLATE THREADED	D
11	227040	BACK PANEL 600mm WIDE	D
	227104	BACK PANEL 900mm WIDE	D
	227117	BACK PANEL 1200mm WIDE	D
12	228935	GAS HOUSING	D
13	235489	CABINET BASE KIT 600mm	D
	235490	CABINET BASE KIT 900mm	D
	235491	CABINET BASE KIT 1200mm	D

Recommended Parts Level	
*RPL	Number of units in service
A	1-5
B	5-10
C	10-50
D	50+

8.2.3 Leg Base



231450	BENCH TO LEG STAND KIT 600mm
231451	BENCH TO LEG STAND KIT 900mm
231452	BENCH TO LEG STAND KIT 1200mm
235341	CAB/FRIG BASE TO LEG STAND KIT 600mm
235342	CAB/FRIG BASE TO LEG STAND KIT 900mm
235343	CAB/FRIG BASE TO LEG STAND KIT 1200mm

ITEM	PART NO	DESCRIPTION	*RPL
1	230354	SIDE COVER RH	D
2	227123	TOP TRIM 600mm	D
	227120	TOP TRIM 900mm	D
	227125	TOP TRIM 1200mm	D
3	227853	LEG EXTENSION 530 x Ø63.5	D
4	227408	BASE TRAY 600mm	D
	227407	BASE TRAY 900mm	D
	227409	BASE TRAY 1200mm	D
5	227075	SILL 600mm WA	D
	227901	SILL 900mm WA	D
	227902	SILL 1200mm WA	D
6	227851	LEG 150mm x Ø63.5 EXTD THREAD	D
7	229674	REAR ROLLER ASSEMBLY	D
8	748010	SCREW 5/8" x 1 HEX SET ZP	D
9	229673	LEG RING PLATE PLAIN	D
10	230355	SIDE COVER LH	D
11	228313	HOB BACK PANEL SUPPORT 600mm	D
	228312	HOB BACK PANEL SUPPORT 900mm	D
	228314	HOB BACK PANEL SUPPORT 1200mm	D

Recommended Parts Level	
*RPL	Number of units in service
A	1-5
B	5-10
C	10-50
D	50+